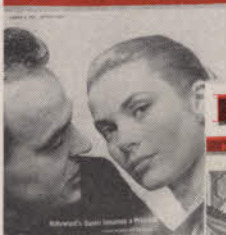


**Here are  
12,000,000 customers,  
actual and potential  
... for YOU**

That's a lot of customers! — but it's a true figure. It represents the total of readers of the above magazines in which Acushnet advertisements will appear between April and September. \* It's the most powerful sales-producing campaign we have ever run, and with last year's record sales as a base, it should send golfers into your shop looking for Titleists as never before. \* Make the most of it — display, recommend, push Titleists and other Acushnet Golf Balls which are sold through your Golf Course Pro Shop *only*. Acushnet Process Sales Co., New Bedford, Mass.



# Swinging around Golf

NEWS OF THE GOLF WORLD IN BRIEF

George Willard, pro at Royal Calcutta GC, in United States visiting clubs and club factories, on his way back to England for periodical leave . . . Harry Adams, MacGregor Chicago salesman, scored decidedly well at Fox River Valley Exchange Club with talk and demonstration on club design and use . . . Salem (Mo.) G&CC planning to build new 18 hole course . . . Central Arizona GA campaigning for new public course at Phoenix Papago Park to ease situation at Encanto GC, only public course in Phoenix.



HERB GRAFFIS

Gen. Abelardo Rodriguez, former president of Mexico; Gov. Braulio Maldonado of Baja, California and Wm. O'Dwyer, former New York City mayor and ambassador to Mexico, in syndicate planning to build \$250,000 country club at Mexicali, near Mexico-California border . . . Several Los Angeles councilmen advocate closing overcrowded Los Angeles muni courses to out-of-city players, or charging the non-residents higher fees.

Construction of swimming pools continues at high rate at country clubs . . . Every flag on University of Mexico's 18-hole course and 9-hole par-3 course stolen one night . . . Indications point to mouse-brained kiddies who need palmistry on their fannies.

Better be some understanding reached quickly and publicly announced between PGA and Mrs. Louis Lengfeld, pres., United Voluntary Services, on National Golf

Day and Swing Club Week . . . Nels Cullenward, golf writer of San Francisco Call Bulletin, wrote of Mrs. Lengfeld at promotional meeting in San Francisco presenting "the plans for the tourney which will take the place of Life's National Golf Day of the past few years." . . . National Golf Day was co-sponsored by Life and

the PGA for three years and as announced in Dec., 1955, will be sponsored by the PGA this year . . . PGA has Golf Day promotion material in hands of clubs and pros and has very strong promotion cooperation of U.S. Jr. Chamber of Commerce. Swing Clubs are exceedingly valuable organizations of women golfers aiding service men in hospitals and other military installations . . . PGA has been very cooperative with Swing Clubs.

Some confusion involved United Voluntary Services and American Womens Voluntary Services when allotment of proceeds from 1955 National Golf Day were made but both organizations received funds for their veterans' programs.

Very foggy to the PGA, amateur golf and other civilian organizations is the picture of the government's policy and procedure in providing and maintaining golf facilities and equipment at vet hospitals . . . Golf has been valuable therapy at some hospitals . . . Golf in treatment of mental cases at a veterans' hospital having a course provided by Chicago District Golf Charities has been especially successful. At some

Front

Cover

60-year old Bill Davis of Lake Forest, Ill., a freshman at Arizona State College, Tempe, Ariz., and a member of the golf team, lines up a putt as his coach, Al Onofrio (rear), and two teammates look on. Davis, retired Chicago businessman, was attending Fordham University when his education was interrupted by World War I and nearly 40 years went by before he could get back to the books. However, his golf education apparently wasn't neglected during this time. He shoots in the 70s.

## POACEAE or FESTUCOIDEAE

You don't need to know the scientific names as long as you have a good source for Bluegrasses and Fescues when you need them. Depend on Mock for—

**QUALITY** — We handle only the finest of carefully tested and double cleaned seed.

**VARIETY** — We can supply all the best-known strains of turfgrass, either pure or mixed to your own formula.

**DELIVERY** — Large stocks and immediate attention to orders assures you seed *where* you want it, *when* you want it.

**MOCK SEED COMPANY**  
PITTSBURGH 30, PA.

veterans' hospitals pros report the golf facilities presented to the hospitals have been neglected until they're no longer useful.

Golf Day, which has brought in about a half million dollars for USO, Red Cross, armed services and veteran's recreation, caddie scholarships, golf turf research, junior golf extension, amputee and blind golfers, PGA relief, benevolent and educational fund, now represents the biggest single responsibility the PGA has assumed in nation-wide service and publicity . . . The PGA and its members have got to put Golf Day, June 9, across as a pronounced success or risk a flop that may be costly in prestige and cash.

What makes the Golf Day assignment one calling for every resource of personnel and publicity and persistence the PGA can command is the fact that use of golf as a fund solicitation factor is steadily increasing . . . Among causes soliciting funds by golf events are heart, cancer, cerebral palsy and crippled children hospitals, Olympic fund, boys clubs, flood relief and Red Cross . . . All of them deserve plenty from those lucky enough to be playing golf but when the golf charity deals get too

# FOR PEAK PERFORMANCE

Peerless® 600  
Mower Sharpener

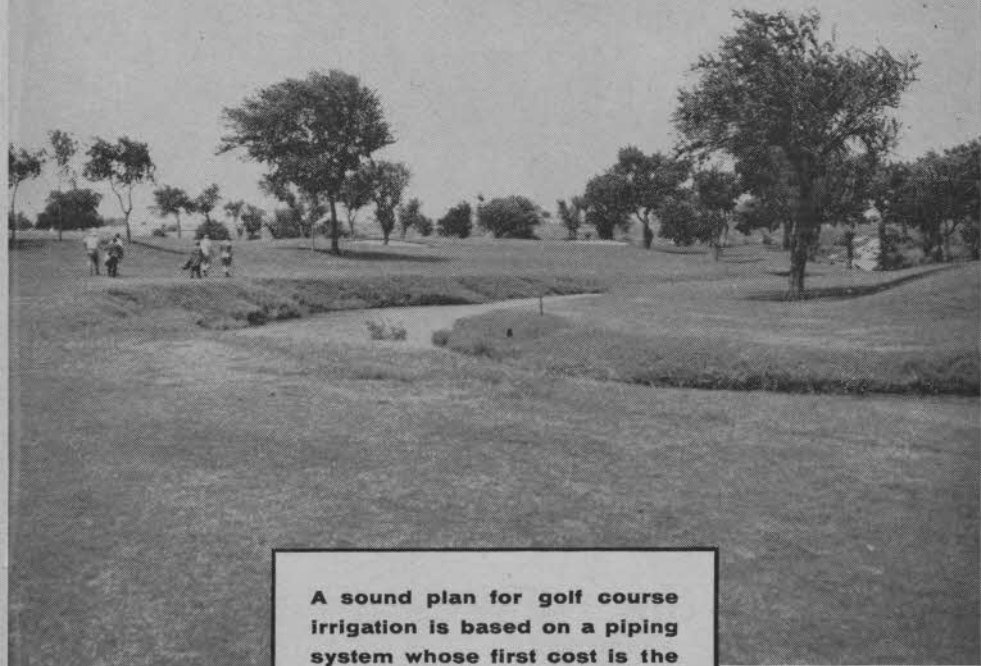


The most accurate sharpener ever built! Best for precision grinding of any reel type mower, from the smallest edger to the largest power or fairway mower. No disassembling of mower necessary. Engine, handle, wheels remain in place on the mower during grinding. Equipped with attachment bar for grinding both the face and edge on bed knives. Offered with gravity feed or hand crank for accurate grinding. Adjusts instantly for hook or straight line grinding. Reconditioner provided for lapping-in operations. It's the fast, easy way to keep your mowers sharp. Write for further information.

Write for our lawnmower repair parts catalog.

**THE FATE-ROOT-HEATH COMPANY, Dept. G-5 Plymouth, Ohio**

## Another fine course piped with Cast Iron



View of  
approach to  
fifth green.

A sound plan for golf course irrigation is based on a piping system whose first cost is the last cost. Install cast iron pipe and there will be no replacements and little maintenance expense. Cast iron pipe lasts for a century. It is the standard material for underground mains. Sizes from 2 inches. Address inquiries to Cast Iron Pipe Research Association, Thomas F. Wolfe, Managing Director, Peoples Gas Building, Chicago, Illinois.

Courtesy Dallas  
A. C. Country Club,  
Dallas, Tex.

# CAST IRON PIPE

*The Standard Material*  *for Underground Mains*

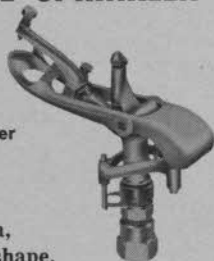


**BUCKNER**  
**ROCKER-JET**  
**PART-CIRCLE SPRINKLER**

The most

*Versatile*

Sprinkler ever  
built!



Easily set to  
water any area,  
regardless of shape.

Serves as a full circle, part-circle, and fixed position sprinkler. Can be used with Coupler and BUCKNER Quick-Coupling Valves, installed on permanent risers, or mounted on roller or sled stands for use with hose.

Consult your authorized  
BUCKNER distributor.



**BUCKNER MANUFACTURING CO., Inc.**  
 1615 Blackstone Ave., P. O. Box 232, Fresno, Calif.

frequent none of them click.

Big remodeling job at Sequoyah GC, Oakland, Calif., with members contributing greater part of cost in equipment and labor . . . Sutherland (Neb.) Reservoir Park, Inc., building 9-hole sand green course . . . Eugene Heitman now mgr., Belle Plaine (Ia.) CC . . . Architect Jack Daray says Coronado, Calif., Glorietta Bay munny 18 will be in play by July, 1957.

Hickory Hills CC, Springfield, Mo., opens new \$360,000 clubhouse replacing clubhouse destroyed by fire in Nov., 1954 . . . Philadelphia CC soon to start building its \$1,250,000 clubhouse . . . Pros at Minnesota PGA spring meeting at Town and Country Club, St. Paul, toured beautiful new clubhouse to be formally opened in May . . . Pro Jock Hendry getting beautiful new shop in a new building but the pro shop building is not well located for convenience to members.

Jim Murray, formerly asst. to Armand Farina at Schenectady (N. Y.) munny course, now pro at Amsterdam (N. Y.) munny course . . . Cloverleaf GC, Greensburg, Pa., opens first 9 . . . second 9 to be opened late this month . . . Larry J. Goodman, one of three owners of Cloverleaf, will manage the club.



**the NEW**  
**"NY"**  
**ROYERS**  
**ELIMINATE**  
**hand shoveling**

Where large quantities of top dressing are required, the new Royer "NY" series Compost Mixers will eliminate all hand shoveling. Model NCYP-E illustrated is an electric powered unit capable of preparing up to 150 cu. yds. per hour. Model of like capacity, gasoline engine driven, is also available.

With its 60" wide receiving hopper and 3' wide combing belt, this machine can handle the contents of a



12 cu. ft. bucket as fast as the loader can deliver.

Whatever your needs may be, from 1 to 150 cu. yds. per hr., there is a Royer to do the job. Write for details.

**ROYER foundry & machine co.** **ROYER**

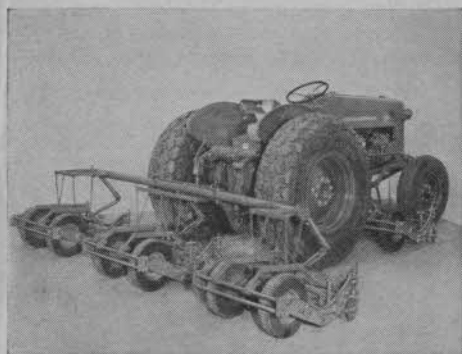
171 PRINGLE ST., KINGSTON, PA.



## NEW International® 300 Utility tractor

... Now with

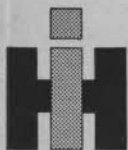
# POWER STEERING



Five-gang reel mower—easily, quickly mounted on the International 300 Utility. Gangs instantly lifted by Hydra-Touch for transport, crossing roadways. Pull 2 pins to convert to 3 gangs.

**Steer single-handed**, no kickbacks to the wheel . . . your operators will step up efficiency and daily mowing capacity with integral power steering on the new International 300 Utility. Get the *feel of the wheel*, see why the International 300 Utility is unequalled for all golf course maintenance work!

**Your IH Dealer will demonstrate!** Look in the classified directory, phone for a date. For free specification folder, write International Harvester Company, Dept. G-5, P. O. Box 7333, Chicago 80, Illinois.



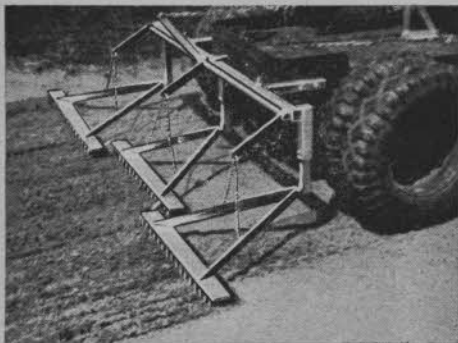
SEE YOUR

## INTERNATIONAL HARVESTER DEALER

International Harvester products pay for themselves in use—McCormick Farm Equipment and Farmall Tractors . . . Motor Trucks . . . Crawler and Utility Tractors and Power Units—General Office, Chicago 1, Illinois.

# Save Labor

## WITH A TRACTOR SAND TRAP RAKE



This three-section trap rake will eliminate most of the hard work in sand traps. It consists of 3 - 36" sections raking a swath 8½ ft. wide. Fits on Toro or Worthington Tractors and can be raised or lowered by operator from tractor seat.

If you are short handed on labor here is a labor saving device that will pay for itself quickly.

PRICE

**\$250<sup>00</sup>**

F.O.B.  
Chicago, Ill.

*George A. Davis Inc.*

5440 Northwest Highway, Chicago 30, Ill.

John Yocum now pro at Galen Hall Hotel and CC, Wernersville, Pa. . . . Joe Creavy now pro at Colonia CC, Albany, N. Y. . . . Frank Murray and Russell Roberts of Rockville, Md., 30 year plan accepted for building and operating Hagerstown, Md., public course . . . Jackie Burke and Jim Demaret to be at Notre Dame university in May, as feature of golf education program financed by gift of James Gerity, wealthy alumnus who declares university student who learns to play good golf and bridge has an educational asset that helps him in business.

James G. Harrison to remodel Tygarts Valley CC, Elkins, W. Va., recently purchased by Elkins Lodge No. 1135 BPOE . . . Robert Trent Jones modernizing Elkridge Club course in Baltimore, Md. . . . Charlie Nichols, Palm Beach (Fla.) CC pro in winter, signed as pro by new Hillcrest CC, North Reading, Mass. . . . Wayne Recreation Assn. plans to build 9-hole course near Lyons, N. Y. to plans of Packard and Wadsworth, La Grange, Ill, architects.

Roger McGee to Annapolis (Md.) as pro . . . Ray Heins to Swan Creek CC, Havre

**"BALL BRITE"**

**For All Makes of Golf Ball Washers**

**THE SAFE GOLF BALL CLEANER**

Write for free sample of "Ball-Brite" and copy of 1956 Catalog.

FLAGS  
FLAG POLES  
BALL WASHER  
HOLE CUTTERS  
PUTTING CUPS  
RULE SIGNS  
BAG RACKS  
MARKERS  
ETC.

**STANDARD MANUFACTURING CO.**  
BOX G, CEDAR FALLS, IOWA

# A REPORT ON THE KROMAD\* FORMULA — HOW EACH INGREDIENT HELPS TURF STAY HEALTHY

No. 3 in a series of reports on a new approach to turf disease control with KROMAD—the broad-spectrum fungicide developed by Mallinckrodt.

This article will give you the “inside story” of KROMAD and present many facts about this new broad-spectrum fungicide that have never been published before.

We want to discuss each active ingredient in KROMAD and show how it helps keep your turf healthy. You will then have a better understanding of just how this broad-spectrum fungicide controls more turf diseases than any other fungicide available today. You will also be better informed on how to use KROMAD advantageously.

It is important for you to remember that KROMAD is the result of an extensive research and testing program. A great deal of experimentation was required to determine the ingredients and exact proportions of each that should go into the product.

The action of these individual ingredients and the action of the right combination of them is the secret of KROMAD's effectiveness.

**Cadmium Compound**—Cadmium is extremely effective and economical for control of such turf diseases as dollar spot, copper spot and pink patch. This cadmium compound controls disease and does not damage turf.

**Potassium Chromate**—Tests in 1953 with a Mallinckrodt experimental fungicide revealed that potassium chromate is very successful against leaf spot diseases such as *Curvularia* and *Helminthosporium*. Adding this ingredient to KROMAD makes it effective against these diseases.

**Malachite Green**—Malachite Green is effective against brown patch. In KROMAD, Malachite Green is combined with other elements also effective against brown patch, and the combination provides positive and long-lasting control. Further research indicates that Malachite Green may control pythium too.

**Auramine**—Auramine is one of the ingredients which act against brown patch and *Curvularia*.

**Thiram**—Continued research indicates that Thiram may be absorbed by the leaf blade. In combination with the other ingredients of KROMAD it contributes some degree of protection against a number of fungi that attack turf grass.

**Urea and Ferrous Sulfate (Iron)**—These ingredients in KROMAD are valuable aids to turf culture. By stimulating healthy growth, they make grasses more resistant to disease.

**Renex**—Better, longer lasting protection is assured when a contact fungicide such as KROMAD completely covers the leaf area. Renex, a wetting agent, is used in KROMAD to insure good coverage.

There you have it—eight important ingredients—each one contributing to the protection and health of your greens. That's why KROMAD controls more turf diseases than any other fungicide on the market!

## SMALL DOSAGE—LOW COSTS

**On a preventive schedule:** Two ounces of KROMAD per 1,000 sq. ft. every five to seven days will control the major turf diseases during normal weather. During extended periods of high temperature and high humidity, larger quantities of KROMAD may be used to achieve increased control. It has been applied at four times the recommended rate with no visible damage to fine turf.

**On a curative schedule:** Experience has shown that if a green is badly infested, outstanding control is achieved by applying KROMAD on three successive days. After this series of treatments, the golf course superintendent can determine by observation when the next dose is needed.

Consult your Mallinckrodt turf fungicide distributor. He will be glad to help you plan a KROMAD turf disease prevention program.

Mallinckrodt Chemical Works, St. Louis, New York.

\*Trademark



## FOR FALL DELIVERY

After September 1, 1956

- ▶ ARLINGTON  
C-1 STOLONS
- ▶ CONGRESSIONAL  
C-19 STOLONS
- ▶ COHANSEY  
C-7 STOLONS
- ▶ PENNLU  
STOLONS

**ALBERT LINKOGEL**

30 Years' Experience on  
Turf Maintenance

# LINK'S

*Nursery, Inc.*

ROUTE NO. 3, CONWAY RD.  
CREVE COEUR, MO.

the TOPS in TURF!



de Grace, Md., as pro . . . Southern Hills CC, Tulsa, Okla., wants to get National Open as soon as it can . . . Grand golf course, wonderful bunch of members and officials, fine clubhouse facilities and an all-star operating staff . . . Jack and Victor Rose to operate Lebanon (Conn.) Ranch CC 9-hole course.

Andrew Lund, supt., Waterbury, Conn., East Mountain munny course, and in the city's service for 52 years, kept on job after mandatory retirement age was reached because city couldn't find a replacement . . . Cedric F. Smalldige to open 18-hole course at Lancaster, N. Y., next month . . . Lawrence Robinson, New York World-Telegram & Sun golf writer says "In 30 years more than 70 golf clubs have been lost to the Met area, with only about two dozen new ones having been built.

Miami, Fla., voters will be asked in November to approve a bond issue for building an 18-hole course near the airport . . . John B. "Reds" Lynam, jr., now pro at Shamokin, (Pa.) Valley CC . . . Bayside Golf Course, at Bayside, Queens, N. Y. C., 18-hole fee course sold for price reported to exceed \$3,000,000 . . . Course to be operated thru August, according to an-

## TURF that Speaks for Itself!

### AT KANAWAKI JIMMIE PATTERSON HAS USED MILORGANITE FOR OVER TWO DECADES

Kanawaki is a much used, popular private golf club in Montreal, Canada. The turf on greens, tees, and fairways is excellent always — thanks to the know-how of Jimmie Patterson.

In the early days Patterson was the Professional only. Then he was asked to direct course maintenance in addition. Now he devotes all his time to maintenance. In addition, Patterson is generous enough to lend a helping hand to other clubs in Quebec Province.

Kanawaki started to use Milorganite before 1930. They have been a consistent carload user ever since — for more than two decades.

*If you have a Turf Problem, Consult:*

**THE SEWERAGE COMMISSION, Milwaukee 1, Wis.**



GOLF CLUBS  
USE MORE

# MILORGANITE

THAN ANY  
OTHER FERTILIZER