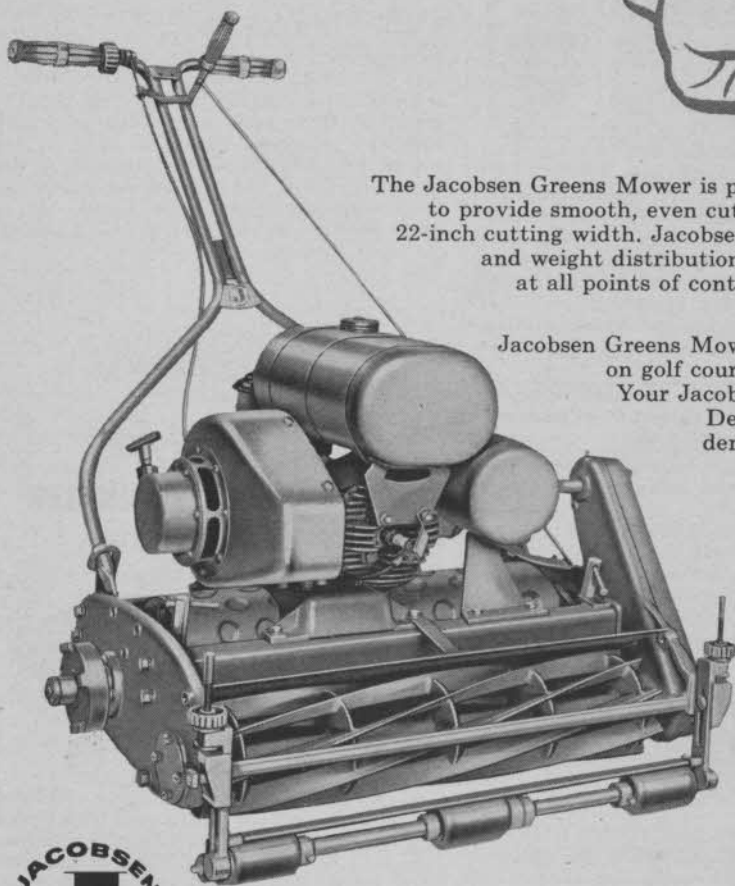


BALANCED DESIGN

makes the difference



The Jacobsen Greens Mower is precision engineered to provide smooth, even cutting across the full 22-inch cutting width. Jacobsen's engine location, and weight distribution equalizes pressure at all points of contact with the turf—eliminates ridges.

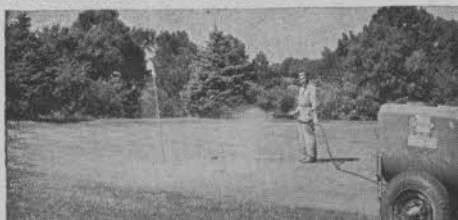
Jacobsen Greens Mowers are first choice on golf courses the world over. Your Jacobsen Greens Mower Dealer will be glad to demonstrate Jacobsen superiority on your greens.



Jacobsen MANUFACTURING COMPANY
Department G-7, Racine, Wisconsin

Subsidiaries: Johnston Lawn Mower Corporation, Brookhaven, Miss., Worthington Mower Company, Stroudsburg, Pa.

SAVE WORK! SAVE TIME! SAVE MONEY!



Simply add a few gallons of
Campbell's Liquid

GRO-GREEN

with Foliage Dietene

to regular spray solutions and
fertilize greens, tees, fairways,
flowers and shrubbery IN
ONE OPERATION!



It's fast, easy, practical. You save labor, time, money! Because GRO-GREEN—with Foliage Dietene added—mixes quickly, thoroughly with all popular chemicals, for simple "one-stop" spraying. Contains the essential elements nitrogen, phosphorous, potassium plus many enriching hormones, vitamins. Apply as often as needed, for richer coloring, harder growth, less brown-spotting, lusher fairways, sturdier root systems that take heavier traffic.

Gro-Green is formulated to your specifications—
10-15-5—15-10-5—15-5-5—32-0-0—or whatever
desired, comes in crystal form also.

- **Greens:** Apply with regular sprayer. 1 gal. Gro-Green to 20 gal. spray solution. Covers approx. 10,000 sq. ft.
- **Fairways:** Regular Sprayer. Use 2 gal. per acre with 8 gal. of water.
- **Tees, Shrubby, Flowers, etc.:** Use regular sprayer. 1 gal. Gro-Green to 100 gal. water or use Automatic Gro-Gun on hose.

Sold on money back guarantee.

Mail coupon for FREE details, name of distributor.

H. D. CAMPBELL CO.
Rochelle 14, Illinois

H. D. CAMPBELL CO.
Rochelle 14, Ill.

Please send me FREE DESCRIPTIVE LITERATURE, and Free Samples about Gro-Green.
 Desired Formula

NAME _____

COURSE OR CLUB _____

ADDRESS _____

CITY _____

STATE _____

goes to Ojai Valley Inn & CC, Ojai, Calif. . . . Deadline for Tam o' Shanter tournament entries is July 27 . . . Big plug for women's pro golf in story in NY World-Telegram & Sun Saturday magazine . . . Story credits John E. McAuliffe, sponsor of the Triangle Round Robin as being strongest booster of women's pro tournament program.

Oahu CC, Honolulu, Hawaii, celebrates 50th birthday . . . Brendenwood GC 9-hole semi-private course at Indianapolis, Ind., reopened by Bill Niehaus . . . Ernie Tucker, pro at Plantation GC, Boise, Id., putting on Southwest Idaho Amateur as booster of golf play in the territory . . . Prizes for the early July tournament include \$2000 in top pro line golf goods. . . . Denver Caudill from Thunderbird, Palm Springs, and Tucson CC, joins Paul Scott's pro staff at Griffith Park, L. A.

Wm. Teacher & Sons to increase PGA Senior prize money from \$6,500 to \$8000 . . . Bob Kenyon, 51, of England beat Pete Burke 4 and 3 at Prenton, Eng., to win World's Senior PGA title . . . Pete went across with trip as a prize financed by Teacher firm.

Art F. Hall, charter member of Heart of American GCS Assn., and owner of Victory Hills GC in Kansas City dist. until he sold out in 1953, died June 21, following a long illness . . . He was one of the finest men in golf business and a great worker in anything for the advancement of the game and the men working in it.

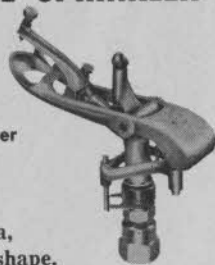


PART-CIRCLE SPRINKLER

The most

Versatile

Sprinkler ever
built!



Easily set to
water any area,
regardless of shape.

Serves as a full circle, part-circle, and fixed position sprinkler. Can be used with Coupler and BUCKNER Quick-Coupling Valves, installed on permanent risers, or mounted on roller or sled stands for use with hose.

Consult your authorized
BUCKNER distributor.



BUCKNER MANUFACTURING CO., Inc.
1615 Blackstone Ave., P. O. Box 232, Fresno, Calif.

SPECIFY HAWS
DRINKING FOUNTAINS
...FOR RUGGED SERVICE

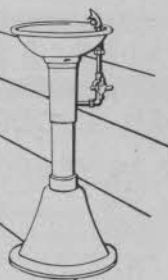
HAWS DRINKING FOUNTAINS contain outstanding features that make them ideal for parks, golf courses, playgrounds, and other outdoor areas—rugged fountains that are durable, sanitary and attractive. They're specifically designed to withstand abuse and constant exposure to weather, and to assure long and trouble-free service.



MODEL No. 12BM2. Attractive, lifetime, cast iron bowl... white enameled inside... and mounted on sturdy 2" galvanized iron pedestal.



HAWS FOUNTAINS ARE SANITARY... with anti-squirt angle-stream fountain heads of chrome-plated brass—raised and shielded to prevent direct mouth contact with orifice. Heads are mounted with vandal-proof flanges to prevent fixtures from being turned. HAWS automatic stream control efficiently regulates water pressure and volume.



HAWS Model No. 12BR2

There's a HAWS FOUNTAIN for every requirement, indoors and out, listed in the new HAWS catalog. Write for your free copy today!

HAWS

DRINKING FAUCET CO.

FOURTH and PAGE STREETS (Since 1909) BERKELEY 10, CALIFORNIA

✧ In addition to the complete line of drinking water facilities, HAWS also features **KRAMER Flush Valves** for any make of plumbing fixture.



INSIST ON
STANDARD
Golf Course
EQUIPMENT

- FLAGS
- FLAG POLES
- BALL WASHER
- HOLE CUTTERS
- PUTTING CUPS
- RULE SIGNS
- BAG RACKS
- MARKERS
- ETC.

If you don't have a copy of our complete "Catalog 56" in your files — write for it today!

STANDARD MANUFACTURING CO.
BOX G, CEDAR FALLS, IOWA

National Golf Foundation, 407 S. Dearborn St., Chicago 5, is distributing "Operating Information for Private Golf and Country Clubs" containing the exceedingly interesting figures compiled by the Chicago District Golf Assn. from its member clubs' data . . . The 1955 Supplement to the Record Book of USGA Championships and International Matches for binding into the USGA green covered record book has been issued by the USGA, 40 E. 38th st., NYC 16 . . . The USGA also recently has issued its Year Book for 1956, containing names and addresses of officers and members, data on championships and international matches, constitution and by-laws.

Jim Thomson, supt., Mohawk GC, Schenectady, N. Y., in "Collaborator" of Northeastern Golf Course Supts. Assn., comments concerning the new flagpole rule, "My opinion is that the flag pole was supposed to be only a marker for the hole, not something to hit at." . . . Women's Western 27th Open at Wakonda CC, Des Moines, Ia., had the Women's Western Golf Assn. and the Ladies' PGA joining forces on June 26, birthday of Babe Zaharias, pro-am preceding the Open, with gate receipts going to Babe's Cancer Fund.

Louis Lengfield, husband of Helen, head of the United Voluntary Services, died recently following a lengthy illness . . . He was prominent in San Francisco business.

Dr. C. W. Schroeder, green chmn, Walnut

TURF that Speaks for Itself!

FORD GOODRICH HONORED AT FLINT COUNTRY CLUB FOR 39 YEARS OF SERVICE

On May 22 the superintendents of eastern Michigan and club officials met jointly in honor of Ford Goodrich, the retiring superintendent at Flint Country Club.

In 1917 Ford was prevailed upon to supervise construction of the new golf course designed by Willie Parks. He stayed on and has been superintendent ever since—for 39 years. Mr. Swanson, his successor, has inherited a well groomed golf course.

Ford Goodrich has used Milorganite ever since production started. At first on greens and tees. More recently fairways have been Milorganized also. The improvement in turf has been marked.

*If you have a turf problem. consult:
Turf Service Bureau*



THE SEWERAGE COMMISSION, Milwaukee 1, Wis.

GOLF CLUBS USE MORE **MILORGANITE** THAN ANY OTHER FERTILIZER

di-met selectively

KILLS CRAB GRASS

on green or fairway
without injury to turf



Southern Courses: DI-MET also destroys Dallisgrass (bull grass), Lemon grass, Sedge in Bermuda Turf.
Southern California: Destroys Dallisgrass (bull grass). Safe on Dichondra.



Word spread like wildfire last year about the remarkable job done by DI-MET on Courses all over the country.

So selectively does DI-MET work that not a blade of the fine Bent grass of your greens suffers discoloration. Safe, quick-acting, DI-MET kills by leaf and root absorption. Rarely requires more than 2 applications even on 4 to 6 leaf plants. On greens, application should be made as soon as plants emerge. Recommended for use on Merion Blue, Kentucky Blue, Red Top, Fescue, Colonial Bent, Creeping Bent, Bermuda.

Available in concentrated liquid form. Apply with hand or power sprayer or hose syphonng device. Packed in cans —no breakage.

We're producing DI-MET as fast as we can, but the demand is tremendous. Please get your order in early. We'd hate to disappoint you. Call your wholesaler today, or write manufacturer for detailed information.



Get rid of MOLES
with **MO-GO**
"Only complete control!"
... Journal of
Wildlife Management

O. E. LINCK COMPANY, Inc.
CLIFTON, NEW JERSEY

manufacturers of TAT ANT TRAP and MO-GO

Sales Representatives: John H. Graham & Co., Inc.



BENT GRASS

*A Reliable Source
of Supply Since 1920*

Our stolons are true to name, weed and seed head free and in vigorous growing condition. As a proof that we know how to keep our strains pure, our present Washington exactly matches that we sold in the 1920's.

- PENNLU
- WASHINGTON
- COHANSEY (C7)
- ARLINGTON (C1)
- CONGRESSIONAL (C19)

HIRAM F. GODWIN & SON

22366 Grand River Ave.

Detroit 19, Mich



**CLEANS
BRIGHTER**

**LASTS
LONGER**

**WITH LESS
MAINTENANCE**



LEWIS Ball Washer

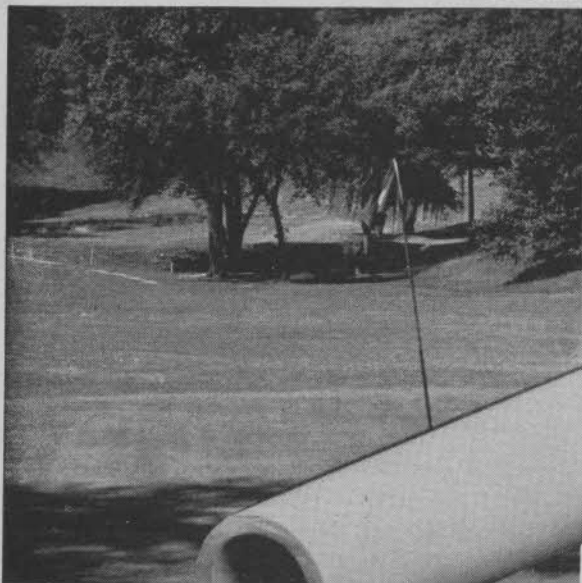
CONTAINER DEVELOPMENT CORP. Watertown, Wis.

Grove CC, Dayton, O., told Miami Valley supts.' assn. "The Green committee should be a continuing committee so a younger member could learn about golf course management to the extent that he could serve as chmn. when necessary." . . . Lloyd Mangrum in Saturday Evening Post article said he made \$16,000 in prize money, exhibitions, endorsements and bonus from manufacturer for winning Open . . . George S. May points out that his World's championship winner does much better financially with \$50,000 for the championship and 55 exhibitions at \$1000 each plus expenses . . . Federal tax on that should be around \$70,000.

Mt. Airy, N.C., group headed by Bob Allran planning to build course . . . Starmount Forest CC clubhouse at Greensboro, N.C., destroyed by \$300,000 fire . . . Some pro shop stock and members' clubs saved by pro, Charley Farlow, and his helpers but considerable loss of playing equipment was suffered . . . Plan rebuilding soon.

After miserable spring weather had badly restricted golf play, improvement from middle of May and in June got pro shop business back to about normal total for first half of year . . . Most pros seem to have had club business ahead of 1955 but ball sales have suffered . . . Demaret brother act is going very well on Chicago TV program . . . Jimmy's golf instruction picture on film and live instruction and comment by Al, pro at Edgewater, make

● NOW is the time to REPLACE WORN HOSE with



- DURABLE
- LIGHTweight

Cobon

**WHITE
PLASTIC**

100% VIRGIN VINYL

Cobon

Reg. U. S.
Pat. Off.

WATER HOSE

- Glass smooth, inside and out to assure full flow of water or fertilizer solution
- 30% lighter; low drag resistance minimizes greens damage
- Non-aging; won't crack, peel, rot
- Gleaming white; high twilight visibility
- Heavy duty precision machined brass couplings attached with stainless steel bands. GUARANTEED to stay on!
- Lasts longer; tough vinyl resists abrasion; 10 times rubber's life
- Permanently imprinted with club's name. Contact your Golf Supply House

Available in $\frac{3}{4}$ " and 1" diam.

Cobon

DEALER INQUIRIES INVITED
Manufactured and
Guaranteed by:

HOSE
DIVISION

COBON PLASTICS CORP.

4246 LAFAYETTE ST. NEWARK 2, N. J.

MArket 3-5383

Destroy Crabgrass Selectively with CRAB-E-RAD*

CRAB-E-RAD — the original di sodium methyl arsonate product — is manufactured to close tolerances as a product designed for the control of smooth and hairy crabgrass (*Digitaria ischaemum* and *sanguinalis*). Produced by Vineland Chemical Company, it was carefully tested before marketing and it is continuing to be tested by agricultural experiment stations throughout the nation.

SAFE — EFFECTIVE

When used at the concentrations recommended, CRAB-E-RAD destroys crabgrass selectively without damaging desirable turfgrasses.

Three or four days after spraying with CRAB-E-RAD, crabgrass begins to turn yellow and soon it withers, browns and dies. Growth stops while the kill is effected. Good turfgrass starts to grow in while the kill is effected. Good turfgrass starts to grow in while the plant withers down.

AVAILABLE NOW

Get CRAB-E-RAD from your West Point Products supplier — or write us for complete information.

*Manufactured by Vineland Chemical Company

West Point Products Corporation, West Point Pa.

interesting entertainment . . . Strong interest in golf rules shown in rules queries drawn by Pars, Birdies and Eagles, TV program of the Joe Jemsek and Charley Nash semi-private courses in Chicago dist.

Salem (Mo.) G&CC has new 9-hole sand green course in beautiful location . . . Maury Fitzgerald, Washington Post & Times Herald golf writer says Andrew Sweeney, Prince Georges G&CC supt., was highly praised for condition of the course by pros who played in PGA tournament there . . . Lou Ringe heads group working to get many course built at American Falls, Ida. . . . Girl pros are doing a lot of clinic and exhibition work this summer . . . Pros say it's tremendously helpful promotion in building their women's business and very interesting to men members, too . . . The clinic and exhibition dates cut into Women's PGA tournament schedule but pay off by developing more golf play among women . . . Club pros say the girl pros' appearances definitely have figured in selling better golf merchandise to women.

When pros compare extent and value of promotion work by men and women tournament pros, the men tournament pros come off a very poor second . . . Club pros say the women players are smart businesswomen, cooperative, industrious and unselfish in a sound, foresighted way but the men tournament pros rarely will go out of their ways to help the club pros make golf business better

. . . perhaps the club pros' censure of the tournament stars is a bit too strong but there is a world of room for improvement of the circuit pros' cooperation with the club pros who sell the stuff that brings income to the tourney players.

Kent CC, Grand Rapids, Mich., makes available a field for young boys' baseball and other community recreation, and formally christens it Van Popering Field in honor of its former pro, Ed Van Popering, who was drowned in a hunting accident last winter . . . Big gathering of Hollywood and military celebrities at opening of Joe Kirkwood, Jr. golf center — range, par-3, etc. in Los Angeles.

Mrs. Stewart Hanley, women's golf instructor at University of Michigan since 1927, and winner of many Michigan and Detroit women's titles, visited Britain during Curtis Cup matches . . . The delightful Mrs. Hanley was with a group of women golfers in Britain in 1928 playing in informal competitions that resulted in the Curtis Cup fixture.

Big party marking 50th wedding anniversary of the Joe Markeys and Joe's 47th year as an employee of the Merion GC Philadelphia dist.) . . . Joe is 78 . . . He was a bartender at Merion and for the past 37 years has been its caddymaster . . . At least 25 of Joe's former caddies who now have sons caddying for Joe were at the party . . . Sports Editor Ed Delaney of Philadelphia News wrote column on Joe's career, crediting him with being first

"Putting is a pleasure

. . . all summer long!"

THAT'S WHAT SUPERINTENDENTS from coast-to-coast are telling us. Why are things going so well for these Superintendents? Because they are using the West Point Verti-Cut to create tight, upright growth on grain-free greens. They are maintaining true putting surfaces that have had excess growth removed through light, frequent Verti-cutting.

IF SPIKING IS REQUIRED during the summer months before thorough aerification in the fall, Superintendents know there's no need to buy other equipment when they have the Verti-cut. It adjusts quickly and easily from a Verti-cut to a Verti-spike position so that the self-sharpening blades can slit the turf.

If the Verti-cut is news to you, get in touch with your West Point Products supplier right away. Or write us for descriptive literature.

The West Point

VERTI-CUT *

Overcomes Grain

Prevents Thatch

Eliminates Hand Weeding



West Point Products Corporation West Point, Pa.

"Modern Turfgrass Tools"

*Reg. U.S. Pat. Off.

Sold in U.S. and Canada



You can't miss!

**SEED WITH *Scotts*
THIS FALL** . . . Year after

year, greens and fairways are kept in championship form with *Scotts TURF PRODUCTS* . . . choice of over one fourth of the nation's leading clubs. Use *Scotts* this Fall in your turf program. Write at once for our recommendations.

O M *Scott* & SONS CO.
Marysville, Ohio
also Palo Alto, California

Scotts ARE FAMOUS
FOR CHAMPIONSHIP TURF

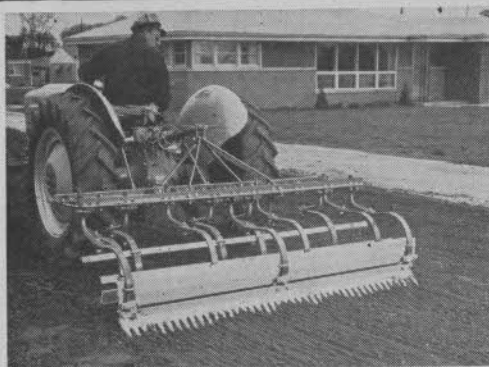
caddiemaster to conduct weekly school for the boys.

Buena Vista CC, Vineland, N. J., 18-hole course designed by Wm. Gordon, Doylestown, N. J. architect, using 200 acres for course and clubhouse and 700 acres for real estate development . . . Course to be in play April, 1957 . . . Will have really complete watering system with rough and cut brush, as well as greens, fairways and tees, watered . . . Ed Carman signed as pro and already teaching at the course site . . . And that's a smart idea in helping to sell home sites to desirable customers who are golf-hungry.

Pelham CC (NY Met dist.) hopes to have its 18 in play this month . . . The historic old course lost 9 holes when New England Thruway was built two years ago . . . Alex Antonio, former National Lefthanded champion, now pro-mgr., Pickaway GC, Circleville, O. . . Fred Davis now pro at James Baird state park course, Poughkeepsie, N. Y.

Bert Purvis, Spalding pro salesman in upper NY state since the Indians turned over the courses to the palefaces, says pros in his territory are making great use of perforated hardboard to improve looks and

Equip now...for fall **TURF REPLACEMENT
RESEEDING • RESODDING • REMODELING
with ROSEMAN TILLER-RAKE
The NEW MULTI-PURPOSE SEEDBED PREPARATION TOOL**



**SCARIFIES, TILLS, PULVERIZES,
SPREADS, LEVELS, FINISH RAKES**

ONE TOOL DOES IT ALL

Do you plan replacing worn or damaged turf areas, rebuilding a tee, or green, or reshaping a trap or bunker this fall. The labor-saving Roseman Tiller Rake will help you get the job done faster, easier, at far less cost and without weather worries.

Now in use by hundreds of landscapers, golf courses, sod nurseries and park departments. Landscapers installing lawns consider it their greatest money maker because of savings in time labor and hauling equipment to and from the job.

Write for descriptive literature today.

ROSEMAN TRACTOR EQUIPMENT CO.

2601 CRAWFORD AVE.
PHONE AM 2-7137
EVANSTON, ILL.