



## HERE'S THE **BEST DEAL** YOU EVER HAD

What a hand to play from! No other golf ball manufacturer in the country can deal you a set-up like this. Listen:

**1.** The Acushnet policy has *not* changed. It still *guarantees* that every ball made by Acushnet shall be sold through Golf Course Pro Shops *only*. On Acushnet balls, you have no competition from "downtown" retailers of any kind.

**2.** Leading amateurs and pros alike are helping to sell your members on Acushnet by playing more Titleists in the big-time tournaments than any other ball. This has been the case for the last seven years in succession.

Acushnet sales in 1955 were the greatest in history. As it is our experience that the man (or woman) who once plays an Acushnet stays with Acushnet, there will be more golf players than ever before looking for Acushnets in the Pro Shops next season.

**3.** Acushnet offers three top-grade balls — all Titleists. Each is designed to give each type of player

the ball best suited for his particular game. This means that whether your member is a super-long hitter, an average good player, or the type of person who occasionally mis-hits a ball, you will have the ball for him which will do the most for his game — and he'll thank you for recommending this most modern of modern balls.

**4.** Acushnet balls are being promoted to the golf players of America by the largest and most powerful consumer advertising campaign we have ever run. From early spring to late fall it will carry the story of Acushnet golf balls to 11,400,000 men and women.

Be sure your stock of Acushnet golf balls is adequate to supply the greatest demand you have ever had for the finest golf balls we have ever made. Acushnet Process Sales Company, New Bedford, Mass.

## **ACUSHNET** *GOLF BALLS*

Sold the world over through  
Golf Course Pro Shops only

# Swinging around Golf

## NEWS OF THE GOLF WORLD IN BRIEF

In driving around the country to golf clubs we've often been reminded the golf club entrances frequently are serious traffic hazards . . . The club road often comes abruptly out on a main highway with heavy high speed traffic, and vision of the main highway as well as of the club road generally is concealed by ornamental gates and high, thick landscaping of the club entrance . . . Supts., pros and managers should call this peril, if it exists at their clubs, to the attention of officials and request permission to correct the condition.

Bert Purvis, Spalding pro salesman in up-state N. Y. now is in his 31st year with the company . . . Jim started in the Spalding store on 5th ave. . . . From Bert's notes . . . Bob Klink, formerly asst. to "Smiling Emmett" Kelley at Green Lakes CC, Fayetteville, N. Y., now pro at Auburn (N. Y.) G&CC . . . Bill Smith, pro at Orchard Park (N. Y.) CC now running his winter school in Statler hotel, Buffalo . . . Fine new pro shops for Walter Bemish at Town & Country Club, Lockport, N. Y., and J. Ray Welsch, East Aurora (N. Y.) CC.

Harry Todd from Lakewood CC, Dallas, to be pro at new Riverdale CC, Dallas, when Riverdale opens about April 1 . . . Jim Dunkerley who's going from pro job at Peachtree, Atlanta, Ga., to succeed Charley Hall who is retiring from Birmingham (Ala.) CC, gets Milton Ward as asst. . . . C. E. (Corky) Dahl, formerly asst. to Wally Mund at Midland Hills CC, to Southview CC, South St. Paul, Minn.

Guadalajara (Mex.) CC whose annual invitation tournament always is a gay golfing fiesta for Mexican amateurs and their



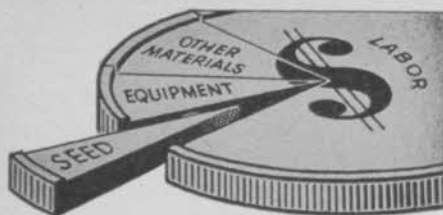
HERB GRAFFIS

guests from the U. S. expects, within a couple of years, to be host to one of the big international tournaments usually held in Mexico City . . . Guadalajara to enlarge clubhouse . . . Its course is one of finest conditioned south of the border . . . The club's gen. mgr. and supt. says help he's received from O. J. Noer and other experts and from supts. he's met at supts.' meetings in the United States has been of great value to the club.

Bill O'Hara signed as pro by Westbrook CC, Mansfield, O. . . . O'Hara was asst. to Felice Torza at St. Charles (Ill.) CC, then during 1955 to Jim Foulis at LaGrange (Ill.) CC . . . Frederick A. Marsh is new pres. Metropolitan (N. Y.) Golf Assn. . . . Marsh, long a valuable member of the Met official family, succeeds Willie Turnesa as head of the 227 member club organization . . . Mrs. Eugene K. Lydon of South Shore CC and Beverly CC (Chicago dist.) re-elected pres., Women's Western Golf Assn. . . . Women's Western has 305 member clubs.

Paul A. Divico, formerly asst. mgr., Findlay (O.) GC, now is Burlington (Ia.) CC mgr. . . . Karl W. Ernst named mgr. of new Osage Hills CC, Tulsa, Okla. . . . U. S. Army to build eight courses in Germany and France at cost of \$420,000 financed mainly by Post Exchange profits and using no U. S. tax funds . . . Courses army personnel have been using are being derequisitioned and returned to owners.

Westchester County, N. Y., to build \$300,000 clubhouse at Dunwoodie course . . . Chapel Hill (N. C.) CC adding 9 holes, addition to clubhouse, and swimming pool . . . L. A. Newnham in charge of course



**The Smallest Slice  
of your course expenses can make  
The BIGGEST difference**

Do your golfers wind up every round praising your turf? If you're not getting your share of compliments, you ought to check that *vital 5%*—the average course budget expenditure for seed. It's mighty important to spend that slice wisely for top quality.

Call upon Mock's for the newest developments in turf grass seed, sold either pure, or mixed to your special formula. Your inquiry will receive immediate attention . . . your needs will have Mock's specialized service.



**MOCK SEED COMPANY**  
PITTSBURGH 30, PA.

construction . . . Charleston (S. C.) Post editorial lauds "energy and ingenuity" of two Negro men, their relatives and friends who've built a 6-hole course with clubhouse, on James Island . . . Course has grass greens watered with a hand pump from a portable drum.

Jim Turnesa moves from Briar Hall CC to be pro at John Handwerg's new 27-hole Empire State CC at Spring Valley, N. Y. . . . Doug Turnesa to be Briar Hall's pro . . . Ellsworth Vines from Tamarisk CC, Palm Springs, Calif., next spring to be pro at Inwood CC (NY Met. dist.) succeeding Art Doering.

National Assn. of Left-Handed Golfers to hold its 1956 championship at Catawba CC, Hickory, N. C., Aug. 8-11 . . . Dr. Charles E. Cloniger of the Catawba club is NALHG pres. . . . Golf business now has two former baseball major league notables, Jack Russell of Scoggins and Eddie Sawyer of Plymouth Golf Ball Co. . . . Russell, once a pitching star, and Sawyer who managed the 1950 National League champion Phillies, were active at the PGA annual meeting.

John H. Nansen now mgr. Twin Orchard CC (Chicago dist.) . . . Henry C. Piper pro-

**TURF** *that Speaks for Itself!*

**MILORGANITE HELPS BUILD BETTER TURF AT THE  
P.G.A. NATIONAL GOLF CLUB**

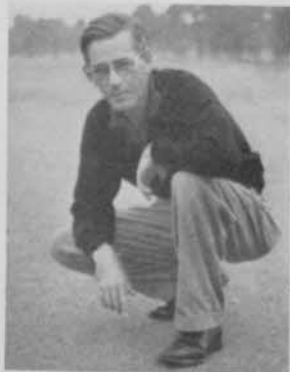
When Leo O'Grady assumed charge of the golf course at the P.G.A. National Golf Club, Dunedin, Florida, the turf on greens, tees, and fairways was poor. That is no longer true. The improvement has been most gratifying to every member of the P.G.A. who uses the course in winter and to other golfers who like the fine lay-out there.

This past winter, and the winter before, there has been nothing but praise for Leo O'Grady and for the course superintendent, Troupe Griffin. Their program for turf improvement includes the use of Milorganite. They like its longer lasting qualities for use on the sandy soil at Dunedin.

*If you have a turf problem, consult:*

**TURF SERVICE BUREAU**

**THE SEWERAGE COMMISSION, Milwaukee 1, Wis.**

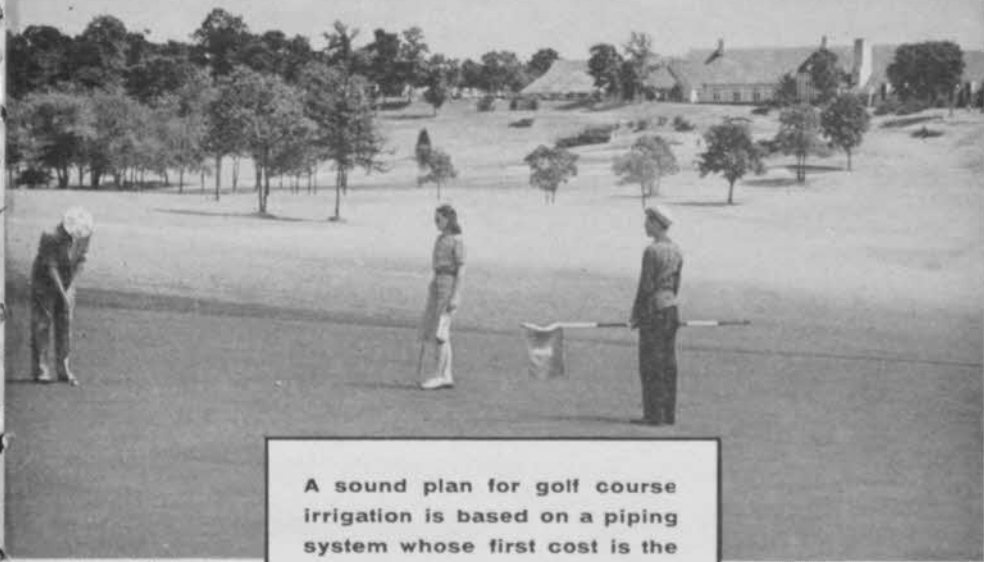


GOLF CLUBS  
USE MORE

**MILORGANITE**

THAN ANY  
OTHER FERTILIZER

## Another fine course piped with Cast Iron



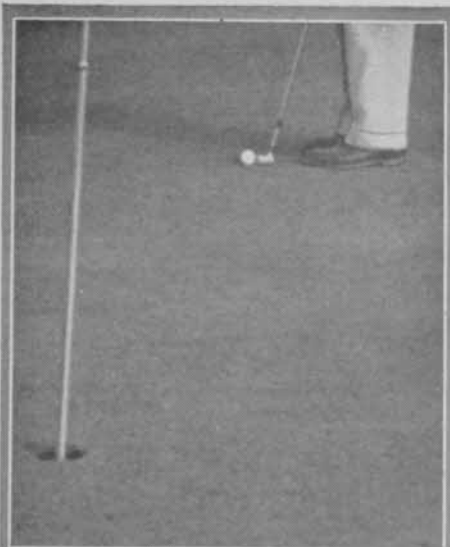
View of first green  
with Clubhouse in  
background.

A sound plan for golf course irrigation is based on a piping system whose first cost is the last cost. Install cast iron pipe and there will be no replacements and little maintenance expense. Cast iron pipe lasts for a century. It is the standard material for underground mains. Sizes from 2 inches. Address inquiries to Cast Iron Pipe Research Association, Thomas F. Wolfe, Managing Director, Peoples Gas Building, Chicago, Illinois.

Photo courtesy of  
Southern Hills Country  
Club, Tulsa, Okla.

# CAST IRON PIPE

*The Standard Material*  <sup>®</sup> *for Underground Mains*



**Vertagreen®**  
Builds **TOUGH**  
Fine-textured **Turf**

Vertagreen is the complete plant food you should use to have outstanding greens, tees and fairways. Vertagreen provides the elements necessary for a deep, vigorous root system . . . that keeps turf green and beautiful through extreme weather conditions.

Good greens "make" a golf course. Keep your greens in perfect playing condition throughout the season with Energized Vertagreen.



**ARMOUR  
FERTILIZER  
WORKS**

moted to mgr. Bonnie Briar CC (NY Met dist.) . . . Court House CC, Fairfax, Va., now in its new clubhouse . . . Charley Arena signs as pro at Buena Vista CC, Vineland, N. J. . . . Club recently was organized and schedules early start on construction of Gordon-designed course.

Art Peterson building 9-hole course at his Stehekin Valley resort near Chelan, Wash. . . . Golfers of Bristol, on border of Virginia and Tennessee, pushing for many course . . . Ralph Marvin gets County Planning commission approval for construction of 18 hole course at Florin, Calif.

"Citizens' Committee for More Golf Courses in San Francisco" organized . . . Al Dermody is chmn. . . . Group includes members of San Francisco's three many courses . . . Lynn H. Beard plans to build 18-hole course at Tulsa, Okla. . . . Gabe Gup heads group planning to build third private country club at Mobile, Ala.

San Francisco golf writers urging that lot of work be done in preparing Harding Park course for 1956 USGA public links championship . . . Bob Goethals in SF Chronicle says that despite heavy play seven days a week at Harding, course needs to get "the works — from top to bottom" . . .

**Cut Sharpening Costs!**

with a **NEW**

**SIMPLEX  
"150"**



- LIGHTER
- MORE COMPACT
- LOWER PRICED

Simplex "150," the newest portable lapping machine, reconditions any hand, power, or gang reel-type mower with lapping compound . . . keeps mowers in top condition between sharpening jobs. Couples to either side of mower; gang mowers need not be unhitched. Weighs only 30 pounds—easily carried right to the job. G-E 1/4 hp motor with reversing switch for quiet, dependable operation.

Write today for **FREE** folder.

**The FATE-ROOT-HEATH Company**

Dept. G-2, Plymouth, Ohio

# BIG in everything but price!



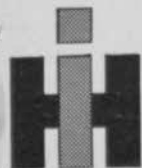
## NEW! INTERNATIONAL<sup>®</sup> CUB Lo-Boy tractor

- MOWS
- HAULS
- LOADS
- PLOWS SNOW
- SAWS WOOD
- SPRAYS
- PUMPS
- SWEEPS
- BULLDOZES
- DIGS POST HOLES
- MIXES CONCRETE
- COMPRESSES AIR

You'll save up to \$1,000 with a new International Cub Lo-Boy... compared with the cost of larger utility tractors that can do no more on many golf course maintenance jobs.

You can haul up to 1½ tons with the McCormick Cub dump trailer, shown above... equip the Cub Lo-Boy with low-cost mounted equipment for any or all the jobs listed at left. For mowing, choose from 3-gang reel, 42-inch rotary, 48-inch hammerknife, or 5-foot cutter-bar types. Equipment is controlled effortlessly with exclusive IH hydraulic Touch-Control.

Your IH Dealer will demonstrate! Look in your classified directory... call today. For free folder, write International Harvester Company, Box 7333, Dept. G-2, Chicago 80, Ill.



SEE YOUR

## INTERNATIONAL HARVESTER DEALER

International Harvester products pay for themselves in use—McCormick Farm Equipment and Farmall Tractors... Motor Trucks... Crawler and Utility Tractors and Power Units—General Office, Chicago 1, Illinois

**"BEST TURF  
IN 30 YEARS—  
with AGRICO and AGRINITE"**



... says George E. Ewing, Supt. of Beaver Valley Country Club, Beaver Falls, Pa.

**READ THE FACTS:**

Mr. Ewing says, "AGRICO year after year gives good root growth, deep color without too lush growth, thus eliminating many disease problems. I find that the use of AGRICO and AGRINITE exclusively, produce turf that golfers appreciate and enjoy. For the past 7 years, I've had better turf than in the previous 23 years when I used other brands. AGRICO is a 'must' on our course."

**ORDER AGRICO NOW** . . . and be sure to try AGRINITE, the 100% Natural Organic Fertilizer. See your regular supplier, or write to The AMERICAN AGRICULTURAL CHEMICAL Co., 50 Church St., New York 7, N. Y.

**AGRICO®**

*America's Premier Golf Course Fertilizers*

**AGRINITE®**

*the Better, Natural 100% Organic Fertilizer*

First 9 at Alameda, Calif., second muny course expected to be in play in June . . . Planning new clubhouse to serve Alameda's Bay Farm Island muny course and the new muny course adjacent.

Canon City, Colo., to have muny course with Jaycees working with municipal authorities on the project . . . Work progressing rapidly on Henie Hills G&CC 18 between Oceanside and Vista, Calif. . . . Course designed by Wm. P. Bell . . . Club is private, adjoining 1600 acre subdivision. . . . Preliminary engineering completed on proposed muny 18 at Burbank, Calif.

Russell Frease to build 18 at Federal Way, Wash. . . . Erie County (Buffalo) N. Y. Board of Supervisors ask legislature to appropriate funds for building 18-hole course in Beaver Island state park . . . Considering building public course in Rotterdam, about 15 minutes from center of Schenectady, N. Y.

Allentown, Pa., municipal golf course paid another \$10,000 out of 1955 operating profit, toward liquidation of debt created for development of the course . . . University of Maryland course now being built financed by \$67,000 from Maryland's share of 1951 Sugar Bowl game and \$100,000



*Turf King*

**SPRINKLERS**

and

**QUICK-COUPLING Valves**

*the Perfect Twosome*

BUCKNER Turf-King Sprinklers provide an ideal curtain of water for efficient irrigation. Quick-Coupling Valves add speed, efficiency, and economy to a watering system.

For low-cost controlled irrigation, consult your authorized BUCKNER distributor. He is qualified to help you.

 **BUCKNER MANUFACTURING CO., Inc.**  
1615 Blackstone Ave., P. O. Box 232, Fresno, Calif.

# Jacobsen GREENS MOWERS

FIRST ON THE GREEN  
THE WORLD OVER!



The Mid-Ocean Country Club, located in picturesque Tucker's Town, Bermuda, is world famous as the site of the Big Three Conference where President Eisenhower, Sir Winston Churchill, and Premier Laniel met in 1953.

Assistant Pro., Ian Crowe, is shown above with one of the Bermuda Club's Jacobsen Greens Mowers which are used to assure the smoothest putting surface possible. At home and abroad, from Bermuda to Bombay, Jacobsen Greens Mowers are first on the green.

JACOBSEN MANUFACTURING COMPANY

DEPARTMENT G-256, RACINE, WISCONSIN



Subsidiaries: Johnston Lawn Mower Corporation, Brookhaven, Mississippi • Worthington Mower Company, Stroudsburg, Pennsylvania



# SAVE WORK! SAVE TIME! SAVE MONEY!



Simply add a few gallons of  
Campbell's Liquid

## GRO-GREEN

with Foliage Dietene

to regular spray solutions and  
fertilize greens, tees, fairways,  
flowers and shrubbery IN  
ONE OPERATION!

It's fast, easy, practical. You save labor, time, money! Because GRO-GREEN—with Foliage Dietene added—mixes quickly, thoroughly with all popular chemicals, for simple "one-stop" spraying. Contains the essential elements nitrogen, phosphorous, potassium plus many enriching hormones, vitamins. Apply as often as needed, for richer coloring, hardier growth, less brown-spotting, lusher fairways, sturdier root systems that take heavier traffic.



1 & 5-gal. Cans  
30 & 55-gal. Drums

Gro-Green is formulated to your specifications—  
10-15-5—15-10-5—15-5-5—32-0-0—or whatever  
desired, comes in crystal form also.

- **Greens:** Apply with regular sprayer. 1 gal. Gro-Green to 20 gal. spray solution. Covers approx. 10,000 sq. ft.
- **Fairways:** Regular Sprayer. Use 2 gal. per acre with 8 gal. of water.
- **Tees, Shrubby, Flowers, etc.:** Use regular sprayer. 1 gal. Gro-Green to 100 gal. water or use Automatic Gro-Gun on hose.

**Sold on money back guarantee.**

Mail coupon for FREE details, name of distributor.

**H. D. CAMPBELL CO.**  
Rochelle 14, Illinois

**H. D. CAMPBELL CO.**  
Rochelle 14, Ill.

Please send me FREE DESCRIPTIVE LITERATURE, and Free Samples about Gro-Green.

Desired Formula

NAME \_\_\_\_\_

COURSE OR CLUB \_\_\_\_\_

ADDRESS \_\_\_\_\_

CITY \_\_\_\_\_

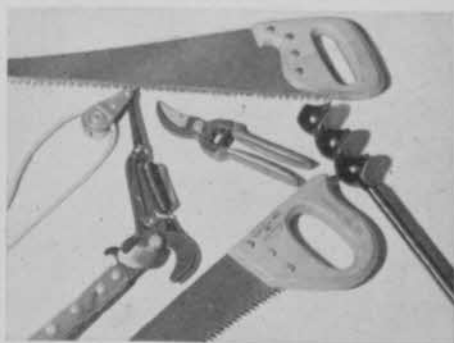
STATE \_\_\_\_\_

from university's athletic receipts.

New Jersey seems to have far more YMCA and YWCA and adult night school golf classes than any other state . . . Mike Amorelli, pro at Copper Hill CC conducting winter golf classes at Flemington (N. J.) high school . . . Philadelphia (Pa.) CC to build \$1,250,000 clubhouse at its Spring Mill course . . . Building program includes Olympic-size swimming pool, four bowling alleys and six tennis courts.

Twin Oaks GC, 9 holes, semi-private, being constructed by J. T. Cook at Duncan, Okla. . . . Gene Bowman to add second 9 to his Mount Hood GC, Portland, Ore. . . . Winchester (Va.) CC to spend \$100,000 for additional 9 holes and new clubhouse . . . Paul Koenig heads group to build 6-hole Willow Creek CC course at Heppner, Wash.

Expect to have first 9 of 18 of Glendale GC, Allentown, Pa., opened by Sept. . . . A 9-hole short course is being built at Greensboro (N.C.) Women's College . . . Miss Ellen Griffin of the school's physical education dept. says the course will be valuable as a teaching aid, recreational opportunity that can be used in limited time available between classes, for con-



## The Finest in Tree Tools

Every tool you need for the care and maintenance of trees and shrubs. Pruning saws, power saws, pole pruners, pruning shears, etc.

Write for our Complete Catalog

**George A. Davis Inc.**

5440 Northwest Highway, Chicago 30, Ill.