



**We'll demonstrate  
Worthington equipment,  
any time, anywhere, for anyone!**

**N**OW, FOR THE FIRST TIME, you can have a "full-dress parade" and demonstration of the *right* equipment for your mowing problem. Backed by more than 30 years of experience, Worthington (*and their entire dealer organization*) is ready and willing to prove to you "how" and "why" Worthington mows more, mows better and mows *more efficiently!* Before you consider any new equipment, consider this offer - "Worthington would like to have you try *before you buy*"—then, and only then—will you know why Worthington equipment has always been preferred when quality performance is important.

*Write for your demonstration, today!*

**WORTHINGTON MOWER COMPANY** STROUDSBURG, PENNSYLVANIA

# Swinging around

## NEWS OF THE GOLF

Hi-Desert G&CC starting construction of 9-hole course at Yucca Valley, Calif. . . . J. W. Yale, Yorba Linda, Calif., contractor, is building the course which has been designed by Bill Bell . . . Club is private and plans expansion to 18 . . . Expects to open July, 1956 . . . Bill and Dave Gordon rebuilding part of first 9 of Lancaster (Pa.) CC . . . Rebuilding will get holes above flood level . . . Hurricane Diane aftermath flooded this part of the course and damaged other courses in Central Pa.



HERB G

Lonnie, 14-year-old son of Jack Lindley, pro at Hannibal, (Mo.) CC, broke his leg in three places in diving accident at club's pool . . . The boy is recovering after being repaired at St. Elizabeth's hospital . . . Club members helped his recovery with loads of gifts and cards . . . Jack Burnett, veteran and very good sports wireless producer-director-writer-announcer with successful background in Kansas City, St. Louis, Chicago and New York has been made sports director for Mutual Broadcasting System.

Swan Creek CC, near Oakington, Md., officially opened . . . Built by Frank Murray . . . "Dutch" Fahrenwald is pro . . . Highly interesting and pictorial series on Washington, D. C. golf clubs has been running in Washington, (D.C.) News . . . Ross Bennett wrote the series . . . Piedmont 9-hole course opened at Greenville, S. C. . . . Construction started on 9 holes and pro shop for Rolling Green CC, Greenville, S. C. . . . Expect to have course in play next spring.

Big attendance at six-week free classes for boys conducted by pro George Hunter at Meridan (Conn.) munny course . . . Betsy Rawls doing swell promotion with her clinics followed by 9-hole exhibition with three women members selected by club pros—or rather by women's committees at pros' clubs . . . Pros too cagey

know is how to get . . . body's got the secret of how to hit the ball straight consistently he can get a lot for that, including, probably, a goodly sum willingly given by Hogan.

Darmouth (Mass.) CC first 9 officially opened . . . Jeff Cornish was architect . . . Course was built by Eduardo J. Medeiros Co., New Bedford, Mass. . . . Bill Ash, from Franklin (Mass.) CC is Dartmouth supt. . . . Harold Godwin, for past 14 years at Plymouth (Mass.) CC is Dartmouth pro . . . Second 9 of course to be completed by Fall next year.

Jersey pros' series on "My Biggest Golf Thrill" in Paterson (N. J.) News and written by Jerry Izenberg has provided much entertainment for golfers in the area . . . Westminster, Mass., to have 9-hole course built by Clarence Gagne, Dr. John Mercer and Albert LeBlanc of Fitchburg . . . Mrs. Ray Fordyce has succeeded her late husband as owner-mgr., Conneaut Lake Park 9-hole public course at Conneaut Park, Pa.

Dr. Frank L. Day, retired college professor, is 87 and plays regularly at Hermitage CC, Richmond, Va., to his 16 handicap.

Russell Park Development Co. constructing first 9 of eventual 18-hole course

at Tracy, Calif. . . . William P. Bell of Pasadena was architect . . . Bell working on plans for two new 18-hole public courses on Torrey Pines Mesa, San Diego, Calif. . . . Construction being pushed on Glendora CC, Arcadia, Calif. . . . Bill Cullen, club's supt., on the building job . . . Now building new clubhouse for Meadowbrook CC, Tulsa, Okla.

Wailua 9-hole course at Lihue, Hawaii being enlarged from 9 to 18 . . . Shawnee CC, Topeka, Ks., spending \$200,000 enlarging and remodelling clubhouse . . . Start building Prospect Hill G&CC, near Glenn Dale, Md., 18-hole course and clubhouse . . . Begin construction of first 9 of Meadowbrook GC, Lafayette, Calif.

Absentees from amateur championships this summer certainly reflected the large number of younger golfers now in military service . . . When Lou Worsham opened his range in the Pittsburgh, Pa. dist. he offered \$500 for a duplicate of his historic winning wedge shot at Tam O' Shanter . . . In the first three days there were three aces . . . Ouch! . . . Fine new 9-hole course and clubhouse for Negro golfers open this fall at Winston-Salem, N. C.

# Cut Sharpening Costs!

with a New **SIMPLEX® "150"**

Simplex "150," the newest portable lapping machine, reconditions any hand, power, or gang reel-type mower with lapping compound . . . keeps mowers in top condition between sharpening jobs. Couples to either side of mower; gang mowers need not be unhitched. Weighs only 30 pounds — easily carried right to the job. G-E 1/4 hp motor with reversing switch for quiet, dependable operation. Besides its money-saving performance, the new Simplex "150" is . . .

• LIGHTER

• MORE COMPACT

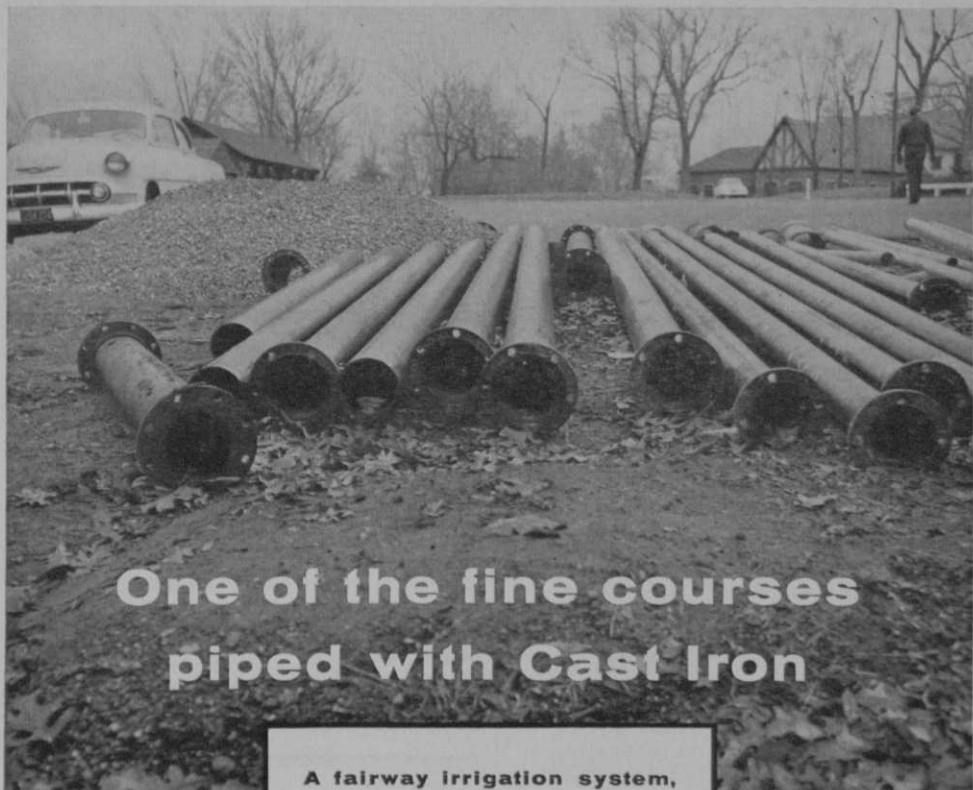
• LOWER PRICED

The **FATE - ROOT - HEATH**  
Company

Dept. G-9, Plymouth, Ohio



Write today for  
**FREE Folder**



## One of the fine courses piped with Cast Iron

Mechanical joint  
cast iron pipe  
being installed for  
Glen Echo Country Club,  
St. Louis, Mo.

A fairway irrigation system, piped with cast iron, is an investment in better playing conditions and a healthy membership—a *permanent* investment without replacement or maintenance expense. The first cost is the last cost. Cast iron pipe serves for a century. It is the standard material for underground mains. Sizes from 2 inches. Address inquiries to The Cast Iron Pipe Research Association, Thos. F. Wolfe, Research Engineer, Peoples Gas Building, Chicago.

Courtesy  
Glen Echo Country Club.

# CAST IRON PIPE

**The Standard Material**  **for Underground Mains**



# "EXCELLENT BENT GROWTH AND COLOR Thanks to Agrico"



One of the beautiful fairways and greens at the Marshfield Country Club, Marshfield, Mass. MELVIN G. O'Kelly, Supt., of that well-known Club, says:

"THANKS to AGRICO, I find that by feeding greens during the hot Summer with the proportioner, I get a very noticeable increase in bent growth, root growth and color from AGRICO.

"By feeding AGRINITE in the late Fall, as recommended, my greens get off to a better start in the Spring and stay in good condition despite Winter play.

"At one time, we used a commercial type fertilizer on our fairways but, after using AGRICO FOR TURF and AGRINITE, we have seen an outstanding difference in color, root growth, and length of feeding."

**USE AGRICO and AGRINITE**—get maximum return for your fertilizer dollar. See your regular supplier, or write to The AMERICAN AGRICULTURAL CHEMICAL Co., 50 Church St., New York 7, N. Y.

## AGRICO®

America's Premier Golf Course Fertilizers

## AGRINITE®

the Better, Natural 100% Organic Plant Food

First 9 of eventual 18 of Shaker Farms course near Westfield, Mass., opened by owners Ray Papanti and Tony Zepko of West Springfield, Mass. . . . Expect to start building Isle of Palms course near Charleston, S. C., in Nov. says J. C. Long, Charleston lawyer and contractor . . . Ed Riccoboni making survey of golf turf requirements of the course.

Some more merry history of American golf ended when Jock Campbell, 77, died recently at Philadelphia after a long illness . . . Jock retired as Old York Road pro in 1946 after a heart attack and was succeeded by Wallie Paul but he continued to come to the club, where he'd been made an honorary member, six days a week . . . An oil portrait of Jock is in the club's men's grill . . . With Jock gone only one of the seven Campbell brothers from Troon survives . . . All of them came to the U. S. and figured prominently and cheerfully in the building of American golf . . . Alex (Nipper) Campbell became almost a legendary character in the bright annals of the early days but all the other brothers also were scintillating pioneers.

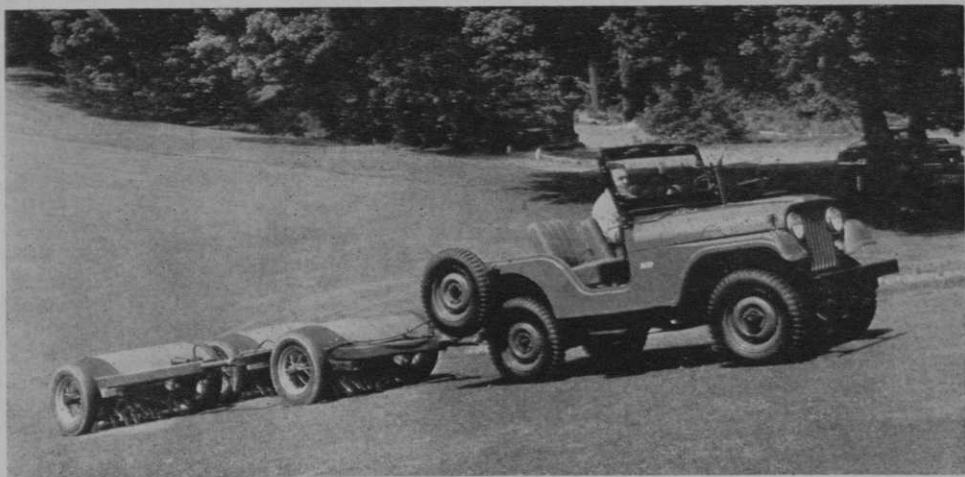
Philadelphia CC to build \$1 million club-

**STANDARD**  
**"Golfball"**  
**WASHER**

- Guaranteed for one full year of service without repairs.

Cleans one ball or six in same operation. No slushing, splashing, squirting or slopping. No pinched, skinned or bruised balls. Order now. Prompt delivery.

**STANDARD MANUFACTURING CO.**  
Box G55 CEDAR FALLS, IOWA

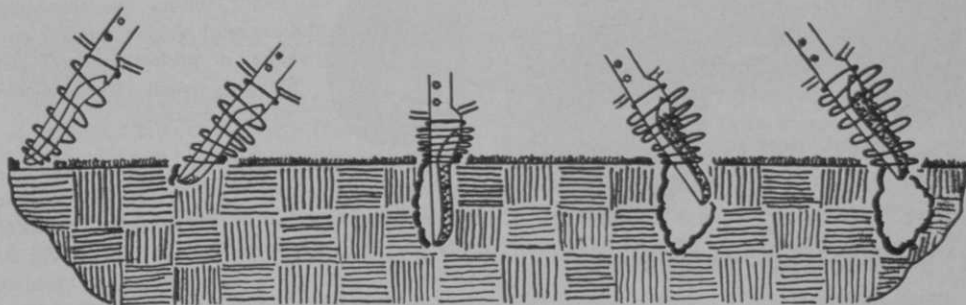


## the AERIFIER\* is Basic to Fall Turf Improvement

- develop deep extensive grass root systems
- obtain greater value from fertilizer
- allow penetration of fall rains
- prepare a good seedbed in established turf
- provide a light topdressing to level surfaces
- keep fertilizer and grass seed on slopes

1 man and 1 Jeep or tractor can aerify about  $3\frac{3}{4}$  acres an hour with the Aerifier Triplex Gang;  $2\frac{1}{2}$  acres an hour with the Grasslan or Tractor-Lift model.

Use the AERI-LINX Dragmat after aerifying.



*West Point Products Corporation*

*West Point, Pa.*

\*Reg. U. S. Pat. Off.

Sold in U. S. and Canada

Pat. No. 2,580,236

September, 1955

## SPECIAL ANNOUNCEMENT

Mock Seed Company has been appointed national distributor of the famous

### Pennlu Bentgrass

stolons grown by Tenos Brothers of Wexford, Pa. With 33 years experience in the growing of lawn, golf and athletic field turf, the Tenos organization is growing Pennlu Bentgrass from propagating material direct from the original breeding plots at Pennsylvania State University. To assure prompt and efficient distribution of these Pennlu stolons, the Mock Seed Company has lent its highly regarded processing and merchandising know-how. Mock's well earned reputation for highest quality and fair dealing, combined with the painstaking care of the Tenos "Emerald Turf" Nursery in skilled turfgrass production will guarantee you the best of satisfaction in every aspect of your dealings with them.

Write for complete price and availability data on new crop Pennlu Bentgrass stolons—receive free our new research paper on Pennlu Bent.

We also welcome inquiries on Merion Bluegrass and other items in our large stock of fine turfgrass seed.

**MOCK SEED COMPANY**  
**PITTSBURGH 30, PA.**

house, swimming pool, tennis and squash courts . . . A. J. Stanley munny course at New Britain, Conn., to be enlarged by 9 holes . . . Chester, Pa. considering munny course . . . New Orchard Valley CC, Syracuse, N. Y., to be opened in spring, 1956.

Bill Mitchell, former supt., now golf architect and turf nurseryman, subject of interesting column by Bob Cooke in NY Herald-Tribune . . . Fine column on Bill also done by Hal Boyle, Associated Press feature writer . . . Column missed a bit in his figures in naming Mitchell as "one of perhaps 15 men who design America's golf courses." . . . There are a lot more than 15 . . . And in saying there are "about 7500 courses in the country." . . . There aren't 5200 courses in the U. S. being played today, although current construction will have around 5200 operating in 1956.

Grove, Okla., organizing golf club . . . Bucklin Ks., building course . . . Council Bluffs, Ia., planning new 9-hole course and clubhouse . . . Long Beach, Calif., golfers petition council for 18- and 9-hole course to be built near municipal airport . . . Loveland, Colo., Jaycees campaigning for



MODEL NCRP-EG

This LARGE Royer Shredder will eliminate costly and backbreaking hand shovelling. It can handle the charge of an eight cubic foot tractor bucket as rapidly as the bucket can be brought into charging position, making large capacity shredding a one man proposition.

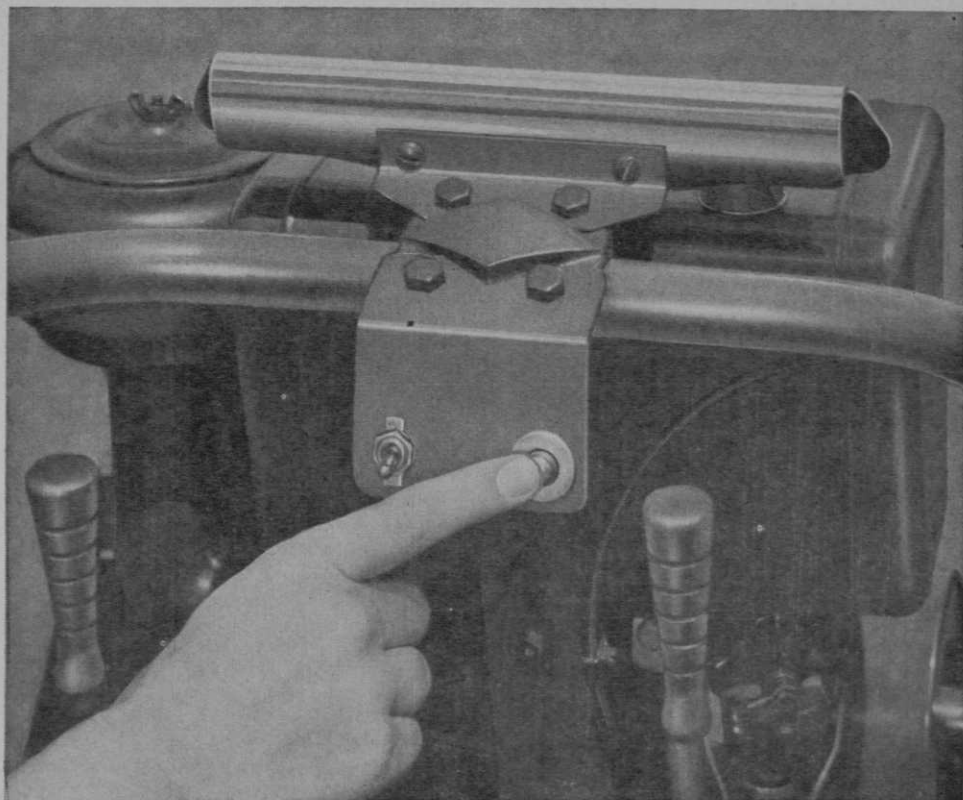
The material fed into the hopper is combed from the bottom by the rapidly moving teeth of the "combing belt". During the shredding the material churns rapidly, providing a perfect mixing and blending action for production of top dressing.

There is a Royer that will do your shredding or mixing job at low cost . . . regardless of your capacity requirements . . . from 4 to 150 cubic yards per hour. Write for Bulletin 55-S giving information on all models . . . stationary or portable . . . electric motor, gasoline engine or belt-tractor driven.

for  
"mechanized" shredding  
and mixing

**ROYER foundry & machine co.** 

171 PRINGLE ST., KINGSTON, PA.



## TORO adds PUSH-BUTTON starting to the world's finest power mowers!

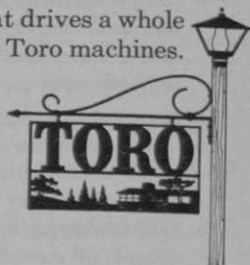
Now—after years of testing—an electric starter to match the well-known ruggedness of Toro heavy-duty mowing machinery!

A compact 6-volt battery packed with rechargeable power; a tiny, heavy-wound starter motor built for years of faithful service; a simplified, over-riding clutch starter-mechanism—that's all there is to it!

As optional equipment, you can have the ease of push-button starting on the Toro Park Special, the Toro Starlawn,

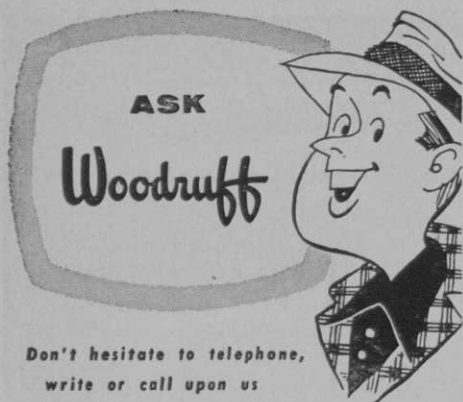
the 24 and 31 inch Toro Whirlwinds, and the mighty Toro Professional. It's even available (with a plug-in power supply of 110-volt current) on the new 20-inch Whirlwinds, the 21-inch Sportlawn and the revolutionary Toro Power Handle—the power unit that drives a whole family of standard Toro machines.

Your Toro distributor can give you complete information. See him soon!



**TORO MANUFACTURING CORP., Dept. G-95, Minneapolis 6, Minn.**





Don't hesitate to telephone,  
write or call upon us

Inquiries for quotations and special analyses of grass seed are handled quickly. Any usual or unusual grass condition peculiar to your area may require a particular knowledge of seed habits based upon tests in different sections of the country. Our results of such tests are yours for the asking.

The larger users of lawn seed ASK WOODRUFF and rely upon Woodruff answers. Dept. G25.



F. H. WOODRUFF & SONS, INC.

Milford, Conn. • Toledo, Ohio  
Bellerose, L.I. • Atlanta • Sacramento  
Dallas • Salisbury, Md. • Mercedes, Tex.

building a muny course.

Albuquerque, N. M., public schools planning to build course . . . Lawrence, Neb., has new 9-hole sandgreen course . . . Dell Hemphill now pro-mgr., Iola (Ks.) GC . . . New clubhouse for Crystal Springs GC, San Francisco muny course . . . Clarksdale, Miss., raising money for building public course . . . Neenah, Wis., considering buying Bridgewood 18-hole semi-private course and converting it to municipal course.

Construction begun on 9-hole course for March Fair Force Base in California . . . Lions Club at Cheney, Wash., sponsoring 9-hole course . . . Lawton (Okla.) CC enlarging from 9 to 18 . . . Floyd Farley is architect . . . Roseville (Calif.) CC increasing from 9 to 18 . . . New clubhouse at Goodland (Ks.) CC opened . . . Charles Tiede is pro-supt.

Chambersburg (Pa.) GC in \$71,000 course and clubhouse improvement program . . . Michigan State college to have 18-hole course designed by Bruce Matthews . . . Heppner, Ore., discussing building course . . . Expect to have new semi-private Belmont Park 18-hole course at Fresno, Calif., in play next spring.

## AMAZING NEW LAWN FOOD FOR GOLF COURSES . . .

made so it  
**won't burn  
grass**

when used in recommended amounts!

- Longest-lasting, most complete food for turf ever developed—opens a whole new era of deep-rooted, velvety beauty for both your greens and fairways.
- No watering-in or special care required—and far more economical because it yields its nutrients slowly and does not draw water from turf.
- Exhaustively plot-tested, under all conditions, all over the country, to nourish any grass as well as all the Bents.



## SWIFT & COMPANY

Vigoro is a registered trade-mark of Swift & Company. Copyright 1955, Swift & Company  
Pat. Nos. 2618546, 2618547 and others pending