



GRASS SEED
FERTILIZERS
MOWERS
TRACTORS
SPRINKLERS
FUNGICIDES

Plan Now

Check your list of needs for the coming year while they are still fresh in your mind. Take advantage of our complete line of supplies and equipment for golf courses.

Write us today

George A. Davis Inc.

5440 Northwest Highway, Chicago 30, Ill.

SAVE WORK! SAVE TIME! SAVE MONEY!



Simply add a few gallons of
Campbell's Liquid

GRO-GREEN

with Foliage Dietene

to regular spray solutions and
fertilize greens, tees, fairways,
flowers and shrubbery IN
ONE OPERATION!

It's fast, easy, practical. You save labor, time, money! Because GRO-GREEN—with Foliage Dietene added—mixes quickly, thoroughly with all popular chemicals, for simple "one-stop" spraying. Contains the essential elements nitrogen, phosphorous, potassium plus many enriching hormones, vitamins. Apply as often as needed, for richer coloring, hardier growth, less brown-spotting, lusher fairways, sturdier root systems that take heavier traffic.



Gro-Green is formulated to your specifications—
10-15-5—15-10-5—15-5-5—32-0-0—or whatever
desired, comes in crystal form also.

- **Greens:** Apply with regular sprayer. 1 gal. Gro-Green to 20 gal. spray solution. Covers approx. 10,000 sq. ft.
- **Fairways:** Regular Sprayer. Use 2 gal. per acre with 8 gal. of water.
- **Tees, Shrubby, Flowers, etc.:** Use regular sprayer. 1 gal. Gro-Green to 100 gal. water or use Automatic Gro-Gun on hose.

Sold on money back guarantee.

Mail coupon for FREE details, name of
Manufacturer

H. D. CAMPBELL CO.
Rochelle 14, Illinois

H. D. CAMPBELL CO.
Rochelle 14, Ill.

Please send me FREE DESCRIPTIVE LITERATURE, and Free Samples about Gro-Green.

Desired Formula

NAME _____

COURSE OR CLUB _____

ADDRESS _____

CITY _____ STATE _____

Britain which members gave Jack and the Mrs. in recognition of Jack's long and fine service to the club . . . Jack says heat spell had quite a few British courses in bad condition . . . Same as in the U. S. . . . Members and fellow pros held a day for Tom Kerrigan, pro at Siwanoy CC (N. Y. Met dist.) for 40 years . . . At the party Tom was presented with gold watch as members' gift.

John Pottle to Augusta (Ga.) National GC as mgr. . . . Gordon Brinkworth from Brookwood CC (Chicago dist.) to Olympia Fields CC (Chicago dist.) as supt. and succeeded at Brookwood by his former asst. Joe Venturella . . . Don Gerber, son of Ray, supt., at Glen Oak CC (Chicago dist.), goes to Chicago GC as supt. . . . Floyd Sanders, formerly asst. to Bob Williams, supt., Beverly CC (Chicago dist.) to be supt. at Ridge CC (Chicago dist.)

Walter Reavely, pro at Town House Golf Center, New York City, indoor golf school, says many young women are taking up golf because golf courses are where the most desirable husband material can be found . . . John Handweg, farmer who turned to golf course build-

SNOW MOLD

- is easily, surely and economically controlled with regular applications of

PMAS

The proven

HERBICIDE-FUNGICIDE

...also controls

- CRABGRASS
- COPPER SPOT
- DOLLAR SPOT
- BROWN PATCH
- PINK PATCH
- Helminthosporium-
- Curvalaria



W. A. CLEARY CORP.
NEW BRUNSWICK, N. J.

Leaf Disposal Easy, Inexpensive with WOOD'S Tractor Mulchers



MODEL 80 (61 similar)

- FASTER THAN REEL TYPE
- FASTER THAN SICKLE BAR
- LESS EXPENSIVE TO USE

Wood's PTO-operated tractor rotaries do a clean and even job of mowing grass down to an inch high or cutting thick waist-high brush. Easy and accurate adjustment is handy on all models.

There are 12 models available in hydraulic lift or drawbar pull-type for any size tractor—42" to 114" cut—adjustable from ground to 14" high. Wood's cutters mow, clip or shred and mulch leaves—close to trees, fences or buildings.

There are 1, 2 and 3 blade models. Blades overlap for clean cutting. Equipped with shock absorbing V-Belt drive, $\frac{3}{16}$ " boiler plate housing, 15" drop-center wheels or 8" with non-pneumatic tires. All working parts enclosed.

Large Selection of Models

Model 42C, 42A—42" cut, single blade, for Farmall Cub and Super A. **Model 42F**—Same as 42C but rear-mounted for the Fast-Hitch Cub. **Model 5**—60" cut, single blade, for 2 plow tractors. **Model M5**—Same as 5 but mounts on 3-point hitches such as Ford. **Model 61**—61" cut, double blade, for 2 plow tractors. **Model M61**—Same as 61 but mounts on 3-point hitches. **Model 80**—80" cut, double blade, for 2-3 plow tractors.

MODEL O-80—Same with offset drive for working under low trees. **Model M80**—Same as 80 but mounts on 3-point hitches. **Model 114**—114" cut, triple blade, for 3-4 plow tractors. **Model 114E**—Same as model 114 but with mounted engine for use with small tractors.



MODEL 114



MODEL 5

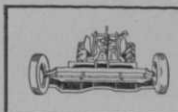


MODEL 42C (42A similar)



MODEL M80 (M61 similar)

LEAF MULCHING ATTACHMENT



Leaf Mulcher available for Models 42F, 42C, 42A, 61, M61, 80 and M80.

FAST-HITCH 42F



FOR COMPLETE INFORMATION WRITE, WIRE OR CALL COLLECT
WOOD BROTHERS MFG. COMPANY
19510 SOUTH 4th STREET • OREGON, ILLINOIS

Progress

TEE MARKERS



MODEL NO. 6

Beautify with these attractive tee markers—custom made for your course—in 5 styles and colors. Designed to set on the turf at a 30 degree angle for clear visibility. Made of high grade cast aluminum.

Write for our folder describing and pricing
Progress Tee Markers.

PROGRESS FOUNDRIES INCORPORATED
1457 Marshall Ave. • St. Paul 4, Minn.

ing and operation, subject of story in New York Times . . . Handweg's fourth course, Empire State CC at Spring Valley, N. Y., designed by Orrin Smith, nearing completion.

Nevada Golf Assn. amateur, junior and senior championships being held at Wilbur Clark's Desert Inn course, Las Vegas, Nev., in October . . . Andy Angitis won the Foot-Joy salesmen's tournament at P. G. Flint's private course, Oak Lawn, at Monument Beach, Mass.

James Gilmore Harrison redesigning Highland CC course at Pittsburgh, Pa. . . . Harrison also is architect and builder of new Maplehurst CC, near Frostburg, Md.; new Sleepy Hollow CC at Nitro, W. Va.; new Walnut Hill CC, Columbus, O.; and second 9 for Lakeview (W. Va.) CC.

Alfred H. Tull architect of 9-hole course now building for International Paper Co. at Georgetown, S. C. . . . Tull-designed new course for Pelham CC (NY Met dist.) now in play . . . Construction being completed on Tull-designed courses at Elmwood CC, Passaic County Park commissions third 9, Bethpage's fifth 18 and Harbor Hills CC; all in N. Y. dist.

Mitchell Brothers building their own



- PENNLU
- WASHINGTON
- COHANSEY (C7)
- ARLINGTON (C1)
- CONGRESSIONAL (C19)

HIRAM F. GODWIN & SON

22366 Grand River Ave.

Detroit 19, Mich.

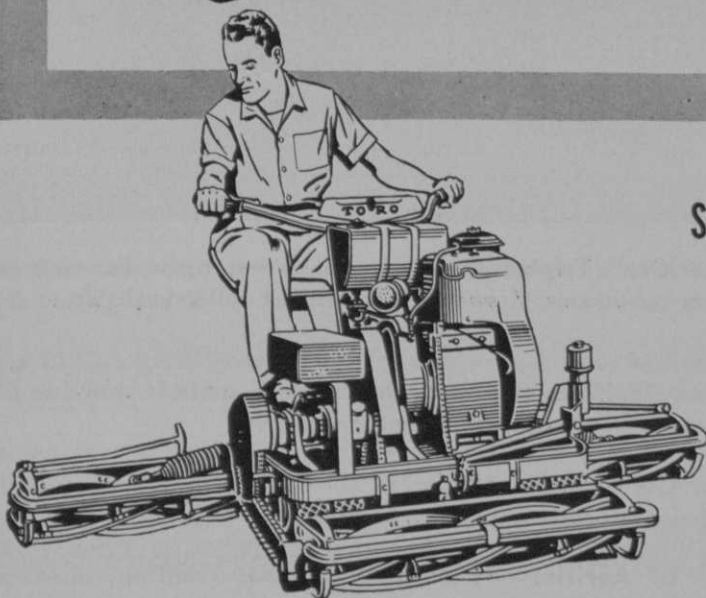
BENT GRASS

*A Reliable Source
of Supply Since 1920*

Our stolons are true to name, weed and seed head free and in vigorous growing condition. As a proof that we know how to keep our strains pure, our present Washington exactly matches that we sold in the 1920's.

GET IT FROM

Goldthwaite's
TEXAS TORO CO.



**SOUTHWEST'S
EXCLUSIVE
TURF
EQUIPMENT
HOUSE**

**DISTRIBUTORS
OF**

TORO

**MOWING
EQUIPMENT**

- Buckner Sprinklers
- Milorganite Fertilizer
- West Point Aerifiers
- Bean Power Sprayers
- Fungicides — Insecticides
- Water Hose
- Standard Golf Course Accessories

PROMPT SERVICE • THREE CONVENIENT LOCATIONS

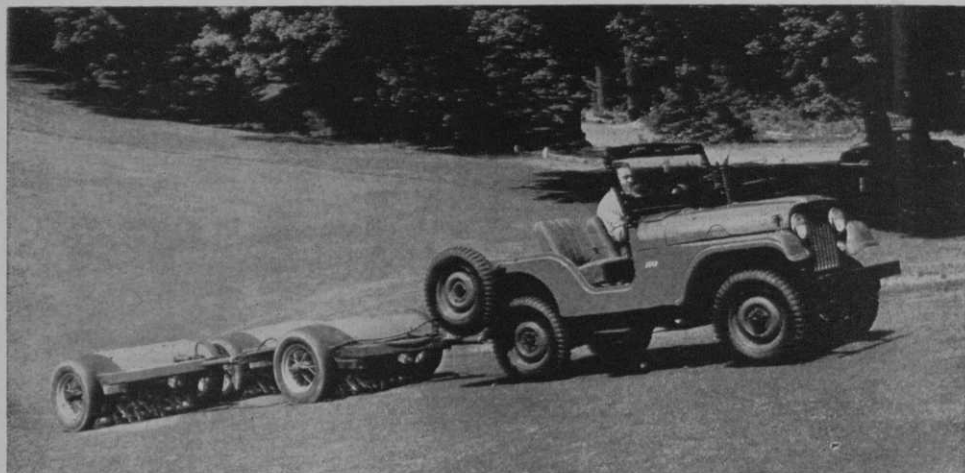
**122 S. Main
FORT WORTH, TEXAS**

**4404 Main
DALLAS, TEXAS**

**1645 Bissonnet
HOUSTON, TEXAS**

Serving Texas and the Great Southwest Since 1928

Superior Golf Course Turf



F-G Aerifier* Triplex Gang—tractor-drawn; hydraulic control; cultivates continuous 9' swath; water ballast roller available to fit frame.

Grasslan Aerifier—tractor-drawn; hydraulic control; cultivates 6' swath; two section water ballast roller available.

Tractor-Lift Aerifier—attaches to Ford, Ferguson or other tractor with 3-point suspension; cultivates 6' swath.

Model "U" Aerifier—tractor-drawn; hydraulic control; cultivates 4½' swath.

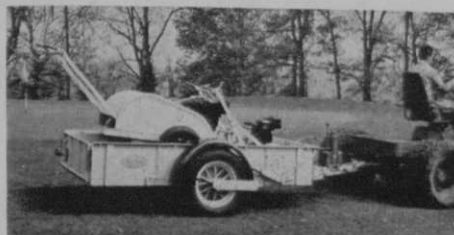
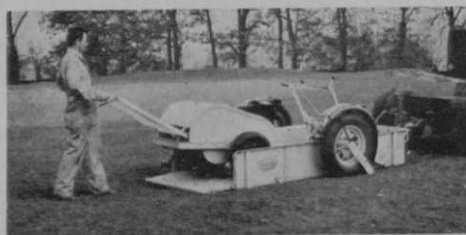
Aeri-Linx Dragmat—large, lightweight dragmat for fairways.

Flexi-combs—fit popular make fairway mower units; lift grass and runners to be cut by mowers.

Aer/Lift—hydraulic trailer lowers down to ground level for safe, easy loading and unloading of equipment and supplies.

*Req. U. S. Pat. Off.

Pat. No. 2,580,236



with West Point Products

G-L Aerifier—power on cultivating reel; power on transport wheels; cultivates 24" swath; water ballast roller available to fit frame.

Junior G-L Aerifier—power on cultivating reel; power on transport wheels optional; cultivates 20" swath; water ballast roller available to fit frame.

Verti-cut—vertical mower to control grain and thatch on putting greens.

Turf Pluggers—available in 4" diameter single plug type; 2" or 2³/₈" diameter magazine type which hold 15-20 plugs.

Crab-E-Rad†—di sodium methyl arsonate formulation for safe, effective eradication of crabgrass on fairways, tees and greens.

Liquiphene†—turfgrass fungicide; 33¹/₃% Phenyl Mercury Acetate solution for control of many common turfgrass diseases.

West Point Atco Greens Mower—improved Atco mower for putting greens; 12 blade reel; laminated steel blades resist abrasion.

Further information about any of these West Point products may be obtained from your West Point distributor or by writing to us.

West Point Products Corporation

West Point, Pa.

Sold in U.S. and Canada

†Trademark of Vineland (N.J.) Chemical Co.





For **SUPERIOR**
design, construction
and performance

AMERICAN *Approved* PLAYGROUND EQUIPMENT

Since 1911 the finest equipment built,
backed by lifetime guarantee against
defective materials and construction.

Write for Literature

AMERICAN
PLAYGROUND DEVICE CO.
ANDERSON, INDIANA, U.S.A.

WORLD'S LARGEST MANUFACTURERS OF FINE
PARK, PICNIC, PLAYGROUND, SWIMMING
POOL AND DRESSING ROOM EQUIPMENT

BRANCH PLANT AT NAHMA, MICHIGAN

9-hole course in their home town, North Sutton, N. H. . . . Later may be enlarged to 18 . . . Bill Mitchell and his team also building Mt. Pleasant CC, Boylston, Mass., and P.C.G. Realty Co. Mahopac, N. Y. 18-hole courses.

Ralph Plummer, Dallas, Tex., architect and builder, keeping himself and his staff working around the clock . . . Plummer job of Gainesville (Tex.) 9-hole muni course opened Labor Day with Frank Stagner as pro-mgr. . . . Some other Plummer jobs now in progress: Eastern Hills CC, Garland, Tex., construction completed and high pressure hoseless system watering turf planting . . . Lafayette Franks pro-supt. at Eastern Hills . . . Finish planning Tennon Park, Dallas, second 18 . . . Remodeling Brook Hollow at Dallas with Supt. Bill Patten doing building, which will be in play next April . . . Port Arthur CC on former rice field opens in Sept. with beautiful turf . . . Gene Tift greens . . . Sod webworms delayed opening.

More Plummer work: Fast work on Tenn Gas Transmission Co. Employees' Club at Tennwood, 40 miles from Houston . . . Dirt work on greens, tees,

New! Improved

WESTALL
RUBBER FLOORING

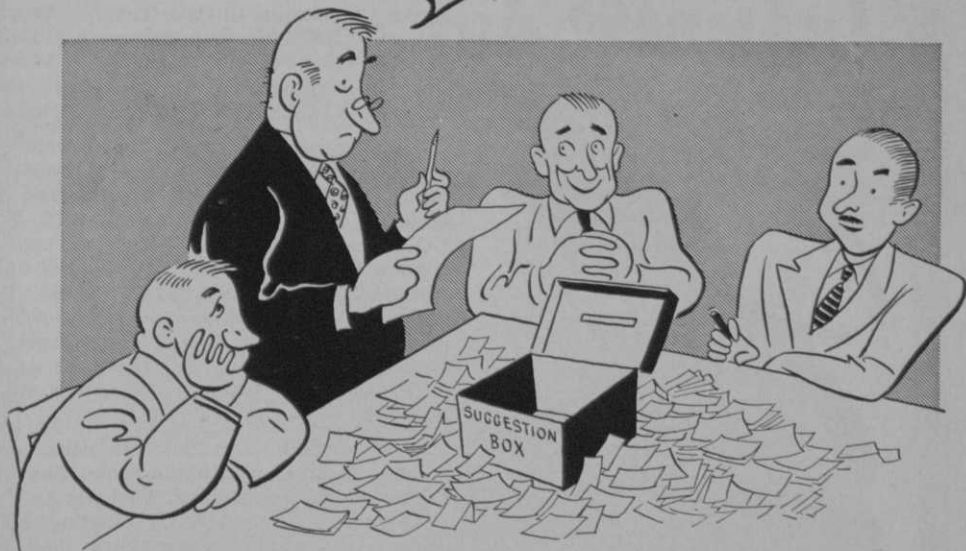
Lower Priced!

We are pleased to announce this new rubber flooring now being offered in plain and embossed surfaces in choice of red, green, or sand colors. Write or wire for samples and information.

- PROTECTS CLUBHOUSE FLOORS FOR YEARS!
- LONGER-WEARING, TOUGH, FIRMI
- SO SMOOTH, SAFE AND EASY TO CLEAN!
- DOES NOT BUCKLE, STRETCH OR CRAWL!
- COMES IN ROLLS UP TO 24 ft. LENGTHS, 5/16" THICK AND 36" to 46" WIDTHS.

HENRY WESTALL COMPANY
944-960 Merrimon Ave., Asheville, N. C.

**245 WANT POWERS SAFETY SHOWERS
AND ONE WANTS A BATHTUB**



**They forget they didn't make pars—
when they get Powers in their showers**

**Powers safety mixers assure players the perfect shower
that makes it a perfect day. No sleety shocks or
scalding surges to upset them.**

Powers Thermostatic Shower Mixers are *safe*, because they make dangerous extremes in temperature impossible; *comfortable* because the temperature stays constant wherever set; *economical* because they do the job quickly without wasting hot or cold water.

Keep your players happy and relaxed with

Powers mixers — and protected against shower water accidents. Just one accident might cost your club many times the amount required to equip all your showers with Powers.

Use the coupon below to get Circular H48 with its valuable information on modernizing your showers.

NOT THIS



OR THIS



BUT THIS



THE POWERS REGULATOR COMPANY
3400 Oakton Street, Skokie, Illinois

- Please send Circular H48 and prices
- Have an engineer call

Name _____ TITLE _____

Club _____

Address _____

BTG

Tufhorse GOLF BAGS



Model
L672

An EYE-CATCHER
for EASY SALES

A quality golf bag destined for instant popularity, this deluxe 9-inch Keystone is styled for eye-appeal and rugged wear. Body is of two-tone, heavyweight colored duck; the trim is top-grain leather. It's made to match the finest yet sell at a popular price. Available in several color combinations.

Remember! The Tufhorse Line is
Ahead in Design.

MacGregor
THE GREATEST NAME IN GOLF
4861 Spring Grove Ave., Cincinnati, Ohio

DES MOINES GLOVE & MFG. CO.
DES MOINES, IOWA

bunkers, reservoir, done in 30 days . . . 14,000 ft. 6-in. welded steel pipe for Buckner system enabling one man to water course in 12 hours, installed in 20 hours . . . Course opens New Years Day, 1956 . . . Finish plans for Rolling Acres CC, Corpus Christi, Tex. . . Working on plans for new course for Lake Charles (La.) CC new course . . . Working on remodeling at Braeburn CC, Houston and Lakewood CC, Dallas.

Joe Conrath now mgr., Longwood CC (Chicago dist. semi-public) . . . Fremont, Mich., organizing Ramshorn CC and to build 18 holes . . . Chamberlain (S. D.) CC opens new course . . . Previous course condemned by govt. in Fort Randall dam project . . . Govt. paid club \$90,000 . . . South Dakota forestry dept. will consider lease deals with sound organizations building and operating courses on state park land . . . Harry Woodward is state forester.

Leo Seltzer, industrial exhibition and sports promoter who made Roller Skating Derby a big success, in real estate development group which is building Bell-designed course in community development west of Lancaster, Calif.

PHILLIPS CAM LOCK



The world's finest and best known.
Will not turn or break apart.
PRO'S CHOICE

F. C. PHILLIPS, INC.
STOUGHTON, MASS.