

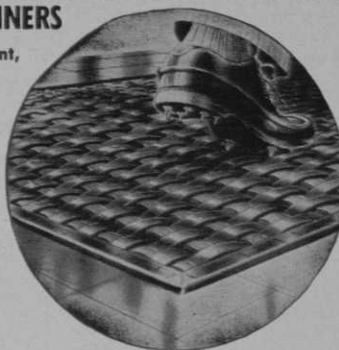
## PNEU-MAT-RUNNERS

Are Spike-resistant,  
Tough and Durable

Protect Clubhouse  
Floors from Spikes

Provide Soft Rug-like  
Cushion Under Foot

Are Reversible for  
Added Wear



STANDARD  
WIDTHS!  
20"-24"-30"  
36"-42"-48"

TRIAL SECTIONS  
24"x60"—\$10.00  
20"x24"—\$ 4.00  
Postpaid

Write Today  
for Details

SUPERIOR RUBBER MFG. CO., INC., 122 East 25th St., New York 10, N. Y.

## KENNETH SMITH PRESENTS NEW KENWIN STOCK CLUBS

Kenneth Smith, Box 41, Kansas City 41, Mo. now has his new line of Kenwin pro-only stock woods and irons in pro shops.

The clubs will not be made to chart, but



will be made in most frequently needed lengths and weights and in matched sets with variations from set to set so a pro can get a wide variety in normal specifications.

The wood heads are laminated with a strong, waterproof insert face, center-spotted. The irons are the finest stainless steel Smith has used in his custom-made clubs for many years.

## MACGREGOR ISSUES 1955 PRO-ONLY CATALOG

MacGregor Golf Co., 4861 Spring Grove Ave., Cincinnati 32, O., has issued its "Exclusively Pro" catalog of clubs, balls, bags and accessories. It's the best looking book for the best looking line the company has put out in its years of making quality goods for the pro trade.

In addition to complete data and fine illustrations of the equipment the book contains informative charts showing the deflection (stiffness or flexibility) of MacGregor's True Temper Tourney Shafts.

## ACTI-DIONE TO HAVE NEW CONVENIENT PACKAGE

The Upjohn Co., Chemical Sales Dept., will announce a new package for its antibiotic turf fungicide, Acti-dione Ferrated, in June, 1955. The yellow and black attractive cardboard package has the same appearance as the Actispray package, a product announced in March 1954 for cherry leaf spot.

The small self-pouring envelope will contain 9 grams of Acti-dione. This envelope is placed inside the bottle containing approximately 8 oz. of ferrous sul-

## Pro-Grip

is prepared especially for the leather grips of Golf Clubs. It gives a firm, tacky grip with light hand pressure, permitting an easy relaxing rhythmic swing. Your accuracy will improve, you'll feel relaxed—and those "Extra Strokes" will vanish.

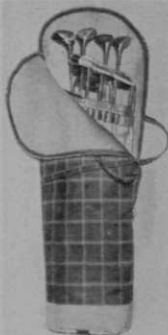


PRO-GRIP Grip Wax contains LANOLIN and is medicated.

MANUFACTURER'S SPECIALTY CO., INC.

2736 Sidney Street

St. Louis 4, Mo.



Every golfer will want  
a

## CENTURY CARRIER

for travel, storage and shipping. Solid colors or scotch plaids. Beautifully tailored of durable materials. Write for circular - Swatches and prices.

CENTURY  
SPECIALTY CO.

836 W. Roosevelt Rd.  
Chicago 8, Ill.

## GOLF PRINTING

Score Cards

Charge Check Books

Stationery for Club and Pro

Handicap Cards and Panels

Fibre Bag Tags and Hooks

**VESTAL CO., 701 S. LaSalle**  
Chicago 5 Phone: HArrison 7-6314  
Established 1912

## ATTENTION

Driving Range Operators and Dealers. We specialize in rebuilding golf balls with strictly new materials. Satisfaction guaranteed.

### WAYNE GOLF BALL CO.

31117 Little Mack  
St. Clair Shores, Michigan

fate. When mixed, the two chemicals provide sufficient fungicide material to spray three average greens.

The new package is more convenient to handle and replaces the old style carton which contained two separate bottles. A 12-package case provides sufficient material for two complete sprayings of an 18-hole golf course.

### PEDERSEN'S NEW PROSONIC SHAFTS RADICAL CHANGE

Pedersen Sales Co., Wilton, Conn. reports that sales of irons and woods with Pedersen's new ProSonic shaft, highly satisfactory in fall orders, have jumped higher since pros have played the revolutionary new shaft during the winter.

The shaft looks upside down, with the strong end at the clubhead, but the feel is most agreeably effective, pros have told the Pedersen men. The firm end of the shaft is at the hitting end, thus, according to the manufacturer's statement, eliminating distortion at impact, "giving" or "shying" away from the ball.

The ProSonic is available in a firm AS type for the strong hitters, a medium A type and a B type which is more flexible.

The shaft is available with all Pedersen

woods, irons or putters, at standard top quality prices. It is pro-only.

### THREE MORE APPAREL BRANDS ARE ADDED TO BARNETT'S 1955 LINE

Grant A. Barnett, 707 Main St., Buffalo, N. Y., exclusive distributor of the Golfer's Keep Warm garment, announces the addition of two nationally known brands of apparel to the lines for which he has national distributorship for the golf professional trade. Barnett's new lines are the "Rugby" line of cashmere sweaters and "Rugby" tee shirts, "Wilton" cotton cashmere golf shirts, "Footlets", a Randolph Knit brand, and "Grip-Tite", the cake-form grip compound. Last fall Barnett was appointed national distributor to pro shops for the Ripon line of sport and dress hose. Rugby sweaters and tee shirts, as well as Wilton's cotton cashmere shirts, will be shipped to pros in poly ethylene bags. 5 styles of sweaters and 7 styles of tee shirts are in the Rugby line. The Wilton line of cashmere cotton shirts leads off with one style to be supplemented with others later on.

"Footlet" hose line includes a 100% nylon Helanca, fitting women's sizes 9 through 11; 2 dress numbers, one a sheer

## TEE MATS

★ For the **FINEST, LONGEST-WEARING** and **MOST ECONOMIC** Tee Mat on the Market! *Nationally acclaimed by golf clubs and ranges as the best buy.*

★ SEND TODAY FOR LOW PRICES

Merchants Tire Co., 2710 Washington, St. Louis 3

## GOLF RANGES

### MINIATURE GOLF COURSES

We Have a Complete Line  
of Supplies

Write for prices

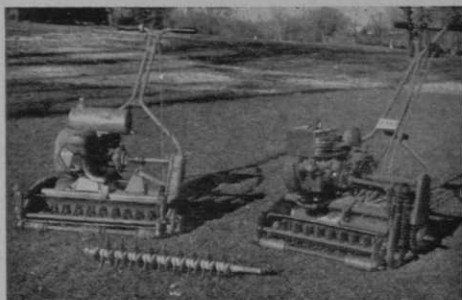
### EASTERN GOLF CO.

Dept A  
2537 BOSTON RD.  
BRONX 67, N. Y.

## PAR-THATCHER\* REEL SAVES ON EQUIPMENT EXPENSE

For easy, low cost thatch removal on bent greens Bermuda tees and on aprons for re-seeding. Designed by M. M. Parsons, leading Golf Course Superintendent. Install a Par-Thatcher Reel in an idle greensmower — models to fit most Toro and Jacobsen greensmowers. Ask your local golf course equipment dealer for a demonstration, or write. Now ready! Fairway model to fit Worthington gang mowers.

\*Patent Applied For



**LAWRENCE J. MEISEL DISTRIBUTING CO. 440 S. Brentwood Blvd., Clayton 5, Mo.**  
EXCLUSIVE DISTRIBUTORS IN U.S.A. AND CANADA

nylon with a cushion sole, the other a full "Footlet" of Helanca with foam rubber heel.

Information and prices on the complete line and name of nearest distributor by writing Grant Barnett.

### DU PONT NAMES MILLER TURF CHEMICALS SPECIALIST



The Du Pont Co. has appointed a full-time turf specialist to handle development and service work on turf applications of the company's pest control products and soluble plant food. Among the pest control chemicals currently used are seed disinfectants, turf fungicides, weed killers, and insecticides.

The new position is filled by Robert T. Miller, North Wales, Pa. He has represented the Du Pont seed disinfectant section in the North Atlantic states for about

five years. In his new position, he will cover these states and his activities will extend into surrounding states to the west and south.

Miller is already familiar to many turf authorities and superintendents for his work with grass seed treatment and turf fungicides, and his knowledge of the agronomic basis for producing healthy turf. A graduate of Clemson College, he had considerable experience in the fertilizer business before joining Du Pont in 1950. He will continue to live in North Wales, with headquarters at the Philadelphia office of Du Pont's Grasselli Chemicals Dept., 1617 Pennsylvania Blvd.

### FINNEY APPOINTED BY JOYCE SHOE IN SOUTHWEST

Bowen and Hull, Inc. have appointed Ed Finney sole sales representative for Wm. Joyce golf shoes in California, Arizona and Nevada. The Finney appointment became effective Jan. 1, following his 6 months' association with the company.

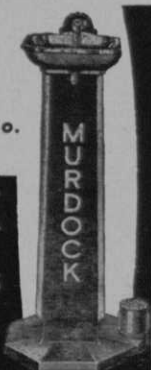
Don MacCracken, formerly with Bowen and Hull in the 3-state area and later in sales promotion and publicity work, is no longer with the company.

**INSTALL NOW  
FOR SUMMER!**

Write for FREE Catalog

The MURDOCK Mfg. & Sup. Co.  
Cincinnati 2, Ohio

**MURDOCK**  
OUTDOOR  
DRINKING FOUNTAINS  
HYDRANTS  
LAWN HOSE BOXES



Specializing in  
**F-74 FESCUE and  
MERION BLUEGRASS**

and stocking the finest in all  
varieties of grass seeds

TRUE TO TYPE · HIGH GERMINATION · HIGH PURITY

**YOUNG & HALSTEAD CO.**

Mt. Kisco, New York

## ROBERT TRENT JONES

Member:  
American Society of Golf Course Architects

### Golf Course Architect

20 Vesey Street  
Tel: Rector 2-2258  
NEW YORK, N. Y.

## WILLIAM P. BELL AND SON

### GOLF COURSE ARCHITECTS

Member: American Society  
of Golf Course Architects

544 Sierra Vista Avenue  
Pasadena 10, California  
Sycamore 3-6944 Atlantic 7-2933

## CHARLES E. STEWART

Registered Engineer

Water Supply • Pumping Plants  
Irrigation • Drainage  
Reports • Designs • Supervision

18357 Homewood Ave., Homewood, Ill.

## The one and only JOE KIRKWOOD

### GOLF'S GREATEST SHOW

Amusing, Spectacular and Highly  
Instructive Indoor and  
Outdoor Shows Arranged.

For Booking Details Write:

JOE KIRKWOOD  
5843 W. Division St. Chicago 51, Ill.

## BRADLEY BROTHERS ISSUE COURSE SUPPLY LIST

C. Kent, Dave and Paul Bradley, Mountain View, N. J. have issued a lengthy list of items made and/or distributed by them for use in golf course maintenance. There are more than 50 items provided by the Bradleys who have had considerable practical experience in golf course maintenance work prior to their successful entry into the course equipment manufacturing and distributing business.

Norman Faunce, veteran Chicago district professional, now is making a "Pro's Aid" Instruction Tee, a simple and sturdy teaching and practice device which helps put across the idea of swinging from the inside out.

## CUSHMAN ADDS ELECTRIC "GOLFER"

Cushman Motor Works, Inc., Lincoln, Nebraska, manufacturer of light transportation, announces the new Cushman Electric "Golfer," a machine incorporating Cushman quality features plus the advantages of electric motive power for silent and economical operation on the golf course.

The "Golfer," which will travel 36 holes and more without recharging, carries two passengers and has carrier space for as many as four golf bags. It will travel anywhere on the course, climbing hills with-



out trouble, and has a low center of gravity with a ground clearance of  $4\frac{1}{2}$  inches.

The "Golfer's" all-steel body is set on a heavy duty three-wheel chassis with a single steering wheel in front, two differentially operated wheels in the rear driven by two heavy-duty wedge belts, has two speeds (5 and 11 MPH) forward and one reverse. It has a 99 inch turning width; two-wheel mechanical brakes; coil spring suspension on all wheels; and 4.00x8 pneu-

matic tires. It is powered with four 165 ampere heavy duty automotive batteries and a 1 1/4 HP traction type motor. A battery charger and cable come as accessory equipment.

Other accessory equipment for the "Golfer", which can also be used as a runabout off the course, include head and tail lights and an electric horn.

**TABLES DESIGNED FOR SCRABBLE  
WIN LIVELY DEMAND AT CLUBS**

M-K Enterprises, Inc., 2029 Clybourn Ave., Chicago, report lively sales of their Scrabble Turn-Table have continued thru the winter at southern golf clubs as the



popularity of the game continues its pace. At the price of \$3 their standard model is getting the call at clubs where interest in the game requires a half dozen or more tables be kept on hand.

**KENNETH SMITH BUYS  
ELLINGHAM TOOL**

Kenneth Smith, Box 41, Kansas City 41, Mo., has bought the Ellingham Tool Co. of Springfield, Mass., and will continue the business as a department of Smith's soundly established club business.

The Ellingham Co. came into business in 1933, soon after the introduction of the steel shaft, making special tools to meet pro requirements in the repair, adjustment and maintenance of steel-shafted clubs. Later the Ellinghams devised precision instruments for measuring and calibrating swingweight, deadweight and lies of clubs.

The Ellingham brothers, Harold and Stanley, for personal reasons decided to retire from the business and while Smith

**J. PRESS MAXWELL**

*Golf Course Architect*

Member:

American Society of Golf Course Architects

Design

Construction

3855 WALNUT HILL LANE

DALLAS, TEXAS

Tel. DI-8889



**ROBERT BRUCE HARRIS**

*Golf Course Architect*

MEMBER AMERICAN SOCIETY OF GOLF COURSE ARCHITECTS

664 N. MICHIGAN AVENUE CHICAGO 11 - ILL.  
Whitehall 4-6530

**WILLIAM F. GORDON  
COMPANY**

*Golf Course Architects*

DOYLESTOWN, PENNSYLVANIA

WILLIAM F. GORDON DAVID W. GORDON

Member

AMERICAN SOCIETY OF GOLF COURSE  
ARCHITECTS

**James G. Harrison**

**GOLF COURSE ARCHITECT**

Member:

American Society of Golf Course Architects

266 Harrison Road  
Valley 3-3444

Turtle Creek, Pa.  
Suburb of Pittsburgh

**ALFRED H. TULL**  
*Golf Course Architect*

209 E. 49th Street  
NEW YORK 17, N. Y.

# HAVE YOU SEEN PAUL HAHN'S NEW SHOTS?

PAUL HAHN, DEPT. "B"  
ELLINOR VILLAGE, ORMOND BEACH, FLA.

## AMERICA'S BIGGEST SELECTION of GOLF AWARDS



A complete selection of golf trophies, cups, and plaques for tournaments and banquets. Immediate delivery from stock.

and trophies, Dept. No. 212

UNIVERSAL SPORTS AND AWARDS

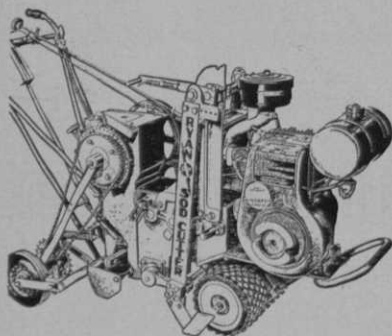
Division of  
Universal Bowling & Billiard Supply  
515 S. Wabash Ave. Chicago 5, Ill.  
Tele. - WAbash 2-5255



says he didn't have any urge to reach out for anything more he felt that it is his obligation to carry on the Ellingham business for service to professionals.

### RYAN HAS NEW POWER SOD CUTTER

Dual rear wheels that have been cast-tered for complete maneuverability and



can be locked in a straight-on position when needed are now standard equipment on the new Ryan Auto-Cut-Off Power sod cutter. A new free wheeling clutch has

also been added so drive wheels can be disengaged for easy moving, forward or backward.

Users of the new Ryan Auto-Cut-Off have praised this new model for its time and labor-saving features. One-man operated, it will cut sod at the rate of 15 square yards per minute, automatically measuring and cross-cutting in the same operation. Desired length of strip can be pre-set from one to nine feet and the Ryan will do the rest.

The Ryan Auto-Cut-Off model has all the features of the standard Ryan, plus the automatic cross-cutting unit. For complete descriptive literature, write to Ryan Landscaping Equipment Co., 871 Edgerton St., St. Paul, Minn.

### JACOBSEN FIRST WITH STARTER ON HOME POWER MOWER

Jacobsen Mfg. Co., Racine, Wis., introduced first self-contained electric starter on a power lawn mower, at the New York National Garden Supply Trade Show.

The innovation was enthusiastically welcomed by multitudes who have wrenched their innards loose trying to yank power lawn mowers into action.

### DBA LIQUID-LUSTRE GOLF BALL WASH WITH RUST PREVENTATIVE ADDED

Insure satisfied golfers by using DBA Liquid-Lustre in your ball washers.

- Costs as little as 2¢ per washer per week
- Safe for washers . . . will not cause rusting
- No unpleasant odor — EVER!

#### ORDER YOUR SUPPLY TODAY!

Per single gallon . . . . . \$4.50  
5 gallons, per gallon . . . . . 4.25

Order from your dealer or direct from DBA and give dealers name.



PRODUCTS CO., INC.

Deerfield, Illinois

For easier and better maintenance of golf greens use our

**LIQUA-VITA** 15-10-5 for fertilizer

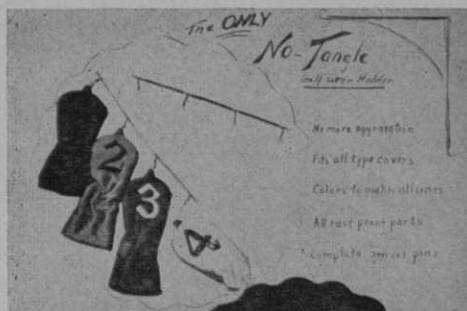
**BLITZ** 48 Chlordane for insect control

**BLITZ** 10 PMA for fungicide and crabgrass control

**American Liquid Fertilizer Co., Inc.**

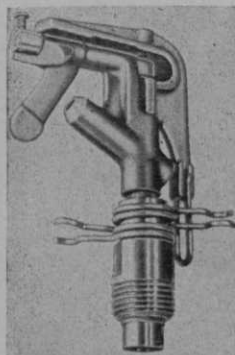
Rokeby Chemical Co., Marietta, Ohio

## NO-TANGLE, HEAD COVER HOLDER



Golfers constantly annoyed by tangled-up or lost strings on their club head covers will be interested in a new device called No-Tangle, manufactured by Pedgy Products Co., Manhasset, L. I. N. Y. No-Tangle is a flexible, rust-proof steel spring, and plastic tube which uses swivel snaps to hold covers, keeping them straight and free of each other. The device fits all sizes of covers and styles and comes in colors to match.

### NEW CAMPBELL SPRINKLER



The new all purpose Campbell Sprinkler designed to operate on a newly patented hydrofoil principle has few moving parts to wear out or get out of adjustment and works easily under 15 to 90 lbs. of pressure. It will cover a circular area 80 ft. in dia. or any part of a circular area can be covered by a simple adjustment and unit can be set to

cover long narrow strips. There is no back splash so adjustments can be made while sprinkler is in operation. Sprinkler head is designed to fit any standard  $\frac{1}{2}$ " pipe or the Campbell "No Rock" T base. Folder available from Campbell Manufacturing Co., 25 South Vinado, Pasadena, Calif.

### SPECIALIZED SOD

Bent Sod for Greens and Tees  
Merion Blue Grass Sod  
Sod of Merion Blue and Mixtures

15 Various Mixtures of Sod for all your needs

All North East Area Supplied

Prices and information on request

George Cameron • Sod Farm  
Pidgeon Hill Road, Huntington, N. Y.

Tel: Huntington 4-3690

## Monroe FOLDING BANQUET TABLES

Direct Prices and  
Discounts to  
Golf Clubs,  
Lodges,  
Parks,



Hotels,  
Churches and  
All Organizations

Manufactured By

WRITE FOR  
CATALOG

THE Monroe COMPANY

12 CHURCH STREET COLFAX, IOWA

### • BENT GRASS •

Stolons and Sod. Washington — CI —  
and other recommended strains.

HIRAM F. GODWIN

22366 Grand River Ave., Detroit 19, Mich.

## ELLIS MAPLES

Pine Brook Country Club  
WINSTON-SALEM, N.C.

Golf Course Architecture & Construction

### BENT C-1 STOLONS

Cultivated in the South to stand the heat.  
GOLF COURSE ARCHITECT & CONSULTANT  
GREEN BUILDING SPECIALIST

A. G. MCKAY

Phone—2862

Box 243, Sevierville, Tenn.

### WILLIAM B. LANGFORD

GOLF COURSE ARCHITECT  
Balanced Topographical Design

Member:

American Society of Golf Course Architects  
Telephone: AUSTIN 7-3371

621 N. Central Ave., Chicago 44, Ill.

### MINIATURE GOLF

For information write to

ARLAND CONSTRUCTION

444 Brooklyn Ave., New Hyde Park, N.Y.

Floral Park 4 2256

## GOLF AWARDS



Featuring  
**Better Value  
Top Quality  
Quicker Service**

Free Delivery on  
Prepaid Orders.

Send for free catalog.

**Sports Awards Co.**  
429 W. Superior St.  
Chicago 10, Ill.  
Phone: **SUperior 7-6034**

### EUGENE F. WOGAN & SONS

GOLF COURSE ARCHITECTS  
AND CONTRACTORS

110 Summer St., Manchester, Mass.  
Phone Manchester 309

Your headquarters for the best  
**HYBRID TURF BERMUDAS**

greens tees fairways  
write

**Southern Turf Nurseries**  
Lakeland, Ga. or Tifton, Ga.  
(all turf Bermudas CERTIFIED)

### TEE MATS LINK MATS RUBBER TEES

Write for Illustration and Prices  
**ASHLAND RUBBER MAT CO.**  
Box 167, Ashland, Ohio

### MINIATURE GOLF

America's Foremost Designers and  
Builders of Outstanding Courses  
**Holmes Cook Miniature Golf Co.**

Office — 631 10th Ave., N. Y. — Plaza 7-3552  
Plant — Long Branch, N. J. — LO. 6-3621-M

1914 *The Original* 1955

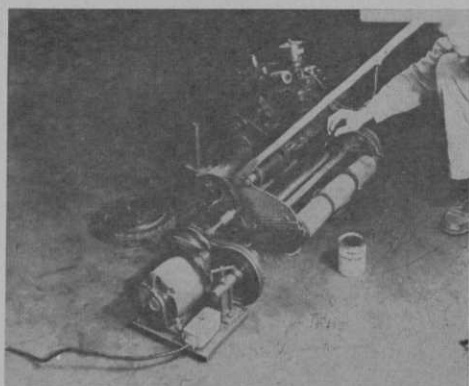
### FULNAME

Golf Ball Machines

DURAMARK DIE—ours exclusively  
Cincinnati 6, Ohio

### SIMPLEX "150" PORTABLE LAPPING MACHINE NEW

A new product, the Simplex "150" portable lawnmower lapping machine, introduced by the Sharpener Div., Fate-Root-Heath Co., Plymouth, O., is designed to recondition any reel-type mower with ease. It can be coupled to either side of



hand, power or gang mowers and gangs need not be unhitched for reconditioning. An adjustable final drive arm permits accurate alignment with the reel shaft of the mower.

The entire unit is portable and may be used on bench or floor in the workshop or carried right out to the job. The only requirement is a nearby source of 110-volt electric power. Simplex Lapping Compound, prepared especially for use with the machine, is now available in "coarse" grit as well as in "fine" and "medium" grits.

### SWINGING AROUND GOLF

(Continued from page 44)

PGA objecting to a calcutta beat a charity out of some money . . . A long, expert sermon on ethics by Bill, with pictures by another veteran merry playmate of ours, George Pietzker, should raise a lot of money for charity.

Marlene Bauer, Alice Bauer Haggie, young Papa Haggie and Pop Dave Bauer making a series of TV shorts with the family angle of golf along with the instruction . . . Allis-Chalmers Co., West Allis, Wis., bought Lincoln Hills CC in Milwaukee dist. as employees' course . . . Lincoln Hills was offered to Milwaukee County but county, notwithstanding pleas of golfers to provide more public facilities, couldn't see the deal.

Mary Lena Faulk, 1953 USGA Women's Amateur champion, turned pro and signed

(Continued on page 141)



# FOR YOUR CONVENIENCE—GOLFDOM'S Buyers' Service

Check off your Needs, tear out and mail this sheet to *Golfdom, 407 S. Dearborn St., Chicago 5, Ill.* You'll get prices and literature direct from the sources of supply.

## Golf Course

- Aerifying equip.: Fairway   
green
- Architects: course  house
- Ball washers
- Ball Washing Compounds
- Bent grass stolons
- Brown-patch preventives
- Compost mixers
- Crabgrass control
- Divot fixer
- Drinking fountains
- Fertilizers Solid  Liquid
- Flags (greens)  Flag poles
- Fungicides
- Generators (gasoline)
- Hole cutters
- Hose
- Humus
- Insect fogging machine
- Insecticides
- Lapping-in machine
- Miniature Course Const'n
- Mowers: putting green   
whirlwind  tee   
fairway  rough  hand
- Mower grinders
- Peat Moss
- Pipe
- Playground equipment
- Putting cups
- Rakes ( worm cast & clean-up)
- Rollers: power  water filled
- Sand (for greens, tees)
- Scythes (motor driven)
- Seed: fairway  green
- Shelter houses
- Sod cutter
- Soil conditioner
- Soil screeners  Soil shredders
- Sprayers: power  hand
- Spreaders, fertilizer,  
seed, topdressing
- Spikers: greens  fairway
- Sprinklers: f'way  green
- Steel curbing
- Swimming pool equipment
- Swimming pool cleanser
- Swimming pool paint
- Thatch removing machine
- Tile-sewer cleaning service
- Tractors
- Trees
- Water systems, fairway
- Weed chemicals

★

## Pro Shop

- Bags: canvas  leather
- Bag carts, for players
- Bag supports
- Bag racks
- Bag Tags—Guest Tags
- Balls: Regular  Range
- Ball markers
- Ball reconditioner
- Ball retriever
- Calks, for shoes
- Caps and hats
- Cars (motor driven)
- Club cleaning machine
- Clubs: Woods  Irons   
Putters
- Club head covers
- Club repair supplies
- Cushion-sole Inserts
- Display equipmt.
- Dressing for grips  bags
- Electric golf cars
- Golf bag covers
- Golf gloves
- Golf Grips: Leather   
Composition
- Golf Practice Devices
- Golf shoes
- Handicap racks  cards
- Mech. Range Ball Retriever
- Name labels, for clubs
- Practice driving nets
- Practice Golf Balls
- Preserver for leather
- Score cards ( ) Charge checks ( )
- Seat attachment, for carts
- Sport seats
- Sportswear: Shirts  Socks   
Sport jackets  Rain jackets   
Windbreakers  Slacks
- Sweaters ( )
- Women's golf dresses   
skirts  blouses
- Tee mats
- Tees (rubber) for driving mats
- Teeing device (automatic)
- Tennis nets
- Trophies

★

## Club House

- Athletes foot preventives
- Bars (portable)
- Bath mats
- Bath slippers
- Deodorants
- Disinfectants
- Floor coverings
- Folding Table (Banquet)
- Link Type Mats
- Lockers
- Massage equipmt.
- Printing
- Runners for aisles
- Rugs
- Showers  Shower mixers
- Shower water control
- Step treads
- Towels: bath  face
- Wash fountains

Send information  
to: Name \_\_\_\_\_

Club  
Title \_\_\_\_\_

Club \_\_\_\_\_ Address \_\_\_\_\_

Town \_\_\_\_\_ Zone (.....) State \_\_\_\_\_

# 29th YEAR OF SERVICE

as golf's clearing-house  
of information on the  
most successful  
operating practices  
and products.

**Make use of it!**

Each month GOLFDOM presents the latest, most practical ideas on golf club administration, management, upkeep and service . . . for time, labor and money-saving guidance of your officials and department heads. Help the *right men* at your club do the *job right*. Send in the form below. Keep them informed on the latest how-to-do-it ideas!

## FILL IN BELOW — MAIL THIS PAGE TO

GOLFDOM, 407 SOUTH DEARBORN STREET, CHICAGO 5, ILLINOIS

Name of club: .....  Private  Semi-Private  Munny  No. of Holes

Address ..... Town: ..... Club Position

Zone ( ) State ..... By .....

President's:  
name ..... (Zone .....

Add: ..... Town: ..... State: .....

Grn. Chmn's:  
name ..... (Zone .....

Add: ..... Town: ..... State: .....

Manager's:  
name ..... (Zone .....

Add: ..... Town: ..... State: .....

Course Superintendent's: (Greenkeeper)  
name ..... (Zone .....

Add: ..... Town: ..... State: .....

Professional's:  
name ..... (Zone .....

Add: ..... Town: ..... State: .....