

# GRANT A. BARNETT

DISTRIBUTOR OF MERCHANDISE TO THE GOLF PROFESSIONAL

brings another *sale scoop* to your pro shop

★

## THE RUGBY LINE

### SWEATERS • TEE SHIRTS

#### SWEATERS

Kasha .....retail \$23.50 V-neck 100% cashmere, pullover  
Orlon .....retail \$ 9.95 V-neck #42 Dupont Orlon  
Colt P.....retail \$10.95 V-neck Blend Nylon-Wool-Cashmere  
Leeds .....retail \$ 5.00 V-neck Sleeveless-Australian Zephyr wool  
Cara .....retail \$ 9.95 V-neck Blend Vicara Nylon

*Shipped in polyethylene bags*

#### 7 TEE SHIRTS

#5207 — Men's combed cotton terry, frost tones .....retail \$2.75  
#5208 — Men's combed cotton terry, deep tones .....retail \$2.75  
#5200 — Men's Orlon mesh shirts.....retail \$4.95  
#5275 — Men's Orlon mesh shirts, ribbed bottom and cuff .....retail \$4.95  
#5209 — Men's combed cotton terry, pastels .....retail \$2.75  
Kay — Orlon inter-locked knit, Swiss embroidery chest pattern .....retail \$6.95  
Klee — Fine Egyptian cotton shirt .....retail \$5.95

*All tee shirts are short sleeved*

## GOLFERS KEEP WARM

The famous cool weather garment that stimulates early spring sales. 8 oz. of action-free comfort that keeps 'em warm and dry. A "plus" in golfing comfort they'll buy in addition to sweaters and windbreakers. Order now—be ready for the "early birds". Small, Medium and Large—

RETAILS AT \$12.00  
Extra-Large, \$1.00 extra.

### FOOTLETS

Now, as national distributors to Golf Professionals, we bring you, in Footlets, one of the biggest selling footwear items. Style 3832 — is 100% nylon Helanca, fits women's sizes 9 thru 11, white. Send for details of our Footlet line for sports and dress.

### GRIP-TITE

The "Tackiest grip" of all in the preferred cake form — in neat plastic container.

Fast mover from display box at 50¢ retail.

Write for literature and prices on all Barnett profit makers.



### RIPON...

a famous name in golf and dress hose for men and women and club head covers . . . now available to pro shops. Write for Pro prices and detailed literature.

**Grant A. Barnett • 707 MAIN STREET, BUFFALO 3, N. Y.**

# Paint Expert Tells Six Points of Pool Saving

By KENNETH SCHILLER

**P**RE-SEASON planning on pool painting often pays big dividends in lowered operating costs. Here are six guideposts that can help you have an attractive, economically maintained pool:

1. Realize that true swimming pool paints are highly specialized coatings. They are designed especially for submersion in swimming pool water. This means they will not become water-logged and deteriorate, but withstand water-treatment chemicals and abrasion. They resist effects of the sun on exposed areas, splashing of water on these areas, and stand up strongly under winter conditions—whether the pool is left empty or full.

Furthermore, those designed for concrete pools will not be burned by the lime found in masonry; those for steel pools will protect properly against rust.

The best pool paints do these things

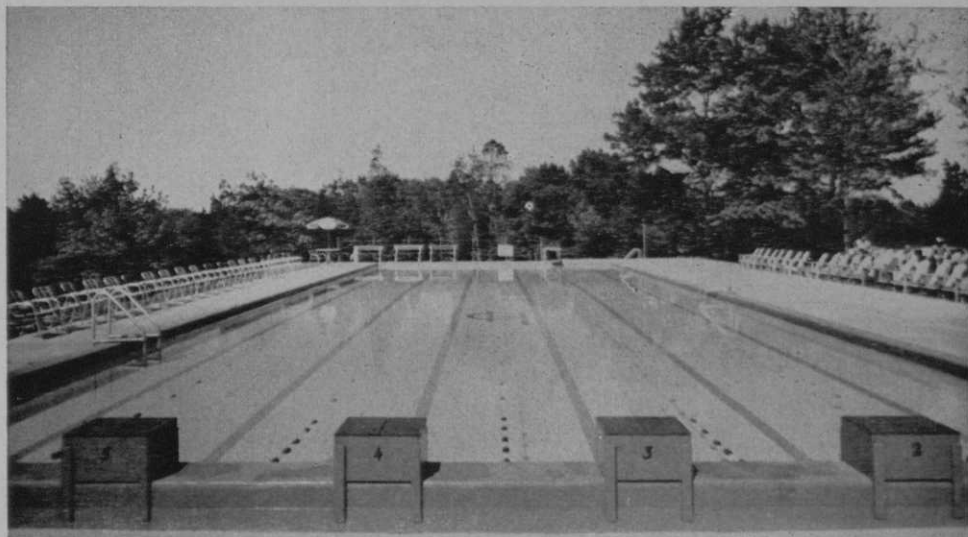
because they are the products of manufacturers who have specialized in the production of such paints for many years.

According to country club managers' and superintendents' experience, the finest of special pool paints are the chlorinated natural-rubber-base type. They hold their colors well and do not peel, blister, flake or crack because of their high resistance to the penetration of pool water.

A well-known pool paint of this type is Ramuc. It is used on country club pools all over the country, including those at Tam-O-Shanter CC, Niles, Ill.; Detroit (Mich.) GC; Montclair (N. J.) GC; Morgantown (W. Va.) G&CC; Shorehaven GC, South Norwalk, Conn.; Cedar Hill CC, Livingston, N. J.; and Lakewood CC, Denver, Colo. Ramuc is produced in chlorinated natural rubber-base grades for both concrete and steel pools and in special



Lakewood CC, Denver Colo., pool is painted with the chlorinated natural-rubber-base type paint Ramuc because it has high resistance to penetration of pool water.



The 110 ft. by 36 ft. pool of the Cedar Hill CC, Livingston, N. J. enjoyed by 225 members and friends is also a Ramuc painted pool.

types to meet unusual conditions.

A valuable handbook, giving considerable practical data on pool painting, protection and maintenance, including complete details on Ramuc, is available to clubs without charge from the Inertol Co., Inc., 480-2 Frelinghuysen Ave., Newark 5, N. J.

2. Keep in mind that the best pool paints stay colorful and retain their gloss far more than one season. Many pools repainted only the second or third year. This makes such paints more economical than cheaper grades which quickly fade, become dull, peel or powder away.

3. An appealing pool, of course, attracts more members. It pays, therefore, to use a paint which will stay attractive. It's a big disappointment to find a pool losing its brightness a few weeks after painting.

4. Do you have a steel or concrete pool? Find out about specialized pool paints for each type before buying. Conditions surrounding the painting of submerged steel are different from those of submerged concrete. Investigating this difference can save your club money.

5. In reference to gloss or flat finishes, there is no question that a smooth, glossy rubber-base finish will do much to make your pool outstanding. But this is not the only advantage of using this type of paint. The gloss finish of chlorinated natural rubber-base paint is far easier to clean than the flat finish. And because dirt and algae are much less inclined to adhere to a rubber-base finish, the pool's surface stays

cleaner longer and hence requires less maintenance.

6. There are special metal coatings designed for other surfaces around your club, such as ladders and diving stands. There are also special steam and mildew-resistant coatings for locker and shower rooms, special protective and decorative coatings for masonry buildings. In addition, there are algaecides for keeping your pool water clear and free of algal deposits — further reducing your maintenance costs.

All these materials, and other coatings designed for specific surfaces, will increase the beauty of your club, make your valuable equipment last longer, and lower upkeep costs. They merit careful investigation and consideration.

### **First Course Clinic Held In Santa Cruz, Calif.**

A two-day Golf Course Planning and Operating Clinic — the first ever held — was presented at the Seventh Annual California Recreation Conference in Santa Cruz, California, on February 14-15, under the joint sponsorship of the National Golf Foundation of Chicago and the California Recreation Commission.

More than 120 community recreation leaders, from the seven state area represented at the Conference, crowded the opening session of the Clinic on Monday, February 14, presided over by chairman Arvid O. Pauly, Superintendent of Recrea-

# FOR PEAK PERFORMANCE

Peerless 600  
Mower Sharpener



The most accurate sharpener ever built! Best for precision grinding of any reel type mower, from the smallest edger to the largest power or fairway mower. No disassembling of mower necessary. Engine, handle, wheels remain in place on the mower during grinding. Equipped with attachment bar for grinding both the face and edge on bed knives. Offered with gravity feed or hand crank for accurate grinding. Adjusts instantly for hook or straight line grinding. Reconditioner provided for lapping-in operations. It's the fast, easy way to keep your mowers sharp. Write for further information.

*Write for our lawnmower repair parts catalog.*

**THE FATE-ROOT-HEATH COMPANY, Dept. G-3P, Plymouth, Ohio**

tion for Sacramento. Rex McMorris, executive vice president of the National Golf Foundation, briefed the audience on the current progress of golf course development in the United States in general and on the situation on the West Coast in particular.

McMorris said that interest in municipal golf course facilities is mounting because, while municipal courses comprise only 15% of the 5147 golf courses in operation today, the municipal layouts bear 40% of the total traffic! He pointed out that, in the overwhelming majority of cases reflecting sound management practices, the municipal course is not only self-supporting but often produces an excess of income over operating costs. This profit is being used in many communities to build and maintain other recreation facilities.

Highlight of the opening session was the showing of the recently produced Golf Foundation color slidefilm "Community Planning Gets a Golf Course," followed by the presentation of case histories of community golf course development in California, by representatives of the communities involved. These case histories outlined the various methods used in suc-

cessfully financing, promoting and operating recently opened municipal golf facilities. Representatives and the communities on which they reported included: William Miller of Palo Alto, Dr. Cecil B. Hollingsworth of Alondra Park (near Los Angeles), and George Mifflin and Herman Reice of Kern County.

The second half of the first session was devoted to the problems and considerations involved in actually building the golf course. Speaker William F. Bell, secretary of the American Society of Golf Architects, outlined the various requirements for a golf course-land area, water, use of natural features, etc. Charles G. Wilson, Western Director for the United States Golf Association Green Section, discussed turf development and maintenance in detail.

The Pasatiempo Golf Club near Santa Cruz, operated by Sam Nigh with the aid of golf professional Tony Videtta, played host to the second session of the Golf Course Clinic on Tuesday morning, February 15. The course itself, well-groomed for the occasion under supervision of superintendent James Babino, was thrown open to conference members in the afternoon for a friendly tournament.

# Cut Sharpening Costs!

with a New SIMPLEX "150"

Simplex "150," the newest portable lapping machine, reconditions any hand, power, or gang reel-type mower with lapping compound . . . keeps mowers in top condition between sharpening jobs. Couples to either side of mower; gang mowers need not be unhitched. Weighs only 30 pounds — easily carried right to the job. G-E 1/4 hp motor with reversing switch for quiet, dependable operation. Besides its money-saving performance, the new Simplex "150" is . . .

• LIGHTER

• MORE COMPACT

• LOWER PRICED

The FATE - ROOT - HEATH  
Company

Dept. G-35, Plymouth, Ohio



\$65<sup>00</sup>

COMPLETE

with 1/4 h.p. motor  
and reversing switch

Write today for  
FREE Folder

Montebello Golf Course manager Keith Jacobs acted as chairman of the Tuesday meeting which featured Verne Wickham, Los Angeles County Golf Director; George Lake, former president of the Southern California PGA and an officer of the national PGA, and Tommy LoPresti of Sacramento, California.

Wickham gave a slide illustrated talk on the man-hour needs of golf course maintenance, including organization charts of 10 cities, comprehensively covering the groundskeeping side of municipal golf course operation.

Lake and LoPresti spoke on pro shop operations and concessions and listed the reasons why an experienced golf professional is a valuable asset to any golf operation. All sessions were thrown open to animated discussion and questions at the conclusion of the programmed talks.

Rex McMorris of the National Golf Foundation expressed satisfaction with the results of the golf clinic. He said:

"We achieved two basic objectives. We have a better picture of golf course de-

velopment on the West Coast which will enable us to more effectively help the communities striving to obtain municipal golf facilities in this area and, recreation leaders here now have a better understanding of what the Golf Foundation can do to help them with their golf problems, through its services and other aids."

McMorris added that the enthusiastic response to the clinic and the interest aroused in golf course development suggests the possibility of staging similar golf clinics in other regions. He said the California clinic pointed up the wide interest in golf facilities among municipal recreation leaders and served to underline the facets of municipal golf which are of prime concern to community recreation planners and operators.

Conference officials expressed surprise and gratification at the wealth of technical information and data exhibited by the National Golf Foundation during the clinic and indicated that a repetition of the Golf Clinic at future conferences would be a significant and welcome addition to the annual program.

# SUCCESSFUL POOLS STAY BEAUTIFUL WITH

## RAMUC® POOL PAINT

More than 11,000 successful pools all over the world are now protected and beautified with RAMUC paint. RAMUC is a natural rubber-based enamel made especially for swimming pools. It gives your pool a satiny-smooth finish, just like tile... won't powder, blister or flake off... discourages algae-cling... easy to keep clean. RAMUC is available in twelve sparkling colors. All colors stay bright and true. Most important: RAMUC is made to last longer—to keep your pool attractive and inviting for seasons. Get all the information on amazing, economical RAMUC.

**EXALGAE®** keeps water clear all summer

- Destroys algae-cling and slime fast
- Prevents further plant growth
- Colorless, odorless, non-poisonous
- Harmless to skin and eyes
- Helps prevent slippery pool bottom

Learn more about economical pool maintenance. Today, send for our free "Swimming Pool Handbook."



## INERTOL CO., INC.

479 Frelinghuysen Ave., Newark 5, New Jersey  
27F South Park, San Francisco 7, California

INERTOL PROTECTION MEANS LOWER COST PER YEAR

*positive*

## INSECT CONTROL!



## GET A **Dyna-Fog Jr.**

• This potentially effective insecticidal fog generator will make short work of insects on golf courses, driving ranges and in clubhouses.

**\$259.50** F.O.B. BEDFORD, IND.

• WT. 15 LBS. • SIMPLE TO USE • ADJUSTABLE FOG PARTICLE SIZE • ECONOMICAL

WRITE FOR MORE INFORMATION



**AUTOMOTIVE  
DEVICES, INC.**

P.O. Box 232-D  
BEDFORD,  
INDIANA

Dyna Products Division

## PGA Seniors Biggest Event Won by Mortie Dutra

**M**ORTIE Dutra's 213 was good for \$1000, a trip to Britain to meet the British PGA senior champion, and the Teacher's trophy, after 54 holes of the 16th PGA Seniors' championship.

Mortie with his 70, 71, 72 was getting older as the tournament aged but he was steady and strong enough to finish 4 strokes ahead of the defending champion, Gene Sarazen, and Denny Shute and Mike Murra, who tied for second. Louis Chiapetta was alone in third spot at 218 and Harry Cooper and Jock Willoweit tied for 4th at 221.

Dutra beat Murra and Chiapetta in a play-off for the Bourne trophy, the 36-hole PGA award, after the ancient but proficient gentlemen had tied at 141.

The winners in the various age groups, and their scores: 50-54, Jules Blanton, 143—55-59, Louis Chiapetta, 141—60-64, Charles Lorms, 147—65-69, E. W. Harbert, 154—70-74, Jock Hutchison, 159—75-79, Wm. Lock, 90—'0 and over, Bertie Way.

The field of 162 drew a good gallery and saw some grand golf with Mike Murra's 66 nearly perfect at any age.

Sarazen finished strongest with a 71 but the calm Castilian, Dutra, just kept doing a good solid journeyman's job.

Dutra's victory was the first big one he's won. He was highly promising when he was younger but just couldn't hold together in the stretches and was far out-performed by his brother Olin, winner of National Open and PGA championships.

Some years past Mortie was desperately ill for months and it seemed as though he'd be permanently out of golf. His comeback really qualifies as the come-back of the year. Not many have been any nearer to holing out in a box than the quiet and pleasant Mortie was.

This PGA Seniors' championship deserves a whole lot more national news coverage than it gets. In no other sport are veteran performers so competent. With the nation-wide large and growing keen interest in amateur and pro senior golf, the PGA exhibition of former top national champions is unique. In the field at Dunedin were Fred McLeod, Jock Hutchison, Willie Hunter, Billy Burke, Denny Shute and Gene Sarazen, accounting for a hefty number of US Open, British Open and PGA championships.

# SAF-T-KLENZ

**KEEPS  
SHOWERS  
AND POOLS  
SPARKLING  
CLEAN**

*An Easy Way!*



Removes lime deposits, algae formations, body grease and soap oil even where hard scrubbing with other cleaners failed. The most formidable stains and rust disappear like magic. Simply sprinkle a little Saf-T-Klenz powder on the damp surface, mop lightly, and rinse with clear water. Minimizes conditions that breed and spread infectious germs. Leaves floors and decks practically slip-proof. Odorless, it doesn't mask odors—it removes the cause. Harmless to hands, clothing, floors and drains. Safe to use on glass, porcelain, china, marble, tile, terrazzo, vitreous and concrete surfaces. Porcelain drinking fountains, wash bowls, toilets, and urinals are similarly cleaned with little effort. Ideal for brass, bronze or copper. Sold with a positive guarantee of satisfaction or cancellation of invoice. It is not even necessary to return the unused portion. Write for free sample, folder and prices today.

## BERMAN CHEMICAL COMPANY

769 Superior Street

Toledo 4, Ohio

**This  
can't happen  
at clubs with**

# POWERS

**Thermostatic  
SHOWER  
REGULATORS**



"HE SAYS HE'S GOING TO PLAY IT SAFE OUT HERE UNTIL THEY INSTALL POWERS TEMPERATURE REGULATORS ON THE SHOWERS!"

**Stop Shower Complaints**—Keep your club members happy, comfortable, safe—banish "booby trap showers." Have your plumber install POWERS Thermostatic WATER MIXERS. They always keep the water temperature where the bather wants it. No unexpected shots of hot or cold water. No waste of time or water. Phone your plumber today for a quotation on installing Powers Mixers. They are tops for comfort, safety and economy.

Offices in Over 60 Cities, See Your phone book.

THE POWERS REGULATOR CO., Skokie, Illinois • Over 60 Years of Temperature Control.

March, 1955

117

# Make Top-Soil Out of Sub-Soil

by working in

## ***Hyper-Humus***

### NATURE CURED PEAT

#### The Organic Soil Vitalizer

Superintendents everywhere are enthusiastic over this new and better way to build a fine golf course.

Let us show you how raw sub-soil can be converted into new top-soil for much less than the cost of hauled-in topsoil, and the new topsoil will have just the right organic content, free from weed seeds, insect larvae and disease spores.

Write for Special Top-Soil Bulletin and address of nearest Hyper-Humus dealer

**HYPER-HUMUS CO.**

BOX G

NEWTON, N. J.

### Chandler Harper Grows As Golf Businessman

**C**HANDLER HARPER, the quiet, lean, Virginian who won the 1950 PGA championship, took another big step forward as one of pro golf's big businessmen, when he began construction of an 18-hole semi-private course in his home town of Portsmouth, Va.

Harper, after one council vote edged him out, had the council's second vote unanimously in favor of the course and clubhouse deal on which he, without any partners or stockholders, will spend about \$150,000. Harper's other business interests include presidency of the Professional Golf Co., and a substantial interest in a finance corporation.

The Portsmouth property (138 acres) is leased from the city at an annual rental of \$3800. After 25 years the entire property and its improvements will revert to the city of Portsmouth.

Fred Findlay of Charlottesville, Va. is the architect of Harper's course which will be known as the Bide-A-Wee GC. Russell Breeden of Charlottesville is assisting Findlay with construction of the course and will become its supt. when the course is opened this fall. The course normally will play about 6500 yds. and from the back tees can be stretched to about 7100 yds.

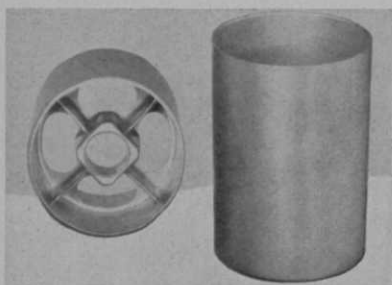
### SQUIRE SLACKS DEMAND IS UP

Jack Lust, sales mgr. of Squire Slacks, 18 W. 20th St., N. Y., reports production plans which will enable his custom slack company to expand and accelerate service to their fast growing golf professional accounts. The Squire 1955 selection includes the newest in slack fabrics along with the pro shop favorites of the past year, all of fine custom tailoring. Jack's brother, Eddie Lust, will arrive in late March to headquarter in Chicago from where he will contact Chicago District and Illinois professionals.

Walter Hagen Golf Co. div. of Wilson, Grand Rapids, Mich., has its 1955 catalog of pro-only clubs, balls, bags, in the mails. Pros who don't receive a copy will get one by writing Ed Rankin, gen. mgr. of the Hagen company.

Mock Seed Co., Pittsburgh 30, Pa. has a summary of cultural information on Merion bluegrass that's something golf course superintendents will find interesting and authoritative. It will be sent free on request.

## TRU-CIZE HOLE CUP



### TRU-CIZE HOLE CUPS Are Best Because:

1. Made by the new "Precise Die Cast" method, accurate to a few thousandths/inch.
2. Made of 99% pure zinc — rust proof.
3. 25% lighter than cast iron cups, with three times the tensile strength of cast iron.
4. Years of use on hundreds of golf courses have proven their superiority.
5. They comply with USGA Rules and Measurements. Cup tapered  $\frac{1}{8}$  in.
6. Built with particular attention to high quality; stronger pole sockets; drainage and smoothness, inside and out.

Write us for name of your nearest dealer.

Manufactured By:

**GOLF & TRACTOR EQUIPMENT CORP.**

P. O. Box 55, Elmwood Station, Syracuse 7, N. Y.



**CLEARY BUILDING PAR-3  
COURSE AT FACTORY**

W. A. Cleary Corp., New Brunswick, N. J., makers of PMAS, Caddy, and Spotrete, is building a par-3 course and practice range on acreage adjacent to the company's plant and turf nurseries.

The golf layout will be available to the public on a fee basis. It also makes a very practical test area of the various strains of Cleary sod and the company's fungicides, under heavy play conditions.

Leo Cleary, sales mgr. of the company, says opening day of the course and range tentatively is set for May 30.

**SPALDING RESUMES PUBLICATION  
OF "SPORTSMAN"**

A. G. Spalding & Bros., Inc., have resumed publication of their interesting magazine for employees and customers.

The current issue, first of 4 to be issued this year, contains a story by Francis Ouimet on playing in as captain of the R&A, one on Jerry Barber and another on "How the Golf Ball Got Its Dimples." It also has, among other features, a picture of Jimmy Thomson's outfit for chasing wild drives into thickets. The outfit consists of a Spalding football helmet and Spalding football shoulder pads.

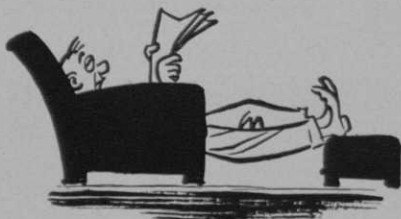
*New! Improved*  
**WESTALL**  
**RUBBER FLOORING**

*Lower Priced!*

We are pleased to announce this new rubber flooring now being offered in plain and embossed surfaces in choice of red, green, or sand colors. Write or wire for samples and information.

- PROTECTS CLUBHOUSE FLOORS FOR YEARS!
- LONGER-WEARING, TOUGH, FIRM!
- SO SMOOTH, SAFE AND EASY TO CLEAN!
- DOES NOT BUCKLE, STRETCH OR CRAWL!
- COMES IN ROLLS UP TO 24 ft. LENGTHS, 5/16" THICK AND 36" to 48" WIDTHS.

**HENRY WESTALL COMPANY**  
944-960 Merrimon Ave., Asheville, N. C.



**THE FAMOUS 3-FORE-1 CART**

Bag, cart and seat in one complete unit. 12" ball bearing wheels on adjustable axles for perfect balance.

Roomy bag has 14 club pockets, ball and accessory pockets and umbrella holder. Colors: green, blue, red. Seat will support the heaviest golfer. Cart folds compactly.

STANDARD  
MODEL  
\$39.50

DELUXE  
MODEL  
\$44.50

**ALSO BY LUMEX:**

**GOLF CART SEAT.** Easily attached to any center post cart. \$12.50

**QUICK SEAT.** Automatic Tripod type folding seat, aluminum legs. \$8.95

**RENTAL CART.** Steel construction for minimum maintenance.

Pro Price \$12.50  
Write for Full  
Information

Now — "Easy-Chair" Golf  
with the New

**LUMEX "E-Z CART"**

FITS ALL BAGS • ROLLS EASY  
FOLDS EASY • SEATS EASY

**E-Z CART**

Attractive new folding golf cart with built-in seat. Lightweight aluminum alloy construction. 12" ball bearing, semi-pneumatic tired wheels. Axle width adjustable for stability. Handle adjustable for balance. Folds compactly. Comfortable seat of heavy duty red and ivory Saran webbing, opens to position as cart is set up.



\$29.50

**LUMEX, INC.**

**11 CLEVELAND STREET  
VALLEY STREAM, N. Y.**

## NEW "QUIKY" CLUB WASHER GETTING LIVELY CALL FROM DEALERS

Sports & Games Co., 3111 S. Racine Ave., Chicago 8, Ill., reports orders for their "Quiky" Club washer arriving from golf course supply dealers in every section of the U. S. The "Quiky", introduced at the recent GCSA annual conference in St. Louis, is a compact unit, placed conveniently on the tees for easy cleaning of club heads by player or caddie. Cleaning slots are provided for both woods and irons, right and left handed clubs. Quickly removes mud, grass, etc., without injury to club surface. Details featured by the makers include compactness, durability, ease of use and maintenance, and simplicity and economy of brush replacements. Complete information, prices and dealer accessibility from the manufacturers.

## FRANK SPRINGER NOW COVERING NORTHEAST PRO TRADE

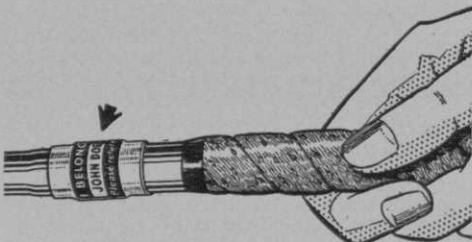
Frank Springer, who has been covering southeastern pro territory for Golfcraft, Hotze bags and Country Club sportswear, now is covering pro trade in New Eng-

land, N. Y. state and New Jersey.

Springer's headquarters are at 488 Maywood ave., Maywood, N. J.

## NAME LABELS FOR PROTECTION

Players are going for the pros' suggestion that 75¢ is little enough to spend for protection against loss or mix-up of their clubs, judging from the early spring orders for Wether-Pruf Name Labels.



Pros like the idea too for it helps eliminate mix-ups that occur during club cleaning on big load days. The labels come 15 to a kit, are simple to stick on, and they stay stuck. Details from S-C Products, Inc., 395 St. Ronan St., New Haven, Conn.

# NIGHT CRAWLER

POWER DRIVEN  
POWER TRACTION

## GREEN AERIFYING MACHINE FAST CLEAN-PLUG VERTICAL TINE ACTION

- PATENTED NO-TEARING ACTION
- NO LOSS OF PLAYING TIME
- NO DAMAGE TO PUTTING SURFACE

The Power Driven Vertical Tine Action produces fast, clean-plug aerifying results, allowing free introduction of air, water and fertilizer. Only the NIGHT CRAWLER has this patented no-tearing action.

The NIGHT CRAWLER is Self-Driven for transporting between greens. More holes per square foot, 18 greens can be completely hollow-tined in two days without extra help.

Works turf improvement wonders wherever it is used. Write for the name of the Night Crawler dealer nearest you.

*Two and Three Section Rollers are now available for early spring delivery*



**BERRIEN TOOL & DIE CO.** Eau Claire, Michigan

DIVISION OF SOUTH BEND SCREW PRODUCTS, INC., SOUTH BEND, IND.