

12-MONTHS COURSE CARE

(Continued from page 68)

mainly to prevent their spreading into the turf grass areas.

Tee Care Outlined

Tees are given last consideration, not because they aren't important but because of the fact that the golfer has the privilege of teeing his ball up to a good lie instead of trusting to luck as he does when it comes to rest on the fairway, in the rough or on the green.

Grass on the tees receives terrific wear. It is more pleasant to play off of grass than bare soil and because of the first impression that a person gets when he walks up to the tee tees should be large enough to take care of the wear, especially on par 3 holes. Grass should be the toughest and most aggressive available so that it will stand the wear better and heal faster.

Tee markers should be moved as often as play demands in order to spread the wear and change the play of the hole, making sure the markers are properly lined up. Divots should be repaired often so they will heal over while other parts of the tee are being used.

Fertilizer and water should be applied about the same as it is on the greens to assure good growth. Lime requirements should be determined by tests, and weeds and insects should be controlled. Aerifying and topsoiling are good practices when needed, and growth will determine mowing which fairway mowers should be able to do.

Each tee should be provided with a ball washer and towel, a trash container and at least one bench—two would be better, while the first tee and par 3 tees could use three or more.

All course equipment should be kept in good repair and appearance. This means painting too and don't spare the paint. Bright colors are very attractive and should be used where appropriate. Most things will need painting twice a year and some things such as flag poles, tee markers and ball washers possibly three times. Flags should be replaced as needed—two or three times a year. Ball washers should be kept clean, inside and out, filled with water to which a little soap is added and clean towels provided. Benches need to be moved with the tee markers and trash containers emptied regularly.

More Grass Hazards

I thought of leaving hazards out because that's where most golfers would like them. But since they are present they have to be maintained. The most common hazard is the sand trap and since they require such a large amount of hand labor, it would be more economical to substitute grass hazards for them wherever possible or practical. So many sand traps are misplaced anyhow and instead of handicapping the good golfer, they catch the poor golfer who is already at a disadvantage and can create more hazards for himself than you ever thought possible. Most of you have no doubt seen some poor golfer take two or three strokes trying to hit a ball out of a trap and when it finally comes out it goes sailing clear over the green and possibly into another trap where he may repeat the process. It may look very funny to some, but you may be sure that golfer isn't having a good time.

If he's out for exercise, he's really getting it, but not too much fun and relaxation. A good grass hazard would usually penalize him at least a stroke which is

NEW GOLF COURSES OPENED FOR PLAY IN 1954

Paradise Valley CC, Phoenix, Arizona	18	P	2/54
Bakersfield (Calif.) Public GC	9	SP	2/1/54
Irvine Coast CC, Newport Beach, Calif.	18	P	2/15/54
Jaycee GC, Julesburg, Colorado	9	SP	4/54
Lincoln Homestead St. Park C., Springfield, Ky.	9	M	4/1/54
Currie Municipal GC, Midland, Mich.	9	M	4/23/54
Warsaw Cedar Hills GC, Warsaw, Missouri	9	M	5/2/54
Ruby View GC, Elko, Nevada	9	M	5/1/54
North Syracuse GC, Brewerton, N. Y.	18	SP	5/18/54
Ohio University GC, Athens, Ohio	9	S	4/21/54
National Cash Register Co. GC, Dayton, Ohio	36	I	5/30/54
Bon Air CC, Glen Rock, Pa.	9	SP	5/29/54
Lakeview CC, Morgantown, W. Va.	9	P	5/1/54
Hickory Hills East Course, Chicago Dist.	18	SP	5/15/54

P—Private; SP—Semi-Private; M—Municipal; S—School; I—Industrial.

enough, and some costly maintenance would be eliminated.

Where sand traps are used, they should contain enough loose sand to prevent a player's club from hitting hard soil underneath, and it should be kept at a uniform depth. All foreign matter needs to be kept out as well as any weeds or grass which can be controlled chemically. Tracks need to be raked smooth, and after each rain the traps should be raked all over.

Water hazards should be kept in good appearance and the edges clearly defined, making sure all the wet areas are included or it will be considered as casual water. "Out of Bounds" should be marked clearly so there will be no chance for argument.

Paper should be kept cleaned up at all times, as well as other debris such as leaves, straw, bottles, cans and the like. Appropriate signs placed at strategic locations will help to remind players of their responsibilities; such as, "replace divots," "let faster players through," "no 5-ball matches," "prevent fires," etc. It is standard practice at every good course to have on each tee a marker giving the hole number, yardage and par.

No course can be properly maintained without the specialized machinery designed for each particular job. Suffice it to say that it is all expensive and it usually pays to buy the best, then to give it the proper attention for good service and long life. This requires care on the part of the operators and a good mechanic to service and repair it.

Transition Period Problems

As if the foregoing things weren't enough to keep a supt. and his crew busy for 12 months, there is another problem that most of them throughout the South have to face — not once but twice a year. It is called the transition period.

In the fall it is from Bermuda to rye or some other winter grass, and in the spring it is from rye to Bermuda. The fall transition is usually accomplished without too much difficulty, but the spring transition is another story. No one seems to have found the perfect solution yet. Both periods have been covered thoroughly in previous meetings and golf publications, so I won't go into detail, but this is a major maintenance problem at many courses.

Bentgrass for greens is finding increased favor in many sections of the South. This success, together with the many improved and superior strains available, should warrant the establishment of a test plot by each supt. who wants better greens the

year round. This is probably the solution to the transition problem. A grass that will grow the year round; neither Bermuda or rye will do this. We all know of the great strides that have been made in the development of fine Bermudas in recent years and our hats are off to those responsible. They have filled a great need, but even with their use the transition problem still persists because Bermuda is dormant in winter.

Is bentgrass the answer or is there another suitable grass that will grow and can be used for 12 months? We can all assist in finding the solution.

Maintaining a course economically, in general requires the hiring of a good labor force that will give an honest day's work, close supervision of all operations to see that they are done right and efficiently, study of the movements of both men and machines to make every move count, careful purchasing of supplies, equipment and machinery, elimination of unnecessary operations, and substituting power for hand labor where the job can be done better or at less cost.

Among the great savers that should be essential on a golf course are a flat bed hydraulic dump truck and a tractor with loader and other attachments. All soil can



"Hermie" Wins His First in Big Time

Herman Scharlau, after years as a club pro and 18 years as asst. to Tommy Armour at Boca Raton, Fla., in the winter, made his debut as a tournament circuit winner at the Greenbrier Open. After a 3-way tie Scharlau defeated Jackie Burke and Sam Snead in a sudden-death playoff. Jackie went out on the second extra hole, and Snead fell to Hermie's birdie on the 220 yd. third. L to R: Mike Homa, Rye (N. Y.) pro and Redmond Stewart, Baltimore, Md., winners of the program; Chris Dunphy who's giving the \$2000 check to Scharlau.

FOR PEAK PERFORMANCE

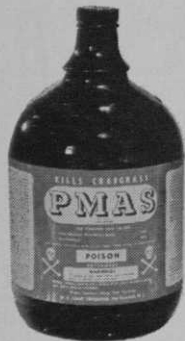
Peerless 600 Mower Sharpener



The most accurate sharpener ever built! Best for precision grinding of any reel type mower, from the smallest edger to the largest power or fairway mower. No disassembling of mower necessary. Engine, handle, wheels remain in place on the mower during grinding. Equipped with attachment bar for grinding both the face and edge on bed knives. Offered with gravity feed or hand crank for accurate grinding. Adjusts instantly for hook or straight line grinding. Reconditioner provided for lapping-in operations. It's the fast, easy way to keep your mowers sharp. Write for further information.

Write for our lawnmower repair parts catalog.

THE FATE-ROOT-HEATH COMPANY Dept. G-6 Plymouth Ohio



*A
Constant
Need*

•
**WEEKLY
APPLICATIONS
OF**

P.M.A.S.

**The Proven
HERBICIDE-FUNGICIDE**

Apply Early

for complete KILL of

CRABGRASS

■ be loaded, hauled, dumped and scattered, if
■ need be, by one man using this equipment.
■ For screening soil, there is a stationary,
■ vibrating screen that can be mounted so
■ the truck can back under it. The tractor
■ then loads soil into the screen and it falls
■ into the truck bed ready for use. This saves
■ many hours of hand labor.

■ Lapping-in mowers with emery dust is
■ another expensive operation both in labor
■ and machinery. This can be virtually elimi-
■ nated for power mowers by filing the front
■ edge of the bed knife to a sharp edge and
■ keeping it tightened up to the reel while
■ mowing. The same will work on hand mow-
■ ers to a lesser degree.

■ When seeding or fertilizing with cyclone
■ seeders, one man is usually needed to fill
■ the seeders. He can be eliminated by rig-
■ ging up a barrel with a chute at the bottom
■ on one side where each man can fill his own
■ seeder. A gate is needed on the chute to shut
■ it off, and the barrel needs a false bottom
■ that slopes toward the chute opening.

■ Using alcohol in ball washers to keep the
■ water from freezing is less expensive than
■ having them emptied and refilled each day.

NOW! REEL SPRINKLER AUTOMATICALLY SOLVES



Very compact—only 16½"x22"
Handles up to 200' plastic hose

★ If your dealer can't supply you, write direct for
FREE catalog and order blank.

Your Lawn Irrigation Problems

- NOTHING TO PICK UP, WIND UP,
• CARRY or SHUT-OFF!*
- Covers Up To 14,000 Sq. Ft.
- At last . . . a completely practical low-cost traveling irrigator for bringing controlled "rainfall" where you want it, when you need it! Automatically irrigates large or small lawns . . . soaking roots to promote growth of lush, green grass all season long. Does the complete job while you're away . . . day or night! Turn on and forget. Covers area up to 70 ft. wide by 200 ft. long. All metal construction for years of dependable, effortless performance. Fully guaranteed. For less than \$50.00 you can own a modern new Reel Sprinkler—most for your money . . . and your water! Order yours today. Immediate delivery.
- ★ Travels Course You Set ★ Conserves Water
- ★ Winds Up Hose As It Irrigates
- ★ Returns To Valve For Automatic Shut-Off
- *Shut-off valve optional

REEL SPRINKLER COMPANY

1820 N. Westwood Ave'
Toledo 7, Ohio

GOOD GREENS AND TEES ALL SEASON

Experts all over the country are finding green and tee troubles stem from hard packing.

Bent roots must have oxygen and they can't get it thru a hard, fine packed top layer.

The answer is the use of a uniform coarse sand that is clean and free from hard packing fines. Spike tooth the green, clean, apply uniform coarse sand and drag.

We'll ship anywhere — bagged or bulk

NORTHERN GRAVEL COMPANY

407 East Front St.

Muscataine, Iowa

celerated under the administrations of retiring pres. Hudson G. Samson of the association.

Hudson was lauded as having brought the organization to great practical service to member clubs and their members. Jerome Wolk was elected to succeed Samson who has served three terms.

Herb Graffis, GOLFDOM editor, spoke before the merry gathering, on the triumphs of the ordinary golfer, among which he rated caddies such as Western Penn presented that evening as the highest.

Chick Evans' Golf Book for Juniors Out Soon

"Golf for Boys and Girls" by Chick Evans will be published June 25 by Windsor Press, 200 E. Ontario, Chicago. The book is an instructive and entertaining, well illustrated job of 112 pages.

It gives a lively presentation of playing technique to give the kids basic training, goes into advice on playing courses, caddying and all angles of junior golf, making a practical follow-thru to the pro work in junior promotion.

It will retail for \$3.50. Customary discounts are offered to pros to encourage use of the book as a junior prize and as general promotion of junior golf.

SWINGING AROUND GOLF

(Continued from page 28)

points for position in 15 or more tournaments a year . . . Says pro golf should have something like baseball's "most valuable player" annual awards.

Carolina PGA discussing "Most Valuable Home Club Pro" annual award . . . A beautiful idea but after GOLFDOM 15 years ago tried to determine on what basis such an award could be made we had to give it up . . . We quickly discovered at least 50 who could have tied for the award . . . And we didn't get all around the country in consulting club officials, private and pay-play course players, pros and golf writers.

"Pars, Birdies and Eagles," pioneer television program now in its 7th consecutive year in Chicago . . . Sponsored by Joe Jemsek and Charley Nash . . . Half hour weekly thru golf season . . . Johnny Revolta the "regular" on the program this year . . . Always guest stars . . . Big mail draw and fine business producers for Nash and Jemsek "Quality Group" courses.

Larry Robinson in NY World-Telegram Sun notes that Richmond County CC and North Hills CC are the only two private courses within New York City limits . . . Richmond County CC altering course to eliminate two holes on far side of a busy road.

Partial round-up of new course activity during past few weeks:

Service clubs in Russellville, Ala., present council with plan to finance and build 9-hole munny course . . . Architect Lawrence Hughes drawing plans for Santa Barbara, Calif. munny 18 . . . Architect Bob Baldock working on plans for Inter City GC near Selma, Calif. . . . pre-payment of greens fees financing Table Mountain GC course to be built at Oroville, Calif. airport.

Reviving golf club at Geneva, Neb. . . . Talk about constructing another course near Camden, N. J. . . . City Mgr. Harmon Bennett proposes new munny course at Burbank, Calif. . . . Highland GC, near Highland Light, Mass., 9-hole course, abandoned several years ago, restored and reopened by Hal Conklin.

Boylston Realty Co. has raised \$250,000 toward building course and clubhouse in Boylston, Mass., or Sterling, Mass. . . . Lakeview CC, 9-hole course, opened on Cheat Lake 10 miles from Morgantown, W. Va. . . . Rock Hill (S. C.) CC newly-organized; will build soon . . . Work begun on \$125,000 munny course at Crown City Ranch, Alhambra, Cal. . . . Hoberg's in Lake County, Cal., expects to open 9-hole course this summer.

Green River (Wyo.) building 9-hole course . . . 9-hole course for Negro play opened at Selden Park, Brunswick, Ga. . . . Lancaster, Cal., to build course near Palm-dale airport . . . Expect to spend \$500,000 for 18-hole course and clubhouse between Grass Valley and Marysville, Cal. . . . Plans approved for construction of another 18-hole munny course adjoining Alameda, Cal. present munny course; estimated cost \$503,-750 without clubhouse.

Expect to have 9-hole course at University of Maryland within a year . . . Houston (Mo.) GC on airport grounds opened . . . Pawnee (Okla.) revives golf course after 23 year shutdown . . . Opening first 9 of South Hills CC, Covina, Cal. . . . Constructing 2d 9 and clubhouse.

North Fork Golf Assn. to build 9-hole course at Ulysses, Ks. . . . Selma, Cal., beginning construction of 9-hole course; plan to increase to 18 later . . . Push plans to

build 9-hole course at Magnolia, Mass. . . . Construction under way on Bethlehem, Pa., 18-hole munny course . . . Sunny Hills semi-public course at Sunbury, Pa., adding 9 holes to its present 9.

Part of old Meadowbrook course may be acquired for NY state park course . . . Building Crestview GC at Muncie, Ind. . . . Roy Byrd is owner, pro and mgr. . . . Open Bolivar (Mo.) GC 9-hole sand green course . . . Edina, Mo., building 9-hole course . . . Work to start next month on Palo Alto \$217,500 munny course . . . Wm. F. Bell is architect.

North Kern Golf Assn. proposes 9-hole course at Bakersfield, Cal., near Poso airport . . . Bill McGowman, Santa Rosa (Cal.) Democrat sports columnist, campaigning for munny course at Santa Rosa . . . Expect to open 9-hole semi-public course 4 miles from Tappahannock, Va., in July . . . Lake Chelan GC, Chelan, Wash., being constructed with members being allowed to work out part of \$100 initiation fee at \$1 an hour.

Syndicate buys 135 acre Balsan estate near Oyster Bay, N. Y., and will build course . . . Al Mitchell to design course . . . Mission Bay Park Commission ap-

PROFESSIONALS!



Increase your earnings!
Regrip all clubs
with...

*Finest "Feel"
in Golf*

Flange Wrap Grips

Obtain from your distributor

C.S.I. Sales Company

Solon Center Bldg. • Solon, Ohio
Exec. Office: 536 Terminal Tower, Cleveland 13, Ohio

GET GREATER TRACTION!



CHAMP
SELF LOCKING
GOLF SPIKES

EXCLUSIVE!



YOU CAN'T BREAK 'EM APART!

ARE YOUR SPIKES MARKED Hardened Steel?

THEN THEY'RE **CHAMPS** THE PROVEN SPIKE!

20,000,000 NOW IN USE!

CHAMPS OUTSELL ALL OTHERS 2 to 1

MACNEILL ENGINEERING CO. • WALTHAM, MASS.

EUGENE "SKIP" WOGAN
GOLF COURSE ARCHITECT

Design, Supervision and Construction

110 Summer St. Manchester, Mass.
Phone Manchester 309

WILLIAM B. LANGFORD
GOLF COURSE ARCHITECT
Balanced Topographical Design

Member:
American Society of Golf Course Architects
Telephone: AUstin 7-3371
621 N. Central Ave., Chicago 44, Ill.

CHANGES IN OPERATING PERSONNEL?
SEE PAGE 102

proves lease for building 9-hole course at Mission Bay Park, San Diego, Cal. . . . Pendleton, Ore., Jaycees propose building of 9-hole course at cost of \$40,000 . . . Work begun on first 9 of Richland, Ore.

Robert Trent Jones designing 18 for Coral Ridge CC of Coral Ridge Properties at Ft. Lauderdale, Fla. . . . Midland, Mich., opens 1st 9 of new many course on land given to city by Dow Foundation . . . Second 9 to be opened in midsummer . . . Gilbert A. Currie, Sr., gives Midland \$37,500 for many course clubhouse . . . Gainesville, Ga., to build new course as planned Buford dam will put present course under water.

Baltusrol will measure 7,060 for the National Open . . . Par will be 70 . . . Robert Trent Jones designed new tees for the 3d, 4th, 6th, 16th and 17th holes of Baltusrol's Lower course . . . Tees on the 14th, 15th and 18th holes were extended . . . Three of the par 4 holes are the 1st (470 yds.), and 6th (470 yds.) and 7th (481 yds.) . . . The par 5 17th measures 624 yds. . . Baltusrol gets 80 per cent of the net of 278 page program containing \$110,000 advertising . . . USGA gets 20 per cent . . . Advance ticket sale about \$30,000 . . . Parking for 4000 cars provided.

Ford Motor Co. 14 golf leagues in Detroit district spearheaded campaign to get 35,000 Ford golfers playing on National Golf Day . . . Robert Trent Jones designed 5000 sq. ft. practice putting green, traps and approach area for Ike's use at Camp Davis in Maryland hills . . . Place was called Shangri-La when FDR spent time there . . . Jimmy Powers, sports editor and columnist of NY News and sportscaster, takes a good swing in his column at slow golfers . . . Says "unless something drastic is done" about slowpokes on courses the fun of golf will be gone.

Dubuque (Ia.) G&CC celebrates Howie Atten's 3d year as club's pro with big party . . . Bob Zimmerman tosastmaster . . . Atten is protege of Bob MacDonald . . . Arthur J. Newman, now gen. mgr., French Lick Springs (Ind.) hotel and courses put on grand party for Midwest amateur to offset blustery, chilly weather.

Dr. James Watson, Toro agronomist, doing grand job making the circuit of supt. association meetings . . . Wonder how many of the meetings the durable Noer has made? . . . NE PGA in tournament at Wentworth Hall, Jackson, N. H., July 7, 8, 9 . . . Expect field of 50 . . . Pro-am also . . . Frank Grimm, pro at Mauh-Nah-Tee-

See CC, Rockford, Ill., signs Billy Sixty, Jr., as asst.

Women's Western Golf Assn. doing great publicity and planning job for its 25th annual Open championship at Glen Flora CC, Waukegan, Ill., June 14-19 . . . It's oldest women's open championship . . . Winner's trophy is Edna Walker Cup . . . Of the 24 winners 19 now are pros . . . Patty Berg, Louise Suggs and Mildred Zaharias each have won the trophy 4 times . . . Babe was the first 4-time winner.

Best job of describing a course we've seen in a tournament program is one Margaret Curtis has done for USGA Women's Open at Salem CC, Peabody, Mass., July 1, 2, 3 . . . Miss Curtis was USGA Women's Amateur champion in 1907, 1911 and 1912 . . . Expect record New England gallery to see Betsy Rawls defend her title.

PGA sets annual convention for St. Paul Nov. 27-Dec. 3 . . . At men's 37th annual championships, sponsored by LA Municipal Golf Assn. and LA Dept. of Recreation and Parks the Southern California PGA sponsored the Scotty Chisholm perpetual team trophy event for 3-men teams from USGA member clubs . . . Nice bow to the beloved veteran golf writer.

Alfred H. Tull reconstructing Pelham (N. Y.) CC course, making changes required by NY Thruway cutting across the old course . . . Tull also designing changes for Elmwood CC, White Plains, N. Y., to eliminate three thrombosis grades . . . Passaic County Park Commission has Tull plans for 3d nine for future construction . . . Another N.J. job to Tull design was alteration of White Beeches CC, Haworth, for maintenance efficiency as well as playing modernization . . . Bill Mitchell, Danvers, Conn., was contractor on that job.

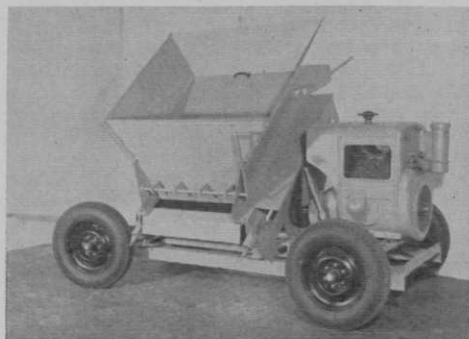
Joe Burbeck, supt., Bethpage State Park, Farmington, L. I., N. Y. has most of construction completed on Bethpage's 5th 18 . . . That's the world's largest golf plant

Wm. F. King, executive vp of Wilson Sporting Goods Co., elected pres., Athletic Goods Manufacturers' Assn. . . . Bill has been with Wilson 34 years and has headed many sports goods industry organizations.

Texas Toro Co. six salesmen all carry cameras for taking colored pictures of golf course work and use pictures at Texas turf meetings and on jobs where they'll show some problems and answers . . . Lesbia Lobo, pleasant Texas youngster who turned pro last winter and showed signs of

(Continued on page 100)

**NEW BIG COMPOST MIXER
CAN BE POWER LOADED**



Royer Foundry & Machine Co., Kingston, Pa., has new Portable Compost Shredder-Mixer with capacity to operate efficiently when power loaded by front end tractor bucket. Big receiving hopper is 60 in. wide, contains baffle plate and adjustable control gate to regulate flow of material from hopper to combing belt. The machine will shred decomposed leaves, compost, and manure, topsoil, sand, sludge, and other similar materials. Its capacity is sufficient to process 12 cu. ft. tractor bucket in 15 seconds, providing material will flow freely through receiving hopper. The unit is powered with a 36 hp air cooled Wisconsin Engine mounted on 4—6.00 x 16" tires, with towbar, and automotive steering. The combing belt is 3 ft. wide and 9 ft. in circumference. A machine of similar capacity also available with a totally enclosed, 15 hp electric motor drive.

**REJOICE WITH JOYCE
SHOE NEW OWNERS**



Here, at one of the sunny southwestern golf fiestas which aren't genuine unless featuring the Queen of the Party, are the two new owners of Joyce golf shoe company; (L) Fletcher Hull and at the right end Kip Bowen. Between them is the one, only and original Scotty Chisholm and between Scotty and Kip is Miss Queen Somebody. We always throw away those names, addresses and telephone numbers away before we get home.

**"LOVE THAT COURSE" REPRINTS
OFFERED BY WORTHINGTON**

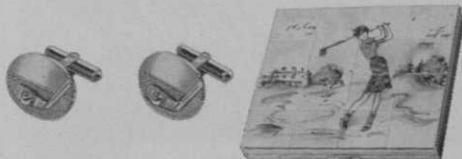
Worthington Mower Co., Stroudsburg, Pa., is offering without cost to golf course supts. and green chairmen reprints of the famous "Love That Golf Course" ad in April Golfing Magazine in sufficient number to mail to each of a club's members.

The advertisement has been hailed by supts. and club officials as tremendously effective in pleasantly enlisting the cooperation of players in keeping the course looking fine and preventing unnecessary maintenance expense.

Most clubs have displayed the advertisement on their bulletin boards, many at their own expense have had reprints made for distribution to their members, and much publicity has been given to the "litterbug" campaign by golf writers and in advertising business journals.

Requests for number of reprints desired should be sent to W. U. Roulette, Jr., Worthington Mower Co., Stroudsburg, Pa.

ATTRACTIVE ACCESSORIES



Handsomely styled are above items offered by the House of Williams. The cuff links are gold filled with raised, fully shaped golf club and ball. For the women, compacts with genuine mother of pearl face, hand painted, complete with protective double inner lid to prevent powder spillage. Details from House of Williams, 37 S. Wabash, Chicago 3, Ill.

MacGregor Golf Co. advises that pros are doing big business with new MacGregor Canvalon \$20 retail bag, in choice of red, green or blue, and large pockets for balls, clothing, shoes, etc. Bag is going over strong in making sales that might otherwise go to stores.

**SABAYRAC ISSUES HANDSOME
NEW PRO SHOP CATALOG**

Ernie Sabayrac, PO Box 678, Miami Springs, Fla., has issued an attractive new catalog of shirts, headwear, club covers, belts, women's golfwear, knit goods, jackets and hosiery.

"The Little Round Man" and his staff are featuring in their lines big names in apparel manufacture.

**DICK KUEHNE NOW SALES MGR.
FOR MALLINCKRODT IN CHICAGO**

Appointment of E. Richard (Dick) Kuehne, 37, of Lincolnwood, Ill., as Chicago district sales mgr. for Mallinckrodt Chem-

ical Works, St. Louis, succeeding the late Walter Nay, is announced by G. C. Bradshaw, western division sales manager.

As Chicago district sales mgr., Kuehne will be in charge of sales activities in Chicago and surrounding communities, Milwaukee and Madison, Wis., and the State of Iowa.

Kuehne joined Mallinckrodt in 1943 as a sales representative in the Chicago area. In 1951 he was appointed assistant district sales manager. Before coming to Mallinckrodt he was a Chicago salesman for the Pure Oil Company.

Kuehne is currently active in the Chicago Perfumery, Soap, and Extract Association. He was a member of the board of directors in 1952 and has worked with several committees, some as chairman, during nine years' membership in the association.

BOWEN AND HULL BUY JOYCE GOLF SHOE

W. H. Joyce, Jr., Pres. of Joyce, Inc., announces the sale of the golf shoe business, operating under the Wm. Joyce Division of Joyce, Inc., to Bowen & Hull, Inc., 81 Masonic Court, Pasadena 1, Calif.

The principals of the new firm are Kip Bowen, who has been with Joyce seven and one-half years, heading up the Wm. Joyce Division, and Fletcher Hull, associated with Joyce for the past two years.

The Wm. Joyce golf shoe products, primarily merchandised through golf Pro Shops, include golf shoes for both men and women and have been manufactured under Joyce patent #2,611,978. The shoes have experienced highly favorable reception from golfers desiring a lightweight, soft golf shoe.

Kip Bowen and Fletch Hull have plans to expand the distribution, which is now essentially on the Pacific Coast, to the entire U. S. market.

Exclusive manufacturing and distribution rights, together with the exclusive right to use the name of Wm. Joyce as applied to golf shoes, and the various descriptive names which have been applied to these shoes, have been granted to the new corporation under a license agreement.

Certain key employees will follow the new organization, thereby insuring continuity of high quality manufacturing processes. In addition, there will be a constant exchange of technical information between the new corporation and Joyce, Inc. to insure leadership in this specialized field.

NADCO INTRODUCES \$60,000.00 BAG CART WHEEL

The National Die Casting Co., manufacturers of Nadco line of Caddy Master golf carts, has developed a new die cast aluminum wheel for use on the four Nadco models. Equipped with anti-friction ball bearings, the new wheel reduces the over-all weight of the golf cart by 2 lbs.

Wm. C. King, sales mgr., says, "The new wheel represents a \$60,000 investment. Research and engineering costs plus dies and tools account for \$26,000. New equipment to produce the wheel cost \$34,000."

The new wheel in a 12-in. size will be supplied on the Nadco 88 and Nadco 880. The 10-inch wheel will be supplied on the Nadco 77 and the new Nadco 66.

RAIN BIRD'S NEW 30-W SPRINKLER FOR DIRTY WATER

A sprinkler designed for use in areas where exceptionally dirty or abrasive water causes excessive wear on parts and wind influence makes a single nozzle sprinkler desirable is being introduced by

Golf Pride
GRIPS.
With traction action



**LLOYD
MANGRUM**
Says:

There never was
a grip with as fine
"Traction Action"
as the Golf Pride.

PROFITS FOR PROS!

Pros featuring Golf Pride grips make EXTRA MONEY — fast and easy.

EASY TO SELL!

Traction action, high swing weight, Rib-Lock, perspiration displacement, and other features make Golf Prides popular.

NATIONAL ADVERTISING!

Newspapers coast to coast. Also in Golfing, Golf Digest and Golf World, plus trade papers.

GET YOUR SHARE!

Many of your members want their grips replaced with Golf Prides. Others want new clubs with Golf Prides. Get your share!

FAWICK FLEXI-GRIP CO.

Box 8072 Akron 20, Ohio

