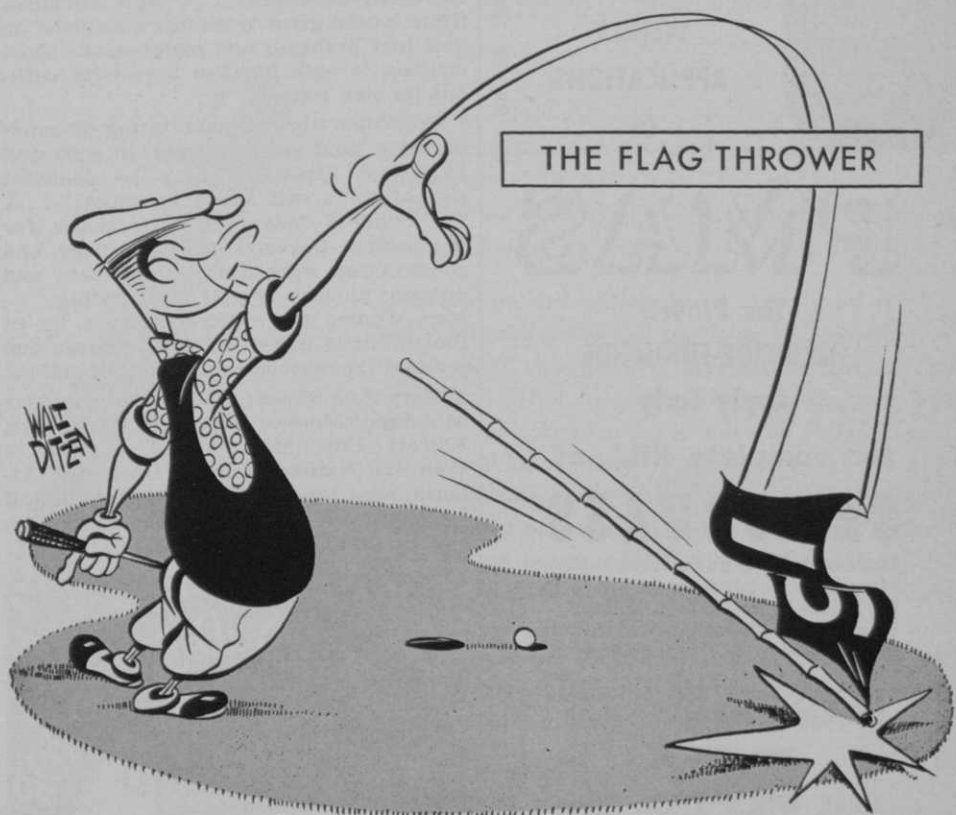


# Poison on the Green\*



\* So is **Acti-dione**<sup>†</sup> "poison" to the 4 major bent grass  
FERRATED  
diseases—melting-out, dollar spot, brown patch, and fading-out.  
Effective control costs only 40¢ per 1,000 sq. ft. for one spray  
application.

A product of **Upjohn**  
**Research** for the control of plant diseases

THE UPJOHN COMPANY • CHEMICAL SALES • KALAMAZOO, MICHIGAN

<sup>†</sup>Registered trademark of The Upjohn Company for its brand of the antibiotic, cyclolheximide.



A  
Constant  
Need

WEEKLY  
APPLICATIONS  
OF

# PMAS

The Proven  
HERBICIDE-FUNGICIDE

Apply Early

for complete KILL of  
**CRABGRASS**

More and more, golf course superintendents depend on double acting PMAS to keep greens and fairways free of crabgrass. PMAS gives positive and economical results.

Weekly Applications

COST BUT **55¢** PER GREEN

... and important labor savings are possible too, because regular use of PMAS also gives effective control of such fungus diseases as:

COPPER SPOT    DOLLAR SPOT  
BROWN PATCH    PINK PATCH  
SNOW MOLD

*Helminthosporium-Curvularia*

Get PMAS from your Golf Course Supply Dealer ... write us for literature detailing results of college tests.

**W. A. CLEARY CORP.**  
NEW BRUNSWICK, N. J.

... Land donated by Mr. and Mrs. J. B. Arthur ... Cash, materials, equipment and labor contributed by citizens and local businesses in course building.

Indiana University beginning construction of 18-hole course at Bloomington ... Jim Soutar, pro at Bloomington (Ind.) CC, designed course ... Now Michigan State where great work has been done on golf turf problems and maintenance short courses, is only Big Ten university without its own course.

Great activity in rehabilitating or building new sand green courses, in west and southwest especially, may be soundest sign of golf's vast American appeal ... A few hundred dollars to get a mower for the pasture fairways, cups and flags, and construction work done by members, and another nursery of golf is operating ... Men, women and children have a lot of fun for little money at these courses and some of them become mighty good golfers.

Mary Ann Musser, 15-year-old daughter of Johnny Musser, pro at All View Club, Ellicott City, Md., showed so well in Women's National Capital Open, Mid-Atlantic pros forecast a great future in golf for the lovely lassie ... Good to see Jim



The "know-how" developed through years of building and testing golf course equipment makes every Standard product "tops" in the field ... that's why we "guarantee satisfaction or money back" ... and that's the reason YOU should always look for, and deal, with a Standard Authorized Distributor.

**STANDARD MANUFACTURING CO.**

Box G, Cedar Falls, Iowa

FLAGS  
FLAG POLES  
BALL WASHER  
HOLE CUTTERS  
PUTTING CUPS  
RULE SIGNS  
BAG RACKS  
MARKERS  
ETC.

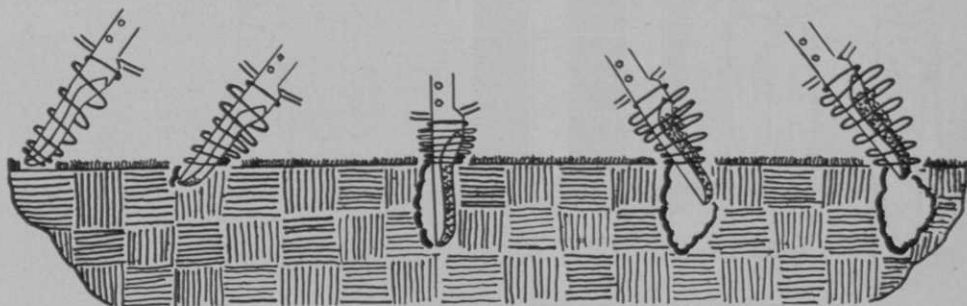
# the Spoon Cultivates



Spoons are the heart of the Aerifier\*. The patented spoon principle was designed especially for cultivation of turfgrass areas. To understand why "cultivating action" is so important, think about why you aerify.

*To overcome soil compaction . . . only by stirring and rearranging the soil particles is it possible to restore good structure. To increase root growth . . . only the Aerifier loosens soil around the openings so roots can spread out and develop fully. Glazed soil around holes made by spikes or tubes prevents root penetration. To make greens softer without excessive use of water . . . only "cultivating action" increases resilience, which is so important from the standpoint of the players. The Aerifier makes greens that hold the well-played shot, even when soil is kept on the dry side. To increase penetration of water and fertilizer . . . loose-walled openings are the only kind that allow rapid movement of water through the soil.*

When you spend time aerifying, do it the effective way — with the AERIFIER.



*West Point Products Corporation*

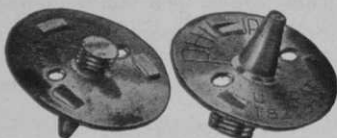
*West Point, Pa.*

\*Reg. U. S. Pat. Off.

Sold in U. S. and Canada

Pat. No. 2,580,236

# PHILLIPS CAM LOCK



## The Answer to Lost Spikes

CAM LOCKS have been added to the regular LARGE BASE spike. The CAMS hold spike fast in position. Will not rough sole.

**F. C. PHILLIPS, INC.**  
STOUGHTON, MASS.

Beattie of Wilson's NY pro sales staff full of the old pep at Baltusrol . . . Jim beat a long siege of sickness.

Dunlop Rubber Co. giving cocktail party for Ed Furgol at Hotel Gotham, NYC, July 6 . . . Ed played Dunlop ball in winning National Open . . . The party will see return to circulation of Vinnie Richards, Dunlop vp, after more than two months in French hospital at New York . . . Richards conquered strep infection which had him terribly close to going out.

Naval Amphibious Base at Little Creek, Va., to have 9-hole course in play by Sept. . . . Work done by base personnel . . . No cost to taxpayers and a great thing for fellows at Little Creek which is certainly no resort or close to one . . . Ava, Mo. 9-hole course opened by G. E. Dye.

Charlie Howe resigns as pro at Plant City (Fla.) G&CC to go into business for himself . . . Bub Tiley now Plant City pro . . . Crown City Ranch many 9-holes at Alhambra, Calif., designed by Bill Bell, now being built . . . Architect Willard G. Wilkinson says new many Pali course near Honolulu will be ready for play in

## GENERAL STEEL LOCKER ROOM EQUIPMENT

At last we have found the right size locker for our needs.



Golf lockers by General Steel provide ample open space for clothing as well as compartments for your smaller personal items, golf balls, etc. Why not let General Steel care of your locker room needs?

General Steel's splinter-free hardwood locker benches are ideal supplemental equipment.



**GENERAL STEEL PRODUCTS CORP.**

FLUSHING 55, NEW YORK. INDEPENDENCE 3-3000

Our experienced sales engineers are available to assist you at any time.

FOR YOUR MEMBERS...

## Greater bathing satisfaction

Clubmen look forward to shower bathing to banish fatigue from work or play and restore the feeling of fitness. But just any shower isn't good enough. The truly satisfying bath is delivered by a SLOAN Act-O-Matic SHOWER HEAD—a greatly improved cone-within-cone spray that is evenly distributed and undistorted. It is directed as desired and the volume is fingertip controlled. The Act-O-Matic provides the shower bathing satisfaction your members deserve. And it has many advantages for management.

FOR YOU...

## Maximum freedom from complaints • servicing • waste

In this entirely different shower head you get all of these very important advantages:

- 1 Automatically Self-Cleaning**—Patented automatic action thoroughly flushes the interior of shower head each time it's used.
- 2 No Clogging**—All clogging particles are automatically and completely discharged.
- 3 Maintenance Eliminated**—Because this shower head is always free from clogging and other faults it requires no servicing.
- 4 Water Economy**—Exclusive design provides efficient, enjoyable bathing with big water savings.
- 5 Fuel Savings**—It costs money to heat and pump water, thus water economy means saving costly fuel.
- 6 Easily, Quickly Installed**—Equipped with connector that fits all standard shower arms, old or new.
- 7 Vandal-Proof Model**—To prevent tampering or theft, a vandal-proof model is available at slight additional cost.

The

**SLOAN**

*Act-O-Matic*

**SHOWER HEAD**

**AUTOMATICALLY  
SELF-CLEANING**

*each time it's used*

## SLOAN VALVE COMPANY

4328 West Lake St., Chicago 24, Ill.

Please send me full information on the Act-O-Matic Shower Head.

NAME, TITLE \_\_\_\_\_

NAME OF CLUB \_\_\_\_\_

STREET ADDRESS \_\_\_\_\_

CITY, ZONE, STATE \_\_\_\_\_

# Shine?

Sure! You need a clean club for a clean shot.

## LEWIS Golf Club Cleaner



ASK FOR DEALER  
DEMONSTRATION

**G. B. LEWIS CO. WATERTOWN, WISCONSIN**

This extra special service can make an extra special friend on any course. "Shines" the golfers' clubs in a jiffy with quick-and-easy automatic brush action. Can be coin operated, too, to pay for itself. Worry-free service for years and years and years. Add a big measure of pleasure for your members or patrons... "shine" their clubs with the popular Lewis Golf Club Cleaner.



July 1955 . . . It's a \$695,000 project . . . Wilkinson, who has built some great courses in the U. S., says Pali will be one of the world's best and most beautiful . . . Francis Brown headed group which got the course started.

Joe Kirkwood, his trick shot performance and himself as fresh and lively as ever, having his biggest season . . . Got great boosts from top defense brass for his show at Quantico . . . Joe's added many small towns to his schedule this year and says type of golf and condition of courses in small towns are amazingly good . . . Two shows daily many places . . . Course in afternoon and range at night.

The 16 women pros who were in the Women's National Capital Open are treasuring beautiful ceramic pins with their names inscribed which were made and given them by Mrs. Al Houghton, wife of the pro at Prince Georges G&CC where the event was played . . . Greer, S. C. group headed by Dr. L. M. Davis and F. L. Crow, building 9-hole course.

Spokane Valley CC to build 18-hole course at Liberty Lake near Spokane, Wash. . . Ken Beck from Bowling Green, Ky., many course to pro job at Hillcrest

## NOW A PROVEN SELLER...

### CHAMPION'S NEW "BREAK 90"

# Golf Glove

Once they try it on . . . you've made a sale. The smooth soft capeksin leather allows the golfer to get a skin-tight feel of the club. And the wrist and hand are held in correct position by the comfortably built-in resistor. Yes, the "BREAK 90" will lower the score as much as 10 strokes. It's been proven by many, many enthusiastic golfers.

**CHAMPION'S NEW "BREAK 90" HELPS THE GOLFER LOWER HIS SCORE BECAUSE:**

- 1 . . . keeps left hand and wrist firm and straight in the all important follow through.
- 2 . . . keeps left hand in position for straight true putts.
- 3 . . . allows hands and wrists to swing into proper position at top of backswing.

Order today or write for more information and price list on the new "BREAK 90" and other golf glove styles by CHAMPION . . .



**CHAMPION GLOVE MANUFACTURING CO.**

309-11 COURT AVENUE, DES MOINES, IOWA

**AUTOETTE**

*The new approach to golf*



**G**olfers at exclusive clubs everywhere are finding Autoette Golfmobiles the new approach to golf. This smart electric car saves leg-work, keeps you fresher to play better golf, adds more fun to the game, too.

The Autoette carries two players and their clubs over fairways and greens quickly, quietly, without ever damaging the turf. Get an Autoette of your own or ask your Pro to investigate our attractive rental plan.

**AUTOETTE**  
*Golfmobile*  
PUTS THE "GO" IN GOLF

mail this coupon for illustrated folders



**Note to Pros & Club Managers:** Let Autoette help you prepare a rental plan that will make golfmobiles available to your club members at rates they will approve — for extra income you'll like.

**P.S. to Golf Superintendents:** We also manufacture a 1/4-ton Autoette Pickup Truck for transporting tools, seeds, and supplies. This speedy electric pickup is powerful, dependable, and will not harm the turf.

**AUTOETTE, INC., Dept. 174**

730 West Esther • Long Beach 13, Calif.

Please send me brochure describing Golfmobile  Pickup Truck . I am interested in information about renting Golfmobiles to members of my club

Name \_\_\_\_\_

Address \_\_\_\_\_

City \_\_\_\_\_ State \_\_\_\_\_

# Tufhorse

## Custom Features Sell for You!



MODEL  
LP 628

Watch sales boom when you sell the famous 1954 Tufhorse "MT TOURNEY" line! Tufhorse bags give your customers professional features normally found only in custom bags. Body of the LP 628 is of CANVALON, a new miracle fabric combining the durability of duck with the abrasive resistance of vinyl.

**SELL TUFHORSE!**

# MacGregor

THE GREATEST NAME IN GOLF

4841 Spring Grove Ave., Cincinnati, Ohio

MADE BY  
**DES MOINES GLOVE & MFG. CO.**  
DES MOINES, IOWA

CC, Owensboro, Ky. . . . Building new country club at Majors Field, Greenville, Tex. . . . Russellville, Ala., to have munny course . . . Chipley, Fla., 9-hole munny course restored to playing condition by private club organization after several years' disuse.

Architect George A. Hoffman says new 27-hole Ascarte munny course at El Paso, Tex., may be ready for play this fall . . . Laramie, Wyo., restoring Gray's Gables course to be used as public course . . . Work being pushed on Lockhaven CC 18 near Alton, Ill . . . Robert Bruce Harris designed the course.

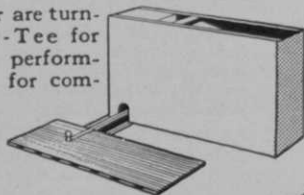
Former National Open champions at Baltusrol were Freddie McLeod (1908), Johnny McDermott (1910, '11), Walter Hagen (1914, '19), Chick Evans (1916), Jim Barnes (1921), Gene Sarazen (1922, '32), Johnny Farrell (1928), Billy Burke (1931), Tony Manero (1936), Lawson Little (1940), Craig Wood (1941), Lloyd Mangrum (1946), Lew Worsham (1947), Ben Hogan (1948, '50, '51, '53), Cary Middlecoff (1949), Julius Boros (1952).

Tony Frauenknecht has been locker-room attendant at Upper Montclair (N.J.) CC for 31 years . . . Got on the job a year

# Will-Tee

## FOR GREATER DRIVING RANGE PROFITS

Automatic teeing system that makes you more money two ways: eliminates costly breakdowns — steps up your volume and profit because Will-Tee is fast, customers drive more balls. As soon as ball is hit machine automatically tees up next ball. Operates by a counter balancing action. No motors, levers or pedals to operate. Heavy steel construction. . . defies weather conditions. Holds 100 balls. Ranges the country over are turning to Will-Tee for "fool-proof" performance. Write for complete information.



**WILL-TEE** 612 Chaffee Street  
Fort Des Moines, Iowa



# INTRODUCING

THE GOLF CAR THAT'S YEARS AHEAD

## Fairway King

This sleek, sharp power-packed golf car is the answer for touring the courses in relaxation and comfort.

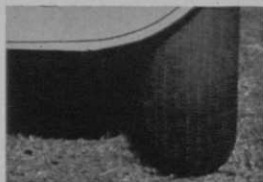


NOW the "Fairway King" offers the first truly modern golf car . . . the result of two years of experiment, engineering and design, and tested on some of the nation's toughest courses.

This car has it . . . performance . . . dependability . . . style . . . comfort . . . and low maintenance cost. IT is the money-maker that golf courses have been wanting!



Sturdy bag carrier . . . "Tight Grip" racks . . . Bags can't fall out or tip.



Big wide tires, 6.00 x 6 on all 4-wheels . . . No cutting of turf.

For further information clip coupon.



- I want full particulars, prices, etc., on the "Fairway King."
- I am interested in a "Fairway King" dealer franchise.

Name \_\_\_\_\_  
Address \_\_\_\_\_  
City \_\_\_\_\_ State \_\_\_\_\_  
Phone \_\_\_\_\_

*Fairway King* inc.

1349 WEST RENO  
OKLAHOMA CITY, OKLAHOMA

# How you can attract More Customers and More Money to your DRIVING RANGE



U. S. Driving Range Balls are designed and built to rigid specifications. To stand the terrific beating that a driving range ball must take, U. S. Rubber has experimented, tested and built a special range ball that has proved its quality for years.

A "cheap" product is never satisfactory or economical. "U. S." range balls are more economical than seconds, or ordinary balls sold at lower prices. They are a better buy than old, discontinued, reprocessed or repainted balls sold at "bargain" prices.

"U. S." offers the most complete and varied assortment of distinctive markings, together with first-quality golf balls, more durable covers, and a whiter, longer-lasting paint job.

Contact your nearest U. S. Rubber branch or write to Golf Ball Department, United States Rubber Company, Providence 1, R. I.



**UNITED STATES  
RUBBER COMPANY**

after arriving here from Switzerland . . . Lakeview CC, 9-hole course at Cheat Lake, 10 miles from Morgantown, Pa., opened . . . Burning Tree Club, Ike's home club, to have \$250,000 in improvements . . . Robert Trent Jones remodeled four of the club's greens last fall.

Fine column by Jim Foster in Greensboro (N. C.) Record on Lionel Calloway . . . Brother Harold has been teaching pro at Pinehurst for 30 years . . . Foster told about Lionel inventing the Calloway system of handicapping when he was pro at Bradford, Pa., in 1932.

Highfield Club building 9-hole course at Middlebury, Conn. . . Pequabuck (Conn.) GC formally opens new \$45,000 clubhouse . . . Don Murray, sports columnist of Plainfield (N. J.) Courier-News reprinted funny story by late O. B. Keeler crediting Johnny Kinder, Plainfield CC pro, with "worst 69" in golf history . . . It was on Pinehurst No. 2 in 1932 North and South Open . . . Johnny was one over after four holes, did the next six holes in 18, the next five in par and finished 6-4-6.

Billy Joe Patton is a young man you like the first time you see him and he grows on you so much you find yourself



## SHINE?

A few quick strokes of this paddle won't count against your score. A clean ball clicks off par far better than the penalty of lost balls too dirty to find.

### HOW TO MAKE A HAPPY GOLFER

Better-than-ever Lewis Ball Washers are ready to come to the aid of the golfer. Up goes the paddle, in goes the ball, and in a few quick seconds, you're ready for the tee-off.

#### WEATHER WINNER

Two "stick-fast" coats of paint shielded by an all weather-protector plastic. Any season . . . year after year . . . ready to keep your golfers happy.

**KEEP YOUR PATRONS SATISFIED**  
Order from your dealer now!

## LEWIS GOLF BALL WASHERS



G. B. LEWIS CO., Watertown, Wis.