

3 ways to better turf with triple-acting

AERO[®] CYANAMID, GRANULAR

... kills weed seeds

... hastens decomposition of organic matter

... and in addition, supplies 20% nitrogen, 70% lime

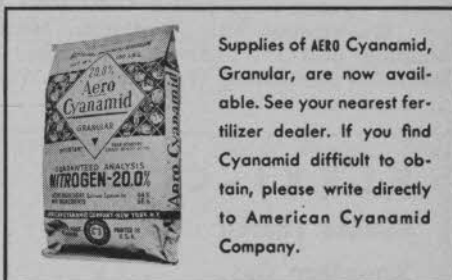
1. WEEDED COMPOST. You can render well-decomposed compost practically free of weeds by incorporating Cyanamid at the rate of 13 lbs. per cubic yard of material. After 4-6 weeks, weed seeds are killed and finished compost, fortified with Cyanamid's 20% nitrogen, is safe to apply.

2. FIELD COMPOSTING. For simplified, mechanized compost production, a satisfactory material can be made in one year by incorporating cover crops, crop refuse, manure, rotted sawdust or other sources of organic matter into a loamy soil. Cyanamid, disked in with each addition of organic matter at the rate of 75-100 lbs. for each ton of dry matter, will hasten decomposition. For weed control, Cyanamid can then be mixed with the top 2-4 inches of soil-compost at 75-200 lbs. per 1000 square feet. Wait 4 to 6 weeks before applying compost.

3. SEEDBED WEED CONTROL. To produce a weeded seedbed, simply broadcast Cyanamid at the rate of 50 lbs. per 1000 square feet on the surface of a prepared seedbed, and rake lightly.

Water thoroughly and keep moist during a 3-4 week waiting period. Result: a practically weed-free seedbed, ready for the production of the finest turf.

USE A COMBINATION OF THESE PRACTICES to produce better fairways, greens and park turf... the *modern way*... the Cyanamid way. Remember—Cyanamid contains 20% long-lasting nitrogen—it fertilizes and weeds *in one operation*. Write today for additional information on the Cyanamid way to better turf.



Supplies of AERO Cyanamid, Granular, are now available. See your nearest fertilizer dealer. If you find Cyanamid difficult to obtain, please write directly to American Cyanamid Company.

AMERICAN Cyanamid COMPANY

AGRICULTURAL CHEMICALS DIVISION
33-C Rockefeller Plaza, New York 20, N. Y.



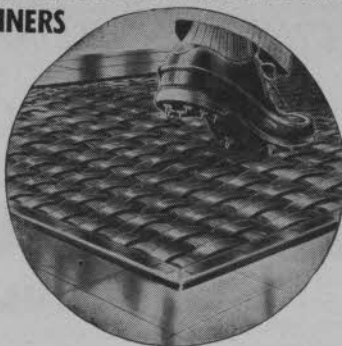
PNEU-MAT-RUNNERS

Are Spike-resistant,
Tough and Durable

Protect Clubhouse
Floors from Spikes

Provide Soft Rug-like
Cushion Under Foot

Are Reversible for
Added Wear



STANDARD
WIDTHS!
20"-24"-30"
36"-42"-48"

TRIAL SECTIONS
24"x60"—\$10.00
20"x24"—\$ 4.00

Postpaid

Write Today
for Details

SUPERIOR RUBBER MFG. CO., INC., 122 East 25th St., New York 10, N. Y.

ing All-Southern Hotel Exposition at Atlanta, laid plans for 1954 national convention of CMAA . . . Washington State Parks and Recreation Commission wants communities near Sun Lakes Park in eastern Washington to take over operation of park course and develop play . . . Holly (Col.) CC builds 9-hole sand-green course.

Big party for Freddie Lawson, 28 years pro at Flint, Mich., Swartz Park many course . . . Flint's public and private course golfers raised fund for sending Fred and his wife Betty, back to the old home town of Carnoustie to watch the British Open.

Meadowbrook Club, Westbury, L. I., N. Y., 317 acres sold for parkway extension and industrial sites, for \$960,000 . . . Club will use course and polo field until Nov. 1, 1954 . . . Will rebuild at another site . . . Greely, Colo., 9-hole sand green course opened . . . Junior CofC built it . . . Washtenaw CC, Ypsilanti, Mich., building pool . . . Architect James G. Harrison remodeling Woodland CC, Wes-

ton, W. Va. . . Harrison also building Cheat Lake course near Morgantown, W. Va.

Controversy about twilight rates at Springfield, Mass., two many courses disclosed that twilight golf was so popular last year 20 per cent of rounds were played at twilight rates . . . Kern River GC, Bakersfield, Calif., expects to have its second 9 in play in December . . . Frederic C. Heutte, Norfolk (Va.) Supt. of Parks and Forestry forecasts that within 5 years from time planned Stumpy Lake course is completed Norfolk will be building another 18-hole public course.

New second 9 at Ridgeway CC, Memphis, Tenn., opened . . . Harmony Landing CC being organized at La Grange, Ky. . . Sixth graders at Vaughan school, Bloomfield Hills, Mich., taken by teacher to see amateur-pro event at Pine Lake CC, so kids would get idea of golf . . . Among pupils was Marcia, 10-year-old daughter of Henry Ransom, Pine Lake pro.

Dave Coull back from Caracas, Venezuela, to be supt., Pomona (Calif.) CC . . .

FLEXI-COMB

Reduce Thatch

Smoother Cut

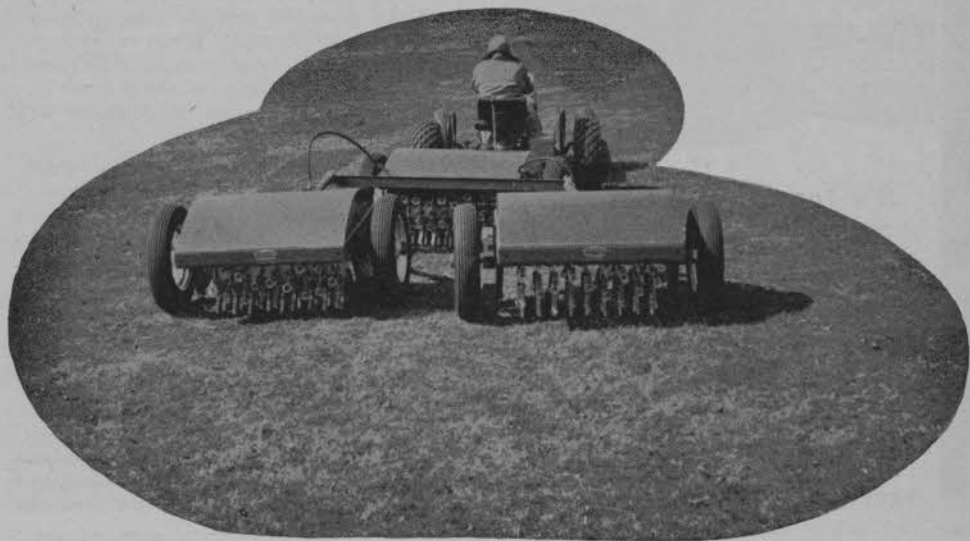
Overcome Weeds



Flexi-combs fit Toro and Worthington mowers . . . Simple depth adjustment . . . Lock out of operating position when combing is not required.

West Point Products Corporation West Point, Pa.

Necessary for Fall Renovation the AERIFIER*



Many golf course superintendents consider the Aerifier a necessity for fall renovation. All other treatments show up better as a result of aerifying. Aerify to obtain greater value from fall fertilizer application. Aerify to allow seed to come in contact with soil. Aerify so fall rains can soak deep into the soil.

The Aerifier breaks through crusted soil and matted plant remains at the surface. It stirs and loosens soil in the root zone. The Aerifier is just one tool in the maintenance program, but it is an important one.

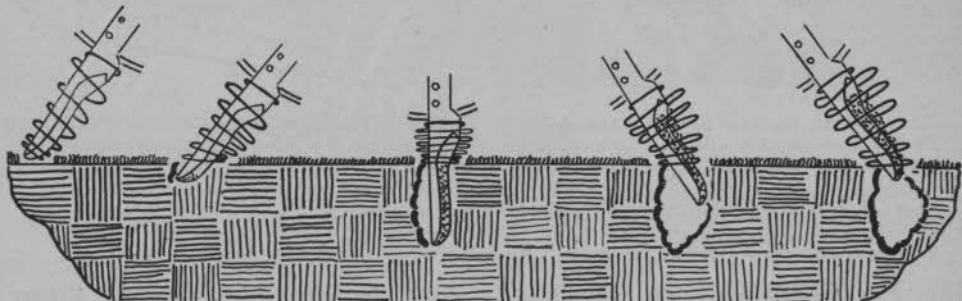
You cannot revive turf on wornout soil. Renew the soil with the Aerifier as the first step in the renovation program.

West Point Products Corporation

West Point, Pa.

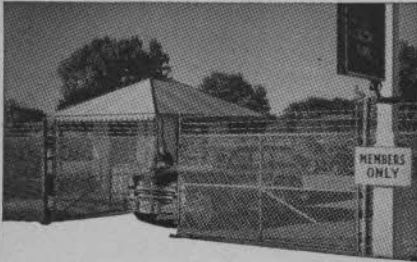
*Reg. U. S. Pat. Off.

Pat. No. 2,580,236



PAGE -Since 1883 FENCE

• AMERICA'S FIRST WIRE FENCE •



It's Your Responsibility

• Whether officer or committeeman, you share responsibility for privacy and the protection of both property and persons. For you we have illustrated facts that are tailored to the best interests of your club. They supply what you should know about the varied styles and heights of Page Chain Link Fence and how these protective barriers are expertly erected by experienced, local specialists. Write for **DH-142** and name and address of nearby Page Fence engineers and erectors.

PAGE FENCE ASSOCIATION • Monessen, Pa.

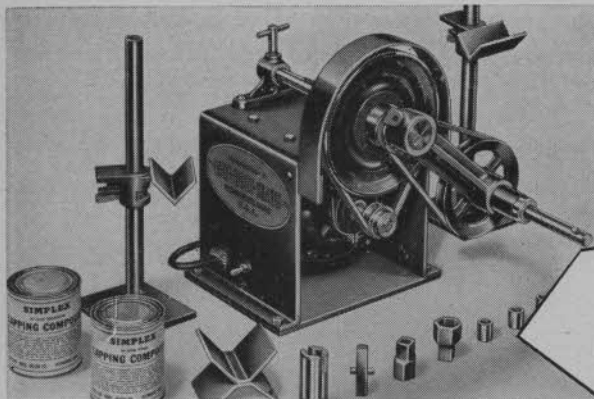
Bonnie Randolph signed as asst. by Jack Futerer, pro at Hawthorne Valley CC, Cleveland, O. . . . Bonnie was Ohio amateur star before she turned pro and joined Burke Golf staff last winter . . . Joe Vanstory to build 9-hole course at Eudora, Ark.

City firemen building pitch-and-putt course in Windber, Pa., Recreation Park . . . More than 200 golfers from 20 states entered in 5th annual Western Seniors' championship at Fred Waring's Shawnee CC, Shawnee on Delaware, July 9, 10 . . . Harvey Bunn now pro at Juniper GC, Redmond, Ore.

USGA rule for its stroke play championship ties is an extra 18, and after that hole-by-hole until winner is determined . . . Gene Mosher, pro at Toy Town Tavern course, Winchendon, Mass., was architect for new combination pro shop and golfers' quarters for the resort establishment . . . Gene and John Packard, Toy Town Tavern mgr. worked out the design together . . . Gene's been at Toy Town 27 years.

Fine story on Santa Fe (N. M.) G&CC and what its pro-supt. Fred Newnham has done to make it a valuable civic asset and attraction, in the Santa Fe New Mexican

REDUCE SHARPENING COSTS!



with a

SIMPLEX

Portable Lapping Machine

\$69⁵⁰

Complete with 1/3 H.P. Motor and reversing switch

This compact, portable Simplex Lapping Machine will recondition with lapping compound any reel-type hand, power, or gang mower.

Keeps them in top cutting condition between grinding jobs. Just carry the Simplex out to the mower and use it right on the grass! Can

be used on a bench or on the floor too. Couples to either side of a mower. Gang mowers need not be unhitched. Drive shaft is adjustable from 3" to 17" and runs either direction at the flick of a switch. No noisy gears — operation is quiet, simple, dependable. Write today for illustrated, descriptive folder.

The FATE-ROOT-HEATH CO. Dept. G-8-S, Plymouth, Ohio

Here is the
Shower Head that's

**AUTOMATICALLY
SELF-CLEANING**

each time it's used

NO CLOGGING • NO DRIPPING

There is no shower head like the new SLOAN Act-O-Matic. The exclusive feature which sets it apart from all others is its *automatic self-cleaning action*. The unique spray disc moves downward into shower position when the water is turned ON. A cone-within-a-cone spray of maximum efficiency is delivered. When the water is turned OFF the disc is moved upward, draining the head instantly.

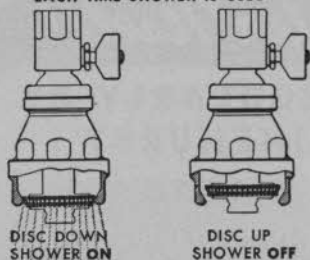
Because the water is completely removed, the Act-O-Matic SHOWER HEAD does not clog or lime up, and therefore it will not deliver irregular or distorted spray patterns. The Act-O-Matic is also economical in use. It saves water, fuel and maintenance service. (Institutional models available.)

SLOAN VALVE COMPANY

4328 WEST LAKE STREET

CHICAGO 24, ILLINOIS

THE Act-O-Matic Disc MOVES
EACH TIME SHOWER IS USED



OFF position opens large, free waterway
permitting Automatic Self-Cleaning

THE SLOAN

Act-O-Matic

SHOWER HEAD

The SLOAN Act-O-Matic SHOWER HEAD is a product of Sloan Valve Company, whose flush valves are in world-wide use — in buildings of every type and on ships at sea.

More Sloan Flush Valves are sold than all other makes combined.



SLOAN VALVE COMPANY
4328 West Lake St., Chicago 24, Illinois

Please send folder containing full information on your
Act-O-Matic SHOWER HEAD to:

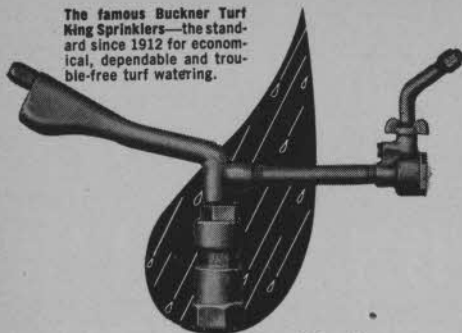
NAME _____

FIRM NAME _____

ADDRESS _____

CITY & STATE _____

The famous Buckner Turf King Sprinklers—the standard since 1912 for economical, dependable and trouble-free turf watering.



Economical, Trouble-free Golf Course Watering

No golf course watering problem is too tough for Buckner sprinklers. A wide range of performance to choose from. Each item developed to do particular jobs efficiently. Buckner's Perfect Curtain of Water is your assurance of uniform distribution without waste.

Buckner dealers offer a complete service from individual units to permanently installed systems. Write for complete information.



BUCKNER MANUFACTURING COMPANY, INC.
Box 232 • Fresno 8, California

Vacation edition . . . Jack Daray, veteran pro and architect, now living in Coronada, Calif. . . . Jack went there from Chicago two years ago when in bad health . . . Now he's in great condition again . . . His son Jack, Jr., commander in navy, is back in US after Korean service.

Big excitement at Burning Tree Club and it's not because Ike is whipping 7-wood shots close to the cup on a 135 yd. hole . . . The big news is arrival of 6¼ lb. Miss Nancy Jo Saylor in family of asst. pro Don . . . Mrs. Saylor, Don, and 7-year-old Donny, Jr., say Her New Highness is positively the sweetest.

Here's another selection — from Latelle M. LaFollette — for distinction as longest golf hole . . . It's 650 yd. 4th at Elmwood CC, Charleston, W. Va. . . . LeRoy Wilcox now supt. Ottawa (Ks.) CC . . . A lot of yowls about stroke-and-distance penalty for out-of-bounds on courses having small, tight areas.

Bill Witherspoon, pro at Southern Hills CC, Tulsa, Okla., successfully through ulcer operation at Mayo Clinic, Rochester, Minn., and back on the job at Tulsa . . . Bill served a term as national PGA treas. . . . That never does ulcers any good . . . Powered golf buggies catching on at

TURF that Speaks for Itself!

MILORGANITE IS USED REGULARLY BY HENSON MAPLES AT PINEHURST

During the winter season from early fall until late spring of the following year, Pinehurst is a paradise for golfers with four fine courses to choose from and another nine holes in prospect.

Henson Maples, and his father — Frank Maples — before him, have the reputation of producing and maintaining as fine winter greens as there are in the south. Even the best golfers consider their greens the equal of bent grass greens in the North.

Year after year Henson and his father have used and relied upon Milorganite because they believe it to be the best source of nitrogen for rye grass greens.



Turf Service Bureau

THE SEWERAGE COMMISSION, Milwaukee, Wis.

GOLF CLUBS
USE MORE

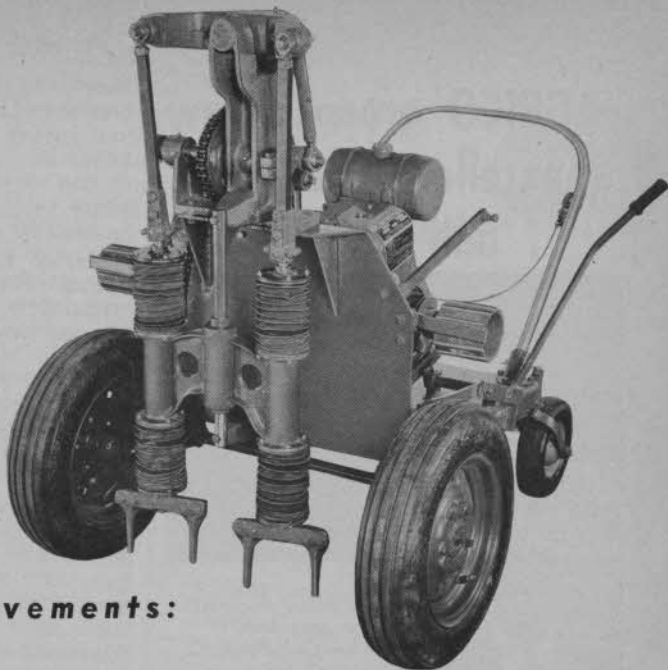
MILORGANITE

THAN ANY
OTHER FERTILIZER

The *NEW* Model FERGUSON NIGHT CRAWLER

GREEN AERIFYING
MACHINE

—with these 12
important improvements:



1—New one-piece, die formed, hot rolled $\frac{1}{4}$ in. steel frame. 2—New, stronger one-piece cast ram housing. 3—New, durable airtight compensating bellows protect ram bearings. 4—New jack shaft casting assures positive chain and belt alignment. 5—Uni-ball joints replace upper Pittmans at walker beam ends. 6—New one-piece head casting assures walking beam bearing alignment. 7—

Yoke springs have been eliminated. 8—New one-piece steel tube handle; vibration reduced to amazing degree. 9—New one-piece axle construction. 10—New belt guard and deep groove pulleys. 11—New, heavier single main chain and sprockets. 12—Oilite bearings throughout. Abundantly powered with AKN Wisconsin engine. Change-over kits are available for all previous models.

More than ever, in this new model, the power driven, vertical tine action of the NIGHT CRAWLER proves outstanding in its operating advantages and its fast, clean-plug aerifying results. It really works turf improvement wonders, with trouble-free efficiency, safety and economy.

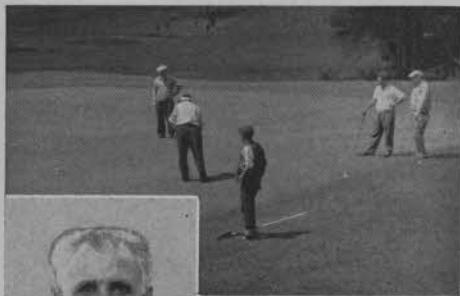
LET THE NIGHT CRAWLER PROVE TO YOU
THESE 10 DISTINCT ADVANTAGES:

1. No damage to putting surface. The Night Crawler can be used any time.
2. More holes per square foot.
3. Deeper penetration under all conditions.
4. Fast (18 greens in two days).
5. Clean cutting tines will not transplant crabgrass and Poa Annua.
6. Turns around on green while in operation.
7. No mechanical clutches — cam operated from one lever.
8. Climbs steep banks and approaches.
9. Operates easily — not a man-killer.
10. Straight-in straight-out aerification.

Write for the name of your nearest Night Crawler dealer

BERRIEN TOOL & DIE, Inc. Eau Claire, Mich.
DIVISION OF SOUTH BEND SCREW PRODUCTS, INC., SOUTH BEND, IND.

"AGRICO greens show excellent growth and color"



— Cosmo Piantedosi, Superintendent, Commonwealth C. C., Newton, Mass.

"Regular feeding of AGRICO COUNTRY CLUB has always given my greens excellent growth and color," reports Cosmo Piantedosi, superintendent at Commonwealth Country Club, Newton, Mass.

"In November, I applied AGRINITE to my greens after I last cut them," he goes on to say. "The results in the spring were very good. The color was good, too, and remained a long time. Also the turf thickened up considerably. Use of Agrico and Agrinite has given me the utmost satisfaction and I shall certainly continue to use these fine products."

Order Agrico now—it's America's premier Golf Course Fertilizer. Contains both organic* and inorganic plant foods. Ask your regular supplier or write to The AMERICAN AGRICULTURAL CHEMICAL Co., 50 Church Street, New York 7, N. Y.

*Organic derived from AGRINITE, the better (over 8% nitrogen) all-organic plant food.



AGRICO
Country Club
FERTILIZER

many clubs . . . Bringing into a lot of play members with leg or heart trouble, and paying well for pros . . . Pros very happy about play promotion and earnings of the carriages but believe service for minor repairs will have to be better organized by distributors.

Shirley Rogbins from pro job at Big Spring (Tex.) CC to Ranchland Hills CC, Midland, Tex. . . . C. A. DeWees from Mineral Wells succeeds Rogbins at Big Spring . . . Alex Watson, Leewood CC, Tuckahoe, N. Y., veteran pro, laid up in Bronxville (N. Y.) hospital . . . Alex suffered serious illness at Dunedin, Fla., last winter during visit to PGA National course.

Hogan's victory in British Open forecast in print by more pros, amateurs and golf writers than ever guessed right before . . . Home-coming celebrations at New York and Ft. Worth really got inside Ben and had his eyes wet . . . Strenuous schedule of the welcoming affairs, starting with official N. Y. welcome and parade, then Golf Writers' Assn. lunch engineered by Grannie Rice, Linc Werden, Fred Corcoran and Jimmie Demaret . . . Next day dinner with USGA as



Score a "birdie"
SEED THIS FALL
WITH *Scott's*®

Look over your turf requirements and like many of the nation's leading clubs you'll find Scotts select seed assures outstanding turf. Use Scotts this Fall and win enthusiastic player acclaim. For weed control use Scotts 4-XD. Dry applied in a jiffy—safe—sure. Write for recommendations and prices.

O M *Scott* & SONS CO
Marysville, Ohio
also Palo Alto, Calif

Scott's ARE FAMOUS
FOR CHAMPIONSHIP TURF

host . . . Then to Ft. Worth and the super blue plate special and oratorical classic back in the old home town with the I's of Texas ringing clear . . . Now Ben is sure enough worn down and badly in need of a rest . . . People forget that the nature of his nearly fatal injury is such that he can't subject his system to beating that would crack an iron man.

Hogan, when he gets rested, intends to start a custom-made club plant in Ft. Worth . . . Says he doesn't want a big business, but strictly de luxe clubs with some new features . . . Doesn't plan to play in any competitive event prior to 1954 Masters' . . . His decision means he won't play on the PGA's Ryder Cup team at Wentworth, Eng., Oct. 2-3.

Next to Hogan's conquests biggest national golf publicity this year has been on Babe Zaharias and her valiant battle against cancer . . . Babe's return to competition in George S. May's World championships at Tam O' Shanter, Chicago, made sports page headlines all over the world . . . George opened his gala schedule with big cocktail party and dinner to foreign contenders.

First Caribbean junior championship

Make Top-Soil Out of Sub-Soil by working in **Hyper-Humus**

CULTIVATED PEAT HUMUS
The Organic Soil Improver

You can have velvet greens in spite of soil handicaps. Let us show you how raw sub-soil can be transformed into fertile top-soil for less than the cost of hauled-in topsoil.

Write us for Special
Bulletin

"Make Top-Soil Out of
Sub-Soil"



Ask your supply dealer for **HYPER-HUMUS**

HYPER-HUMUS COMPANY

Box G

Newton, New Jersey

WORRIED ABOUT "BALLOONING" MAINTENANCE COSTS?



A Royer Compost Mixer will help bring them down. This labor saving machine reduces the time needed for manual preparation of compost and top dressing by as much as 89%. Expensive, hard to get man-hours can be spent on other essential golf course maintenance.

Further, the top dressing prepared with a Royer is perfectly mixed and shredded, finely granulated, completely aerated and free of all trash. Spreads quickly and evenly, furnishing food to hungry greens.

Many sizes available in electric motor, gasoline engine or belt-to-tractor drives. Write for Bulletin 46 giving complete details.



ROYER FOUNDRY & MACHINE CO.
171 PRINGLE ST., KINGSTON, PA.

Rutledge "LIGHTWEIGHT"



**Floats Like
a Feather**

At last — a cart where the bag load is centrally balanced. Handle adjustable to owner's height. Made for regular or compartment bag. Baked enameled metal body. 10" ball bearing wheels, rubber tires. Occupies small space. Comes knocked down in compact box. Easy to assemble — only three parts. **\$19.95**

CADDY SAVER



Rolls when Closed...
Never has to be
Carried!

Best cart value you can get. Has a special new ratchet control that holds handle firmly in any position — it cannot slip. Takes any style bag. Lightweight but strong. Open or closed, it's easy to push or pull anywhere. Fits club locker, car trunk, rear seat space. Ball bearing wheels with semi-pneumatic tires.

With 10" wheels **\$28.95**
With 12" wheels **32.95**

Beckley-Ralston STROKE SAVERS

Easiest of all clubs to play. More than 1,000,000 sold. Square grips, short shafts. For shots within 50 yards of the green where $\frac{2}{3}$ of the game is played. Putter 31", Approach Cleek 32", Chipper 33". Right or Left Hand. Each **\$9.95**

Send for Literature and Discounts

THE RUTLEDGE COMPANY

3337 Belmont Ave.

Chicago 18, Ill.

for boys under 18, at 54 holes, at Ft. Amador GC, Panama City, Pan., July 31-Aug. 2 . . . Lads from Panama, Jamaica, Guatemala, Colombia, Costa Rica, Panama, Canal Zone and other Caribbean countries competing . . . First four to be sent to U. S. Junior Chamber of Commerce international junior championship at University of Michigan course, Ann Arbor, Aug. 17-22.

Julesburg (Colo.) Junior Chamber of Commerce builds 9-hole course . . . Loveland, Colo., realtors considering building course as community attraction . . . New 9-hole semi-public course opened at Berwick, Pa. . . It is Briar Heights course near Briar Creek . . . Owned by Mr. and Mrs. Percy Wilson.

Golfers in western section of Birmingham, Ala., urge city commissioners to build munny course at Roberts Field . . . Grosbeck Park, Lansing, Mich., new munny clubhouse opened . . . Eddie Ashford heads organization to build course at Athens, Ala. . . Detroit (Mich.) munny course pros, headed by Lou Powers, conduct big junior golf school, Tuesdays and Fridays, for three weeks, finishing with city-wide junior championship . . . Pro-

Shine?

Sure! You need a clean club for a clean shot.

LEWIS Golf Club Cleaner



This extra special service can make an extra special friend on any course. "Shines" the golfers' clubs in a jiffy with quick-and-easy automatic brush action. Can be coin operated, too, to pay for itself. Worry-free service for years and years and years. Add a big measure of pleasure for your members or patrons . . . "shine" their clubs with the popular Lewis Golf Club Cleaner.

ASK FOR DEALER
DEMONSTRATION

G. B. LEWIS CO. WATERTOWN, WISCONSIN