

**245 WANT POWERS SAFETY SHOWERS
AND ONE WANTS A BATHTUB**



**They forget they didn't make pars—
when they get Powers in their showers**

**Powers safety mixers assure players the perfect shower
that makes it a perfect day. No sleety shocks or
scalding surges to upset them.**

Powers Thermostatic Shower Mixers are *safe*, because they make dangerous extremes in temperature impossible; *comfortable* because the temperature stays constant wherever set; *economical* because they do the job quickly without wasting hot or cold water.

Keep your players happy and relaxed with

Powers mixers — and protected against shower water accidents. Just one accident might cost your club many times the amount required to equip all your showers with Powers.

Use the coupon below to get Circular H48 with its valuable information on modernizing your showers.

NOT THIS

OR THIS

BUT THIS



THE POWERS REGULATOR COMPANY
3400 Oakton Street, Skokie, Illinois

- Please send Circular H48 and prices
- Have an engineer call

Name _____ TITLE _____

Club _____

Address _____ BTG _____

**The most you'll
ever get out of
a golf ball**

**has been packed
into the great**

**NEW Golfcraft
"250"**

GOLF BALL

*It's coming your way
for better play - soon!*

GOLFCRAFT, INC.
Escondido, Calif.

ington dist. with Middle Atlantic PGA urging a handicapping system to reduce peculiar happenings in am-pro events.

What would increase autumn play at many clubs is waiving lost ball rule . . . When leaves cover balls that may be on fairways or narrowly into the rough a lot of players quit until spring . . . They hesitate to make their own rules . . . The clubs should make an autumn rule for them, and there'd be as much equity to an autumn lost ball rule as there is to "winter rules" in most cases . . . The autumn rule wouldn't be official to the USGA but neither is the winter rule . . . There were no trees on the Scotch courses where rules of golf originated . . . An autumn lost ball rule would encourage more play.

Scholarship prize fund of National Caddy Assn. increased from \$2,750 to \$5,250 this year so each of quarter-finalists received at least a one-year university scholarship . . . Carl Ruebelman, owner of Indianwood GC, Lake Orion, Mich., to have clubhouse wing recently destroyed by \$100,000 fire rebuilt for spring opening . . . Air conditioning of clubhouses, especially dining rooms, on many club winter construction programs.

Liquor consumption nationally off about 7 per cent but club managers generally report bar sales up for season . . . Maj. Nevin H. Gibson, Batesburg, S. C., soliciting pre-



**SKINNER
SYSTEM
OF IRRIGATION**

The SKINNER IRRIGATION COMPANY

415 East Canal Street, Troy, Ohio

**Turf Experts
know...
SKINNER
irrigation
equipment
IS BEST!**

Quality equipment . . . for every watering requirement . . . individual units or complete systems. Uniform coverage . . . dependable performance . . . long life. All parts are brass, bronze, or stainless steel and are replaceable. Write today for details.



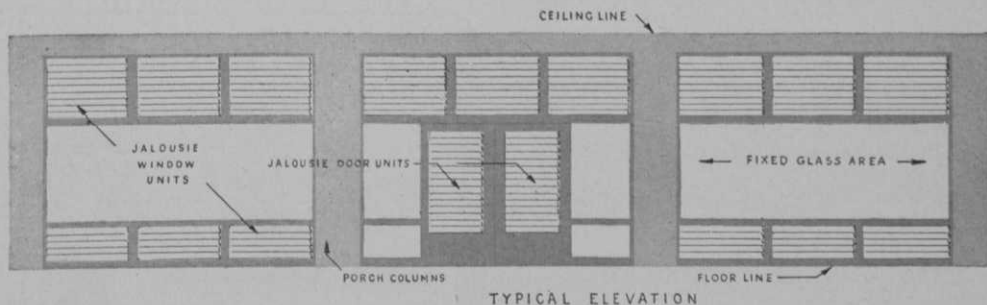
Pioneer and leader in irrigation for nearly half a century

at Inverness Club

TOLEDO, OHIO



JALOUSIE WINDOWS AND DOORS



*Mr. H. M. Lewis, General Manager of the Inverness Club, reports an amazing increase of patronage in this newly decorated and Jalousie equipped club restaurant.

The pleasant dining-room at Inverness overlooking the broad expanse of fairways is now a most delightful place with a new facade of glass . . . walls with 65 units of Win-Dor Approved Jalousies above and below large picture windows . . . Walls that open making an outdoor room, inside. Yet, with convenient control they become weathertight in seconds. Here is a modern transformation of beauty and utility that would be welcome anywhere, especially when it can so easily change dingy, unattractive areas into glamorous places of greater utility and revenue.* Most old, wide verandas and porches like this can be enclosed for year round use and modernized almost overnight.

See our catalog in Sweet's or write direct for details and information.

Win-Dor Approved Jalousie windows are a product of the Casement Hardware Co., manufacturers of the Win-Dor Casement Window hardware famous for quality since 1906.

THE CASEMENT HARDWARE CO. • DEPT. M-10 • 612 NO. MICHIGAN AVE. • CHICAGO 11, ILL.

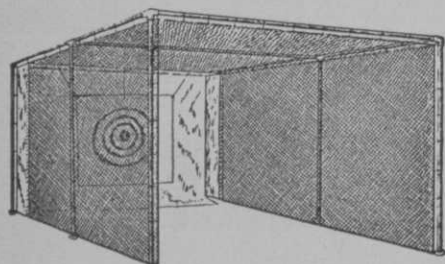
- Teaching or Practice
- Indoor or Outdoor

EDERER GOLF NETS

keep their swings in the groove the year around.

Pros, club officials and players will tell you that Ederer are golf's specialists in indoor and outdoor golf nets.

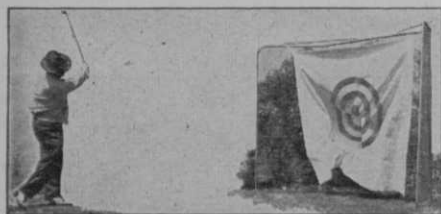
THE EDERER "INVINCIBLE"



"Invincible" — the full size Ederer golf net is the standard throughout golfdom for outdoor or indoor instruction and practice. Hundreds of clubs and pros have found the "Invincible" one of their most popular and profitable features in developing better and happier players.

If you are planning an indoor school let us tell you why EDERER "Invincible" is the standard school golf net.

THE EDERER "PORTABLE"



Sturdy, compact, lightweight—handles the full range of iron and wood shots. Ideal for limited space practice, indoor or outdoor.

Write for folder and price list.

R. J. EDERER COMPANY

Invincible Sports Nets

HOME OFFICE: 540 ORLEANS ST. • CHICAGO

publication orders for limited edition of 631 copies of his "A Century of Golf." . . . State and district amateur associations following USGA lead in getting championship sites and dates set well in advance . . . Alabama Amateur Golfers' Assn. to play 1953 championship in Mobile and 1954 event in Anniston.

Woodmont CC (Washington DC dist.) with its new clubhouse, 18-hole championship and 9-hole short course, featured in illustrated page in Montgomery (Md.) Record . . . Trillora, formerly the Long Island estate course of Guggenheim brothers, optioned for purchase to International Business Machines as course for its executives . . . Another 9 to be added to Trillora's present 9 . . . IBM's employees have one of the model industrial golf plants at Johnson City, N. Y.

Caddy dinners, prizes and tournaments in season's twilight at many clubs reminding kids that caddying is pretty good job . . . Our cautious, conservative guess is that caddy fees in U. S. this year will be more than \$17,000,000 . . . Caddy scholarships on Western Golf Assn. Chick Evans Foundation plan, awarded by Western, other district associations and National Caddy Assn. adding big pay to caddies . . . Bag cart competition and general economic tightening have made caddy services slightly easier

GOLF RANGES

MINIATURE
COURSES

GOLF COURSES



TEE-OFF MATS-CLUBS
GOLF BALLS-PUTTERS

We can furnish you
COMPLETELY

Prices and Details on Request

EASTERN GOLF CO.

2537 BOSTON RD. (RT. #1) Dept. A
BRONX 67, N. Y.



All-American
● Picnic Grill



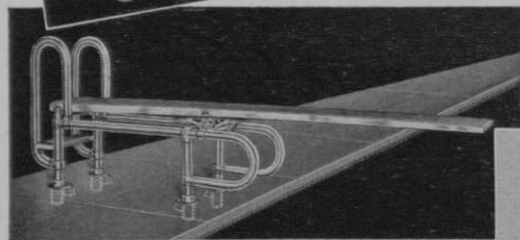
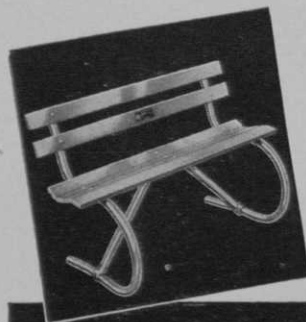
American Approved Combination Unit

You'll like

doing business with AMERICAN

Since 1911, the finest Park, Playground and Swimming Pool Equipment built, backed by a *Lifetime Guarantee* against defective materials or construction . . . low, nationally advertised prices which today average but little above pre-war 1941 . . . prompt, courteous and highly personalized service on both your problems and your orders . . . prompt, friendly adjustments to your complete satisfaction, marked by a sincere desire to merit an enviable reputation nearly half a century old . . . unsurpassed strength, durability, and safety . . .

These are but a few of the many reasons why we believe you will enjoy doing business with AMERICAN.



Above: American Streamlined Park Bench
American Official Regulation One-Meter Unit

AMERICAN
PLAYGROUND DEVICE CO.
ANDERSON, INDIANA

World's Largest Manufacturers of Fine
Playground & Swimming Pool Equipment

Write Today

**FOR CATALOGS AND SPECIAL LITERATURE
FEATURING AMERICAN APPROVED**

PLAYGROUND EQUIPMENT . . . SWIMMING POOL EQUIPMENT . . . ALL-AMERICAN PICNIC GRILLS
ALL-AMERICAN UNIFORM HANGERS . . . AMERICAN HEAVY DUTY CHECKING AND GYMNASIUM BASKETS
STEEL BASKET RACKS . . . AMERICAN REPAIR EQUIPMENT . . . AMERICAN HOME PLAY EQUIPMENT

Internationally Specified Internationally Approved

DOLGE

Tested Products For Maintenance Requirements

More than fifty years' experience, latest laboratory equipment and continual research is behind Dolge Tested Products. Whatever your maintenance problem (insecticides, disinfectants, deodorants, cleaners, floor finishes and ground materials) Dolge dependable products will serve you efficiently and economically.

ALTA-CO POWDER

For Athlete's Foot control.

BRITEWAY

All-purpose liquid soap cleaner.

KADOL

Concentrated liquid cleaner.

BALMASEPTIC

True deodorant liquid soap.

DEODOROMA

Deodorizing blocks. Three bracing scents, rose, new mown hay, ced-o-san.

TILEBRITE

Removes rust stains easily and quickly.

DOLCOROCK

A high gloss floor finish. Resistant to water.

DOLCOWAX

A long lasting floor finish that needs no polishing.

PERMAX

Insecticide spray with 5% DDT.

TINK

Clears clogged or sluggish drains.

F. & E.

The fast, pleasant disinfectant—deodorant.

SS WEED-KILLER

E.W.T. SELECTIVE WEED-KILLER (2-4-D).

Specific aids to your weed problems.

And many others—

This is only a partial list of dozens of Dolge products.

Write today for Dolge catalogue C.D.

It contains the solution to dozens of health and maintenance problems.

dependable
DOLGE
WESTPORT, CONNECTICUT

to get this year . . . Men on strike in some cities have picked up enough in caddy fees and tips to relieve serious financial situation at home . . . They've passed word to youngsters that caddying is very well paid work considering kind of work involved.

Peter Hay, veteran Pebble Beach pro, says comparisons between scoring by men and women stars is impossible unless women play from men's tees which women seldom do on tough, testing courses . . . Construction work begun on Harbor Investment Co. course near Santa Ana, Calif.

Nashville, Ark., group headed by Erice Darling, restoring 9-hole sand green course to play . . . What a godsend 2,4-D has been in getting abandoned courses restored to play with fairways in better weedless condition than they ever were before . . . W. F. Roundtrey, Virginia ornithologist, tells Norfolk (Va.) Dept. that proposed new golf course in Stumpy Lake region should protect area's present "unique" status as having "more bird life from the standpoint of species than you will find anywhere else."

Warren (O.) Chamber of Commerce leases Avalon course for 10 years with CofC giving city 7½ per cent of gross receipts and to put 7½ per cent in capital improvements. . . Previous CofC deal was 5 per cent of gross . . . For 1951 city got \$1,108 . . . Under previous CofC agreement course

BAG-SHAG

Doubles practice time. Shags, bags ball with single motion. No stoop!

a natural for pro shop selling

SIX MAJOR IMPROVEMENTS

1. Cast Aluminum Handle.
2. Plates — 24 gage steel.
3. Deeper furrows for canvas support.
4. Stronger canvas.
5. Harder metal in tube.
6. Double tool steel spines.

ALL PARTS REPLACEABLE

Retail price \$15

Sold through Pro Shop Only

Order direct from maker—

HOWARD CAPPS CO.
P.O. Box 1246
Richmond, Calif.

MEMBERS WANT FULLY SATISFYING SHOWER BATHING

This all clubmen know: that fatigue from work or play *can* be washed away and the feeling of fitness restored IF the shower is *completely* satisfying. To measure up to their wants the SHOWER HEAD must deliver a full spray, evenly distributed in an undistorted pattern, and directed as desired.

Management Wants Grati-
fied Members and MONEY SAVINGS

—BOTH ARE THE CONTRIBUTIONS OF

THE NEW SLOAN

Act-O-Matic

SHOWER HEAD

In this revolutionary new shower head you get the Desired Dozen Features:

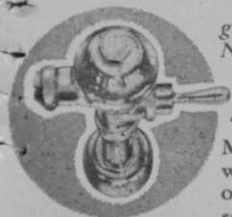
- 1 **Self-cleaning.** Patented automatic action thoroughly flushes the interior of shower head with each use.
- 2 **No clogging.** All clogging particles are automatically and completely discharged.
- 3 **Simple, reliable, long-lasting.** Only one moving part inside the solid brass, high chrome finished housing.
- 4 **Greatly improved spray pattern.** Cone-within-cone spray gives an evenly distributed shower.
- 5 **Fingertip volume control.** Foolproof volume control increases or decreases rate of water flow to suit bather.
- 6 **Spray direction adjustable.** Never-leak ball joint enables bather to direct spray as desired.
- 7 **No dripping.** New design principle prevents dripping after shower has been turned off.
- 8 **Water economy.** Exclusive design provides efficient bathing with big water savings.
- 9 **Fuel savings.** It costs money to heat and pump water; thus water economy means saving of costly fuel.
- 10 **Maintenance eliminated.** Since this shower head is always free from clogging and other faults it requires no servicing.
- 11 **Easily, quickly installed.** Equipped with connector that fits all standard shower arms on old or new installations.
- 12 **Vandal-proof model.** To prevent tampering or theft, a vandal-proof model is available at slight additional cost.

Write for illustrated folder containing diagrammatic view and full information on the unique New SLOAN Act-O-Matic SHOWER HEAD.

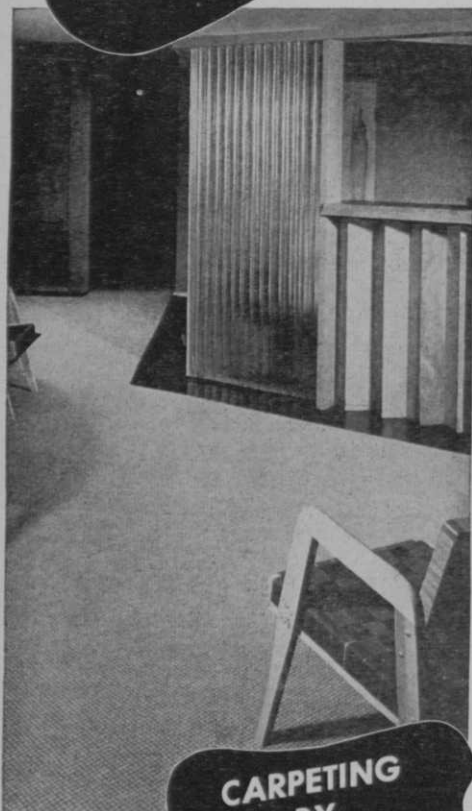
SLOAN VALVE COMPANY

4300 WEST LAKE STREET • CHICAGO 24 • ILLINOIS
Makers since 1906 of Flush Valves which are in world-wide use—in buildings of every type and on ships at sea. More Sloan Flush Valves are sold than all other makes combined.

This Shower Head is
AUTOMATICALLY
SELF-CLEANING
Each Time
it's Used



Made to order
FOR
GOLF CLUBS



CARPETING
BY
KLEARFLAX

Tightly woven
of long-wearing
virgin flax, scuff-
proof, beautiful in any room. Reversible, spike-
resisting, moth-proof, practically burn-proof,
and easy to clean. Adds distinction to any
interior. For address of nearest dealer write:

KLEARFLAX CARPETS
AND RUGS, DEPARTMENT G.,
DULUTH 7, MINNESOTA

was enlarged from 9 to 18 holes . . . Marsh Shiewe, leaving Ft. Wayne (Ind.) Journal-Gazette to go on Chicago Sun-Times sports staff, makes his farewell "Pin High" golf column a tribute to some builders of Ft. Wayne golf . . . Marsh said John Sonnenburg, pro at Ft. Wayne munny course, has done fine job starting kids in golf . . . Marsh also lauded Orv Brown, supt., Elks CC . . . Jim Turnesa during Ft. Wayne Open said he'd never played on a course for public play that was in as good condition as Brown had the Elks layout.

Great deal of remodeling work to be done on courses this fall and winter . . . Lot of steep climbs being eliminated . . . Old construction accountable for greens and tee trouble and unduly high maintenance costs also being corrected . . . Irving Klein, real estate broker of Lawrence (LI), N. Y. buys for syndicate 16,500 acre tract in Herkimer County for big resort . . . Course to be enlarged from 9 to 18 holes . . . Seattle, Wash., increasing munny green fees to \$1 week days and \$1.25 Saturdays, Sundays and holidays . . . Paul V. Brown, parks supt., says increase which becomes effective Jan. 1, brings charges in line with other Pacific Coast munny rates . . . Seattle to add 9 holes at Jackson Park.

Columbus, O., pros in a "Beat the Pro" event for charity at Alex Poli's and T. B. Devine's range . . . Each pro hits 5 balls at

Putts go down — Sales go up with
THE
PUTT-MASTER
Pendulum Putter

Putts are lined up accurately . . . they're not pushed or pulled . . . binocular sighting improves judgment of distance . . . ball is given over-spin . . . stroke and follow-thru are on the line . . . tendency to lift the head is reduced . . . even distribution of weight reduces putting lifts . . . same PUTT-MASTER serves either right- or left-handed players for putting or in trouble situations . . . Legal by USGA ruling . . . Solid aluminum head . . . True Temper shaft . . . top leather or All Weather grips.



These are features of the PUTT-MASTER Putter that make it sell sensationally well and work wonders for the high handicap player as well as the star. It's the biggest selling club since the flanged niblic. It's a "must" for pro shop and bound to be a LEADER IN CHRISTMAS GIFT selling.

Write or wire today for complete details of the PUTT-MASTER Pendulum Putter.

PUTT-MASTER
31 N. First St. PHOENIX, ARIZ.

Rutledge CARTS and CLUBS

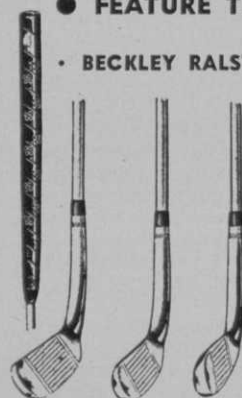
• FEATURE THEM AS GIFTS!

• BECKLEY RALSTON

STROKE SAVERS

"Easiest of all Clubs to Play". More than a million have been sold and there is a large and growing replacement market.

Famous for their square grips and short shafts, which give golfers the greatest possible directional accuracy for shots within 50 yards of the green where 2/3 of the game is played. Heads are triple plated chrome, grips perforated brown leather. Putter 31", Approach Cleek 32", Chipper 33". Right or



left hand \$9⁹⁵ each

• WALLOPER

The fastest selling special club ever developed. Takes the place of woods for players who have difficulty with woods. Has the lie of an iron with the bulk and power of a wood. Comes with standard round grip. 39" long. Right \$12⁵⁰ hand only

• TRAPSHOOTER - NIBLICK

A two-purpose club, scientifically designed to play difficult lies out of sand traps, heavy rough and long grass. Has deep head and

practically no sole. Standard round grip. 35" long. Right hand only



• RUTLEDGE PUTTER

When a golfer sees it, he wants to try it — then you can't take it away from him. It gets the putts down and brings confidence to golfers who constantly change putters and putting styles. The Rutledge gives un-failing directional accuracy. Square

grip. Right or left hand. \$9⁹⁵
34" long



\$10⁹⁵

• THE NEW COOLIE

At last — here's a cart that floats like a feather, because the bag load is centrally balanced. Handle adjustable to owner's height. For regular or compartment bag. Baked enameled metal body. 10" ball bearing wheels, rubber tires. Occupies small space — comes knocked down in compact box, suitable to parcel post.

Only 3 parts —
Easy to
Assemble
\$19⁹⁵



• RUTLEDGE CADDY SAVER

With 10" wheels
\$28⁹⁵

With 12" wheels
\$32⁹⁵



The best cart value today. Has a special new ratchet control that holds handle firmly in any position — it cannot slip. Accommodates any style bag. Lightweight but strong. Open or closed, it's easy to push or pull anywhere. Fits club locker, car trunk, rear seat space. Made of high strength tubing and aluminum bar stock. Ball bearing wheels with semi-pneumatic tires.

Send for Literature and Discounts
on the entire Rutledge Line

THE RUTLEDGE COMPANY

3337 Belmont Ave., Chicago 18, Ill.

K-KART COLLAPSIBLE GOLF BAG CARRIER

WITH
THE
NEW REST
-PERIOD
SEAT!



THE
QUALITY
KART

The new ingeniously designed K-KART seat automatically locks the wheel to prevent rolling. The golfer can play more and better golf. Will support 200 pounds easily. Weight is transferred through the wheel to the ground. If desired, seat can be lifted off for storage purposes. K-KART is beautifully designed. It's streamlined, lightweight and sturdily built. Lightweight aluminum and steel construction. Ballbearing wheels with semi-pneumatic tires. Universal bracket fits any type bag.

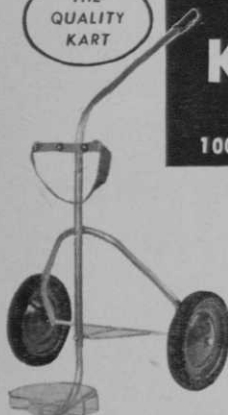
Shipped partially disassembled to save on parcel post

RETAIL PRICES F.O.B. CHICAGO

K-10 — 10 inch wheel.....	\$27.50
K-12 — 12 inch wheel.....	29.50
Seat.....	\$7.50

Write for dealer proposition.

THE
QUALITY
KART



RENTAL K-KART

MAKE
100%-500% PROFIT

K-KARTS pay for themselves quickly. Professionals everywhere are making big money renting golf bag carriers.

Made of strong lightweight steel and aluminum. Interchangeable parts. Low upkeep. Easy to make your own repairs. Steel basket is easily replaced.

Perfect balance. Weighs only 10 pounds. No stooping necessary for player.

10 or 12 inch ball-bearing wheels, factory packed with water and heat resisting grease. Tires are semi-pneumatic . . . easy rolling.

ALSO AVAILABLE WITH DETACHABLE HANDLE

Now you can have complete control . . . a check-out system that assures fee payment before K-KART leaves your shop. The detachable handle is a new K-KART feature.

Order Your Supply
TODAY!

2358 Clybourn Ave.
Chicago 14, Ill.

KUNKEL INDUSTRIES

105 yd. practice green . . . Scores are made according to balls resting in circles on green . . . Contestants pay 50 cents to charity, get 5 balls and have chances for 15 prizes . . . Dickinson (N.D.) considering building new many course and using present course for new residential, school and park area . . . Pennsylvania State college buys farm as site for 36-hole layout to replace present 18 on campus . . . With high rating Bert Musser and his team-mates have given Penn State in turf research the new courses should be model jobs.

Merced (Calif.) to spend \$40,000 enlarging its 9 to 18 . . . Wearing of shorts by so many younger golfers this summer gave pro shops pretty fair sales of insect-discouraging liquids and ointments . . . Tropic weather also had some of the old guys and dolls wearing shorts and drawing flies . . . Al Tull designs new 9-hole Pine Tree CC course at Danbury, Conn., for Seymour E. Powers, Brookfield Center, Conn., and Julius Lipton, NYC, owners . . . Course to be in play next spring . . . Memberships \$300.

Earl Mason from Bloomington (Ill.) CC to become mgr., Shawnee CC, Topeka, Ks. . . Floyd Currier, formerly Shawnee mgr., opening a sports goods store . . . Meadowbrook CC, Tulsa, Okla., which at present has no course, is selling clubhouse, buying new property and intends to build one of southwest's finest courses . . . Charles Goodall is Meadowbrook pres.

GOODWIN
FLANGE-WRAP GRIPS
(Patents Pending)
Tension Wound for
Greater Distance!

DIMPLED
DYNAMIC

The new improved method of application has now made it possible for even greater profits for the professional. When ordering your 1952 clubs demand the

Finest "Feel" in Golf

C.S.I. Sales Company

Solon Center Bldg. • Solon, Ohio
Exec. Office: 536 Terminal Tower Cleveland 13, Ohio