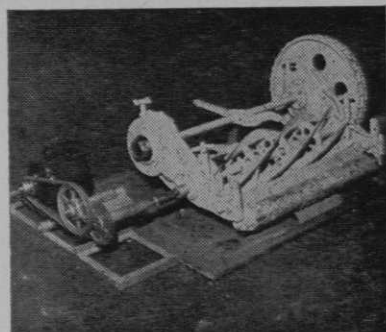


leigh Coal and Coke Co. for a reported \$125,000. Brice Sweet who grew up with Sam Snead at The Homestead GC at Hot Springs where Brice's dad was greenkeeper is pro-greenkeeper at Black Knight . . . Lee Sechrest retires as golf course supt. at Hillcrest CC, Kansas City, Mo. to be succeeded by Ray Whitlow . . . Dr. Marvin H. Ferguson, Agronomist in charge of research for the USGA Green Section, has taken a year's leave of absence beginning Feb. 19, 1951, to assume new duties as Chief of Grounds Maintenance and Erosion Control Section of the Military Air Transport Service with headquarters at Andrews Air Force Base, Wash., D. C.

Geoffrey Cornish, Univ. of Mass. Instructor of Agrostology, co-author with Miss Carol Gawthrop of the Univ. of illustrated guide for home owners on building and maintaining good lawns . . . Published by the Authentic Pub. Co., 145 West 57th St., N. Y. Directions are presented in the form of sketches and captions . . . available on newsstands about April 1.

John Duncan Dunn, veteran pro, author and teacher, died at his home in Los Angeles Jan. 19, aged 77 . . . he was one of the first British professionals who came to this country in the early nineties and was active in the development of golf instruction. Dunn designed a number of golf courses in the United States and foreign

## ATLAS LAWN MOWER LAPPING MACHINE



A compact, light-weight machine for lapping all models of Hand, Power and Gang Mowers! May be easily used on work bench or floor, eliminating the lifting of heavy mowers. The simple height adjustment for the reel shaft may be used from 4 1/2" to 10 3/4". Equipped with several attachments to fit different reel shafts. Metal blocks for rollers. Steel stands to support the mower.

### FULLY GUARANTEED

List Price, With Motor . . . . . \$61.50

List Price, Without Motor . . . . . 39.00

Write for Bulletin.

**Atlas Lawn Equipment Co.**

9761 Olive Street Road

St. Louis 24, Missouri

# Build Velvet-Smooth Greens

Members take pride in Link-built turf. Now . . . on our NEW CLUB PAYMENT PLAN, buy these pure-strain grasses on small monthly payments. The most beautiful, velvet-smooth grass in the world . . . yours . . . in this new, easy way.



## ALBERT A. LINKOGEL

noted developer of important grass strains will advise you on grass problems. Write him in care of LINK NURSERIES, Inc.

# LINK'S NURSERY, INC.

**the TOPS in TURF!**

The Convenient  
**CLUB PLAN Way!**

**U3 BERMUDA** (Delivery May 15)

**ARLINGTON BENT GRASS** (Delivery in April)

LINK'S NURSERY, INC.  
Route No. 1, Conway Road  
Clayton 24, Missouri

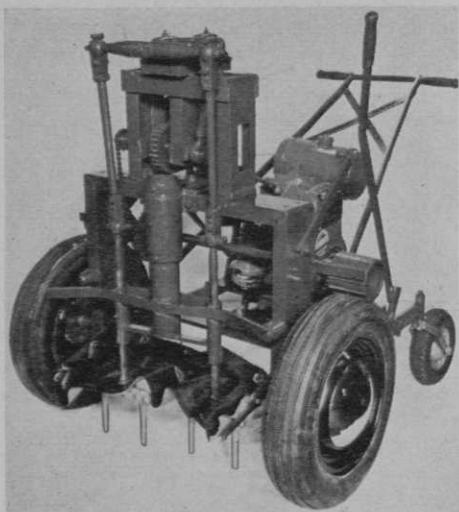
Send prices on \_\_\_\_\_

Also send information on the New Club Payment Plan.

Name \_\_\_\_\_

Address \_\_\_\_\_

City \_\_\_\_\_ State \_\_\_\_\_



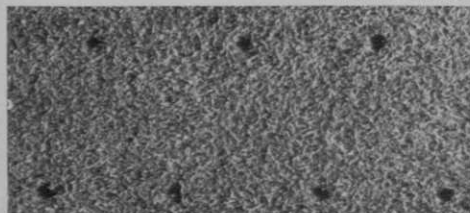
## THE FERGUSON NIGHT CRAWLER GREEN AERIFYING MACHINE

We find that greenkeepers have a mind of their own. They prefer the Ferguson Night Crawler for these 10 big reasons:

1. No damage to putting surface. The Night Crawler can be used any time.
2. More holes per square foot.
3. Deeper penetration under all conditions.
4. Fast (18 greens in two days)
5. Clean cutting tines will not transplant crabgrass and Poa Annua.
6. Turns around on green while in operation.
7. No mechanical clutches — cam operated from one lever.
8. Climbs steep banks and approaches.
9. Operates easily — not a man-killer.
10. Straight-in straight-out aerification.

Don't punish your greens — get a Night Crawler. Don't take our word — compare the work or ask the man who owns one.

PATENT PENDING



Dealers in most sections of the U.S. and Can.

Manufactured by  
**By FERGUSON & SONS.**  
TURF PRODUCTS DIVISION  
EAU CLAIRE, MICHIGAN

countries and published several books of instruction and a large number of articles in golf magazines. His father, Tom Dunn, was a noted designer of courses in Europe for many years . . . Grandfather, Willie, and great uncle, Jamie, were the celebrated twins from Musselburgh, Scotland, who competed with Allan Robertson and Tom Morris in 1849, in a 20-round match . . . maternal grandfather was John Gourlay, noted maker of feather balls. Tom Dunn's brother, Willie, uncle of John Duncan Dunn, was the first open champion in the United States, in 1894.

## "Perfect Golf Course" Always Will Be a Mirage

By JOHN ANDERSON

Supt., The Country Club of Virginia, Richmond, Va.

To my mind the perfect golf course has yet to be built. The perfect golf course from the architect's point of view may not be perfect for the greenkeeper, as to economy in maintenance or perfection in equipment. What both the architect and the greenkeeper might consider a perfect golf course is very likely to be criticized from the players' angle. . . . That might be the perfect golf course for the top notch player is not likely to be perfect for the average club member who kicks in a good-

**"QUALITY" POLES**

**Buy STANDARD Golf Course EQUIPMENT**

**GIVE 'EM MORE FUN IN '51**

**"GOLFBALL" WASHERS**

**"ONE-PIECE" PUTTING CUPS**

**"TRUE-VUE" FAST COLOR FLAGS**

**4**

**"CUTS-TRUE" HOLE CUTTERS**

**GIVE 'EM MORE FUN IN '51**  
Bulletin "51" showing the complete Standard line is yours for the asking.  
WRITE FOR IT TODAY.

**STANDARD MFG. CO.**  
Box G Cedar Falls, Iowa

ly share of the expenses to maintain it.

I think of the perfect course with a long No. 1 hole which looks very difficult but actually is not; straight, if possible, onto a goodly sized 6,000 sq. ft. green, not too heavily trapped or bunkered but built so that the approach can be played with freedom, with open country at background for at least 100 feet. This is meant for player confidence at the start of the round. All other holes would, of course, have their special characteristics, but I think the first hole is very important.

Tees should be half the size of the green at least and if elevated, the slopes should be drawn out for tractor unit maintenance.

All fairways would be smooth so that no scalping of turf could take place with mowing machines. No drains would be noticeable, for on the perfect course the backfill would have settled before seeding or turfing.

If it was necessary, in order to obtain a special objective, to have bunkers or sand traps on any fairway they should be placed so that the high scorer would not be unduly penalized and the low scorer favored. Banks and mounds would be drawn out so that they would be mowed or fertilized and maintained exactly the same as the fairways.



## You can't miss! SEED WITH *Scott's* TMREG

Its quality, high germination and resulting texture produce turf perfection which is enjoyed by over a fourth of the nation's leading clubs. To eliminate weeds use Scott's 4-XD. It's a new dry applied control . . . safer, faster. Write for our recommendations and prices today.

O M *Scott* & SONS CO  
Marysville, Ohio  
also Palo Alto, California

*Scott's* ARE FAMOUS  
FOR CHAMPIONSHIP TURF

## AN EASY WAY TO CLEAN SHOWER ROOMS

and swimming  
pools without hard  
rubbing. Simply sprinkle

  
"Bull Frog"  
**SAF-T-KLENZ**

powder on damp surface, mop lightly, and flush with clear water.  
\*Removes rust stains, lime deposits, soap, oil, body grease, and algae formation. \*Minimizes conditions that breed and spread infectious germs. \*Harmless to hands, clothing, floors, drains.  
\*Odorless. There's nothing else like it! It works like a charm even where hard rubbing with ordinary cleaners has failed.

Write for liberal free sample. Try for 30 days. If not more than satisfied, we will cancel the invoice. You won't even be asked to return the unused portion.



**BERMAN CHEMICAL COMPANY**  
709 Superior Street • Toledo 4, Ohio

- Please send free sample of Saf-T-Klenz.  
 Please send quantity prices.

NAME \_\_\_\_\_  
FIRM \_\_\_\_\_  
STREET \_\_\_\_\_  
CITY & STATE \_\_\_\_\_

DISTRIBUTOR INQUIRIES INVITED!

# Par-D-Lux



*America's  
Finest  
Golf Glove*

Full-hand  
protection —  
yet as light  
and  
comfortable  
as bare hands!

## It's Par-D-Lux again for '51

Yes — in '51 Par-D-Lux will again be the biggest seller in your shop! Expertly tailored from the world's finest glove leathers combined with smart, bright-colored nylon backs.

Order now! Put them on display —  
they'll sell on sight!

**K. L. BURGETT CO., Peoria, Ill.**

The greens on the perfect course would range in size from 5,500 to 6,500 sq. feet according to the character of the hole. They should have sufficient run off for excess water—about 4" per 100 ft. This is important for if excess water can't move off the green rapidly, conditions are sure to occur that will spoil the perfect course. If club members and guests can stand on the first tee and look over a goodly portion of the property and it is in a picturesque setting with a mixture of evergreen and deciduous trees and shrubs then they, too, might think here is the perfect golf course.

Any course that could lay claim to being perfect should have adequate equipment storage facilities, a repair shop well equipped with repair machinery and tools for same, also a soil and fertilizer shed possibly combined with equipment building. This should be well constructed and weather-proofed so that fertilizer, top-dressing, etc. could be stored dry and so that men could work comfortably during inclement weather. This is important as are sanitary facilities—toilets and wash basins. There also, the superintendent should have an office where he can keep adequate records, maintenance data, etc.

If a course is to be rated as perfect it should have an adequate water system for



**Hotze Golf  
Luggage**



**Kountry Klub  
Sportswear**



NY—325-S

**HENRY HOTZE & SONS COMPANY • 506 North Fourth Street • ST. LOUIS 2, MO.**

greens, tees and fairways. If it is a system that calls for hose, all outlets should be under the surface in a receptacle that could hold all hose required and covered over with a cover so that equipment can be driven over it if necessary.

If we should happen to acquire all these features there will still be many grumps and kicks. The rough will be too high. Some days the greens will be too slippery or the workmen did not get out of the way in time and bothered me so I muffed a shot. The perfect course, eh? If a course could be perfect the player wouldn't have anything to kick but himself and he'd never consider that playing under perfect conditions.

### Nut Grass Eradication With Methyl Bromide

Nut grass is a bad weed on many golf courses and other turf areas in the South. It is not easily killed because of the underground bulblet. Some have used heavy doses of ammonium sulfate with fair success.

A method for killing nut grass with methyl bromide fumigant devised by O. A. Leonard of the Mississippi Agricultural Experiment Station is outlined in Down to Earth, Volume 6, No. 1 (Summer 1950)



### PHILLIPS GOLF SPIKES

Adjustable

For Easier Walking — Firmer Grip. Bearing at extreme outer edge.  $\frac{7}{8}$  Disc Area.

### PHILLIPS

### Golf Spike WRENCH

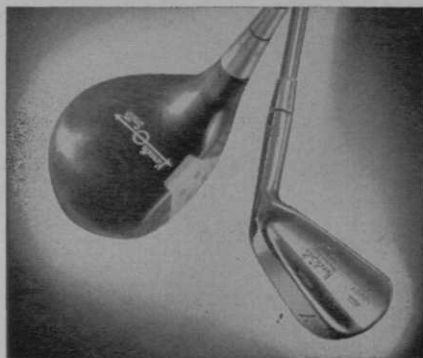
PAT. APP. FOR



EXTRA  
PINS

LOCK NUT  
FOR REFILLS

F. C. PHILLIPS, INC.  
STOUGHTON, MASS.



## Better Clubs Make a Better Golfer

Seventy per cent of men playing Kenneth Smith clubs shoot in the 70s. The national average — all makes of clubs — is only 2 1/2% (according to an impartial, national survey). The reason is easy to discover — Kenneth Smith clubs are handmade to fit your customer's measurements, scientifically matched and all clubs in a set identically swing-balanced. No other clubs are so matched and so balanced.

**Pros: Write for new booklet that helps you sell Kenneth Smith clubs.**

Give Your Members Better Service with

## Ken SHOP SUPPLIES

Golf Club Lacquer

Form-a-Coat

Grip Conditioner

Adhesive

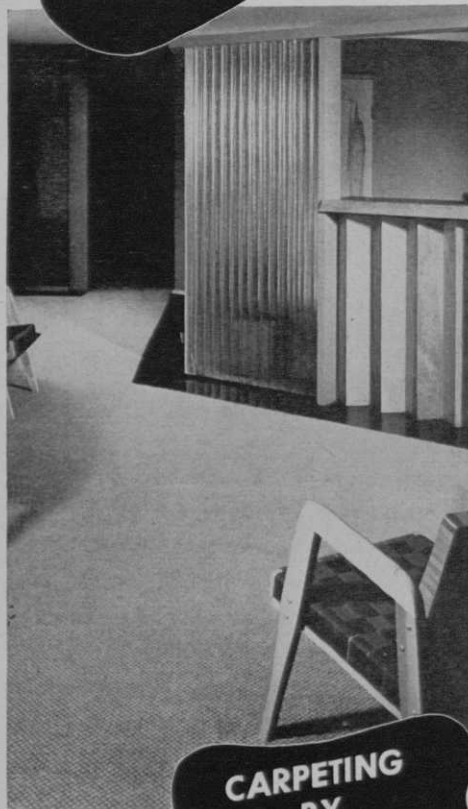
Buffing Supplies

Write for handy Supply Order Form

**Kenneth Smith**  
**GOLF CLUBS**  
*Hand made to fit You*  
BOX 41, KANSAS CITY 10, MO.



*Made to order*  
FOR  
**GOLF CLUBS**



**CARPETING  
BY  
KLEARFLAX**

Tightly woven of long-wearing virgin flax, scuff-proof, beautiful in any room. Reversible, spike-resisting, moth-proof, practically burn-proof, and easy to clean. Adds distinction to any interior. For address of nearest dealer write:

**KLEARFLAX** CARPETS  
AND RUGS, DEPARTMENT G.,  
DULUTH 7, MINNESOTA

page 13. The methyl bromide kills all vegetation. Its use is feasible and desirable where one of the newer finer leaved selections of bermuda grass is to be planted on putting greens.

The recommended procedure is to work the soil to a depth of 10 inches because best results are obtained when the soil is porous. A support for the gas-proof cover is constructed lengthwise of the area, by placing 2 x 4 timbers in boxes. (Sisal Kraft paper obtainable from any building supply firm makes a satisfactory cover.) The edges are sealed by weighting down with soil. Methyl bromide is released through a piece of plastic tubing and introduced into an evaporating pan placed under the tent-like cover.

In winter time tests, with the soil wet and at 49° F, methyl bromide was applied at the rate of one, two and four pounds per 100 square feet. The area remained covered for 65 hours. The one pound rate proved adequate for complete eradication of nut grass where the soil had been spaded. Even four pounds was almost completely ineffective when applied to undisturbed soil.

In the spring, flower beds were fumigated after rototilling. Some beds were fumigated later than others, and after several heavy rains. Complete control of nut

## **NORTHERN GOLF BALL CO.**

3441 N. Claremont Ave.  
Chicago 18, Ill.

Distributor of

### **"THE TURF KING"**

**GENUINE TAMPICO BALL  
HITTING & MAT BRUSH**

Designed for use at all  
tee-off points on Golf  
Courses, Schools or  
Driving Ranges.

Ideal for Wood or Iron Play

also

The

### **"CALIFORNIA YELLO JACKET"**

Driving Range

and

Miniature Course  
Golf Ball

Permanent Color

"CLEAR thru the COVER"

grass was obtained with  $\frac{3}{4}$  pounds methyl bromide per 100 square feet, in the bed fumigated immediately after roto-tilling. Control was not complete in beds fumigated after rains which caused the soil to settle.

In July an experiment was conducted to compare the exposure period and the rate of application. Methyl bromide was used at  $\frac{1}{4}$ ,  $\frac{1}{2}$  and 1 pound per 100 square feet. The soil remained covered for 24 to 48 hours. Control was complete with  $\frac{1}{2}$  pound for 48 hours and with 1 pound for either 24 or 48 hours.

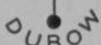
Other tests showed that spading the soil is not necessary for good control when subsoil moisture is low.

Generally speaking, it was suggested that the soil be freshly plowed, roto-tilled or spaded; that 1 pound of gas be released per 100 square feet and exposed 24 hours in summer and 48 hours in winter, with soil temperature above 50° F. It is safe to plant or seed two to three days after the cover is removed.

**Editor's Note:** Methyl bromide is being used in Oklahoma and Texas to kill bermuda grass in the aprons and around the edges of bent grass greens. The rate is 1 pound to 100 square feet with an exposure time of 24 hours. Grass is seeded 24 hours later.



TRADEMARK



**DUBOW**

**Symbol of Golf Club Excellence**

JOCK HUTCHISON and BETTY HICKS  
PRECISION-BUILT GOLF CLUBS  
GRADUATED GOOSE-NECK IRONS  
LAMINATED and PERSIMMON WOODS  
COMPLETELY NEW

and  
DISTINCTIVELY STYLED  
for  
MEN and WOMEN GOLFERS

also  
Makers of the New  
**DUBOW H. C. — SUPER 803 COVER  
GOLF BALL**

The finest Golf Ball that can be made  
Write for descriptive folder and price list  
**J. A. DUBOW SPORTING GOODS CORP.**  
1905-13 Milwaukee Ave. Chicago 4, Ill.

THE LIGHTWEIGHT  
**BALANCED  
GOLF BAG**  
FOR 1951

**OVER 500,000 IN USE**  
The most popular bag ever made



**NEW  
OVAL  
SHAPE**



**BALANCED**

**15 CLUB CAPACITY  
STANDARD MODEL**

The one and only full size golf bag that is lightweight and balanced for easy carrying. Large zipper pocket. Adjustable padded shoulder strap. Made of best quality duck and materials throughout. COLOR — TAN ONLY. PRICE — \$3.60 EACH, F.O.B. CHICAGO. MINIMUM SHIPMENTS ONE-HALF DOZEN.

For the golfers who object to excess weight. A cart is unnecessary



**HOLDS  
9 CLUBS**



Each in a separate pocket

**BALANCED**

**SLIM-JIM MODEL**

The perfect bag for the golfer who plays with nine clubs. Zipper ball pocket. Adjustable padded shoulder strap. Made of best quality duck and materials throughout. COLOR — TAN ONLY. PRICE — \$3.90 EACH, F.O.B. CHICAGO. MINIMUM SHIPMENTS ONE-HALF DOZEN.

ORDER TODAY FROM  
**BALANCED GOLF BAG**

A Division of M-K Enterprises Inc.  
1401 W. North Ave. Chicago 22, Ill.

"There's dirty work  
afoot", says **SCRUBBY**

... but who cares? I'll give 'em  
the quick, easy **PUSH BUTTON  
BEAUTY TREATMENT** with

**LEWIS**

**Golf Club  
CLEANING  
MACHINE**

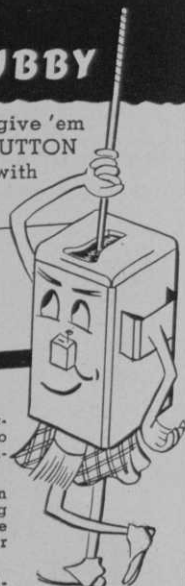
• New 1951 Faster Brush Action. (Conversion pulleys to speed up 1950 models available free)

• Cleans woods or irons in seconds without hand rubbing or scrubbing. Anyone can use it. Can be coin operated for public courses.

• Built for years of dependable service with a minimum of attention.

ASK FOR DEALER DEMONSTRATION

**G. B. LEWIS CO.**  
WATERTOWN • WISCONSIN



**KEEPS  
CLUBS  
CLEAN**

## Study Shows Effect of Height of Cut on Roll of Golf Ball

In the August 1949 issue of *GOLF'DOM*, Robert Trent Jones reported a test on the flight and roll of drives of The National Open. The average roll was 28.3 yards for his conditions.

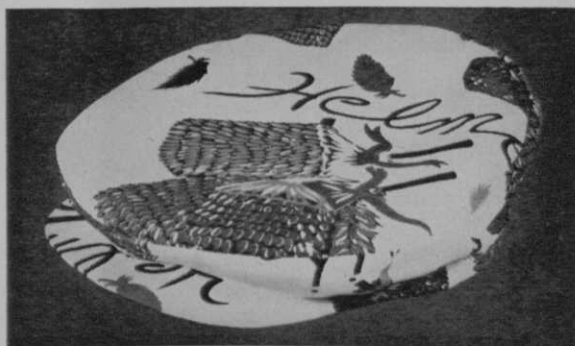
With a uniform turf, soil, slope and soil moisture conditions of the experimental fairway turf plots at Michigan State College it was possible to measure the effect of three different heights of cut on the roll of golf balls. Olie Clark, formerly professional at the Country Club of Lansing, Michigan, made straight pitch and roll shots so that a flight of 30 feet was secured before roll began. The uniformity of the resulting rolls indicated that for each height of cut there was a rather specific resistance to ball roll.

### Roll of Golf Ball at Different Heights of Cut

Height of cutting	Average roll in feet	
	Fescue	Bluegrass
½ inch	68	69
1 inch	45	47
1½ inch	28	29

The 1½ inch cut turf appeared to wrap around the ball and reduced the roll very definitely, while the low-cut turf provided

fits  
every  
golfer!



## THE COLORFUL HAWAIIAN GOLF CAP BY *Flip-It*

A flip of the wrist enables this unusual Hawaiian Golf Cap to fit every head size from 6¾ to 7¾. Cool and comfortable, it's handsomely styled of silky, lightweight fabric in authentic Hawaiian patterns. 4 assorted colors and patterns to the dozen. A honoLULU of a seller at \$16.50 per doz.

Terms: 2/10 E.O.M.

For your complete catalogue  
of Flip-It sport hats & caps, write:

*Flip-It* inc. 23 Waverly Place, New York, N. Y.



little cushion for the ball or resistance to its forward motion. Although there is considerable difference in these rolling distances it is felt that the height of cutting would be unimportant on fairways as the bounce of a properly driven ball would reduce this comparative holding effect. When the better ground cover and the higher support of the ball on bluegrass and fescue turf are considered for the cuts above one-half inch, the higher cuts are favored over the one-half inch.

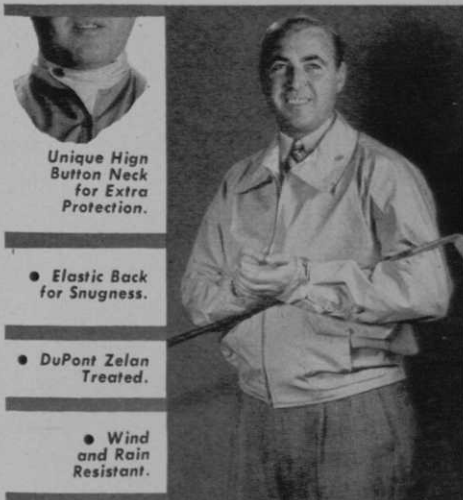
### Ferguson Takes Year's Leave from USGA Green Section

Dr. Marvin H. Ferguson, Agronomist in Charge of Research for the United States Golf Association Green Section, has taken a year's leave of absence beginning February 19, 1951, to assume his duties as Chief of Grounds Maintenance and Erosion Control Section of the Military Air Transport Service, with headquarters at Andrews Air Force Base, Washington, D. C.

Dr. Ferguson's duties will be to visit MATS bases and to inspect agronomic and horticultural features, including golf courses; to study problems and make recommendations and also to pass on final plans. One of his first assignments will be to visit and inspect the base in Bermuda.

# ANNOUNCING

## The Original JERRY GLYNN Reversible Golf Jackets BY WHITEWATER



Unique High Button Neck for Extra Protection.

• Elastic Back for Snuggness.

• DuPont Zelan Treated.

• Wind and Rain Resistant.

### IN NEW COLORS, PATTERNS

For years, golf pro Jerry Glynn has championed better golf wear. The JERRY GLYNN JACKET is his design for extra comfort, free action—for golfing pleasure. It features a new wonderfully comfortable non-binding "Shoulder Swing" Sleeve design that avoids hand or forearm interference.

The New jacket is made of rich 2x3 ply fine combed Pima yarns, mercerized and Zelan treated—in two-toned colors of Putty to Cream, and Dartmouth Green to Putty—with reversible heavy type zipper that's corded on both sides—it's snag proof. Has full box-pleat patch pockets on the outside with tee holders on right side under flap, and slit pockets inside.

Order your top-value JERRY GLYNN JACKETS now from nearby distributors listed. Sizes: Small, Medium, Large and Extra-Large. Retailers profitably at \$25.00.

- Stan Thempson Golf Club, 275 S Lacienea Blvd. Beverly Hills, Calif.
- Cliff Castle & Co., 1226 S. Hope St. Los Angeles, Calif.
- Denver Golf & Tennis Co., 1807 Welton St. Denver, Colo.
- Howard Scoggins Golf Co., Dunedin, Fla.
- Jackman Sportswear Co., 6332 W. Roosevelt Rd. Oak Park, Ill.
- Kountry Klub Sportswear, Inc., 506 N. 4th St. St. Louis 2, Mo.
- Mayflower Medalist, Ltd., 307 - 5th Ave. New York 16, N. Y.
- Coleman Golf Co., 30 Fernando St. Pittsburgh, Pa.
- Pro Golf Sales Co., 167 Third St. Fond du Lac, Wis.

## NEW K-KART RENTAL MODEL WITH DETACHABLE HANDLE

Now you can have complete control... a check-out system that assures fee payment before Kart leaves your shop. The detachable handle is a new feature of K-Kart.

K-Karts are strong... built of steel and aluminum construction. Interchangeable parts. Low upkeep. Perfect balance. Easy to assemble. Ball-bearing wheels. Semi-pneumatic tires. A real quality product.



MAKE 100%-500% PROFIT

Big public demand tells the profit story. K-Kart is not just another service but one that brings back BIG PROFITS. Limited supply. Order at once.

10" wheels \$13.95  
12" wheels \$14.95  
F O B CHICAGO

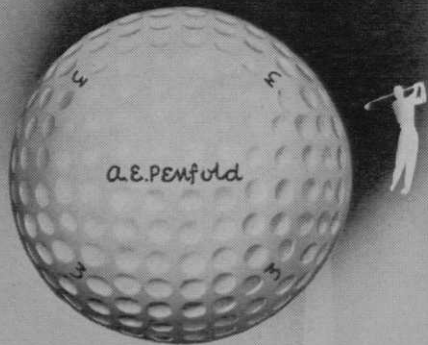
**KUNKLE INDUSTRIES** 2358 Clybourn Ave. Chicago 14, Ill.

**WHITEWATER RAINCOAT COMPANY**  
WHITEWATER, WISCONSIN

# MORE POWER

to your drive

with **Penfold**



## THE SECRET IS IN THE BALL

- PENFOLD gets away faster because its live, natural rubber cover is molded around the ball—not vulcanized over it.
- PENFOLD is livelier because its natural rubber cover is thinner—yet harder to cut.
- PENFOLD gives you more rounds of play because its natural rubber cover

stays white longer, is harder to scuff and easier to clean.

- "Hitters" like PENFOLD because even though it's 1-0-0-0-n-g it doesn't tend to soar.
- "Swingers" like PENFOLD because the extra distance it gives them helps to improve their game.

You'll be further ahead, as usual,  
with a **Penfold**

PENFOLD IS SOLD ONLY BY GOLF PROFESSIONALS



*Golfercraft*  
Inc.

MAKERS OF FINE GOLF CLUBS  
1700 West Hubbard Street, Chicago 22, Illinois

EXCLUSIVE NATIONAL DISTRIBUTORS OF PENFOLD GOLF BALLS