

Golf's newest, finest shirt —

AIR-FLO

has the features that win quick sales.

SINGLE NEEDLE CONSTRUCTION
BREATHING ACTION SLEEVES
CONCEALED POCKETS
SERGED EDGES AND SEAMS
ADJUSTABLE SLEEVES
FULL PLEATING, NO GATHERING
OCEAN PEARL BUTTONS
NEW, EXCLUSIVE FABRICS
2-BUTTON PLACKET SLEEVES

Compare the AIR-FLO with any other golf shirts near its price range. You'll quickly see, as your players will, that no other shirt holds a candle to its new design advantages, smart tailoring and fine fabrics. Sizes to assure true fitting. Retailers from \$6 to \$9 to assure quick turn-over. Write for full description of AIR-FLO's complete line.

Exclusively through
HOWARD SCOGGINS GOLF CO. DUNEDIN, FLA.



oversize" to Gene Sarazen is 3/16 of an inch; to Jim Turnesa it is 1/32 of an inch. Once again, this brings out the importance of factory terminology.

This completes our order for a set of woods placed by the staff member. You



Wilson's Russell Dreher (R) shows Joe Wolfe (L) and Dr. Cary Middlecoff finished club head he has just polished on factory buffing machine.

can easily see the impossibility of the task facing the factory in trying to build this set of woods accurately.

Iron Orders Also are Hazy

A typical iron order causes less confusion than the companion order of woods. However, we quite often receive an order of this type: "One set of irons, same as Pete Cooper's, same swingweight, same head weights, etc., only make clubs 1/2 inch longer and step up irons a little, and also make a little upright."

It is quite important to know that when a club is lengthened 1/2 inch, the swingweight automatically increases approximately three points. To keep the same swingweight on this set, we would have to remove 3/16 of an ounce from the head. A sixteenth of an ounce placed in the head or removed is equivalent to adding or subtracting one swingweight point. Of course, this same principle holds true in shortening a club; for every 1/2 inch that the club is made shorter,

golf clubs putting courses

DRIVING RANGES

PLASTIC COVER GOLF BALLS FOR DRIVING RANGES
\$3.25 per doz.

YOUR OLD CULLS COVERED WITH THE PLASTIC PAINT-LESS COVER — \$2.50 per doz.

ship old balls via truck, bill as SCRAP RUBBER

THE FINEST RANGE BALL BUILT — WHEN YOU BUY PLASTICS, YOU BUY THE BEST.

all prices F.O.B. all terms C.O.D.

WAGNER'S GOLF SALES CO.

534 TENTH STREET, SANTA MONICA, CALIFORNIA
EXBROOK 31689 formerly of Chicago

AMERICA'S BIGGEST SELECTION of GOLF AWARDS



A complete selection of golf trophies, cups, and plaques for tournaments and banquets. Immediate delivery from stock.

Send for catalogue No. G12



UNIVERSAL SPORTS AND AWARDS

Division of
Universal Bowling & Billiard Supply
515 S. Wabash Ave. Chicago 5, Ill.
Tele. - Wabash 2-5255

Monroe FOLDING TABLES

And Folding Chairs



WRITE FOR CATALOG NO. 225

DIRECT PRICES TO GOLF CLUBS, PARKS, HOTELS, SCHOOLS, etc.

THE Monroe COMPANY

12 CHURCH STREET COLFAX, IOWA

PERMA-MATS

Constructed of Tire Casings
for Heavy Duty—Longer Wear

ONLY
90c
PER SQ. FT.
PREPAID

1 THE BEST MAT FOR DRIVING TEES!

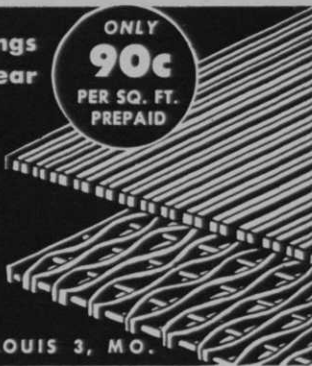
Designed to specifications of well-known pros, these mats are functionally ideal, reversible and virtually everlasting. The finest tee mat at the lowest cost to you.

2 BEST IN LOCKER ROOM, ENTRANCE & SHOWER

Perma-Mats pay for themselves by saving floors, spikes and preventing accidents. Lays flat (no kinks), thicker cushion, closely woven for firmer footing.

Immediate delivery on popular sizes, send specifications.

MERCHANTS TIRE CO. 2710 WASHINGTON AVE. ST. LOUIS 3, MO.



three swing points are lost. Then, in order to compensate for the loss of head feel, obtained by shortening the club, we would have to add 3/16 ounces.

In making this club $\frac{1}{2}$ inch longer, the pro undoubtedly felt that because his customer was tall, the clubs should be made upright. All well and good, but how much is upright? In knowing the factory terminology he would know that the standard lie on the No. 1 and No. 2 irons is 58 degrees and as we progress we change 1 degree for each club, becoming more upright, of course. The No. 8 and No. 9 irons, as a rule, have the same lie—64 degrees, and the pitching iron and sand iron have the same lie—65 degrees. Now that we know the factory specifications, and also remembering that on a $38\frac{1}{2}$ inch No. 2 iron deflection of $\frac{3}{4}$ of an inch is equal to 1 degree, why then it should and would be a simple matter to build the clubs exactly to specifications.

In asking for the irons to be "stepped up a little," we really run into a tough one. Our factory remains constant in our lofts on iron clubs: 17 degrees on the No. 1 iron, 21 degrees on the No. 2 iron, and 4 degrees between each club, right down to the sand iron. At present, the competitive race of the club manufacturers, which is always a good thing, has

led to a little confusion as to the lofts on irons.

Some brands believe that reducing the lofts on the irons will aid in more distance, which is true, and also swing Mr. Average Golfer and the pro into using their particular brand or brands. We remain constant on our lofts at present, choosing to allow the merits of the club to sell itself. Once again, in the final analysis, it is the home pro who will give the factories the answer as to what is the most desirable loft on an iron.

SUCCESSFUL SUPT.

(Continued from page 58)

become more important in their eyes, and again that is exactly what we are trying to accomplish with this sales campaign of letters.

Learn to Speak

Anyone who finds it difficult to talk to groups should take one of the many courses offered in all communities to aid people to more easily and forcefully express themselves. Remember that the members of your committees are business men and will give more consideration to and have more respect for your proposals and suggestions if they are properly voiced, and in respecting the proposal will

PRO GRIP LIQUID ROSIN

and
Pro Grip
Rejuvenator

Just What
You've Been
Looking for
to Get That
Tacky Feeling.



Sold through all Country Club Pro Shops

MANUFACTURER'S SPECIALTY CO., INC.

2736 Sidney St.

St. Louis 4, Mo.

LOWER OPERATING COSTS with RANGE BUILT PRODUCTS!

New *Paintless* Ball—White For Life

(Also in Colors)

NOW Available in Limited Quantities

NEW—Dow Metal—Long Life Range Driver

TEE MATS { 4' x 5'—Golfer Approved—No black smudge on clubs or balls. The only Trouble Free Mat in the business.

NEW—TEE QUEEN—Foolproof "Automatic" Tee

NEW—LOW PRICE Automatic Ball RETRIEVER

Write for New Money-Saving Illustrated Catalog

Wittek GOLF RANGE SUPPLY CO.

5128 W. North Ave.

Chicago 39, Ill.

"THE ORIGINAL AND STILL THE BEST"

PROS

Specify this immeasurably improved Grip
on your 1951 factory order.

IT'S A HONEY

**NEW PARK
ALL WEATHER
REGULAR Golf Grip**

Black or Red

**NEW PARK
ALL WEATHER
INDICATOR Golf Grip**

Black or Red

RAIN or SHINE

The ALL WEATHER is FINE

Order from your supplier or write

ALL WEATHER GRIP Co. 801 Milford St. Glendale 3, Calif.

"MANUFACTURED BY LAMB RUBBER CORP."

in turn have greater respect and regard for the man who made it.

This salesman superintendent of ours is now taking on the aspects of quite a fellow, so let us not neglect that phase of salesmanship which any successful salesman will tell you is of extreme importance, that is personal appearance. It is not necessary that we become fashion plates, but if we are going to be classed as supervisors we are going to have to look the part. A successful salesman must look successful and a successful superintendent must look like a superintendent. If we are ever going to command the salaries we expect and to which our knowledge and experience entitle us we are definitely going to have to command respect and believe me that will not happen as long as the players on our course cannot identify us from the men who work for us.

All of this adds up to quite a bill of goods and I am quite sure that none of us will ever accomplish all of it, but if we honestly try we are going to be amazed at the results, and we will have contributed our share in helping to elevate our profession. The same relations that have done so much toward gaining recognition for our fine golf courses will again pay

off in gaining personal recognition for ourselves and the profession as a whole.

As an old school teacher of mine used to say, "When building air castles build them high enough so when they fall there will be something to the ruins."

Let's be respectful, but let's also be respected.

SABAYRAC ISSUES NEW CATALOG

Ernie Sabayrac, 7104 Sheridan Rd., Chicago, recently mailed to professionals his new catalog of pro shop apparel and accessories. The catalog, entitled "The Tops for Pro Shops," has a marginal index for ready reference and is loose-leafed to permit future addition of pages devoted to new styles and items. Professionals may have a copy by writing Sabayrac at address above.

About 250 golf course, park, cemetery and highway superintendents were guests of Roseman Tractor Equip. Co., Evanston, Ill., early in May at Chesterfield GC, Niles, Ill. The affair, climaxed with a buffet dinner, featured demonstrations of Roseman gang mowers and Park Challenger mowers, together with Ford tractors and attachments.

MINIATURE GOLF COURSES and Outdoor Bowling Alleys

Two Big Profit Makers

Designed and Built by ARLAND

Builder of America's
Most Beautiful Miniature
Golf Courses

Largest Builder in the U. S.

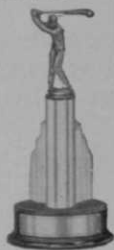
ARLAND

444 Brooklyn Avenue New Hyde Park, N. Y.

GOLF TROPHIES & PRIZES



Write for FREE catalogue of TROPHIES, PLAQUES, NOVELTIES, JEWELRY, & BANQUET SOUVENIRS.



**MALE OR
FEMALE GOLFERS**

IMMEDIATE DELIVERY

N75-A 5 1/2" high \$2.50

N1417 22 1/2" High \$23.50

THE TROPHY & MEDAL SHOP

10 S. Wabash Ave.
Chicago 3, Ill.

PRO FINISHED PERSIMMON HEADS

WOODS HAND MADE TO ORDER
WON-PUTT ALUMINUM PUTTERS

Quick Service on All Types of
Repair Work.

Bert Dargie Golf Co.

2883 Poplar Avenue, Memphis 11, Tenn.

Congo SUNSHINE HEADWEAR



Write today for the latest catalog of 1951 models illustrated in smart solid, two-tone, and plaid colors. Congo is the leading line of caps, visors, and hats for golf, tennis and other outdoor activities. Make your selections now to insure desired delivery.

Write us for Catalog . . . Order From Your Jobber
WHY UNDER THE SUN DON'T YOU WEAR ONE?
THE BREARLEY CO., ROCKFORD, ILL.

WINNERS OF ETONIC'S CONTEST

Winners of the Daffy Golf Shot Contest, sponsored by Etonic All-Weather golf shoes recently, by virtue of the novel shot which rolled up the jacket sleeve of Johnny Lisk (L) after he had hit it with some de-



gree of force but not too squarely, enjoy an all expense paid week at Pinehurst, N. C. With Lisk is professional John Davis, who

shared in the prize winning week. Both hail from Oswego, New York.

GLASS SHAFTS FOR NEW PUTTERS

Pros are showing lively interest in the new Levings Velvet Touch Putters recently announced by Acme Golf & Tackle Co., 801 8th St., Los Angeles. The complete line of 18 putters and a chipper, made for Acme by Fred Matzie Golf Co., features woven fibre, tubular glass shafts, said to impart more sensitive touch than hickory and definitely resist weather conditions. Each putter is scientifically balanced and comes in either brass or aluminum heads.

SCOGGINS HAS NEW GOLF SHIRT

Air-Flo, a newly designed sports shirt embracing many attractive features in comfort, appearance and tailoring, is being offered as a pro shop popular price leader by Howard Scoggins Golf Co., Dunedin, Fla. Air-Flo is 2½ in. larger at elbows, has larger armholes, patented side seam gussets, larger bi-swing back yoke and underarm Air-Flo vents for easy comfort and swinging. In regular sleeve lengths and neck sizes. Complete details from Scoggins at Dunedin.

GOLF BALLS, CLUBS & EQUIPMENT

FOR
DRIVING RANGE
MINIATURE OR
PITCHING COURSE
RETAIL SALES.

CONSTRUCTION &
MAINTENANCE
HINTS.

NORTHERN BALL CO.

3441 N. Claremont Ave., Chicago 18, Ill.



RUBBER TIRE TEE MATS 46" x 60"

RUBBER TEES

TIRE LINK MATS FOR
LOCKER ROOMS AND
CLUBHOUSES

Write for illustrations
and complete information.

ASHLAND RUBBER DOOR MAT CO.

P. O. Box 167

Ashland, Ohio



SENSATIONAL
Sun-Ray & Ivory
16 Inch Golf Award
\$15.10

We are featuring America's
Largest Sports Figures
**Write for Free
Trophy Catalog.**

SPORTS AWARDS CO.
Box 6
429 W. SUPERIOR ST.
CHICAGO 10, ILL.

PLACE MAT FOR 19th HOLE REPLAY

A distinctive design for cocktail napkins and place mats created specially for your club is now available from the Milwaukee Lace Paper Co., 1306 E. Meineck, Milwaukee. The company has added new presses that permit economical printing in one and two colors.

The art department creates special designs, by working with photographs,



menus and other advertising submitted by you. Some designs have illustrated actual course layouts—a clever conversation sparker for the nineteenth hole.

A number of economical stock designs are available and can be imprinted with your club name.

GOLF PRINTING

*Score Cards - Charge Checks
Greens Maintenance Systems
Caddie Cards - Handicap Systems
Forms for Locker and Dining Rooms
and for the Professional.
Fibre and Paper Tags
Envelopes - Stationery*
Samples on request.

VESTAL CO., 701 S. LaSalle
Chicago 5 Phone: HARRISON 7-6314
Established 1912

**CALDERWOOD USES PUBLICITY
TIE-IN WITH HOGAN FILM**

Cliff Calderwood, Brownwood (Texas) CC professional uses display in local theater a week before showing of the Ben Ho-



Professional Cliff Calderwood (L) and J. T. Hughes, Mgr. of the Bowie Theatre in Brownwood, Texas, stand beside display Cliff set up in lobby during run of the Ben Hogan film, "Follow the Sun."

gan film, "Follow the Sun" to get a lot of good publicity for himself and at the same time build up interest in the movie. Cliff reports he ran several "Follow the Sun"

ROBERT TRENT JONES

Member:
American Society of Golf Course Architects

**Golf Course
Architect**

20 Vesey Street
Tel: Rector 2-2258
NEW YORK, N. Y.

ALFRED H. TULL
Golf Course Architect

209 E. 49th Street
NEW YORK 17, N. Y.

ROBERT BRUCE HARRIS

Golf Course Architect

Member: American Society of Golf Course Architects

664 N. Michigan Ave.

CHICAGO 11, ILL.

Phone: Whitehall 4-6530

WILLIAM P. BELL AND SON

GOLF COURSE ARCHITECTS

Member: American Society
of Golf Course Architects

544 Sierra Vista Avenue
Pasadena 10, California

tournaments at the club a week before the picture opened giving away theater passes as prizes and was on hand at the exhibit in the lobby every evening during the run of the film.

GOLFER'S CRYING TOWEL

For good natured ribbing as well as serving a practical need, the Trophy & Medal Shop, 10 S. Wabash, Chicago, offers the



"GOLFER'S CRYING TOWEL." Measuring 17 x 22 in., with red and blue color-fast lettering on a white background, this washable towel should find many uses. Write for additional information.

TOMMY BOLT JOINS KROYDON STAFF



TOMMY BOLT

Tommy Bolt, a youngster on the major golf tournament circuit, has been added to the sales staff of The Kroydon Co. of Maplewood, N. J., according to an announcement by Sales Mgr. Frank Mitchell. Tommy has finished well up among the leaders in several

large tournaments. In 1951 he finished 3rd in the Miami Beach Open and 2nd in the LaGorce Pro-Amateur. Bolt is from Houston, Texas, but currently makes his home in Durham, N. C. He started tournament play on the winter circuit in 1946 finishing in the money four times out of eight tournaments entered in 1946 and 1947. Tommy stayed in Houston in 1948 and 1949 working on a construction job to build himself up physically as well as financially for a return to top tournament play. Until such time as a regular sales territory is available, Mitchell says Bolt will play the summer circuit and act as a field salesman and promotion man for the Kroydon Co.

WILLIAM F. GORDON

Golf Course Architect

Member

American Society of Golf Course Architects

Doylestown,
Pennsylvania

James G. Harrison

GOLF COURSE ARCHITECT

Member:

American Society of Golf Course Architects

R. D. #3, Box 372
Phone — Valley 3225

Turtle Creek, Pa.
Suburb of Pittsburgh

Buyers' Service

Check off your Supply & Equipment Needs. Tear out and mail this sheet to *Golfdom*, 407 S. Dearborn St., Chicago 5, Ill., or use convenient card. You'll get prices and literature direct from the sources of supply.

Golf Course

Aerifying equip.: green
Architects (course — house)
Ball washers
Ball Washing Compounds
Bent grass stolons
Brown-patch preventives
Compost mixers
Crabgrass control
Drinking fountains
Fencing
Fertilizers
Flags (greens) Flag poles
Flood lights
Fungicides
Gasoline engines
Golf Course Const'n Engineers

Hedge trimmers
Hole cutters
Hose, 3/4" 1"
Humus
Insecticides
Lapping-in machine
Miniature Course Const'n
Mowers: putting green
 whirlwind tee
 fairway rough hand
Mower grinders
Compost, prepared
Peat Moss
Pipe
Playground equipment
Pumps
Putting cups
Refuse containers

Rollers: power water filled
Root cutter
Scythes (motor driven)
Seed: fairway green
Sod cutter
Soil screeners Soil shredders
Sprayers: power hand
Spikers: greens fairway
Sprinklers: f'way green
Stiles (over fence)
Sweepers (power or hand)
Swimming Pool equipment
Swimming pool cleanser
Topdressing
Tractors
Tractor wheel spuds
Trap sand
Water systems, fairway
Weed chemicals



Pro Shop

Bags: canvas leather
Bag carts, for players
Balls: Regular Range
Ball markers
Ball retriever
Bandages, adhesive
Buffing motors
Calks, for shoes
Caps and hats
Club cleaning machine
Clubs: Woods Irons
 Putters
Club head covers

Club repair supplies
Club separators for bags
Cushion-sole Inserts
Dressing for grips bags
Golf gloves
Golf Grips: Leather
 Composition
Golf Practice Devices
Golf Practice Glove
Golf shoes
Grip preparation for hands
Handicap racks cards
Luggage (leather)
Mech. Range Ball Retriever
Pencils
Portable motor tool

Practice driving nets
Preserver for leather
Printing
Pro accounting book
Rubber-spiked overshoes
Score cards
Shoe spike wrench
Sportswear: Shirts Socks
 Sport jackets Rain jackets
 Windbreakers Slacks
Tees (wood) plastic
Tee & Score Card Holder
Tee mats
Tees (rubber) for driving mats
Teeing device (automatic)
Tennis nets
Trophies



Club House

Air conditioning equip.
Athletes foot preventives
Bath mats
Bath slippers
Bars
Deodorants
Disinfectants

Floor coverings
Folding Table (Banquet)
Kitchen equipment:
 Dish washers
 Frozen food storage
 Ice cube machines
 Slicing machines
Link Type Mats

Lockers
Movies of golf subjects
Playing cards
Printing
Runners for aisles
Rugs
Showers Shower mixers
Step treads
Towels: bath face

Send information to: Name Club Title

Club Address

Town Zone (.....) State

IDEAL SPORT GIFT or PRIZE!

Perpetual Calendar

Any athletic Sun-Ray figure on beautiful walnut base. 5 3/4" high. Suitable engraving space. G-2144 Ea. (no tax) \$7.50

Write for New Catalog

Edwin W. Lane Co.
32 W. Randolph, Chicago



WILLIAM B. LANGFORD GOLF COURSE ARCHITECT Balanced Topographical Design

Member:

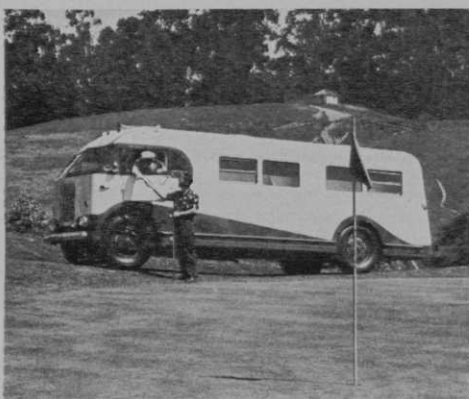
American Society of Golf Course Architects

Telephone: KEystone 9-6501

2405 Grace Street, Chicago, Illinois

"PINKY" BRINGS SHOWROOM TO PRO

Golf professionals and buyers throughout the eleven Western States can do their buying and make purchases without interrup-



"Pinky" Pencovic rolls mobile bus-showroom (above) to convenient spot and is in business when he opens door to display room (below).



tion when M. (Pinky) Pencovic, Oakland, Calif. calls on them with his new mobile bus-showroom. Permanent, built-in display

racks eliminate sample cases and ample storage space permits on-the-spot delivery of items carried in stock. The mobile bus-showroom is a remodeled Dodge bus originally built for the Army during World War II which later became war surplus and was finally turned into this novel display room after a first-class face lifting job by Pencovic.

A large rack on one side of the bus is devoted to Pencovic's basic lines of golf equipment—Bristol clubs. On the other side are carried such accessories as carts, gloves, balls, spikes, hoods, books and wearing apparel including caps, hats, sport shirts and ties.

"Pinky" reports business on tryout runs has been exceptional which he attributes to the novelty of his new idea but mainly to a quiet business atmosphere where there are no distractions or waiting for sample cases to be opened.

CYANAMID APPOINTS TURF SPECIALIST



W. E. ZIMMERMAN

F. S. Washburn, Dir., Agricultural Chemicals Div., American Cyanamid Co. announces appointment of W. E. Zimmerman as turf specialist. Zimmerman will promote the use of potassium cyanate for crabgrass control in turf and develop the possibilities of calcium

cyanamide in the establishment and maintenance of fine turf. Formerly general agriculturalist with Cyanamid, Zimmerman's wide experience with turf and the rapid acceptance of potassium cyanate for crabgrass control necessitated the appointment. His headquarters are at Bloomfield, N. J.

CREEPING BENTS

C-1

C-19

C-52

Branch Nurseries Farmington, Ia., Slocum, R. I., Winnsboro, Texas
Main Nursery & Office Madison I, Wisconsin P. O. Box 350

Old Orchard Turf Nurseries

R. R. Bond, Prop.

THE GREENS ARE THE FOUNDATION OF ALL SUCCESSFUL GOLF COURSES

LIVELY PRO SALES IN COLVER PUTTER

Art Colver, Dallas, Tex., designer and maker of the new reverse goose neck, aluminum head putter bearing his name, announced in April GOLFDOM, reports pro orders from all sections of the U.S. and from Hawaii. The putters are available in either leather or Goodwin Flange-Wrap Grips.

BRITISH GREENS MOWERS AVAILABLE TO U.S. GOLF COURSES

Atco Power Mowers, 67 Broad St., New York 4, N. Y., representing Charles H. Pugh Ltd., mower manufacturers of Birmingham, England, announce that Atco Greens Mowers, "Britain's finest", now are available to golf clubs in the U.S. In 17" and 20" models, Atco greens mowers have

high-speed, nine-blade reels, quick reel adjustment and finger-tip controls. The cutter blades are of Sheffield steel and, the makers say, the cutter reels require no periodic lapping in. For catalog, prices and information write: Atco Power Mowers at above address.

A novel idea in golf scoring systems developed by Wilbur H. Thomas, 2028 Newport Blvd., Costa Mesa, Calif. is the Golf Picture Score, a 3" x 5" book containing 18 outline pictures of tee, fairway and green of each hole, listing the number, yards, par and score. The player fills out his score on each page, showing the direction of his shots, and the number of shots on each hole.

Space is provided on the back page for the total score, number of putts, and number of drives.

CLASSIFIED ADS

Rates: Minimum insertion \$4.00 for 20 words; additional words 20c each. Bold face type, 25c. per word. Classified cols. reserved for help or services wanted and for sale of used equipment.

UNDER NO CIRCUMSTANCES ARE WE PERMITTED TO DIVULGE THE NAME AND ADDRESS OF THOSE PLACING THE BLIND ADVERTISEMENTS. RESPONSES TO ALL BOX NUMBER ADS SHOULD BE ADDRESSED TO THE BOX NUMBER AND MAILED TO GOLFDOM; REPLIES ARE PROMPTLY FORWARDED TO ADVERTISERS.

YOUNG MAN WITH MORE AMBITION THAN EXPERIENCE WANTS JOB IN GOLF SHOP OR WHAT HAVE YOU. ADDRESS AD 605, % GOLFDOM.

USED GOLF BALLS WANTED
Highest prices paid. Write us
for quotations.

WITTEK GOLF PRODUCTS
5128 W. North Ave., Chicago 39, Ill.

MANAGER available for town or country club, married, no children. Age 44. Prefer club with large food volume. Can furnish A-1 reference. Excellent caterer. Not afraid to work. Address Ad No. 606, % Golfdom.

FOR SALE BEAUTIFUL COUNTRY CLUB

LOCATED IN MIDWEST NEAR LARGE CITY. BRICK CLUBHOUSE, ATTRACTIVE, EXCELLENTLY EQUIPPED. EXCEPTIONALLY BEAUTIFUL ROLLING 18 HOLE GOLF COURSE: 20 ACRES WOODS, WITH STREAM. \$50,000 DOWN, TERMS ARRANGED. ADDRESS AD 607, % GOLFDOM.

WANTED—USED GOLF BALLS and RANGE CUTS
Highest prices paid.
Get our prices before selling.
EASTERN GOLF CO.
244 W. 42nd St., New York 18, N.Y.

Professional—22 years experience, Scotch born, sober habits, Class A PGA member. Married, no children. Excellent teacher. Will furnish the best of references. Desires position in the south for the winter months. Address Ad 601, % Golfdom.

SOUTHERN GOLF CO. GOLF BALLS, NEW - USED BOUGHT AND SOLD. RANGE BALLS. COMPLETE FAST RECOVERING SERVICE. WRITE FOR PARTICULARS. RUSSELLVILLE, ALABAMA, JOE CALWELL, PGA MEMBER.

FOR SALE: GOLF CLUB, EIGHTEEN HOLE. ESTABLISHED 1928. 25 MILES TO CHICAGO LOOP, NEAR TOWN OF TEN THOUSAND. HAS GOOD PLAY FROM ENTIRE CALUMET REGION. INDIVIDUAL OWNER MUST SELL BECAUSE OF OTHER INTERESTS. J. W. PETERS, 2552 INDIANA AVE., LANSING, ILLINOIS.

EXPERIENCED PROFESSIONAL DESIRES POSITION FOR COMING SEASON. HIGHEST CHARACTER AND BUSINESS REFERENCES. ADDRESS AD 602, % GOLFDOM.

PRO or GREENKEEPER OR COMBINATION. LONG EXPERIENCE. COMPETENT, AGREEABLE. MODERATE INCOME. EASTERN LOCATION. ADDRESS AD 603, % GOLFDOM.

For Sale—300 No. 2 Irons, 150 No. 4 Irons, Men's or Ladies', 15 Ladies' Sand Irons, 15 Juniors' 9 Irons and 20 Left Hand Irons. Top pro brand clubs all in perfect condition. Retail \$6.50 to \$10.00 each. Close out price \$2.75 per club or \$2.50 per club in lots of 1 Doz. or more. Dixie Fairways Golf Range, P. O. Box 38, Shively, Ky.

PRO-MGR. PRESENTLY EMPLOYED AS SUCH DESIRES CHANGE. 15 YRS. IN PRESENT POSITION WITH FULL AUTHORITY OVER OPERATION AND MAINTENANCE OF FIRST CLASS 18 HOLE RESORT GOLF COURSE. SUPERVISORY CAPACITY OF ALL CLUBHOUSE ACTIVITIES INCLUDING FOOD SERVICES AND BAR. NATIONALLY KNOWN RESORT BERTHS IN FLORIDA DURING WINTER SEASON. LONG TERM MEMBER P.G.A. EXPERIENCED ALL PHASES CLUB OPERATION INCLUDING COURSE CONSTRUCTION. ADDRESS AD 604, % GOLFDOM.

WANTED FOR CASH

Old golf balls retrieved from ponds or out of bounds on or around golf courses.

Outs and Bumps 72¢ per doz.

Off brands & synthetic \$1.80 per doz.

Round & perfect \$1.00 brands

for refinishing 3.00 per doz.

Note—No golf driving range cull throw-out balls

wanted at above figures.

Send for shipping tags and instructions

DRIVING RANGE MEN—REBUILDING

Get your cores in early while we have the new

type paintless cover material available for you.

Tested and proven to be the best process in re-

building for driving range use.

Circular and information on request.

NORTHERN GOLF BALL CO.

3441 N. Claremont Ave. Chicago 18, Ill.

MANAGER—with executive ability and thoroughly experienced wishes to enter into negotiations with first class club for position now or in the Fall. Prefers Midwest or East. Presently employed but available, if necessary, on reasonable notice. 45 years old with wife and one son. Wife does NOT assist in club operations. Address Ad 608 % Golfdom.

PRO—Internationally highly rated as teacher, player and progressive professional businessman. Fine record of competent, pleasant and reliable service to finest clubs. Highest recommendations. Will go anywhere in U. S. Address Ad 609 % Golfdom.