



**LET ME SHOW YOU WHY
ROSEMAN GANG MOWERS WILL
SAVE TIME, CUT LABOR COSTS,
GIVE YOU BETTER FAIRWAYS,
AND PLEASE YOUR MEMBERS!**

IMPROVED FAIRWAYS

Next to fine greens members appreciate smooth, uniformly cut fairways that provide a consistently good lie for every shot.

Smooth, uniformly cut putting green surfaces are the result of mowing with roller-type green mowers. This same desirable quality can be had in your fairways by using Roseman Hollow-Roller-Drive Gang Mowers. Give your fairways putting green like turf.

How often have you pressed with your foot just behind the ball to smooth imperfections in the turf to give your club head a good lie? Roseman Hollow-Roller Gang Mowers impart this same action to your entire fairway. Every shot a perfect shot!

LOWER LABOR COSTS

Roseman Hollow-Roller-Drive Mowers mow faster without kicking up in the rear like a hand mower—less time required to mow. Roller design permits overhang of traps—no slow costly hand trimming remains. No protruding side drive wheels permit close cutting around trees. Narrower overall width permits mowing in tight places. Specialized hand equipment use reduced to minimum. Fewer man-hours required to perfectly groom your course. Labor shortages are no serious drawback on Roseman equipped courses.

LESS DEPRECIATION

Roseman Gang Mowers are proven to last longer. Top quality and provision in design for low cost replacement of all wearing surfaces make it unnecessary to discard or replace many costly parts. Added length of life means less depreciation—lower cost each and every year.

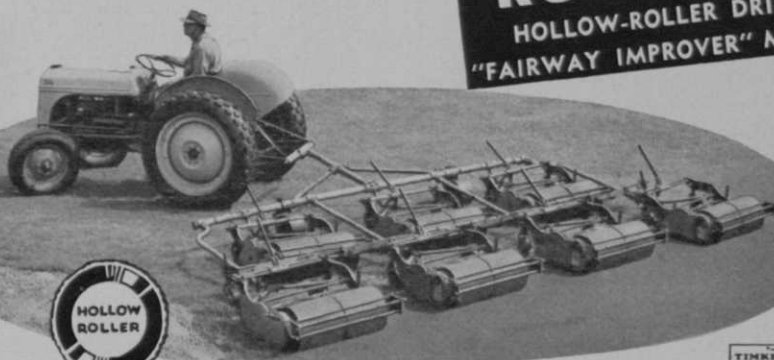
QUALITY EQUIPMENT

The Roseman Hollow-Roller-Drive Mower is the only gang mower with nonbreakable side frames. No exasperating breakdowns in growing season. Friction-free roller chain drive running in oil bath reduces mower pull, Timken tapered adjustable bearings give perfect reel alignment at all times with less wear and easier pull. Zerk fitted wearing points increase mower life, and further add to ease of pull. Highest quality carbon molybdenum bedknife and chrome nickel cutting reel steels, precision tempered and riveted—not welded—used throughout.

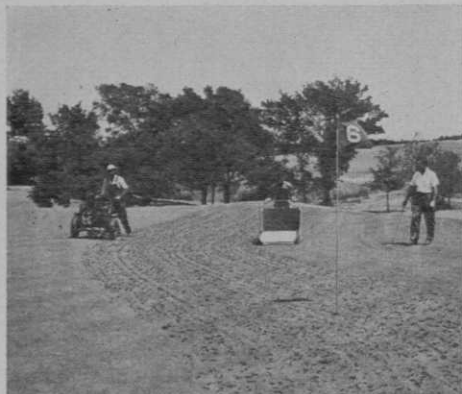
WRITE, WIRE or PHONE FOR DETAILED PRICE and DELIVERY INFORMATION TODAY!

PHONE . . UNIVERSITY 4-1842

**ROSEMAN
HOLLOW-ROLLER DRIVE
"FAIRWAY IMPROVER" MOWERS**



ROSEMAN MOWER CORPORATION
EVANSTON, ILLINOIS U. S. A.



THE FERGUSON NIGHT CRAWLER

GREEN AERIFYING MACHINE

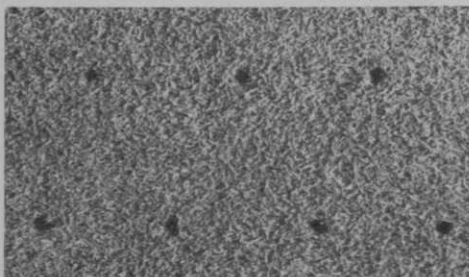
See the improved action of the Night Crawler at the Chicago Turf Conference.

Complete hollow-tining at the time cultivation is most needed is now possible. The Night Crawler gives complete penetration regardless of compacted conditions left by driving spring rains and heavy early season play.

Eighteen hole courses can be completely hollow-tined in two days without extra help with less surface disturbance than is normally caused by top dressing. Greens are taken out of play only during actual processing and clean-up which amounts to less than one hour.

Clean cutting tines will not transplant crabgrass and poa-annua from borders. The Night Crawler can be turned around on the green while in operation or will climb steep banks.

PATENT PENDING



Dealers in most sections of the United States and Canada

Manufactured by

By FERGUSON & SONS.
TURF PRODUCTS DIVISION
EAU CLAIRE, MICHIGAN

tion for home club pros and amateurs, at Great Southern CC, Gulfport, Miss., March 22-25 . . . Pro money \$4100.

St. Andrews Old and New courses in bad shape and officials are worrying about getting them in shape for overseas visitors to Festival of Britain this year . . . Enid Wilson suggests in Golf Illustrated, London, that women's tees be abolished in Britain to develop longer driving by British women players . . . Main thing wrong with interesting suggestion that various clubs in a bag be distinguished by standardization on different colored grips is the variation in lofts and weights of clubs . . . Variations in lofts of manufacturers lines aren't as extensive as those numerous star players effect in altering their clubs.

Fred Wampler, National Intercollegiate and Indiana 1950 champion, graduates from Purdue to become pro at Indianapolis Speedway course . . . Wampler at Lake Worth (Fla.) CC as Vic Bass' asst. this winter . . . Sam (Croesus) Snead again year's top money winner . . . Approximately \$39,000 in 1950 by PGA official recording . . . Snead's total golfing income for 1950 probably twice that amount . . . Counting the playing lesson and other friendly match take Sam must have averaged more than \$6 a stroke . . . That's good for pro golf . . . Glad to see it, Sam's a grand guy.

Eric Monti wanting to retire from tour

GOLF COURSE FOR LEASE

18 hole golf course and clubhouse in state of disrepair. Not used for past three years. First three years rental to tenant to equal taxes and insurance on property. Equitable provisions at end of five or six years for lease holder to buy and owner to sell.

First nine holes 3,245 yds. Par 36.
Second nine holes 3,430 yds. Par 37.

This plant covers 127 acres and is located six miles west of the Chicago suburb of Glencoe, Ill., at Dundee and Saunders Rds.

Address all inquiries to Ad 103, c/o Golfdom.

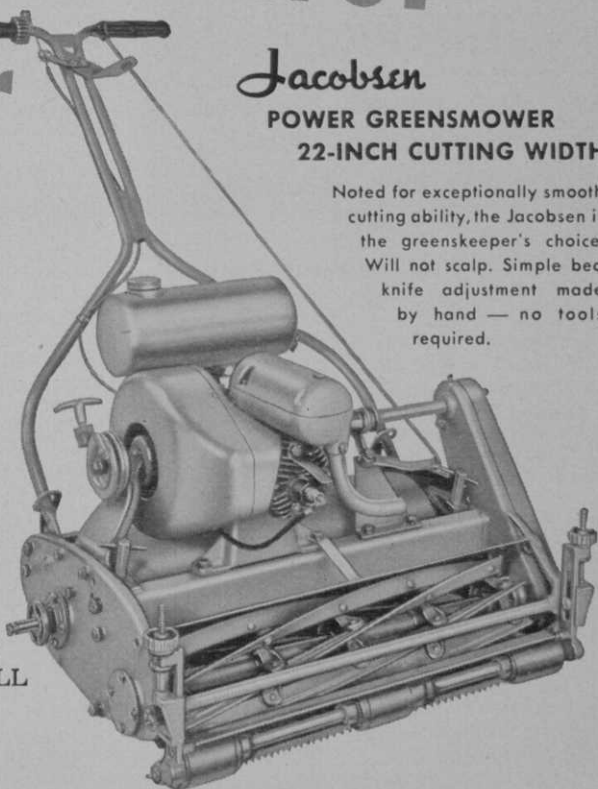
greensmower leader

**with
engine
to
match**

Jacobsen

**POWER GREENSMOWER
22-INCH CUTTING WIDTH**

Noted for exceptionally smooth cutting ability, the Jacobsen is the greenskeeper's choice. Will not scalp. Simple bed knife adjustment made by hand — no tools required.



Designed specifically for power mower use, only the Jacobsen engine gives you ALL these advantages:

DOUBLE-QUICK STARTING — Jacobsen engines deliver power strokes at every revolution of the crankshaft. Ordinary engines deliver power strokes at every second revolution of the crankshaft. Jacobsen's double power strokes mean double-quick starting.

POSITIVE, FRESH LUBRICATION — With oil and fuel mixed, Jacobsen engines provide fresh lubrication — FOR ALL MOVING PARTS, ALL THE TIME.

HORIZONTAL DESIGN — Jacobsen's streamlined horizontal engine designs means less vibration and better balance, as well as smoother overall appearance.

STEADY POWER AT SLOW SPEEDS — Jacobsen engines with a power impulse every revolution deliver smoother performance over their entire speed range — giving steady power even when throttled way down.

Jacobsen **MANUFACTURING
COMPANY**
Racine, Wisconsin

Here's What You Get When You Buy a ROYER....

- 1- Rich, properly prepared, ready-to-use compost
- 2- Up to 89% reduction in labor costs
- 3- A sturdy, rugged machine for long-time operation

Good, nourishing top dressing as prepared with a Royer Compost Mixer is ready for immediate use on your greens. Smoothly blended, finely granulated and with all twigs, stones and trash removed, it can be applied without interfering with normal use of the course.

The desired materials (sand, top soil, commercial fertilizers) are shovelled into the hopper and the Royer does the rest, with savings up to 89% in labor costs over manual methods.

The Royer is a strong, rugged piece of equipment, built to withstand many years of hard service. Hundreds are in use on golf courses all over America, many for 15 years or more. Bulletin 46 gives complete details.



Royer Model K
at Dallas Country
Club

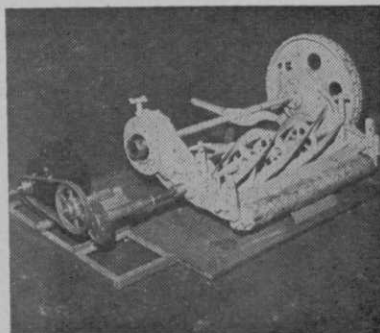
ROYER FOUNDRY & MACHINE CO.
171 PRINGLE ST., KINGSTON, PA.

nament circuit and work at club job . . . Western Golf Assn. re-elects Jerome P. (Jerry) Bowes, pres. . . WGA now has 86 former caddies in 24 universities as Evans Scholarship Fund students . . . WGA increased individual membership to 7,529 in 1950 . . . Chicago District GA re-elects Pres. Stanley A. Van Dyke and entire ticket. CDGA had 12,529 handicap cards issued in 1950 . . . Largest group was 4,058 in Class B (13-18) . . . Wm. Boyd elected pres., Northern California GA succeeding late George McRae.

Pete Lamb named pro at recently opened Yuma (Ariz.) CC 9 hole course . . . \$75,000 clubhouse under construction . . . Fresno (Calif.) Airways public course (5200 yds.) opened . . . Adolph Swoboda signed as pro by Gilman Hot Springs 9 hole course near Gilman, Calif. . . University of Idaho 9 hole short course, designed by Frank James, to be ready in spring . . . About 90 traps added to Oakland Hills CC by Robert Trent Jones in tightening the 1951 National Open course particularly for the long loose hitters . . . Traps won't punish average players . . . Oakland Hills Supt. Herb Shave, Jones and his assistant Bill Baldwin collaborated on traps' maintenance angle . . . Oakland Hills was designed in 1916 by Donald Ross.

Mrs. Claremont Gushee Richards, 50, wife of Vincent Richards, head of Dunlop

ATLAS LAWN MOWER LAPPING MACHINE



A compact, light-weight machine for lapping all models of Hand, Power and Gang Mowers! May be easily used on work bench or floor, eliminating the lifting of heavy mowers. The simple height adjustment for the reel shaft may be used from 4 1/2" to 10 3/4". Equipped with several attachments to fit different reel shafts. Metal blocks for rollers. Steel stands to support the mower.

FULLY GUARANTEED

List Price, With Motor \$61.50

List Price, Without Motor 39.00

Write for Bulletin.

Atlas Lawn Equipment Co.

9761 Olive Street Road

St. Louis 24, Missouri

sports div., died Dec. 16 at her home in Scarsdale, N. Y., following an illness of several months . . . Many in pro and amateur golf had the delight of her bright friendship and warm hospitality . . . She and Vinnie were one of the merriest of matrimonial teams . . . Her husband, two sons, Vincent Jr. and Dean; a daughter, Mrs. Adriane Mitchell, and a brother, Colin, have their loss shared by all who enjoyed the treasure of knowing Gushee Richards.

Washington, D. C. five public courses to go under District recreation board operation; shifted by Interior dept. from private operation by S. G. Leoffler . . . District plans to hire Director of Golf Aug. 1, 1951 to take over Jan. 1, 1952 . . . District estimates 1952 income from courses will be \$465,000, with about \$88,000 net . . . Bobby Locke to return to U. S. in March . . . Will play series of exhibitions with Chandler Harper.

If you ask us, the most valuable unselfish work being done in sports is that of golf through the Evans Scholarship Foundation of the Western Golf Assn. . . There are now 86 Evans scholars at 56 colleges, representing 50 WGA member clubs . . . Report of the WGA Scholarship Committee submitted at WGA 52d annual meeting should be read by every club official genuinely interested in developing golf's helpful influ-

**TIME AND MONEY SAVER
FOR EVERY PRO SHOP
HANDEE®**

tool of 1001 Uses

- ✓ Initial clubs
- ✓ Smooth out nicks—
in both woods and irons
- ✓ Speed up refinishing
- ... unlimited other uses, too!



Put HANDEE to work in your pro shop! Here's the "Toolshop in Your Hand" that's good for countless jobs. HANDEE grinds, drills, polishes, routs, engraves, carves, cuts, etc. . . on metal, wood, plastic, etc. Rugged, dependable, cool running . . . perfectly balanced for pencil-like operation. AC-DC, 25,000 r.p.m. For fast, sure performance, choose HANDEE—first and finest!

COMPLETE HANDEE KIT — 51 matched accessories in fitted metal chest **\$27.50**

HANDEE only, with 7 accessories \$19.95

CHICAGO WHEEL & MFG. CO.

Dept. G, 1101 West Monroe St.
CHICAGO 7, ILLINOIS

Order yours today
—HANDEE— Sent
postpaid on money-
back guarantee.
Free Catalog.

More than

5,000,000

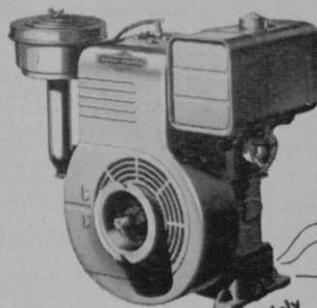
**4
CYCLE**

BRIGGS & STRATTON

**GASOLINE
ENGINES**

The performance record of more than five million Briggs & Stratton 4-cycle, air-cooled engines speaks for itself.

BRIGGS & STRATTON CORP.
Milwaukee 1, Wisconsin, U. S. A.

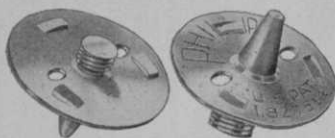


*the world's most widely
used single-cylinder
gasoline engines*

In the automotive field Briggs & Stratton is the recognized leader and world's largest producer of locks, keys and related equipment

PHILLIPS

CAM LOCK



The Answer to Lost Spikes

CAM LOCKS have been added to the regular LARGE BASE spike. The CAMS hold spike fast in position. Will not rough sole.

F. C. PHILLIPS, INC.
STOUGHTON, MASS.

ence on and for superior young Americans . . . Don't suppose the report will be extensively read, though . . . We're now in another period of kids getting their heads shot off and the old guys sitting back on their lead pratts and belly-aching about what war's costing them.

Velvet Bermuda, Ormond Bermuda and Manila grass (*zoysia matrella*) cited in Bill Bischoff piece in Miami (Fla.) Daily News as golf's contributions to Florida lawn improvement . . . Willis Foland at Ponte Vedra (Fla.) CC as club pro . . . Pete Cooper still with Ponte Vedra as playing pro . . . Foland came from asst. spot with Harold Sargent, pro at East Lake CC, Atlanta, Ga. . . Ken Lind, formerly with Errie Ball, Oak Park (Ill.) CC, Sargent's new asst.

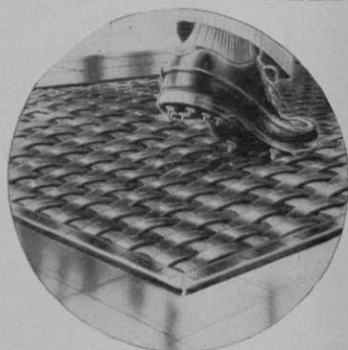
California CC, Los Angeles, started in 1915 as 9 holes, sand greens, sold for approximately \$1,000,000 . . . After war restrictions are lifted clubhouse will be converted to resort hotel . . . Course will be retained . . . West Point (Pa.) Lawn Products Co. compiled report of 1950 Florida GSA Turf Management conference that's profitable reading for southern course supts.

Unless war compels cancellations, 1951 tournament circuit purses will hit record high of nearly \$700,000 . . . More applications for PGA co-sponsored dates than can

Pneu-Mat STOPS CLUBHOUSE DIVOTS!



Don't let spikes *ruin* your clubhouse floors. Install PNEU-MAT RUNNERS in locker rooms, corridors, pro-shop — over any flooring being "chewed up" by spikes.



PNEU-MAT-RUNNERS are better than ever!

They are now being made with a tough vinyl binding for longer wear.

Write **TODAY** for complete details!

SUPERIOR RUBBER MFG. CO., Inc.

122 EAST 25th ST. NEW YORK, N.Y.

Boston • Chicago

be handled . . . Unless World War II vets are called back into uniform tourney fields will have about same field of headliners . . . Harold Sargent re-elected pres., Southeastern PGA . . . Johnny Cochran, Greenwood (Miss.) CC re-elected sec.-treas. . . . Veteran pros in south warming up for PGA Seniors annual championship at Dunedin PGA National course, Jan. 8-13.

Central-American championship at Tegucigalpa, Honduras in November, bringing together teams of Central American countries, and International Cup matches at Laredo, Tex., between U. S. and Mexican amateurs, sure should accent wisdom of creating close, friendly relations in this hemisphere by golf . . . No chance for this in Asia now . . . Present USGA amateur regulations virtually prohibit this extension of mutually pleasant propaganda of international golf matches with Central and South American countries . . . Yank pros do good diplomatic touring jobs but as their expenses and fees are paid by their hosts the pro visits don't have the weight amateur team visits would have.

Jack Senn, Toledo (O.) Times sports editor, in recent column listed Frank Stranahan's remarkable record since the war . . . Six Opens . . . 13 amateur titles . . . Lot more performances as low amateur in Opens . . . One of the greatest records, amateur or pro, for a fellow who enters as



Out in front . . .

Yes, for thick, fast greens and uniform fairways, *Scott's* TURF PRODUCTS lead the field. Over a quarter of the clubs in the nation enjoy Scotts turf perfection. Plan now to treat your members to the extra pleasure of championship turf. It's really easy to acquire! Write at once for our turf specialists' recommendations. No obligation, of course.

O M *Scott's* & SONS CO
Marysville, Ohio
also Palo Alto, California

Scott's ARE FAMOUS
FOR CHAMPIONSHIP TURF

The Heart of Golf's Healthiest Turf . . .



BUCKNER . . . The Finest in Golf Watering Equipment

For more than 30 years golf course management has depended on Buckner for the utmost watering efficiency. For the health and protection of your turf get the best — specify Buckner.

Special Representatives:

7658 Calumet Ave., Chicago, Ill.

1491 Riverside Drive
Los Angeles, Cal.

VISIT BUCKNER
during the NGS
National Turf Meeting
BOOTHS 44 - 45

Sherman Hotel, Chicago
Jan. 29 - Feb. 2

Inspect golf's latest in
watering equipment.

BUCKNER MFG. CO. FRESNO, CALIF.

TEE-OFF MATS

for DRIVING RANGES
& Public Course
Operators

ALL SIZES
IMMEDIATE
DELIVERY



Special Mats for Locker Room
entrances and Shower Rooms

GOLF BALLS TEES
CLUBS FOR RANGES

Putters, Balls, Clubs for Miniature and
Chip Putt Course

Prices and full details available
on request.

EASTERN GOLF CO.

244 W. 42ND ST. DEPT. A
NEW YORK 18, N. Y.

many competitive events as Frank does . . . Official Golf Guide for 1899 listed 558 clubs in 36 states, and admitted itself "very incomplete."

Innis Brown, veteran and highly competent golf writer, now on USGA staff filling in for USGA Asst. Executive Sec., Lt. Cmdr., John P. English, USNR, recalled to duty with the Navy . . . Monroe (Mich.) set a new world record for speed-ball with 34 players from 4 to 30 handicaps getting ball around 9 holes in 5 min., 28 sec., scoring 44.

Government restriction on golf course construction tables city of Los Angeles plans for construction of two badly needed courses in Sepulveda dam area . . . Likewise halted Los Angeles County's planning for course in East Pasadena . . . Heavy play in 1950 caused discontinuance of sale of 1951 yearly tickets good for all times on Bethpage State Park four 18-hole courses near Farmingdale, L. I., N. Y. . . Fellow tells John M. Brennan that more than 30,000 boys caddy on Long Island each year.

Grand plug for Al Clare, gkpr., El Monte GC, in Al Warden's sports column in Ogden City (Ut.) Standard-Examiner . . . Offer made for Asheville (N. C.) 18-hole munny course by subdivider . . . Bidder proposes to lease 9 of the 18 holes to golfers, subdividing other 9 . . . University of New Mex-

the golf cap
that's sweeping
the country . . .

Flip-It's

authentic TARTAN PLAID GOLF CAP

of cool, genuine panama cloth

Flip-It features the biggest selection of smartly styled Tartan Golf Caps. Of cool, ventilated, genuine Panama Cloth, this new 8-piece matched cap with button on top has won tremendous popularity with golfers throughout the country. Packed solid to the dozen in these authentic Clan Tartans.

Gordon	(green and blue)
Wallace	(red and black)
MacPherson	(black and white)
Macleod	(yellow and black)
Stewart	(brown and maroon)

Order by Clan Name—a fast, profitable retailer at \$21.00 per doz. Terms: 2/10 E.O.M.

Flip-It inc.

Just One Of Flip-It's Big Selection of Golf Caps and Hats.
For complete Flip-It catalog, write:

23 Waverly Place, N.Y.C.



ico golfer says he's bought a new set of irons he believes will improve his game 10 strokes until he gets used to them.

PGA of Australia and PGA of South Africa planning to establish international fixture . . . Might make another big event to have Ryder Cup winning team meet Australia-South Africa winner.

In *Praise of Golf*, an anthology of classic comments on the game, incidents and personalities, compiled by Webster Evans and Tom Scott, has been published by Frederick Muller, Ltd., 29 Great James St., London, WC 1, Eng. . . . Price is \$1 . . . *PGA Teachers' Guide*, an excellent collection of instruction and clinic articles that have appeared in the *PGA*, has been published under the direction of the *PGA Teaching Committee*.

9-hole, 1556 yd., par 27 pitch-and-putt course on 12 acres at Golden Gate Park, San Francisco, now in play . . . Designed and built by Jack Fleming, supt. of city golf courses for San Francisco . . . Fleming also designed new many course being completed for Stockton, Calif. . . . Lee Hulbert, supt., and green chmn. S.S. Cort, in improvement program on Presidio GC course at San Francisco.

Women's Western GA re-elects Mrs. Charles H. Price, pres. . . . Sets 1951 tournaments: WWGA Amateur, Plum Hollow

(Continued on page 66)

NORTHERN GOLF BALL CO.

3441 N. Claremont Ave.

Chicago 18, Ill.

Distributor of

"THE TURF KING"

GENUINE TAMPICO BALL
HITTING & MAT BRUSH

Designed for use at all
tee-off points on Golf
Courses, Schools or
Driving Ranges.

Ideal for Wood or Iron Play

also

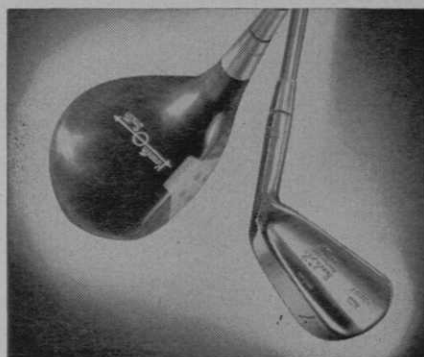
The

"CALIFORNIA YELLO JACKET"

Driving Range
and
Miniature Course
Golf Ball

Permanent Color

"CLEAR thru the COVER"



Better Clubs Make a Better Golfer

Seventy per cent of men playing Kenneth Smith clubs shoot in the 70s. The national average — all makes of clubs — is only 2½% (according to an impartial, national survey). The reason is easy to discover — Kenneth Smith clubs are handmade to fit your customer's measurements, scientifically matched and all clubs in a set identically swing-balanced. No other clubs are so matched and so balanced.

Pros: Write for new booklet that helps you sell Kenneth Smith clubs.

Give Your Members Better Service with

KEN SHOP SUPPLIES

Golf Club Lacquer, Adhesives, Form-a-Coat, Grip Conditioner, Buffing and Bench Supplies, Official and Lorthymic Scales, Stain & All Shop Supplies

Write for handy Supply Order Form

Kenneth Smith
GOLF CLUBS
Hand made to fit You
BOX 41, KANSAS CITY 10, MO.

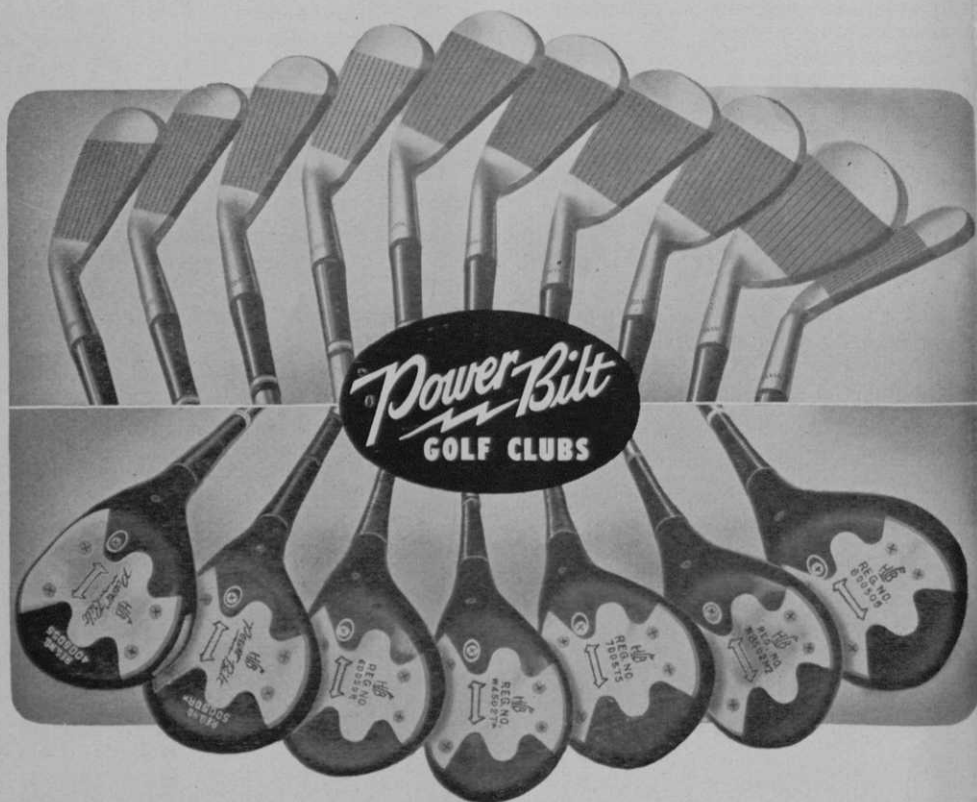
SEEING IS BELIEVING



We have something to really brag about — and everyone who has seen and has felt the 1951 Power-Bilts agrees.

Words and pictures simply can't do justice to these new beauties. They're refreshingly new in design and thrillingly beautiful to look at! If you haven't already seen them, make it a point to do so soon . . . we know you'll agree that this year's Power-Bilts will be the most talked-about clubs in '51.

"Sold Exclusively by Golf Professionals"



HILLERICH & BRADSBY CO., LOUISVILLE, KENTUCKY