

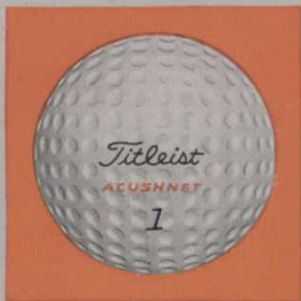
9,256,199 PEOPLE WILL HEAR ABOUT ACUSHNET IN 1951...

In April, the greatest advertising campaign ever planned by Acushnet will be launched in four great national magazines as well as in the leading golf periodicals... and will continue throughout the year!

Large and powerful as this campaign is, it is in proportion with the tremendous increases in Acushnet sales which you and we have enjoyed (and are still enjoying) during the past months.

You, every Pro in the country, can't help but benefit from this terrific promotion program. It will send more golf ball buyers looking for Acushnets into your shop than ever before.

Support this great drive... it's well worth supporting! Remember, no Acushnet Balls are available anywhere except in your shop or the shops of your fellow Pros. Acushnet Process Company, New Bedford, Mass.



Sold the world over through Pro Shops only



Swinging around Golf

NEWS OF THE GOLF WORLD IN BRIEF

Carnoustie Club gets 28 trophies won by Mac Smith, including the Carnoustie medal he won as a 16-year-old amateur . . . Henry Cotton turned over to the club the medals received from Mac's widow . . . The Carnoustie Club, an artisan club, also has 15 medals won by Mac's brother Alex, including the 1906 and 1910 U. S. Open championship medals . . . Golf Monthly of Edinburgh says increased taxation in Britain makes it impossible for women to give enough time to golf to make them good competition for American women players . . . Commenting on 1950 Curtis Cup affair Golf Monthly says: "Subscribers to the international match funds may not be ready to sign their checks for 'joy trips' which bring little national credit."

Bill Gordon, re-elected pres., Illinois section PGA . . . Errie Ball re-elected sec. . . Illinois membership is 200; largest section of PGA of America . . . Fred Cobb's North Texas State College golf team gets a great record page in the school's football programs . . . North Texas State, NCAA golf champions past two years, won 17 of the 18 events they competed in during 1950 . . . They finished second in the Southern Intercollegiate.

Jack Redmond made trick shot film for CBS television at Mid-Ocean, Bermuda . . . Australia now has a business journal of golf named the same as this magazine you're reading, the world's first golf business magazine . . . Australian Golfdom is published every second month and has a subscription price of approximately \$3 a year . . . Account of dryness in midwest late fall seeding didn't make much progress before winter came.

Midwest Assn. of Golf Course Supts annual dance postponed one week until Dec. 14 by severe storm . . . There's a 9-hole course at Bowling Green (O.) State University where Shirley Spork now is teaching golf . . . Shirley formerly taught in health and physical education dept. of Detroit's Hutchins intermediate school . . . Shirley and other girl pros at schools doing a great job for golf. O. M. Lamberson, North Hempstead CC, elected pres., Long Island GA . . . Roy Bronson, pro at Greenwich (Conn.) CC has bought Rio Vista GC, Holly Hill, Fla. from Charles Kennett, Jr. . . . Bron-



HERB GRAFFIS

don also interested in Plymouth CC, near Orlando, Fla. . . . Anti-slot machine legislation will have tough financial effect at numerous country clubs . . . Now how about national legislation against horse racing, card and dice games and keno? . . . But not to the degree eliminating the gorillas as sources of campaign funds and political shakedown.

Champaign-Urbana, Ill., to have new 18-hole public course started by heavy contribution from Hartwell C. Howard . . . Urbana Jaycees in campaign to raise rest of money . . . Dick Naughtin who'll be pro-gkpr., on job in charge of construction.

Walter (Buddy) Heckman, formerly asst. pro at Berleigh CC, has leased Green Hills GC, 9-hole fee course, near Reading, Pa. . . . Charley Curtis in LA Examiner says Los Angeles CC disappointed that USGA awarded 1952 National Amateur to Seattle . . . Ponca City (Okla.) new munny 9-hole course expected to be in play this spring, says City Supt. Wayne Moler . . . Henry E. Williams, Sr., now supt. at Alamance CC, Burlington, N. C. has never missed payment of PGA since the organization started as the Eastern PGA about 34 years ago . . . Henry Sr., still plays a pretty good game . . . His son, Henry, Jr., you'll remember, was a giant-killer in the 1950 PGA.

Willie Turnesa named by USGA capt. of Walker Cup team which will play British at Birkdale, Southport, Eng., May 11-12 . . . Runcie Martin, Duluth Herald and News-Tribune golf writer reported figures on putting time at 1950 National Amateur in USGA Journal . . . Runcie, by stopwatch tests found generally the faster putters were the more accurate . . . He found the Bill Campbell-Allan Whaling 17-hole match used 36 minutes, 56 seconds for studying and stroking putts.

Wm. B. Langford, Chicago architect, has completed second 9 for Ridgeway CC, Memphis, for which he laid out first 9 in 1918 . . . Langford also recently has done considerable revising and modernizing work at Bryn Mawr GC and Riverside GC (both Chicago dist.) and Keokuk (Ia.) CC . . . Porky Oliver in leaving Pacific Northwest says there's not enough instruction for young golfers in Northwest and not

Royer Model NCB-2 at
Meadow Brook Golf Club,
Salt Lake City, Utah



"TOPS" in Top Dressing

Royer Compost Mixers produce the deluxe top dressing used on America's finest courses. Firm, velvety greens require plenty of rich, nourishing, properly prepared compost . . . just the kind the Royer produces.

Two or three men shovel the sand, dirt, humus and fertilizer (or other ingredients as desired) into the hopper of the Royer and a smoothly blended, finely granulated compost is discharged . . . free of all stones, twigs and trash. The Royer is also used to shred creeping bent sod into high-vitality stolons . . . doing both these jobs in a fraction of the time required by hand methods.

Write for Bulletin 46 giving full information on gasoline, electric and belt driven models in capacities up to 12 cubic yards per hour.



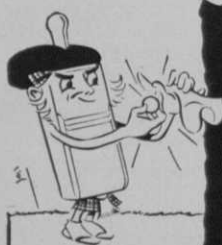
ROYER FOUNDRY & MACHINE CO.
171 PRINGLE ST., KINGSTON, PA.

enough tournaments and newspaper publicity . . . Oliver's comment stirred up newspaper guys who said newspapers can't make golf news—they just write about it.

Veteran Earl A. Ross of Winged Foot GC elected Metropolitan (NY) GA pres. at association's 53rd annual meeting . . . Maurie Luxford already getting clubs and pros lined up for 1951 National Kids' Day Foundation sweepstakes . . . Society for Visual Education, Inc., 1345 W. Diversey Pkwy., Chicago 14, arranges with Athletic Institute for distribution of "Beginning Sports Series" which includes National Golf Foundation's "Beginning Golf" instruction color filmstrip.

Chet Mendenhall, Mission Hills CC, Kansas City, Mo.; elected pres., Central Plains Turf Foundation . . . L. E. Lambert, Oakwood CC; W. E. Updegraff, Wichita CC, Earl (Smiley) Bell, also representing golf on Foundation . . . Turf plots being established at Kansas State College, Manhattan, Ks. . . . Research to be financed by club and individual dues . . . Next Central Plains Turf Conference, Oct. 24-26, at Kansas State College . . . To draw from clubs in Mo., Ks., Neb., and Wyo.

Discuss converting one of Woodward, Okla., airports to golf course . . . Second nine of beautiful new Myrtle Beach S. C., Dunes Golf and Beach club recently opened



The Famous
**LEWIS
IMPROVED
GOLF BALL
WASHER**

LOW COST!

BEAUTIFUL! EFFICIENT!

NEW RUBBER CUSHION arrangement in bottom of washer absorbs shocks, adds to life of cleaner.

NEW TYPE FINISH includes third coat of clear plastic. Withstands season after season in any climate.

EASY TO USE — just pull up paddle, insert ball. A few quick strokes leaves ball shining clean, ready for play . . . and fewer lost balls!

Better Courses Provide
LEWIS WASHERS at every tee



The
**LEWIS
MAGIC
SLOT**

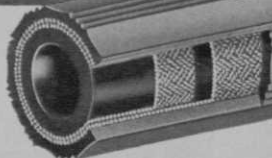
Order from your dealer now!

G. B. LEWIS CO.
Watertown • Wisconsin



Attention: Greens Committees

YOU CAN BEAT HIGH HOSE BILLS
with EMERALD CORD HOSE built with RAYON



HERE'S your answer to hose costs: Specify long-lasting EMERALD CORD—Goodyear's super-quality hose for country club and estate use. It far outlasts any other hose you can buy—carries a lifetime guarantee against material or workmanship defects. Available in 25-, 50- and 100-foot lengths, coupled with nickel-plated fittings, in $\frac{5}{8}$ ", $\frac{3}{4}$ " and 1" sizes—at your dealer's.

WINGFOOT GARDEN HOSE

A Top Quality Lighter Weight Hose

Will withstand 12 times average city water pressure. Won't kink, snarl or "fight" users. Extreme flexibility and light weight.

Here's why EMERALD CORD Means Lowest-Cost Hose Service

LASTS LONGER—rayon reinforcement gives top strength, greater resistance to pulling. Cover is sun-, abrasion- and weather-resistant. Emerald Cord far outlasts any other hose made—meaning lowest hose cost per year.

PROTECTS GREENS—rounded rib emerald green cover won't scuff, cut or mark greens.

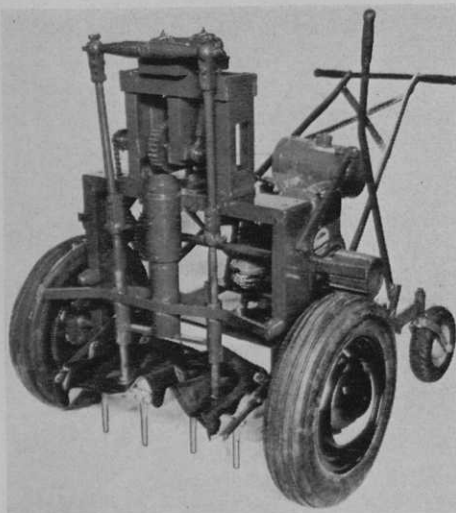
HIGHEST QUALITY—backed by Goodyear's long experience in building hose for every kind of service—and by written guarantee.

GOODYEAR

THE GREATEST NAME IN RUBBER

We think you'll like "THE GREATEST STORY EVER TOLD"—
Every Sunday—ABC Network

Emerald Cord, Wingfoot—T. M.'s
The Goodyear Tire & Rubber Company, Akron, Ohio



THE FERGUSON NIGHT CRAWLER GREEN AERIFYING MACHINE

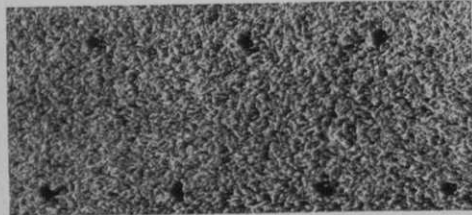
See the improved action of the Night Crawler

Complete hollow-tining at the time cultivation is most needed is now possible. The Night Crawler gives complete penetration regardless of compacted conditions left by driving spring rains and heavy early season play.

Eighteen hole courses can be completely hollow-tined in two days without extra help with less surface disturbance than is normally caused by top dressing. Greens are taken out of play only during actual processing and clean-up which amounts to less than one hour.

Clean cutting tines will not transplant crab-grass and poa-annua from borders. The Night Crawler can be turned around on the green while in operation or will climb steep banks.

PATENT PENDING



Dealers in most sections of the United States
and Canada

Manufactured by
By FERGUSON & SONS.
TURF PRODUCTS DIVISION
EAU CLAIRE, MICHIGAN

... Jimmy D'Angelo, pro ... Robert Trent Jones, architect ... This is one well worth seeing if you're driving along the Atlantic seaboard ... Biggest class of Women's Metropolitan (NY) GA 1,242 handicap card holders are the 50% in the 90-95 scoring class.

Plantation GC, Ft. Lauderdale, (Fla.) new 18-hole course designed and built by "Red" Lawrence, opened ... Michael E. Page is mgr. ... Ralph Blomquist's recent 28-30-58 at Oakmont CC (LA dist.) is lowest ever shot on good course in Southern California ... Chicago Park District courses being modernized and drainage improved ... Realtor talks about putting new course on north side of Indianapolis, Ind. ... Leo Biagetti, promising tournament youngster, leaves Sandusky (O.) range to be another one of many young pros and amateurs going into armed services.

Joe Vilen, formerly asst. to Herman Barron at Fenway CC, now pro at Alder-cress CC, Demarest, N. J. ... Campaigners for public courses can get good ideas by writing Santa Barbara (Calif.) Public Golf Assn., 715 Santa Barbara St., for its folder and information sheet ... Better enclose 9 cents in stamps ... Chicago district supts. Ray Gerber at Glen Oak CC and Bob Williams at Beverly CC report good results in earthworm control from chlordane appli-

PAGE FENCE - Since 1883

• AMERICA'S FIRST WIRE FENCE •



Tailored to Your Needs

• Whether officer or committeeman, you share responsibility for privacy and the protection of both property and persons. For you we have illustrated facts that are tailored to the best interests of your club. They supply what you should know about the varied styles and heights of Page Chain Link Fence and how these protective barriers are expertly erected by experienced, local specialists. Write for DH-142 and name and address of nearby Page Fence engineers and erectors.

PAGE FENCE ASSOCIATION • Monessen, Pa.

Take this Turf Tip...



for a better-playing course


To put your greens and fairways in top condition and keep them that way, feed Vertagreen, Armour's complete, better balanced plant food. Every year more and more greenkeepers turn to Vertagreen when they see how this fine plant food builds thicker, tougher turf that stands up better under heavy play and hot weather. Take a tip from many of the nation's finest clubs . . . feed Vertagreen for a better-playing course.



FEEDS **3** ways

ROOTS 

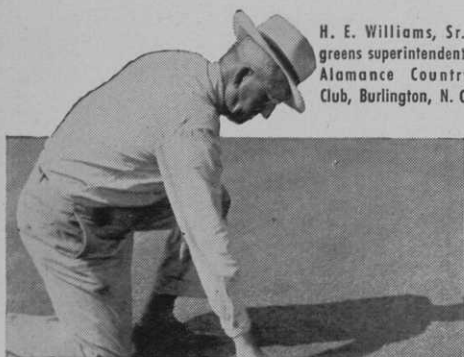
STEMS 

BLADES 

ARMOUR FERTILIZER WORKS
GENERAL OFFICE • ATLANTA, GA.

"Outstanding Greens!"

—say Golfers and Greenkeepers alike



H. E. Williams, Sr., greens superintendent, Alamance Country Club, Burlington, N. C.

Rely on Teamwork of AGRICO and AGRINITE for Finer Greens, Fairways

"From my 46 years' experience, from New Hampshire to Florida, I know that no one element is the cure-all for green and fairway troubles," writes H. E. Williams, Sr., greens sup't., Alamance Country Club, Burlington, N. C. "To my mind, the combination that fills the need best is AGRICO COUNTRY CLUB Fertilizer and AGRINITE, with its twice-as-long life and uniform grass-producing qualities. Golfers and visiting greenkeepers tell me our greens are outstanding in the Carolinas. Last summer they showed almost 100% bermuda with hardly any foreign grass and were uniform in color and texture."

Order Agrico now—it's America's premier Golf Course Fertilizer. Ask your regular supplier or write to The AMERICAN AGRICULTURAL CHEMICAL Co., 50 Church Street, New York 7, N. Y.



AGRICO
COUNTRY CLUB
FERTILIZER

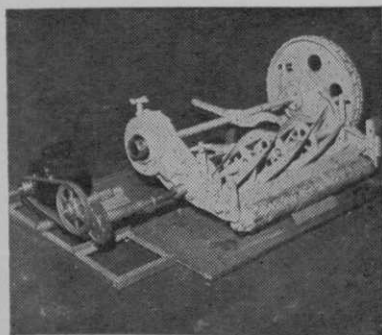
cations last fall . . . Supt. Bill Oats, Arrowhead GC (Chicago dist.) reported promising results from chlordane spray for white grub control last fall.

Martin E. Mattisons were hosts to Hawaiian pros and their wives at Honolulu Commercial Club, Dec. 21 for dinner and pre-Christmas party . . . Al Zimmerman, 17 years pro at Alderwood CC, Portland, Ore., retiring . . . Al's worked hard, wisely and pleasantly . . . Now going to play some golf in different parts of USA and abroad without tournament strain or with the rush he had when he got a few days' leave during his army service.

Ralph Stonehouse signed as pro-mgr. by Galion (O.) CC . . . Everett Nelson, pro at Shreveport (La.) CC, took out Lloyd's \$400 policy against an ace and collected 4 months later with an ace on Shreveport's 162-yd. 9th . . . Took out another \$400 policy and collected 5 months later with ace on the 132-yd. 17th . . . Lloyd's not selling the policy any more . . . Newsiest club publication and pro dept. promotion we've seen lately is 2-page mimeographed job by Harold Clasen, pro at Northland CC, Duluth, Minn.

Phil Hanna in his "Everybody's Business" column in Chicago Daily News writes of South Shore CC as big business . . . New fee course for Dallas, Tex., expected to be in play in August . . . Perry Maxwell is ar-

ATLAS LAWN MOWER LAPPING MACHINE



A compact, light-weight machine for lapping all models of Hand, Power and Gang Mowers! May be easily used on work bench or floor, eliminating the lifting of heavy mowers. The simple height adjustment for the reel shaft may be used from 4 1/2" to 10 3/4". Equipped with several attachments to fit different reel shafts. Metal blocks for rollers. Steel stands to support the mower.

FULLY GUARANTEED

List Price, With Motor \$61.50

List Price, Without Motor 39.00

Write for Bulletin.

Atlas Lawn Equipment Co.

9761 Olive Street Road

St. Louis 24, Missouri



**LET ME SHOW YOU WHY
ROSEMAN GANG MOWERS WILL
SAVE TIME, CUT LABOR COSTS,
GIVE YOU BETTER FAIRWAYS,
AND PLEASE YOUR MEMBERS!**

IMPROVED FAIRWAYS

Next to fine greens members appreciate smooth, uniformly cut fairways that provide a consistently good lie for every shot.

Smooth, uniformly cut putting green surfaces are the result of mowing with roller-type green mowers. This same desirable quality can be had in your fairways by using Roseman Hollow-Roller-Drive Gang Mowers. Give your fairways putting green like turf.

How often have you pressed with your foot just behind the ball to smooth imperfections in the turf to give your club head a good lie? Roseman Hollow-Roller Drive Gang Mowers impart this same action to your entire fairway. Every shot a perfect shot!

LOWER LABOR COSTS

Roseman Hollow-Roller-Drive Mowers mow faster without kicking up in the rear like a hand mower—less time required to mow. Roller design permits overhang of traps—no slow costly hand trimming remains. No protruding side drive wheels permit close cutting around trees. Narrower overall width permits mowing in tight places. Specialized hand equipment use reduced to minimum. Fewer man-hours required to perfectly groom your course. Labor shortages are no serious drawback on Roseman equipped courses.

LESS DEPRECIATION

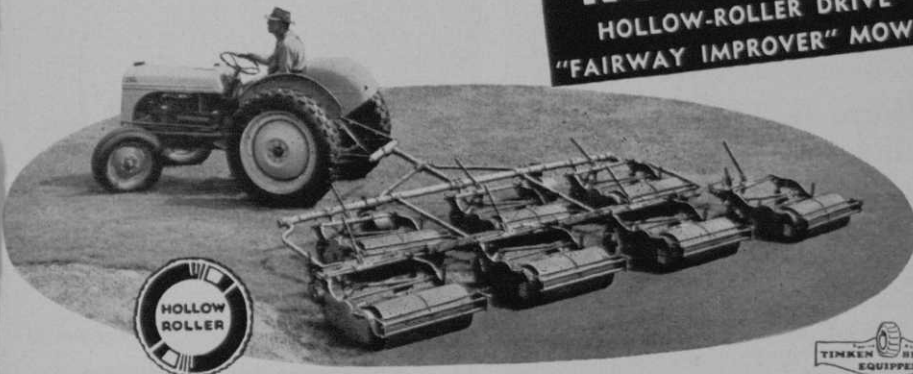
Roseman Gang Mowers are proven to last longer. Top quality and provision in design for low cost replacement of all wearing surfaces make it unnecessary to discard or replace many costly parts. Added length of life means less depreciation—lower cost each and every year.

QUALITY EQUIPMENT

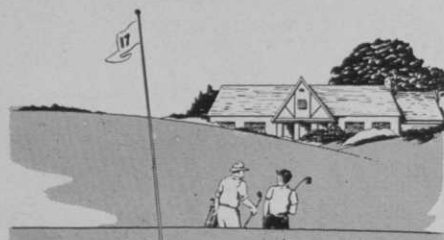
The Roseman Hollow-Roller-Drive Mower is the only gang mower with nonbreakable side frames. No exasperating breakdowns in growing season. Friction-free roller chain drive running in oil bath reduces mower pull, Timken tapered adjustable bearings give perfect reel alignment at all times with less wear and easier pull. Zerk fitted wearing points increase mower life, and further add to ease of pull. Highest quality carbon molybdenum bedknife and chrome nickel cutting reel steels, precision tempered and riveted—not welded—used throughout.

**WRITE, WIRE or PHONE FOR DETAILED
PRICE and DELIVERY INFORMATION TODAY!
PHONE . . . UNIVERSITY 4-1842**

**ROSEMAN
HOLLOW-ROLLER DRIVE
"FAIRWAY IMPROVER" MOWERS**



ROSEMAN MOWER CORPORATION
EVANSTON, ILLINOIS U. S. A.



THE WINNER- on Many Fine Courses **Hyper-Humus**

**Assures
Tough Lasting Turf
Smooth Greens
Fine Fairways**

No wonder HYPER-HUMUS is declared the winner wherever it goes. Used on many of the finest courses in the country, it produces winning results—thick, tough, long-lasting turf. HYPER-HUMUS goes to work at the root of every plant and blade of grass. It promotes healthy root growth, strong stems, and turf that stands wear.

Your Greens Need Spring Treatment

For better-than-ever greens this season, give them a face-lift with HYPER-HUMUS. Ideal also for building new greens, because HYPER-HUMUS remains in the soil, a permanent investment for many years.

There Is Nothing Else Like HYPER-HUMUS

HYPER-HUMUS is unique in preparation and content. Never to be confused with peat moss, this is a real humus, vital, teeming with necessary soil bacteria, yet free from weed seeds and insect larvae.

*Write us for free literature
See your dealer or order direct*

HYPER-HUMUS CO.
BOX 6 NEWTON, N. J.

chitect and builder . . . Jacob J. Merkel, owner and operator of Rich-Maiden course near Kirbyville, Pa., and a genial and energetic promoter of Golf, died in November in a Reading (Pa.) hospital after a 6-day illness . . . Bob Stuppel back at Chicago Athletic Assn. as busy teacher in winter school.

Western Seniors 1951 championship to be played at Edgewater GC, July 12 and 13 . . . Amateurs 50 years and older eligible subject to decision of membership committee . . . Wm. V. Kingdon, 910 E. Kessler Rd., Indianapolis, Ind., is sec-treas. . . Eastern Intercollegiate GA for first time will have its annual championship on individual rather than team play basis when 1951 championship is played at Yale university course, New Haven, Conn., May 12-14.

Western GA suggests that next fall when you have your club's annual caddy dinners you invite mothers of 10 leading caddies . . . It was done at Ravisloe CC (Chicago dist.) . . . Stan Rubel, caddy chmn., presented the 10 mothers with orchid corsages and gifts . . . Scotty Chisholm and Grant Rice super-colossal as Scotty Chisholm and Grant Rice in the Hogan movie . . . Publicity dept. of the picture company already dreaming out its stories on the movie, including one on Glen Ford, who plays Hogan, rapidly developing into super-colossal



. . . it's easy to meet all of your golf course needs if you use the Davis Catalog for 1951. Write for your copy now.

Grass Seed • Chemicals • Equipment

George A. Davis Inc.

5440 Northwest Highway, Chicago 30, Illinois