

C. D. Wagstaff & Co.

GOLF COURSE DESIGN AND CONSTRUCTION

of

**Skycrest, Tam O'Shanter,
Uni. of Illinois Golf Course,
and**

Many other notable courses

Glenview, Ill.

Phone 181

ROBERT TRENT JONES

Member:
American Society of Golf Course Architects

Golf Course Architect

20 Vesey Street

Tel: Rector 2-2258

NEW YORK, N. Y.

Mr. Hillerich is survived by his wife, Elizabeth Kelley Hillerich; an infant daughter, Mary Ward; mother, Mrs. John A. Hillerich, Sr.; brother, John A. Hillerich, Jr.; and sister, Mrs. Stanley Held. He is survived also by four nieces and two nephews.

WEST POINT HOLDS OPEN HOUSE

More than 50 members of the Philadelphia Association of Golf Course Superintendents attended open house at the West Point Lawn Products plant December 12, touring the plant and observing operations which go into making Aerifiers. The Philadelphia group was the first to see the new Green-Lawn Aerifier, which was exhibited at the plant along with an F-G Aerifier equipped with Flexi-press which was on display. Movies and slides of West Point Lawn Products equipment were shown, and a roundtable discussion of aerification progress to date followed. Charles K. Hallowell, Philadelphia County Agent, led the discussion.

Uniformly good results were reported from using the Aerifier to prepare a seedbed in existing turf on fairways and tees. It was stressed that the Aerifier should be passed over an area a number of times when preparing a seedbed. Springtime

aerification may be necessary too. It should be done early—as soon as soil is dry enough to permit the operation. Aerification may be done at the time spring top-dressing is applied so top-dressing materials can get into the holes and the soil brought up by the Aerifier can be used to provide additional material to even up the surface. Superintendents in the Philadelphia area have found that aerification saves money in maintenance. Less artificial watering is required; more of the available rainfall penetrates into the soil. Greater value is obtained from deeper placement of fertilizer. A greater amount of seed becomes established when thorough aerification is done before seeding. Better soil conditions and more vigorous turf reduce disease.

It was emphasized that most golf courses have received too little aerification. Regular aerification to prevent turf troubles is better than just using the Aerifier to bring back damaged turf. Superintendents were of the opinion that the improved operation of the Aerifier with Flexi-press will make aerification practical as a regular part of the maintenance program, and the more convenient operation of the self-powered G-L Aerifier will encourage extensive aerification of greens and limited turf areas.

Congo ADJUSTABLE CAP



Just what you have been looking for ... an adjustable sports cap. Only two sizes, with elastic back, fit all heads. Light summer weight broadcloth in white and pastel tan, blue, red, green. Also a complete line of Visors, Caps and Hats for all sports and outdoor activities.

Write us for Catalog ... Order From Your Jobber
WHY UNDER THE SUN DON'T YOU WEAR ONE?
THE BREARLEY CO., ROCKFORD, ILL.

When it is GOLF PRINTING!

Specialists, for years to many of America's largest and most exclusive courses, can best serve you, too.

**Score Cards - Charge Checks
Greens Maintenance Systems
Caddie Cards - Handicap Systems
Forms for Locker and Dining Rooms
and for the Professional.**

Samples to your club for the asking.

VESTAL CO., 703 S. La Salle, Chicago

ALFRED H. TULL

Golf Course Architect

209 E. 49th Street
NEW YORK 17, N. Y.

GOLF CLUB CLEANING MACHINE

The G. B. Lewis Company, Watertown, Wis., manufacturers of golf ball washers, announce a new item of equipment for pro shops — the Lewis Golf Club Cleaning Machine. This new machine speeds the work of cleaning golf clubs. The club is simply dipped into a tank inside the machine that contains a special cleaning solution and then held against revolving



brushes. Because this new machine eliminates the tedious work of cleaning golf clubs by hand, and does it more quickly, it should have ready acceptance in pro shops. For additional information, write to the G. B. Lewis Co., Watertown, Wis.

GOLF RANGES

MINIATURE GOLF COURSES

We Have a Complete Line of Supplies
Write for prices

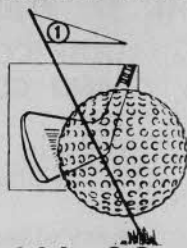
EASTERN GOLF CO.
244 W. 42nd St., Dept. A, New York 18, N. Y.

GOLF BALLS, CLUBS & EQUIPMENT

FOR
DRIVING RANGE
MINIATURE OR
PITCHING COURSE
RETAIL SALES.

CONSTRUCTION &
MAINTENANCE
HINTS.

NORTHERN BALL CO.
3441 N. Claremont Ave., Chicago 18, Ill.



"MIRACLE" CLUBS BID FOR BIGGER 1950 PRO AND PLAYER VOLUME

International Golf Products, 4457 W. Madison St., Chicago, has launched an extensive campaign to acquaint pros and players with the "Miracle" all-in-one golf club. By means of a novel lock screw the single unit, full shot range club offers quick, positive adjustment to all shot positions from No. 1 iron to No. 9 niblick and putter. Equipped with Kush-Lite grips on their Heddon step down shafts the "Miracle" multi-purpose clubs are suggested as especially suitable for beginners until they graduate into pro-fitted clubs, for the occasional golfer and the traveler who wants to swing along the way. Available in 36, 37 and 38 in. lengths "Miracle" clubs also are made for lefthanders. Literature and prices from the makers.

PORTABLE MOWER LAPPING MACHINE

A compact, lightweight machine for lapping all models of hand, power, and gang mowers has been made by the Atlas Lawn Equipment Co., 9761 Olive Street Road, St. Louis 24, Mo. This portable machine may be easily used on the work bench or floor, eliminating the lifting of heavy mowers. It is equipped with several attachments to fit different reel shafts, metal blocks for rollers, steel stands to support the mower and is powered by a Wagner $\frac{1}{4}$ H.P. capacitor motor. The simple height adjustment for the reel shaft may be used from $4\frac{1}{2}$ " to $10\frac{3}{4}$ ".

WILLIAM B. LANGFORD

GOLF COURSE ARCHITECT

Balanced Topographical Design

Member:
American Society of Golf Course Architects
Telephone: KEystone 9-6501
2405 Grace Street, Chicago, Illinois

PRO FINISHED PERSIMMON HEADS

WOODS HAND MADE TO ORDER
WON-PUTT ALUMINUM PUTTERS

Quick Service on All Types of
Repair Work.

Bert Dargie Golf Co.

2883 Poplar Avenue, Memphis 11, Tenn.

EATON APPOINTS "LASH" MEYERS AND CHAS. REINHARDT

Charles A. Eaton Co., Brockton, Mass., whose Etonic "All-weather" golf shoes feature double and triple weather sealing, have recently appointed "Lash" Meyers as their W. Pa. and Virginia representative. Charles H. Reinhardt, 76 Bayside



"Lash" Meyers



C. H. Reinhardt

Ave., Providence, R.I., has been appointed the New England and N. New York territory in which, the past 15 years, he has gained a large pro following as distributor for K. L. Burgett's golf gloves, and, more recently, as representative for Pedersen golf clubs.

SAVE UP TO \$1000 A SEASON
By using ROYAL'S
ALUMINUM DRIVING RANGE CLUB

Longer Life



No Repairs

ONLY \$5.45 EACH.

Now using KUSH-LITE molded grips.

ROYAL GOLF CLUB COMPANY

6411 No. Oakley Ave.

Chicago 45, Ill.

"Lash" Meyers is well-known to the golf trade in the Pittsburgh area as mgr. of the Coleman Golf Corp. An honorary member of the PGA, "Lash" conducts the popular Dapper Dan hole-in-one contest.

Etonic golf shoes won wide pro acceptance the past year with their smartly styled models which keep the feet dry and comfortable in wet going. Etonic's special process of weather proof - vulcanized leather soles and sole seams keeps water from soaking through the outer sole or seams. The rubber gasket mid-sole further protects against water seepage.

Knowing the golf pros are not essentially shoe retailers, the Eaton Co. developed a sound, successful merchandising plan that makes it easy for pros to get into the shoe business profitably with little investment. Pros order a basic four pairs of Etonic "double weather - sealed" golf shoes which are displayed prominently on a free display fixture supplied by Eaton. Orders are filled and shipped the same day as received from the company's large in-stock department. The pros find the display a lively factor in selling Etonics.

The Etonic golf shoe merchandising plan eliminates the necessity of large pro

NYLON Golf Shoe Laces



**100% Profit To Pro Shops
Golfers Need Them**

Stay-Ty made for golfers of tough, strong, nylon. They stay tied . . . waterproof, too.

Costs \$4.50 for display box of 36 pr. Sell for \$9.00 . . . 25c pr.

DISTRIBUTORS
A few territories are open. Write for details.

Order thru your jobber or direct from

Rhode Island Textile Co.
Columbus Av., Pawtucket, R.I.

AMERICA'S BIGGEST SELECTION of GOLF AWARDS



A complete selection of golf trophies, cups, and plaques for tournaments and banquets. Immediate delivery from stock.

Send for catalogue No. G12

UNIVERSAL SPORTS AND AWARDS

Division of Universal Bowling & Billiard Supply
515 S. Wabash Ave. Chicago 5, Ill.
Tele. - W Abash 2-5255



WILLIAM F. GORDON

Golf Course Architect

Member
American Society of Golf Course Architects

Doylestown,
Pennsylvania

Monroe FOLDING BANQUET TABLES

"The Table That Never Disappoints"

IDEAL FOR CLUB AFFAIRS

DESIGNED AND MANUFACTURED EXCLUSIVELY BY

THE Monroe COMPANY INC.

12 CHURCH STREET • • • • COLFAX, IOWA

WRITE FOR Catalog No. 200

R. H. Tractor Wheel SPUDS

quickest to put on or take off. Increase tractor efficiency and cultivate turf that's why more than half the U.S. and Canadian clubs use them. Durable and low priced.

Sample spud and circular on request; advise make of tractor and purpose for which intended.

Immediate shipment. If your Ford or equipment dealer cannot supply, write direct to

R. S. HORNER
Geneva, Ohio

MFR. OF SPUDS, FORD-SON WHEELS, ETC.



• BENT GRASS •

Stolons and Sod. Washington — C1 — and other recommended strains.

HIRAM F. GODWIN

22366 Grand River Ave., Detroit 19, Mich.

shop stocks of various sizes and widths and brings a continuing profit on a small investment. The company officials point out that over 1500 pros throughout the country added substantially to their profits with this plan last year.

SPALDING CORNERS TITLES

Teams from A. G. Spalding & Bros., Chicopee, Mass., plant won Springfield Industrial league and Springfield Commercial league 1949 championships, repeating their clean sweep of 1946. There were 14 teams in the Industrial circuit and 19 teams in the Commercial league.



Back, Spalding's Commercial champs; L to R: Phil Tait, Joe Homon, Walt Solomon, Stan Twardzik, Tom Tait and Walt Chwalek, capt.

Front, Spalding's Industrial winners; L to R: Mike Albano, Chet Wojtowicz, Joe Pajak, Al Guidetti, Occie Fleury, capt., and Fred Witzel.

Golf interest is high the year around in the Spalding plant. One interesting idea worth passing along from the Spalding plant workers is the 50 cents per week during the winter that fellows in various departments toss into a kitty to be played for when the snow melts. It keeps interest blazing in the Hot Stove league and the boys get heated up so they're making book on what they'll do to each other and the outsiders when the shooting's resumed outside.

They've even got signs up at various departments in the shop identifying the golf sharpshooters who work in these locations and politely inviting any other outfit which thinks they're better on a course to state their argument in modest terms of cash.

FLEXI-PRESS FOR AERIFIERS

West Point Lawn Products, West Point, Pa., are in production on their latest development for turf culture, the Flexi-Press, an inexpensive flexible coil for attachment to each spoon of the Aerifier which eliminates the tendency of the spoons to tear the

GOLF COURSE

RENOVATING & CONSTRUCTION

CUSTOM SERVICE

WEED CONTROL

FAIRWAY & GREEN AERIFYING

TRENCHING

DDT TREATMENT

20 years experience.

Completely equipped with modern machines.

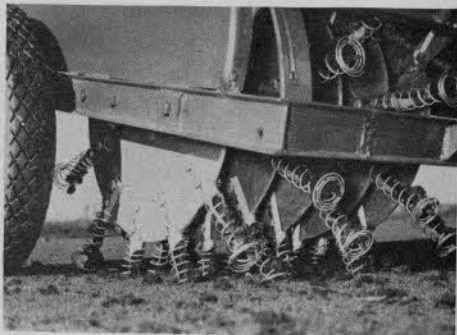
JOHN R. DARRAH

Registered Illinois Engineer

5800 W. Lincoln Highway

Matteson, Ill.

turf under moist soil conditions. The Flexi-Press compresses as the aerifier spoon enters the ground and forms a circular pad which exerts gentle pressure sufficient to keep the turf from tearing or lifting as the spoon is withdrawn from the ground. When the soil core is ejected from the spoon it is broken up by passing through the wire spiral of the Flexi-Press thus eliminating the large soil cores. The new device fits any Aerifier model and does not interfere with penetration depth or operating



speed. Specify spoon size when ordering. Complete information, prices and installation details from the makers.

COMPLETE LINE

MODERN EQUIPMENT and SUPPLIES

for

DRIVING RANGES

MINIATURE COURSES

BUY *Wittek* — BUY THE BEST

DRIVING TEE MATS

for RANGES and GOLF COURSES

48" x 60" — Long Lasting — Reversible — Light Grey — will not scar balls or clubs.

WITTEK GOLF RANGE SUPPLY CO.

5128 W. North Ave.

Chicago 39, Ill.

TORO CONVENTION BREAKS RECORD



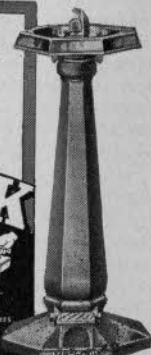
On October 3, 4, and 5, distributors of the Toro Manufacturing Corporation held their annual convention in Minneapolis. Over 145 attended, which made it the largest in the history of the company. Special honors and gifts were awarded to the 20 and 30 year men shown above: R. L. Ryerson, Milwaukee; J. W. Morgan, Des Moines; B. K. Cohee, Cincinnati; J. R. Wilson, Toronto; E. J. Smith, Charlotte, N. C.; C. W. Zaun, Jacksonville, Fla.; T. L. Gustin, Philadelphia; O. O. Clapper, Boston; Norman Ellis, Los Angeles. Plans were discussed for the coming 1950 season and new machines, both in the revolving reel and Whirlwind rotary type, were shown.

Don't hold off ordering
**MURDOCK Outdoor Drinking
Fountains and Hydrants**

Make up your minds quickly.
First 1950 orders in first out.

The Murdock Mfg. & Sup. Co.
Cincinnati 2, Ohio

MURDOCK



for *Velvety Greens*
AND THICK,
STURDY FAIRWAYS



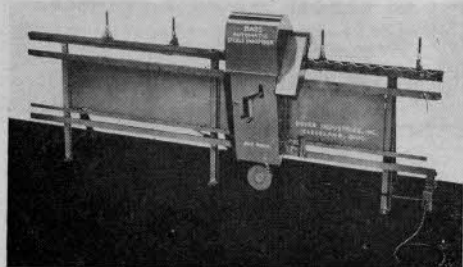
• **WHITNEY'S Super-Refined Lawn Seed** will help you produce and maintain greens and fairways the golfers really praise. Germination tested mixtures for every need. Write —

WHITNEY SEED CO., Inc.
Buffalo 5, N. Y.

Sow **WHITNEY SEEDS**

AUTOMATIC SICKLE SHARPENER

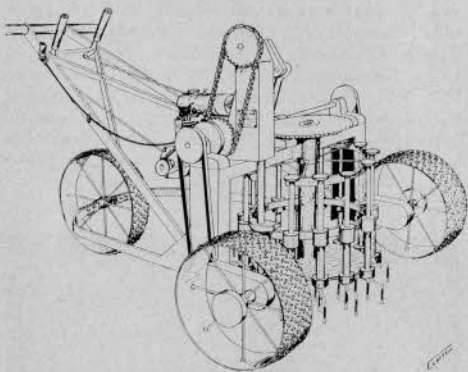
Boyer Industries, 3415 Lakeside Ave., Cleveland 14, Ohio, are making a new automatic mowing machine knife sharpener. The grinding wheel is a standard sickle cone wheel, 5½" O.D., 3½" wide, with 20 degrees crowned angles. The grinding wheel housing functions as a safety guard and also carries away grinding dust and sparks through its extended



down-pipe. The spindle operates at approximately 1400 R.P.M. with V belt drive and has 9" spaced bronze bearings. The automatic mowing machine knife sharpener will grind any length sickle bar up to 7 feet long automatically, at the rate of five 7-foot sickle bars per hour machine time.

"NIGHT CRAWLER"—NEW POWER MACHINE FOR GREENS AERIFYING

The "Night Crawler," a new powered greens aerifying machine manufactured by Ferguson & Sons of Eau Claire, Mich., was designed to allow air, water and fer-



tilizer into soil packed greens. The entire theme in the production of the "Night Crawler" has been built around speed of operation and cleanly cut plugs.

The name "Night Crawler" was selected because this machine aerates and provides the water recesses which this industrious little worm would produce, were he allowed to work on your green.

The rotor of the "Night Crawler" revolves in the opposite direction of the wheels and at the same speed, thus allowing a steady forward movement without tearing the green. A definite plug of earth 3" to 5" long is removed from the sod at intervals of 2¾" to 5½" allowing from 16 to 18 holes per sq. ft. at the rate of 36,000 holes per hour. It can be raised for transportation or partially raised for less penetration by means of lever action.

To assure adequate production Ferguson's will manufacture the machine completely in their own shops, including wheels and tines. The Ferguson organization has been active in lawn equipment distribution since 1932 in the Michigan and Indiana area. A national sales organization is planned through established golf and lawn equipment supply houses.

MAKING THE SWING

(Continued from page 23)

\$25,000 watering system being installed at Lava Hot Springs Foundation, Idaho, on new mineral springs resort golf course . . . Normandy Isle course, Miami, Fla., open for play once again after being closed for renovations . . . Art Gleason reports links in championship condition.

State Univ., Seattle, Wash., will close its golf course permanently sometime this month . . . Course to be used for parking space and playing fields for other sports . . . Chris Arambel, greenkeeper, Southern G&CC, Monterey Park and Rio Hondo GC, Downey, Calif., has taken over greens supt. job at San Gabriel (Calif.) layout where Harry Pressler holds forth as club pro.

Park Supt., Theodore Geisel, reports that despite prolonged drought and heat wave this past summer which parched greens and fairways, that 1949 season at two local Springfield, Mass., many courses was one of best on record . . . Receipts for both courses, Franconia and Memorial, exceeded \$64,000 . . . Seattle (Wash.) Golf Club's chief aim for 1950 is USGA approval on bid for 1952 US Amateur as feature of Seattle's Centennial celebration . . . If successful, it will be first time event has been held north of Portland, and will be its fourth presentation on the Pacific coast . . . Alderwood CC held the event in 1937 and it has been contested at Pebble Beach twice.

Wm. R. Watts, new mgr. of Sunset G&CC, Snell Isle, Fla., announces plans for \$75,000 reconstruction and modernization program which will include new pool and changes in clubhouse . . . Sunset's pro is Joe Guysick, many years club pro at Congress Lake CC, near Akron, O., assisted by Andy Moscarey, teaching pro, and Larry Brady, pro from Utica, N.Y.

Buyers' Service

Check off your Supply & Equipment Needs. Tear out and mail this sheet to *Golfdom*, 407 S. Dearborn St., Chicago, Ill., or use convenient card. You'll get prices and literature direct from the sources of supply.

Golf Course

Aerifiers: fairway ☐ green ☐
Architects (course — house)
Arsenate of lead
Ball washers
Bent grass stolons
Brown-patch preventives
Compost mixers
Compost spreaders
Crabgrass control
Cultivators: f'way ☐ green ☐
Drinking fountains
Electric Plant (Portable)
Fencing
Fertilizers
Flags (greens) ☐ Flag poles ☐

Flood lights
Fungicides
Fungicide applicators
Golf Course Const'n Engineers
Hedge trimmers
Hole cutters
Hose, 3/4" ☐ 1" ☐
Humus
Insecticides
Lapping-in machine
Leaf burning cart
Leaf rake & pulverizer (power)
Miniature Course Const'n ☐
Miniature course matting
Mowers: putting green ☐
 whirlwind ☐ tee ☐
 fairway ☐ rough ☐ hand ☐
Mower grinders
Peat Moss
Playground equipment

Pumps
Putting cups
Rollers (water filled)
Scythes (motor driven)
Seed: fairway ☐ green ☐
Sod cutter
Soil cond. material
Soil screeners ☐ Soil shredders ☐
Sprayers: power ☐ hand ☐
Spikers: greens ☐ fairway ☐
Sprinklers: f'way ☐ green ☐
Stiles (over fence)
Sweepers (power or hand)
Tee markers
Topdressing
Tractors
Tractor wheel spuds
Turf Pluggers
Water systems, fairway
Weed chemicals

Pro Shop

Bag towels
Bags: canvas ☐ leather ☐
Bag carts, for players
Bag Support (Individual)
Ball cover stock
Balls: Regular ☐ Range ☐
Ball markers ☐
Ball retriever
Bandages, adhesive
Buffing motors
Calks, for shoes
Caps and hats
Clubs: Woods ☐ Irons ☐
 Putters ☐
Club display racks
Club head covers

★
Club repair supplies
Club separators for bags
Cushion-sole Inserts
Detachable cleated shoe plates
Dressing for grips ☐ bags ☐
Golf gloves
Golf Grips: Leather ☐
 Composition ☐
Golf Practice Devices ☐
Golf Practice Glove
Golf shoes
Grip preparation for hands
Handicap boards
Handicap racks ☐ cards ☐
Luggage (leather)
Mechanical Golf Ball Retriever
Miniature course surfacing

Pencils
Portable motor tool
Practice driving nets
Preserver for leather
Pro accounting book
Range ball washer
Score cards
Shoe spike wrench
Sportswear: Shirts ☐ Socks ☐
 Sport jackets ☐ Rain jackets ☐
 Windbreakers ☐ Slacks ☐
Tees (wood) ☐ plastic ☐
Tee mats ☐
Tees (rubber) for driving mats
Teeing device (automatic)
Tennis nets
Trophies

Club House

Air conditioning equip.
Athletes foot preventives
Bath mats
Bath slippers
Bars
Charcoal cookers (outdoor)
Disinfectants
Fire protection equipment

★
Floor coverings
Folding Table (Banquet)
Furniture
Kitchen equipment:
Dish washers
Frozen food storage
Ice cube machines
Ovens ☐ Food warmers ☐
Ranges ☐ Refrigerators ☐

Slicing machines
Link Type Mats ☐
Lockers
Runners for aisles ☐
Rugs ☐
Showers ☐ Shower mixers ☐
Step treads
Towels: bath ☐ face ☐
Uniforms

Send information

to: Name _____ Club _____

Club _____ Address _____

Town _____ Zone () State _____

LET GOLFDOM HELP YOUR OFFICIALS MAKE THE MOST OF 1950

Each month GOLFDOM presents the latest, most practical ideas on golf club administration, management, upkeep and service ... for time, labor and money-saving guidance of your officials and department heads. Help the *right men* at your club do the *job right*. Send in the form below so we can get them "on the beam".

— FILL IN THE FORM BELOW — THEN MAIL THIS PAGE TO —
GOLFDOM, 407 SOUTH DEARBORN STREET, CHICAGO 5, ILLINOIS

Name of club: _____ ☐ Private
☐ Daily Fee ☐ Muny NUMBER OF HOLES _____
 Address _____ Town: _____
 Zone () State _____ By _____ Club Position _____

President's:
 name _____ (Zone _____)

Add: _____ Town: _____ State: _____

Secretary's:
 name _____ (Zone _____)

Add: _____ Town: _____ State: _____

Manager's:
 name _____ (Zone _____)

Add: _____ Town: _____ State: _____

Green Chrnm's:
 name _____ (Zone _____)

Add: _____ Town: _____ State: _____

Greenkeeper's:
 name _____ (Zone _____)

Add: _____ Town: _____ State: _____

Professional's:
 name _____ (Zone _____)

Add: _____ Town: _____ State: _____

Mighty mite of Golf, Bantam Ben Hogan, the man whom doctors feared might not pull through severe and multiple injuries suffered in automobile accident last Feb. 2d, let alone swing a club again, is starting to hit them around the links in good style . . . starting with LA Open Ben is getting back into the tourney circuit to give the boys another taste of nerve control and courage that have carried him over so many rough spots.

Henry Cotton in charge of Penfold pro-only golf ball promotion for North and South America . . . Cotton also signed up with George Nicoll golf clubs . . . Henry says he hasn't quite retired from tournament play but the gypsy grind is for the younger players and he'll pick his spots — he may be over here this spring . . . He spent the early part of the winter in South America and at his resort golf establishment at Monte Carlo.

Fred W. Procter, one of game's best known writers, died Nov. 29th, following a lengthy illness. Fred, a native of Iowa, is survived by his widow, Louise, two sisters, two stepdaughters, and one stepson.

Stanley Van Dyke of Beverly and South Shore country clubs, Chicago dist., installed as Pres. of CDGA early in Dec. . . . Van Dyke was instrumental in bringing Chicago Victory Open to Beverly in 1943 . . . This was first of six nationally important tourneys which, coupled with assn's. charitable activities, raised \$140,000 to build golf courses and putting clocks for veterans' hospitals . . . Van Dyke also worked with USO and CDGA member clubs to furnish free golf privileges at private and public courses for servicemen during the war.

Palm Beach (Fla.) GC opened its 53d season Dec. 1, 1949, with Miss Beth Fenn starting her 25th year as home pro . . . "Real" veteran from point of service will be Fred Austen, asst. caddiemaster and shop man, who is starting his 50th consecutive year at club . . . Newly organized Oregon City (Ore.) CC will take over operation of course three miles southeast of city within next year . . . Practice putting green gives way to new swimming pool at Saginaw (Mich.) CC.

Jack Kennan moves from Exec. V-P of WGA to V-P and Dir. of Sales for Society of Visual Education, oldest and biggest producer of slidefilms for schools . . . Joe Hogan, Kennan's understudy for past year as Dir. Promotion appointed WGA Exec. Sec'y. . . . Roland G. McGuigan, adviser to Evans House and counselor of men Northwestern U., appointed Educational Dir. Evans Scholars Foundation . . . Peninsula golf course project shaping up rapidly under watchful eye of Earl E. Edmunds, near Long Beach, Wash. . . . Paul Yerkes of Seattle, who has spent life-time at ama-

teur golf, will be in charge of new nine-hole course.

E. Reeve Talbot appointed mgr. of Broadmoor GC, Seattle . . . Southington (Conn.) GC, private nine-hole, has been sold to Hubert S. Higgins . . . Univ. of Okla. has awarded \$84,000 contract to Perry Maxwell and associates for construction of new 18-hole course . . . Completion date for course has been set for Sept., 1950 . . . Terry McHugh, former greens supt. of Harding Park, San Francisco muny course, passed away suddenly Nov. 1st at his home . . . He is survived by his widow, Ethel, a daughter, Mrs. Ethel Bostock, and son, Daniel McHugh . . . His brother, Tom, is pro at Nibley Park GC, Salt Lake City . . . Flossmoor CC, Chicago dist., to open \$75,000 pool July 1, 1950.

Fresno, Calif., currently considering development of new muny course at Fresno Air Terminal to alleviate present overcrowded condition at local links . . . Controlling interest of Overlook GC, Lancaster, Pa., purchased by Dr. S. K. Keiser, who will continue operating as public course . . . St. Petersburg, Fla., to have four courses with re-opening of Shore

(Continued on page 82)

ROBERT BRUCE HARRIS

Golf Course Architect

Member: American Society of Golf Course Architects

664 N. Michigan Ave.

CHICAGO 11, ILL.

Phone: WHitehall 4-6530

CREEPING BENT STOLONS Old Orchard Turf Nurseries

R. R. Bond, Prop.

Box 350

Madison 1, Wisconsin

The Greens are the Foundation of all Successful
Golf Courses.

1914 FULNAME 1950

Fulname Golf Ball Marking service provides the best in ball marking today. Prepare now for early sales.

GET THE BEST! GET FULNAME!

THE FULNAME CO. CINCINNATI 6, OHIO

CLASSIFIED ADS

Rates: Minimum insertion \$4.00 for 20 words; additional words 20c each. Bold face type, 25c. per word. Classified cols. reserved for help or services wanted and for sale of used equipment.

Assistant wanted — April 1 to Nov. Metropolitan district. Young tournament golfer preferred. Excellent opportunity to learn shop and teaching experience. State experience and salary in first letter. Address Ad 101 % Golfdom.

WANTED — Greenkeeper at excellent small-town club, 65 miles west of Chicago. Excellent living quarters which can be used from March through December 1. Salary to be paid on an annual basis. Salary open; to depend on experience and ability of applicant. Young man with good experience preferred. Job available March 1. Please make application stating experience and supply references. Address Ad 102 % Golfdom.

Club Manager desires position. Years of experience in complete management. Authority on finest of food, service and handling help. Best of character and references. Will consider food and bar concession in first class club. Address Ad 103 % Golfdom.

WANTED TO BUY OR LEASE — Nine hole golf course, public or private. Eastern preferred. Address Ad 104 % Golfdom, 20 Vesey St., New York 7, N. Y.

Pro or Asst. 16 yrs. experience. Experienced in golf course maintenance and construction work. Will go anywhere. Available immediately. Address Ad 106 % Golfdom.

Pro, Class "A" member P.G.A., first class shop salesman, repairman and excellent instructor. Best habits. Married. Go anywhere. Address Ad 107 % Golfdom.

Wanted — good experienced Club Manager and wife to take over complete club responsibility. Also wanted — Pro with good references. Dixon Country Club, Dixon, Illinois.

Professional available, exceptional qualifications, excellent instructor, good merchandiser. Technical knowledge of greenkeeping, fine businessman, manager. Married. University graduate. Address Ad 108 % Golfdom.

Assistant Pro Wanted. Ambitious young man — good opportunity for one willing to work. Guaranty of \$200.00 per month during playing season and all fees from lessons. Outstanding midwestern club with large membership. Give detailed experience. Address Ad 109 % Golfdom.

Wanted — Golf ball molds trimmer, stripper, winding machine, presses, stamper, etc. for recovering. Address Ad 110 % Golfdom.

Complete business management of moderate sized golf club offered by pro and wife with very successful experience, highest recommendations. Pro has 20 years experience as excellent teacher, player and promoter of club interests and successful practical experience in course maintenance. Wife successfully and pleasantly operates clubhouse. Highest recommendations, good judgment, thoroughly experienced and personalities that help make the club attractive. For full details write Ad 111 % Golfdom.

Pro-Greenkeeper, Scot, age 47, single, sober and reliable, good player, 1st class instructor, thorough knowledge of turf and soil, desires to make connections with club, any location, middle-sized town preferred. Address Ad 112 % Golfdom.

Pro-Greenkeeper with excellent record in golf instruction and golf shop operation and in golf course construction and maintenance seeks opening where valuable experience in practical, economical course maintenance and attentive, beneficial service to members is needed. Knows pro shop operation for most pleasing and efficient service to members. At present club I helped develop more class A players than total players in handicap rack when employed. Have built courses, developed them into maturity and maintained them economically. PGA member—excellent credit standing—finest references. Married. Available Jan. 15. Address Ad 131, % Golfdom.

CASH PAID for OLD GOLF BALLS!
No Driving Range Culls Wanted — but we buy—sell—trade old golf balls. For quotations write:
Northern Golf Ball Co.,
3441 N. Claremont Ave., Chicago 18, Ill.

PRO WANTED by Woodmont CC, Bethesda, Md. Must be highest type gentleman and businessman who will do excellent job of teaching, operating shop, promoting golf enthusiasm of members and representing club in play at local tournaments and a few major events. Pleasant personality and sound judgment are essential. Splendid opportunity for right man at new establishment of a large club of fine membership. Address all communications to Leopold V. Freudberg, Woodward Bldg., Washington, D. C.

CADDYMASTER WANTED by midwestern club. He must be good at recruiting, training and supervising boys. Will have fullest cooperation of top grade pro on this job. Attractive pay for the man who fits. Address Ad 116 % Golfdom.

PRO-GKPR, with successful experience in teaching, shop business, economical course maintenance and promotion of interest and play, seeks location where club needs live business operation. Wife does A-1 job of managing clubhouse. Available for pro-only or combination job. Address Ad 117 % Golfdom.

Pro or Greenkeeper or Both for 1950. Twenty years experience. Excellent references. Available March 1st. Eastern location preferred. Address Ad 118 % Golfdom.

Greenkeeper — Age 24, experienced, competent. Graduate 2-Yr. fine turf course Univ. of Mass. Prefers position in New England States. Address Ad 119 % Golfdom.

DRIVING RANGE MANAGER — Golf Pro with Driving Range experience for summer of 1950. Good opportunity for reliable man with business ability. Write for interview, giving particulars and references to Revere Airport, Revere 51, Mass.

WANTED TO LEASE OR BUY — Going Country Club or Resort. Must be active. Address Ad 120 % Golfdom.

WANTED — Working greenkeeper, Hannibal Country Club. Salary \$225.00 Month with golf shop concession. Address A. R. Wade, 216a Bdwy., Hannibal, Mo.

USED GOLF BALLS WANTED
Highest prices paid. Write us
for quotations.

WITTEK GOLF PRODUCTS
5128 W. North Ave., Chicago 39, Ill.

Greenkeeper desires position with club insisting on highest standards of course and grounds maintenance. 20 yrs. experience includes all phases of turf production and protection, strain development, turf nursery, chemical treatment, feeding, watering, etc. Maintenance of pools, bowling greens, athletic field, hockey, skating and curling rinks has been part of my duties. Thorough knowledge of machinery and equipment. Good habits—finest references. Can handle men—most of working crew with me for fifteen years. Member Midwest and Nat. Greenkeepers Assns. 41 yrs. old—married. Midwest club preferred. Available immediately. Address Ad 135, % Golfdom.

Father and son, pro-greenkeeper team with 26 yrs. combined experience in golf shop operation, teaching, activities promotion—and in all phases of course and grounds maintenance. Can offer smooth running, efficient, economical service to club that wants golf and greens Dept. in able, alert hands. Address Ad 137, % Golfdom.

AVAILABLE — JANUARY — GENERAL MANAGER — PROFESSIONAL — GREENS SUPT. Age 42. Family. Fine background golf. 20 years club management — promotion — bar — house — rehabilitation golf projects long associated with failure training — experience — valuable progressive club having management difficulties. Possesses initiative, ready assume responsibilities, apply himself thoroughly. Present compensation secondary to recognition of ability when proven. Address Ad 114 % Golfdom.