

MORE COVERAGE PER DOLLAR

With
**NELSON
SILVER TOP
VALVES**

These quick coupling Silver Top valves speed work and save labor. Available in capacities up to 125 gallons per minute.

and
**RAIN BIRD
No. 80 Special
SPRINKLERS**

Rain Birds are simple, rugged and trouble-free. Full or part circles. Available in capacities up to 125 gallons per minute.

For Information Contact

East of Denver

L. R. NELSON MFG. CO., INC., PEORIA, ILL.
Denver West

RAIN BIRD SPRINKLER MFG. CORP., GLENDORA, CALIF.

will try it, they will see that it is not toxic, it does not layer; and I feel they eventually will incorporate it into a part of their routine program.

References:

"The Soil and the Microbe"—Waksman and Starky; John Wylie and Sons, New York, 1931.

"Fundamentals of Soil Science"—Miller and Turk; John Wylie and Sons, New York, 1943.

"Grass"—U. S. Dept. of Agriculture; U. S. Gov't Printing Office, Washington, D.C.

"Paper Presented at the Virginia-Carolinas Section FRPS, Durham, N. C., November 4, 1949 by A. C. McIntire, Chief of the Regional Forestry Division, U. S. D. A., Soil Conservation Service.

POTASSIUM CYANATE

(Continued from page 40)

strength, improved the kill in most all cases—without injury to turf grasses.

Home-owners can use their small hand sprayers or sprinkling devices and greenkeepers their power equipment with equally satisfactory results. Sprays applied with 30 or more pounds pressure gave slightly better results. Solutions sprinkled had to be maintained at $\frac{1}{2}$ to

$\frac{3}{4}$ strength to equal the kill obtained by spraying.

The best time to apply potassium cyanate is in the spring, late summer and early fall. Poorest results were obtained during periods of extreme drought.

Principal turf varieties of both the north and south withstood extreme doses in tolerance tests. Bluegrass, Bermuda, St. Augustine, bents, fescues and others withstood as much as 64, 128 and 256 pounds of potassium cyanate per acre. This is 4, 8, and 16 times the amount required to kill crabgrass. Grasses growing under favorable conditions were not injured other than tip discoloration and many recovered within 5 to 10 days. Bents and fescues required 20 to 30 days for full recovery when extreme doses were used, but were not permanently injured, indicating a wide range of tolerance for many principal grasses commonly used as turf in the United States and Canada. With normal doses of 8 and 16 pounds, discoloration cleared up within 10 days and only discoloration from dead crabgrass, other weeds and the dead tips, was noticeable after the first cut following treatment.

Negotiations with several leading firms interested in formulating potassium cya-



ALBERT A. LINKOGEL
offers you his 22 years' experience in development of grasses.

Also distributors of fungicides and fertilizers.

ARLINGTON C-1 STOLONS
CONGRESSIONAL C-19 STOLONS
COLLINS C-27 STOLONS

Can show references of the purity of our strains.

LINK'S NURSERY, INC.
the TOPS in TURF!

Available for Fall Delivery!

LINK'S NURSERY, INC.
Route 1, Conway Road, Clayton 24, Mo.
Please Send Information and Prices on:

- ☐ Arlington C-1
☐ Congressional C-19
☐ Collins C-27

NAME.....

ADDRESS.....

CITY.....STATE....

LAWN MOWER STATIONARY BLADES



We make these blades in several styles to fit the different makes and types of Lawn Mowers—including the small Hand Trimmer—Hand and Tee Mowers—Putting Green Mowers—Power Mowers and the large Gang or Fairway Mowers. Best quality knife steel, electric furnace heat treated to insure long wear and fully guaranteed to give complete satisfaction. You save important money buying direct from manufacturer.

Price sheet on request or we will quote price for your blade order.

JONES MOWER & EQUIPMENT CO.

2418 Grasslyn Avenue, Havertown, Pa.

We pay the postage on all orders of \$10.00 and over.

nate have recently been announced by American Cyanamid Co. Information regarding prices, package size and other details can be secured by writing to these firms.

PROS HELP LAPORTE

(Continued from page 37)

bition July 2 involving Pros Jimmie Thomson and Marilyn Smith of the A. G. Spalding and Bros., Inc., staff. Also in the exhibition were Herman (Sonny) Uebele, son of the Beechwood pro, and Rudy Boyd, son of the junior program's initiator.

Young Uebele and Boyd, age 15 and 16 respectively, are topflight golfers in their own right and it was felt that interest in the program could be greatly stimulated if people could see how well junior golfers go around with pros. A \$1 admission charge was made for adults while children were admitted free to the exhibition.

The two young stars didn't disappoint the crowd of more than 500 which turned up to watch the show. Uebele and Thomson beat Boyd and Miss Smith by 14 points in a low-ball, low-aggregate match but Boyd's medal was 75, just three over Thomson's par-equaling 72. Uebele had a 77 while Miss Smith carded an 85.

Both Thomson and Miss Smith endeared themselves to LaPorte area fans with their willingness to demonstrate shots, sign scorecards and answer questions.

What pleased local fans, though, was the high praise the pros paid to the junior program.

"You have a fine program here," Thomson said. "I know of no finer thing you could do for your youngsters."

Miss Smith, who readily confessed a fondness for juniors, echoed his words.

The money raised by the exhibition was put into the fund to purchase clubs for the junior players. These clubs plus the renovated ones are placed in a pool and those wishing to use them for practice play or lessons may do so on a "library" plan—the youngsters sign for their clubs and then turn them in following play.

Under such a system a number of sets can be made available and should last for several years before replacements are needed.

A yearly exhibition series is planned for the future to help maintain a fund for equipment.

Mayor Taylor Ray of LaPorte and Sheriff Norman Reeg of LaPorte county have backed the program enthusiastically. Both have recognized its contribution to the fight against juvenile delinquency—an important part of any community's program.

Experience has shown that the children have learned a healthy respect for the golf course. The local pros say they are easier on the courses than the novice adult. With such encouragement, Boyd plans to lower



Scalding Hot one minute...Ice Cold the next! What this shower needs is a POWERS Thermostatic Shower Mixer

That's right. Surest way to end shower bath complaints and possibility of accidents is to use POWERS thermostatic shower mixers. They're SAFE both ways... give sure protection against scalding or jumpy shower temperatures caused by **pressure or temperature** changes in water supply lines. Circular H48 describes the safest shower mixer made. Write for a copy. THE POWERS REGULATORY CO., 2799 Greenview Ave., Chicago 14, Ill. Offices in principal cities.



CREEPING BENT STOLONS

Slocum, Rhode Island
Atwater, Ohio
Farmington, Iowa

Arlington
Old Orchard
Congressional

Winnsboro, Texas
Sebastopol, California
Madison, Wisconsin

Arlington
Old Orchard
Old Orchard & Arlington

No sod or left over bent. Every stolon fresh, virile stock and less than one year old. True to strain, no mixture of other bents or grasses. No weeds—not even clover. Quicker service, fresher stolons and lower transportation charges. Every shipment carries state inspection certificate.

Please address all inquiries to

Old Orchard Turf Nurseries

R. R. Bond, Prop.

P. O. Box 350

Madison 1, Wisconsin

THE GREENS ARE THE FOUNDATION OF ALL SUCCESSFUL GOLF COURSES

the age requirement to nine next year which will give the youngsters an even earlier start in the game.

If the program is a success in LaPorte, a city of 17,000, it should be a success in larger cities. The combination of play on a municipal and private course was not hard to establish since Boyd is an Elk. The program has the backing of local people and schools because it is open to all youngsters regardless of race, color or creed. Above all it is self-supporting—an important consideration in these days of high prices.

FERTILIZER SOLUTION

(Continued from page 33)

greenkeeper, based on amount of plant food required to obtain growth results desired. This can be calculated by simple arithmetic.

Fertilizer in Terms of Weight

Being accustomed to handling dry fertilizers by unit of weight it may become confusing when we start dealing in terms of quarts, gallons and barrels. Thinking in terms of liquid measure we may lose track of our old friend—The Unit of Plant Food. One simple solution to this problem is to disregard the liquid measure and continue to think in terms of weight,

which is still the only official and practical method of specifying quantities of fertilizers whether they are in gas, liquid or solid form. The water in fertilizer solutions is only used as a carrier of our old friend—The Unit of Plant Food. The approximate weight of one gallon of a 20 unit concentrated fertilizer solution such as a 10-6-4 or 5-10-5, is 10 pounds. If we dilute one gallon of a 10-6-4 solution in 50 gallons of water we are mixing 10 pounds of 10-6-4 fertilizer in 400 pounds of water. The matter then becomes simplified to determine the rate of application of the diluted solution. If we wish to make an application of 2 pounds of 10-6-4 fertilizer per 1000 sq. ft., the 10 pounds of fertilizer in the 50 gallons of water will be applied on 5000 sq. ft. of turf, at rate of 10 gallons per 1000 sq. ft. This will give us an application of .2 lb. of nitrogen, .12 lb. of phosphoric acid and .08 lb. of potash per 1000 sq. ft. A rather light application but in most cases sufficient during summer months.

We must always bear in mind that the plant food in fertilizer solutions is quickly available to plants. Where we would normally apply $\frac{1}{2}$ lb. of nitrogen per 1000 sq. ft. and this nitrogen is derived from a fertilizer containing a substantial amount of water insoluble organics then it would

You'll improve your course

with SKINNER irrigation

Individual units or complete "tee to green" systems. Precision made of brass, bronze and stainless steel parts to assure dependable performance for years. Write today for specifications. THE SKINNER IRRIGATION CO., 415 Canal St., TROY, OHIO



"Pioneer and Leader in Irrigation for Nearly Half a Century"

AMERICA'S BIGGEST SELECTION of GOLF AWARDS



A complete selection of golf trophies, cups, and plaques for tournaments and banquets. Immediate delivery from stock.

Send for catalogue No. G12

UNIVERSAL SPORTS AND AWARDS

Division of Universal Bowling & Billiard Supply
515 S. Wabash Ave. — Chicago 5, Ill.
Tele. - Wabash 2-5255



DRIVING RANGE OWNERS

I need your cull range balls to rebuild for store trade. For a limited time I will pay 25c a doz. and freight from any point in the U. S. providing balls are shipped as follows: 50 doz or less per bag, double sacked, and shipped as scrap rubber by motor freight to:

EVERETT WHEATON
NORTHERN GOLF BALL CO.

3441 N. Claremont Ave., Chicago 18, Ill.

be advisable when applying fertilizer solutions to limit the nitrogen to about one-half that amount or $\frac{1}{4}$ lb. per 1000 sq. ft. The other $\frac{1}{4}$ lb. can be applied later as needed.

Calculating Dilute Solutions

Sometimes it becomes necessary to know the analysis of the dilute solutions we use, to determine a safe concentration that can be applied to turf without injury. This can be easily calculated as by following example. We shall dilute 1 gallon of concentrated solution analyzing 10-6-4 in 50 gallons of water. Converting liquid measure to weight, we have 10 lbs. of 10-6-4 fertilizer or 1 lb. N, .6 lb. P_2O_5 , and .4 lb. K_2O in 400 lbs. of water. One lb. N is .25% of 400, .6 lb. P_2O_5 is .15% of 400 and .4 lb. of K_2O is .1% of 400. So the analysis of the solution would be .25-.15-.1. Knowing the safe strength of a solution that can be applied to turf without injury we can calculate the amount of water soluble fertilizers or concentrated solutions to add to any quantity of water by knowing the analysis of the materials. For instance, it has been observed that a solution of sulphate of ammonia analyzing .25-0-0 has a burning effect on turf if applied during hot weather. A solution of urea of same strength can be applied

to turf anytime without injury. Urea solutions of .45-0-0 have been used during summer months in combination with mercurial fungicides without any turf injury, however it is safer to stay below this figure.

One disadvantage of fertilizer solutions is the relatively high cost of materials prepared specially for solutions. One of the reasons for the higher cost of solution materials is that technically clean chemicals are used in their formulation to make solutions free of insoluble impurities. In cases the higher cost of solutions can be offset by the saving on cost of application, especially when only light applications of plant food are needed. The greenkeeper can ascertain what the comparative costs of fertilizer applications are in using either solutions or dry applications by comparing costs of materials and expenditures in labor in applying them.

Fertilizer solutions may some day have an important role in our turf fertilization programs but as it appears now their use will be limited; one reason being that water insoluble organic fertilizers, well recognized as being essential to the production of fine turf, cannot be applied in solution.

The use of fertilizer solutions in turf

Monroe FOLDING TABLES

And Folding Chairs

DIRECT PRICES to GOLF CLUBS PARKS, etc.

WRITE FOR CATALOG NO. 200

THE Monroe COMPANY INC.
12 CHURCH STREET COLFAX, IOWA

When it is GOLF PRINTING!

Specialists since 1912 to many of America's largest and most exclusive courses.

Score Cards - Charge Checks
Greens Maintenance Systems
Caddie Cards - Handicap Systems
Forms for Locker and Dining Rooms
and for the Professional.

Samples to your club for the asking.

VESTAL CO., 703 S. La Salle, Chicago

maintenance is a field that should warrant more study and experimental work from our Experiment Stations, especially in how the more soluble phosphate compounds used in solutions compare with the calcium phosphates commonly used in dry fertilizers in phosphorus availability and phosphate fixation in soils. Also more study could be given to developing more efficient and economical ways of preparing solutions as it is apparent there are great labor saving possibilities in the use of solutions.

NEWS from the MANUFACTURERS

TO ED SULLIVAN FROM WALTER HAGEN



Ed Sullivan (left), newspaper columnist and star of the television show, "Toast of the Town," receives a set of golf clubs from Walter Hagen (right), during a recent visit to Detroit. In the center is Benson Ford, vice-president of Ford Motor Company and general manager of the Lincoln-Mercury Division. The clubs were the gift of the Detroit Lincoln-Mercury dealers and were presented to Mr. Sullivan at a dinner given in his honor during his visit to Detroit.

WALL SHOOT'S 30th ACE

Arthur Wall, Jr., asst. to Tom Kerrigan at Siwanoy CC, Bronxville, N.Y., holed his 30th ace, July 18 on Siwanoy's 197-yd. third. Wall hit the shot with a Bristol No. 4 iron. The same round he was 4 inches from the 183 yd. 13th with his tee shot. The 28-year-old sharpshooter won the national intercollegiate driving championship in 1948 with bangs of 290, 288 and 278 yds. He was capt. of Duke university's golf team in 1949, the year of his graduation. He's won two Penn State amateur titles, the Pan-American Open and three times was runner-up in the Southern Conference

WILLIAM F. GORDON

Golf Course Architect

Member

American Society of Golf Course Architects

Doylestown,
Pennsylvania

WILLIAM P. BELL AND SON

GOLF COURSE ARCHITECTS

Member: American Society
of Golf Course Architects

544 Sierra Vista Avenue
Pasadena 10, California

ROBERT BRUCE HARRIS

Golf Course Architect

Member: American Society of Golf Course Architects

664 N. Michigan Ave.
CHICAGO 11, ILL.

Phone: WHitehall 4-6530

ALFRED H. TULL

Golf Course Architect

209 E. 49th Street
NEW YORK 17, N. Y.

C. D. Wagstaff & Co.

GOLF COURSE DESIGN AND CONSTRUCTION

ON GUARANTEED CONTRACT IF DESIRED

Skycrest, Tam O'Shanter,
Uni. of Illinois Golf Course,
and

Many other notable courses

Glenview, Ill. Phone GI-4-2400

Don't Let CRABGRASS
Spoil the Beauty of Your
Fairways this Year!

use

WEEDANOL
CYANOL (PC)
Crabgrass Killer

ASK YOUR DEALER

ASSOCIATED CHEMISTS, INC.
North Collins, N. Y.

championship. He spent three years in the Air Force. Horton Mfg. Co. has signed him on its Bristol advisory staff figuring, with plenty of foundation, that Wall is due to be one of the game's shining stars.

ALLIS-CHALMERS REAR ENGINE TRACTOR



A rear engine mounted farm tractor with an industrial mower has proved to be economical for the Raymondville (Tex.) CC. By concentrating 79.2 per cent of its weight on the drive wheels this Model G Allis-Chalmers tractor delivers maximum power to the drawbar.

ON SPALDING PRO RUNS

Bobby Litton, well known in pro golf in Pacific Northwest, and with Spalding's Portland and Seattle stores from 1938 to 1941, has returned to the Spalding staff as pro representative for the Pacific Northwest. Bobby was born in Kansas and went to the Pacific Northwest to become a caddy, and eventually a master pro, shortly after Lewis and Clark explored the rough in that territory, according to local legend concerning the likeable and lively Litton.

Aaron W. Jackson, capt. of Tennessee University golf team in 1939 and '40, now is representing Spalding in northern Georgia, Alabama and Tennessee.

OKLAHOMA-TEXAS TURF MEET COMPILED BY WEST POINT

Addresses by the 26 speakers at the latest Oklahoma-Texas Turf Conference were recorded by Tom Mascaro of the West Point Lawn Products Co., West Point, Pa., as one of the company's very valuable jobs in reporting short courses, and now are available in a limited edition from the West Point company.

The West Point company also has issued recently an exceedingly interesting and

SNOW-PROOF

Get your share of the profitable SNOW-PROOF business. Nationally advertised. Water-proofs, reconditions golf shoes, golf bags, etc. Stops dry rot. Prevents mildew. Odorless, colorless, not sticky. Sold only in Bismark Brown cans. Retail at 3 1/2 oz. 30¢, 1 lb. \$1.00, 5 lbs. \$4.00. Money-back guarantee. Descriptive folder and sample can sent FREE on request.

Dept. 13

THE SNOW PROOF CO.
Livonia, N. Y.

*Leather's
Best
Friend*

All the Year Around



Nothing like August to
show up the value of
**MURDOCK Outdoor Drinking
Fountains and Hydrants**
Members appreciate cool drinks
The Murdock Mfg. & Sup. Co.
Cincinnati 2, Ohio

MURDOCK



GOLF BALLS, CLUBS & EQUIPMENT

FOR
DRIVING RANGE
MINIATURE OR
PITCHING COURSE
RETAIL SALES.

CONSTRUCTION &
MAINTENANCE
HINTS.

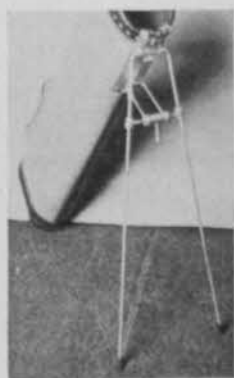
NORTHERN BALL CO.

3441 N. Claremont Ave., Chicago 18, Ill.



helpful bulletin of Aerifier research work on turf at experiment stations in Florida, Georgia, Indiana, Kentucky, Maryland, Missouri, New Jersey, Oregon, Pennsylvania and Texas, which is required reading for the superintendent who keeps up to the minute.

NEW BAG SUPPORT IS STANDFAST



Walton Associates, PO Box 561, New York 8, N.Y., have a new lightweight all-steel, cadmium plated golf bag support which is easily attached to almost all shapes of bags. The Standfast support is streamlined for easy storage and cannot become detached or fold up accidentally in use. It has a convenient tee-holder. Metal

eyelets (grommets) are supplied for neatly and firmly attaching the Standfast device to the bag in a manner to protect the bag material.

Retail price of the Standfast is \$3.25.



D32G

HOLE-IN-ONE TROPHY

Your Golf Ball
Fits Into Hole

Sunray Finish
Height 9 1/2" — \$8.25

WRITE FOR
COMPLETE TROPHY
CATALOG

TROPHY & MEDAL SHOP

DEPT. G

10 S. Wabash Ave., Chicago 3, Ill.

PRO FINISHED PERSIMMON HEADS

WOODS HAND MADE TO ORDER
WON-PUTT ALUMINUM PUTTERS

Quick Service on All Types of
Repair Work.

Bert Dargie Golf Co.

2883 Poplar Avenue, Memphis 11, Tenn.

Customary pro discounts are allowed. The device was approved by 176 pros before it was placed on the market.

AL LINK WITH BURKE



Al Link, widely known for his successful work in golf club design and construction, has joined Burke Golf, Inc., and will have his base at Burke's Chicago office, 188 W. Randolph. Link will be in sales engineering with Burke's Chicago and Illinois sales force and spend time at the Newark, O., factory in work on designs of new Burke club models.

Link has been especially close to pro model design and construction in his previous connections with Wilson Sporting Goods Co., L. A. Young Golf Co. and Hilerich and Bradsby and has been responsible for numerous big selling models.

Burke also announces that George Gelhar of its sales staff has a new assignment and will intensively cover the Wis. area.

LOWER OPERATING COSTS with RANGE BUILT PRODUCTS!

New *Paintless* Ball—White For Life
(Also in Colors)

NOW Available in Limited Quantities

NEW — Dow Metal — Long Life Range Driver

TEE MATS { 4' x 5' — Golfer Approved — No black smudge on clubs or balls. The only Trouble Free Mat in the business.

NEW — TEE QUEEN — Foolproof "Automatic" Tee

NEW — LOW PRICE Automatic Ball RETRIEVER

Get on our mailing list { We will save you money Write for circular

Witteh GOLF RANGE SUPPLY CO.
5128 W. North Ave. Chicago 39, Ill.

WILLIAM B. LANGFORD
GOLF COURSE ARCHITECT
Balanced Topographical Design

Member:
 American Society of Golf Course Architects
 Telephone: KEystone 9-6501
 2405 Grace Street, Chicago, Illinois

STOLONS! STOLONS! STOLONS!

of
 C1 ARLINGTON—C19 CONGRESSIONAL—U. 3 BERMUDA
 For Fall of 1950 Delivery
 Pure strains. Weed free.
 Write for prices.

HENRY C. GLISSMAN & SON
 4705 CASS ST. OMAHA, NEB.

JAMES GILMORE HARRISON
Golf Course Architect
 Either Contract or Fee

Member: American Society of Golf Course Architects
 R. D. #3, Box 372 Turtle Creek, Pa.
 Phone — Valley 3225 Suburb of Pittsburgh

GOLF RANGES
MINIATURE GOLF COURSES

We Have a Complete Line of Supplies
 Write for prices
EASTERN GOLF CO.
 244 W. 42nd St., Dept. A, New York 18, N. Y.

• **BENT GRASS** •

Stolons and Sod. Washington — C1 —
 and other recommended strains.

HIRAM F. GODWIN

22366 Grand River Ave., Detroit 19, Mich.

David Gill

GOLF COURSE ARCHITECT
 ENGINEER and CONSULTANT
PLANS • SUPERVISION • SPECIFICATIONS
 phone ANdover 3-5049
 35 East Wacker Drive Chicago 1, Illinois

C19 STOLONS SPECIAL!

5000 Bushels @ \$2.50 Per Bu.

Pure Congressional Strain

H. C. GLISSMANN & SON
 4705 Cass St. Omaha, Nebr.

**DAVE LILLY, NEW HEAD OF
 TORO MFG. CORP.**

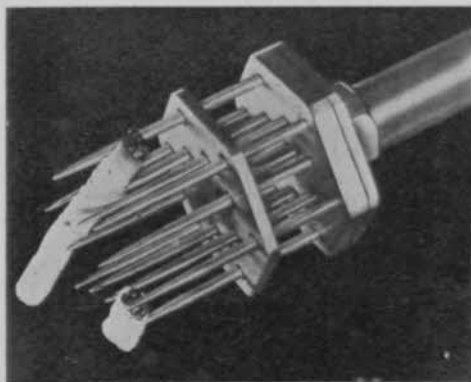
July 1 David M. Lilly became pres., Toro Mfg. Corp., Minneapolis, Minn., succeeding Kenneth E. Goit who retired after 27 years with the company. Goit started with the company in Kansas City and has worked in building Toro from its original factory force of 4 men to its present normal roster of 103, and in developing the Toro distribution from 5 outlets to 88. Goit remains associated with Toro as a member of the board of directors and in an advisory capacity.

Dave Lilly heads the energetic younger group that came into the Toro organization in December, 1945. With him in the new executive line-up of Toro are C. Whitney Miller, vp in charge of manufacturing and gen. mgr., Minneapolis plant; W. Fenton Miller, vp in charge of engineering; E. S. Conover, sec.-treas.; and C. E. Ostberg, asst. sec.-treas.

SPALDING SPORTS BOOK FREE

Spalding's Sports Show booklet for 1950-1951 containing illustrated incidents of oddities in sports is off the press. It's available free to pros for distribution to club members. Request copies you want from Adv. Dept., A. G. Spalding & Bros., 161 Sixth Ave., New York 13, N.Y. The booklet contains interesting sports material drawn by famed sports page cartoonist Willard Mullin.

BELMAR LITTER PICKER



A light weight mechanical hand picker for debris and litter around clubhouses and golf courses designed to pick up small elusive bits with a minimum of effort at maximum speed. It's made of aluminum with 12 chrome-plated steel prongs and plastic grip. Close up shows litter about to be ejected. When not in use head can be locked in safety position. Replaceable heads containing the steel prongs are available at small cost. Further information can be obtained by writing Belmar Wheel & Machine Co., 1707-F. St., Belmar, N. J.

Buyers' Service

Check off your Supply & Equipment Needs. Tear out and mail this sheet to *Golfdom*, 407 S. Dearborn St., Chicago, Ill., or use convenient card. You'll get prices and literature direct from the sources of supply.

Golf Course

Aerifiers: fairway ☐ green ☐
Architects (course — house)
Arsenate of lead
Ball washers
Bent grass stolons
Brown-patch preventives
Compost mixers
Compost spreaders
Crabgrass control
Cultivators: f'way ☐ green ☐
Drinking fountains
Electric Plant (Portable)
Fencing
Fertilizers
Flags (greens) ☐ Flag poles ☐
Flood lights

Fungicides
Fungicide applicators
Gasoline engines
Golf Course Const'n Engineers
Hedge trimmers
Hole cutters
Hose, 3/4" ☐ 1" ☐
Humus
Insecticides
Lapping-in machine
Leaf burning cart
Leaf rake & pulverizer (power)
Miniature Course Const'n ☐
Miniature course matting
Mowers: putting green ☐
 whirlwind ☐ tee ☐
 fairway ☐ rough ☐ hand ☐
Mower grinders
Peat Moss
Pipe
Playground equipment

Pumps
Putting cups
Refuse containers
Rollers: power ☐ water filled ☐
Scythes (motor driven)
Seed: fairway ☐ green ☐
Sod cutter
Soil cond. material
Soil screeners ☐ Soil shredders ☐
Sprayers: power ☐ hand ☐
Spikers: greens ☐ fairway ☐
Sprinklers: f'way ☐ green ☐
Stiles (over fence)
Sweepers (power or hand)
Tee markers
Topdressing
Tractors
Tractor wheel spuds
Turf Pluggers
Water systems, fairway
Weed chemicals

Pro Shop

Bags: canvas ☐ leather ☐
Bag carts, for players
Bag covers (overall)
Bag Support (Individual)
Ball cover stock
Balls: Regular ☐ Range ☐
Ball markers ☐
Ball retriever
Ball vending machine
Bandages, adhesive
Buffing motors
Calks, for shoes
Caps and hats
Club cleaning machine
Clubs: Woods ☐ Irons ☐
 Putters ☐
Club display racks
Club head covers

★
Club repair supplies
Club separators for bags
Cushion-sole Inserts
Detachable cleated shoe plates
Dressing for grips ☐ bags ☐
Golf gloves
Golf Grips: Leather ☐
 Composition ☐
Golf Practice Devices ☐
Golf Practice Glove
Golf practice mirror
Golf shoes
Grip preparation for hands
Handicap boards
Handicap racks ☐ cards ☐
Luggage (leather)
Mechanical Golf Ball Retriever
Miniature course surfacing

Pencils
Portable motor tool
Practice driving nets
Practice golf balls
Preservative wiping cloth
Preserver for leather
Pro accounting book
Range ball washer
Rubber-spiked overshoes
Score cards
Shoe spike wrench
Sportswear: Shirts ☐ Socks ☐
 Sport jackets ☐ Rain jackets ☐
 Windbreakers ☐ Slacks ☐
Tees (wood) ☐ plastic ☐
Tee mats ☐
Tees (rubber) for driving mats
Teeing device (automatic)
Tennis nets
Trophies

Club House

Air conditioning equip.
Athletes foot preventives
Bath mats
Bath slippers
Bars
Charcoal cookers (outdoor)
Deodorants
Disinfectants
Fire protection equipment

★
Floor coverings
Folding Table (Banquet)
Furniture
Kitchen equipment:
Dish washers
Frozen food storage
Ice cube machines
Ovens ☐ Food warmers ☐
Ranges ☐ Refrigerators ☐

Slicing machines
Link Type Mats ☐
Lockers
Movies of golf subjects
Outdoor grills (portable)
Runners for aisles ☐
Rugs ☐
Showers ☐ Shower mixers ☐
Step treads
Towels: bath ☐ face ☐
Uniforms

Send information

to: Name _____

Club

Title _____

Club _____

Address _____

Town _____

Zone (_____) State _____

August, 1960

69

LET GOLFDOM HELP YOUR OFFICIALS MAKE THE MOST OF 1950

Each month GOLFDOM presents the latest, most practical ideas on golf club administration, management, upkeep and service ... for time, labor and money-saving guidance of your officials and department heads. Help the *right men* at your club do the *job right*. Send in the form below so we can get them "on the beam".

— FILL IN THE FORM BELOW — THEN MAIL THIS PAGE TO —
GOLFDOM, 407 SOUTH DEARBORN STREET, CHICAGO 5, ILLINOIS

Name of club: _____ ☐ Private ☐ Daily Fee ☐ Muny NUMBER OF HOLES _____
Address _____ Town: _____
Zone () State _____ By _____ Club Position _____

President's:
name _____ (Zone _____)

Add: _____ Town: _____ State: _____

Secretary's
name _____ (Zone _____)

Add: _____ Town: _____ State: _____

Manager's:
name _____ (Zone _____)

Add: _____ Town: _____ State: _____

Green Chrmn's:
name _____ (Zone _____)

Add: _____ Town: _____ State: _____

Greenkeeper's:
name _____ (Zone _____)

Add: _____ Town: _____ State: _____

Professional's:
name _____ (Zone _____)

Add: _____ Town: _____ State: _____