

# A STRONG APPROACH



## TO MAINTENANCE COSTS!

Your approach to rising costs and rising weeds will be right on the pin if you use effective, economical Dow Weed Killers. Greenskeepers have found that chemical weed and brush killers are quicker, more thorough, and *cost less* than mechanical means.

Dow offers a complete line of weed and

brush killers . . . 8 different formulations, each designed for specific maintenance needs. Don't let unsightly weeds or brush mar and narrow your fairways . . . use *proved* Dow Weed Killers. Look for the Dow "Diamond", a symbol of reliable chemical products for over 50 years.

### A partial list of Dow weed and grass killers:

**ESTERON 44:** A powerful weed killer especially effective against annual and perennial weeds, including white clover.

**2-4 DOW WEED KILLER, FORMULA 40:** A 2,4-D amine weed killer, Formula 40 is deadly against broad-leaf weeds. An effective, all-purpose weed killer for turf use.

**DOW GENERAL WEED KILLER:** Designed specifically to control weeds, grass and ugly vegetation in spots where mowing is impossible—a "chemical mower."

**ESTERON BRUSH KILLER:** This hard-working brush killer controls stubborn brush, brambles, poison oak, poison ivy and woody growths which narrow your fairways.

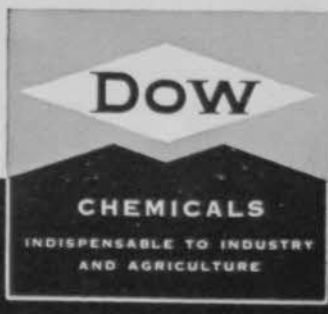
**DOW SODIUM TCA 90%:** Spray unwanted grasses with this new Dow grass control agent. Effective control of Johnson, quack, Bermuda, and other grasses.

Cut maintenance costs with

## Dow Weed Killers

Agricultural Chemical Division

THE DOW CHEMICAL COMPANY • MIDLAND, MICHIGAN



USE DEPENDABLE DOW AGRICULTURAL CHEMICAL PRODUCTS

WEED AND GRASS KILLERS • INSECTICIDES • FUNGICIDES  
SEED PROTECTANT • PLANT GROWTH REGULATORS  
GRAIN AND SOIL FUMIGANTS • WOOD PRESERVATIVE

INDISPENSABLE TO INDUSTRY  
AND AGRICULTURE

**"QUALITY" POLES**

**Buy STANDARD Golf Course EQUIPMENT**

**"GOLFBALL" WASHERS**

**"ONE-PIECE" PUTTING CUPS**

**"TRUE-VUE" FAST COLOR FLAGS**

**4**

**"CUTS-TRUE" HOLE CUTTERS**

Write for Bulletin "50" showing the complete and fully guaranteed Standard Line.

**STANDARD MFG. CO.**  
Box G., Cedar Falls, Ia.

Illinois PGA to have spring meeting and business clinic at Hotel Morrison, Chicago, April 10. . . Pros and assistants of Illinois and surrounding states invited. . . Among speakers will be J. Havey, Henry Cowen, Bob MacDonald, J. P. Jones, John Revolita, Ed Vines, Fred Barkes and Herb Graffis. . . Chairman Wally Mund of Minnesota PGA Educational Clinic announces the section's annual clinic for April 17 at the University of Minnesota. . . Also on April 17 is annual spring meeting and business clinic of Indiana PGA at Hotel Lincoln, Indianapolis.

Rancho Carrillo at San Diego, Calif., proposed as site of new muny course replacing present 9-hole course to be subdivided. . . Mgr.-pro Earl Fry says construction on Alameda, Calif., additional 9 holes at muny course will start after July. . . Construction of 9-hole public course at Brand Park, Glendale, Calif., being considered.

Portland, Ore., three public courses' revenue was \$85,043 in 1949. . . Increase of \$4890 over previous year. . . Fees were raised. . . Play was 173,579 in 1949. . . Weather accounted for drop under previous year. . . Hollister, Calif., plans to open its Bolado Park course with tournament sponsored by Gen. Hilario Moncado, Filipino guerilla leader. . . If arrangements are

## **TURF** *that Speaks for Itself!*

**BOCA RATON HAS USED MILORGANITE EVERY SEASON FOR OVER 20 YEARS**

At Boca Raton, when the two golf courses were being developed, and every year since, Milorganite fertilizer has been relied upon to produce outstanding turf—in keeping with the exceptional appointments at this fine club.

Boca Raton pioneered in fine turf in south Florida under O. S. Baker. From 300 to 500 tons Milorganite per year were used on the two courses and club house grounds at the start. There was no finer turf anywhere. Then rates were reduced somewhat. When R. F. Lawrence took charge, he continued the fine start made by Baker, and now Harold Turner, in charge of grounds and the physical plant, continues to rely upon Milorganite.



**For further information about this remarkable turf fertilizer write to**

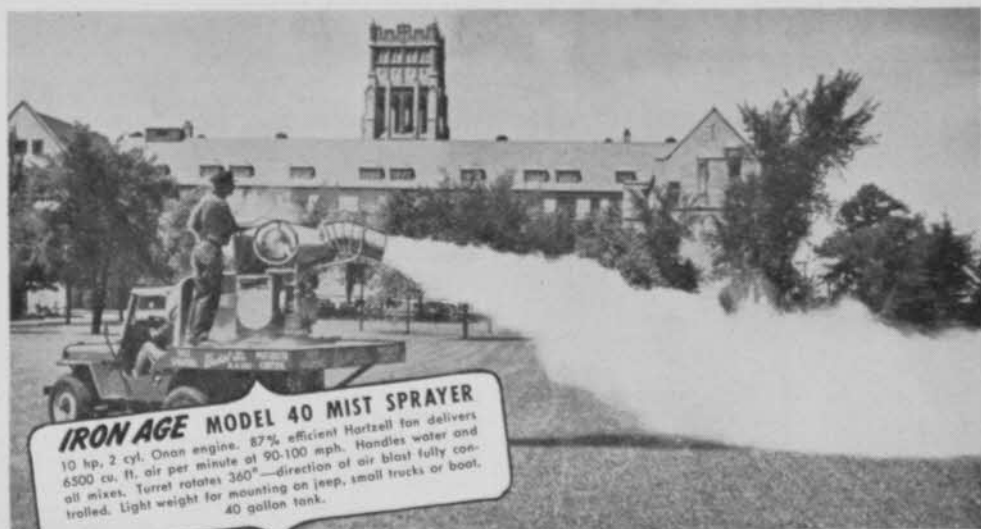
**Turf Service Bureau**

**THE SEWERAGE COMMISSION, Milwaukee 1, Wis.**

**GOLF CLUBS  
USE MORE**

**MILORGANITE**

**THAN ANY  
OTHER FERTILIZER**



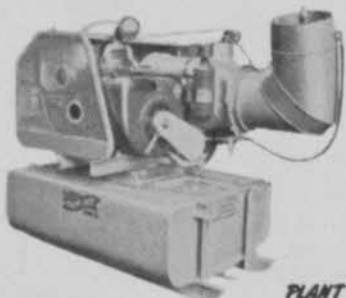
### IRON AGE MODEL 40 MIST SPRAYER

10 hp, 2 cyl. Onan engine. 87% efficient Hartzell fan delivers 6500 cu. ft. air per minute at 90-100 mph. Handles water and all mixes. Turret rotates 360°—direction of air blast fully controlled. Light weight for mounting on jeep, small trucks or boat. 40 gallon tank.

## Step up your Pest Control Program with **IRON AGE MIST SPRAYER!**

**KILLS** Flies, Mosquitoes, Locusts, Gnats,  
all insect pests... **FASTER — CHEAPER**

See that terrific blast of misted concentrate? There's 6500 cubic feet of it being delivered every minute . . . at 90 to 100 mph . . . saturating every tree, bush and blade of grass to spell *instant death* to harmful insects! Complete misting of concentrate, either in oil or water, is attained by injecting exactly the right amount of mix through highly efficient spray jets directly into the center of high velocity air stream! Spray jets can be changed in 30 seconds to alter droplet size. Easily reaches tops of 90-foot trees without defoliating. Insecticide residue affords protection from several days to several weeks. Light weight permits easy mounting on jeep, small truck or boat. Write now for complete information on Farquhar Mist Sprayers to A. B. FARQUHAR CO., 3527-A Duke St., York, Pennsylvania.



### IRON AGE MODEL 125 SUPER MIST

Larger, more powerful model. 22 hp. 4 cyl. Wisconsin Engine. 90-125 mph air blast. 87% efficient axis flow fan delivers 6,000 to 11,000 cu. ft. air per minute. Spring seat for operator. 125 gallon tank. Either wheel mounted or adaptable to small trucks.

**PLANT AND SPRAY THE IRON AGE WAY**



**For Any Pest Control Program—Anywhere!**  
Wherever you need *really efficient* pest control—parks, swimming pools, golf courses, playgrounds, orchards, resorts, tourist courts, picnic grounds, country clubs—Farquhar Iron Age Mist Sprayers can do your job faster, easier, better and cheaper!

**Farquhar**  
**IRON AGE**

YORK, PA.

POTATO AND VEGETABLE PLANTERS • TRANSPLANTERS  
SPRAYERS • BUSTERS • POTATO DIGGERS • WEEDERS  
MANURE SPREADERS • CONVEYORS • JUICE PRESSES

# "FINEST TURF in Club's History... THANKS TO AGRICO!"



GROVER HALL, Greenkeeper,  
Williamsport Country Club, Williamsport, Pa.

"THE turf on our fairways was destroyed by Japanese beetles and we were faced with the problem of reseeding all 18 fairways," writes Grover Hall, greenkeeper at Williamsport Country Club, Williamsport, Pa. "We reseeded the entire course using 20 tons of AGRICO COUNTRY CLUB Fertilizer along with the grass seed. Results were very gratifying. Since that time we have used Agrico annually on the greens and fairways. Our turf is now in the finest condition since the Country Club was established. Several golfers who have played all the eastern part of the country have stated we have the best course they have played."

Order AGRICO now—it's America's premier Golf Course Fertilizer. Ask your regular supplier, phone nearest A.A.C. Sales Office, or write to The AMERICAN AGRICULTURAL CHEMICAL Co., 50 Church Street, New York 7, N. Y.



**AGRICO**  
Country Club  
FERTILIZER

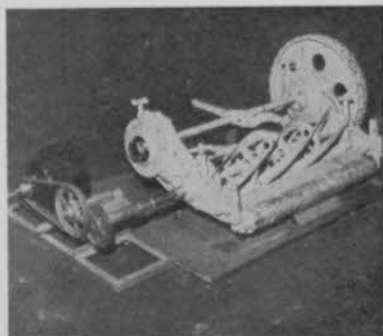
made the General will be assisted by his genial aide-de-camp, Pvt. Eddie Darrell, leader of the locker-room guerillas.

Jimmy Commisso, Godfrey McGarvey, Howie DeAngelus, Joe Garin, Frank Commisso, Armand Lannutti, Bob Stenzel, Mike DeGregory and George Vandenbrul, Rochester dist. pros, stage third annual golf clinic at Edward's Dept. Store. . . Some talk in California about amateur going into pro status when the amateur accepts a money split from his buyer in a Calcutta pool. . . There's been a bit of wondering about what might happen if the income tax guys look into the big Calcutta pools. . . Aw tell 'em you got it from a long shot at Tropical and put it all back on a glue factory DP that ran a bad last.

Miss R. J. Lohr, mgr., Kenwood G&CC (Washington, D.C. dist.) put on a highly successful "Twelfth Night" party as a finale to the holiday season. . . It was founded on the old English custom of burning the Christmas tree the twelfth night after Christmas. . . Burned all the clubhouse Christmas greenery in the fireplace, ate, danced, drank and members wished they could toss their Christmas bills into the blaze. . . Pat Casey Enterprises, 5504 Hollywood, L.A., promoting "streamlined golf" game for golf practice fairway installations.

Bill Schuchart, Happy Hollow CC, Oma-

## ATLAS LAWN MOWER LAPPING MACHINE



A compact, light-weight machine for lapping all models of Hand, Power and Gang Mowers! May be easily used on work bench or floor, eliminating the lifting of heavy mowers. The simple height adjustment for the reel shaft may be used from 4 1/2" to 10 3/4". Equipped with several attachments to fit different reel shafts. Metal blocks for rollers. Steel stands to support the mower.

**FULLY GUARANTEED**

List Price, With Motor . . . . \$58.50

List Price, Without Motor . . . 39.00

Write for Bulletin.

**Atlas Lawn Equipment Co.**

9761 Olive Street Road

St. Louis 24, Missouri



## TORO "Professional" solves tough mowing problems in a hurry!

Get in among trees . . . cut hard-to-get-at fairways . . . mow approaches, tees, lawns, bunkers, terraces. This versatile 3-gang Toro *Professional* cuts a carpet-smooth swath 76 inches wide with turn-on-a-dime maneuverability, forward-reverse transmission. Its free-swinging wing mowers hug the ground . . . trim close to trees, walls . . . reach under shrubbery.

With this rugged *Professional* you can mow up to 15 to 20 acres a day. See your Toro distributor for a demonstration.

**ALL STEEL CONSTRUCTION** . . . a triumph of precision engineering in its powerful, compact design and rugged durability. We've smashed it into trees and posts at full speeds . . . driven it down flights of concrete steps . . . and every test proves the *Professional* can take practically any punishment and still deliver top-flight, trouble-free performance!



**A AVAILABLE IN 30-INCH MODEL** . . . convertible whenever you wish by adding wing units. Increases the swath 46 inches. Just like buying extra power mowers . . . but at a fraction of the cost!



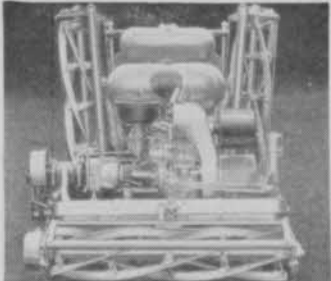
**DOWN YOU GO** and those wing mowers tilt up to follow terrain, cutting evenly all the way. They're power-driven, too . . . and like center reel, can be raised for quick clearance, fast transport.



**OVER YOU GO** and the wing mowers swing down, keep cutting! With its low center of gravity and 4½ h.p. engine, the *Professional* climbs steep grades with ease. Plenty of traction!



**CLOSE-QUARTER CUTTING** is easy for the *Professional*! It "rings" trees and shrubs quickly. Extremely short turning radius, plus forward-reverse control make this maneuverability possible.



**COMPACT DESIGN** . . . wings fold for easy clearance and storage. 5-blade reels with grass shields and bumpers. Heavy-duty traction and reel clutches. Chain drive. Comfortable riding sulky.



**THERE'S A TORO** distributor near you equipped to give you service and speedy parts delivery. See him, or write: Toro Manufacturing Corporation, 3048 Snelling Ave., Minneapolis 6, Minn.



## LIQUID LUSTRE GOLF BALL WASH

Lively suds clean quickly and easily. Contains no harmful chemicals. Will never develop any offensive odor. No muss, no waste. Convenient and economical. Glistening clean balls are easy to follow in play.

\$3.50 per single gal. 5 gal. for \$16.25

Order from your dealer or direct from us and give dealer's name.

**D.B.A. PRODUCTS CO.**

Dept. GD3

Deerfield, Ill.

ha, Neb., says pros could boost sales of complete outfits by displaying clubs in bags. . . Bill tells that the idea works in his club. . . To pro objection that the bags might get dirty Bill has an easy answer: "Keep them clean." . . . "Pat" Patterson, long active in Southern California pro golf and former national vp of PGA retiring from Wilson Sporting Goods. . . Pat is 73. . . Looks, acts and thinks much younger. . . Paul Burdette getting fine collection of color photographic studies of Midwest greenkeepers.

Southern Golf Assn. launches campaign for \$10,000 for turf research at Tifton, Ga. station. . . Southern starts off the Southern Turf Foundation drive with \$1000 contribution. . . Southern voted to eliminate gallery fee at its 1950 Amateur, New Orleans (La.) CC, June 19-24. . . Amateur is regarded as a golf interest stimulator rather than financial venture. . . Atlanta pros present plaques to amateurs who "did most for golf promotion in Atlanta in 1949."

Joe Walsh making RKO-Pathe movie of the Bauer kids. . . USGA OKs Bauer sisters' appearance in it as amateurs as they get no pay for picture starring. . . Wm. C. Gordon starting his 25th year as pro at Plum Brook CC, Huron, O. . . Bill still has his rich Scotch burr. . . Plum Brook course has four new greens and a swimming pool

## GET THOSE WEED ROOTS!

GO TO THE ROOT OF YOUR WEED  
PROBLEM WITH THESE DOLGE PRODUCTS



### DOLGE SS WEED-KILLER

Where no vegetation whatever is desired. Penetrates deep down to plant roots and kills. Sterilizes the soil, preventing normal sprouting of wind-blown seeds. Weeding the thorough, modern chemical way eliminates backbreaking toil and saves the cost of many labor-hours.

### E. W. T. SELECTIVE WEED-KILLER (2-4-D)

Highly recommended for maintaining beauty of lawn and fairway. Works its way down into the roots of brush, dandelion, plantain, poison ivy, ragweed, sumac and other obnoxious plants, but does not injure most turf grasses.

Please write for descriptive literature explaining how these tested DOLGE products can best be used for your weeding requirements.

**The C. B. DOLGE Co.**  
WESTPORT, CONNECTICUT



# *Announcing...* **the LEWIS Golf Club CLEANING MACHINE**

Push a button and revolving brushes clean golf clubs\* in seconds instead of the usual long time required by the hand rubbing and scrubbing method.

Pro shops will welcome this new machine for its time and energy saving feature. All the better clubs will want to offer it as an entirely new service to members.

Sturdily built, the LEWIS Golf Club Cleaning Machine will give dependable service for many years.

Originally designed and used by outstanding Canadian pros, it is available now for the first time in America.

**KEEPS  
CLUBS  
CLEAN**

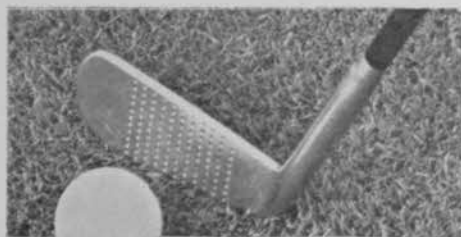
Ask for a demonstration at your Golf Course Equipment Dealer, or write for complete information.

**G. B. LEWIS  
COMPANY**

DEPARTMENT G  
WATERTOWN • WISCONSIN

\*WOODS AND IRONS ALIKE





## For Turf Perfection USE *Scott's*<sup>\*</sup> TURF PRODUCTS

Over a quarter of the nation's leading country clubs depend upon Scotts to help provide thick, fast greens and uniform fairways. This Spring use Scotts proven turf products for championship turf. Write for prices and also ask about Scotts time saving "WEED and FEED" treatment.

**O. M. Scott & SONS CO.**

15 Park St., Marysville, Ohio  
also Palo Alto, California

<sup>\*</sup>T.M. Reg.

this year as part of program pushed by Pres. Lionel Searle. . . Mike Fritz, Mills Creek, Sandusky, O., pro, returning from Dunedin, Fla., PGA course where he changed to winter oil.

Notice women's golf is presenting some very good looking dolls. . . We always thought there was nothing in the rule book to prevent the gals using cold cream and avoiding that pony express saddle complexion. . . Orville (Abe) Forbrich, pro at Norwalk, O., CC and loving spouse Virginia, have bought new home at Port Clinton, O. . . Firelands CC, Port Clinton, O., rebuilds all 9 greens and gets new lessors for 5 years. . . Always like to hear a pro bragging about what greenkeeper teammate has done with the course. . . Frank Factor, pro at Norwalk (O.) Elks Club practically sings opera bragging about what Gkpr. Ed Lenhart has done with the club's greens.

Leo Biagetti, promising youth on Paul Bertholy's Sandusky (O.) Range staff, signed on Golfcraft advisory staff. . . Carl Aves, owner of Vermillion (O.) CC says last year's business of resort golfers convinced him resort golf is in for big boom unless all business goes to hell. . . PGA of America now counting Canadian Open scores on Ryder Cup and Vardon trophy standings. . . Art Wall, playing the winter circuit before starting on his first asst. pro

## BETTER TURF - THE NATURAL, ECONOMICAL WAY

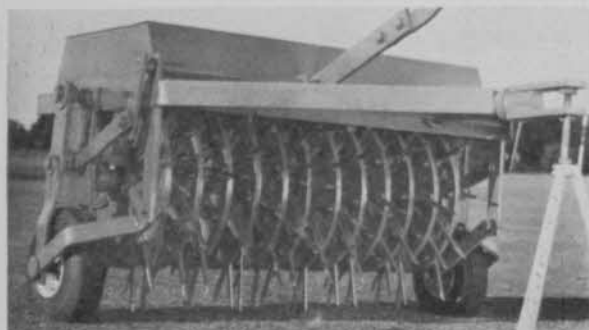
with the  
*Improved*

## PERRY'S Greens Spiker

(PATENT PENDING)

An indispensable implement especially designed for properly, quickly loosening and aerifying soil to encourage abundant, healthy turf development and watering efficiency. In every four sq. ft. 100 hollow, high carbon spoons of lasting durability remove  $\frac{3}{4}$  in. plugs of compacted soil to an adjustable depth up to 4 inches — without injury to the turf.

Encourages deeper, healthier, more extensive root growth; permits more efficient, economical water and fertilizer use; keeps greens softer without waste and injury of over-watering. An essential of modern turf maintenance.



The spiking assembly is quickly detached from the frame by removing four bolts. Spoons easy to replace. The tractor drawn Perry's Greens Spiker is transported on its heavy duty rubber tires with lift bar handy for operation from driver's seat.

Write for illustrated descriptive folder.

**PERRY'S GREENS SPIKER**

1340 Prescott Road, Memphis, Tenn.





# Players' Choice -

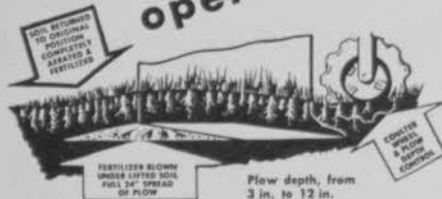
## TURF IMPROVED WITH Vertagreen

Players prefer smooth, springy turf — the type produced with Vertagreen, Armour's complete, better balanced plant food. Vertagreen has made a remarkable improvement on dozens of the nation's best courses, and it will do the same on yours. Now, give your grass the benefit of Vertagreen's three-way feeding. For turf that can take it, get Vertagreen!



**ARMOUR FERTILIZER WORKS**  
General Office—Atlanta, Ga.

## Fertilize and Aerate in ONE operation!



This unique sub-soil plow when attached to a power unit incorporating three point suspension, makes a heretofore impossible job EASY. Many acres can be plowed in a short time without noticeably disturbing the outward appearance. Send now for literature and complete information on this NEW amazing soil improving machine.



1711 NORTH 42nd STREET  
OMAHA 2, NEBRASKA

job, got 29th ace of his career on 166 yd. 16th at San Antonio.

Field days and conference at University of California golf turf plots, Los Angeles, will be May 8 and 9. . . Fred Grau, O. J. Noer, Charles Hallowell and other nationally noted experts will join V. T. Stoutemyer in putting on the program. . . This Southern California work under the able direction of Stoutemyer is outstanding demonstration of valuable results with greenkeeper and chairman cooperation. . . Northern Calif. Turf Conference May 16 and 17 at U. of Calif., Berkeley. . . John J. McElroy, Agricultural Extension Service, U. of Calif., Berkeley 4, Calif., handling registrations.

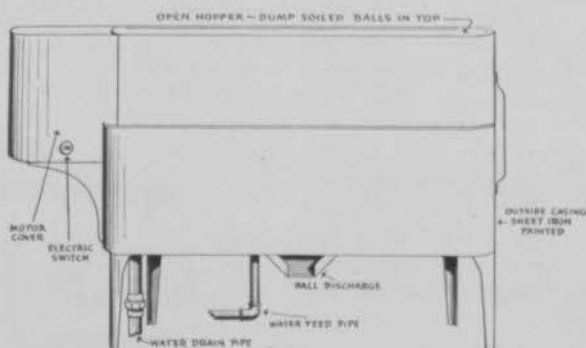
John Henry Oke, 69, native of Northam, Devon, Eng., died at Jacksonville, Fla., March 8, of cancer of the throat. . . He won the 1904 Canadian Open and was pro at Ottawa, Can.; Highland CC, Pittsburgh, Maysville (Ky.) CC and other clubs. . . He retired in 1948 after serving as pro at Elizabethtown (Ky.) CC. . . He won numerous events in England, Canada and the U.S., the last of which of consequence was the 1925 Shriners' tournament at Miami. . . He served in the Canadian Army during World War II. . . He is survived by his widow who resides at 4514 San Jose Blvd., Jacksonville 7, Fla. . . . Jack was

## HOLCOMB BALL WASHING UNIT

Compact Unit Adaptable To Any Method Of  
Handling Dirty Balls From Picker To Basket.

Balls constantly revolve under rotary brush. Balls rotate 10 feet under brush and 16 feet under water pressure sprays. Dirty water drains from each spiral ball runway. Balls rotate constantly in clean water during 16 feet of travel. Special alloy aluminum castings used for strength, lightness and rust proof.

Motor 1/4 H.P. with speed reducing gears running in oil. Final drive V belt. Brush speed 30 R.P.M. Pressure adjustable. Capacity 10,000 balls per hour. Diameter 26"—Extreme width 36"—Height 24". Weight 285 lbs.



Write for descriptive literature

Manufactured by

**HOLCOMB MACHINE CO.**

6627 N. ARTESIAN AVE., CHICAGO 45, ILL.

**\$325**

F.O.B. Chicago