



## **LOW SCORE for Keeping Grounds Cost Down**

● Here's a tractor which consistently breaks par in the matter of total costs. With the Case "VAI," your savings begin with reasonable price and continue through the long life of the machine. This compact, light treading tractor is equipped with a heavy-duty 100 percent tractor engine.

Adjustable rear wheel tread provides stability for steep side slopes. Rear tires carry only 12 pounds of air for least pressure on soft ground. Hydraulically operated sickle bar saves time around traps, bunkers, and rough. Good visibility speeds work and avoids damage to mower or fixed objects. Drawbar is left free for pulling reel-type fairway mowers or other equipment. See your Case industrial dealer now, and find out how little it costs to get real time-saving power for your golf course.

**CASE**  **LONG LIFE TRACTORS**

## Scalding May Be Good for Lobsters

but not for the members of your club



Shower baths that run ice-cold one minute and scalding hot the next are dangerous and waste hot and cold water.

**PLAY SAFE!** Before trouble occurs — install the safest shower regulators made — **POWERS** Thermostatic Shower Mixers — always keep shower bathers happy and safe — save hot and cold water. **WRITE FOR CIRCULAR H48.** The Powers Regulator Co., 2799 Greenview Ave., Chicago 14, Ill. (HL)



the war at smaller clubs. . . . Greenkeeping standard at some smaller clubs now getting close to metropolitan grade. . . . How some of the smaller town greenkeepers do it on their budgets I can't figure out, except that the fancy trimmings are dispensed with and trapping isn't so tricky and costly. . . . Impressive jobs are being done by pros who are general managers of smaller clubs. . . . One of the neatest, attractive jobs I ever saw of getting "Southern hospitality" atmosphere at small club is that of John Cochran at Greenwood (Miss.) CC. . . . Fellows tell me that Bill Evans at Eufaula (Ala.) CC also is doing a great job at small Southern club with 1948 being best year the club's had. . . . Eufaula's clubhouse being remodeled and new pro shop being built.

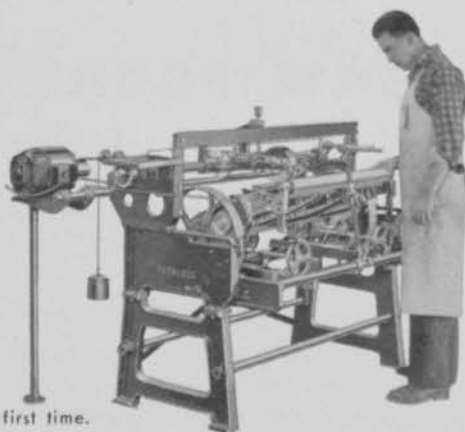
More I see of these successful smaller town operations the more I'm convinced the answer lies in smart officials who hire good golf businessmen, let them run the club and make enough money to have incomes comparable with first class local standards. . . . That puts it up to the fellow who runs the course, pro dept. and clubhouse to make the plant lively and attractive. . . . If he does, he and his family live well and in

Here's A  
**MOWER SHARPENER**  
—That Gives A Keen  
Cutting Edge  
Every Time

The Peerless Sharpener has a fast-cutting grinding wheel . . . puts a keen cutting edge on any mower blade—and does it right the first time.

Peerless-sharpened mowers keep greens, fairways and lawns looking sharp, well-groomed. A "once-over" is all that's needed. Grass is cut in half the time with less power when mower blades are ground evenly and smoothly—the Peerless way.

Peerless Sharpeners are rugged and precision-made. They're built for long, trouble-free service and backed by a company well known for its long skill in designing grinding tools of many kinds. Write today for complete information.



**The PEERLESS  
Sharpener**  
THE POPULAR CHOICE  
SINCE 1916

The **FATE-ROOT-HEATH COMPANY** DEPT. D-1  
Plymouth, Ohio

---

---

# FEED VIGORO\*!



- have better greens and fairways!
- establish a more favorable reputation for your club!

It's much less complicated to keep your course in good condition when you feed with Vigoro. And it's good business, too. That's because golfers enjoy playing and walking on firm turf . . . putting on even, velvety greens. So feed Vigoro, complete, balanced plant food. It provides *all* the vi-

tal food elements grass must get from the soil. The results — an improved golf course . . . more golfers . . . more business. Order your supply of Vigoro today.

\*VIGORO is the trade-mark for Swift & Company's complete, balanced plant food.

A PRODUCT OF SWIFT & COMPANY

Plant Food Division U. S. Yards Chicago 9, Illinois



**"QUALITY" POLES**



**"GOLFBALL" WASHERS**



**"ONE-PIECE" PUTTING CUPS**



**"TRUE-VUE" FAST COLOR FLAGS**



**"CUTS-TRUE" HOLE CUTTERS**

Write for Bulletin "49" showing the complete and fully guaranteed Standard Line.

**STANDARD MFG. CO.**  
Box G., Cedar Falls, Ia.

security. . . . If he doesn't, the club practically folds up.

Ken Bousfield, British Asst. Pro champion and near top of several major British 1948 tournaments, to play on winter circuit. . . . Bousfield looks certain for British Ryder cup team. . . . Arthur Lacy, former Ryder Cup player, on visit to his brother Charley may be with Bousfield. . . . Over 300 inquiries from continental and other overseas golf courses and the sports field, among 1600 golf clubs, 1600 other sports clubs and 500 private individuals asking British Board of Greenkeeping Research for turf advice first 10 months of 1948.

Samuel M. Clapper, whose birth was recorded in **GOLFDOM** 19 years ago, now with his father's outfit, the Clapper Co., West Newton, Mass., as junior salesman. . . . What a superb job Maurice Luxford did in conducting the Scotty Chisholm fund campaign! . . . Fund was closed at \$6500. . . . LA Junior Chamber of Commerce led contributors with \$1000. . . . \$10 a plate testimonial dinner with movie and radio celebrities was big success. . . . Famed eye specialist did the operation with \$0 as his bill. . . . Cataract on one eye apparently successfully removed.

IN OKLAHOMA IT'S . . . .

# BOB DUNNING-JONES, Inc.

*Personalized Service*

(formerly the Bob Dunning Co.)

Announcing the expansion of our company and the construction of a new building to better serve the golf courses of Oklahoma.

*Distributors of*

- |                                |                       |
|--------------------------------|-----------------------|
| ☆ TORO GRASS CUTTING MACHINERY | ☆ DU PONT FUNGICIDES  |
| ☆ BUCKNER IRRIGATION EQUIPMENT | ☆ ARMOUR'S FERTILIZER |
| ☆ IRON AGE POWER SPRAYERS      | ☆ COMPOST GRINDERS    |
| ☆ CHAMPION DOO-ALL TRAILERS    | ☆ DOW CHEMICALS       |

The most complete line of Golf Course Supplies in Oklahoma

1402-12 S. Lewis P. O. Box 4082 Phone 5-7444 Tulsa, Okla.



**CALO-CLOR**,\* applied wet or dry, controls large and small brown patch . . . snow mold . . . earthworms in hard-to-replace turf. Calo-Clor is fast . . . sure . . . economical. Only one to three ounces per thousand square feet is required to keep greens and fairways in perfect playing condition. Specify Calo-Clor Regular for dry application, or Calo-Clor Suspension for use in sprayers.

See your dealer or write us today for full information about Calo-Clor and other Mallinckrodt greenkeeper's aids.

\*Trade Mark



## MALLINCKRODT CHEMICAL WORKS

Mallinckrodt St., St. Louis 7, Mo. / 72 Gold St., New York 8, N. Y.

CHICAGO / CINCINNATI / CLEVELAND / LOS ANGELES / MONTREAL / PHILADELPHIA / SAN FRANCISCO  
Manufacturers of Medicinal, Photographic, Analytical, and Industrial Fine Chemicals

## START Irrigation Plans HERE...



Choose your sprinkler heads first and save — their specifications directly affect pipe and plumbing equipment needed.

• Courses all over the country have chosen RAIN BIRD Sprinkler Heads —available in a wide range of models that lets you choose exactly the irrigation needed. By choosing the right RAIN BIRD heads *first*, you may save a great deal of money on piping. Write for catalog.

**L. R. Nelson Mfg. Co., Inc.**

PEORIA, ILLINOIS

Manufacturers of Lawn and Golf Course Sprinkling Equipment • Overhead Irrigation • Since 1911

Harold Henry leaves Blue Hills CC (KC dist.) as supt., to join D. B. Bell, course equipment and supplies. . . . LA Open at Riviera, Jan 7-10, raised prize money from \$10,000 to \$15,000. . . . Westward Ho CC, one of older clubs in Chicago dist., sells course for subdividing. . . . Junior golf encouragement to get even more attention this year after great success in 1948. . . . George Lake's effective efforts in getting PGA into junior golf promotion picture on national basis was an outstanding pro achievement of the year. . . . Pros who pioneered in junior promotion now see their work paying themselves and the game big dividends.

Golf still has some distance to go before it hits junior baseball promotion high of 1948 with 14,531 registered teams competing in American Legion's 21st year of kid help. . . . 232,496 boys registered on the teams. . . . Promotion was helped by 5500 Ford and Lincoln-Mercury dealers.

Notice how southern clubs receiving winter tournament events avoided law suits on racial issue by going on "open invitational" basis. . . . It looked like that situation was gradually solving itself with private clubs allowing use of course and clubhouse to Negro con-

# Keep Greens GREEN with the OHIO SPIKE DISC CULTIVATOR



**SPIKE DISC**

**H**AVE thick, rich, healthy grass all summer. Aerate the soil — and cultivate it at the same time — with an Ohio Spike Disc Cultivator. Use it before you re-seed or apply fertilizer, lime or top dressing. The spikes make little pockets for seed or fertilizer to settle into and not get blown or washed away. Use this cultivator to loosen sod hardened by summer heat, and to form moisture-retaining mulch. Easy to operate, sure in results. When not in use, discs are easily raised out of the way, as in wheeling over walks and floors.

Your club needs an Ohio Spike Disc Cultivator. Two popular-priced hand-operated sizes, Nos. 30 and 32, now available. Due to shortage of materials, tractor types are not at present obtainable. If your supply house hasn't Ohio Spike Disc Cultivators, write us for full information.

**JOHN H. GRAHAM & CO. Inc.**

General Sales Agent

Dept. Y, 105 Duane St., New York 7, N. Y.

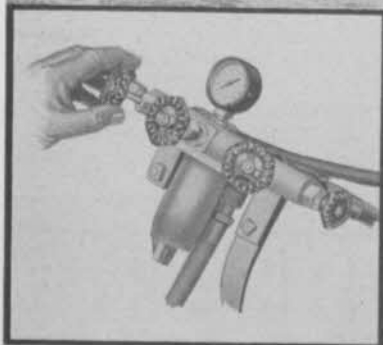
Shown here, No. 30. No. 32 has two handles. Manufactured by the makers of Dunham Water Weight Lawn Rollers

# "SPEEDY SPRAYER KEEPS FAIRWAYS WEED-FREE"

Says **CLIFF ANDERSON**, Greenskeeper

**ELMWOOD GOLF COURSE**

SIOUX FALLS, SOUTH DAKOTA



## FINGER TIP CONTROL

"Time saved is money saved," explains Mr. Anderson. "When spraying fairways you have to work quickly. With the SPEEDY FINGER TIP CONTROL, I can complete my spraying job without leaving the seat of my tractor. Nozzle valves shut off automatically at 10 lbs. pressure or less... no dripping or waste.

"Built-in manifold filter screen eliminates clogging and uneven spray. For all-around service, you can't beat The SPEEDY SPRAYER."

Speedy Sprayer comes in one complete package... ready to attach. SHPG. WT. 110 lbs.



"30 YEARS OF MANUFACTURING KNOW HOW"

## AMAZING TROUBLE-FREE ACTION GUARANTEED!

24 FT. BOOM **\$230.00** F. O. B. SIOUX FALLS

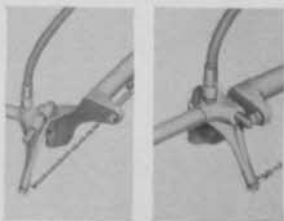
"On a large golf course like Elmwood, we need an efficient trouble-free sprayer," says Mr. Anderson. "A sprayer that will cover a lot of ground in the least amount of time.

"My SPEEDY SPRAYER fills the bill," continues Mr. Anderson. "It's easily installed, and the light aluminum construction spares tender fairways unnecessary weight. The double-action hinge prevents broken or bent booms. And for my money, SPEEDY SPRAYER is the buy."

### ATTACHMENTS FOR ANY TRACTOR

The SPEEDY SPRAYER can be attached to any tractor. Easily installed in a few minutes time, the SPEEDY SPRAYER is installed by inserting and tightening four bolts.

Send Coupon Today for Descriptive Literature.



**OPEN.** Shows hinge position when striking stationary object.

**CLOSED.** Hinge in normal position... no wobble or end play.

SPEEDY SALES COMPANY, Dept. G29  
Corn Exchange Bldg., Minneapolis 15, Minn.

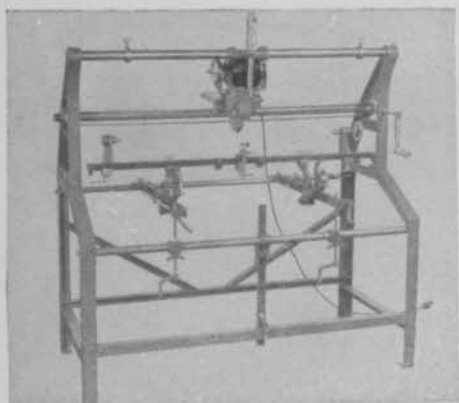
Please send me free descriptive literature.

Name.....

R. R. No.....

City..... State.....





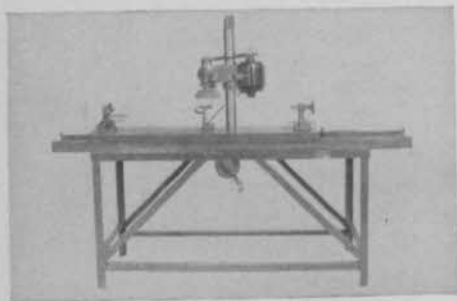
**"We have run our Grinder 9 years without a repair part" says a famous Club.**

## CARPENTER LAWN MOWER GRINDER grinds both reels and bed knives

In its 16th season serving the nation's leading golf clubs, the Carpenter Grinder is a marvel of precision, simplicity and speedy work. Study these features. NO OTHER GRINDER OFFERS SUCH A DESIRABLE COMBINATION OF ADVANTAGES.

1. Machine is complete without accessories, no hoist or auxiliary holding device needed.
2. The one cradle holds either reel or bed knife.
3. Accommodates all sizes of mowers including the largest tractor drawn units.
4. Grinds to any desired bevel, following manufacturer's grind.
5. Entire setting and operation is without tools.
6. No mechanical training or grinding experience needed to operate with 100% results.
7. Mechanically RIGHT, extremely rugged. We have plenty of 16-year-old grinders in use today.

## BED KNIFE GRINDER



For busy production, use this machine for bed knives and concentrate your Carpenter Grinder on reel work.

Request "BULLETIN No. 43"

**GRAHAM MFG. CO.** 10 Bridge Street  
E. Greenwich, R.I.

testants and gallerites until lawyers got in to the act. . . . A private club of any race's membership can keep any non-member off the lot if members don't like the color of the uninvited visitor's eyes. . . . Private clubs are essential to staging of major tournaments.

Wonder who the illiterate was who first used that malapropism "invitational?" . . . It's as ridiculous as openal or amateural. . . . If the invitation event sponsors would prefer to use instead of "invitation" a word that's in the dictionary and still be fancy there is "invitatory," meaning "serving to invite; conveying an invitation." . . . And by the way, for the enlightenment of those who questioned GOLFDOM's style change from caddie to caddy, caddy will be found approved for caddie in newer dictionaries, among them the American College dictionary.

Emmett Kelly, who's been pro at Green Lakes GC, since it was opened in 1936 honored by members at club dinner. . . . They gave Kelly a cash tribute, too. . . . Servicemen of World War II in Australian national tournament at Lakes club. . . . Field restricted to 220. . . . Event of first World War vets grew to field of more than 500; too big to handle.

## PERFECT GRASS AT LOWEST UPKEEP COST



Mixtures carefully blended to your specifications or our special formulas for varying conditions of soil, climate and use.

**STRAIGHT GRASSES • BENTS**

High germination and purity.

TELL US YOUR PROBLEM

**ASGROW SEEDS**

Main Office: New Haven 2, Conn.





## Locker Room Mats that NEVER GIVE UP!

Get Pneu-Mat runners for your locker-room aisles . . . and then relax for years and years to come! Many of America's finest clubs have been using sturdy, spike-resistant Pneu-Mats for the past 12 years . . . and the first ones sold are still going strong!

Write for free catalogue on Pneu-Mats, Shower Room Mats, and Entrance-Hall Mats (in color, with club name!)

**A. N. BRABROOK** SAFETY MATS  
424 MADISON AVE. NEW YORK 17, N. Y.

Bob Craigs honored at big dinner at Audubon CC, Louisville, Ky. for his 35 years as pro there. . . . Don J. Nofs, who succeeded the late Barney O'Grady as Audubon mgr., put on a swell fiesta for the Craigs party. . . . Bob was at Standard club, Louisville, three years prior to going with Audubon.

Members plan to buy Westborough CC (St. Louis dist.) for \$325,000. . . . Club was first home of Westwood CC. . . . Twin Hills G&CC, 9-holes, opened at Joplin, Mo. . . . Mt. Lomond G&CC, Ogden, Utah, to open in spring. . . . Danville, Va., 9-hole muni course opened. . . . Bag and clubs or one year's free play offered to person who submits best name for the course.

Chick Harbert signs for three more years at Meadowbrook CC (Detroit dist.) . . . Patty Berg traveled more than 25,000 miles in 1948 on girl and woman golf promotion. . . . Jack Redmond, trick shot veteran tourist, suggests that PGA sections help finance their most promising younger pros for several weeks of winter tournaments.

Binghamton, N. Y., Ely Park muni course to have \$90,000 clubhouse. . . . Myers Park CC, Charlotte, N. C. building \$300,000 clubhouse and pool. . . . Alex Antonio, former state amateur star, now pro-mgr., Musconetcong



### FAR ABOVE PAR FOR GOLF COURSE CARE!

Keep greens and fairways weed-free, trees and shrubs in top condition—with a designed-for-the-job sprayer from Myers complete line. Choose from tractor-drawn, skid type, wheel-barrow type and 2-wheel utility models for gun or boom operations.

All precision-built to Myers traditional quality standards. Mail coupon today.



THE F. E. MYERS & BRO. CO., Dept. N-184, Ashland, Ohio.  
Send free literature on:

Myers Weed Sprayer  Complete Power Sprayer line

NAME \_\_\_\_\_

TOWN \_\_\_\_\_

COUNTY \_\_\_\_\_ STATE \_\_\_\_\_

Over **99%**  
**Pure**



On 50 Lbs. and Over We Pack Seaside  
And Triple A Bent in Tin Lined Cases.

## GRASS SEED of "Known Quality"

*Tested for Purity and Germination*

Assures Highest Grass Seed Content—lowest weed content. Starts faster—more plants—stronger Turf.

Seaside Bent, Cocos Bent, Triple A Bent, Velvet Bent, Colonial Bent, Astoria Bent, B-27 Kentucky Blue, Chewings Fescue, Illahee Fescue, Red Top, Rye Grasses, Alta Tall Fescue, Poa Trivialis, Bermuda and Other Grasses For Fine Turf Work and Special Mixtures For Greens, Tees, Fairways and Rough.

Write For Special Golf Prices

### Golf Course Equipment

Mowers, Sprinklers, Distributors, Flags, Hole Cups, Tee Towels, Miscellaneous Supplies and Equipment.

**2,4-D WEED KILLERS —  
Brown Patch Remedies**

Write for New 1949 Price List

*Stumpp & Walter*

132-138 Church St., New York 8,  
New York

GC, Hackettstown, N. Y. . . . Pete Goodman, pro-gpkr., Chillicothe (Mo.) CC.

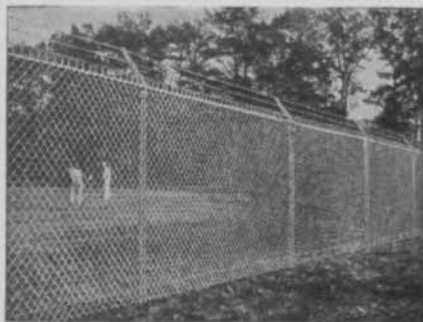
Toro Mfg. Corp. sales for 11 months ending Aug. 31, 1948 were \$5,341,705, exceeding record of 1947 fiscal year by more than a million dollars. . . . Hastings C. Reid in Golf in Australia suggests that instead of matches being decided by "sudden death" on one hole after the regulation 18 or 36, the extra hole match be decided when a player gets a lead of two holes.

Maybe epochal developments in golf turf will come from Green section test plots of zoysia japonica and B-27 bluegrass mixture and U-3 Bermuda and B-27 bluegrass mixture. . . . Director Grau says the mixtures are tough, drought tolerant, free from weeds (including crabgrass), and withstand wide range of climatic conditions. . . . Plenty of testing still to be done before Grau will get clear out on a limb but he says the mixtures so far look very promising.

Grau also says deep cultivation is greatest need of all turf in U. S. . . . Tells about 1948 use of aerifier in conserving water and, getting better turf, points to water conservation program on golf courses that will be substantial advance in results and economy.

## PAGE FENCE *-Since 1883*

• AMERICA'S FIRST WIRE FENCE •



### Choose the Right Fence

• The right fence for you is made by PAGE, pioneer maker of Chain Link Fence. It can be the one of several styles which is best suited to your needs, and it can be had in a choice of metals. Our nearby Association member will confer with you on the fence you need and submit cost estimates without obligation. Write for illustrated information and we will send his name. Address PAGE FENCE ASSOCIATION, Headquarters: Monessen, Pennsylvania.

A PRODUCT OF PAGE STEEL & WIRE DIVISION  
AMERICAN CHAIN & CABLE • BRIDGEPORT, CONN.