

Cooper
"CHAMPION"

POWER GREENS MOWER

**PROVED ECONOMY,
DURABILITY, AND
TOP PERFORMANCE
FOR ALL GREENS
MAINTENANCE**

**IMMEDIATE
DELIVERY**



**FINER GREENS
AT LOWER COST**

Mostly of aluminum material construction, which provides lightest weight possible. Smooth, evenly cut turf can be proved and the money saving advantages of power mowing may be enjoyed.

New type clutch and reel adjustment. Close coupled grass box and transport cart as regular equipment. Aluminum sectional rear roller with differential action. Aluminum front roller and convenient height adjustment.

Through scientific engineering design, the safe elimination of all dead-weight has been accomplished in the COOPER "Champion" greens mower, without sacrificing necessary strength and durability.

Being light in weight, the "Champion" will not pack greens. New clutch design, with soft starting torque, engages without grabbing, eliminating scuffed or marred turf. Specially constructed high speed reel, insures smooth-cut turf with no corrugations. Short wheel base and short coupled construction of front roller and cutting knife, prevent scalping, especially on terraced or uneven contours. WRITE TODAY FOR LITERATURE AND COMPLETE INFORMATION.

COOPER MANUFACTURING COMPANY

409-411 South First Avenue

Marshalltown, Iowa

Smooth the way with BETTER GRASS

Eliminate continuous feeding—*one complete feeding annually for the famous Raritan Velvet Bent gives a luxurious, healthy turf.*

Certified Blue Tag Quality—99% pure or better. Seed one pound per thousand feet of green.

Famous Wagner improved methods of growing and harvesting make possible *reduced prices.* Supply ample.

GRANDE RONDE Valley HARDY, DROUGHT-RESISTANT GRASS SEED
FESCUE—ILLAHEE, CREEPING, CHEWINGS & ALTA
BENTS—HIGHLAND, ASTORIA, SEASIDE & VELVET
H. L. WAGNER & SONS IMBLER, OREGON
Eastern Representative **C. W. BAKER** P. O. BOX 221
MILFORD, CONN.

job of attracting and serving patrons other course owners think their hard-working pros also are becoming millionaires. . . Well, we've seen a lot of fee courses go broke when first class pro service would have brought business and made money all around.

Herb Heinlein, sec.-treas., Central Penna. Gkprs.' Assn., now owner, pro, gkpr., mgr., Old Fort CC, Indiana, Pa. . . Herb was with his dad, M.J., Jr., owner, and his brother, Harold, pro, at Bon Air GC (Pittsburgh dist.) before he went into the navy for 2 years. . . Herb came to Indiana March 1, 1947 and increased play by improving course condition. . . It's a 9-hole layout.

Charley Rouse, well known for years of service at country clubs in northern Chicago dist., is Republican candidate for sheriff of Lake County, Ill. at primaries, April 13. . . Charley was in the sheriff's office for years but was forced out when bosses of gambling in Lake county found Rouse couldn't be handled. . . Special grand jury indictments of some of the gambling mob makes Rouse chances look good. . . The hoods are spending heavy to defeat him.

Theodore P. Bank, pres., Athletic Institute, in Washington to get congressional committee to lift ban on building of golf clubhouses and other recreation facilities.

John BEAN GOLF SPRAYERS



JOHN BEAN SPRAY BOOMS are ideal for spraying turf chemicals. Separate feed lines deliver equalized amounts of material to the right, left and center boom. Boom wings fold back to avoid obstacles, or for traveling and drag markers indicate areas that have been sprayed.

GIVE THOROUGH COVERAGE FASTER

When you equip with John Bean sprayers and special 20 nozzle weed booms, ridding fairways, roughs, greens and fences of weeds is a fast, easy, one-man job. The John Bean weed boom delivers a coarse driving spray with a minimum of "drift," in controlled volume for your own spraying practice. John Bean sprayers are sturdy and reliable and are available in an output range of 4 to 60 gallons per minute. Write for the name of your nearby John Bean Dealer.

JOHN BEAN

DIVISION OF FOOD MACHINERY CORPORATION
LANSING 4, MICHIGAN



COMPLETE RANGE OF TYPES AND CAPACITIES TO FIT YOUR NEEDS

TRUCK MOUNTED OR POWER TAKE-OFF. Your choice of engine powered or power take-off models to suit your needs and equipment.

BIG OUTPUT RANGE. John Bean sprayers deliver from 4 to 60 gallons per minute at 10 to 800 pounds pressure, depending on the model selected.

FIRE PROTECTION. For emergency control of grass or building fires, John Bean high pressure sprayers are ideal stand-by units.

.. Snowstorms caved in roofs of tractor and compost sheds in New York and New Jersey this winter. . . Jimmy Nichols, one-armed golfer of Spalding staff, playing exhibitions in the southeast. . . Leo J. Walper, constructing "Parhaven" golf range between Pinehurst and Southern Pines, N.C. . . Range operators reporting that putting courses are getting heavy play.

Robert Bruce Harris, Chicago golf architect, remodeling North Hills CC (Milwaukee dist.). Pro-gkpr. **George Calderwood** supervising the work. . . Harris starting work on new Standard CC course, Louisville, Ky., this spring. . . To be championship layout. . . When Standard club moves to its new location its present course will be taken over by Veterans' Administration. . . Ground also will be broken this spring for Harris course with 9 holes in Minnesota and other 9 across Red river in North Dakota. . . **R. J. Hughes**, Wahpeton, N.D., heads that club.

Henry P. Cowen re-elected pres., MacGregor Golf, Inc. at recent directors' meeting. **Stanley Clark**, former sec., was elected vp.; **William A. Koegel** was elected a vp.; **Walter E. Gaver**, treas., and **Anthony G. Koegel**, sec.

C. L. Hornung, owner, Pro Golf Sales Co., after making southern swing from Florida to Texas, inclusive, says bad weather has



1948 CATALOG AND PRICE LIST

Most complete line of supplies and equipment for Golf Courses.

Grass Seed • Fertilizer • Equipment

Send for them today

GEORGE A. DAVIS, Inc.

5440 NORTHWEST HIGHWAY, CHICAGO • AVENUE 6130

*Get the JUMP
on WEEDS This Spring!*

YOUR DEALER HAS WEEDANOL BRAND

2:4-D Lawn Weed Killers

"A type for every need

—A need for every type"

ASK HIM!

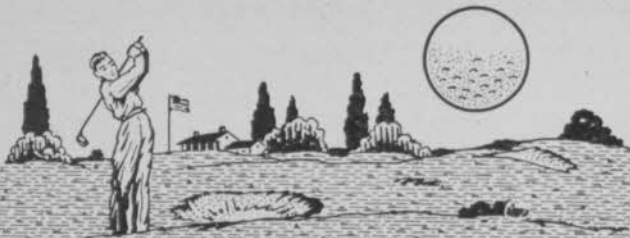


Manufactured by

ASSOCIATED CHEMISTS, INC.

NORTH COLLINS, NEW YORK

DBA



LIQUID LUSTRE GOLF BALL WASH

Washes balls quickly and easily. Harmless to paint. Contains no harmful chemicals or abrasives. Place a trial order now, and let results speak for themselves.

Order immediately to be assured of early delivery.

Price: \$4.50 per gal.

5 gal. can, \$21.50

Order from your dealer or direct from

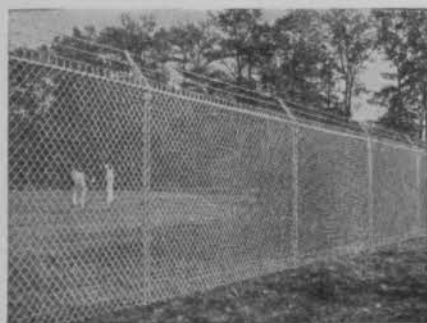
D B A PRODUCTS CO. Dept. GD3 DEERFIELD, ILL.

** (Golf Supply Dealers write for complete details) **

PAGE FENCE

- Since 1883

• AMERICA'S FIRST WIRE FENCE •



Choose the Right Fence

• The right fence for you is made by PAGE, pioneer maker of Chain Link Fence. It can be the one of several styles which is best suited to your needs, and it can be had in a choice of metals. Our nearby Association member will confer with you on the fence you need and submit cost estimates without obligation. Write for illustrated information and we will send his name. Address PAGE FENCE ASSOCIATION, Headquarters: Monessen, Pennsylvania.

A PRODUCT OF PAGE STEEL & WIRE DIVISION
AMERICAN CHAIN & CABLE • BRIDGEPORT, CONN.

delayed business the pros expected. . . Hornung says he had no kick himself on his new ball and gooseneck irons and thinks that sales pressure will help pros make up for disappointing winter sales. . . But they will need to apply some forced draft in selling to bring 1948 volume up to expectations, he opines.

R. A. Jones, for 21 years gen. mgr., Baltusrol GC, now is mgr., Country Club of Detroit. . . Tri-State Professional Golfers' Benevolent Assn. to be beneficiary of Dapper Dan \$15,000 Open to be played at Alcoma CC (Pittsburgh dist.) July 15-18. . . "Championship Golf" by Mildred (Babe) Zaharias being published by A. S. Barnes Co., New York. . . Jack Smith now pro at Beaumont (Tex.) CC. . . Fred Pignone, London Daily Mail golf writer, says England's winter tournaments mostly cancelled because of gas rationing.

Charley Mayo, Hackensack CC, Oradell, N.J., elected pres., PGA Seniors. George Norrie, Idle Hour CC, Macon, Ga., retiring pres., made hon. pres. Charles Lorms, Columbus (O.) CC elected first vp.; Mike Brady, Haverhill, Mass., second vp., and Eddie Williams (Louisville, Ky.) CC, re-elected sec.

Fred Corcoran to take over the late William D. Richardson's job as editor of A. S. Barnes & Co. annual golf guide. . . Jeff



● Hardie Golf Sprayers are readily adaptable to many different requirements. Available in many sizes and models, they squarely meet every operating requirement and budget necessity. A Hardie High Pressure Sprayer affords the most economical means of

applying weed control, liquid fertilizer, brown patch control and spraying trees, shrubs and water painting buildings and fences. The illustration shows a Hardie Golf Sprayer with weed spray boom mounted in front of the light truck. Write for the Hardie 1948 Catalog showing modern spray equipment for golf course maintenance.



The Hardie Mfg. Company

Los Angeles 11, Calif.

Hudson, Mich.

Portland 9, Oregon

C. W. Lewis & Son, Ltd.

Grimsby, Ont.

Canada

Export Dept.

Detroit 26

Hardie

Dependable Sprayers

Modie, pro at Atlanta (Ga.) Highlands CC, died late in January after returning to Atlanta from a Florida trip during which he was stricken. . . Modie had been pro at James L. Key muni course at Atlanta prior to going to Highlands.

Thomas L. McNamara, 35, died late in January at Mt. Vernon (N.Y.) hospital after being stricken with a heart attack while at work as salesman for Wilson Sporting Goods Co. . . . Young Tom is survived by his widow and three children. . . His dad, one of the first of the great home-breds, also died of a heart attack. . . Young Tom, like his father, was a quiet, helpful and beloved fellow who knew a lot about golf. . . He is mourned by everyone who knew him. . . The sudden passing of this fine young man is a tough one on all of us who saw in him a bright reflection of his estimable father.

James E. (Sonny) Fraser, who a decade ago was one of the best amateurs of the country, was named co-winner with Lou Brissie, Purple Heart baseball rookie, of Philadelphia Sports Writers' "most courageous athlete of the year" award. . . Sonny got his award for his battle against Hodgkin's disease. . . He's a brother of Leo, pres., Atlantic City (N.J.) CC. . . Willie Maguire, ailing at his home in Houston, given plaque by PGA in appreciation of his services to professional golf. . . Darrell

March, 1948

CUT GROUNDS COSTS

with a
Stanley No. 199
GRASSHEAR



You can use the Stanley Grasshear to cut grass around sand traps, and other places on the course which the hand or power mower won't reach. It is equally useful for trimming flower beds, shrubbery, walks around the clubhouse. Guard gives operator full protection. Light and well-balanced. Adjustable to individual height. Operates from portable generator or current outlet — AC or DC, 110 volts. Send for folder. Stanley Electric Tools, 483 Myrtle Street, New Britain, Conn.

THE GREATEST NAME IN TOOLS

STANLEY
Reg. U.S. Pat. Off.

HARDWARE · HAND TOOLS · ELECTRIC TOOLS

VELVET SMOOTH TURF



HYPER-HUMUS

is first aid in making
THICK SMOOTH GREENS
BETTER FAIRWAYS

Used regularly on many of the finest courses in the country. It will benefit yours. Greenkeepers and Greens Chairmen are invited to write for full information and help in solving soil problems.

Genuine HYPER-HUMUS is:

- Aerated and cultivated to encourage desirable soil. Puts new life into dead soil.
- Uniform in quality.
- Free from weed seeds and insect larvae.
- Supplies beneficial bacteria.
- Holds and regulates moisture.
- 85% to 90% pure organic matter.
- Easy to apply.

Write us about quotations and deliveries. Let us help you with any special problem.

HYPER-HUMUS CO.

Box G

Newton, N. J.



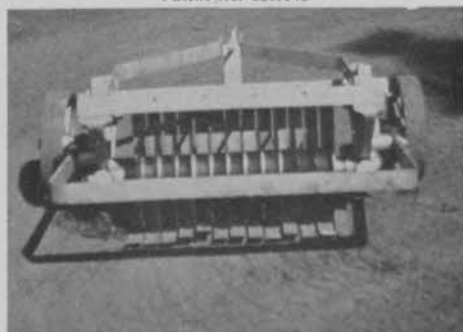
Napier, pro at CC of Virginia, succeeding Bobby Cruickshank. . . Cruicky is considering several offers where season will not conflict with his de luxe winter spot at Gulf Stream.

Jack Jolly sends us a copy of St. Andrews Citizen containing a column and a third obituary of Laurie Aucterlonie who died Jan. 20 at St. Andrews at age of 80. . . Laurie won the 1902 U. S. National Open and the Western Open in 1901. . . He developed several men and women American amateur champions. . . He returned to St. Andrews in 1911. . . When he was 67 he equalled George Duncan's pro record of 67 on the St. Andrews Old Course. . . Laurie is survived by his widow, a son and a daughter, and by his brothers, Joseph, 85, Willie and Tom.

Frank Walsh makes excellent use of his film library at Red Run GC (Detroit dist.). . . He shows films to members when weather is bad. . . It brings a lot of them out to the club for lunch. . . American magazine survey of readers shows golf runs next to fishing and baseball as favorite outdoor sport of men readers under 36 and is tied with baseball and hunting in interest of men over 36 with whom fishing is first choice of outdoor sport. . . Grand Hotel, St. Andrews, sold for \$320,000 to Roman Catholic bishops of Scotland for training

GREEN DRAGON

Patent No. 2267943



ALL-PURPOSE CULTIVATOR *for Fairways and Greens*

Aerates packed soil and permits deeper penetration of fertilizer, top-dressing and water—removes grain from greens turf—easily operated without interruption to play. Weights on tray over axle regulate cutting depth. Circular knives of high grade knife steel.

Now in full production. Prompt deliveries.

Write for price and literature to manufacturer:
BUEL MACHINE CO., Woburn, Mass.

college for school teachers. . . Sale subject to St. Andrews Town Council. . . Sale of 50 year old 80-room hotel protested by some account of shortage of tourist housing facilities in the town.

USGA issuing embossed and framed resolutions of thanks to clubs on which USGA national championships are held. . . In Metropolitan GA 50th anniversary report (for 1947) MGA Green section, Eugene L. Larkin, chmn., says: "Of course your supt. knows most of the answers but there are times when decisions must be made and there should be someone he can consult. Get a good green chairman and keep him."

Ollie Painter is calling attention to Lou Cook, a radio announcer, who broke the amateur competitive record with a 64 at Ollie's San Fernando Valley CC, Woodland Hills, Calif. . . . Cook has a left arm withered by polio in childhood. . . Exercise has developed strength in lower left arm. . . This Cook and Ed Furgol explode old theories about the left arm. . . 26 events already listed on Netherlands golf tournament program for this year. . . Golf having a great postwar comeback there. . . The way Flory van Donck, Dutch pro, played in British events last year, shows Netherland golf has class. . . Naval officer writes Spalding he's been playing with a Spalding



Scott's TURF
STANDS UP UNDER
PLAYER TRAFFIC

Year after year Scott's Seed and Golf-Park fertilizer makes better turf for more enjoyable golf. Write for prices and ask about the new Scott Weed-Feed product for healthy weed-free turf.

O. M. Scott & SONS CO.
 23 Park Avenue Marysville, Ohio

S E R V I N G T H R O U G H S C I E N C E

**Good News for
Greenskeepers**

**Ants, Japanese Beetle Grubs,
Cinch Bugs Killed with**

SYNKLOR

NEW CHLORDANE INSECTICIDE

SYNKLOR-50 W—a wettable powder containing 50% by weight of Chlordane.

SYNKLOR-48 E—an emulsion containing 48% of technical Chlordane. One quart contains one (1) lb.

Ants—8 oz. of Synklor-50 W or ½ pint of Synklor-48 E in 25 gallons of water per 1,000 sq. ft. of turf.

Chinch Bugs and Japanese Beetle Grubs—twenty pounds of Synklor-50 W applied as a dust per acre or 2½ gallons of Synklor-48 E in 100 gallons of water per acre.



Write for technical data sheet on turf insect control with Synklor.

UNITED STATES RUBBER COMPANY

Agricultural Chemical Division

1230 Rockefeller Center • New York 20, N.Y.

Turf-Maker LAWN SEED is finest

Turf-Maker mixtures are adapted to local conditions — composed of the finest grasses available.

To HELP YOU — Woodruff's Turf Specialists are always available for consultation on your Turf problem. No obligation.



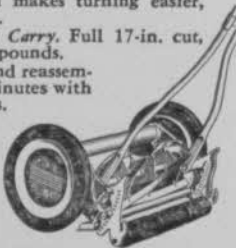
For smooth running you can't beat the CLEMSON E-17 LAWN MACHINE



It's built 7 ways better — to cut smoother, last longer . . . to cost less in the long run.

1. *Cutting Height* set with fingertip adjustment pins.
2. *Shear Adjustment* with two wingscrews gives perfect alignment of reel to bed-knife.
3. *Handle Suspension* eliminates bobbing on bumpy ground.
4. *Rigid bed-knife* is an integral part of frame.
5. *Roller Can't Split or Warp.* Molded plastic, three-section design makes turning easier, ends scuffing of sod.
6. *Easier to Push and Carry.* Full 17-in. cut, yet weighs only 29 pounds.
7. *Quick disassembly* and reassembly in a matter of minutes with the simplest of tools.

Sold exclusively through wholesale distributors to retail channels by the makers of world-famous Star Hack Saw Blades, Frames, and Band Saw Blades.



CLEMSON BROS., INC.
Middletown, N. Y. U.S.A.

© 1944

Dot that's 7 years old and which he's carried during more than 30,000 miles.

L. E. Therien, mgr., Dupont CC, Wilmington, Del., where tournaments have been held for men from Dupont plants all over the country, is considering a national industrial championship. . . Pros at industrial courses are asked to write Therien telling him what they think of the idea. . . It looks like a very smart thing for pros at company courses to promote.

Pete Grandison, pro, Woodmont CC, Nashville, Tenn., wears a glove on each hand while he's teaching. . . When pupils ask him why he replies "they save my hands." . . . And that's why Pete sells a lot of gloves. . . Tom Dougherty now gen. mgr., Springhaven Club, Wallingford, Pa. . . Tom started with the club 30 years ago as a caddie. . . Became gkpr., then supt.

First annual Pro-Greenkeeper tournament between members of the Midwest Assn. of Golf Course Supts. and the Ill. section of the PGA will be held May 10 at the Tam O'Shanter CC, Chicago. . . Pro and greenkeeper from each club will team up for a day which should bring about a more cooperative understanding of mutual problems as play progresses. . . Dinner and entertainment in the evening will top off a grand event for those who attend.

ATTENTION GREENKEEPERS!

At last — a 100% soluble liquid fertilizer that will help you keep those greens and fairways in better shape, with less work, the year around.

Yes sir, "Na-Churs" Liquid Fertilizer is based on a recommended formula as developed by The Ohio State University, and it contains the proper nutrients necessary for producing and maintaining greener, thicker, healthier turf.

"Na-Churs" is easy to apply; saves time, money and labor, and can be applied with your present equipment. Leading golf courses, the country over, are using this proven liquid fertilizer. Write Dept. E today for full information and introductory offer.

**"NA-CHURS" PLANT FOOD
COMPANY Marion, Ohio**

GSA CONVENTION NOTES

Grand job the Michigan and Border Cities Golf Course Supts.' Assn. did in putting on the GSA convention and exhibition.

Ward Cornwell, Lochmoor CC, was genl. chmn. of the M&BC committee. Clarence Wolfram, Maple Lane GC, and W. Bruce Matthews, Green Ridge, were asst. chmn. and David Kennedy, sec. Sub-committees were headed by William Smith, Ford Goodrich, George Prieskorn and William Philipson.

Ford plant tour, ladies affairs and a night club party in Canada were features of the entertainment program.

Added attractions and stars of the Canadian evening were the 7-year-old twin daughters of the John Darrahs. Penny and Shirley in a song and dance routine showed decided talent and charm that may be heading them for Hollywood and an income that beats greenkeeping.

Exhibition space was a complete sell-out. Sales were good and hot inquiries were numerous. Clubs are going in for stocking up with new equipment and materials.

Detroit District GA Green Section committee at its booth distributed copies of its interesting 1947 annual report. One of the features of it was a discussion between greenkeepers and tournament players on tournament turf conditions.

START Irrigation Plans HERE...



Choose your sprinkler heads first and save — their specifications directly affect pipe and plumbing equipment needed.

- Courses all over the country have chosen RAIN BIRD Sprinkler Heads —available in a wide range of models that lets you choose exactly the irrigation needed. By choosing the right RAIN BIRD heads first, you may save a great deal of money on piping. Write for catalog.

L. R. Nelson Mfg. Co., Inc.

PEORIA, ILLINOIS

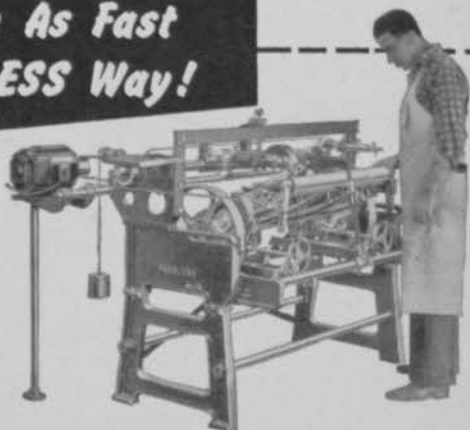
Manufacturers of Lawn and Golf Course Sprinkling Equipment • Overhead Irrigation
• Since 1911

Cut Grass Twice As Fast The Easy PEERLESS Way!

Mowing time can be cut—often as much as 50 per cent—when grass-cutting blades are razor keen. Greens and fairways look better quicker—stay well-kept longer—when you have your own Peerless Sharpener. There's no "going over" a second time when your blades are Peerless Sharpened. A Peerless edge cuts closely, evenly, smoothly—and does it right the first time!

Peerless' fast-cutting grinding wheel gives any type of mowing blade a keen, smooth edge. Its rugged, precision mechanism gives years of trouble-free service. Write today for complete information.

P. S.: Peerless Sharpeners are perfect for estates and country places, too.



Works with Any Mower • Easy, Simple to Operate • Accurate and Durable • A Keen Cutting Edge Every Time

PEERLESS SHARPENERS
The Popular Choice
Since 1909

The FATE-ROOT-HEATH COMPANY • Dept. D-1, Plymouth, Ohio

**FOR GREATER BEAUTY
FOR LONGER SERVICE**

**Fly DETTRA Bulldog
FLAGS**

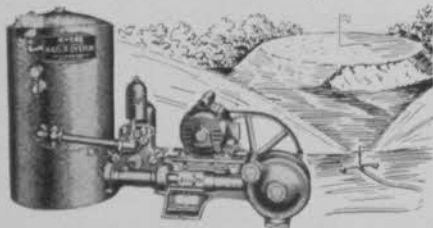


- U. S. FLAGS
- CLUB PENNANTS
- GOLF FLAGS
- DIRECTION FLAGS

Here are the finest, most durable flags you can buy for outdoor country club use. Good-looking, economical to fly. Superbly made for maximum service of extra strength Bulldog Bunting, adopted by U. S. Government as standard for flag quality. Bright colors, everfast to sun and rain, stay brighter longer. Completely moth-proof. Ask your local dealer or write us direct. There are Dettra Flags for every club purpose.

DETTRA FLAG COMPANY, INC.
Oaks, Montgomery County, Pennsylvania

**Adequate Water
Service Pays!**



There's a dependable Myers Water System that will supply plenty of water at low cost for your needs—for watering fairways and greens; spraying weeds; for locker and shower rooms, complete water service in clubhouse and other buildings. See your Myers dealer and inspect the wide range of *Ejecto* and *Plunger* Types. Capacities up to 4500 gallons per hour; pressures up to 250 pounds. Write for catalog.



THE F. E. MYERS & BRO. CO.
Dept. K-181, Ashland, Ohio

**Demonstration Programs Feature
Club Managers' Annual Meeting**

Club Managers Assn. of America's 20th annual convention to be held at Minneapolis, March 14-17 will be featured by one of the most extensive demonstration programs presented at the managers' annual session. The Upper Midwest chapter of the association which is host to the event has arranged a program that begins with a choice of churches to attend the morning of the opening Sunday and concluding with the annual formal banquet and dance at Radisson hotel, St. Patrick's day evening.

Affairs will be held for managers at the Minneapolis club, Minikahda club, General Mills, Pillsbury Mills, University of Minnesota Campus club, Minneapolis AC, Lowell Inn, Dayton Co. Sky Room and the Women's Club of Minneapolis in addition to the affairs to be held at the Radisson. The smorgasbord to be put on March 15 evening at the famed Minikahda club where Richard Hirmke is manager is something to which studious managers are looking forward with keen interest. The smorgasbord slant version of the buffet meal puts a class and novelty aspect to this type of service. The Scandinavian influence in Minneapolis, the genius of Hirmke, the chef and the rest of the Minikahda club's staff in making this sort of service a factor in Minikahda's nation-wide reputation make the affair one to be studied as well as enjoyed.

**CUTS TALL GRASS...
WEEDS...BRUSH...**

Faster and Easier

The JARI cuts fast and clean on rough and off-traffic areas, around trees, buildings, and water traps. Mows 4 to 6 acres in 8 hours. Cuts 36" swath, 1 1/2" from ground.

Easy to handle on rough ground or steep slopes.

EASY TO LOAD

Light in weight, one man can very easily load a JARI into a car trunk or truck, and quickly

move from place to place.

Fast starting 1 1/2 H.P. engine provides plenty of power for toughest weeds and brush. Sturdy. Dependable.



Write for **FREE Folder Today**

JARI PRODUCTS, Inc.
2934-A Pillsbury Ave.
MINNEAPOLIS 8, MINNESOTA