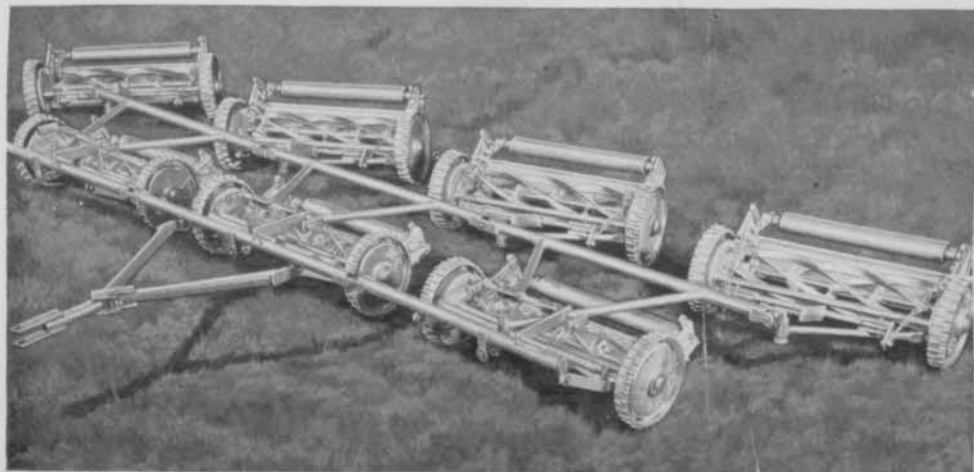


# TAKE IT EASY!

That's good advice whether  
you're playing a course, or

# MOWING A COURSE!



## USE IDEAL'S NEW TUBULAR GANG MOWER WITH "NEW BULLDOG" CUTTERS

You can stay within your budget and still "take it easy" when mowing your fairways — and keep the turf in better condition. Lower costs are possible with Ideal's New Tubular Gang Mower with "New Bulldog" cutters. You have the advantage of much wider cuts — you can haul more mowing units with the same motive power formerly used, as all excess frame weight has been eliminated. Easier to maneuver — less trimming around trees and traps — gangs available for cutting 7' to 25' widths. Specially designed for golf course mowing.

Ideal's "New Bulldog" cutting unit (Model GC) has a newly developed clutch throw-out, and the sturdy dependability of Ideal's other "Bulldog" mowers. All "Bulldog" cutting units are adaptable for proper mowing in various sections of the country where soil conditions differ.

The reliable Ideal "Greensmower" is famous for producing greens surfaces so perfect that the correctly aimed putt drops in.

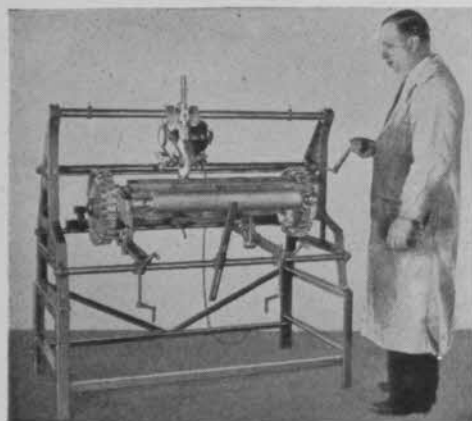
Your Ideal Dealer will be glad to discuss the advantages of Ideal's Golf Course Equipment.

3 GANG	7 ft.
5 GANG	11½ ft.
7 GANG	16 ft.
9 GANG	20½ ft.
11 GANG	25 ft.

Determine the most  
economical cutting  
width for your  
golf course.

For Golf Course Catalog, write Dept. G68.

**IDEAL**  
*Power*  
**LAWN MOWER**  
Division of  
INDIAN MOTORCYCLE CO.  
Springfield,  
Massachusetts



If you want the grinder  
whose users say —

**"We are able to turn out a perfect job  
in far less time than ever before"  
here it is — the**

## **CARPENTER LAWN MOWER GRINDER**

In its 15th season serving the nation's leading golf clubs, the Carpenter Grinder is a marvel of precision, simplicity and speedy work. Study these features. **NO OTHER GRINDER OFFERS SUCH A DESIRABLE COMBINATION OF ADVANTAGES.**

1. Machine is complete without accessories, no hoist or auxiliary holding device needed.
2. The one cradle holds either reel or bed knife.
3. Accommodates all sizes of mowers including the largest tractor drawn units.
4. Grinds to any desired bevel, following manufacturer's grind.
5. Coarse and micro adjustments of grinding head provide speed and precision.
6. Overhead grind and **EXCLUSIVE ARC-ADJUST TRAVERSE** positively assure **AN EVEN CUT ALL ACROSS.** **THE GRAHAM DEFINITELY EXCELS IN THIS RESPECT.**
7. Entire setting and operation is without tools.
8. No mechanical teaming or grinding experience needed to operate with 100% results.
9. Mechanically **RIGHT**, extremely rugged. We have plenty of 15-year-old grinders in use today.

Here is **THE** grinder for a club that must have velvet greens and well-kept fairways, and wants to keep its mowers on the job, not always lined up in shop awaiting grinding. Get complete illustrated bulletin and price data **NOW.**

Request **"BULLETIN No. 43"**

**GRAHAM MFG. CO.** 10 Bridge Street  
E. Greenwich, R.I.

boxing champion of un-sugary war-time performance, is sponsoring a \$2,560 open at Engineers club (NY Met dist.) July 26-28. . . Lot of rehabilitation work done in bringing summer resort courses into good condition for this season. . . Add to the list of Forgotten Men: Skip Alexander on the Goodall Round Robin invitation list and Ellie Vines on the PGA membership eligibility list. . . Skip was 6th in winnings (\$7,447.50) and 8th in average score (70.87) for first four months of tournament circuit. . . Vines has been a pro more than five years.

Alex Ogilvie, Sr., 61, pro at Beechwood CC (Cleveland dist.) for 22 years, died May 5 of a heart attack at Cleveland. . . Alex came from Leben, Scotland, in 1910. His first U.S. pro job was at Morristown, N.J., then he went to St. Andrews GC, Hastings-on-Hudson, N.Y., where he remained for 7 years before going to Beechmont. . . Among his pupils at St. Andrews was Dorothy Campbell Hurd, 3-times U.S. women's National champion. . . Alex is survived by his widow; two sons, Alex, Jr. and Joseph; and his brother, Dave, who has been pro at Oakwood CC (Cleveland dist.) for 34 years. . . Alex richly merited the honors and high regard that were his for his friendliness.

## **ATTENTION GREENKEEPERS!**

At last — a 100% soluble liquid fertilizer that will help you keep those greens and fairways in better shape, with less work, the year around.

Yes sir, "Na-Churs" Liquid Fertilizer is based on a recommended formula as developed by The Ohio State University, and it contains the proper nutrients necessary for producing and maintaining greener, thicker, healthier turf.

"Na-Churs" is easy to apply; saves time, money and labor, and can be applied with your present equipment. Leading golf courses, the country over, are using this proven liquid fertilizer. Write Dept. E today for full information and introductory offer.

**"NA-CHURS" PLANT FOOD  
COMPANY Marion, Ohio**

# TAT Soilicide

Contains PMAS

DUAL ACTION • DOUBLE VALUE



at a Single  
Labor Cost

**"Pleased - SUCCESSFUL - REMARKABLE!"**

*(These are Users' Words — Not Ours)*

We are very well pleased with Soilicide ... there was no browning of the bent grasses at all ... crabgrass was virtually eliminated and the bent grass had grown in where the crabgrass had been. There was no trace of brown patch on the greens that had been treated with Soilicide.

—Ludvig Nelson, Minikabda Club  
Minneapolis, Minn.

During 1947, TAT Soilicide was used on eight of the worst greens at the Essex County Country Club ... Dollar Spot and Brown Patch were eliminated entirely or at a complete minimum ... crabgrass seedlings were (also) killed and crabgrass reduced to a negligible quantity. Bent and other turf grasses treated with Soilicide were not injured.

—John Anderson, Essex County C. C.  
West Orange, N. J.

Letters like these come from all over the country — from Maine to Florida, from Virginia to California. Hundreds of greenkeepers are unanimous in their praise of Soilicide, both as a crabgrass killer and for effective control of fungus diseases. TAT C-LECT and Soilicide are odorless liquids, extremely economical, and will not endanger the most delicate turf grasses. Each application does two important jobs, and if purchased in bulk, the cost per application for a 5000 sq. ft. green is less than 75 cents.

**TAT C-LECT BULK SPECIAL.** This is identical to TAT SOILICIDE except in more concentrated form. Can be appropriately diluted for use as a fungicide or for crabgrass control on greens, fairways, tees or aprons. Represents lowest cost for large users. Only available in 15 and 53 gallon drums.

**TAT WEED C-LECT.** The only 2,4-D formula specifically compounded for mixing with TAT C-LECT SPECIAL or TAT SOILICIDE to permit killing most broad leaf weeds during same treatments. Packed in 1-5 and 53 gallons. Order now from your dealer. If he cannot supply you, please write us enclosing his name.



I thought you would like to hear of the remarkable results I experienced this last summer with your product, TAT Soilicide ... to my surprise (the crabgrass) completely disappeared leaving no trace of where it had been. As to its qualities as a fungicide, I had no brown patch for the remainder of the season and we are ideally situated for fungus diseases here.

—K. J. Cook, Willow Wood C. C.  
Hinton, West Va.

The use of Soilicide proved very successful here, although the plants were matured enough to start runners ... I can also add that we had no brown patch or dollar spot during these applications.

—Oliver Rogers, Forsgate C. C.  
Jamesburg, N. J.

**O. E. LINCK CO., Clifton, New Jersey**

Canadian Sales: Canada Rex Spray Co. Ltd., Brighton, Ont.

★ Buckeye

7 BLADE BENT GRASS  
*Lawn Mower*  
FOR  
GOLF COURSES

NOW AVAILABLE  
Model 700

Light weight, 7 cutting blades for smooth cutting. Crucible alloy steel knives. Ball bearing reel. 10-inch semi-pneumatic tires. Rubber roller. Steel handle. 16-inch cut.



ALSO  
AVAILABLE  
Model 900 push  
type tractor  
mower.  
20-inch cut.

Inquiries  
solicited.

**MAST-FOOS** *Manufacturing Company*  
LAWN MOWERS SINCE 1880  
SPRINGFIELD, OHIO

helpfulness and great service in building American golf. . . He was one of the grand old guard who'll be missed by thousands of us.

Illinois PGA - Midwest Golf Course Supts. golf tournament rained out on May 10 at Tam o'Shanter CC. . . The boys had an informal dinner meeting and planned holding their get-together in Sept. . . . Tam's head, George S. May, had Mgr. Herb Koepke pop with champagne for the dinner crowd. . . George is the guy who helped put tournament pros on a champagne diet. . . They take it only in mild doses, though, and only for medicinal purposes after making out their income taxes. . . Some day somebody like George is coming along to put star greenkeepers in the big money spotlight.

With courses being given arsenic treatment for grubs this is a bad time of the year for members to nervously chew grass, reminds Long Island City Star & Journal golf writer John Brennan. . . Failing to remember the name of Nebuchadnezzar the proud king who had to "eat grass as oxen" I consulted the concordance and found there were 49 references to grass in the Bible. . . Quite a few of them will console the greenkeeper and

30 years of specialized engineering in golf watering  
equipment assures lasting dependability when you . . .

*specify*

**BUCKNER**



BUCKNER PERFECT CURTAIN OF WATER — SYMBOL OF DEPENDABLE COVERAGE

From the smallest watering unit to the completely equipped system you will find models in the wide Buckner range to meet every requirement.

*Special Representatives:*

7658 CALUMET AVE., CHICAGO, ILL.

7280 MELROSE AVE., LOS ANGELES, CALIF.

● BUCKNER MFG. CO. ● FRESNO, CALIF. ●

### FOR TOP-DRESSING

"Both of our Aerifiers are on the go six to eight hours daily. Enough soil is brought up to top-dress the area cultivated — and such an economical way to do it!"

**O. S. Baker**, Greenkeeping Supt.  
Indian Creek CC, Florida.

### IMPROVE SOIL STRUCTURE

"To us, it looks like you have a machine that will, if used regularly and with the proper top-dressing mixture, be able to completely change the physical structure of soils without greatly disturbing the playing surface."

**J. E. Hamner**, Greenk'p'g Supt.  
The Memphis CC, Tennessee.

### PREPARE SEEDBED

"Aerification of existing turf before seeding is beneficial. Seed has a chance to become established in the loose, moist soil in the holes made by the Aerifier."

**Mal McLaren**, Greenkeep'g Supt.  
Oakwood Club, Ohio.

### PLANT STOLONS

"We intend to change our greens over to Arlington Bent. The Aerifier is being used to perforate greens before stolons are planted."

**James Thomas**, Greenk'p'g Supt.  
Farmington CC, Virginia.

### EFFICIENT FERTILIZING

"Cultivation of turf with the Aerifier enables us to place necessary chemicals down in the soil where they are needed, instead of on the surface where they may be washed away."

**Joseph Valentine**, Grnkpg Supt.  
Merion GC, Pennsylvania.



# you could use an AERIFIER

Golf course maintenance requires the greenkeeping superintendent to do many jobs. The Aerifier can help to accomplish a variety of these. Use it to prepare a seedbed in existing turf, or to perforate greens for sprigging in bent-grass stolons. Loosen soil so water, lime and fertilizer can penetrate down to grass roots. Rake up soil cores so new materials can be worked into greens, or break up soil cores to serve as a light top-dressing.

Use the Aerifier on fairways, tees and greens. Large and small diameter hollow spoons can be interchanged on the same machine. Adjust for deep cultivation or surface scarifying. Use a single unit or a triplex gang. There is a place for the Aerifier in your maintenance program.

*For complete information see your dealer, or write to:*

*West Point Lawn Products  
West Point, Pa.*



### FOR FAIRWAYS

"We intend to make aerification a regular part of our maintenance program. All fairways should be aerified at least once a year, preferably before fertilizer is applied."

**Emil Mashie**, Greenkeep'g Supt.  
Onwentsia Club, Illinois.

### FOR GREENS

"Aerification of greens with the half inch diameter spoons did not cause any more disturbance to the playing surface than would have been caused by applying top-dressing."

**Gus DeFelice**, Greenkeep'g Supt.  
Wilmington CC, Delaware.

## MODERN LAWN MOWER SHARPENER

- Increase Productivity
  - Speed-up Maintenance
- DELIVERY NOW!**

**12** reasons why THE MODERN LAWN MOWER SHARPENER is being used as standard equipment at leading clubs.

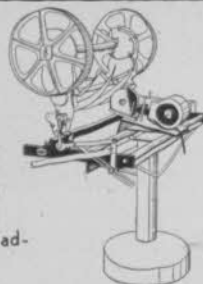
Check these features. 1. Sharpens all reel type power and hand mowers in from ten to twenty minutes without dismantling. 2. Sharpens to extreme ends of both left and right twist reel blades. 3. 5-inch edger to 36-inch power mower capacity. 4. Handle, wheels, roller and motor remain in place when sharpening is in process. 5. Bed knife is sharpened in same brackets that hold mower in grinding position. 6. No extra attachments required. 7. One lever puts mower or bed knife in grinding position. 8. 100% steel construction. 9. Grinding head rides on five sealed ball bearing races. 10. Small, compact, easy to operate. 11. Sharpens wood chisels, joiner knife and planer blades without extra attachments. 12. The Modern Lawn Mower Sharpener pays for itself in a matter of months.

PRICE \$241.50 (less motor)

1/3 H.P. MOTORS — 60 CYCLE — \$21.50

Send for Free Bulletin No. 16A

MODERN MANUFACTURING COMPANY  
160 N. FAIR OAKS AVE. • PASADENA 1, CALIF.



chairmen who have troubles. . . Hallelujah, brother. . . Drop a dime on the drum and get saved.

Harry and Emma Cooper back from Hawaii on a brief trip. . . Sammy Schneider, River Oaks CC, Houston, Tex., pro, says amateur Ed White would have been in class with Nelson and Hogan if he'd made golf his business. . . Byron Nelson in line for Warner Brothers picture. . . Jimmy Demaret to do a book on his merry career as a golf headliner. . . Add to the yammering about Locke not being allowed to play in the PGA championship. . . American pros before they can play in any British money event except the British Open, must have British PGA membership cards. . . The cards cost about \$10. . . U. S. PGA admission costs about \$45. . . With U.S. PGA championship requiring about 10 days for practice and play into the finals for 1st prize of \$3,500 and runner-up money of \$2,000 a fellow like Locke could make as much money on exhibitions as he could in PGA championship competition. . . With other stars tied up at PGA, exhibition dates are easy to get at that time. . . PGA winner gets his prize money doubled by manufacturer whose clubs he plays. . . Winner also gets \$250 for each appearance at

## John BEAN GOLF SPRAYERS



**JOHN BEAN SPRAY BOOMS** are ideal for spraying turf chemicals. Separate feed lines deliver equalized amounts of material to the right, left and center boom. Boom wings fold back to avoid obstacles, or for traveling and drag markers indicate areas that have been sprayed.

### GIVE THOROUGH COVERAGE FASTER

When you equip with John Bean sprayers and special 20 nozzle weed booms, ridding fairways, roughs, greens and fences of weeds is a fast, easy, one-man job. The John Bean weed boom delivers a coarse driving spray with a minimum of "drift," in controlled volume for your own spraying practice. John Bean sprayers are sturdy and reliable and are available in an output range of 4 to 60 gallons per minute. Write for the name of your nearby John Bean Dealer.

### JOHN BEAN

DIVISION OF FOOD MACHINERY CORPORATION  
LANSING 4, MICHIGAN



### COMPLETE RANGE OF TYPES AND CAPACITIES TO FIT YOUR NEEDS

**TRUCK MOUNTED OR POWER TAKE-OFF.** Your choice of engine powered or power take-off models to suit your needs and equipment.

**BIG OUTPUT RANGE.** John Bean sprayers deliver from 4 to 60 gallons per minute at 10 to 800 pounds pressure, depending on the model selected.

**FIRE PROTECTION.** For emergency control of grass or building fires, John Bean high pressure sprayers are ideal stand-by units.



**CALO-CLOR**,\* applied wet or dry, controls large and small brown patch . . . snow mold . . . earthworms in hard-to-replace turf. Calo-Clor is fast . . . sure . . . economical. Only one to three ounces per thousand square feet is required to keep greens and fairways in perfect playing condition. Specify Calo-Clor Regular for dry application, or Calo-Clor Suspension for use in sprayers.

See your dealer or write us today for full information about Calo-Clor and other Mallinckrodt greenkeeper's aids.

\*Trade Mark



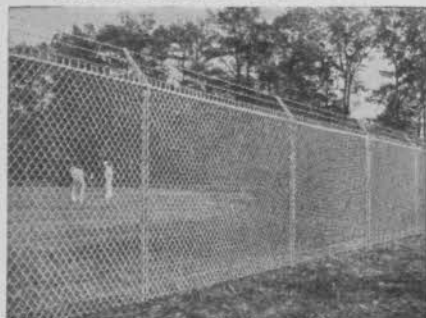
## MALLINCKRODT CHEMICAL WORKS

Mallinckrodt St., St. Louis 7, Mo. / 72 Gold St., New York 8, N. Y.

CHICAGO / CINCINNATI / CLEVELAND / LOS ANGELES / MONTREAL / PHILADELPHIA / SAN FRANCISCO  
Manufacturers of Medicinal, Photographic, Analytical, and Industrial Fine Chemicals

# PAGE -Since 1883 FENCE

• AMERICA'S FIRST WIRE FENCE •



## Choose the Right Fence

• The right fence for you is made by PAGE, pioneer maker of Chain Link Fence. It can be the one of several styles which is best suited to your needs, and it can be had in a choice of metals. Our nearby Association member will confer with you on the fence you need and submit cost estimates without obligation. Write for illustrated information and we will send his name. Address PAGE FENCE ASSOCIATION, Headquarters: Monessen, Pennsylvania.

A PRODUCT OF PAGE STEEL & WIRE DIVISION  
AMERICAN CHAIN & CABLE • BRIDGEPORT, CONN.

tournament clinics and top crack at some exhibition dates. . . The title should be worth about \$18,000 gross.

Harry Hillhouse named mgr., Delphi (Ind.) CC. . . Mme. Didrikson Zaharias trying to fit in Women's Western Open at Skycrest CC (Chicago dist.) June 21-26 between exhibition dates. . . The Babe could use the WW title as gallery magnetism. . . Frankfort (Ky.) CC building new clubhouse. . . Indian Hill CC (Chicago dist.) has one wing of clubhouse burned in \$100,000 fire.

Central Michigan GA to hold its first junior golf championship at Portland CC. . . Work started on new Emmetsburg (Ia.) CC clubhouse. . . Pella (Ia.) CC building new clubhouse. . . Jack Swink pres., new Montezuma (Ia.) CC. . . More than 50 Open and Invitation tournaments scheduled in Texas this year. . . Texas GA pres., Ben Lee Boynton, says about the state's golf, "Club memberships are increasing everywhere and fortunes are being spent this year on club improvements."

Most persistent malapropism in golf is use of "invitational". . . You won't find "invitational" in the dictionary any more than you'll find "openal" or "amateural".



Model "K"  
3-6 cu. yds. hr.  
Sugar Creek  
Golf Club



# "Qualify"

## YOUR FAIRWAYS with a Royer Compost SHREDDER-MIXER

Put your course in shape to qualify for "Big Time" play by building up a rich, heavy turf on fairway and green with Royerated compost. A Royer shreds and blends even textured, pea size compost . . . eliminating trash and discharging aerated mixture into convenient piles. Maximum fermentation and moisture retention. Big saving in labor. Write for Bulletin 46.



PIONEER  
BUILDERS  
OF  
COMPOST  
SHREDDERS

## ROYER FOUNDRY & MACHINE CO.

171 PRINGLE ST., KINGSTON, PA.

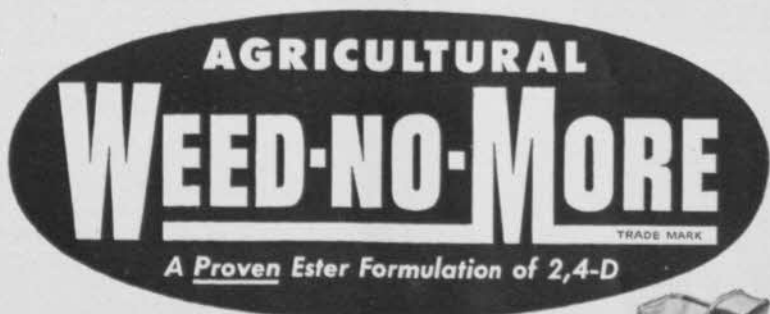


**NOW YOU CAN HAVE**

# Weed-Free Turf

*at far less cost than former weed-eradication methods*

**USE ONLY 1 TO 2 PINTS PER ACRE OF**



**Highly Effective!** Authorities have found that the ester forms of 2,4-D used in Agricultural Weed-No-More penetrate weed leaves within 5 minutes or less, then begin to work instantly.

**Saves Time and Money!** Using the new Weed-No-More spraying method developed and proved by Sherwin-Williams Research, one man can spray as many as 100 acres in a single day. The use of Weed-No-More results in beautiful, weed-free turf.



**Easy to Apply!** Agricultural Weed-No-More is effectively applied with a simple, low-cost spray attachment quickly assembled and mounted on tractor, Jeep, or truck. Pump can be driven by power take-off or small gas engine. Hand sprayers can be used for small areas. One to 2 pints of Weed-No-More in only 5 gallons or less of water per acre kills dandelion, plantains, buckhorn, and other turf weeds.

For full information phone your supply dealer or write direct to Agricultural Chemicals Division, 1231 Midland Building, Cleveland 1, Ohio.



**New Movie Tells All.** Committees and boards should see the new full-color, 16mm sound film "Agriculture's New Conquest." It tells the full story of weed control with 2,4-D on farms and large turf areas. See your dealer or write direct to Agricultural Chemicals Division, 1231 Midland Bldg., Cleveland 1, Ohio.

Acme White Lead & Color Works, Detroit  
W. W. Lawrence & Co., Pittsburgh  
The Lowe Brothers Co., Dayton  
John Lucas & Co., Inc., Philadelphia  
The Martin-Senour Co., Chicago  
The Sherwin-Williams Co., Cleveland

**PRODUCT OF SHERWIN-WILLIAMS RESEARCH**

# No Need to Weed

## With **DOLGE WEED-KILLER** on the job!

Use where no vegetation whatever is desired.

Penetrates to the roots, destroying the plants completely.

Sterilizes the soil and prevents seed from sprouting.

### E. W. T. SELECTIVE WEED-KILLER

NOT INJURIOUS to most grasses, but acts on weeds *effectively*.

DOES NOT STERILIZE most soils.

RIDS turf areas of dandelions, plantains and other hardy weeds... perfect for ragweed and poison-ivy control.

#### GET ALL THE FACTS!

Write for DOLGE'S brand-new booklet

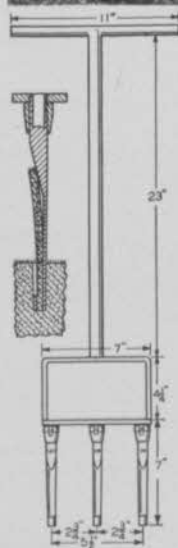
"CHEMICAL WEED CONTROL"  
—complete, up-to-date information for dealing with your weed problems swiftly, economically, lastingly.

**The C. B. DOLGE CO.**  
WESTPORT, CONNECTICUT

... "Invitational" seems to have been something committees have picked up from the lexicon of Father Divine. . . And, by the way, "caddy" is given dictionary approval in the new American College dictionary. . . The American dictionary definition of "caddy" is "caddie." . . . So it looks like the Western Golf Assn. is fighting a losing fight to have caddie maintained as proper spelling. . . We give up. . . After this caddie is caddy on GOLFDOM'S style sheet. . . Such as the style sheet is.

A soil stimulant that's radioactive is being tested by the U.S. Dept. of Agriculture for the Atomic Energy Commission. . . Some tests are to be made on grass. . . Craig Wood is interested in a company which is investigating possibilities of the radioactive material on turf. . . It isn't a fertilizer but according to indications of early tests promotes plant response to nutritive elements.

Chicago Tribune's 16th annual free golf school held at Chicago parks had record attendance this year despite rain. . . Guymon, Okla. opens new munny course. . . Monte Vista (Colo.) CC gets lively newspaper publicity on its "youth recreation" program. . . Milton (Buster) Brown now



## JUSTICE PLUG EJECTOR

The perfect tining tool. You may now add your soil conditioners without compacting the greens; unbelievable speed at low cost.

Promotes root development, internal drainage, soil improvement and aeration.

Sold through distributors only. Distributors solicited.

Sales Agency

**DAVE W. JUSTICE**  
501 S. W. 44th St.  
Oklahoma City, Okla.

Improve old greens without rebuilding.