

# FOR A WINNING PUTT . . .

The New

Rite-Arc

## DROP IN PUTTER

PRECISION-MACHINED

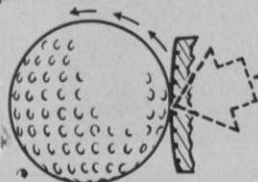
GIVES BALL NATURAL OVERSPIN

PENDULUM-BALANCED  
TIME-TESTED

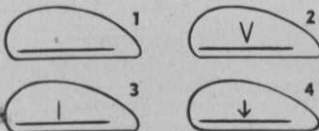
FEEL AND TOUCH AT  
ONCE NOTICED WITH  
RITE-ARC . . . A MUST  
FOR BETTER PUTTING

### CURVED FACE

The secret of distance control lies in the correct curve on the face of the putter.



### 4 MODELS TO CHOOSE FROM



COMPLETELY NEW BLADE-TYPE PUTTER.  
INCORPORATING THE RITE-ARC PRINCIPLE  
ALSO AVAILABLE

RITE-ARC starts ball rolling smoothly with overspin from instant of impact, guaranteeing perfect direction towards hole.

The ball does not slide first and then roll, as is often the case with ordinary straight face putters with no overspin. The overspin holds the ball to the direct line of the measured putt, with a much better chance of the ball dropping into the hole instead of rimming the cup.

For particulars see your pro or local dealer. If he has none on hand, order direct.

# GENERAL MACHINE CO.

1825 WEST ST. PAUL AVENUE

WEST 4250

MILWAUKEE 3, WIS.



Troy has attractive ads on corner seats for street car and bus waiting patrons.

he features "pro only" merchandise in his ads and in no case does he cut prices on standard-priced golf merchandise.

He shows a lot of them, stores and pros, how to sell in big volume. He does pros considerable good by accenting their value to the player in his ads. For instance, one of his display ads in the Calumet Index reads:

#### OUR BUSINESS IS GOLF

*If you are in need of golf equipment buy direct from a golf professional. He will take a personal interest in seeing that you are fitted properly. There is no charge for his professional advice.*

*He will suggest only the clubs you'll need, for his primary interest is improving your game. If you do not have a certified golf professional visit our pro shop.*

*Our professionals will be happy to discuss your game with you.*

*Lessons Now Going On—Take Some!  
They'll Improve Your Game!*

**"THE PRO SHOP"**  
**SHELDON HEIGHTS**  
**GOLF CLINIC**

*"Where Honest Values Make Friends"*

#### Lesson Books Draw

He gets heavy traffic into his shop. One of the attractions that bring people in is his advertising of the National Golf Foundation's "Golf Fundamentals" booklet which is given free to the visitors. That's brought him an army of people who come to get something free that they want and then look around in the shop and buy something else they want.

He has on the books signature of Sheldon Heights Golf clinic and his own name and that of Sandy Pettigrew as pros.

There is clever merchandising even in the scorecard of the miniature course at the place.

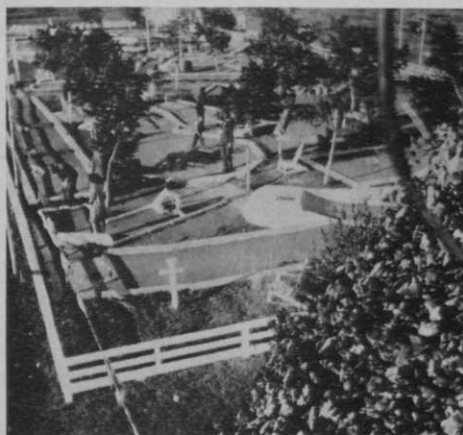
A big business in repairing of clubs is done at the Sheldon Heights establishment. Troy and Pettigrew don't shove merchandise at their patrons. They are interested first in the people playing golf with whatever they may happen to have, or at the range using the Sheldon Heights equipment.

#### Player Improvement Needed

Troy declares that one of the weak spots in golf as a business is that so many players are no better today than they were 10 years ago. Of course he knows the indifference and lack of time of the player that are responsible for this condition but he says it's the main challenge to professional golfers at clubs today.

He is certain that the golf ranges, properly staffed, are going to do a lot to correct this condition, thus increase the amount of golf play.

He gets plenty of private club members at his place so is in position to appraise

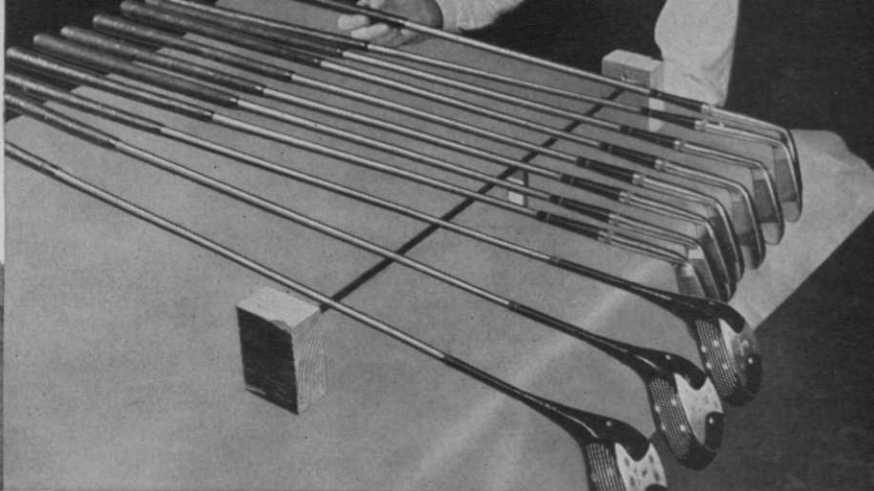


Troy's putting course is heavily patronized day and night.

the pro situation from a detached perspective. He thinks that next to the failure to emphasize the lessons at clubs there is the failure to properly impress upon members that golf is such an individualistic game that careful expert advice in selecting clubs actually should be one of the big benefits the member receives for his dues.

Part of the failure to impress these two points he blames on club officials but says that their guilt is secondary since the pro would get the big direct profit from the increased interest in the game that would come from greater proficiency as the result of lessons and proper clubs.

*(Continued on page 62)*



## Better Clubs for Better Shots

These Precision-Balanced BRISTOL Beauties Put a "Feel" of Confidence in Your Swing

How's your golf game going this season? Would better clubs help you improve it? Why not try these new precision-balanced BRISTOL CLUBS and see. Precision balancing gives these handsome BRISTOL woods and irons a "feel" of controlled power, a "feel" that does a lot to build your confidence for better scoring. BRISTOL, you know, was first to introduce and popularize the steel golf shaft. Today, in this year's

advanced-type models, BRISTOL makes further important contributions to the art of fine club making. Waggle these new BRISTOL CLUBS at your first opportunity. You'll thrill to their superb balance and playability and will want a set for your very own.

### High Accuracy of Balance a Big Feature of these BRISTOL Clubs

Exacting workmanship, close tolerances and high precision machines throughout every step of manufacture combine to produce an unusual nicety of balance in BRISTOL CLUBS. Not only has each club an exceptionally good "swing weight" balance of its own, but each is in excellent balance with respect to every other club in the set. The accompanying photograph is a graphic illustration of set-balance perfection. Note the even alignment of heads as the clubs are balanced across a rod. The more even the alignment of the club heads, the better the over-all set balance is shown to be. Try this test sometime yourself. Then remember that the careful balancing of BRISTOL CLUBS is one of the big reasons why they add so materially to your pleasure on tee and fairway.

★ Watch for impressive advertisements like that on this page which now regularly feature the precision-built superiority of BRISTOL'S fine new golf clubs before the 22,500,000 readers of America's leading pictorial weekly, LIFE.



Hit  
Better Shots  
with the  
NEW

**Bristol** GOLF CLUBS  
THE HORTON MANUFACTURING CO.  
BRISTOL, CONNECTICUT

BALLS, BAGS  
and  
ACCESSORIES

Also  
Makers of  
BRISTOL  
FISHING RO  
REELS, LIN

# Fertilizer and Lime Usage In Bent Green Care

By O. J. NOER

The principal fertilizer materials were enumerated and described briefly in June 1947 GOLFDOM. They can be used as such, singly or in combination; or they can be applied in commercial fertilizer mixtures. The manufacturer of mixed fertilizer uses these components in appropriate amounts to produce a mixture with a definite analysis. The resulting product is called a fertilizer grade. Each state has a list of approved grades and frowns upon the manufacture of any others. The approved grade of lawn and garden fertilizer is 4-12-4 in the mid-west, 5-10-5 for the East and 6-10-4 on the Pacific Coast. Each fertilizer manufacturer is permitted to make one additional grade of mixed specialty fertilizer of his own choosing.

Accepted practice is to show the percentage content of the 3 major constituents in the order of nitrogen, phosphorus and potassium. Nitrogen is expressed as such; in other words as the element. Phosphorus is given as the percent of phosphorus pent oxide ( $P_2O_5$ ) which is called phosphoric acid by the trade. Phosphorus pent oxide unites with water to form phosphoric acid, and with lime to make calcium phosphate. Superphosphate is a lime phosphate. The oxide of potassium ( $K_2O$ ) is called potash. A 4-12-4 fertilizer contains 4 percent nitrogen, 12 percent phosphoric acid and 4 percent potash. An 0-9-27 has no nitrogen, but contains 9 and 27 percent respectively of phosphoric acid and potash.

## Understanding the Mixture

Confusion in terminology can be avoided by remembering that phosphorus and potassium are the names for two chemical elements. The terms phosphoric acid and potash refer to chemical compounds which are combinations of the respective element with oxygen. When phosphoric acid and lime (or any other metallic oxide) combine a phosphate is formed.

Expressing the percentage content of phosphorus and potassium in a fertilizer as phosphoric acid and potash is confusing and misleading in one sense. A 4-12-4 fertilizer has 5.2 percent phosphorus and 3.2 percent potassium and would be a 4-5-3 roughly expressing the constituents as chemical elements. Since the figures 12 and 4 for the oxides are larger the customer may think he gets more for his money. Actually both figures 12% phosphoric acid

or 5.2 percent phosphorus, and 4 percent potash or 3.2 percent potassium represent the same quantity of plant food. There is nothing wrong with either method so long as the fertilizer meets or exceeds the guarantee, and the buyer understands the difference between the terms phosphoric acid and phosphorus, or potash and potassium.

Until a few years ago the nitrogen guarantee was expressed, "nitrogen as ammonia." A fertilizer guaranteed to contain 5 percent "nitrogen as ammonia," and one guaranteeing 4.1 percent nitrogen contain the same amount of nitrogen. The old guarantee might lead the customer to believe he was buying more plant food. There was and is a more serious objection to the old phrase. The statement "nitrogen as ammonia" might be interpreted to mean that all the nitrogen in the fertilizer was from materials containing that kind of nitrogen whereas the fertilizer might have several forms such as natural organics, nitrates, cyanamid, urea, etc. The change from ammonia to nitrogen was a forward step.

## Difference Between Grade and Formula

The chemical analysis, or grade, expresses the percentage content of essential plant food elements. The formula enumerates the ingredients and the exact amounts of each used to produce a ton of that grade fertilizer. Occasionally the manufacturer reveals this information. The expression "open formula" designates this practice.

Mixed fertilizers are very similar with respect to the source of phosphoric acid and potash. The principal variation is in the source and kind of nitrogen. All the potash is derived from muriate of potash, excepting a few grades made for special crops. Sulfate of potash is used in them. Superphosphate is the principal source of phosphoric acid. It varies in analysis from 16 to 45 percent. Ammonium phosphate is another source which furnishes nitrogen and phosphoric acid. Bone meal was used in the past but is seldom found except in an occasional specialty fertilizer.

Mixed fertilizers differ principally in the kind of nitrogen they contain. In a few mixtures all the nitrogen is derived from sulfate of ammonia, in others it may be a combination of sources. Some contain only water soluble nitrogen derived from sulfate



# KADDIE KART PRODUCTS

MANUFACTURED BY KADDIE KART MFG. CO.

AND ITS AFFILIATED COMPANIES

GOLF CART SUPPLY SERVICE and CHAMBERLIN METAL PRODUCTS

1466 W. MADISON ST.

SECOND FLOOR

CHICAGO 7, ILL.



SELL TO PLAYERS



RETAIL \$29.50  
PRICE

**SPECIAL OFFER TO  
PROS AND CLUB  
BUYERS**

Send \$39.00 for 2 KO-LAP-SI KARTS to be sent express prepaid as a trial order. Your profit \$20.00 net. Six Kolapsi Karts \$106.20, F. O. B. Chicago.

*Immediate Delivery.*

PATENTS PENDING

KO-LAP-SI KART is a quality Kart. Quality, not only in materials used, but quality in performance. It has greater eye appeal. And it looks like double value. It is double value.

## AUTOMATIC GOLF CART

### THE HANDLE DOES THE WORK

1. DROP THE HANDLE—It folds and locks.
2. LIFT THE HANDLE—It unfolds and locks.
3. STAND ERECT EITHER CLOSED OR OPEN. Can be stored where space is valuable in Pro shops, closets, etc.
4. Large 14 inch wheels. Special sealed ball bearings, factory grease packed. Easiest rolling Kart ever made.
5. Compensated shock absorbing, floating wheel assembly, and Flexible Body Torsion—eliminates jars and jolts.

—PATENTED—



THE RENTAL KART



**BUY  
DIRECT  
FROM  
FACTORY**

**NO  
MIDDLE  
MAN**

The most sought after Kart in America. IMMEDIATE DELIVERY.

Kaddie Kart is the sign of quality and distinction. It has large 14 inch wheels, ball bearings, single natural position handle. Demountable axle, handle and frame.

Two axle widths; 22½" and 28½"

NEW LOW PRICES — ORDER NOW

## GOLF CART SUPPLY — CHAMBERLIN METAL PRODUCTS

1466 W. Madison Street, 2nd floor, Chicago 7, Illinois

Gentlemen:

Please ship ..... Kolapsi Karts. Enclose \$..... Please send information and prices about

Kaddie Kart for rental or  Kolapsi Karts for resale.

Name..... Club.....

Address..... Town..... State.....

Remarks.....

# PERFECT GRASS

## AT LOWEST UPKEEP COST



Mixtures carefully blended to your specifications or our special formulas for varying conditions of soil, climate and use.

### STRAIGHT GRASSES • BENTS

High germination and purity.

TELL US YOUR PROBLEM

## ASGROW SEEDS

Main Office: New Haven 2, Conn.



for the  
**RIGHT  
APPROACH**

to your problem of brown-patch choose Mallinckrodt Calo-Clor\*. Calo-Clor is the "just right" chemical to be used as a preventive and as a remedy when turf disease strikes. Calo-Clor Regular for dry application. Calo-Clor Suspension for use in Sprayers.

Write for informational literature.

\*T. M. Reg. U. S. Pat. Off.

<b>MALLINCKRODT</b> 80 Years of Service		<b>CHEMICAL WORKS</b> to Chemical Users
Mallinckrodt St., St. Louis 7, Mo.		72 Gold St., New York 8, N. Y.
CHICAGO • PHILADELPHIA		LOS ANGELES • MONTREAL
UNIFORM • DEFENDABLE • PURE		

of ammonia, cyanamid, urea, nitrate of soda, or ammonium nitrate. In others part or all of the nitrogen is water insoluble derived from natural organics such as cotton seed meal, castor pomace, processed leather, etc.

Most turf authorities favor mixtures with one-third to one-half of the nitrogen from these organic sources and the balance principally from inorganic sources, preferably with a large part in the form of ammonia. Most fertilizer manufacturers reveal the amount of water insoluble nitrogen in the mixture. This information is required as a part of the guarantee by some states.

The term units of plant food is frequently used. A unit is 20 pounds. A ton of 5-10-5 fertilizer contains 5 units of nitrogen, 10 units phosphoric acid and 5 units potash, or a total of 20 units. Some states require a minimum of 16 to 20 units of plant food in any grade of mixed fertilizer sold in the state. This provision does not apply to fertilizer materials such as nitrate of soda, or the vegetable meals and the animal tankages.

Sometimes cost per unit of plant food is used to compare the relative value of fertilizers. The method may be fair when the ratio and kind of plant food is the same. A 4-12-4 has 20 units of plant food. The ratio is 1-3-1. A 5-15-5 has the same 1-3-1 ratio but contains 25 units of plant food. A 4-12-4 priced at \$40 per ton costs \$2 per unit. A 5-15-5 costing \$47.50 is more expensive per ton, but the cost per unit is a trifle less, \$1.90 per unit.

### Misleading Comparison

A similar comparison of a 10-6-4 with a 4-12-4 would be misleading. Both have the same number of units (20 in each case). The ratios are 5-3-2 and 1-3-1 respectively. The 10-6-4 would be more expensive per ton and per unit because of its higher content of nitrogen which is the most expensive ingredient in mixed fertilizer. When used before seeding to grass, and applied at the same rate per acre in a soil with a very low content of available phosphorus the 4-12-4 fertilizer would be the best choice. On a soil with plenty of phosphorus, but deficient in nitrogen, the 10-6-4 would be preferable. Choice based on comparative cost per unit would be beside the point.

Two fertilizers of the same grade may vary in value, in price per ton, and in cost per unit. A 5-10-5 supplemented with trace elements costs more than one without them. The additional expense is justified when trace elements are needed to eliminate a soil deficiency.

A 10-6-4 with 5 units of organic nitrogen from a high quality vegetable meal or tank-

age costs more than one of the same analysis with all the nitrogen from sulfate of ammonia. Water insoluble organic nitrogen is higher priced than water soluble forms derived from inorganic sources.

A price comparison between a natural organic and an inorganic nitrogen fertilizer is always in favor of the inorganic. Both have their place in the turf fertilizer program. Comparisons based on cost per unit should be confined to members within each class; namely cotton seed meal vs. Milorganite, sulfate of ammonia vs. ammonium nitrate, etc.

Some state laws require manufacturers to state on the guarantee whether the fertilizer is acid or non-acid forming. Potential acidity of a fertilizer is expressed as the amount of lime required to neutralize its acid producing components. This is called the calcium carbonate equivalent. Many fertilizer manufacturers make neutral fertilizers by adding enough dolomitic limestone to the mixture to neutralize the potential acidity.

#### **Fertilizer Mechanical Condition**

The mechanical condition of a fertilizer is important. It should not become lumpy or harden during storage. Manufacturers of mixed fertilizer usually add a little cyanamid, and some good quality organic conditioner to the mixture. The use of well cured superphosphate is another aid. The problem of keeping sulfate of ammonia granular has been solved by neutralizing and pan drying it. The ordinary commercial grade of sulfate becomes hard as a rock in a short time. This can be prevented by mixing 1 part vegetable meal or Milorganite to 3 or 4 parts sulfate. Then it will stay granular indefinitely.

#### **Bent Fertilizer Program**

The fertilizer program for greens of bent grass must furnish enough of all the nutrients needed by the grass. The amounts of the major plant food elements removed in the clippings should serve as a rough guide. This information was given in last month's **GOLFDOM**.

After furnishing ample phosphoric acid and potash the problem is one of providing the correct amount of nitrogen. It is the growth promoting element. Enough should be used to develop a dense weed- and clover-free turf of desirable texture for play.

Excessive amounts which make the turf coarse and the grass soft and lush should be avoided at all times but especially immediately before and during hot wet weather. The tendency at some courses has been to be too frugal with nitrogen especially where topdressing has been reduced sharply in amount and frequency. This has favored clover and aggravated

dollar spot because susceptibility to this disease is caused by too little as well as too much nitrogen.

When the topdressing does not contain manure compost need for nitrogen is accentuated and the possible necessity for more potash cannot be ignored. Clover will not increase provided the grass receives square meals of nitrogen. In the days when manure compost was used generously in the topdressing greens got more potash than now. Clover was not too hard to control. It was then and is now a matter of keeping a mat of dense tight turf.

The fertilizer program can be built around commercial mixed fertilizer, supplemented with nitrogen as needed; or phosphate and potash can be applied in spring and fall and nitrogen used as needed. Either way will give good results.

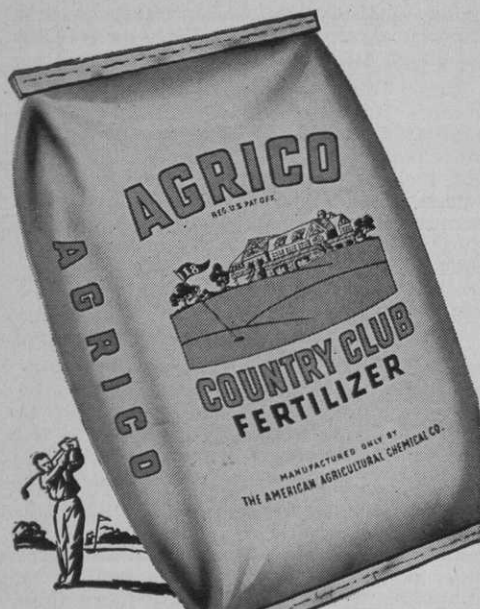
A program which furnishes during the season in the topdressing and fertilizer 5 to 6 pounds phosphoric acid, and 8 to 10 pounds potash per 1000 square feet provides double the quantity removed in the clippings. These amounts are more than enough to feed the grass, and offset losses from fixation or leaching on soils which have a satisfactory level of both elements when the program starts. The above quantities of plant food are contained in 25 to 30 pounds of 20 percent grade superphosphate, and 13 to 17 pounds of 60 percent grade muriate of potash. A half bag or 50 pounds of 0-10-20 contains 5 pounds of phosphoric acid and 10 pounds potash.

#### **Bent Green Nitrogen Feeding**

Bent greens should get from 1 to 1½ pounds of nitrogen per 1000 sq. ft. per month. This is equivalent to 5-6 pounds sulfate of ammonia, or 18 to 20 pounds of cotton seed meal or Milorganite. In the Northern belt where dollar spot is the principal disease the nitrogen should be applied in approximately equal doses throughout the season.

Organics such as cotton seed meal or Milorganite can be applied once a month at about 20 pounds, sulfate of ammonia at about 5 pounds. When mixed fertilizer is used in addition, the rates for the nitrogenous fertilizer should be reduced so the total amount applied from both sources is not over 1 to 1½ pounds per month. The organics can be applied in one application but the sulfate should be applied in two or three doses spaced 10 to 15 days apart at 1½ to 2½ pounds per 1000 square feet each time. Farther south where brown patch is prevalent in midsummer, spring and fall rates for nitrogen should be increased and midsummer rates reduced accordingly.

For those who prefer commercial mixtures the old 10-6-4, 8-6-4, 8-6-2, etc., grades are still satisfactory on greens



# AGRICO

AMERICA'S NO. ONE GOLF-COURSE FERTILIZER

Order Agrico now—ask your regular source of supply, phone nearest A.A.C. Sales Office, or write to The American Agricultural Chemical Co., 50 Church Street, New York 7, N. Y.

*Greenkeepers depend on*

## GANDY FERTILIZER DISTRIBUTORS

*for accurate, wasteless  
SEEDING and FERTILIZING*



• Uniform fertilizer application. • Ideal for seeding of grass seeds. • Patented easy clean up features.

3 Models: 3 ft. and 5 ft. width hand models; 10 ft. width power model.

**E. S. GANDRUD CO.**

Box 447G, OWATONNA, MINNESOTA

which are topdressed fairly frequent. A 5-10-5 or 4-12-4 can be used provided they are supplemented with nitrogen as needed. A 1-1-1 ratio, such as 8-8-8 or possibly a 2-1-2 ratio would be better on greens that are not topdressed more than once or twice a year with a mixture devoid of manure compost.

Another satisfactory plan is to use straight superphosphate and muriate of potash in spring and fall at rates which provide about 3 pounds phosphoric acid and 5 pounds potash each time or to apply an 0-10-20 or 0-20-20 at 30 pounds per 1000 in early spring and 20 pounds in August or early September. Then to use nitrogen as needed, applying cotton seed meal or Milorganite alone or in combination with sulfate, urea or ammonium nitrate. The organics are desirable to supply longer lasting nitrogen.

### Application of Soluble Fertilizers

Soluble fertilizers, either as fertilizer material or as a commercial mixture may scorch the grass. They should be watered-in promptly to prevent discoloration of the grass, and should not be applied when there is dew on the turf, or when soil is so wet that moisture shows in foot prints. Too heavy rates will burn despite watering. Scorching is most likely in hot weather, and when the grass is succulent.

The use of lime on fairways and greens was discussed fully in 1946 issues of GOLF-DOM. Those desiring detailed information should consult these articles. A summary of the present status of lime usage on bent grass greens is all that is justified here.

Aside from any direct adverse effect on growth, too much acidity weakens the grass plant, and restricts the root system. The grass is less able to withstand drought or cope with hot humid weather. It is more liable to injury from disease and chemical treatments.

The use of lime is justified on bent grass greens when soil reaction is below pH 6.0. A finely ground limestone is the safest and easiest form to use. One of high magnesium content, called a dolomite, should be used when a soil test shows low available magnesium (500 pounds or less, by the Hellige Truog Method). Suggested rates are as follows, for finely ground limestone:

### RATES FOR APPLYING FINELY GROUND LIMESTONE TO GREENS

Soil Reaction	Limestone Rates	
	Pounds per 1000 Sq. Ft.	
6.6 to 7.0 pH	0	
6.1 to 6.5	0-10	pounds.
5.6 to 6.0	10-20	"
5.1 to 5.5	20-40	"
4.6 to 5.0	40-60	"
4.0 to 4.5	60-80	"



### Care In Applying Lime

Ground limestone can be used at any time but is applied generally in early spring or during the fall. Hydrated lime must not be applied at more than 20 pounds per 1000 square feet at any time and in hot weather more than 2 to 5 pounds per 1000 sq. ft. may scorch the grass.

Lime, especially hydrate, must not be used immediately before or right after an application of fertilizer containing nitrogen in the form of ammonia. Bad burning of the turf will result and loss of nitrogen may occur.

The soil on a new green should be tested for reaction before seeding or planting stolons. Ground limestone should be applied at rates recommended above and worked into the soil. The application should be made as long as possible before seeding or planting.

A light application of hydrated lime, 2 to 5 pounds per 1000 square feet, is justified when a green becomes scalded during hot wet weather. The hydrate is used to kill algae and to counteract toxic organic compounds produced in water-logged soil. The application is made irrespective of soil reaction. Hydrate must be used because of its greater solubility rather than ground limestone. When the bad spell of weather persists for several weeks, turf responds to weekly doses of hydrate at not to exceed 2 pounds per 1000 square feet. It can be mixed with sand for bulk and broadcast over the green, or it can be applied with a power sprayer using a minimum amount of water.

**HELP FOR YOU...**  
direct from the firing  
line of experience in  
golf management . . .  
in each issue of **GOLFDOM.**

### PGA 1948 CHAMPIONSHIP TO ST. LOUIS

Bid of Fred Dowd for PGA 1948 championship at St. Louis has been accepted by pro association executive committee. Date and site as yet are not officially announced but probability is that the event will be played at Norwood Hills CC, Normandy, Mo., a northwestern suburb. Official announcement of the championship deal being completed was made in passing up a belated bid by Columbus, O. for the 1948 PGA event. Columbus was promised consideration for the 1949 PGA championship.

Whether or not Ryder Cup matches will be played in the U. S. this winter remains to be decided. It will cost more than \$20,000 to bring the British team over. Fall

August, 1947

## A New, Better Cultivator **GREEN DRAGON**

Opens up and aerates packed areas — Makes top-dressing and fertilizer accessible to root bed — removes grain — easy to operate without interference to turf surface.

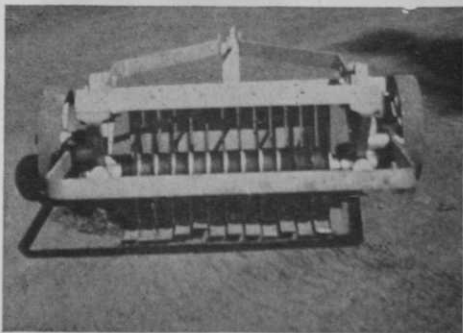


Illustration shows cultivating position. Weights on tray over axle regulate depth of cut. Circular knives made of fine knife steel. A real machine.

Write for price and literature.

Manufactured by **FRED BUEL, Woburn, Mass.**

## FINE SEED FOR FINE TURF

IT PAYS TO GET THE BEST

WE SPECIALIZE IN GOLF TURF

## GRASS SEED

SELECT VARIETIES — MIXTURES

KENTUCKY BLUE GRASS

CHEWINGS FESCUE	FANCY RED TOP
ASTORIA BENT	PERENNIAL RYE GRASS
SEASIDE BENT	DOMESTIC RYE GRASS
WHITE CLOVER	ORCHARD GRASS

FINE GOLF TURF SEED WILL BE  
SCARCE

Plan your needs now. Ask for Prices

**J. OLIVER JOHNSON SEED CO.**

946-960 W. HURON STREET

CHICAGO 22, ILL.

Phone: Monroe 6580

# IS SKIN BETWEEN TOES—CRACKED ITCHY, PEELING?

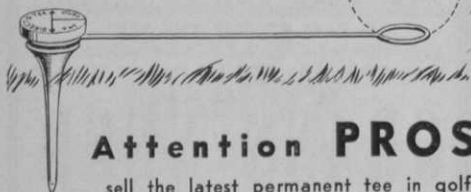
Watch out  
for  
Athlete's  
Foot!



Don't delay—apply Zemo—a Doctor's fast acting agent—so wonderfully soothing yet so powerfully effective that first applications promptly relieve itching soreness and aid healing. Zemo actually kills on contact germs that commonly cause and spread Athlete's Foot. It helps guard against reinfection. That's why Zemo has such an amazing record of continuous success! First trial convinces. Buy

at any drugstore. **ZEMO**

## SENSATIONAL NEW TEE IN GOLF DIRECT-O-TEE



### Attention PROS

sell the latest permanent tee in golf, easy now to keep the ball on the fairway and improve your members' scores.

RETAIL PRICE \$1.00 each

Send for your free sample

**SPECIAL INTRODUCTORY OFFER TO PROS**

\$6.00 per dozen your profit \$6.00

----- MAIL COUPON TODAY -----

Direct-O-Tee Inc.  
2545 Cropsey Ave.  
Brooklyn 14, N. Y.

Send me \_\_\_\_\_ Dozen tees @ \$6.00 per dozen.

Name \_\_\_\_\_ Address \_\_\_\_\_

City \_\_\_\_\_ Zone \_\_\_\_\_ State \_\_\_\_\_

Club \_\_\_\_\_

Check or money order enclosed.  C. O. D.

Money back if not satisfied.

date is out because of conflict with football for publicity and gate and a winter circuit city hasn't yet shown keen interest in guaranteeing amount needed for the two day event. Ryder Cup event this year will find Ferrier, PGA of America champion, not qualified for a place on the American team due to his Australian birth.

British players hope the event can be set as they'd like American winter circuit climate, rations and any prize money Locke happens to miss. And who could blame them for that?

### 2, 4-D SPOT-TREATING GREENS

Clarence Strouse of Highland GC, Grand Rapids, Mich., was faced with the problem of rehabilitating greens which had been neglected during the war. He did not tear them up and reseed or plant with stolons. Strouse brought them back by raking, fertilizing, and topdressing. They were in fair playing condition soon after the season opened, and were surprisingly good by the end of the season.

Some dandelion and plantain were scattered over the greens. It was decided to spot treat, rather than spray the entire green with 2, 4-D and chance the possibility of damaging the bent grass.

The ordinary knapsack sprayer was rejected for spot treatments because the spray covered too large an area, even when



Shure-Shot Sprayer

the nozzle was held close to the weed. A "Shure-Shot Sprayer," made by the Milwaukee Sprayer Mfg. Co., was used instead. The nozzle which squirts a straight stream was attached to the sprayer.

The stock solution was made by dissolving a heaping tablespoon of the dry sodium salt (70 per cent 2, 4-D equivalent).