

WHY TREAT FAIRWAYS IN THE FALL?



GRUB DAMAGE IS OFTEN GREATEST in the fall. And fewer golfers are on the course. So it's a good time, before the ground freezes, to apply lead arsenate — to arrest further damage and protect against future infestation.

In some regions, fall application of lead arsenate will do double duty — it not only controls grubs and earthworms, but *it also controls crab grass and chickweed!*

Grasselli Lead Arsenate is effective and easy to apply. It can be used dry as a dust or in water as a spray. See your golf supply dealer or write us direct.

Send For Free Folder, "Grub Control With Lead Arsenate"

E. I. DU PONT DE NEMOURS & CO. (INC.)
GRASSELLI CHEMICALS DEPARTMENT
WILMINGTON, DELAWARE



GRASSELLI LEAD ARSENALE

Gulf of Mexico masses are the main contributors toward East America's precipitation as Canadian masses are, because of their low temperature, unable to contain much water vapor, and as Pacific masses lose theirs on the weather side of the Rocky Mountains where they are compelled to climb their slopes. Air mass classes are on a much more gigantic scale in America than in the Old World. There are no West-East running mountain barriers in this country blocking the quick advance of subpolar cold and dry masses traveling southward from Canada or of subtropical warm and damp masses traveling northward from the Gulf of Mexico. As a result terrific storms develop even in the innermost parts of America, while in other continents, plains far from the oceans are mostly characterized by only slight winds. The 80 American tornadoes per annum and the wind-

mills in the very heart of the continent are unique phenomena.

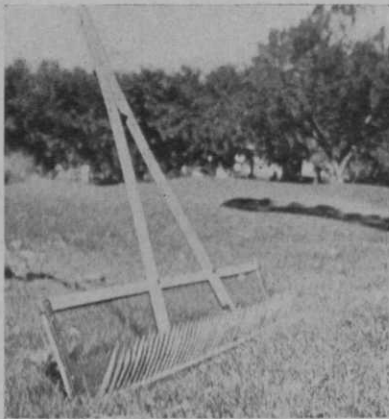
Local weather is explainable only as a part of atmospheric developments of huge dimensions. Scientific forecasts are based upon material covering the entire continent, both oceans and the upper strata. As such information is only available to official networks laymen mostly acquiesce in listening to radio forecasts. The convenience of this public service includes a danger which lies neither in the interest of educated listeners nor in that of meteorology. The public simply accepts the forecast, neither knowing its scientific basis nor wanting to know it.

Undiscussed fact forecasts do not deepen the understanding of atmospheric phenomena and leave the listeners completely helpless in more difficult cases, when the approaches of disturbances occur quicker or slower than assumed by the

SOLICIT MEMBERS EARLY FOR XMAS GIFT BUSINESS

Already forward-looking pros are planning drives for Christmas gift business. Balls in gift packages, clubs and accessories are to be presented in special advertising pros will send out to members at the start of the Christmas shopping season.

From past experience in getting corporation business in golf Christmas gifts, pros have learned this trade should be solicited early in November.



This leaf rake has cut time, effort and costs at the Denver (Colo.) CC. Jim Haines, Denver CC supt., invented it, and it's made in the club shop. Jim's had so many requests for construction information on it he is planning to get blueprints and specifications made to sell to greenkeepers who want to make these rakes for their own courses.

forecaster. The aim ought to be to promote the understanding of the reasons upon which forecasts are based by tuning in to officially discussed forecasts (in the East to WOR at 6:55 A.M.) and by using weather maps. By doing so the local sky will be much more correctly interpreted and the safety of personal forecasts will be basically improved.

Meteorology Field Broad

Most people believe that meteorology and weather forecasting are identical. As a matter of fact meteorology covers a much broader field and the value of weather records goes far beyond this vital, but momentary job.

Observations lose their significance for the forecaster only a few hours after they have been made, nevertheless they are carefully filed for the study of climatic, or average conditions of a region over a period of time. The great majority of observations are not used for forecasting purposes at all. Climatologists map the average distribution of temperature, precipitation, humidity, cloudiness, duration of sunshine, wind velocity, the frequency

Other PGA sections could save themselves misunderstandings in golf school promotion tie-ups with newspapers by following the plan used by the Southern California PGA.

Entire membership of the SC section was furnished with mimeographed sheet of assignments giving time and place and names of pros to be instructors at each place during the second annual Los Angeles Examiner golf school.

of thunderstorms and fogs, the duration of the growing season and of snow covers and many other factors of vital importance to human activities. Not satisfied with fact findings they try to reveal the reasons for the existing differences and to utilize them for practical purposes.

The history of many an economic development is the history of adjustment to climatic conditions. Regions within the habitual paths of traveling disturbances, for instance, offer better conditions for cattle breeding and forestry than for crop raising. The St. Lawrence Valley, the New England States and Scotland, visited by 150-200 disturbances a year, are famous examples.

Regions with prevailing or "semi-permanent" low pressure are so stormy, rainy, cloudy and foggy that field culture is very difficult.

Under semi-permanent high pressure conditions crop farming is only possible by artificial irrigation, if at all. As semi-permanent high pressure is typical of the subtropics, nearly all deserts on earth are located in these latitudes. The available space permits only the enumeration of some problems.

What Is Climatology?

Climatology explains why climatic conditions are much more favorable east of the 100th meridian than west of it. It accounts for the odd and very fortunate fact that most summer rains in the interior parts of the U. S. occur by night, when they are most beneficial, while all the other continents on earth record summerly daytime rains. It makes us understand why Florida has up to 90 thunderstorms a year, while there are only three in California. It gives the reason for the cool and foggy summers along the Californian coast, which prevent the cultivation of peaches in certain regions, while the mountain peaks near the shore are much warmer. It explains why regular snowfalls on the Pacific Coast do not penetrate farther south than Oregon, while on the Atlantic Seaboard they occur 700 miles farther south down to North Carolina. It accounts for the fact that the New England and the Middle Atlantic states belong to the most regular regions on earth as far as dependability of annual precipitation and uniform distribution throughout the year are concerned; this fact is of importance to turf managers.

Meteorological research thus far dealt primarily with what is called "human climate". Our representative measurements

are taken at a standardized level of 6 feet above ground. But the lowest air layers immediately attached to the ground are subject to quite different conditions.

The differences between the "plant climate" of these layers and "human climate" as to temperature, number of frosts, frequency of extreme heat, humidity and wind velocity often are almost incredible and of extreme interest.

A new branch of research called "microclimatology" yielded scores of striking facts. Eastern flanks of hills receive the bulk of precipitation, although they are usually and with good reason considered to be lee sides; southwestern and not southern hill exposures record temperature maxima.

Microclimate is the more pronounced the higher the mass of vegetation; the climate of a forest is so influenced by the lack of wind velocity with resulting weakening of turbulence and of mixture of air that a very definite forest climate is encountered. Turf managers are much less interested in "plant climate" than foresters or farmers, because golf courses and lawns do not prevent the mixture of air between the lowest and higher levels. But everyone should be aware of the fact that the erection of buildings, walls, dams and the planting of trees highly influences the microclimatic conditions of the vicinity.

Greensmen Meet at Arlington Last Time; Plots to Beltsville

FOURTH annual turf meeting at the USGA's Arlington turf gardens on Sept. 22-23 was attended by some 200 greenchairmen, greenkeepers, and others interested in the problems of turf maintenance. As usual the meeting was sponsored jointly by the Green Section and the GSA.

Interest in the meeting was especially high, since the site of the Arlington Gardens has been requisitioned by the War department. Accordingly this was a farewell meeting. The plots are being moved to Beltsville, Md., but it is doubtful if they will be in shape for an annual turf meeting in 1942. As soon as something definite is developed at Beltsville, it is hoped that the meetings, which have attracted larger and larger attendance each year, will be conducted again under the same joint sponsorship. Experiments had been conducted continuously on the Arlington plots from 1920 to the present.

October, 1941

TIMELY TURF TIPS

MILARSENITE

In the fall of 1940 a mixture of Milorganite and specially prepared sodium arsenite was offered in limited quantity for clover and weed control in fairway turf. We named this mixture: "MILARSENITE." Several clubs used it on all fairways, while others treated only one or, at most, a few of their worst fairways. Everything considered, results obtained with this new product exceeded expectations.

In order to further explore the possibilities of this promising mixture, it was decided to continue production during 1941, but to limit sales again. Without advertising or solicitation of any kind, production this year more than doubled 1940. The increased demand was created by the fine results obtained from last year's treatments.

MILARSENITE has been used on watered courses devoid of suitable permanent grass, to kill weeds and clover before re-seeding. It has been eminently successful when applied three to four times at 250 to 300 pounds per acre each time. Play has continued without interruption during treatment and re-seeding.

Where permanent fairway grasses are uniform but thin, MILARSENITE used in a similar manner has given good results without re-seeding. This is true of unwatered as well as watered fairways. After killing clover and weeds the Milorganite in it nourishes the grass so it spreads and forms dense turf.

MILARSENITE has worked well on crab grass too. On heavily infested areas in need of re-seeding, one or two moderate to heavy doses killed the crab to permit early seeding. With lighter infestations several lighter applications prevented seed production without destroying the good grasses.

If you have a weed or clover problem, let us furnish the name of some nearby club which has used or tried MILARSENITE, so you can investigate and profit by their experience.

Turf Service Bureau

THE SEWERAGE COMMISSION

Dept. B-10

Milwaukee, Wisconsin

MILORGANITE for BETTER TURF

What A Job!

By **DAVID C. KENNEDY**
Supt., Birmingham (Mich.) GC

*Who is the man whose work is never done;
Who's on the course at midnight and up
before the sun;*

*Who takes the rap from nature and wor-
ries without pity*

*From star or dubbing golfer, and seldom
from Committee?*

THE GREENKEEPER!

*There stands a man in bunker tracks, his
face a surly pout,*

*Who hacks a hundred scars, and never
smooths them out.*

*He clambers up the grassy banks, ripping
out the sod.*

*Who's he cursing in those terms that call
upon his God?*

THE GREENKEEPER!

*Who's the man in fall, when payrolls must
be cut*

*Has to fire his workingmen; never nothing
but?*

*Still has to make a budget that's very
short and low*

*Compete with that of other clubs that
spend a lot of dough?*

THE GREENKEEPER!

*Who's the guy the club could hardly do
without;*

*Who pinches every nickel 'til he hears the
Indian shout;*

*Whose highest consolation when he's fin-
ally laid at rest*

*Is that courses keep themselves in the
regions of the blest?*

THE GREENKEEPER!

MT. PLYMOUTH HOTEL & GOLF CLUB

MT. PLYMOUTH, FLORIDA

JOHN D. BROOKS, Manager

JANUARY 1st to APRIL 1st

Sensible rates — Restricted clientele

18 hole championship course
Watered fairways & Grass Greens
Outdoor Swimming Pool
Fireproof Building
Sprinkler System
Pure Artesian Well Water

19th hole—Bar & Cocktail Lounge
Private Airport
Best Fresh Water Fishing
Private or Connecting Baths
Steam Heat Every Room
Fruit juices free. Our own groves.



WHAT'S NEW IN GOLF FOR 1942

NOT many changes will be made in playing or course maintenance equipment lines for 1942. In the course equipment field manufacturers contemplate that getting materials and labor to continue making present lines will give them an ample supply of problems, but probably not enough product to care for the demand. Manufacture of some equipment has been entirely discontinued.

Minor changes in design have been made in several instances in adjusting the product to supply of materials or parts. Manufacturers of maintenance equipment believe there probably will be further changes made in their 1942 lines as supplies and manufacturing conditions dictate. A big point with both maintenance and playing equipment makers has been that of making certain that the 1942 product will be of the uniformly high standard of the 1941 output, despite the pressure of priorities.

Wilson offers the golf professional the most complete and widest range of golf clubs in its history. The now-famous Top Notch irons, so popular with thousands of golfers, are being offered exactly as last year. In order to comply with the wishes of many golf professionals, Wilson is also offering Top Notch irons with super-dynamic chromium plated True Temper shaft, and narrower

soles, and some changes in the blade to suit certain styles of play. This new super-dynamic True Temper shaft appears in Wilson professional lines only, and it has met with unprecedented success. In addition to the Top Notch irons, this shaft is also carried in the four higher-grade wood clubs.

The higher-priced numbers in the new 1942 Wilson line also include the new center skived grip, which is perforated at the left hand only. This grip has all of the features which are so desirable in keeping the hands from slipping, and allowing maximum firmness, but is smooth and soft enough to obviate any possibility of injury from soreness of either hand.

The new 1942 Top Notch Green golf ball has been added this year, and has a more durable cover than either the Top Notch Red or Black, which have been in the line for the last two years; this rounds out the player-fitted picture.

In addition to improvements throughout the line, Wilson offers three entirely new clubs for this season in the new Top Notch wood, and Model No. 21 and No. 24 woods. The new Top Notch woods have been designed as running mates in appearance and efficiency with the Top Notch irons, and it is suggested that both woods and irons be sold as complete sets. The new models No. 21 and No. 24 have many features that are extraordinary at their relatively low price.

For INDOOR GOLF PRACTICE THIS WINTER—

**IN YOUR HOME
AT THE CLUB
AT YOUR GOLF SCHOOL**

**You'll do better if you see
Ederer equipment before
you buy**

Whatever your need in indoor golf practice equipment, Ederer has the right net for you: from small, inexpensive nets and targets that 'keep you in the groove' at home during the winter, to the complete indoor golf practice setups used by clubs remaining open during the winter, and by pros for their own indoor schools.

Ederer furnishes nets in any size or shape wanted. Nets from 18 ft. long, 9 ft. high and 9 ft. wide to nets measuring 20 ft. long, 10 ft. high and 12 ft. wide are in our regular stock; also canvas backs for nets, targets. Our dealers are well supplied— all orders are filled and delivered promptly.

Other Quality Sports Nets by Ederer

Complete line of Invincible tennis nets, tennis backstop nets, volley ball nets, badminton nets, etc., all of finest quality; in all standard sizes—in every price range.

See your dealer today for catalog and price list on Ederer equipment

R. J. EDERER CO., 548 N. Orleans Street, Chicago, Ill

Kaddie Kart

PATENTED



**IT ROLLS
WITHOUT
EFFORT**

**IT SERVES
PLAYERS
OR CADDIES**

We will furnish club officials with a plan for taking care of the caddie shortage. Write at once.

KADDIE KART MFG. CO.
105 N. Clark St., Chicago, Ill.

Please send information on your Kaddie Karts.

NAME.....
CLUB.....
ADDRESS.....
CITY..... STATE.....
PRIVATE..... FEE.....

IT'S GOOD BUSINESS

If you're looking for business you know you've got to go where the business is. That's the reason golf buyers come first to the Lytton Building to transact their business—because the Lytton Building is the golf trade buying headquarters of the world! There are, by a wide margin, more golf tenants with 14 E. Jackson Blvd. as their address, than any other building can boast. These firms 'cash in' on the drawing power this location gives them.

But in addition —

The Lytton Building is an all-around 'good building to be in.' It's at the 'Hub' of the better business locations in Chicago's loop. Rents are reasonable, suites are arranged to your liking, there's every transportation facility, and you'll not find a better maintained building anywhere. May we tell you what we can do for you?

THE LYTTON BUILDING

Golf's Most Famous Address

14 E. Jackson Blvd.

Chicago

United States Rubber Co. announces that its True Blue U. S. Royal, Three Star U. S. Royal, and U. S. Fairway will have attractive holiday wrappers over the regular dozen-size packages, to help to sell them as Christmas gift items. Both ends of the packages will be sealed with embossed, colored seals or stickers showing brand names of the balls.

For 1942, the Toro Mfg. Corp. is offering a new model dump box tractor which it has appropriately named the "General." The main feature of this tractor is that it is a combination all purpose tractor-truck that will handle a variety of maintenance work. For new construction, for alterations such as moving dirt, sand, sod, or anything of that nature, the box will be found very helpful.

When not in use as a hauling unit it can be used as a tractor for pulling gang mowers, operat-



The 'General' in action.

ing a sickle bar, or in the wintertime pushing a snow plow. The General uses a Ford four cylinder tractor engine, has a speed range up to 31 m.p.h., with a four speed transmission. It is substantially built throughout, with all-steel one yard dump box.

Perfection Sprinkler Co. reports a few changes for '42 on the new Perfection sprinklers introduced last year.

The principal change is in the use of a flexible rubber "bumper" which is hinged to the upper driving arm that turns by the force of the water. As the driving arm turns, the rubber bumper is thrown outwardly and down into position to "bump" the main sprinkler arm with each rotation in a slow, step by step, turning motion.

This change has greatly simplified the con-

BENT GRASS SEED

**Piper Strain Velvet Bent
Native Grown
Rhode Island Bent**

All our seed is prime and viable, which assures the very highest possible germination. It'll pay you, as it has hundreds of other clubs, to use our native grown, winter hardy, acclimated seed of known origin.

Also **FAIRWAY
MIXTURES**

Save for your club—buy seed
direct from the grower

A. N. PECKHAM

KINGSTON, R. I.

THANKS, PROS

FOR MAKING THIS —

1933—Parglovs outsold all others
1934—Parglovs outsold all others
1935—Parglovs outsold all others
1936—Parglovs outsold all others
1937—Parglovs outsold all others
1938—Parglovs outsold all others
1939—Parglovs outsold all others
1940—Parglovs outsold all others

1941—Parglovs outsold all others

— **ANOTHER RECORD YEAR!**

Orders for spring delivery, at today's prices, are now being accepted, so better tell us your '42 requirements NOW. And you pros in the South and West—be sure you have a big PARGLOV stock on hand when your season opens shortly. Your players will demand them because PARGLOVS are golf's most popular glove.

THE K. L. BURGETT CO., Peoria, Illinois

PARGLOV

The World's Fastest Selling Golf Glove

struction and will extend the life of the sprinkler almost indefinitely as the rubber is of the same



material used on automobile tire treads, and actual service shows there is practically no wear.

A. S. Lyndon, manager, says that the rubber also effects a great improvement in that it acts as a

Among the Spalding salesmen and executives present at the company's annual pro sales meeting when the cameraman went into action were: W. Wood, H. Purvis, R. Albaugh, Baymiller, Horton Smith, G. Browne, R. Vinton, P. Wood, C. Houck, B. Leman, D. Leonard, W. Powell, G. Temple, H. Amtmann, C. Weaver, G. Novotny, H. Nannen, L. Thompson, W. Shafter, M. Kiernan, P. Ferree, T. Frainey, J. Dawson, T. Sloan, Jimmy Thomson, J. Miller, L. E. Coleman, A. Williams, C. Seymour, W. Roberts, E. Aurin, Voges, P. Halebaugh, G. Jackson, G. Dawson, A. Ruisinger, R. West, E. Kearney.



DON'T

"HANG UP THE GLOVES" ON
BROWN PATCH!

Green, healthy turf is just as important now as in midsummer, and brown patch is no less a danger in the southern states. So "keep punching" with Special Semesan! Its extreme economy, easy application, quick action and the saving it effects in labor costs make it a practical all-season defense—vital to turf vigor. Stocked along with *Regular Semesan* and *Nu-Green* by your supply house. For free Turf Disease Pamphlet, write to Bayer-Semesan Co., Wilmington, Delaware.



SPECIAL SEMESAN

shock absorber and has a grabbing action which results in an "almost human" positive, slow turning motion that is so necessary for large, even coverage.

Spalding golf pro salesmen, Manhattan to Frisco, gathered at Spalding's Chicopee, Mass. factory, the week of August 18, for the company's annual sales meeting and presentation of 1942 merchandise. This year's meetings were again led by L. E. "Lu" Coleman, Spalding vice president of sales. Mat Kiernan, Spalding's ass't. vice president of golf sales, introduced the 1942 lines.

At a presentation of Spalding's 1942 advertising plans, J. C. Gibbons told how the program was built around Spalding's exclusive product stories; how all 1942 advertising material was geared to



Over 500 Clubs
Use This Spreader!



The All-Purpose **ROOT**

SPREADER

3 exclusive features (Lock Feed Set, Finger Tip Control, Triple Agitation) make it America's most efficient spreader for applying compost, fertilizers (all commercial brands), seeds and insecticides. See your dealer or write.

THE ROOT MFG. CO.

1311 WEST 80th CLEVELAND, OHIO

R. H. Tractor Wheel SPUDS

quickest to put on or take off. Increase tractor efficiency and cultivate turf . . . that's why more than half the U.S. and Canadian clubs use them. Durable and low priced. All sizes for all purposes. Sample spud and circular on request; advise make of tractor and purpose for which intended.

Immediate shipment. If your Ford or equipment dealer cannot supply, write direct to

R. S. HORNER
Geneva, Ohio

MFR. OF SPUDS, FORD-SON WHEELS, ETC.



help pros sell these features.

Matt Kiernan, in presenting new merchandise, said: "The building of golf and the promotion of golf professionals has been a part of Spalding since golf began in America. Today Spalding's widely advertised exclusively professional lines of golf balls and golf clubs are but a continuation of Spalding's early policy of promoting golf through professionals."

As usual, Bob Jones, Horton Smith and Jimmy Thomson, Spalding consultants, were among those present.

Crawford, MacGregor, Canby Company recently concluded its annual sales convention, where the largest gathering of field men ever assembled in Dayton discussed policies, products and promotional ideas for 1942.

The meeting was chaired by Clarence H. Rickey, president, and the keynote of his opening remarks was "Seeing 1942 as a Challenge to Salesmen". Rickey then proceeded to outline his program whereby all materials and production will be concentrated on pro-only merchandise. Every account will be rated according to kind of merchandise purchased, how much, and ability to pay.

Perhaps the outstanding decision and revision in

policies made, was going pro-only on MacGregor golf balls. Rickey plainly told the field men how OPM had reduced golf ball manufacturing and the vote for pro-only on golf balls was overwhelming.

Another new innovation was the introduction of a new pro-only club authored by Jimmy Demaret. The new single flange blades have square toe pitching irons, including the niblick, while the wood has large pear shaped head. The shaft is the new True Temper Dynamic shaft and the all-weather Burke grip. So in its entirety the club is new and is meeting with great pro and consumer acceptance. The Tommy Armour Tourney woods and irons are held intact with little change.

A few new MacGregor-Tufhorse golf bags were introduced and the complete line of fall and winter sportswear was shown.

Rickey also announced several territorial changes, sending Ernie Sabayrac to the Detroit section, Fred Duncan to New Jersey and Long Island, Ock Willoweit to cover Pittsburgh in addition to Ohio, Ted Smith into West Virginia and Virginia, and Dutch McClellan taking on additional pro territory. These men will concentrate on pro-only merchandise and with smaller territories will be able to visit their accounts more frequently.

The climax of the convention was the presentation to Rickey of a gold-cased wrist watch from his sales force. On the back of the watch was en-

Pictured below is the 'gang' at the annual MacGregor sales convention held in Dayton recently. Clarence Rickey, president, is shown at extreme right. Tommy Armour is at Rickey's left.



ROBERT TRENT JONES

Golf Course Architect

20 VESEY STREET

NEW YORK

CADDIE BADGES—We have a number of designs in metal. Circular on request, The C. H. Hanson Company, 303 W. Erie St., Chicago, Ill.

graved every field man's name, and the present came to Rickey as a complete surprise. Harry Adams made the presentation.

After four working days the meeting wound up with a champagne banquet. The toastmaster was Tommy Armour who delivered one of the very eloquent talks for which he is so famous. Everyone enjoyed himself and left with a determined effort to meet the 'challenge' of 1942.

L. R. Nelson Mfg. Co., Inc., Peoria, Ill., anticipates no trouble on material shortages on its line of sprinkling equipment for the coming season, announcing that it has stock to take care of all orders for golf clubs, parks, estates, etc. Stocks now on hand will permit prompt service on shipments this fall and the company is anticipating at least a normal business on its sprinkler line for the coming year.

The Burke Golf Co., Newark, Ohio, announces that Burke's 1941 professional line, which met with outstanding success with pros and players everywhere, is being continued for 1942 unchanged.

Levings Golf Co., 1359 W. Jefferson, Los Angeles, Calif., is making Macdonald Smith golf clubs to measure and is supplying pros with order forms on which the customer's specifications are to be written. The clubs are of the Levings Inlayed wood type and may be had in the choice of 5 finishes of wood heads.

En-Tout-Cas America, Inc., 630 Fifth Ave., New York City, makers of world-famous En-Tout-Cas

GRASS SEED

of

"Known Quality"

Write for New Fall Prices

Stump & Walter Co.

SPECIALISTS IN GOLF GRASS SEEDS,
FERTILIZERS AND EQUIPMENT

132-138 Church St. (Cor. Warren St.) New York

materials for tennis courts for more than 25 years, has been doing considerable business with golf and country clubs who today are more and more installing the recreational facilities that make their clubs true 'family' clubs. En-Tout-Cas fast-drying surface, which permits tennis shortly after any rain, no matter how heavy, provides the ideal answer to any club's tennis court problem, whether it's in regard to present tennis courts—drainage, surface, maintenance, equipment—or new court installations. En-Tout-Cas maintenance costs are claimed to be far less, and installation costs as low, or lower, than any other fast-drying court made. The En-Tout-Cas company will be glad to advise any club on its tennis court problem. Just write the company and ask for its consulting service.

Hillerich & Bradsby Co. for 1942 will have new wood models in every price range, with new designed sole plates and many new finishes featured in the various models. Models that will prove to the liking of all golfers—from the professional to the 100 shooter—have been assembled. Says the company in reporting on the line:

"In the '42 line of irons we are featuring two in the top line in stainless steel—one of plain back design, and the other with the flange sole. In these two models we have built heads with the proper weight distribution to produce the greatest

Three Styles of One-Color

Score Cards

of Excellent Quality are

Priced \$20 to \$25 for 5,000

Produced by a New Process they are complete and of correct size.

Samples of these and higher priced 2-color cards to clubs on request.

JOHN H. VESTAL CO., Printers
703 South La Salle Street --- Chicago

The New, Better "Wichita Wonder" gives

PERFECT COMPOST

It Chops, It Screens, It Shreds
It Grinds, It Piles, It Mixes—
All in one operation!

The new "Wichita Wonder" grinds, shreds, or chops any material—any condition—wet or dry, to any degree of fineness. Sturdy construction for long trouble-free use. Low power, high speed, big capacity—AMAZING PERFORMANCE. Gives so much more for less money—should be a must on every club budget for next year.

W-W GRINDER CORPORATION
DEPT. D WICHITA, KANSAS



No Tampering. Lid Is Locked

Lock-Lid Lawn Hydrant Boxes disallow tampering; prevent water losses. Replace all present open-lid boxes with Murdock "Lock-Lids." Specify Murdock "Lock-Lids" for all new installations. Send for catalog "L."

MURDOCK

The Most Reliable Name on Water Service Devices

It's Not Only the 19th Hole

The popularity of a Club hinges as much upon the number of Drinking Fountains found on the course as upon what is served at the 19th.

The Murdock Mfg. & Supply Co., Cincinnati, Ohio



Attention Greens Committees—

When planning and budgeting for the coming year, please bear in mind:

The Greens are the foundation of all successful Golf Courses.

WASHINGTON

OLD ORCHARD

OLD ORCHARD TURF NURSERIES

Box 350 — R. R. Bond — Madison, Wisconsin

reasonably priced so as to create more interest among the younger generation to take an active part in golf."

The Skinner Irrigation Co., Troy, Ohio, says that changes made in the last year in the Skinner System line have been primarily improvements in detail which add to the convenience of the equipment.

On the Roto Spray sprinkler two quite useful features have been added. The bypass, which controls the water going through the vibrator chamber, permits of operating this vibrator at the most efficient speed under any pressure. On sprinklers heretofore the effectiveness of the vibrator changed with the pressure. Also, an ingenious strainer has been added. Not only is the strainer removable without disturbing any other part of the sprinkler, but it is so designed that it can be flushed out while the sprinkler is in operation and under pressure. This is an entirely new feature and is very valuable to operators of sprinklers, particularly those who are working at night with little or no light.

The Skinner "Superior" snap valve combines all of the valve operating mechanism in a single unit which is removable from above ground.

Any golf course, even with a large number of sprinklers, can carry two or three extras of this valve unit at a comparatively small cost. If any of the valves do become dirty and have to be cleaned to an extent where they must be removed, the whole valve unit can be taken out and one of the extras installed and the work done at the golf course shop.

A "Double Acting" valve also has been developed of such construction that the valve mechanism can

distance and accuracy. In achieving the ultimate in weight distribution, we have not sacrificed any of the fine characteristics of appearance for which Power-Bilt irons have always been noted.

"The registered 1090, which is the plain back designed iron, is furnished with the new Dynamic True Temper shaft in three flexes. The registered 9590, or the flange sole model, is furnished both with the True Temper shaft and the Heddon Speed Swing shaft, besides having two-toned all-leather grip. In addition to these two models, there are many new features on all irons in every price range.

"A wide selection of shafts is featured, too. One shaft that is being especially featured in the top-priced woods and irons is the Dynamic shaft by True Temper. This shaft is supplied in three flexes—black ring, which is stiff for the professional or the topnotch player; red ring, which is standard for those players who do not want a shaft too stiff but with some feel; and the gold ring, which is semi-flex and is constructed for those players whose wrists are not strong and who need some flexibility in the shaft to help them.

"In ladies' clubs we have considered every angle to turn out equipment of the proper lengths, weights and models suitable for ladies' play.

"Our line of juvenile equipment includes three woods, five irons and a bag. These sets are very

Fifteenth annual sales meeting of the L. A. Young Golf Co. was held August 21-23 in Grand Rapids. A visit to the factory in the morning and a golf tournament in the afternoon made up the first day's program. Friday and Saturday were devoted to presentation of the line, discussions, etc., with a banquet Saturday evening concluding the festivities. Because changes in the Hagen line for '42 will be very minor, more time was available for informal discussions and the interchange of opinions. The Pantlind Hotel was meeting headquarters. C. G. Christopher and Ed J. Somerville carried off honors in the golf tournament held at the Blytheheld CC, Christopher winning low gross and Somerville low net. Those on hand when the photographer was present were, left to right: C. J. Burke, Burke-Thummler Co. — Canadian licensee; George J. Herrmann, secy.; R. F. Smith, vice-pres.; C. G. Christopher; E. J. Somerville; E. P. Rankin; W. Brown; R. Geerling; Paul R. Sage; E. T. Fuerst; R. J. Boshoven; George Eberle; L. Bayne; T. Stevens; B. Minkley; H. E. Mitchell; E. E. Chapman, president; G. F. Goyette; Larry Dow.

