

It's the biggest campaign Acushnet has ever run!

And look at the boost they're giving us pros!

Boy oh, boy oh boy! is this a campaign!

Nobody can miss ads like those!

Color in the Saturday Evening Post!

Hey, you pros! — if you want to see something that will sell golf balls for you take a look at this!

It starts this month — better get your orders in

Here's the kind of talk I like to hear

Me too — that really helps

"Through the pro shop only" — that's the ticket

That's what I like to hear!

"Ask your pro" — that's tellin' 'em!

Acushnet is sure going to town this year

Ask your pro what ball to play. He knows golf balls as well as he knows your game. And ask him why — in thousands of pro shops — more Acushnet Balls are sold than any other brand.

ACUSHNET
GOLF BALLS

SOLD ONLY THROUGH PRO SHOPS

Titleist, 75c Bedford, 75c Green Ray, 50c Pinnacle, 35c

Here it is!
ACUSHNET ADVERTISING CAMPAIGN
to help the pro sell golf balls in 1941

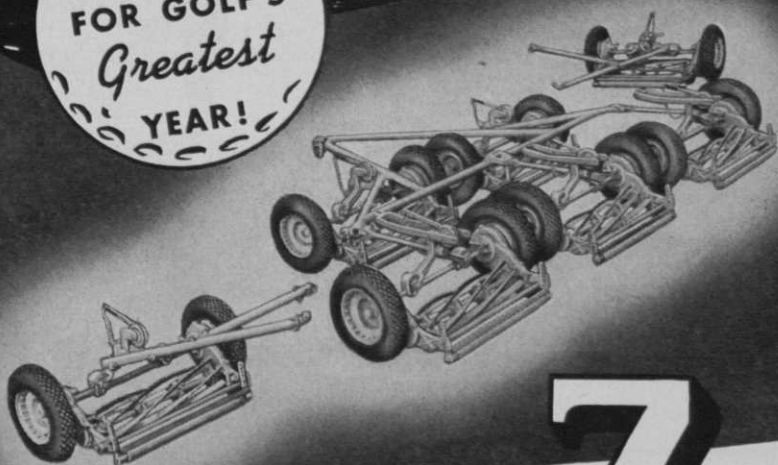


Best magazines in the country! All my members read 'em!



ADVERTISING THROUGH YOUR BEST SEASON IN THESE LEADING MAGAZINES

PREPARE
FOR GOLF'S
Greatest
YEAR!



WITH THE LABOR-SAVING **7** Gang PENNSYLVANIA FAIRWAY

This year your biggest problem lies — not in getting enough players — but in maintaining good playing conditions for the thousands who will tee off on your course. This heavy traffic presents a maintenance problem that will be aggravated by an acute shortage of unskilled labor.

This problem is easily solved. The 7-Gang Pennsylvania Fairway saves time, labor and money. And you get a bonus of 20% if you use the special 35-inch units — which cut a 20% wider swath than the conventional 30-inch size. This means a 20% saving in time, fuel and — most important at this time — a 20% saving in labor.

MANY REFINEMENTS THIS YEAR

The popular light-weight tubular frame has been further improved this year, making for the utmost flexibility in transportation and storage of the gang mowers. The iron wheel model has spuds cast on the treads to prevent slippage and to add to the life of the wheel. The casting with the lower blade attached is now removable without dismantling the mower. These are but a few of the outstanding features of the Pennsylvania Fairway, completely covered in our new catalog.

SEND FOR
NEW 1941
CATALOG

Have all the facts before you when you select your new mowers. This 1941 catalog shows all the special Pennsylvania Golf Mowers that can save you money and solve your labor problems.



Write for
Catalogue

PENNSYLVANIA

LAWN MOWER WORKS

PRIMOS
PENNA.

BUCKNER

Quick-Coupling

SPRINKLERS

FOR COMPLETE COVERAGE

BUCKNER Model 6
Quick Coupling Sprinkler

•For longer life, finer performance and greater economy, investigate NOW! 1. Positive Slow-Motion Control. 2. Self-Cleaning Head eliminates clogging. 3. Sand-Proof, Lubricated Double Bearings—water and grit never touch wearing surfaces, assuring long, trouble-free operation. In use on thousands of acres of hundreds of leading golf courses. Backed by over 25 years of experience and research. Write TODAY!

Coupler and sprinkler as an integral unit are only one of many original Buckner features.



BUCKNER MANUFACTURING CO.
FRESNO, CALIFORNIA

7658 Calumet Ave.
Chicago, Ill.

7280 Melrose Avenue
Los Angeles, Calif.

HIGHLIGHTS OF 15th

G. S. A. CONFERENCE

IF the order books of salesmen stationed at the exhibit booths of the 15th National Turf Conference and Equipment Show held in Detroit are any barometer the nation's golfers can depend upon excellently maintained courses this year. Heavy buying was the keynote of equipment display visitors, and an unprecedented volume of business was placed for immediate and early spring deliveries. Several tractor and mower outfits sold all of their display equipment on the floor and received many additional orders. For the first time in almost a decade the golf equipment and supply manufacturers were united in their optimism for a banner golf season.

The annual banquet staged Thursday evening Feb. 6th drew more than 300 patrons—a new record for festive occasions at these annual sessions. Mr. Harvey J. Campbell,

Harold Stodola

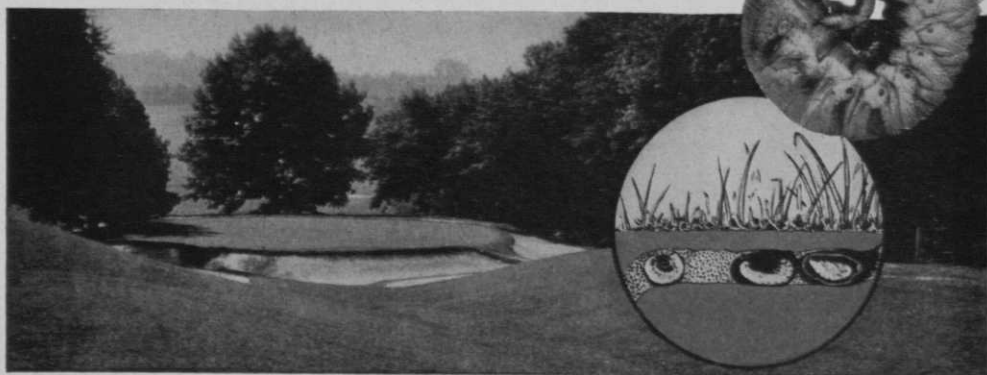
Superintendent,
Keller Course,
St. Paul, Minn.,
newly elected
GSA president



vice-president of the Detroit Board of Trade and toastmaster for the affair, demonstrated by his clever handling of the speakers table, why Detroit is such a progressive city. The banqueteers were favored by remarks from officials of the Detroit District Golf Assn., GSA President Gray, Frank Sprogell, Sec. of PGA and several GSA leaders. Herb Graffis, editor of GOLFDOM and GOLFING presented, in behalf of the association, its Distinguished Service plaque award to Wm. H. Johnson,

LIFE or DEATH

Will it be Your Greens or Grubs and Worms?



MILLIONS of tiny grubs will waken this month to begin their annual destruction. This spring the Japanese Beetle grubs—shown in the circle above—will begin to feed on tender grass roots, causing millions of dollars of destruction to golf courses.

But—in these spring months, grubs and worms are easy to control. NOW is the best time to destroy them, before they destroy

your greens, tees, fairways. And the best way to control grubs and destructive earthworms is with GRASELLI Lead Arsenate. Simply applied, as a spray or a dry mixture, GRASELLI Lead Arsenate penetrates the soil to the principal feeding layer, bringing death to these pests!

Don't wait until the grubs have chewed up tender grass roots—see your golf supply dealer NOW . . . or write us for full particulars.

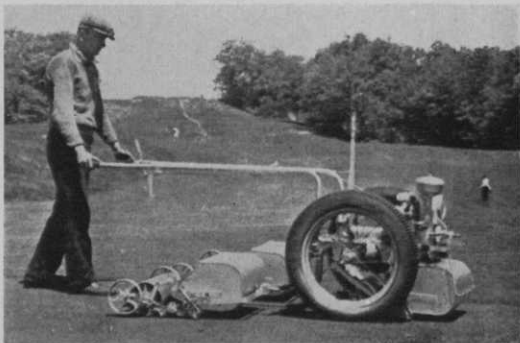
E. I. DU PONT DE NEMOURS & CO. (INC.)
GRASELLI CHEMICALS DEPARTMENT
WILMINGTON • DELAWARE



GRASELLI
LEAD ARSENATE

Three Worthington Putting Green Mowers that save you labor-hours and money

No matter which of these three Worthington Putting Green Mowers you buy, the cutting units are identical. In other words, you can convert the Scout into the Shawnee Clipper by the addition of the motor and should you decide to reduce further cutting time and costs, your Scouts or Clippers may be converted into the Overgreen at any time.

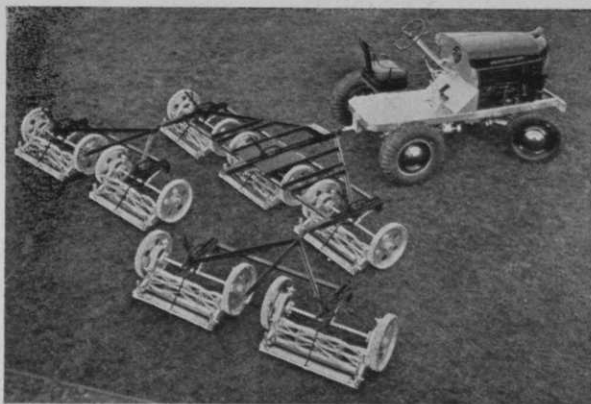


OVERGREEN—above • The famous Worthington Overgreen is used by many of the leading courses of the country. One man with an Overgreen can cut the full 18 holes in 5 hours including travel time between greens. Hand cutting takes from 18 to 22 man-hours on the average course. The Overgreen is here shown in use at the Yale University Golf Course.

SHAWNEE CLIPPER—left • The new Shawnee Clipper is a development of the well-known Worthington Scout Hand Putting Green Mower. Powered by the sturdy and dependable Briggs and Stratton motor which drives the fly knife reel for faster, easier cutting, it may be controlled by hand with a minimum of effort. Wherever possible, aluminum is used to reduce weight. Worthington finger wing-type positive adjustment for changing height of cut eliminates tools, and adjustment may be made on the green itself with no loss of time.

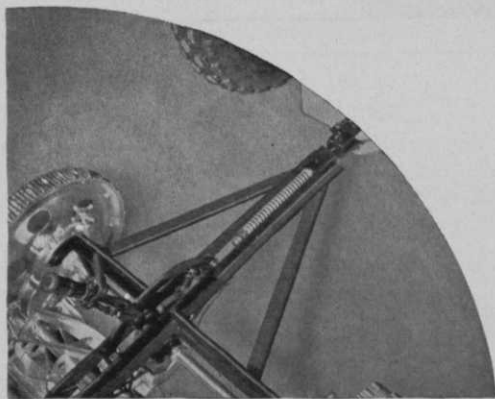
SCOUT MOWERS—right • Worthington Scout Hand Putting Green Mowers are easy to operate. Built of aluminum of high tensile strength, they are light and ball-bearing equipment makes them less tiring. The split roller enables the Scout to turn sharply without marring the turf.





Worthington Tractors and Gang Mowers give you better fairways at lower cost

Greenkeeping superintendents from every section of the country are enthusiastic over the new Worthington Cutting Unit with its wider, harder blades, its exclusive hand adjustment for regulation of the bed knife steel, its hand adjustment for height of cut (no tools required), and its automotive-type lubrication which needs attention only twice a year and at only two points instead of the 6 outside points of lubrication on the average ordinary cutting unit.



DRAW BAR SPRING—left • And now for 1941, Worthington is adding to its gang mower frame this patented, yielding draw bar which prevents turf injury by giving a smoother start with any make of tractor. The spring yield allows the tractor wheels to move forward and gain momentum before taking up the dead load of the gang mower, plus the added resistance of uncut grass. This prevents wheel slippage and injury to turf.

Why not look over your mowing and maintenance equipment now. Tear out and mail this coupon, today, for complete, illustrated catalogue of Worthington Golf Course machinery that can save you time, labor and money, too.

WORTHINGTON MOWER COMPANY

STROUDSBURG, PENNSYLVANIA

• SALES AGENCIES: ALL PRINCIPAL CITIES

COUPON

WORTHINGTON MOWER CO.
STROUDSBURG, PA. Dept. 3/GM

Please send me your Golf Course Catalogue at no obligation.

NAME _____

ADDRESS _____

CITY _____

STATE _____

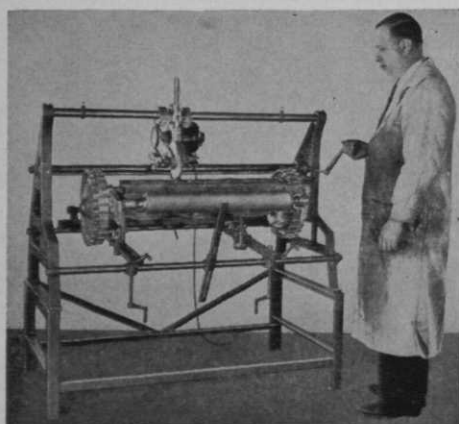
SKINNER SYSTEM OF IRRIGATION



SERVICE...

● Take advantage now of the Skinner System Planning and Engineering Service... it's available to any Club considering Golf Course Watering. Skinner System equipment, coupled with over 25 years of irrigation engineering, is the right combination to assure economy in first cost, efficiency in performance and permanent satisfaction. Write for free Golf Manual and tell us your irrigation problem.

The Skinner Irrigation Co.
415 Canal St. Troy, Ohio



CARPENTER MOWER GRINDER

Grinds bottom knife and reel blades . . . quickly and economically . . . on any power or hand lawn mower, including large power or tractor-drawn units. Precision contact of cutting blades assured. No experience needed . . . no attachments . . . no lapping. The modern, simple method.

Write for prices and name of nearest dealer.

THE GRAHAM MFG. CO., INC.

(Formerly NARRAGANSETT PRODUCTS CORP.)

East Greenwich, R. I.

G. S. A. HIGH LIGHTS

Griffith Park GC, Los Angeles, Calif.

T. T. Taylor, elected to 2 year term as director, a new face in the leadership ranks of the GSA, is 41 years old and was formerly secretary of the Metropolitan (N. Y.) District Golf Ass'n. He has one of the most important greenkeeping jobs in the world—at the Westchester CC (formerly Westchester-Biltmore) where he has two 18 hole courses and a 9 hole course to supervise. Taylor holds a degree in agronomy and a M.S. degree from the University of Maryland. He is married and has two children.

Wm. H. Johnson, new director, 42 years old, 6 foot 2 inch supt. of Griffith Park GC, Los Angeles, probably the world's busiest course, playing to 248,000 rounds in 1940, is a newcomer to GSA officialdom, also. He received the Man of the Year award, a beautiful silver plaque, this year in recognition of his writings on lawn construction and care that have been widely reprinted, and because of his efforts to organize

Golfdom

CHAMPION

POWER GREENS MOWER

BY
Cooper

CUTS MOWING
COSTS

50%

One man with the CHAMPION mower can now cut twice as many greens or more, than is possible by hand mowing. Eliminating the time of one man will cut mowing costs 50% or more.

Dead weight has been eliminated in the CHAMPION. Greens will not pack and can be cut smoothly, evenly and with no trace of cutting lap, corrugations or scalping.

New clutch design engages without grabbing • High speed reel insures smooth cut greens • Micrometer exactness for adjustment of reel to bed plate • Rear roller design provides uniform lap of cutting swath • Latest type Briggs & Stratton engine • Transport cart and grass box standard equipment • New brush attachment optional at additional cost.



Write Desk (3) 427 for demonstration appointment and new literature.

COOPER MANUFACTURING COMPANY

427 South First Ave.

Marshalltown, Iowa



**Greens and fairways can
be ready when your season
opens—feed Swift's
Special Golf
Fertilizers and
Vigoro now!**



● You can do a *great deal* to get your course into *top* playing condition by the start of the season if you feed Swift's Special Golf Fertilizers and VIGORO . . . and do it *right now!*

These effective, scientifically developed fertilizers have proved themselves on leading golf courses everywhere. Applied early, they produce strong roots, choke out weeds and help assure healthy, perfect grass.

A Swift representative will be glad to recommend the particular fertilizer that will best suit *your* soil problems. Write

**SWIFT'S SPECIAL
GOLF FERTILIZERS
and VIGORO**

U. S. YARDS—CHICAGO



G. S. A. HIGH LIGHTS

educational facilities for West Coast greenkeepers.

Harold Stodola, the new prexy, from Minnesota's famous Keller Park course, is 37 years old, married and the father of 2 children. He has long been active in the GSA. Harold started to caddie on Minneapolis courses when he was about the height of a putter. Upon graduation from high school he spent 2 years in Washington, D. C., as a government clerk. He returned home to register at the University of Minnesota in the Agricultural College. He paid his college expenses by working as a part time employe on Twin Cities golf club maintenance crews and managed to win the university golf championship in 1926. His work in school was so outstanding that he was offered the greenkeeping job at Keller Park in 1928 and left at the end of his junior year to assume this important job—where he has since remained.

A. L. Brandon, 33 year old superintendent of the St. Charles (Ill.) CC, was elected for the eighth con-

NELSON

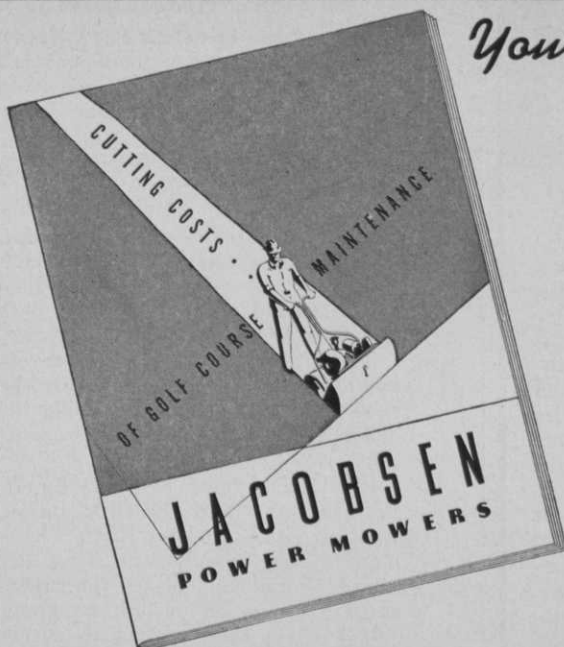
Sprinkling Equipment

"Silver Top"
Quick Coupling
Valves
Rain Bird and Lark
Sprinklers

Send for new
catalog
**L. R. NELSON
MFG. CO.**
PEORIA, ILLINOIS



Yours for the asking!



The Jacobsen 1941 Golf Catalog is hot off the press and includes a more complete line than ever offered previously.

- Fairway Mowers
- Greens Mowers
- Tee Mowers
- Bank Mowers
- Sickle Bar Mowers
- Hand Mowers

Write for your copy today—
Ask us for CUTTING COSTS
of Golf Course Maintenance.

JACOBSEN MANUFACTURING CO., Racine, Wisconsin

THE STAMP OF APPROVAL HAS BEEN PLACED ON FUNGOL!



GREATEST TURF FUNGICIDE AND VERMICIDE AT LOWEST COST

If you take pride in having Putting Greens to attract the playing public, this product will be a real help to you.

When you pay your money for Fungol, you are sure of two things—First, with it you can easily prevent and control large and small Brown Patch most effectively—Second, you will be getting this service at an unexpectedly low cost, due to its high multi-chemical content.

Chemical costs are rising—and yet Fungol sells at prices lower than formerly. If you will just sit down and write us for the facts and free testing sample, we will show you really how to economize this season.

We will also include full particulars about Fungol containing extra chemicals at no extra cost for combatting Earthworms, Sod Webworms, Cut-worms and Grubs. Write today.



GET
OUR
NEW
LOW
PRICES
NOW

McCLAIN BROTHERS COMPANY

CANTON, OHIO

TIMELY TURF TIPS

WHY MILORGANITE?

Milorganite possesses qualities not found in any other fertilizer. It is a non-toxic, organic turf builder because more than 90% of its nitrogen is water-insoluble, yet available. This nitrogen is dissolved by soil processes at a uniform and continuous rate—just sufficient to supply the immediate needs of the grass. Thus Milorganite minimizes trouble due to temporary excesses of nitrogen, which may result when toxic sources of soluble nitrogen are used as the sole source of this element.

Besides containing ample phosphoric acid for a season's growth, Milorganite is richly endowed with all the vital trace elements needed by grass and other plants.

Being water-insoluble (yet highly available) immediate watering is not necessary to prevent discoloration or damage due to scorching of grass. Uniform distribution is the only necessary precaution.

Exceptional mechanical condition makes Milorganite the easiest of all fertilizers to handle and apply. Always granular and free from dust—hence clean and easy to apply, even on windy days. Milorganite never deteriorates or cakes during storage, and will not rot the bags.

And best of all, the unit cost of plant food in Milorganite is less than in any other organic fertilizer of equal quality.

. . . .

Write for descriptive bulletin, with detailed instructions for Milorganite applications . . . and make use of our Soil Testing service. Write Dept B-3.

Turf Service Bureau

THE SEWERAGE COMMISSION
Milwaukee Wisconsin

MILORGANITE for BETTER TURF

G. S. A. HIGH LIGHTS

secutive term to act as Sec'y-Treas. of the GSA. Brandon doubles as editor of the organization's magazine and is widely known for his ability as a photographer. He is an engineering graduate from Armour Tech, Chicago, Ill.

Edw. B. Cale, scholarly looking vice-president of the GSA, is supt. of the 36-hole Canoe Brook CC, Summit, N. J., where in 1936 Pam Barton, British lass, romped away with the 40th Women's National.

That the GSA's activities are expanding in scope can readily be seen from actions evoked during the delegates and board business meetings.

Significant facts revealed by H. L. Bancroft, Supt. of City Parks, Lansing, Mich., and Joe Ryan, Chairman of the GSA Federal Turf Research Committee, caused the greenkeepers to go on record, as going "all out" in their efforts to secure Federal aid for turf research. Pertinent facts from authoritative sources stated by Bancroft and confirmed

HOOT MON I'M

"PADDY"



the **NEW**
LEWIS
paddle-type
Golf Ball WASHER

NEW MODERN DESIGN
EFFICIENT, LOW COST



Ask about One Dollar **TRADE-IN OFFER** on old washers.

G. B. LEWIS COMPANY
Department G3 WATERTOWN, WIS.