

Green Ray is the Answer to your Cut-Price Troubles . . .



● **YOU KNOW** the Green Ray. You know it's the biggest 50-cents worth of golf ball anyone ever drove off a tee. You know that neither *the profit it carries* for you, nor the *game it delivers* to your members, has ever been tampered with. It's *still* the long, fine-feeling, Geer Cover ball it has always been. Sell it on the *basis of performance* to your less experienced players . . . they won't change in a hurry.

● **TO YOUR** old-time Green Ray enthusiasts who have started fooling around with cut-quality "50 centers," explain to them gently but firmly just what they're *not getting* for the few cents they save . . . and why. Long, straight drives and putts that *run true* to the cup every time are worth a few cents a month . . . even when only the caddie fees and the drinks are at stake.



● **AND FOR** those poor, misguided victims of bargain tables in down-town stores . . . the men buying the so-called "specially reduced" 75-cent balls, with so-called "vulcanized covers" . . . just ask them to hit a Green Ray, *without telling them the price!* You won't have much further trouble with down-town store "75-cent" (so-called) competition. Acushnet Process Sales Co., New Bedford, Mass.

TITLEIST, 75c

ACUSHNET

GREEN RAY, 50c

BEDFORD, 75c

GOLF BALLS

PINNACLE, 35c

CHEERIO



The new Ford Army Scout Car Tractor Engine — Four speed transmission, Clark heavy-duty rear axle, 69½ inch wheel-base, 5.50 x 16 front, 7.50 x 18 rear tires.



Here's a real comfortable fully upholstered bus seat mounted on a coil spring for easy riding.

The New 1942 **BULLET** is Exactly what YOU Wanted!

You've been after us to give you a new Tractor with a four cylinder engine. We've done it!

You've insisted on a spring-mounted front axle. You've got it!

You asked for the old reliable heavy-duty Clark Axle. It's yours!

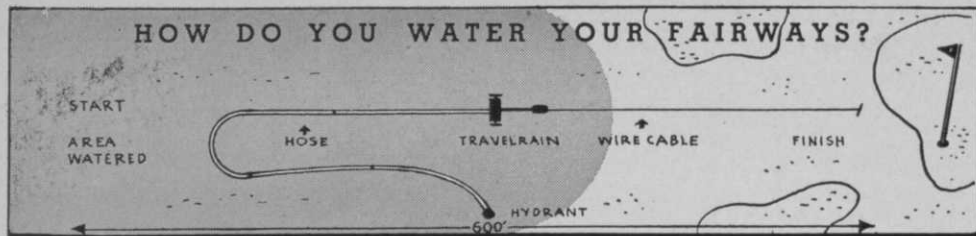
You've squawked about the seats. Now you get a fully upholstered bus seat.

All of these and more too in the New Bullet.

Write us for complete specifications. This is a peach.

TORO MANUFACTURING CORPORATION
MOWING MACHINERY SPECIALISTS FOR OVER 20 YEARS
MINNEAPOLIS **MINNESOTA**

HOW DO YOU WATER YOUR FAIRWAYS?



THE TRAVELRAIN METHOD

ELIMINATES HAND MOVING OF SPRINKLERS. . . FULLY AUTOMATIC

- ★ NO INSTALLATION COST — NO SPRINKLER HEADS IN THE LAWN
 - ★ EVEN DISTRIBUTION — GROWS BETTER TURF — SAVES WATER
 - ★ EACH UNIT A SELF-CONTAINED AUTOMATIC SYSTEM
 - ★ WATERS UP TO 3 ACRES A DAY AUTOMATICALLY
 - ★ COVERS AREA 600 FEET x 100 FEET AT ONE SETTING
 - ★ SEND FOR LITERATURE TODAY
- SOLD THROUGH LEADING POWER-MOWER DEALERS



TRAVELRAIN
POWER SPRINKLER CO.

362 NORTH CANON DRIVE
BEVERLY HILLS, CALIFORNIA

GOLF DOTS AND DASHES

EUGENE "Skip" Wogan, (Essex County CC) president of the New England PGA section, casts a dissenting vote against all the recent talk directed against reducing the number of sand traps. Says "Skip": "I have long maintained that the best value of sand around greens is that it sets them off. They are definitely defined as targets, and that should help the golfer rather than handicap him with a thought of mental hazards . . . Sand hazards, properly placed . . . and by that, I mean visible to the golfer playing the hole . . . enhance the beauty of a course." . . . The 100-acre Morell estate at Northport, L. I., has been turned into a public golf course; W. N. Morell and his family operate the 18-hole layout.

James C. Downes, Mahoning CC (Girard, Ohio) greenkeeper, has his course in top shape for the annual Mahoning Open to be played June 13-15. Prize money for the event has been increased to \$5,000 this year. . . . Annual two-day educational sessions at the Arlington Turf Gardens, sponsored jointly by the USGA Green Section and the GSA, will be held September 22-23. . . . A new greens watering system is

now in operation at the Americus (Ga.) GCse; a 244-foot well has been drilled near the clubhouse and a pressure tank and pump installed.

Quite a few Chicago district golfers availed themselves of Braniff Airways service to attend the National Open at Fort Worth beginning June 5. Arrangements for tournament travelers, including hotel reservations, were handled by L. R. Fimian, Chicago district traffic mgr. . . . Frank Tulley, better known as 'Pop' Tulley, for years manager of the Country-side Golf Club, Mundelein, Ill., died May 2 at the age of 68. Mrs. Tulley and son Harold will continue to operate the course. . . . Rut Coffey, playing Tourneys, recently went around the Fountain Head CC (Hagerstown, Md.) course in 62, breaking the former record by 3 strokes. Par is 71, the course measuring over 6,300 yds. His card included 9 birdies and 9 pars. . . . Bobby Cruickshank has been re-elected president of the Virginia Open Golf Assn.

Gunnard Johnson, Westwood Hills (Minneapolis district) pro, lost 21 pounds this spring—just teaching golf. . . . Re-

STANDARD Golf Course EQUIPMENT

"BEST UNDER
THE SUN FOR '41"

- "Tru-View" fast color wool and cotton Flags
- "Quality" seamless steel and wood Flag Poles
- "Aluminum" yardage, Tee, Green, Direction, Regulation and Entrance Signs and Markers
- "One-Piece" Aluminum and Iron Putting Cups
- "Cuts-True" Hole Cutters — Divot and Turf Repairers
- Cup Setter and Extractor
- "Agrometer" Soil Tester
- "Six Ball" Washer . . . Ball Rack and Ball Retriever

Write today for a copy of Bulletin C-41 which gives complete information and prices.

Standard Manufacturing Company
Cedar Falls, Iowa

DOLLAR SPOT?

You can obtain complete, effective, and economical control with

SUPER MINERALITE

—PLUS—

NITROGEN-POTASH FEEDING



Just forget for the moment the weird rumors and stories you may have heard, and apply Super Mineralite at the rate of 4 ounces per 1,000 square feet. 1 to 3 days later, apply 3 pounds 20% sulphate of ammonia and 1 pound 50% muriate of potash per 1,000 square feet—and watch Old Man Dollar do a fadeout.

This method of dollar patch control is safe, sensible, and effective—and coincides with the recommendations of one of America's leading turf authorities.

Super Mineralite also controls the severe attacks of large brownpatch at a maximum cost of 27½¢ per 1,000 square feet—most attacks for half that. Also acts as a corrective on disturbed or unbalanced nutritional conditions that encourage brownpatch or dollar spot attack.

Disregard fantastic hearsay and allow Super Mineralite to do ITS OWN talking on YOUR OWN greens. Ask your dealer, or write Don Young, 68th and Indian Lane, Kansas City, Mo.

AGRICULTURAL INSECTICIDE CO., Inc.
BELLE GLADE, FLORIDA

June, 1941

TIMELY TURF TIPS

LIGHT SUMMER FEEDING BENEFITS POA ANNUA FAIRWAYS

Poa annua is more prevalent this spring than for some years past. Apparently, weather conditions last fall and again this spring favored its development. On many watered fairways poa annua apparently has taken possession and is the predominating grass in the turf.

So far this year growth has been tremendous. But from now on poa is apt to thin-out and may disappear entirely. Then, if other grasses are not present, clover may increase, or crab grass take possession because of reduced competition. That means poor turf and bad lies until poa annua comes back from seed in the fall.

Some greenkeepers believe that loss of poa in early summer can be minimized by light feeding in June and again later on, if needed. They use Milorganite at 200 pounds per acre and sometimes add 25 pounds ammonium sulphate to supply a little immediately available nitrogen. This rate, they contend, will not produce soft grass, and, therefore, does not affect loss of poa annua in wet spells.

Apparently, there is merit to this viewpoint for satisfactory results have followed such a program. However, before adopting the scheme as regular procedure, it should be tested first for a season or two on one or more fairways.

Even on greens which are heavily infested with poa, a little nitrogen is sometimes needed. It stimulates the bent so it will take possession if and when poa disappears. But in this case also, over-feeding must be avoided. Should grass become too soft from too much nitrogen, brown patch may be aggravated.

* * *

If your feeding program is not producing effective results, let our Turf Service Bureau help to devise a better program. Their help, including soil tests if needed, is free for the asking. Write:

Turf Service Bureau

THE SEWERAGE COMMISSION

Dept. B-6

Milwaukee, Wisconsin

MILORGANITE for BETTER TURF



PERFECT GREENS AND FAIRWAYS ALL SUMMER LONG

Every golf course looks fresh and green in the spring. But there's only one way to guarantee your course looking the same all summer long . . . with Skinner System of Irrigation!

Take advantage now of the Skinner System Planning and Engineering Service . . . it's available to any Golf Club considering golf course watering. Write for free catalog No. 437-A, and ask for details of our service.

THE SKINNER IRRIGATION CO.

415 CANAL STREET

--

--

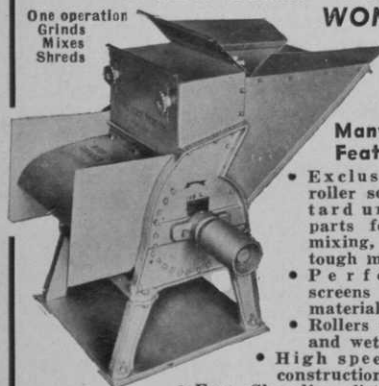
--

TROY, OHIO

PERFECT COMPOST

with this NEW Better "WICHITA WONDER"

One operation
Grinds
Mixes
Shreds



Many Big Features

- Exclusive rigid roller screens retard unground parts for better mixing, tears up tough material.
- Perforated screens for dry material.
- Rollers for damp and wet compost.
- High speed, heavy construction.
- Easy Shoveling distance into hopper.

The new "Wichita Wonder" grinds, shreds or chops to any degree of fineness—any material—any condition, wet or dry. Mixes all materials perfectly. This new model, by simple adjustments, grinds fine enough without screening, or is quickly adjusted for coarse shredding and piling. Sturdy construction for long, trouble-free use. Low power, high speed, big capacity—the new "Wichita Wonder" meets every compost grinding need. Write for NEW, illustrated catalog and low factory prices.

W-W GRINDER CORPORATION
DEPT. D WICHITA, KANSAS

cent pro appointments: A. E. "Bert" Wilde at Valparaiso (Ind.) CC; Joseph Lawton at the Brockton (Mass.) CC; Alex Arnold at the Flagler Hotel CC, South Fallsburg, N. Y.; Don Shetter at the Black Hawk Hills CC, Rock Island, Ill.; Nelson Zimmerman at the Baldoc course, Pittsburgh district; Andy Spann at Spring Meadow club, Allaire, N. J.; Armand Farina at the Battenkill CC, Greenwich, N. J.

Fire, believed to have been started by a defective flue, levelled the Bellows Falls (Vt.) CC clubhouse May 12. Nick Gianferante, pro, his wife, father, and 4-year-old son fled the burning building safely, but lost all their personal belongings. Loss of the clubhouse was estimated at \$15,000. Gianferante, who took up his duties at Bellows Falls April 26, lost \$3,000 in new golf equipment, plus \$700 in personal belongings.

Al Jamison, Bradley Hills (Washington, D. C.) pro, is a recent bridegroom. The bride is the former Mildred Huddleston of Baltimore. The wedding took place May 3. . . . New GSA examining boards, for convenience in interviewing applicants for GSA memberships, have been created in the Cleveland district, Frank Ermer, chairman, and in Indiana, Carl Bretzlaff, chairman. . . . GSA member Fred Coulson, Roseland CC, Ontario, Canada, has given up greenkeeping to

Golf is a GRIN BUSINESS



THAT GRIN YOU SEE when a customer hits an LL-Penfold-75 means you've made a friend for life. He'll be back to you for more of these famous long distance balls because Penfold Golf Balls are sold exclusively through professionals. Play a Penfold yourself. Stack it up against any other golf ball made and you'll grin too. And there's a Penfold Golf Ball in every price range, from the Penfold-35 at three for a dollar to the deluxe Penfold Autograph, golf's luxury ball.



PENFOLD

World's Premier Golf Balls

LL-Penfold-75 ..75¢ Penfold-5050¢
 LT-Penfold-75 ..75¢ Penfold-35...3 for \$1
 Penfold Autograph...\$1

SOLD EXCLUSIVELY THROUGH PROFESSIONALS

Joe! THE GREENS ARE GETTIN' BROWN PATCH



ORDER FUNGÖL

THE GREAT MULTI-CHEMICAL FUNGICIDE AND VERMICIDE

Fungol has long been recognized for its extra chemical properties for Large and Small Brown Patch, its very large covering capacity, safety and soil retention qualities.

Take these important points into consideration when you select a fungicide for your costly greens.

If you want to be sure of real service and economy in your Brown Patch problem, demand Fungol.

Fungol is so very different from ordinary fungicides you will be amazed at its performance. Low cost alone is sufficient reason for your using this super-strength turf conditioner.

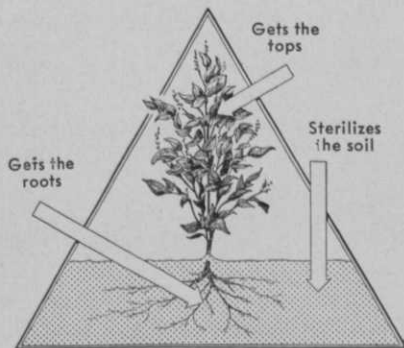
Fungol has won hundreds of customers by its special chemicals supplied at no extra expense for combatting Earthworms, Sod Webworms, Cutworms, Grubs, etc.

Send for free testing sample, literature and new low prices today.

McClain Bros. Co.
Canton, Ohio



DOLGE WEED KILLER



- Rids walks, drives, tennis courts of vegetation
- Keeps sand traps weed-free
- Kills poison ivy, thistles, burdock, vines, etc.
- Kills large weeds without injury to fairways

One easy application of super-strength Dolge Weed Killer keeps weeds out for the entire season. Send for details of sprinkling and injection methods contained in our FREE Maintenance Manual.

The C.B. Dolge Co.
Westport, Conn.

BUCKNER

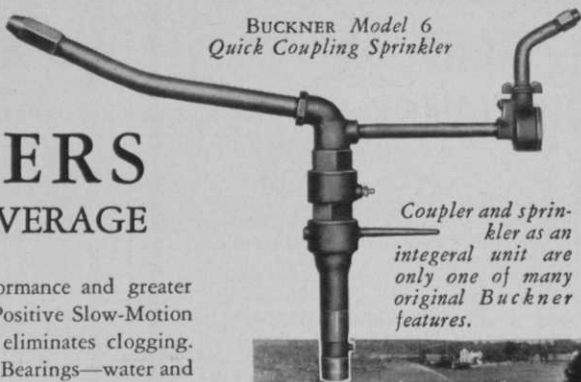
Quick-Coupling

SPRINKLERS

FOR COMPLETE COVERAGE

•For longer life, finer performance and greater economy, investigate NOW! 1. Positive Slow-Motion Control. 2. Self-Cleaning Head eliminates clogging. 3. Sand-Proof, Lubricated Double Bearings—water and grit never touch wearing surfaces, assuring long, trouble-free operation. In use on thousands of acres of hundreds of leading golf courses. Backed by over 25 years of experience and research. Write TODAY!

BUCKNER Model 6
Quick Coupling Sprinkler



Coupler and sprinkler as an integral unit are only one of many original Buckner features.



BUCKNER MANUFACTURING CO.

FRESNO, CALIFORNIA

7658 Calumer Ave.
Chicago, Ill.

7280 Melrose Avenue
Los Angeles, Calif.

NELSON

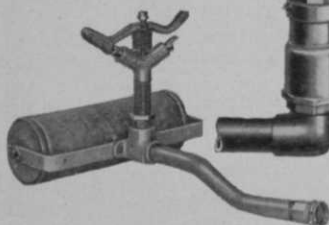
Sprinkling Equipment

"Silver Top"
Quick Coupling
Valves
Rain Bird and Lark
Sprinklers

Send for new
catalog

**L. R. NELSON
MFG. CO.**

PEORIA, ILLINOIS



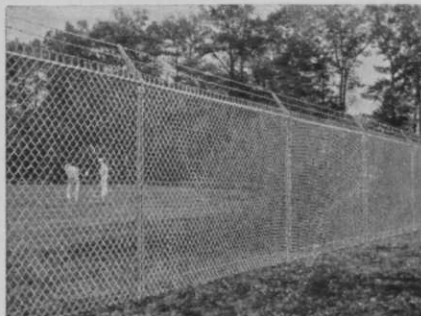
become an instructor of pilots for the RAF.

Charles "Tex" Harvey has been named head greenkeeper of all Indianapolis municipal golf courses. . . . Andrew Peck is the newly elected president of the Western Michigan Greenkeepers Assn. Andy is located at the Battle Creek CC. . . . Winnie Cole, pro at the Vicksburg (Miss.) CC, is the proud father of an 8-lb. boy. . . . Jack Metz, formerly at the Plymouth (Ind.) CC, is now pro-mgr. at the Greeley (Colo.) CC. . . . Victor C. Crocker is once more managing the Manor CC in the Washington, D. C. district. . . . Harry Magill, formerly manager of Algonquin GC near St. Louis, has been appointed mgr. of Glen Echo CC of the same city.

Earl S. Paswaiter of the department of Americanism office of the Veterans of Foreign Wars, Department of Indiana, is quoted by the Indianapolis Chamber of Commerce as asking for creditors of the VFW golf tournament held in 1935 to advise him of any unpaid indebtedness, as the VFW is planning payment of all obligations. The PGA made good on prize money not paid off by the VFW at that tournament, so is in line for a refund. . . . Denver will be host to the Women's Transmississippi for the third time when the 1942 Women's Trans is played at the Denver CC. . . .

PAGE FENCE

America's First Wire Fence - Since 1883



KEEP STRAYS OUT—MONEY IN

★ Page fenced golf clubs enjoy privacy, protection and profits. They draw the highest class membership—keep out trespassers—gain revenue from tournaments and exhibitions. And they get a plus value in a longer life fence, engineered and erected by a locally-owned, factory-trained firm. Write for book, "Fence Facts," containing information on Page's stronger Winged Channel Posts and other quality features. Address PAGE FENCE ASSOCIATION, Monessen, Pa., or Bridgeport, Conn., New York, Pittsburgh, Atlanta, Chicago, San Francisco.

A PRODUCT OF PAGE STEEL & WIRE DIVISION
AMERICAN CHAIN & CABLE COMPANY, INC.

TURFOLUX

LET'S DECLARE
WAR TODAY ON
BROWN PATCH!

TURFOLUX Special is your heavy artillery for the perfect barrage against this enemy. It's the blitzkrieg against brown patch. Don't wait for this enemy to attack your greens. Set up your big guns and tanks and use TURFOLUX Special—the all-purpose fungicide—for your ammunition. Get into the first line of defense with many satisfied users of TURFOLUX Special—the multi-element turf fungicide. The plus fungicide that corrects nutritional disturbances and prevents brown patch. TURFOLUX Special's effectiveness and low cost per treatment will surprise you.

5 lbs.	\$ 7.50
25 lbs.	33.75
100 lbs.	130.00

DEALER INQUIRIES INVITED

AMERICAN HYDROLIZER CO.

Elmhurst Illinois



Smart

FOLDING FURNITURE

... For Club Use

... For Prizes



Lyon Steelart Folding Tables and Chairs are gracefully proportioned and attractively finished in a variety of color combinations. Chairs are

exceptionally comfortable. Table top is upholstered to give a fine playing surface for card games. Durable and stain-proof. Leg locking device prevents accidental collapsing . . . makes table ideal for emergency service in dining room or grill. Both Steelart Tables and Chairs make highly acceptable golf or bridge prizes. Write for full details.



LYON GOLF LOCKERS

Give extra years of quiet, trouble-free service. Sizes and types for every need and budget. All types have many distinctive features. Help promote locker-room comfort. Send for catalogue.



LYON

METAL PRODUCTS, INCORPORATED

General Office:

3406 MADISON AVE. AURORA, ILL.

Branches and Distributors
in All Principal Cities

"PABST PLEASES PARTICULAR PEOPLE"



...so it's **"33 to 1"** this special treat
will please your club members!

• Pabst Blue Ribbon Beer brings your members an *outstanding treat* they're bound to enjoy: a BLEND of 33 fine brews to make *one* single glass.

Pabst Blue Ribbon is a beer closely associated with the atmosphere of good fellowship and gracious living that a wise club manager endeavors to maintain. You can make *your* members feel "at home" by serving the beer that's first choice in America's Homes . . . Pabst Blue Ribbon!



... with a Blue Ribbon on it

... in full or club size bottles, handy cans, or on draft.

Copyright 1941, Pabst Brewing Company, Milwaukee

33 Fine Brews Blended to Make **ONE** Great Beer

... It's Smoother ... It's Tastier ... It Never Varies

JUNE, 1941

Why Central Control Brings Efficiency In Management

By LEONARD MATTSON

General Manager, Keller Golf Course, St. Paul

One of the principal, though generally unspoken, objections to the general management plan in golf club operation, is fear that the other guy'll get the job as boss.

Pro and greenkeeper, in numerous instances, have their fingers crossed for fear the manager will become general manager and hard to get along with.

But, on the other hand, there's no law against a pro or greenkeeper becoming general manager in case he's qualified to handle the increased responsibilities of the job. Pros and greenkeepers are successful as general managers under the centralized control system that is spreading among golf clubs.

Leonard Mattson, successful as the general manager of St. Paul's famed municipal course, Keller, highlights some of the points a pro must bear in mind should he be ambitious to handle general management responsibilities.

This article gives the highlights of Mattson's talk at the Minnesota clinic.

MORE efficient management of golf clubs lies in the establishment of centralized control. I believe that the golf professional is the key man in this set-up.

Every successful business or organization of any kind is run on sound business principles and its control is centralized. A golf club to be operated successfully must follow this same general pattern.

Too many clubs today are guided by a system carried over from an era of better times, when a club could meet an operating deficit by assessments, and before the public courses were raised to their present high standard.

We know that a good many clubs have failed and a good many more are in unhealthy financial condition today because of unsound business practices. I think the first clubs to establish the centralized management policy were the small town clubs, where the economic pinch was felt first and where adjustments could be made faster because of more modest plants.

A man for this centralized management work must have certain definite qualities; qualities which are demanded of any good business man or manager. He must be an organizer and an executive. He must maintain good personal appearance, be pleasant, tactful, and diplomatic, and he must have at least a general knowledge of each department. He must have a sense of values gained from experience at a golf club and he must be able to correlate the various departments and see them as a unit.

This centralized control has existed in many clubs in an unofficial manner. We all know of clubs where some person, usually an old retired member with business ability and an extensive knowledge of golf, virtually managed the club in a very efficient manner, merely as a hobby or because of his love of the game. Clubs which possess such individuals are very fortunate indeed. But at the majority of clubs, officials do not have the time or

Sleepy Hollow CC (New York Met. district) put on a unique afternoon of golf May 15 when members 'competed' with Horton Smith in an 18-hole handicap event. Publicizing the event with the words (printed on lively two-color posters) "Want to play against Horton Smith?", Sleepy Hollow members posted their scores, with full handicaps, against Horton's hole-by-hole score. Prize was awarded the member who beat Horton by the widest margin.

the experience necessary for the co-ordinating of the various functions of business management.

It behooves the professional, because of his knowledge of golf, his love of the game and because his welfare is dependent upon the progress of the game, to take a vital interest in the financial stability of his club. He should make himself indispensable in his own department and look for new ideas that will be of help to his club. Then in visiting and playing other courses, he should study the practices that are maintained at the better managed clubs so if his club adopts this progressive move, he will not be unprepared.

Good business management is predicated on two general phases: to increase the number of golfers in addition to holding the ones we have by making conditions as pleasant and enjoyable as possible, and to see that the golf dollar is wisely spent.

In regard to the first point I think the golf promotion program in reaching students in schools and colleges and the encouragement of juniors and caddies has done a good deal. The surface has only been scratched. And with the great health movement being organized, a great many people will be attracted to golf because of the pleasant exercise it affords and because, due to the handicap feature, members of both sexes and of every age group can play on equal terms.

Without pretending to set myself up as an authority but merely as a basis for comparison, I shall outline briefly some of the practices I employ as general manager of my club.

We operate from a budget. In arriving at that budget we try to conservatively estimate what our income will be for the following year. Then we try to allocate the funds equitably to the various departments. There is the administration department which covers the business manager and certain other expenses. Then

there is the operation and maintenance of the course.

The operation covers the professional, assistant, caddiemaster, ranger and miscellaneous small supplies. Maintenance covers the greenkeeper and all the labor and materials such as fertilizer, seed, water, electric power, new equipment and repair of old, fungicides, gas and oil, paint, and various other items. Then the labor item is distributed over greens, fairways, tees, rough, traps, trees, nursery and tournament expense.

Then we have the operation and maintenance of the clubhouse and restaurant. This includes the help, fuel, light, all the supplies, repairs to building and equipment and many other items.

In addition most clubs have a general expense fund to cover taxes, insurance, workmen's compensation, social security and amortization charges. At many clubs these charges eat up a third or more of their income.

In going over our records we try to find out how much is spent for necessities and how much for what someone has appropriately called the "trimmings." These trimmings may be listed as swimming pools, tennis courts, archery ranges, bowling greens, and that part of the clubhouse other than the restaurant and locker room.

These things are nice to have, provided they are not had to the detriment of the golf course, because we presume that a person joins a golf club primarily to play golf.

In regard to the golf course, without lowering our standard we have effected savings of about \$1500 a year by adopting power equipment. By an intelligent fairway fertilization program we figure we save \$500 a year in water and electric power. Also by sodding certain sand traps we save about \$300 yearly in sand and maintenance.

I agree with many others that the converting of certain severe sand traps to grass bases should be done. It will make the game a little easier for the average golfer because most sand traps are a nightmare to him; whereas we know for the good golfer, getting out of say a 3-inch rough, presents more difficulty than getting out of sand.

A person plays golf for pleasure, exercise, relaxation and sociability. Good business management of the golf club will do much in providing him with these wanted values at reasonable cost.