



ACUSHNET EXPANDS NATIONAL DEFENSE FOR PRO-SHOP PROFITS

New Bedford, Feb. 1, 1941 — Golf pros in all parts of the country are now to enjoy complete price protection on all Acushnet Golf Balls. In line with Acushnet's long-established policy of selling balls through pro shops, the company this year will take advantage of the new Fair-trade legislation* on price maintenance to guard the pro shop against price-cutting by bootlegging retailers.

The new laws make it plain that if one outlet, in a state having

passed this legislation, promises to sell at prices agreed, it sets the price level to which all outlets must hold or be liable to court action.

Already pros in forty-four states have signed such agreements with Acushnet . . . thus protecting all their brother pros in those states. Naturally, this plan has been received with tremendous enthusiasm by pros everywhere, who see in it a guarantee (with teeth in it) for larger volume and better profits.

★ Necessary legislation not yet in force in these states: Delaware, Missouri, Texas and Vermont.

ACUSHNET

GOLF BALLS

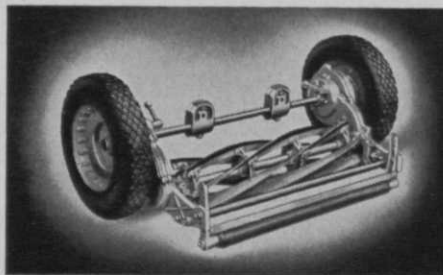
TITLEIST, 75c BEDFORD, 75c GREEN RAY, 50c PINNACLE, 35c
Acushnet Process Sales Company, New Bedford, Mass.

BIG MONEY WINNERS USE THE BEST EQUIPMENT



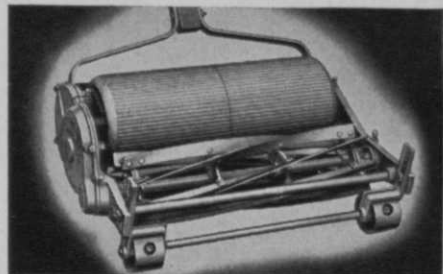
Successful golfers and successful golf clubs have one common characteristic—both use the best equipment available. Those clubs that attract the greatest number of playing members are the ones that maintain well kept fairways and true, fast, ribless greens *at all times*.

It's not just a coincidence that more and more of the country's outstanding courses are being equipped with Pennsylvania mowers. It's because Pennsylvanias have been *proved* the most efficient—the most economical. The units pictured below are but two from "The World's Most Complete Line of Lawn Mowers."



Pennsylvania DeLuxe Fairway (35 or 30 Inch Sizes)

The 35 inch size effects a saving of 20% in time and labor over the conventional 30 inch size. Both sizes unbreakable malleable iron construction. 6 heavy crucible analysis steel blades. Timken roller bearings. Casting, with reversible raised edge lower blade attached, is removable without dismantling mower. Train of gears on *both* sides. Pneumatic tires optional.



Pennsylvania Super-Roller Greensmower

High speed cylinder. 8 crucible analysis steel blades—oil hardened and tempered. Train of 3 cut gears, running in grease, in dust-tight case. Castor wheels mounted in hardened steel bushing, Alomite lubricated.

Send for this
New 1941 Catalog



PENNSYLVANIA LAWN MOWER WORKS
PRIMOS, DEL. CO., PENNA., U. S. A.

Prepare
for Golf's
Greatest
Year!

Pennsylvania

QUALITY LAWN MOWERS



You Are Invited

... to visit Skinner System Booth No. 29 at the Green-keeping Superintendents Equipment Show at Detroit, Michigan, February 4, 5 and 6, 1941.

See the comprehensive line of sprinklers and valves. Examine the 1941 improvements and developments found exclusively in Skinner System equipment.



THE SKINNER IRRIGATION COMPANY, 415 Canal Street, Troy, Ohio

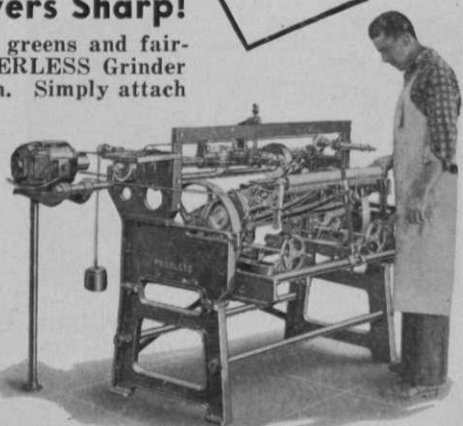
PRIZE WINNING GREENS AND FAIRWAYS



Peerless Grinder Keeps Mowers Sharp!

Are you satisfied with the condition of your greens and fairways? If not, look to your mowers. A PEERLESS Grinder will keep all cutting units in perfect condition. Simply attach to light socket—easy to operate—accurately sharpens all types of mowers, power mowers and tractor units in half the time required by ordinary methods. Users include many of America's largest and finest clubs. Send post card today for free bulletin and prices.

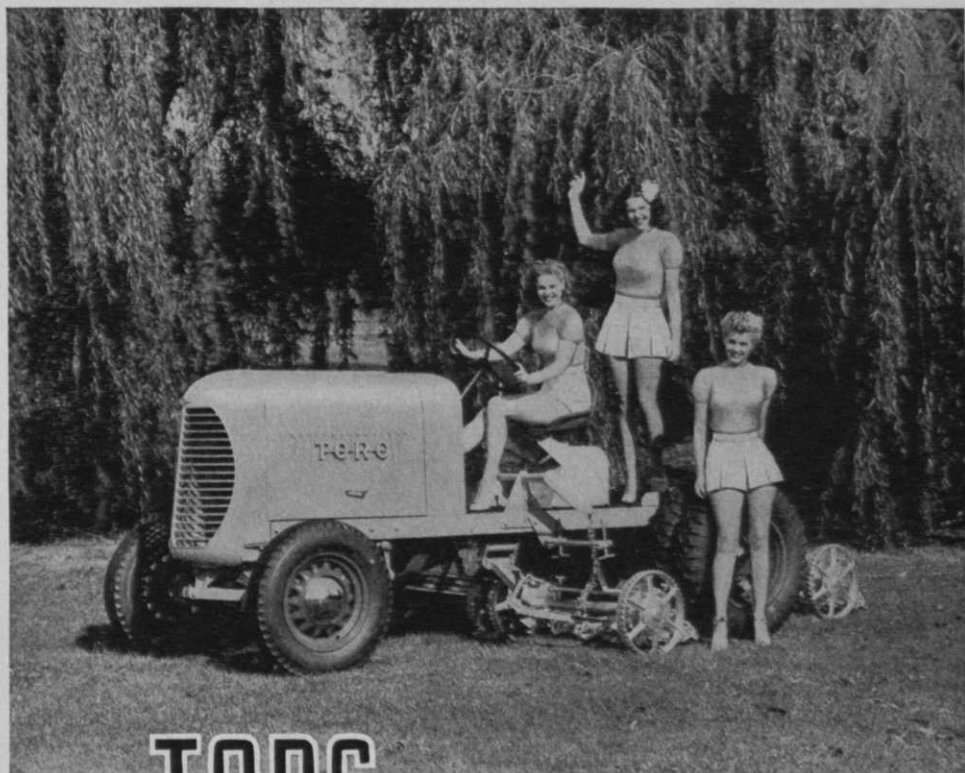
THE FATE-ROOT-HEATH CO.
401 BELL STREET • PLYMOUTH, OHIO



Manufacturers of the
SILVER KING
GOLF COURSE TRACTOR



SEND POST CARD FOR FREE BULLETIN!



FOR **TOPS** IN PERFORMANCE

YOU CAN'T BEAT **TORO MACHINERY**

DOWN through the years Toro Tractors and Gang Mowers have made an outstanding reputation for fine performance on thousands of golf courses from Winnipeg to Buenos Aires and from Honolulu to Boston.

For 1941 the Toro line is the strongest in history. Three types of tractors, two beautiful Fairway Mowers, the old reliable Hand Greensmower, and two smooth-cutting Power Greensmowers, along with the Professional and Starlawn general purpose mowers.

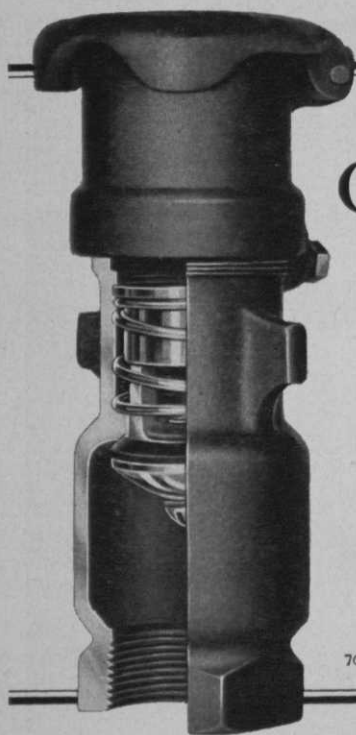
If you are in the market for mowing machinery this year, by all means write for our beautiful 1941 catalog.

TORO MANUFACTURING CORPORATION

MOWING MACHINERY SPECIALISTS FOR OVER 20 YEARS

MINNEAPOLIS

MINNESOTA



BUCKNER Quick-Coupling Valves

Give You Perfect Control
of Water Consumption

- They are provided with Built-in Flow Control, enabling the operator to compensate for any increase in pressure.
- They are Self-Closing when the coupler is removed, absolutely preventing any leakage.
- They are Grit-Proof, Repackable under Pressure, Safe and Long-Wearing.
- They represent the result of over 25 years' manufacturing experience.
- Write us TODAY!

BUCKNER MANUFACTURING CO.

7658 Calumet Ave.
Chicago, Ill.

FRESNO, CALIFORNIA

7280 Melrose Avenue
Los Angeles, Calif.

SPIKE DISC

*For Economical Maintenance
of Fairway, Green and Lawn*



No. 18
WITH SPECIAL
HITCH FOR
TORO TRACTOR



For best results, Spike-Discs should be used before re-seeding, fertilizing and top dressing. By light sprinkling after use, the seed and fertilizer are settled into the perforations and not washed away by flooding rains or high winds.

Cultivation and aeration of lawns, greens and fairways in one simple operation? Yes, thoroughly and at low cost, too, when you use SPIKE-DISC. For SPIKE-DISC is

as easy to operate as your lawn-mower. Its knife-like blades do not leave ugly holes as do old style implements with

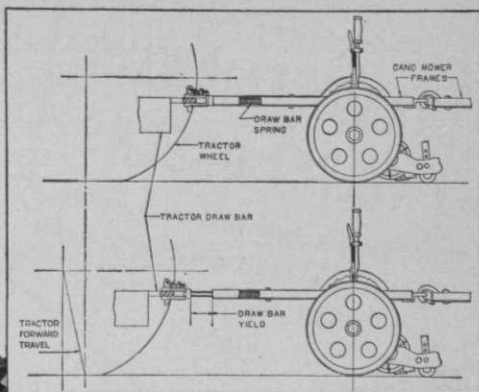
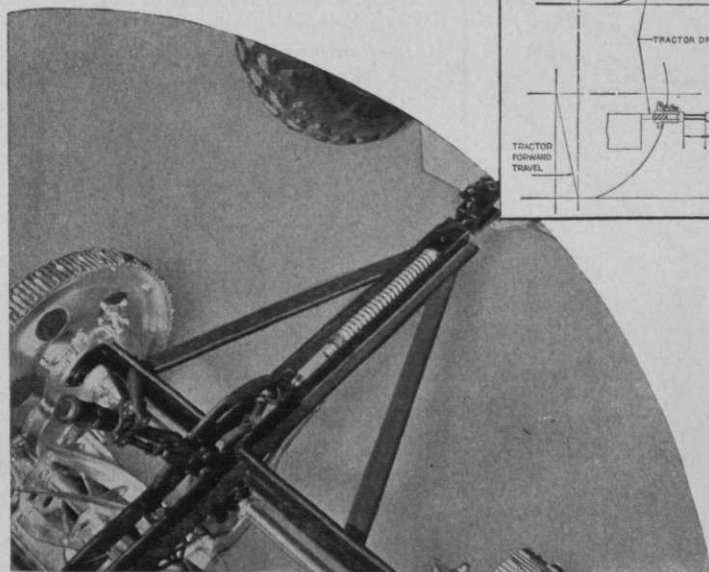
square or round spikes, but cut unnoticeable slots to the root areas.

GENERAL SALES AGENTS

JOHN H. GRAHAM & CO., Inc.
105 DUANE STREET, NEW YORK, N. Y.

Also Dunham Water-Weight Lawn Rollers

Gang Mower frame tractor hitch shows Spring Draw Bar which functions to your advantage as shown in diagram opposite.



When tractor and gang mower stop during course of operation, to start again requires moving a dead load with the added resistance of uncut grass. Diagram shows draw bar yield allowing tractor wheels to move forward, gaining momentum before taking up full load, thus preventing tractor wheel slippage and injury to turf.

NEW Worthington patented **Draw Bar Spring** prevents turf injury by a smoother start with any tractor

The new Worthington Cutting Unit with its wider and harder blades, and Gang Mowers have been acclaimed, after last season's performance, as the best in quality and as giving the finest cut of any equipment in this field.

Now, for 1941, we have added the Spring Draw Bar feature which was formerly a part of the tractor itself. It is now built into the famous Worthington

Gang Mower frame so that its advantages in smoother starting, preventing turf injuries due to slippage, is available to all Worthington Gang Mower users regardless of make of tractor used.

New frame sections with this feature are available for replacement on any Worthington Gang Mower now in service.

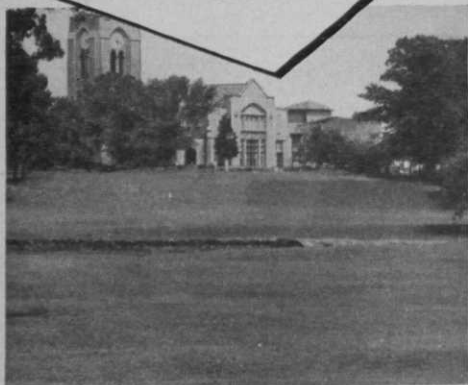
Write us, today, for full information.

WORTHINGTON MOWER COMPANY

MAIN OFFICE: STROUDSBURG, PA. • SALES AGENCIES: ALL PRINCIPAL CITIES

**HARDY FAIRWAYS,
VELVET GREENS**

They come fast and easy
when you feed Swift's Special
Golf Fertilizers and
Vigoro!



Olympia Fields Country Club, Olympia Fields, Ill., used over 174,000 pounds of Swift's Special Golf Fertilizer in the care of their four beautiful eighteen-hole courses in 1940.

● For healthy turf and smooth, true greens, a deep, extensive grass root system is absolutely essential.

Swift's Special Golf Fertilizer and Vigoro assure that. They result from years of research work and practical experimentation in developing exactly the right kind of *balanced nourishment* for grass. These superior fertilizers have *proved* themselves on famous golf courses all over the country. Applied *early*, they'll help have your course in top notch playing condition when the season opens.

An expert Swift representative will be glad to study *your* soil . . . recommend the exact fertilizers to give you best results.

**SWIFT'S SPECIAL
Golf Fertilizers and**

VIGORO

Complete plant food

A PRODUCT OF SWIFT & COMPANY

GOLF DIVOTS OF THE MONTH

ED "Porky" Oliver has returned to the golfing wars, after making a quick trip east in response to an urgent call from his draft board in Wilmington, Del. Oliver, who has been deferred because of his status of sole support of his parents, had the following to say about what the draft would do to a pro golfer: "Army life would be the ruin of a pro golfer unless, of course, he was fortunate enough to be assigned to a Southern camp where he might use any leisure hours to hit out practice shots and try to keep his edge." . . . E. E. Van Meter, pro at Troy (Ohio) CC, on Jan. 14, was attacked and beaten by thieves when he chanced upon them while they were ransacking the clubhouse. Van Meter, while receiving severe bruises, was not seriously injured.

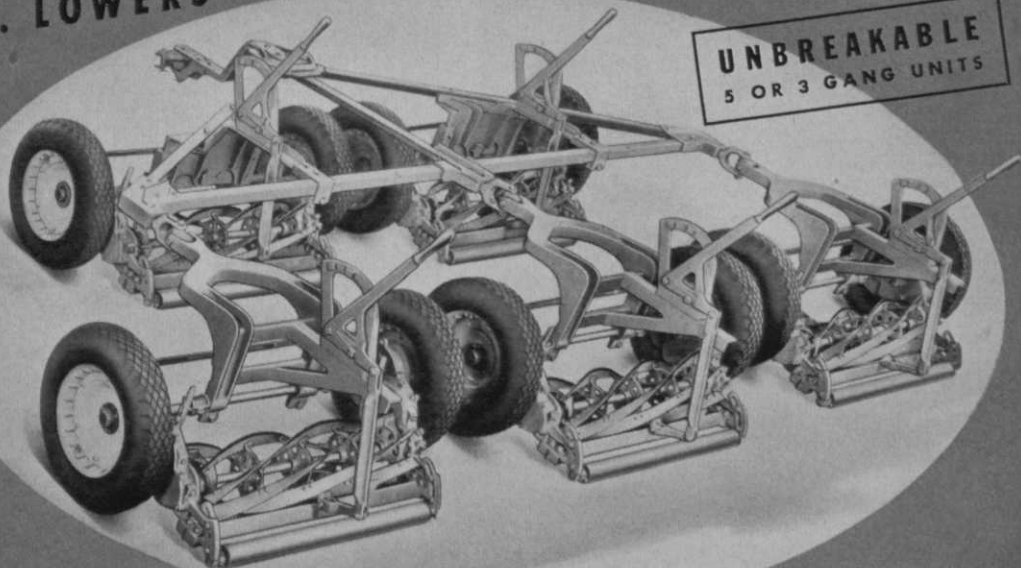
Old Dominion GC, Newport News, Va., has announced plans for the construction of a new 18-hole course. The club was forced to vacate its present site when the city annexed the property preparatory to beginning construction on housing facilities for the national defense program. . . . Robert Bruce Harris, golf architect, has been selected to lay out 9 new holes at the Janesville (Wis.) muni course. . . . One of the hockey centers in New Jersey is the Essex Fells CC where Billy Lynch, assistant pro, and Albie Leitch have developed the "Comanches."

A remodeling program at the Evansville (Ind.) CC, to cost \$45,000, has gotten under way and will be completed by early April. The entire clubhouse will be remodeled, enlarged and decorated. . . . In a move to establish closer and more cordial relations with the people of San Bernardino, Calif., Arrowhead Springs hotel officials recently offered to give its country club and golf course to the community. Erec-

Scores Best Both Ways

1. LOWERS COSTS 2. IMPROVES FAIRWAYS

UNBREAKABLE
5 OR 3 GANG UNITS



NEW F & N FAIRWAY MOWER

● It scores best because it's engineered and built so well. Has many patented features to bring your mowing costs down to a minimum. All the result of more than 50 years' experience in building precision grass-cutting equipment.

It scores best because it does such a fine job. Wins praise for you from all who play your course—praise for fairways so beautifully cut. From every standpoint, here is a champion—on the fairways of golf courses from coast to coast—a really dependable performer. You can rely upon it year after year . . . Many improved and patented features make the new F & N fairway

mower a perfect performer, the experts say. Features such as self-adjusting roller bearings for the heavy-duty revolving reel, that always stay in perfect alignment—demountable reel and interlocking cutter bar. And numerous others. All to insure the most dependable operation at the lowest possible cost to you.

To keep old or inadequate equipment on the job, it costs you money for labor and repairs. Decide now to apply that money on the purchase of this new and modern equipment—and save money . . . Available with or without pneumatic tires. Mail coupon for information, prices.

F & N LAWN MOWER COMPANY, RICHMOND, INDIANA

Mail This

FOR FULL

INFORMATION

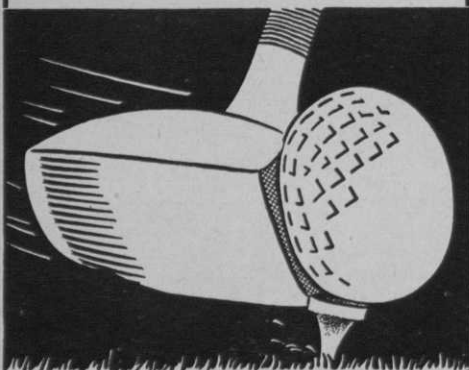
Please send me, without obligation, full information and prices on F & N Fairway Mowers.

Your name

Club Name

Address

How well this ball will travel depends a great deal on how it is hit. . .



Similarly how well your greens fare depends on how well they are protected.

For maximum turf protection at minimum cost, many greenkeepers prefer **MERCK 2-1 MIXTURE**. It is effective, dependable, economical. It can be applied by either wet or dry application. It is of special fineness ensuring thorough and even distribution.

★ *Other Merck Products* ★
for the Greenkeeper

TURFCALOMEL—A complete turf fungicide that is unusually popular with many practical greenkeepers.

CORROSIVE SUBLIMATE—Conforms to U.S.P. requirements. It is quick-acting. It is highly efficient as a remedy and preventive for large brown patch.

CALOMEL—Preferred when long protection is desirable and rapidity not essential.

MERCK & CO. Inc. RAHWAY, N. J.
Manufacturing Chemists
NEW YORK PHILADELPHIA ST. LOUIS
In Canada: Merck & Co. Ltd., Montreal and Toronto

tion of a \$15,000 clubhouse was the only major obligation asked. . . . Joe Valentine was recently elected to his third term as president of the Philadelphia Assn. of Golf Course Superintendents.

Officers of the Central Ohio Greenkeepers Assn. for 1941 are: pres., Glen Van Voorhis; vice-pres., John McCoy; secy-treas., Bob Williams; state director, Mac Parsons. . . . Immediate construction has been ordered on a new \$50,000 clubhouse at the Stockdale (Calif.) G&CC. This building will replace the one which burned last July. . . . Eddie Kirk, pro at the Glen Oak club in the Detroit district, has taken his physical examination and will probably become the first of Detroit's leading golfers to be taken under the Selective Service Act. . . . Clubhouse at the Topeka (Kans.) CC burned the night of January 2, with \$10,000 damage resulting. Members had not decided at this writing whether to repair, or build new clubhouse.

The GSA is organizing a speakers bureau, and is appealing to all who can speak on a given turf subject to have their names listed with the association. . . . L. B. Sipe of Broadmoor CC, has been elected president of the Oregon-Washington Greenkeepers Assn. . . . Carl "Gus" Hook of Mount Pleasant, Baltimore muny layout, has been named new president of the Mid-Atlantic Greenkeepers Assn. . . . Frank Maples, Pinehurst, N. C., superintendent, is making a fine recovery from a recent illness. . . . Lincoln (Nebr.) CC is planning a \$10,000 remodeling job that will include furniture replacements, a new kitchen, room rearrangement and general decoration.

Johnny Malutic has been named pro at the Hawthorne CC, Cleveland. Malutic, unattached since he held the pro position at the Mahoning CC two years ago, succeeds Luke Ross, who recently resigned. . . . There has been wholesale turnover in the pro jobs at Indianapolis district clubs since the '40

This is the
NEW LEWIS
paddle-type
Golf Ball WASHER



Beauty, plus Efficiency, plus Low Cost

This new Lewis Washer is the tried and proven paddle-type — all dressed up in a brand new design on the outside and with several new operating features on the inside. Like its predecessor the patented slot in the paddle does the trick. With just a few strokes, every bit of the surface is scrubbed clean and white. The ball is rotated so that the entire periphery is exposed to the cleaning action of the brushes. Springs on the back of the brushes keep a uniform pressure of bristles against the ball.

Price each, \$6.00 11 or more each, \$5.50

SPECIAL TRADE-IN ALLOWANCE

We will allow you \$1.00 on each old washer you now have (regardless of make) on the purchase of this new washer — Write for details.

LEWIS Multi-Ball Roto Washer

Just feed dirty golf balls into the opening — turn the crank — and out they pop — clean, sparkling and white. Unique construction eliminates troublesome gears. The long wearing circular brush has an aluminum back to prevent warping and a constant pressure is kept against the ball by a coil spring. A drain plug at the bottom of the aluminum case facilitates cleaning. Price each, \$18.00

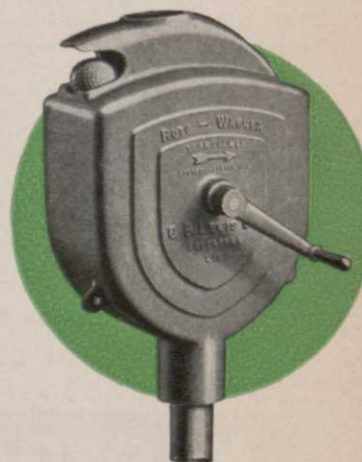
4½ ft. post for mounting, each, \$1.25.

Your Favorite Golf Supply Dealer Sells Lewis Equipment

G. B. LEWIS COMPANY

Dept. G2

WATERTOWN, WIS.



**LEWIS GOLF BALL WASHERS
 AND TEE EQUIPMENT**

TIMELY TURF TIPS

WHY ORGANICS?

Although quick-acting fertilizer is needed in limited quantity, the true organics are the backbone of any sound turf fertilizer program. This is true of greens and tees as well as fairways. And of all the true organics, Milorganite is well out ahead . . . the outstanding leader of the field.

Particularly in spring, the sole use of immediately available nitrogen complicates rather than simplifies maintenance, especially in wet seasons. It is impossible to cope with the combination . . . plentiful moisture and surplus soluble nitrogen. Growth is so rapid that it is practically impossible to keep fairways properly cut, and grass becomes too lush to withstand the rigors of midsummer heat. Even worse is the fact that just before summer starts soil is depleted of its available nitrogen and consequently there is nothing left to nourish the grass. Then growth stops and trouble starts. Grass failure is usually hastened because leaves are soft and lush, due to forced growth from too much nitrogen in early spring.

These troubles can be largely avoided by using true organics, either as the only fertilizer or as the major source of nitrogen. This has been convincingly demonstrated time after time on courses where Milorganite is the principal source of nitrogen. Due to gradual solution of water-insoluble organic nitrogen by natural soil processes, excesses are avoided, and a slower rate of growth prevails always. Grass is more robust, and in June soil still retains a reserve of nitrogen to nourish the grass throughout the summer.

So it is only natural that golf clubs throughout the United States and Canada should become organic fertilizer minded in ever-increasing numbers year after year.

Tell us about your Turf Problems. Write Dept. B-2.

Turf Service Bureau

THE SEWERAGE COMMISSION
Milwaukee • Wisconsin

MILORGANITE
for BETTER TURF

season ended. Changes have been announced at the Meridian Hills, Hillcrest, Lake Shore, and Speedway clubs. In addition, there will be a new assistant pro at Highland G&CC, and it is likely a new pro will be named at the South Grove munny layout.

Denny Shute is making a great comeback on the current winter circuit. On the shelf for many months with an injured wrist, then an appendectomy, Denny has been shooting fine golf in the West Coast tournaments. . . . Jock Cairns, former golf professional at Peoria, Ill., and operator of a golf school there, died Jan. 8 in Long Beach, Calif. Jock had been in ill health for several years. . . . Roy Smith, recently appointed Meridian Hills (Indianapolis district) pro, opened a free golf school for women only, January 29 at the Bush-Feetzle Sporting Goods Co. store in Indianapolis. . . . Ray E. Livermore is the new manager at the South Shore CC (Buffalo, N. Y.). He succeeds Edward Metzger.

A fee of \$3.00 is being charged non-members of the GSA for admittance to the Detroit convention's educational sessions. Club officials of GSA members, however, will be admitted free. . . . Herb Shave, general chairman of the 15th annual GSA convention, was first president of the Michigan-Border Cities Golf Supts. Assn, official convention host. . . . Don Boyd deserves a hand for the fine job done in his capacity as GSA show chairman. There is more exhibit space reserved for the '41 show in Detroit, Feb. 4-7, than ever before.

Connecticut Assn. of Golf Course Supts. 1941 officers are: pres., A. M. Locke, Longmeadow (Mass.) CC; vice-president, Edward J. Casey, Wykagyl CC, New Rochelle, N. Y.; secy-treas., Charles Traverse, Mill River CC, Stratford, Conn. A. B. Longo, Woodbridge Hills CC, Woodbridge, Conn., was chosen asst. secy-treas. Added to the board of directors for a 3 year term was Irving R. Pierson, managing superintendent of New Haven (Conn.) Municipal GC.