

HURRY UP!



ONLY A FEW WEEKS TO CHRISTMAS AND THE NEW ACUSHNET GIFT BOXES ARE GOING FAST..

The Sunday morning crowd on the first tee is thinning out. The Greens Committee is having its annual headache about dead leaves on the greens. The 1939 season (and what a season for Acushnet!) is drawing to a close—and orders for the new Acushnet Gift Boxes are swamping us.

Remember, please remember, that the supply of these boxes is limited. We don't want to disappoint any one of you, but we must follow a first-come-first-served policy. So hurry that order along! Send in the coupon below today.



STURDY, durable, covered in rich imitation leather decorated with a reproduction of a famous old golfing print—these new Acushnet Gift Boxes are handsome and handy. After the balls are gone, men will use them for studs or collar buttons on the bureau—for pens, clips, stamps and elastics on the desk—for cigarettes or matches in the study.

You may have them with Titleists or Bedfords, with the name of the lucky fellow who is going to get them, stamped on each ball. In dozens or half dozens. No extra charge for the box or the stamping.

But once again, let us emphasize the necessity of ordering soon—**TODAY!**

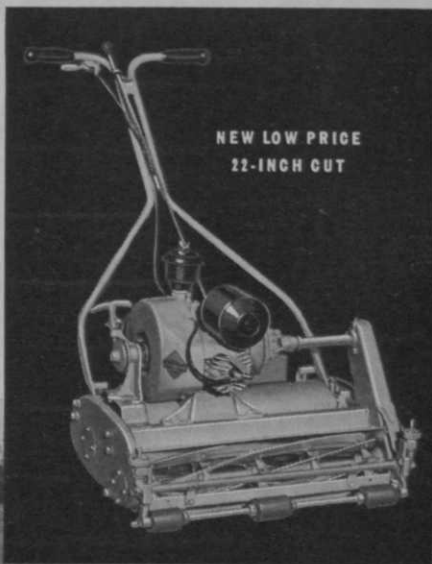
Acushnet Process Sales Company, New Bedford, Mass.
Send Special Gift Boxes at once post paid. Number of boxes and balls indicated below:

boxes (1 doz. balls) Titleist Bedford
 boxes (½ doz. balls) Titleist Bedford

Pro's name _____
 Golf Club _____
 Address _____

ACUSHNET
GOLF BALLS

It's Here!
YEARS AHEAD IN
Performance
Economy
Handling Ease



New
JACOBSEN
POWER GREENS MOWER
LIGHTER
FASTER
MORE POWERFUL

● Make no mistake! Here is *the* big news in putting green maintenance for 1940.

Out of nearly two decades of specialized power mower engineering comes this new Power Greens Mower by Jacobsen—a lighter, faster, more powerful machine—years ahead of the field. Completely new in design from the ground up—yet retaining the best traditional advantages of former models—it represents a revolutionary advance in performance, low operating cost, and handling ease.

But here's the big surprise! With all its superior engineering features, this most modern greens mower is offered at a new low price—far lower than you'd expect to pay for a genuine Jacobsen. Include it in your 1940 budget NOW and enjoy power greens mowing at its best. Write for details.

JACOBSEN MANUFACTURING CO.
RACINE, WISCONSIN

Distributors In All Principal Cities

Jacobsen

PIONEER BUILDERS OF POWER MOWERS

BUCKNER

Quick-Coupling

SPRINKLERS

FOR COMPLETE COVERAGE

•For longer life, finer performance and greater economy, investigate NOW! 1. Positive Slow-Motion Control. 2. Self-Cleaning Head eliminates clogging. 3. Sand-Proof, Lubricated Double Bearings—water and grit never touch wearing surfaces, assuring long, trouble-free operation. In use on thousands of acres of hundreds of leading golf courses. Backed by over 25 years of experience and research. Write TODAY!

BUCKNER Model 6
Quick Coupling Sprinkler

Coupler and sprinkler as an integral unit are only one of many original Buckner features.



BUCKNER MANUFACTURING CO.
FRESNO, CALIFORNIA

7658 So. Calumet Ave.
Chicago, Ill.

7280 Melrose Avenue
Los Angeles, Calif.

OFFICIALS—CONSIDER THESE FACTS BEFORE YOU DECIDE

Roseman Roller Drive Mowers Give You:

1. **BETTER FAIRWAYS**—Turf is improved because Roseman Mowers roll as they cut. This means damaging heat cracks are closed—the turf bed is kept in constant contact with moist sub-soil.
2. **OPERATING ECONOMY**—You can't wear a Roseman out. It's not unusual for clubs to keep Roseman mowers in constant use for 15 years. This means low depreciation—and upkeep and service cost per year per unit averages only \$5.
3. **SIMPLICITY OF OPERATION**—Roseman structure provides higher speed, maximum strength, lightness of pull and better balance.

The new 1940 Roseman Roller Drive Mower not only gives greater economy through larger capacity and longer life, but it brings additional savings in its new initial low cost—the lowest ever offered on a roller drive mower.

We've been 26 years in this business, and we're convinced we have the best fairway mower on the market for all-around performance—but what is more important—EVERY SINGLE ROSEMAN USER feels the same way we do about it.

Get all the facts on Roseman Mowers. Study them. Then ask yourself: **Could any other mower do such a swell job, at so low a cost and remain so long at peak efficiency?** We think not—and you'll be sold on Roseman, too. For complete details on the new Roseman Fairway Mowers, and also on the new low-priced 1940 Roseman Fairway Tractor, write:

ROSEMAN TRACTOR MOWER COMPANY
CENTRAL, CRAWFORD and RIDGE ROAD
EVANSTON, ILLINOIS



FORE FOR 'FORTY

1940 promises to be one of the biggest years in the history of golf. What was once a rich man's game has become the leading participation sport in the country. Are you going to be ready for golfing's big year? Remember, things that were once considered a luxury are now considered necessities. Players expect adequate tee and golf ball washing equipment. Your 1940 budget should include Lewis Washers at every tee!

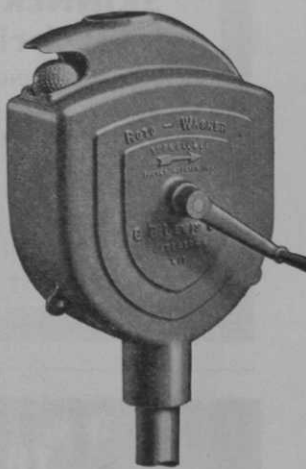
Plan ahead with LEWIS TEE EQUIPMENT



Multi-Ball Roto Washer →

Just feed dirty golf balls into the opening—turn the crank—and out they pop—clean, sparkling and white. Unique construction eliminates troublesome gears. The long-wearing circular brush has an aluminum back to prevent warping and a constant pressure is kept against the ball by a coil spring. A drain plug at the bottom of the aluminum case facilitates cleaning.

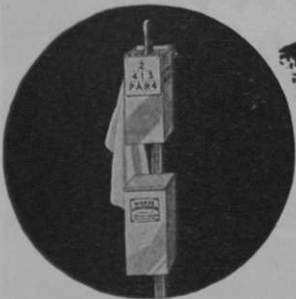
Roto-washers, each.....\$15.00
 4½ ft. post for mounting, each.. 1.25



← Paddle Type Washer

This is the inexpensive washer that does such a good job of cleaning—has such an exceptionally long life—is easily kept clean. Just pull up the paddle—insert the ball—and with a few easy strokes the ball is clean. The patented slot (shown in the phantom view to the left) does the job. Brushes have equalizing spring on back to compensate for wear, and can be easily and inexpensively replaced. Washer is finished with two coats of durable white enamel.

Paddle-Type Washers, 1 to 10, ea. \$6.00
 11 or more, ea. 5.50
 (price is washer alone)



Regular Tee Ensemble

This includes the Paddle-Type Washer, Tee Stake, Tee Data Plate, Waste Container, Towel and Towel Ring. It is a complete unit for the tee. Items may be purchased separately if desired.

Regular Tee Ensemble, each.....\$10.50

Dress up your course with Lewis Tee Ensembles



Bag Rack

Lewis Racks are a necessity on the well-groomed course. This sturdy rack is made of a scalloped aluminum casting set—screwed to a 54" long galvanized post. Complete, each \$4.75



Roto Tee Ensemble

This unit is made up of the Multi-Ball Roto Washer, Tee Towel and Towel Ring, and a Waste Container with Tee Data Plate—all conveniently mounted on a permanently installed post. Items may be purchased separately if desired.

Roto Tee Ensemble, each.....\$19.50

All Lewis Equipment is available from your favorite Golf Supply Dealer.

G. B. LEWIS CO., Dept. G 10, Watertown, Wisconsin

LEWIS GOLF BALL WASHERS AND TEE EQUIPMENT

SKINNER SYSTEM of Irrigation

This is **PLANNING TIME** for 1940.

Skinner superiority in equipment and completeness in planning service assure permanent satisfaction.

Take advantage of them for your club. At least ask for Golf Manual Bulletin 236.

THE SKINNER IRRIGATION CO.
415 Canal Street Troy, Ohio



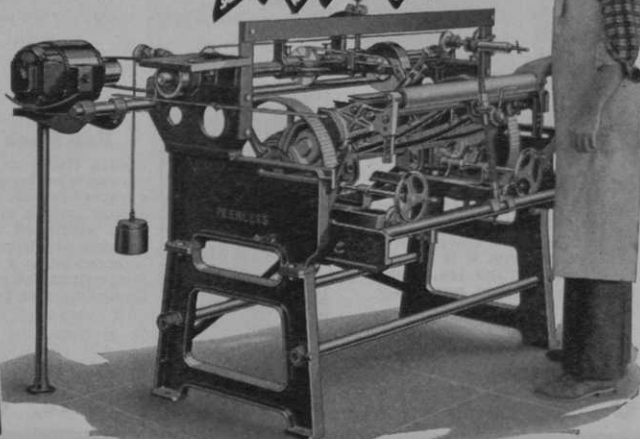
THIS IS THE WAY MODERN
Golf Clubs KEEP MOWERS

A Post Card Will Bring
Complete Information
Without Obligation . . .

Every Greens Committee will welcome the good news the Peerless Mower Sharpener brings—that all cutting units are in perfect condition—that next year your Fairways will be the envy of Clubs for miles around. The **PEERLESS** sharpens all makes of power mowers and tractor units in half the time taken by ordinary methods. Attach to light socket. Simple to operate as A B C. Get the facts today. Send postal to . . .

THE FATE-ROOT-HEATH CO.
409 Bell St.
PLYMOUTH, OHIO

SHARP!



MANUFACTURERS OF THE *Silver King* GOLF COURSE TRACTOR

BETTER TURF AT LOWER COST



THIS message is addressed to the one or more members in each golf club—usually on the greens committee — who sit in with pro and greenkeeper, help plan the coming season's turf-maintenance program, and go to bat with the finance committee for an adequate budget to keep the course in first-class condition.

To these men, we commend the words of pros and greenkeepers of championship courses the country over — positive proof that Agrico helps produce better turf at lower cost. Here is one of several important reasons:

Agrico comes in 3 grades, each grade specially formulated to do its own job and do it better — Agrico for Putting Greens, 8-6-2 . . . for Fairways, 8-6-4 . . . for Seeding New Fairways, 6-8-2. And, if you prefer an all-organic turf food, there's Agrinite, 8½% Nitrogen.

Agrico Country Club Fertilizers represent a

big step ahead — surpassing even the good old A. A. C. Coe-Mortimer Country Club Fertilizers, brands A and B, which so many old-timers recall. To get the very utmost in turf-feeding value from every dollar that goes into your 1939 maintenance budget, it will pay, and pay you well, to use Agrico.

Sold in New York Metropolitan area by Arthur D. Peterson Co., Inc., 420 Lexington Ave.; in Baltimore-Washington area by John S. Connolly, Bethesda, Md.; and by The American Agricultural Chemical Company sales offices in principal cities and A. A. C. dealers throughout the country.

Agrico is Manufactured ONLY by
The AMERICAN AGRICULTURAL CHEMICAL Co.

50 Church St.



New York

AGRICO COUNTRY CLUB FERTILIZERS

"DUCK" THIS FEED BILL with LEAD ARSENATE



You still have a chance to "grub proof" greens and fairways while the ground is soft. Application of NuREXFORM or GRASSELLI Lead Arsenate now will save time next spring.

Anyway — don't forget to "duck" the insect feed bill by protecting your course before next season.

NuREXFORM and GRASSELLI Lead Arsenate are available through your supplier.

E. I. du Pont de Nemours & Co.
Incorporated

Grasselli Chemicals Dept.

Wilmington  Delaware

There is a **BEST**
WHY NOT USE IT?



Superlatives are commonplace these days. We often hear something claimed the best when there are several higher grades... This really means "The Best for the Price." • When we use that four-letter word "BEST" in speaking about Scotts Seed we mean "The Best at any Price"... and that price is surprisingly low. » »

O. M. SCOTT and SONS COMPANY
Main Street • Marysville, Ohio

Scott's

GOLF COURSE SEED

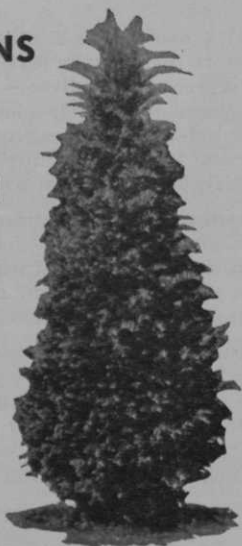
JAPANESE YEW THE ARISTOCRAT OF EVERGREENS

2 to 2½ Feet
High. Balled
and Burlapped

\$5.00 F.O.B.
Fort Wayne,
Ind.

Evergreens
Our Specialty

Catalogue
on Request



REAM NURSERY
FORT WAYNE, IND. R. 2



**THE NATURAL, INEXPENSIVE WAY
TO SOLVE YOUR FAIRWAY CONDITIONING PROBLEM—
CULTI-HOE your fairways!**

Do you have fairway headache at your course? If you are suffering from this common affliction, use the following prescription: take a new **Evans Fairway Hoe**, let its heavy duty prongs penetrate the turf to give full benefit of fertilizer and water—then watch the results. You'll have thicker, healthier turf growth and will have developed deeper, stronger roots in no time.*

Made to support heavy weight where heavily crusted soils must be penetrated. Adjustable to soil conditions and depth desired. For a real recovery, use the **Evans Fairway Hoe**—it'll do the job quickly, surely, and economically. Write for catalog and price list on



EVANS COMPLETE LINE OF GOLF COURSE EQUIPMENT
EVANS IMPLEMENT COMPANY
569-71 WHITEHALL ST., S. W., ATLANTA, GA.

* *Evans Fairway Hoe will aerate and cultivate your turf at rate of 40 acres a day with a tractor.*

IT'S GOOD BUSINESS

If you're looking for business, you know you've got to go where the business is. That's the reason golf buyers come first to the Lytton Building to transact their business—because the Lytton Building is the golf trade buying headquarters of the world! There are, by a wide margin, more golf tenants with 14 E. Jackson Blvd. as their address, than any other building can boast. These firms 'cash in' on the drawing power this location gives them.

But in addition —

The Lytton Building is an all-around 'good building to be in.' It's at the 'Hub' of the better business locations in Chicago's loop. Rents are reasonable, suites are arranged to your liking, there's every transportation facility, and you'll not find a better maintained building anywhere. May we tell you what we can do for you?

THE LYTTON BUILDING

Golf's Most Famous Address

14 E. Jackson Blvd.

Chicago

**BROWN PATCH
hasn't quit
— WHY SHOULD
YOU?**



Keep on using SPECIAL SEMESAN for late-season protection

Late in the season, brown patch and dollar spot are often "sleepers". Just when you think danger is past, turf injury may occur. For greater safety, keep up turf treatment with *Special SEMESAN*. Used at recommended strength, will not burn or thin the turf. Goes farther—treats average green for as little as \$1.23. Assures *quick, longer-lasting* protection because it contains *two* organic mercuries. No damage to sprayers. Easily applied in water solution or dry with compost. Five lbs., \$7.00; 25 lbs., \$33.00; 100 lbs., \$122.85. From your supply house.

Prices of Regular SEMESAN and NU-GREEN on request. For free Turf Disease Pamphlet, write

BAYER-SEMESAN^c COMPANY, Inc.
DU PONT BUILDING, WILMINGTON, DEL.

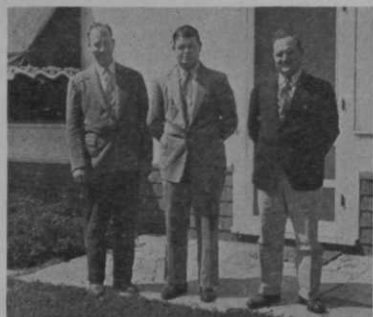
WORTHINGTON MIDWEST COMPANY

(Serving Illinois, Northern Indiana
and Southern Wisconsin)

944 Waukegan Road, Glen View, Ill.

*for all your
golf course supplies*

The Worthington Midwest Company can deliver promptly the famous Worthington Golf Chief Tractor, Worthington Gang Mowers, Overgreens, Dump Body Tractors, Scout Hand Putting Green Mowers and other accessories which give you a better golf course at less cost. For your convenience, we maintain a



(Left to right): Frank P. Dunlap, president and secretary; Leo F. Murray, vice-president and treasurer; Paul E. Burdett, salesman.

complete stock of parts and supplies, together with a turf plot for demonstrating equipment under actual working conditions. We also specialize in superior quality grass seeds, fertilizers, insecticides and other golf course necessities.

Frank P. Dunlap, president and secretary; Leo F. Murray, vice-president and treasurer; or Paul E. Burdett, of the Worthington Midwest Company, are always glad to advise you on your requirements.

Detailed illustrated catalogue showing how Worthington gives you better fairways, truer greens and trimmer rough sent you on request. Send for it today.

WORTHINGTON MOWER COMPANY

Main Office: STROUDSBURG, PA.

Sales Agencies: ALL PRINCIPAL CITIES

Will a SWIMMING POOL

- attract new members?
- promote interest of
wives and juniors?
- boost club income?

YES!



Quoting from experience

"Effects 'excellent'," Beverly C.C.—"Very effectively increased use of club", Barrington Hills C.C.—"More use of club by entire families", Exmoor C.C.—"Great impetus to club", Lake Shore C.C.—"No question that the pool has had a favorable effect on the club", Edgewood Valley—"Instrumental in keeping membership quota full", Hinsdale G.C.

Purity of Water Is Vital Factor

Graver has solved the problem of water purity by designing a complete Swim Pool Unit, to fit any size pool, for filtering and recirculating water. The Graver Unit of filters, sterilizer, heater, pumps and accessories is economical to install and maintain and easy to operate. Behind it are 77 years of engineering skill and experience.

Send for Copy of Graver's Pool Survey

Send today for Research showing how pools have increased memberships and revenue for country clubs. An interesting book will be included on Design, Construction, and Operation of Modern Pools.

GRAVER TANK & MFG. CO., INC.

5515 Tod Avenue, East Chicago, Ind.
New York — Catasauqua, Pa. — Chicago

BUDGET and SAVE with

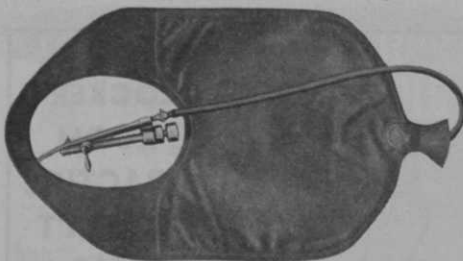
PERFECTION SPRINKLERS AND ONE-MAN PROPORTIONERS

For 1940 Perfections will be still better (much better in several ways) than ever before—so good, in fact, that you can just about write your own guarantee.

With further increased simplicity of adjustment and improved design of working parts, coupled with several other important changes in construction, these new Perfections will be found outstanding in performance and long, continuous service.

Perfections are noted for the utmost in large, even coverage and simplicity and there will be no increase in prices.

Ask your dealer or write direct.

**And! Don't Forget the Popular,**

FULLY GUARANTEED, ONE-MAN PROPORTIONER.

The Latest Contribution to Labor Saving Devices for treating Greens and Fine Lawns for Brown Patch, Worms, Grubs, etc. Also for Distributing Soluble Fertilizers, Weed Killers, etc.

Greenkeepers and Dealers everywhere are unanimous in their praise for this new device.

With the exception of the brass nozzle, it is made entirely of Chemical Resisting Rubber and, with reasonable care, it will last several seasons.

It will actually save, in time alone, several times its cost in one single season.

It will pay you to Budget for Perfection Products in 1940.

Manufactured and fully guaranteed by
PERFECTION SPRINKLER CO.
PLYMOUTH, MICH., U. S. A.

TIMELY TURF TIPS

PEAT IN NEW GREENS INCREASES NEED FOR NITROGEN

In building new greens and in reconstructing old ones, the trend is towards the use of peat, and similar substitutes, to supply needed organic matter in place of manure. Unless supplemented with ample nitrogen, complete failure, or exceedingly slow turf development follows. Peat and allied products are valuable soil conditioners, but of no appreciable fertilizer value even though nitrogen content reaches 2% or more. Their first effect is to accentuate, rather than diminish, need for nitrogen because the added decomposable organic matter stimulates growth of soil organisms. Hence disappointment is apt to follow use of peat unless enough nitrogen is used to feed the greatly increased population of microorganisms as well as the struggling young grass seedlings.

Most low grade organics containing 3% to 4% nitrogen, or less, fall in the same category.

Before seeding or planting stolons, greens should receive ample phosphate and nitrogen. The latter should be from high grade, water insoluble organics (MILORGANITE) to eliminate any possibility of preventing germination or injury to sensitive young seedlings.

The rate for superphosphate should approach 20 to 25 pounds, and for MILORGANITE 25 to 35 pounds; but if peat is the soil conditioner double the MILORGANITE rate. Even so, watch the emerging seedlings for yellow color—the first sign of nitrogen shortage—and use a little quick nitrogen to carry the grass until the first flush of microorganism activity is past.

Tell us about your Turf Problem. Write to:

Turf Service Bureau
THE SEWERAGE COMMISSION
Milwaukee • Wisconsin

MILORGANITE

“TURF INSURANCE”



● Run down, or out-of-date, or inadequate locker room equipment is as harmful to a club's prestige as an epidemic of brown patch on the 18th green! Get all the facts about Lyon Golf Lockers now for careful consideration at your next planning and budgeting meeting.

Lyon builds Golf Lockers that meet every need and every budget... compact, low-cost space savers that are amazingly roomy and convenient... deluxe units that provide private compartments, card holders, golf ball trays and many other conveniences dear to the heart of the golfer who takes his comfort as seriously as he takes his game. Write for catalog illustrating and describing this complete and outstanding line.

LYON METAL PRODUCTS, INCORPORATED
3411 River Street Aurora, Illinois

LYON
Golf Lockers

PREPARE YOUR GREENS

to go through the winter, free from snowmold, and to resist the early spring attacks of brownpatch. Use an inexpensive preventive application of CALO-CLOR.

CALO-CLOR*

comes in its original form, for dry application, having proved its value through twelve successful seasons. It also comes in SUSPENSION CALO-CLOR for application with sprayer.

We also offer CALOGREEN* — regular and SUSPENSION for small brownpatch. AURAGREEN*—a green-colored, mild preventive. Corrosive Sublimate U. S. P. grade. See your Mallinckrodt dealer or write for name.

* Trade Mark Reg. U. S. Pat. Off.

Mallinckrodt
CHEMICAL WORKS
2nd & MALLINCKRODT STS.—ST. LOUIS, MO.
70-74 GOLD ST., NEW YORK, N. Y.
Chicago Philadelphia Toronto Montreal



LOCKER-ROOM PRACTICE DOESN'T MAR THIS FINISH

Dolcorock Floor Finish, mixed with Dolco Pigment Base, forms a rock-like, high surface coating in any desired shade of the standard colors. Superior to old-type varnish, endures heavy feet pounding and is not affected by alcohol and other solvents.

Positive proof against rubber burns from rubber-sole shoes—impervious to moisture, Dolcorock Finish is ideal where water remains on floor.

Use in gymnasiums, dance floors, locker-rooms—recommended for wood, cement and magnesite floors.

Send for Dolge Floor Maintenance Manual, It's yours, FREE!

The C. B. Dolge Co.
Westport, Conn.