

# 3-COLOR SCORE CARDS

## \$2 PER THOUSAND

I'VE SEEN THE  
SAME QUALITY  
COST FOUR TIMES  
AS MUCH



**RALPH  
GULDAHL**

MORE THAN A  
SCORE CARD—A  
GREAT IDEA



**PAUL  
RUNYAN**

YOU PAY LESS  
THAN ACTUAL  
COST OF  
CARDS



**SAM  
SNEAD** (Acme)

**QUESTION:** What are PICTORIAL SCORE CARDS?

**ANSWER:** They are 3-color cards of large standard size, fine quality heavy paper (10-point board!), printed by a quality house. PLUS a brand new pictorial idea.

**QUESTION:** What is the pictorial idea?

**ANSWER:** On the back of each card there is a "Picture Lesson." We have made exclusive arrangements with 12 top-ranking pros of the world, to illustrate their methods of executing shots for which they are famous.

**QUESTION:** How can we sell these cards for \$2 per thousand, when the actual cost of paper, printing and handling far exceeds this figure?

**ANSWER:** Because we reserve a small space on the back-side bottom which we sell for advertising purposes.

**QUESTION:** How does the club benefit by this advertising?

**ANSWER:** First, by enabling you to save real money on quality cards. Second, by helping you sell profitable items. For example, where is there a more natural place to suggest beers and spirits? After a round, the 19th hole is the member's next step to paying the club a profit.

**QUESTION:** Does the name of your club appear on the card?

**ANSWER:** Yes. Prominently, on the front. The name of your pro appears on the card, if you wish. You send us one of your old cards showing yardage, pars and handicaps. We do the rest.

**REMARKS:** Managers and pros all over the country are voicing enthusiasm for cards we have already supplied them for the coming year. If it is against your club policy to accept the advertising, we will furnish the cards at \$6 per thousand.

**ACTION:** Complete the coupon. Mail it today.

## PICTORIAL SCORE CARD COMPANY, INC.

26 BROADWAY, NEW YORK CITY

Please mail me samples of your new Pictorial Score Card, together with full details and instructions for ordering.

NAME.....CLUB.....  
ADDRESS.....CITY.....STATE.....



# MONEY - SAVING MACHINES THAT KEEP MEMBERS HAPPY



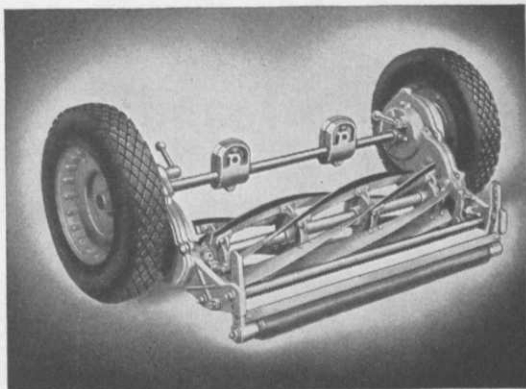
**T**HE fundamental job of a mower is to maintain the finest possible playing turf at the lowest cost per year. It's as simple as that—this selecting the line of mowers best suited to the particular conditions of your course. Study the specifications of the two Pennsylvanias described below. Compare them with those of any other mowers.

**DE LUXE FAIRWAY**—Unbreakable malleable iron construction. 6 heavy crucible steel blades. Timken roller bearings. Cylinder adjustable to take up wear. Raised edge lower blade—reversible. Train of machine cut gears on both sides. Gears protected by dust-proofed oil retaining cases. Individual alemite lubrication. Steel roller with improved dust-proof hardened steel bearings. Goodyear pneumatic tires (optional). Available singly or in gangs of 3, 5 or 7. The De Luxe Fairway is offered in the conventional 30 inch size and also the 36 inch size.

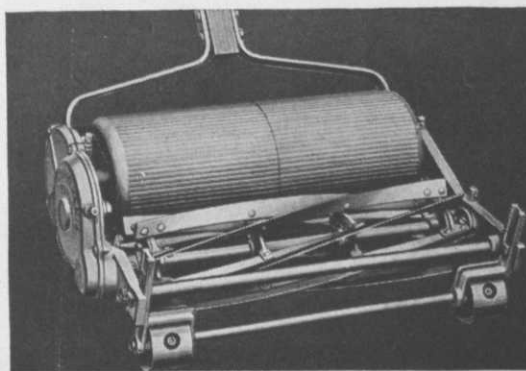
The 30 inch MODEL K FAIRWAY is similar in all important details to the Pennsylvania De Luxe except it is made of cast iron, therefore offered at a lower price.

**SUPER-ROLLER GREENSMOWER**—High speed cylinder. 8 blades of finest crucible analysis steel—oil hardened and tempered. Highest grade oil-tight ball bearings protected against dust. Train of 3 cut gears running in grease contained in dust-tight case. Castor wheels mounted on hardened steel bushings with alemite lubrication. Extra castor wheel for cutting sharply undulating greens. Aluminum rollers, 7 inches in diameter, interchangeable right or left.

Send for latest catalogue.



PENNSYLVANIA DE LUXE FAIRWAY



PENNSYLVANIA SUPER-ROLLER GREENSMOWER

*Every Proved  
Improvement  
in*

# PENNSYLVANIA

LAWN MOWERS

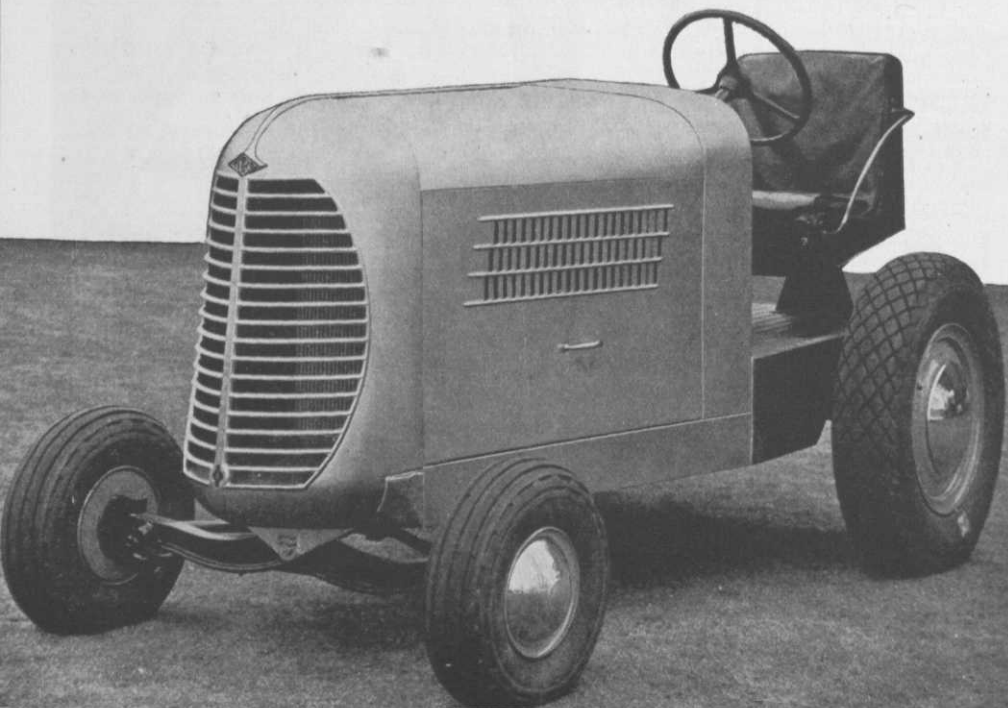
PRIMOS

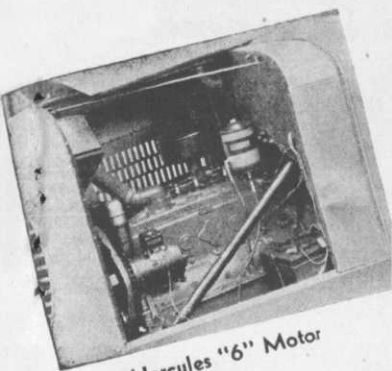
PENNA.

# Now!

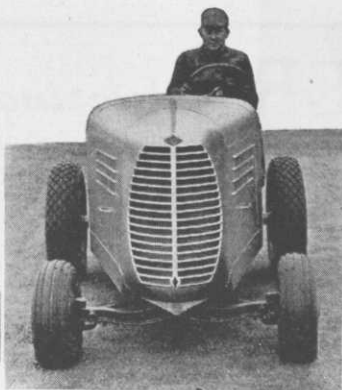
## THE NEW TORO BULLET

- **More Power**
- **Much Greater Speed**
- **Streamlined for beauty**
- **Comfortable to drive**
- **Turning radius 5½ feet**
- **A Knockout in Value**





Hercules "6" Motor



Streamlined Beauty



Comfort and Convenience

# The 1939 TORO BULLET

## Sets a New Standard in Style - Comfort - Speed - Usefulness

### CHECK THESE FEATURES

#### MOTOR

Hercules 6 Cyl. Self Starter  
Forced Feed Lubrication.

#### TRANSMISSION

Borg Warner Four Speed  
3 to 47 MPH.

#### RADIATOR

7½ gallon capacity.

#### CHASSIS

5 inch electrically welded  
channels.

#### WHEEL BASE

71 inches.

#### WEIGHT

2100 lbs.

Say Goodbye to passenger automobile power plants and shout Hello to the New Hercules 6 Cylinder Heavy-Duty Tractor Engine with self-starter, forced feed lubrication, and oil filter which permits oil to be used one full year without changing.

Say Farewell to the old style chassis with its bolts and nuts sticking out all over and wave a greeting to the new smooth, electrically welded 5-inch channels.

Say thanks for the memory of saddle iron seats and back rests that jarred the daylight out of you, and offer a glad hand for the new deep cushioned upholstered chair.

And for a beautiful, smooth, de luxe, streamlined appearance, four speed 47 mile transmission, say thanks a million, that's just what we wanted.

For details of this new outstanding tractor, see your nearest Toro Distributor or write—

# TORO Manufacturing Corporation

## Minneapolis, Minn.

# BUCKNER *Watering Equipment*

FOR GOLF  
AT ITS BEST

● The hundreds of prominent golf courses throughout the country which are BUCKNER-equipped are the best evidence of BUCKNER leadership in the field of golf course irrigation for over 25 years. Write us today!

BUCKNER MANUFACTURING CO.

FRESNO, CALIFORNIA

7658 So. Calumet Ave.  
Chicago, Ill.

7280 Melrose Avenue  
Los Angeles, Cal.



YOUR TURF WILL  
BE *Better*  
IF YOU USE . . . .

**SCOTT'S**  
GOLF COURSE  
**SEED**

ASK FOR PRICES

**O. M. Scott & Sons Co.**

*Marysville, Ohio*

## The HENRY BALL WASHER Washes Golf Balls With Rubber



**\$8.75**

F. O. B. Milwaukee

Eliminates brushes and preserves the finish on the golf ball. The new 1939 Rotary Squeegee, patented by HENRY, is made of pure gum rubber, called Latex, the toughest of tough materials, and still because it is tough *and soft*, it cleans a golf ball thoroughly without damaging its finished cover.

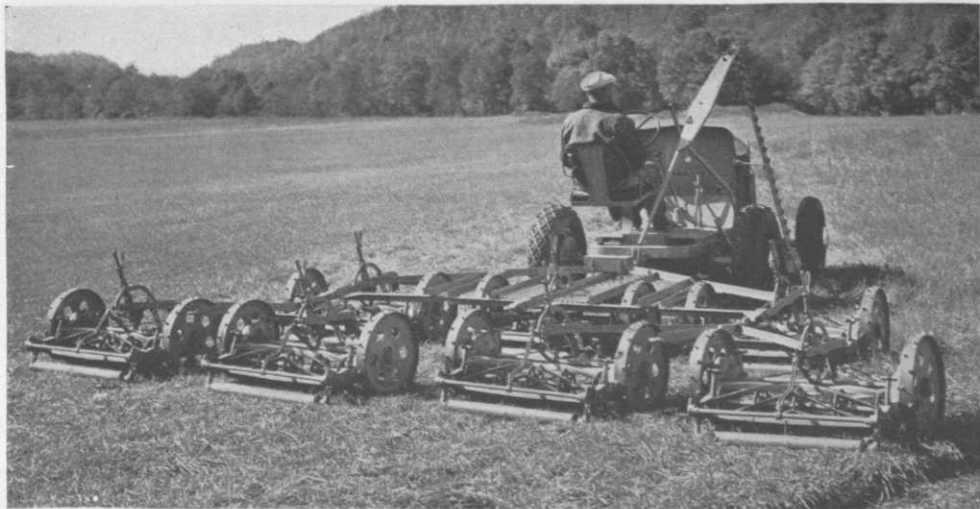
It is compact, attractive in appearance, and its housing of heavy gauge pressed steel will last a life-time. In performance it is superior to all washers on the market. You cannot afford to be without it. **CHEAPER, BETTER, MORE EFFICIENT.**

The HENRY can be attached to 1¼ inch pipe or post, and is made theft proof by the use of the Allen Set Screw. Every washer is equipped with a special Allen wrench and a snap for tee towel.

Solve your washer problems permanently by ordering your HENRY, direct, today.

*Dealers are invited to write for proposition*

**HENRY MFG. CO.** 400 S. 7th Street  
Milwaukee, Wis.



*Worthington Tractor and 7-Gang Mower taking the "ough!" out of the rough at Shawnee.*

## **WORTHINGTON TRACTORS**

give you a more  
playable rough  
and finer fairways

With the sickle bar attachment, Worthington Tractors mow a 5-foot swath through your tall grass, hay and horse weeds at 5 steady miles per hour. The 7-gang mower with its 16-foot cutting swath keeps them down as well as enabling you to keep your fairways perfect, for you can instantly adjust the height of cut from 11/32" to 4". And you can change from the 7-gang through all combinations down to the 1-unit mower in a few moments.

The tractor with its sturdy Ford motor is economical to operate and can be serviced by any Ford dealer. Its close-coupled 61" wheelbase enables it to turn on a 6.6' inside diameter—important in confined areas about traps and green approaches.

There is further economy in the power take-off which runs sprayers, compost mixers, rotary brushes, pumps and saws—it saves you the purchase of extra equipment to run your separate units—and no other golf course tractor has all these exclusive features.

The Worthington Tractor saves you time, man-power and money. Thousands of golf courses here and abroad are Worthington equipped—44 out of the 56 championship courses in the United States, Canada and England, on which the National Open and Amateur Championships have been played, have used Worthington equipment to keep in championship condition.

*Tear out this coupon so that you may have all the facts about Worthington equipment for a better golf course.*

**Worthington**  
**Mower**  
*company*

Main Office: Stroudsburg, Pa.  
Sales Agencies: All Principal Cities

Worthington Mower Co.  
Stroudsburg, Pa., Dept. G/JA.

*Please send catalogue on your equipment at no obligation.*

NAME.....

ADDRESS.....

CITY..... STATE.....

# SKINNER SYSTEM

OF IRRIGATION



## SKINNER SYSTEM SERVICE

- The Skinner System Planning and Engineering Service is available to any Club considering Golf Course Watering.
- Now is the time to lay your future plans.
- Skinner System equipment, experience and engineering ability will assure economy in first cost, efficiency in performance and permanent satisfaction.
- Write for Golf Manual No. 236. Ask about your problems.



**THE SKINNER IRRIGATION CO.**  
415 Canal Street      Troy, Ohio

Watch for . . . .

**TIMELY**

**TURF**

**TIPS**

Starting in February, **TIMELY TURF TIPS** will appear each month. These authentic "tips" will present timely topics relating to fine turf maintenance in concise, snappy short paragraphs. Later on, the series will be reproduced in loose-leaf form suitable for binding in your copy of the **ABC of Turf Culture**—a Sewerage Commission publication still available for distribution. If you do not have a copy, direct your request to address below.

As in the past, the facilities of our modern Soil Testing Laboratory and the advice of our trained agronomists are available to you. This assistance is free for the asking.

Visit the Milorganite Booth  
**KANSAS CITY SHOW**  
Consult Mr. Noer personally about your turf problems . . . even though unrelated to fertilizer usage.

**THE SEWERAGE COMMISSION**  
Milwaukee      •      Wisconsin

**GOLF CLUBS use more**  
**MILORGANITE**  
than any other **FERTILIZER**

# Come to Kansas City.....

FOR THE THIRTEENTH ANNUAL

## National Turf Conference

AND

## Equipment Show

OF THE

Greenkeeping Superintendents Association

### February 7, 8, 9, 10

EXHIBITION WILL BE IN THE MUNICIPAL AUDITORIUM  
HOTEL PRESIDENT WILL BE OFFICIAL HEADQUARTERS

Hear the country's leading turf experts explain latest developments in turf production, methods of protection against disease, etc. See and compare the latest types of maintenance equipment and supplies that every greenkeeper should have available for the important job of producing and maintaining fine turf. Every club should make certain that its course superintendent attends this annual opportunity for better turf knowledge. It'll pay big dividends for a long time to come.

### See That Your Greenkeeper Attends

*FOR COMPLETE DETAILS REGARDING EXHIBITION SPACE  
RATES, RAILROADS AND HOTEL RATES, WRITE TODAY TO*

Greenkeeping Superintendents Association

F. W. Ermer, *Chairman Show Committee*

BOX 2257, BROOKLYN STATION

CLEVELAND, OHIO





AS WE look forward to a new year, we wish to thank you—the Golf Pros of America—for your loyal and energetic support in past years; and to assure you that the Acushnet policy of selling our balls through your shops only will be continued.

F. W. Bommer, Mgr. Golf Ball Div.  
ACUSHNET PROCESS SALES COMPANY

Acushnet Golf Balls

SOLD ONLY THROUGH PROS

# TURF UNHURT BY WINTER SPORTS

By JOHN MONTEITH, Jr.

**A**T THIS season when golf on northern courses is played by the hardy but small minority the club is likely to be pretty well abandoned. In many cases it has been found that a program of winter sports encourages interest among the members who belong to the warm-weather-golfer class as well as among the children of the club members. Such activities, in addition to keeping alive the member interest, also provide some work for at least part of the greenkeeping staff during the time when they would otherwise most likely remain unemployed.

While many clubs make the utmost use of their natural facilities for the development of a winter sports program, there are many more clubs which might develop such a program to a decided advantage. The recent increase of interest in skiing and skating would seem to justify a careful rechecking by club officials of the facilities at their course for such winter use of the club property. In too many cases

a quick decision is made on this question on the grounds that too much permanent damage would be done to turf. Experience has shown that this is not the case. On the contrary, more damage to golf course turf may be done by indiscriminate skiing than is likely to occur as a result of a much more extensive use of the course for this purpose where a definite program is sponsored with some supervision or guidance.

In the case of skating rinks there is usually a feeling among club officials that a sheet of ice will kill turf and that any ideas of a skating rink on a turfed area should therefore be squelched as soon as possible.

Actually grass is seldom injured merely by a cover of ice. The injury on low areas that are so generally associated with ice sheets is usually caused by standing water rather than by ice sheets. It may also be caused by the development of one of the disease-producing fungi which are encouraged by water. Such injuries in most cases would develop on those areas even without a coating of ice.

Where clubs have lakes or ponds or suitable areas not in turf that may be dammed readily and made into winter ponds the problem of providing a skating



Greens crew clearing snow from rink of Charles River CC (Mass.) Note toboggan slide in background.



"The Lake Placid of New Jersey" is what many newspapermen have come to call the Crestmont GC, West Orange, N. J., because this club keeps its name on the sport pages, winter as well as summer.

The toboggan slide pictured above is now being used for the fourth straight winter, and green-chairman John F. Nolan credits the slide for doing more than any other one thing to keep members and their children enthused about the club throughout the year.

The slide is made of wood, is 1,000 ft. in length and 35 in. wide. At times toboggans on the slide attain the speed of 50 miles per hour. Nolan thinks the toboggan slide idea is something other clubs should adopt to maintain year-round club interest and points out that most courses are on the hilly side anyway, so that it would be little trouble or expense to install.

Ice skating is also featured at Crestmont. The club floods the water pond along the 8th fairway each winter so that it extends over two acres. Crestmont's genial greenkeeper, Bill Riley, who contributes a lot each year to make the club's winter sports program a big success, and who was once a figure skating champion, adds to the fun of the skaters by giving members and their children skating lessons.

rink does not involve any question of protecting the interests of the golf player. In such cases preparation for ice is simply one of seeing that leaves or refuse or any aquatic vegetation near the surface be removed before the ice forms. They weaken the ice especially near the edges and may cause some troublesome holes due to absorbing sunlight and melting the ice in their immediate vicinity during the warmer periods of winter. Where not already provided for, it is well to make some arrangements for the maintenance of such ponds at approximately the same level during the winter.

Where ponds are not available it is possible to provide good skating rinks by

spraying water on any reasonably flat area. If this area is in turf provision should be made for good surface drainage before the ground is frozen. With such precautions the excessive water in the spring or during extended thaws will rapidly drain away without causing any permanent injury to the turf. Barriers to retain water should be of a temporary nature, such as boards or mounds of packed wet snow.

The snowmold and related fungi thrive on turf that is covered and kept wet. Therefore the diseases caused by these fungi are apt to develop under a skating rink during the warmer periods of winter. As a precaution against such disease attacks it is well to avoid any late summer or fall fertilization of turf on which skating rinks are to be built. It is also well to apply corrosive sublimate or calomel at the rate of 3 or 4 ounces to the thousand square feet. It may be applied in sand or screened topdressing, scattered evenly over the area just before starting to build up the ice sheet. Even this precaution may well be neglected on a well-drained area where the turf is composed of the more disease-resistant types of grasses which have not been over-fertilized. Some light injury can usually be taken care of satisfactorily by spring seeding.

#### Flood Rink After Ground Is Frozen

Before starting to make a skating rink on turf it is best to wait until the ground is well frozen. This not only is a distinct advantage from the standpoint of making good ice, without the troublesome air pockets or shell ice, but also protects the turf by completely checking any growth activities. It essentially puts the turf into "cold storage" where growth is at a standstill. Grass may actually continue some growth processes under the layer of water even though the water may be covered with a fairly heavy sheet of ice.

When the ground is well frozen the layer of ice may be built up gradually by frequent spraying. Each successive layer should be thin enough to assure rapid freezing to prevent any run-off which would result in "shell ice." Every effort should be made to keep the ice free from leaves, cigarette butts, pieces of stick or other dark objects since they absorb light from the sun and "burn" holes through the ice.

On most courses with skating rinks