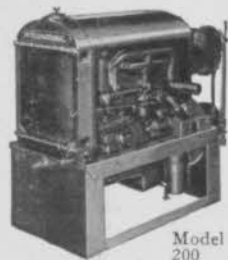
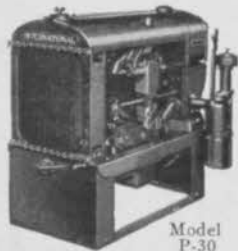


INTERNATIONAL ENGINES

*Cut
Pumping
Costs*



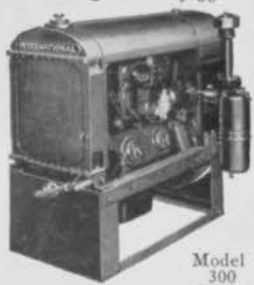
Model
200



Model
P-30

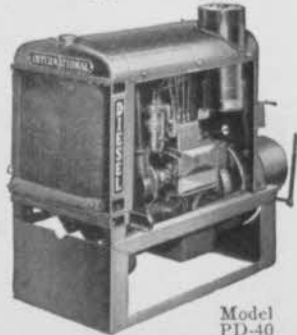
for Fairway Watering

These engines, the product of International Harvester, are thoroughly tried and tested from every standpoint for the job of pumping water for the golf club watering system, the swimming pool, the clubhouse, etc. The *sound engineering* of every detail in International Engines shows up to particular advantage in pumping work. Everywhere, they have proved their ability to provide a *smooth flow of dependable power* twenty-four hours a day for month after month.



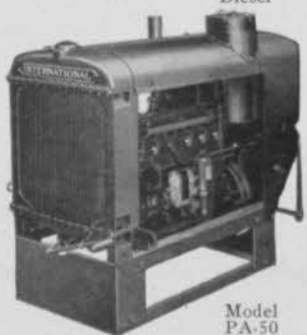
Model
300

The *economy* of International Engines is readily apparent in the cost records of their users. And this goes for *economy of maintenance* as well as of operation. They are built to be serviced *fast, easily* and at *low cost*.



Model
PD-40
Diesel

The International line ranges up to 110 max. h.p. It includes 4 and 6 cylinder engines for gasoline, kerosene, or gas, and 4 and 6-cylinder Diesel engines. Five of the ten engines in the line are shown here. Find out more about International Engines from the International dealer or Company-owned branch. Write us for information.



Model
PA-50

INTERNATIONAL HARVESTER COMPANY

(Incorporated)

180 NORTH MICHIGAN AVENUE

CHICAGO, ILLINOIS

INTERNATIONAL HARVESTER

The Ten Year Mower



Now!

A New Sickle Bar with All the Necessary Safety Features

Almost any sickle bar will cut grass and weeds. The troublesome factor in all bar type mowers is the constant hazard of hitting hard objects that are hidden in the heavy growth. Rocks, boulders, stumps, horseshoes, tin cans and fence posts all are encountered some time or another and a sickle bar must be designed and engineered to withstand these sudden shocks. It is with this in mind that we have designed the new

TORO ROUGH MASTER

Read these interesting features and see what we have done to build a sturdy, fool-proof and work-proof sickle bar.

1. Releasing device which permits bar to swing back when hitting an obstruction.
2. Hardened steel shoe with spring mounted grass rod.
3. Rocker arm drive which eliminates 50% of the vibration common to machines with direct pitman drive.
4. Heavy duty guards, section and plates.
5. Power takeoff from drive shaft reduction gear.
6. Tilting lever which provides various angles of cut.
7. Horizontal lift lever which raises the bar any height up to eight inches off the ground.
8. Vertical lift lever which raises the bar full up without getting off the tractor.
9. Operating lever which throws sickle in and out of gear.

*Send for
Our 1938 Tractor and
Mower Catalog*

TORO MANUFACTURING CORPORATION

MINNEAPOLIS

MINNESOTA



They Point with Pride to Skinner System Golf Courses

Maybe you remember the above picture of the Hershey C.C., Penna. It was pointed to with pride in the Cast Iron Pipe Association's Golfdom advertising last month. Yes, it and its neighboring Community course are Skinner System equipped throughout.

When Transite points with pride it selects Skinner System equipped Plandome C.C., Wheeling Steel shows Moraine C.C., Dayton, Youngstown Steel and Republic choose Youngstown C.C. . . . and so it goes. All clubs completely equipped with Skinner System.

Good clubs have the good judgment to choose Superior equipment. The results command admiration. Send for Golf Manual. Use Skinner planning service.

THE SKINNER IRRIGATION CO., 415 CANAL ST., TROY, OHIO



BOMB BROWN PATCH

THIS YEAR *with* **FUNGOL**

POWERFUL COMBINED FUNGICIDE & VERMICIDE

Turf experts are putting their O.K. on Fungol, the multi-chemical product for Large and Small Brown Patch, Snow Mold, etc.

Fungol is not just a couple chemicals mixed together. Contains many valuable ingredients not otherwise obtainable in turf Fungicides.

Fungol operates uniformly. May be applied in solution or dry with sureness of perfect action to prevent and control fungous diseases, at low cost.

TREMENDOUS COVERING CAPACITY

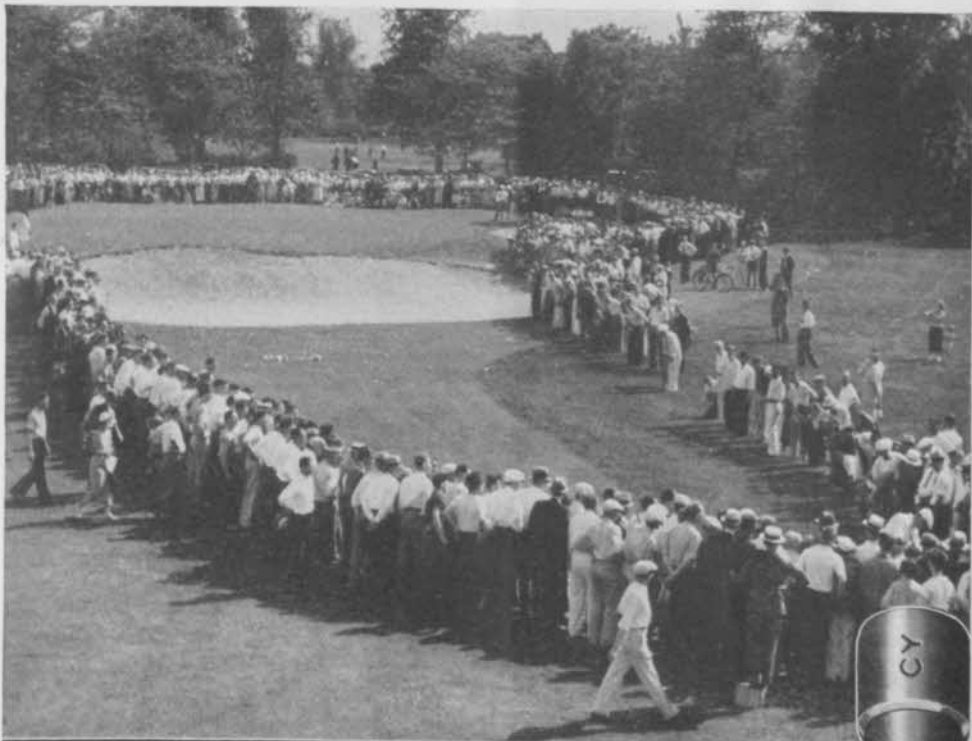
More Fungol users yearly appreciate economy of this highly technical product. Pound treats 3,500 to 7,000 square feet of Green. Your saving when you spend money for turf protection.

Special chemicals in Fungol for controlling Earthworms, Sod Webworms, Cutworms, Grubs, etc. Why buy other chemicals for Soil Vermin when you can use Fungol?

Write for literature and free testing sample.



McCLAIN BROTHERS CO., Canton, Ohio



FIRST CAME STEEL ... *then* COP-R-LOY
For Golf Course
 SPRINKLING SYSTEMS

First came steel pipe to make possible "every-evening" sprinkling of fairways and greens. Then came COP-R-LOY Pipe, introducing the greater resistance to corrosion of fine mild steel alloyed with pure copper—creating a new standard of durability for longer, better and more economical service. Wheeling Steel Corporation, Wheeling, West Va.

COP-R-LOY *Pipe*
U. S. Pat. Off.



IT'S WHEELING STEEL

For Greater Golfing Pleasure
BUCKNER Watering Equipment!

Your members enjoy the game more—
 your course becomes a favorite—when
modernized with BUCKNER Equipment
 . . . the choice of leading clubs every-
 where because of its scientifically en-
 gineered efficiency and economy. Write
 NOW for our illustrated Bulletin C.

"The Standard by which others are judged"

BUCKNER MANUFACTURING COMPANY

FRESNO

CALIFORNIA

ELIZABETH

NEW JERSEY

• Use QUICKMAIL coupon No. 18 to answer this ad •

NuREXFORM ARSENATE OF LEAD

. . . . for smooth, healthy turf



• Applications of NuREXFORM Arsenate of Lead to your greens, tees, fairways, lawns and shrubbery assure success in controlling the damage done by grubs and earthworms.

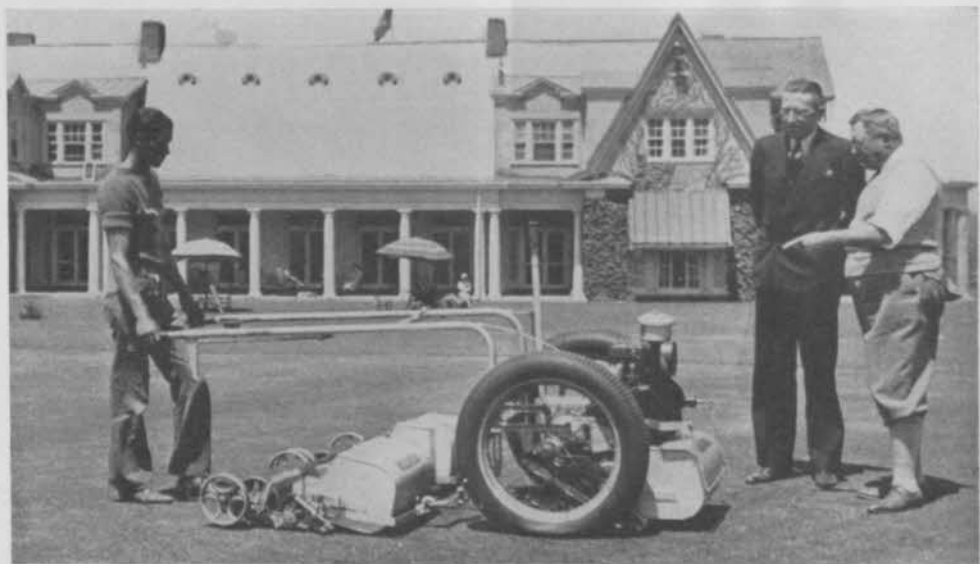
The assurance is due to the uniformity and fineness of particles of NuREXFORM. It spreads evenly, is economical to use and can be used as a dust or spray.

WRITE FOR FOLDER ON GRUB CONTROL

E. I. DU PONT DE NEMOURS & COMPANY, INC.



GRASSELLI CHEMICALS DEPARTMENT
 WILMINGTON, DELAWARE



The Bellevue Country Club of Syracuse keeps its greens in top condition with the Worthington Overgreen. Taken just before N. Y. State Amateur Championship in 1935.

WORTHINGTON OVERGREENS improve your putting

Overgreen cut greens give you the most perfect putting surface possible. The Overgreen cuts in concentric circles so that no matter where your ball lies, it will travel over the same nap or grain to the cup. Old-fashioned, straight-line cut greens are alternately "fast" and "slow," for each stripe or ribbon means a change of nap. Because Overgreen cut greens are always "true," they'll do wonders for your short game.

They'll do wonders for your budget, too. One man with a Worthington Overgreen can cut the full 18-holes—including

travel between greens—in 5 hours; a job that takes between 18 and 22 man-hours on the average 18-hole course. The over-size pneumatic tires cannot mar nor cut the turf and there's less weight on any part in contact with the ground than the 30 to 35-pound push on a hand mower which is transmitted directly to the green.

Many prominent clubs, here and abroad, have used Worthington Overgreens with satisfaction in improved conditions of their courses and in lowered operating expenses. Remember, Overgreens cut costs from the day of delivery.

Tear out this coupon for handsome illustrated catalogue showing the Overgreen and other time and money-saving equipment.

Worthington
Mower
Company

Main Office: Stroudsburg, Pa.
Sales Agencies: All Principal Cities

Worthington Mower Co.
Stroudsburg, Pa., Dept. G-A

Please send catalogue on your equipment at no obligation.

NAME.....

ADDRESS.....

CITY.....STATE.....

• If you prefer, use QUICKMAIL Coupon No. 11 to answer this ad •



**the
NEW
NELSON
"SILVER TOP"
VALVE**

With Removable Main Valve and Supplementary Shut-Off

- Main valve removable from top of casing without disconnecting from water main or disturbing turf.
- Supplementary shut-off closes automatically when valve is removed. Saves draining main. Permits other sprinklers on line to operate without interruption.
- Highly polished, chromium plated cap is easy to locate at night.
- Send for the 1938 Sprinkling Equipment Catalog which describes the "Silver Top Valve" and other Nelson equipment.

L. R. NELSON MFG. CO.
PEORIA, ILLINOIS

NELSON
Sprinkling Equipment

STANDARD

GUARANTEED

Golf

COURSE EQUIPMENT

**BIGGER
and
BETTER
for
1938**

**ASK FOR
DETAILS!**

Write for a copy of our big, new Bulletin No. G38 and you will readily understand why Club Officials everywhere are turning to Standard for dependable equipment and service. It illustrates our new Ball Rack—describes the "Six Ball" Washer—explains the advantages of "one-piece" Cups and tells you about "quality" Flag Poles. Write today, please!

- "True-Vue" Flags and "Quality" Poles.
- "One-Piece" Putting Cups, Cup Setters and Extractor.
- "Cuts-True" Hole Cutters and Divot Repairers.
- "Six-Ball" Washer, Ball Rack and Retriever.
- "Aluminum" Yardage Tee, Green, Direction, Regulation and Entrance Markers and Signs.

STANDARD MFG. CO., Cedar Falls, Iowa

**WHIRLWIND
POWER
MOWER**



FIRST CHOICE
for Efficiency
Economy, Performance

Everyday more groundkeepers are depending on Whirlwind Power Mowers to keep their lawns beautiful. Whirlwind is built to turn out a complete lawn in one operation; built to eliminate tedious, expensive re-cutting and hand trimming. Synchronized, suction cutting unit mows fine grass or coarse . . . also tall weeds . . . at any height desired. Cuts mowing cost in half. Write for folder No. 3 for full information on all models.



**WHIRLWIND POWER
MOWER**

WHIRLWIND LAWN MOWERS SALES CORP.
Milwaukee Wisconsin
Answer above ad with QUICKMAIL No. 7

DEEP-ROOTED TURF

"Agrico helps check weeds and clover; gives us healthy, vigorous turf," says Joseph F. Flynn, Supt., Metropolis Country Club, White Plains, N. Y. Read letter, at right.



"Agrico produces deep-rooted turf with firm, upright grass," says William H. Griffiths (right), Supt. Glen Oaks Golf Course, Great Neck, L. I., N. Y., in his letter, at right.



"WE have used Agrico Country Club Fertilizers on greens, tees and fairways for 4 years, with splendid results," says Joseph F. Flynn, Supt. Metropolis Country Club, White Plains, N. Y. He adds:

"Turf has healthy color, fine texture, vigorous root system. I find Agrico safe to use even in hot weather, in moderation, for it keeps bents active and checks clover and weeds. Agrico has what it takes to grow and hold good turf."

6-Year Results

Everywhere, it's the same story; for example, William H. Griffiths, Supt. of Glen Oaks, Great Neck, L. I., writes: "We've used Agrico Country Club Fertilizers for 6 years, and they have markedly improved our turf—given us deep-rooted turf with firm, upright grass. Our greens are in play continuously; besides, many have poor air circulation and so are liable to attacks of fungi; yet, our turf has stood up unusually well. We credit this to Agrico, minimum use of sulphates, and careful use of spray materials."

This spring get your grass off to a good start, and keep it green and smooth all summer with Agrico Country Club Fertilizers. In Agrico for Putting Greens (8-6-2), Agrico for Fairways (8-6-4) and Agrico for Seeding New Fairways (6-8-2), you have 3 special-purpose fertilizers for 3 special jobs.

Sold in New York Metropolitan area by Arthur D. Peterson Co., Inc., 420 Lexington Ave.; in Chicago by Worthington Midwest Co., 1043 West Washington Blvd.; in Detroit by The American Agricultural Chemical Co., 204 South Forman Ave.; in Baltimore-Washington area by John S. Connolly, Bethesda, Md.; and by A.A.C. sales offices in other principal cities.

Agrico is Manufactured Only by

**The AMERICAN AGRICULTURAL
CHEMICAL Co.**



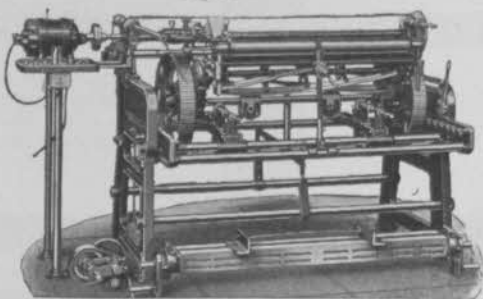
50 Church Street, New York

AGRICO COUNTRY CLUB FERTILIZERS

• Use QUICKMAIL Coupon No. 25 to answer this ad •

USED BY THE COUNTRY'S
Leading Golf Clubs

THE
Peerless
MOWER SHARPENER



• The Peerless Mower Sharpener will keep your cutting units sharp and your turf looking its best the year around. It's simple to operate, sharpens in half the usual time and handles all types of power mowers and tractor units. Made in two sizes—for blades up to 36 in. or 42 in. wide. Reconditioner for "lapping in." Catalog and prices upon request.

THE
Silver King
TRACTOR



• The Silver King is an ideal Golf Course Tractor designed to take care of every service required for complete turf maintenance. Features include: low first cost, unusual economy of operation, high speed, ample power, low pressure tires or wide roller type wheels as desired, light weight, four speed transmission, 2 1/4 to 2 5/8 miles per hour. Catalog and prices upon request.

CATALOG *free!*
THE FATE-ROOT-HEATH CO.
1137 BELL ST. - PLYMOUTH, OHIO

YOUR TURF WILL
BE *Better*
IF YOU USE

SCOTT'S
GOLF COURSE
SEED

ASK FOR PRICES
O. M. Scott & Sons Co.
Marysville, Ohio

**GOLF
FLAGS**

with a guarantee of
SATISFACTORY SERVICE.

**CHAMBERLAIN GOLF FLAGS
ARE FADE PROOF—SHRINK
PROOF—and WEAR LONGER.
BETTER LOOKING, TOO!**

Send for Prices

ERNEST CHAMBERLAIN
8628 ELMIRA AVE. -:- DETROIT, MICH.

Use **QUICKMAIL** Coupon No. 23

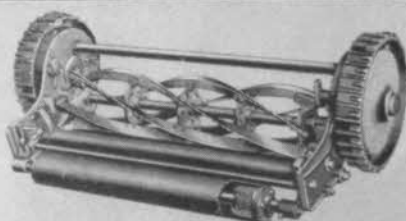


Interested in **REAL** mowing **ECONOMY?**—Use the **IDEAL "BULLDOG"** method

The sturdy, simple construction of Ideal Bulldog Gang Mowers provides economies second to none in the fairway mower field. Simplified design, high quality materials and experienced workmanship have produced equipment on which up-keep costs have been reduced to a minimum.

Compare the records of the hundreds of users. Cleaner, faster cutting is secured with lower operating cost. The close-coupled units mow evenly over the tops of ridges without scalping and do a perfect job right down to the bottom of the hollows.

Write for complete information about Ideal Gang Mowers and the Ideal Power Greensmower (in circle above). This lightweight putting greensmower duplicates skillful handwork, reduces cost and produces finer greens.



CHECK THESE "BULLDOG" FEATURES:

- Available in 3, 5, 7 and 9 gangs
- Interchangeable
- Drop forged gears
- Oversize adjustable bearings
- Simple adjustment

IDEAL POWER LAWN MOWER CO.

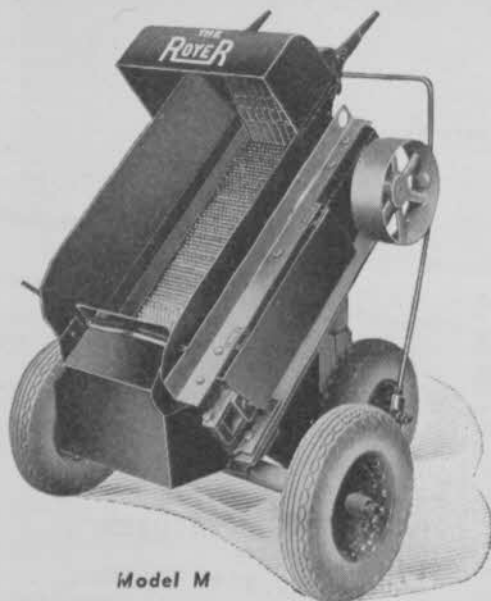
446 Kalamazoo Street, Lansing, Michigan

New York Branch:
12 HARRISON STREET
New Rochelle, N. Y.

Canadian Distributors:
AIKENHEAD HARDWARE, Ltd.
17 Temperance St., Toronto, Ont.

• Use QUICKMAIL Coupon No. 6 to answer this ad •

Good Compost •
makes
 Good Greens •
The ROYER
makes
 Good Compost •



Model M

THIS efficient little machine mixes, screens and loads the finished product in one operation . . . and does it from six to ten times as fast as it can be done by any other method.

It produces a better product at a saving in time and money of from 70 to 90 per cent . . . as evidenced by statements from golf clubs throughout the country.

For sale by leading golf equipment houses

ROYER
 FOUNDRY & MACHINE CO.
 158 PRINGLE ST. KINGSTON, PA.



SEED
 prices are down!

The players are the judge and jury—your greens and fairway turf is the evidence that will put your course "in the dough" or "in the dog house." Which will it be?

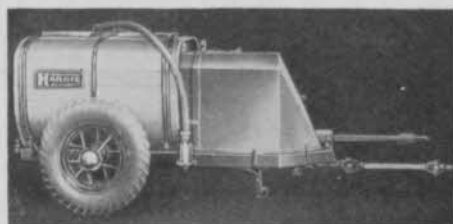
Price & Weather advise you to SEED NOW! And, we are ready to quote you on a quality of seed that has us humming with spring orders. How about it? Maintenance equipment and supplies? . . . our 1938 catalog will show you thrift!

GEO. A. DAVIS, Inc.

5440 NORTHWEST HIGHWAY (AVENUE 6130)
 CHICAGO, ILL.

Quickmail No. 26 Brings 1938 Catalog

Answer above ad with QUICKMAIL No. 26



KEEP greens and grounds up to par with a specialized Hardie Golf Sprayer for weed control, brown patch, application of liquid fertilizers and all spraying needs. Many models. Ask your equipment dealer. Write for catalog.

The Hardie Mfg. Company, Hudson, Mich.; Portland, Oregon; Los Angeles, Calif.; New York City; Brockport, N. Y.; Export Dept., Detroit, Mich., U. S. A.

HARDIE
 DEPENDABLE
 SPRAYERS

Answer above ad with QUICKMAIL No. 30