

Trimming the grass at the Louisville, Ky., airport with the International Fairway Tractor and a gang of mowers—one of the many duties the Fairway Tractor ably handles at airports and golf courses.

The International Fairway Tractor Keeps the Louisville Airport in Shape

FLYING TRACTORS? No, but before planes and passengers fly, International Harvester power plays its vital part. Millions of yards of waste and debris are molded and shaped—great acreages blossom into landing fields and terminals under the crawlers of big International DIESELS. Then, attending the flights of the great liners into and out of ports from coast to coast, the smaller International Tractors do their stuff. From towing and placing the

planes and stowing them snugly in the hangars to maintaining the grounds, these tractors are relied on because of their efficiency and economy. Take a tip from aviation—bank on International Tractors to power maintenance operations on your golf course. The Louisville airport officials find the International Fairway the ideal tractor for this and other work. Ask the nearby industrial power dealer or Company-owned branch what this tractor can do for you.

INTERNATIONAL HARVESTER COMPANY

(Incorporated)

HARVESTER BUILDING -- CHICAGO, ILLINOIS

INTERNATIONAL HARVESTER

WORTHINGTON TRACTORS

**do more jobs
more quickly ..
with less trouble
at less cost**



WITH Fall and Winter just around the corner, you'll want maintenance equipment with a real plus value. The Worthington tractor has that plus value, for with Worthington gang mowers it not only keeps your course in championship condition all summer, but also is useful for many other jobs with the power take-off.

The convenient power take-off not only runs the sickle bar attachment by a direct power connection, but with pulley and belt also runs compost mixers, power sprayers, rotary brushes, pumps and saws—saves cost of extra equipment. No other golf course tractor has this feature—think of the savings to you.

Snow plows attached to Worthington tractors keep club driveways and

skating rinks clear in winter. Ice planers attached to Worthington tractors keep club skating rinks in perfect condition.

Write today for illustrated catalog on Worthington Equipment — the choice of champions.



Trouble-Saving Worthington Trailer Dump Cart for fertilizer, sod, sand or gravel.

Worthington
Mower
company

Main Office
Stroudsburg, Pa.

Sales Agencies
All Principal Cities

WORTHINGTON MOWER CO.
Stroudsburg, Pa. Dept. G/N

Please send, without obligation, complete information on your equipment.

Name.....

Address.....

City..... State.....

SKINNER SYSTEM LEVER TYPE SNAP VALVE

... is the only type and make of valve in which a single sprinkler unit can be operated, turned on or off by the mere turn of a handle. In shutting off sprinkler it is not necessary to remove it as is the case with the other types. Our new Golf Manual No. 236 tells the complete story. Ask for it today.

THE SKINNER IRRIGATION CO.
415 Canal Street Troy, Ohio



STYMIED— BY WORMS



When worm casts stymie your ball, pitch over them—but who wants to pitch on a putting green?

During the early fall, worms are nearer the surface than during the dry summer months. Now is the time effectively to kill them before breeding.

DIWORMA, diluted one and one-half pints to fifty gallons of water will do the trick. Coming to the surface to die, they can easily be raked up. Does not burn the grass. A boon to greenkeepers.

Send for Free Ground Maintenance Manual.

The C. B. Dolge Co.
Westport. Conn.

SCOTT *Quality* WAS NEVER **HIGHER**

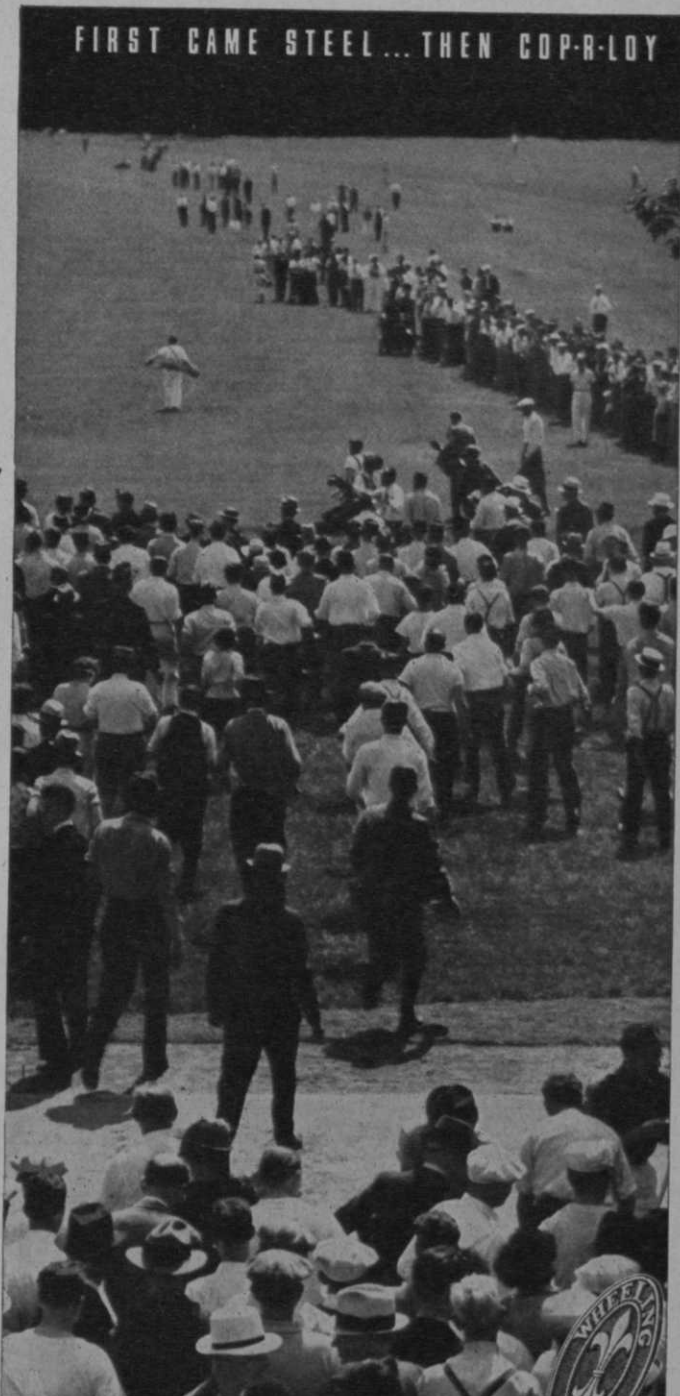
SCOTT *Prices* WERE NEVER **LOWER**

Now is the time to make those needed improvements. May we help? O. M. Scott and Sons Company, Marysville, Ohio.

Scott's

SCOTT'S SEED makes BEAUTIFUL TURF!

FIRST CAME STEEL... THEN COP-R-LOY



For
**WATERED
 GREENS *and*
 FAIRWAYS**

In planning the watering system for your course consider it as an investment for many years to come. Follow the lead of industrialists and builders who choose COP-R-LOY Pipe for its proved durability—for the extra resistance it offers to corrosion as a result of Wheeling's combination of pure copper with fine mild steel. Protect your investment by insisting upon COP-R-LOY Pipe. Wheeling Steel Corporation, Wheeling, West Va.

COP-R-LOY
Reg. U. S. Pat. Off.
Pipe



*The World's First and Finest
Long Range-Slow Motion Sprinkler*

"The Standard by which others are judged"

BUCKNER MANUFACTURING COMPANY

1615 BLACKSTONE AVENUE
FRESNO CALIFORNIA

418 NORTH BROAD STREET
ELIZABETH NEW JERSEY

**The SEED
comes first**

The first consideration in building and maintaining fine turf quality is the seed you buy. For over fifty years we have furnished the finest turf grasses on Golf Courses, Parks and Estates . . . Write for new crop prices.

Our complete stock of all supplies and equipment for the golf course is available to you for immediate delivery.

FREE golf course supply booklet will be mailed to you on request.

MICHELL'S SEED HOUSE

518 MARKET ST., PHILADELPHIA



SPIKE DISC

**LAWN & GREEN
CULTIVATORS**
(Patented)

For Greens,
One Handle
Model
(Illus.)
\$27.50

With Two
Handles
\$30.00

Tractor
Model for
Fairways
\$120.00

"Use Regularly," Say
Authorities

ALL TURF NEEDS AERATION

SPIKE DISC'S slicing cuts can scarcely be seen but they open the soil keeping it healthy and permit moisture, seeds and top dressing to penetrate—results that please the golfer and do credit to the greenkeeper.

Leading clubs use spike discs frequently for good greens and fairways.

Details, Prices at your Golf Equipment Dealer or

JOHN H. GRAHAM & CO., Inc.

1136 Chambers St., N. Y., Sales Agents—268 Market St., San Fran., 565 W. Washington, Chicago
Manufactured by Stoner-Maurer Co., Monroe, Mich.
Successors to Wilder-Strong Co.

Also makers of Dunham Water Weight Rollers

Practical Aspects of Fertilizer Usage on Fairways, Cemetery Lawns and Parks

WITH the present flare for chemical soil tests, a word of caution regarding methods of collecting soil samples is in order, for obviously results are no more accurate than the sample submitted for analysis. Soil taken from a single spot is not always typical of an entire area; hence a composite sample is preferable always. Such samples should be taken for each soil type, but never include soil of different texture or color in the same composite. Collect samples from typical topographic locations, such as hillside slopes, high and low areas. Depth of sampling is important, because entirely different results may be obtained from samples taken at different depths. The composite should represent individual cores of uniform diameter taken to a depth of two inches only. If determinations on the deeper soil are desired, separate samples should be collected.

The layman accepts rapid chemical tests as an exact measure of available soil nutrients. Except for acidity, this is not true. Until methods have been perfected, they serve as rough guides only, and must be used with discretion.

Acidity can be tested on the property. Make two determinations at each location, one at a depth of one-half inch and the other at 3 to 4 inches. Extreme acidity may be confined to the surface, then less lime is needed.

RATE OF LIME APPLICATION: Besides acidity, rate of lime application depends upon soil types and kind of grass. To produce the same degree of change, less lime is needed on sandy loam than on loam and heavier soils of equal initial reaction. Fescue and bent need less lime than Kentucky blue grass. Table I can be used as a rough guide for applying lime in the form of ground limestone.

TABLE I.

Rates for Applying Ground Limestone
(For hydrated Lime Reduce Quantity 25%)

Texture of Soil	Degree Soil Acidity	Lbs. per Acre	
		Ken-tucky Blue Grass	Fescue and Bent
Sands and Sandy Loams	Slight	1000	None
	Medium	2000	1000
	Strong	3000	2000
Loams, Silt Loams, Clay Loams, Clay	Slight	2000	None
	Medium	3000	2000
	Strong	4000	3000

Ground limestone is the safest material to use because hydrated lime is apt to burn. With hydrate, even at 1 ton per acre it is safer to make two half-ton applications ten days apart. In neutralizing value 75 pounds of hydrate equals 100 pounds of limestone.

Apply lime in spring or late fall. Always allow a lapse of 10 to 14 days between its use and the application of fertilizer containing nitrogen in the form of ammonia, otherwise loss of nitrogen or serious burning may occur. This is most imperative with hydrated lime. In the East, use dolomitic limestone to eliminate any possibility of magnesium deficiency. If possible, apply needed lime several months before using lead arsenate to control grubs and worms.

HOW TO DETERMINE NEED FOR NITROGEN: Mention has been made of the fact that nitrogen is the dominant need on established grass because of its effect upon color and growth. Inspection of the turf is the simple way to determine need for nitrogen. None of the rapid tests is a trustworthy indicator.

From every angle, a slow rate of growth and continuous green color are best. This assures turf of pleasing color with the least amount of mowing. To approach this ideal with water soluble fertilizer, it is necessary to use light rates at frequent intervals. One application of an organic produces the same effect, because its nitrogen is gradually converted into available form as needed by the growing grass.

Where turf is good and reasonably free from weeds, annual applications of organic fertilizer (such as Milorganite) at rates of 800 to 1200 pounds per acre suffice. On thin turf, nitrogen should be applied spring and fall until desired density is obtained. Initial applications should be 1000 to 1800 pounds with succeeding rates reduced to 800 to 1200 pounds per acre.

Where soluble nitrogen is desired with the organic fertilizer to promote immediate growth, or as an additional aid in weed suppression, an initial application of 1000 to 1500 pounds organic fertilizer (such as Milorganite), and 100 to 200 pounds sulphate of ammonia, or similar material, is suggested. Subsequent spring and fall rates can be reduced to 500 to 800 pounds organic, and 75 to 150 pounds inorganic fertilizer.

CAUTION AGAINST BURNING: Heavy rates of soluble fertilizer, such as ammonium sulphate, urea, ammonium phosphate, etc.,

feed with **MILORGANITE**
THE ORGANIC-NITROGEN TURF FERTILIZER

The A B C of TURF CULTURE

must be avoided, due to the danger of burning. Before growth starts in early spring, 200 to 300 pounds per acre can be applied with impunity, but after that it is unwise to exceed rates of 100 to 200 pounds per acre. Even so, burning is likely if the grass is wet, or heavily laden with dew.

During hot weather, burning may occur even though the grass is dry, so if weather suddenly turns hot, suspend operations until temperatures moderate.

WHEN TO APPLY NITROGEN: Spring and fall are the logical times to apply nitrogen fertilizer, especially if rainfall is the sole source of water. Spring applications are best made early, but are safe until late May.

In dense shade, fertilize sparingly in mid-summer. Growth is necessarily slow because of limited light, and is further restricted by high temperatures. Excesses of nitrogen enhance the natural tendency of grass to become soft and tender.

WHEN AND HOW TO APPLY PHOSPHORUS: When soil contains a reasonable supply of available phosphorus, the generous use of phosphate is unnecessary. Some of the soil tests are fair criteria for determining need for phosphorus, provided lead arsenate has not been used in quantity. Soil texture and kind of grass also affect rate of application. Less phosphate is needed on sandy soils than on heavier soil, and the rate can be lower for bent and fescue than for phosphorus loving Kentucky blue grass. Table II can be used as a guide for phosphate rates. It is based upon the Truog phosphorus test and the use of 20% superphosphate.

TABLE II.

Rates for Applying Superphosphate (20% grade or equal) on Established Turf.

Texture of Soil	Avail. Phosphorus Lbs. per Acre Truog Method	Pounds per Acre 20% Superphosphate	
		Kentucky Blue Grass	Fescue and Bent Grass
Sands	0-25	200-300	100-200
and	25-50	100-200	0-100
Sandy	50-75	0-100	None
Loams	75+	None	None
Loams,	0-25	300-400	200-300
Silt and	25-50	200-300	100-200
Clay Loam,	50-75	100-200	0-100
Clay	75+	0-100	None

Where available phosphorus approaches the larger quantity of phosphate; where it approaches the upper limit, use smaller quantity.

Apply phosphate either in spring or fall. With rates suggested in Table II, it may never be necessary to repeat heavy applications if subsequent feeding is with a fertilizer containing about half as much phosphoric acid as nitrogen.

On very acid soils, if possible, apply needed lime several months before phosphate. Best procedure is to use lime in late fall, and phosphate early the following spring. This minimizes conversion of phosphate into difficultly soluble forms by the acid soil.

POTASH APPLICATIONS: Most rapid chemical methods for available potassium are unsatisfactory. They tend to show a deficiency which is not borne out by field trials. In the rare instances where potash is required on poor sands, peats and mucks, use 100-200 pounds per acre of 50% muriate of potash every two to four years.

On new grass seedings use lime in accordance with the recommendations contained in Table I. If possible, apply several months before seeding and work into the soil.

Abundant phosphate is important, so rates suggested for established turf, Table II, should be increased 25 to 40%. For nitrogen, true organics (such as Milorganite) are best. On exceedingly poor soil, use 1500 to 2500 pounds per acre, from 1200 to 1500 pounds on light colored soil of moderate fertility; from 800 to 1200 pounds on the better soils. The fertilizer should be applied before seeding and worked into surface soil to depth of 1 1/2 to 2 inches.

FERTILIZER EQUIPMENT AND COMPUTATIONS: Apply fertilizer with one of the better two-wheel hopper type, fertilizer distributors now available. To insure even distribution, select a machine with closely spaced outlet spouts. Caution operators to overlap on each round because fertilizer does not move laterally in the soil. Outlets spouts should be closed promptly when the machine is stopped, otherwise fertilizer will continue to run from the spouts and produce burned spots. For the same reason, in filling the hopper do not spill fertilizer on the grass.

For all practical purposes, where fairways average 50 yards wide there is one acre for each 100 yards of length and an acre for each 80 yards when average is 60 yards. To compute approximate acreage, subtract short-hole yardage and length of area to be omitted in front of each tee from total course yardage; depending upon average fairway width, divide by 100 or 80. Then calculation of fertilizer requirements is simple. (To be continued)

Presented by THE SEWERAGE COMMISSION MILWAUKEE, WISCONSIN
Printed in U. S. A.

MILORGANITE

TWO APPLICATIONS A YEAR ARE SUFFICIENT

Tear out this sheet and save for permanent reference.



No drought will burn up these Fairways

Now, with membership income restored, you can go ahead with those long deferred plans for a **permanent** irrigation system.

And don't be "penny wise" . . . it costs only a few pennies more per foot installed to use under-ground pipe you **know** will resist rust and give permanent service.



McWANE 2" CAST IRON PIPE

No rust . . . no leaks . . . no repairs . . . no replacements when you use McWane Cast Iron Pipe. Flexible! Rounds curves without fittings. Precalked Joints! Easily, quickly laid with unskilled labor. And remember — only McWane makes cast iron pipe small enough for a complete installation that makes every foot of your irrigation system rustproof and everlasting! All sizes 1/4" thru 12".

McWANE CAST IRON PIPE CO.
Birmingham, Ala.

POOL HEALTH

THE popularity of any Swim Pool—municipal, club or private—depends upon the condition of the water. To be absolutely safe, pool water should be crystal-clear and kept in constant circulation.

Graver Swim Pool equipment insures water that is actually "pure enough to drink". Graver units are the result of years of sound engineering and designing experience.

Country Clubs . . . Estate Owners . . . Municipalities

If you are planning a pool, be sure to send for the Graver Book on Design, Construction and Operation of Modern Pools. It is chock full of first-hand data presented in an interesting, comprehensive way. You may have a copy on request.



GRAVER TANK & MFG. CO., Inc.
New York, N.Y. Chicago, Ill. Catasauqua, Pa. E. Chicago, Ind.

FOR PERFECT GREENS NEXT SEASON

Plant **WOODRUFF SEEDS** Today

Win the praise of your greens committee - and your members - all next season - by planting Woodruff seeds now. Woodruff mixes a blend of seeds based on a study of your soil and climatic conditions - and then follows the job through until you're satisfied with your greens and fairways. Use this individual blending service. **WRITE TODAY**

Woodco
brand grass seed

Write-Grass Seed Division
F. H. WOODRUFF & SONS
Milford, Conn.; Bellerose, L.I.; Toledo, Ohio

Golf Atmosphere!



THE

LYTTON BUILDING

has it!

For years most all the pros have been coming to the LYTTON BUILDING, either to do their pro-shopping, (because so many golf manufacturers have their sales branch in the LYTTON BUILDING) or just to meet the boys around PGA headquarters. All of which today has made the LYTTON BUILDING the building where *golf* is the prevailing atmosphere.

Come in and let us tell you all the advantages of this famous golf address—14 East Jackson Blvd.

- In the heart of downtown Chicago
- All transportation at its door
- Suites conveniently arranged
- Rents are reasonable

LEE E. EATON, Manager

Telephone: WABash 3477

14 EAST JACKSON BLVD • CHICAGO

“YES—

AGRICO DID THE TRICK!”

*says James Floyd, Pro, of
Southern Dutchess Country
Club, Beacon, N. Y.*



“When I took charge of Southern Dutchess Country Club greens,” writes James Floyd, Pro and Greenskeeper, “I found they had been fertilized with sulphate of ammonia, bone meal and other materials sold for mixed grass home lawns. After many years tending bent grass greens, The American Agricultural Chemical Company’s fertilizers were well known to me, so I immediately began using your Agrico Country Club Fertilizer. The very first year Agrico made such a wonderful improvement in the greens that members gave me many nice compliments.

“I have continued to use Agrico and there has been a steady and increased improvement—so much so, that other nearby golf clubs have called on me for advice. I always recommend Agrico, and everybody who takes my advice is well satisfied. After 4 years here at Southern Dutchess, our bent grass greens present as healthy and true a putting surface as could be desired. Agrico certainly does the trick!”

Thank you, Mr. Floyd. That confirms the experience of other leading pros and greenskeepers the country over—convincing proof of Agrico’s *extra* plant feeding efficiency. Better results, simply because Agrico comes in three grades, each specially formulated to do its own job better than any all-purpose fertilizer can possibly do.

To get dark green, springy, luxuriant turf, use a special purpose fertilizer: Agrico for Putting Greens (8-5-2), Agrico for Fairways (6-8-2), Agrico for Lawns and Fairways (8-6-4). Sold in New York Metropolitan area by Arthur D. Peterson Co., Inc., 420 Lexington Ave.; in Detroit by Detroit Commercial Sales Co. (Earl E. Michaud); in Baltimore-Washington area by John S. Connolly, Bethesda, Md., and by A. A. C. sales offices in principal cities.



**Agrico is Manufactured Only by
The AMERICAN AGRICULTURAL CHEMICAL Co.**

Sales Offices in Principal Cities

AGRICO COUNTRY CLUB FERTILIZERS

It's been a Glorious Year

FOR HOL-HI

K-28

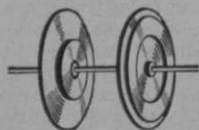


● The phenomenal performance of Hol-Hi K-28 has been a big factor in boosting 75c sales for the boys in 1937.

The spectacular preview of the Hol-Hi K-28 in 1936—its winning of the Western Open, the Augusta Open, the P.G.A. Championship at Pinehurst and the Miami Biltmore gave foundation for the prediction it would be the sensation of 1937—and it has fulfilled that prediction with the most dramatic victory parade in history. Chief among these wins are:

Metropolitan Open, won by Jimmy Hines, playing the new Hol-Hi K-28 and Wilson clubs. **P. G. A. Championship**, won for the second time by Denny Shute; Jug McSpaden runner-up. Both played the new Hol-Hi K-28 and Wilson clubs. **National Open**, won by

Ralph Guldahl with a record 281, playing the new Hol-Hi K-28 and Wilson clubs. **Women's Western Open**, won by Helen Hicks, playing the new Hol-Hi K-28 and Wilson clubs. **1937 British Open and British Amateur Championships** both won by players using Wilson Golf Equipment. **Chicago \$10,000 Open**, won by Gene Sarazen, playing the new Hol-Hi K-28 and Wilson clubs.



No wonder this ball is a best seller. For fly-wheel action dramatized in advertising and by the self-proving Hol-Hi fly-wheel demonstrator has sold the world of golfers on the stroke-saving advantage of this great ball. Next year, as this year, count on Hol-Hi K-28 to come through for you in a big way.

Players whose names are mentioned are retained on Wilson's advisory staff.

*"It pays
to play"*

Wilson

GOLF EQUIPMENT



*By this mark you shall
know fine golf
equipment*