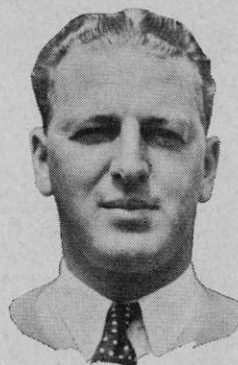


# *It's a* **DUNLOP YEAR!**

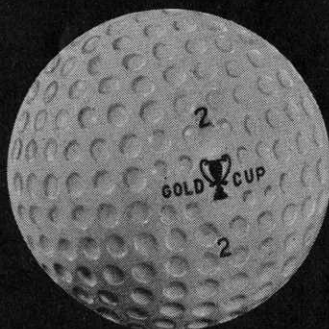


**Craig Wood**



**Henry Picard**

HENRY PICARD and CRAIG WOOD lend the selling power of their names and records to the Dunlop Maxfli golf clubs which they themselves designed in collaboration with George Aulbach. See them—try them for yourself—you be the judge. Dunlop Tire & Rubber Co, Sheridan Drive, Buffalo, N. Y.



**DUNLOP GOLD CUP 75c**

*America's longest-hitting golf ball now tougher than ever!*



**DUNLOP P. G. A. 75c**

*Grand value in a long-flying ball with vulcanized cover!*

**23,200,000**  
**COPIES OF THE**  
**SATURDAY**  
**EVENING POST**  
**are Telling Your**  
**Members to Buy**

**WORTHINGTON**  
*world's largest exclusive maker of*  
**GOLF BALLS**

Every other week, right through the best golfing season, the Worthington message goes to golfers . . . . telling them to buy more golf balls and better golf balls . . . . building business for you.

**Better for You to Sell Because They are Better for the Golfer to Play . . .**

Keep your stock of Worthington Balls up . . . . check it today and reorder . . . . for your members want these three advantages.



**GOLF'S FINEST**  
 Sold only by Pros

**VULCANIZED  
 LATEX COVERS**  
**LAMINATED  
 WINDINGS**  
**PATENTED CENTERS**

**THE WORTHINGTON BALL CO.**  
 Elyria, Ohio



**LES STROKES SAYS:**

Play a new ball—the golf course is no place for antiques.

**"It's Wrong" Says Ring on  
 Women's Rights**

**W**ALTER RING, Goldsmith's golf guy, went to the Women's Western Open at "Landonville," Kan., because La Didrikson was one of the young ladies of the ensemble. The Ringer, with a cold and quizzical look at the milk which now has a prominent place in his diet, comments on a commercial aspect of the woman's affair at Topeka:

"We all will make millions when those women really get started buying golf clubs. Except the top-notchers, most of the women in the big field had the most terrible looking messes of hand-me-down clubs you ever saw. I don't think they were hand-me-downs from husbands and fathers of this generation, either. Some of those clubs ante-dated Tom Morris, Sr.

"What has happened to American chivalry, sir, that permits wives, daughters, mothers and sweethearts to play with the junk most of them have. It is an outrage to our fair womankind. I view with alarm this denial of the constitutional privilege of good clubs won at the expense of the precious blood of our fore-mothers and I point with pride to . . ."

At which point The Ringer was reminded that it was Landon and not Ring at Topeka who got news of the nomination. He stared at the milk and shook his head mournfully. "It ain't right, anyway," he reflected.

**L**ABOR DAY, set by Congress in 1894, comes too early for the sports business. Therefore the campaign by the National Association of Amusement Parks, Pools and Beaches to have governmental action set back Labor Day until the first Monday after Sept. 15. Golf interests have been urged to cooperate in this campaign.

The old idea that Labor Day is the end of summer outdoor weather is now only a calendar, and not actual, matter. A lot of fine weather for golf and other outdoor sports comes in September, and it is hoped that by setting back Labor Day officially outdoor recreation programs will be extended.

**P**ATER-FILIUS event, long a fixture at the Midlothian CC (Chicago district), will be held this year on July 23.

Last year a pro Pater-Filius event was run as part of the tournament and attracted many of the Chicago district's pro

father and son teams. Jock Hutchisons, pere et fil, won low gross and the Harry Hamptons, senior and junior, low net.

Midlothian officials cordially invite pro father-and-son teams, and this year an enlarged field including many teams from Midwestern territory is expected. The club's pro, Jock Patterson, Midlothian, Ill., will gladly make reservations for any amateur or pro father-and-son team.

**WOMEN'S** Western Junior championship, for girls of sixteen or under, will be played at Oakland Hills CC, Birmingham, Mich., starting July 6. It's one of the country's most delightful golf tournaments and a great treat for any youngster who enters. There are flights sufficient to assure each girl a place in the tournament.

Pros have done a great deal to encourage this tournament and to co-operate with the officials of the Women's Western GA, who conduct it. Details of this year's tournament will be supplied on request by Mrs. Charles H. Booth, 17400 Third Ave., Detroit, Mich.

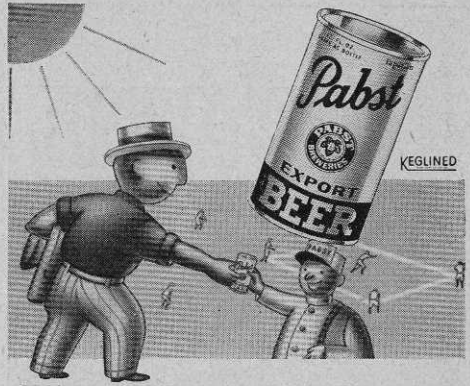
**WHEELING,** West Virginia, will have an Open tournament during the week of August 16, for a purse of \$1,000. It will be a two day affair and will run over the course of the Wheeling CC. The event will be a feature of the Wheeling centennial celebration.

The spot is a good one for some of the boys to pick up dough, and the Wheeling golf nuts always make sure that pros enjoy themselves. Jack Grimes of the Wheeling Steel Co., Wheeling, W. Va., is in charge of the tournament and will furnish complete details to interested prospective entrants.

**New York Clubs Get Relief  
From High Liquor Licenses**

**L**OCAL and state liquor license expense to clubs in some localities still is far too high for enterprises organized on a non-profit basis and for a comparatively short season.

District associations having this license cost as a problem will do well to get after it again. The New York State Golf Association, whose member clubs were hit with a license fee of from \$750 to \$1,000, were successful in getting a rational readjustment of fees, due to efforts of a committee headed by Martin W. Littleton, Jr.



**The seventh inning  
stretch for PABST**

**D**ROP the old thermometer down a couple of inches with the delicious cool refreshment that is waiting for you in those famous silver cans that bring you Pabst Export Beer—the product of ninety-two years of brewing experience.

For the most in summer refreshment. At the ball game, at work, at home or at play—join the millions who enjoy real beer goodness—insist on Pabst TAPaCan.



**Old Tankard Ale**  
Enjoy genuine Old Tankard Ale—full bodied, full flavored, full strength. Brewed and mellowed by Pabst.

**INSIST ON ORIGINAL  
PABST TAPaCan**

- Brewery Goodness Sealed In
- Protected Flavor and Wholesomeness
- Non-refillable—Tamper-proof
- Flat Top—It Stacks Easily
- Saves Half the Space
- No Deposits to Pay—No Returns
- Easy to Carry—No Breakage

**PABST** *Export* **BEER**  
TAPaCan  
BREWERY GOODNESS SEALED RIGHT IN



## A Safe Approach

**Remove floor hazards with SANI-TREADS**

Fourteen years ago, SANI-TREADS removed the hazard of "athlete's foot" from locker room floors. Today the word SANI-TREAD has passed into the language to denote "paper slipper" . . . But not all paper slippers are SANI-TREADS. To ensure getting the original SANI-TREADS with their patent-protected safety features, look for the name SANI-TREAD stamped on every slipper.



Clubs can now obtain genuine SANI-TREADS at rock-bottom prices. Do not accept cheaply made substitutes. Beware of paper slippers infringing the SANI-TREAD patent. If you are one of the few clubs that have not made the acquaintance of SANI-TREADS, write for samples and literature.

# SANI-TREADS

**THE ORIGINAL CLUB BATH SLIPPERS**  
 THE SANI-TREAD COMPANY, INC.  
 567 Washington St., Buffalo, N. Y.  
 578 King St., West, Toronto, Canada

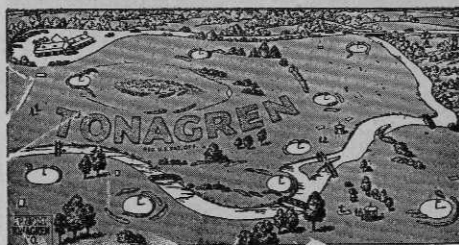
**ORVILLE PARKER**, clever, active press agent for the Detroit-Leland hotel, arranged a helpful detail for the field at the True-Temper tournament. Parker made a deal with the Chevrolet Motor people to supply automobiles for transportation of players to and from the Birmingham club. By having the Michigan PGA make the Detroit-Leland headquarters for the players, Parker was able to get attractive hotel rates for the players.

Already he is at work on business for the 1937 National Open. With his hotel making good rates for the boys, and with Chevrolet, of which Mike Coyle, golf enthusiast, is president, going in on the transportation deal again, Detroit's plans for caring for Open contestants are well under way.

**BOXES** of Kleenex or similar tissue paper in your women's rooms will reduce the club laundry bill.

And by the way, are there shower caps in your women's showers?

**HOW** long since you have checked the condition of the fire extinguishers at your club?



## TEST TONAGREN AT OUR RISK

We are so sure that TONAGREN will eradicate clover and stop brown patch on your greens that we make this liberal trial offer with full money back guarantee.

### Amazing Trial Offer

Pin a dollar bill to your letterhead and we will send you a generous trial package of TONAGREN—enough to treat 1,000 square feet of clover infested greens two times. If after the second application you cannot see a marked improvement—write us and we will gladly refund your dollar. You have nothing to lose. Send for your trial package of TONAGREN today.

**P. & M. TONAGREN COMPANY**  
 153 ADAM DENVER, COLO.

No Shortage of Compost Under  
This Three-Month Plan

By CLINTON K. BRADLEY, SR.

Passaic Co. Golf Course, Paterson, N. J.

**M**ODERN golf, cultural practices and playing conditions must be turned out on a production basis, as are all other industrial enterprises. Turf wear and soil compaction from increased play make such demands on topdressing supplies that they are soon exhausted when composted by old methods.

On recently built courses, or in changing greenkeepers on a course, there is often a shortage of available compost. Greenkeepers desire to build up a good turf and make an impressive showing. The writer, having taken over both new and established courses in various parts of the country has, through necessity, worked out composting processes to meet present day requirements.

Composting consists of breaking down soil materials to the plant available stage over a period of time by the action of chemicals, bacteria, and the elements, such as light, air, water, temperature, for feeding, correcting, and replenishing basic soil conditions. Time, an important factor, can



**DEFENDER  
OF THE  
OULD SOD—**

**BUT PLENTY  
SCOTCH  
TOO—**



# SPECIAL SEMESAN

A real organic mercury  
brown patch fungicide  
**SAVES YOU MONEY  
WHILE IT  
SAVES YOUR GREENS**

There's a real Irish wallop in the way Special Semesan battles brown patch on your greens — and real Scotch thrift in its low cost. During severe brown patch weather, you need to apply Special Semesan less frequently than the inorganic mercuries to get satisfactory control. One pound treats 6,000 square feet of turf — costs as little as \$1.65 a green. Saves sprayer repair bills, because it's easier on parts. From your supply house. Five lbs., \$10.00; 25 lbs., \$42.50; 100 lbs., \$165.00.

**BAYER-SEMESAN CO., INC., WILMINGTON, DEL.**

**Write for  
free turf  
disease  
pamphlets**

Regular Semesan and Nu-Green are obtainable at the following prices: Semesan — 25 lbs., \$46.25; 100 lbs., \$180.00; 300 lbs., \$525.00. Nu-Green — 25 lbs., \$30.00; 100 lbs., \$115.00; 300 lbs., \$330.00.

## Next Rebate JULY 20TH!

•  
*Settle your Penfold  
account before the  
19th of July and get  
your check the day  
after.*

•  
*No receipted bills necessary*

# PENFOLD

Main Office—11 Park Place, New York

Chicago

218 S. Wabash Ave.

Cleveland

2000 West 14th St.

# FREE OFFER

EXPIRING  
WITHIN 30 DAYS

10 lbs. Ball Washing and Disinfectant  
Compound that won't sour.....\$2.50  
1 large can Anti-Mole Seed that really  
kills ..... .50  
YOU GET BOTH—FREE.....\$3.00

TO INTRODUCE

## G&O CHINCH BUG G&O

FORMULA

A fine powder of Rotonone, Pyrethrum,  
Nicotine Sulphate, and Tobacco Dust (3 lbs.  
per 1000 sq. ft.) Every user says "It's a  
Non-Burning Wonder"

Price, 25 lb. drum.....\$6.75

Remit \$6.75 and we will send prepaid ALL  
3 PRODUCTS at once.

Manufactured By

**GOULARD & OLENA, INC.**  
CHEMICAL MANUFACTURERS  
140 LIBERTY ST. NEW YORK, N. Y.

# TORO

ALL OVER THE WORLD

## TORO HAND PUTTING GREEN MOWER



Now in its twelfth year . . . regarded  
by Superintendents everywhere as the  
finest produced . . . a precision machine  
for true, smooth greens . . . Creeping  
Bent, Bermuda or any other grass.

Write for information.

**TORO MANUFACTURING CORPORATION**

3042 Snelling Ave., OF MINNESOTA Minneapolis, Minnesota, U. S. A.

be reduced by supplying the other essentials in concentrates.

A three month process of preparing compost that is being successfully employed, is as follows:

Stake out a field which is not subject to flooding from higher ground, 104 ft. long by 54 ft. wide near an irrigation line accessible for working. A field that has been previously stripped of topsoil will suffice. Using the stake line as center, dig a trench 1 ft. deep and 2 ft. wide around the field, leaving a portion at the highest point not trenched, for machinery to enter. The excavated soil can be banked along the trench inside the field. Call this "field number one," and as many as needed could be laid out, each about 5,000 sq. ft.

One formula is to spread on the field a 6-in. layer (about 100 cu. yds.) of any organic material such as sod, green weeds, grass clippings, peat or muck. Then mix 250 lbs. each of superphosphate, ammonium sulphate and Aero Cyanamid, with 150 lbs. potassium muriate. Spread these 900 lbs. of chemicals over the field promptly after mixing, as it tends to heat and cake. Then cover the field with a 3 in. layer of sand, subsoil, or any suitable filler of required physical condition. Wet thoroughly and keep moist for two weeks. (About 50 cu. yds. of filler are needed for a 3 in. layer of sand over 5,000 sq. ft.)

### Cultivation, Watering Must Continue for Seven Weeks

The third week allow the field to become dry enough so that layers can be cultivated with a disc harrow or one of the rotary plows now on the market. Continue cultivating and watering at least once a week for seven weeks or more. From the tenth to twelfth week, let the field dry by cultivating at least twice a week, with no more irrigation. When the compost is fairly dry and crumbly, remove it from the field and store under shelter for screening. It can be used immediately.

In the event the field is laid out on barren soil, it is well to spread at least 3 cu. yds. of manure or rich topsoil (included in the 100 cu. yds. of organics) over the organic constituent for bacterial inoculation. An area this size will yield about 100 cu. yds. of compost which, when screened, will average 75 yds. of siftings, and 25 yds. of tailings. The tailings should be placed back on the field to hold bacterial content if field is barren of topsoil; or they may be used on tees or as topsoil for construction purposes.

This compost will contain an approxi-

mate ratio 2 parts nitrogen, 1 part  $P_2O_5$ , 1 part  $K_2O$  and sufficient calcium. It will analyze in percentage variously, according to the organics used. The best time to start laying the field is around the first of April, and count the "curing" time from April 15th to July 15th in northern states.

There need be little fear of the weed seeds which are present in the green weeds, soil or manure used, as Aero Cyanamid is toxic when applied in the stated amounts. A kerosene oil torch, burning under the soil screener, will further sterilize the soil of weed seeds, insect eggs, etc., and aids in drying so that the compost will pass through a screen of one-eighth mesh, providing curing is done exactly as stated.

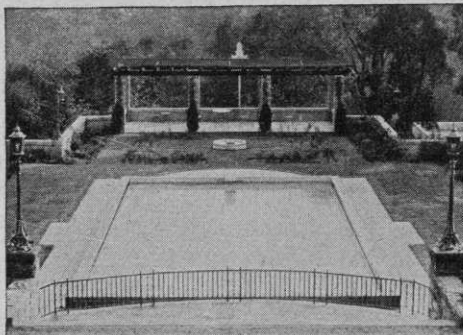
Aero Cyanamid is a trade name of the product calcium cyanamid, a synthetic carbon compound containing 22% nitrogen and 70% hydrated lime, and is produced in granular or powdered form. The terminology is used so that no mistake will be made by using calcium chloride. Aero Cyanamid is extensively used in the manufacture of commercial fertilizers as a conditioner and is commonly referred to as "nigger," due to its black color.



On the left, a plat from an unsterilized field—18 weeds of 7 species. On the right, a plat from a field chemically sterilized and flame treated during screening—one weed.

While the soil has been sterilized of viable weed seeds during the curing, grass seed germination will not be effected when the seeds are sown in the completely processed soil. Thick coated weed seeds that may withstand the sterilization will not withstand close clipping at fairway grass height of cut and will soon die. Rarely do weeds or any seeds live through the punishment of the sterilizing.

The chemical mixture used costs about \$1.50 per 100 lbs., or \$30 per ton. A yard of screened compost by this method will



**PLANNING A SWIMMING POOL?**

It's important to know the latest methods of circulating and keeping water pure and clear. Send for the helpful Graver book on Modern Design, Construction and Operation of Indoor and Outdoor Pools. Graver Equipment is used in hundreds of private, club and municipal pools. Write for this valuable booklet today. It's free.

**GRAVER TANK & MFG. CO., Inc.**  
 New York, N. Y.                      Catasauqua, Pa.  
 Chicago, Ill.                              East Chicago, Ind.



**PUTTING GREEN POINTS TO NOTE AND REMEMBER!**

Two-in-One Control for Fungous Diseases and Soil Vermin. Finest Brown Patch Preventative. Tremendous Covering Capacity. Super Chemical Value. Ready Mixed and Safe. Easily Applied.

**About FUNGOL**  
**EXCLUSIVE DOUBLE PROCESS FUNGICIDE**



There is no substitute for this high grade, chemical product giving hundreds of Courses real economical protection from Large and Small Brown Patch.

The wisdom in using FUNGOL comes from its high rate of covering capacity—3500 to 7,000 square feet to the pound.

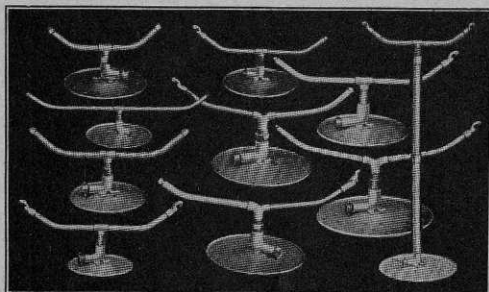
Let us explain the double feature of FUNGOL whereby it also provides extra feature of combatting soil vermin, earthworms, sod webworms, cutworms, grubs, etc.—without added cost.

Ask your dealer or write direct for complete details and free testing samples of FUNGOL and VEG-E-TONIC.

**McCLAIN BROTHERS Co.**  
 CANTON, OHIO

**VEG-E-TONIC**  
 Positive and safe Putting Green grass producer Builds up dormant turf. Restores weak soil areas. High Nitrogen, Phosphoric Acid and Potash. Dissolves in water. Results certain. Economical

# PERFECTIONS



## LARGER—SLOWER— MORE EVEN DISTRIBUTION

Combined with simplicity and lower prices has made Perfections the first choice of careful buyers.

For 1936 there is a Perfection to meet every requirement—from the New Fairway Size, No. WH15, to cover up to 200 ft. circle, at only \$20.00—down to the old reliable No. T9 at \$7.50 covering 75 ft. circle on only 20 lb. pressure.

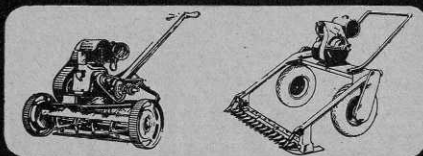
Then there are the HD and HD Jr., especially designed, heavy duty Tee Sprinklers, \$4.50 and \$3.00.

Ask your dealer or write direct for full description and prices. Better still, ask for 10 day free trial.

Manufactured Exclusively and Fully Guaranteed by

**PERFECTION SPRINKLER CO.**  
PLYMOUTH, MICHIGAN

# MOWERS



A new type Sickle Bar Mower for cutting hay and weeds in rough

Before purchasing any mowers, it will pay you to write us and have our complete mower catalog on hand

Power, Fairway, Greens mowers, Tractors.

ATTRACTIVE PRICES

Write for Catalog



**NATIONAL MOWER CO.**

839 Cromwell Ave., St. Paul, Minn.

cost between two and three dollars, with labor at fifty cents per hour. Machinery used, cost of washed sand, etc., will vary the total cost.

I use muck from a swamp bordering our course property for my organic source. I recommend that if green cover crops be grown, they be sown on unused land areas, harvested and spread on the compost field. Be careful when spreading chemicals on such a field, as they may burn foliage and kill growth.

A rotary cultivator will prevent ridging of the field, eliminate the need of running the compost through a shredder or grinder, result in less tailings, and effect a better cure due to more thorough cultivation.

It is often advantageous to use only 85 lbs. of ammonium phosphate 11-48 grade, and 200 lbs. of ammonium sulphate (total 285 lbs.) instead of 250 lbs. of superphosphate and 250 lbs. of ammonium sulphate (total 500 lbs.) This is because in some soils the superphosphate tends to revert. The ammonium phosphate, however, has a lesser calcium sulphate content.

I have adopted this formula as standard and have been working on it since 1926 with good results in Connecticut, Rhode Island, New York, and New Jersey. I have other formulas of topdressing preparations that can be used immediately, and others that need curing only 30 days. Due to the potency of these mixtures, it is safer to spread on scant. I hesitate to suggest that they be extensively used.

My personal preference for topdressing analyzes 45% sand, 45% silt, 10% clay, (Boyucos test); 10% organic matter on ignition, 30% water-holding capacity, 5% colloids, all passing through one-eighth inch mesh; and they should average chemically: N, 2%; P<sub>2</sub>O<sub>5</sub>, 1%; K<sub>2</sub>O, ½%; CaO, 1½%. I strive for pH6.

**H**OMEOWNERS, estate, park, and golf course superintendents will have a special lawns program at the 18th annual Massachusetts Farm and Home Week, to be held at Massachusetts State College, Amherst, July 28-31. The lawns program is scheduled for July 30. Watering, fertilizing, insect control, plant food deficiencies, and control of weeds are major subjects for discussion.

Dr. H. B. Sprague, agronomist at N. J. Agric. Experiment Station; Dr. T. E. Odland, agronomist at R. I. Agric. Experiment Station; and Lawrence S. Dickinson, professor of agronomy at M. S. C. and turf management specialist, are speakers on the program.



**Equipment Cuts Water Costs Up to \$220 Monthly at California Course**

**T**HE Barbara Worth CC, located in Imperial Valley, just west of Holtville, Calif., has the first golf course in the valley that attempted to have an all-grass course, including greens, and was also the first club in the valley to attempt to irrigate its entire course by the use of sprinklers and a pump.

The cost of operating the electric driven pumping unit originally installed proved excessive, and this summer the club came to a point where it was forced to make a decision; either of abandoning the motor driven pump unit and going to a flooding system or finding some cheaper source of power to furnish water.

As a result of an investigation, the club now has a gasoline engine driven pump which is handling twice the number of sprinklers that the old motor driven unit handled, at a cost sufficiently reduced to prove it is entirely satisfactory and can be operated within the budget allowed for this purpose.

The unit consists of a 6-cylinder Continental gasoline engine, rated at 65 h.p. at 2,200 r.p.m. The engine is direct connected to a Fairbanks-Morse 5-in., horizontal split case pump which is operating at 1,500 r.p.m. and furnishes water to operate 45 sprinklers at 60 lb. pressure at the discharge of the pump.

**Solve Carburetor Trouble with Siphon Control**

When the unit was started, several difficulties arose in the operation, which have since been worked out satisfactory. For example, it was found that during the time of changing sprinklers to new stands, the load on the engine would vary, thus changing the heating, which in turn would effect the carburetion of the butane gas which is used for fuel.

This came about from the fact that the cooling water on the engine is passed through the carburetor in order to vaporize the butane liquid. If the temperature runs too low, the butane immediately freezes the carburetor and shuts off the gas supply. This was corrected by the installation of a siphon valve, which works automatically and holds a constant temperature on the cooling water. The cooling water from the engine is taken from the discharge of the pump, circulated through the engine under control of the siphon valve and returned to the pump.

Another difficulty that developed was

**Why Buy a Mower That Does Only HALF the Job?**

The Gravely will work under every condition. The Power Driven Sickle Mower cuts everything . . . rough places . . . spots

you've had to use hand-scythes . . . even sprouts . . . and a big swath every time. To same tractor you can attach a 30-in. Reel Type Mower—two Mowers for the price of one!



Don't be satisfied with less. Drop a post-card today for full details.

**Gravely Motor Plow & Cult. Co.**  
Box 841, Dunbar, W. Va.

**ERADICATE BROWN PATCH**

**DO THE JOB RIGHT**

**EFFECTIVE**  
Thousands of Greenkeepers "Can't be Wrong"

**ECONOMICAL**  
Priced to meet Competition  
Fine Powder

**USE PFIZER MERCURIAL MIX**  
2-3 Calomel 1-3 Corrosive Sublimate

**CHAS. PFIZER & CO. INC.**  
CHICAGO, ILL. NEW YORK, N. Y.  
444 W. Grand Ave. 81 Maiden Lane

Write for a circular  
**Calomel Corrosive Sublimate**



IN LOS ANGELES

The **PARK-  
WILSHIRE**

HOTEL APARTMENTS

**2424 WILSHIRE BLVD.**  
AT WESTLAKE PARK

●  
**FROM \$2.50 PER DAY**  
FROM \$60 PER MONTH

that of cooling the lubricating oil. The only means for cooling the lubricating oil in a unit of this kind (a rebuilt truck engine) was the splash pan at the bottom of the engine. Operating in a truck, the flow of air by the pan of the engine is sufficient to keep the lubricating oil cool, but as a stationary installation there was no cooling effect other than the direct radiation from the pan, which proved insufficient.

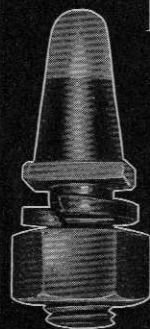
To correct this a cooler was developed, using a coil of ½-in. copper tubing, installed inside of a piece of 6-in. pipe 5 ft. long, the ends closed with flanges, and water from the unit circulated through this cooler, the oil from the engine being pumped through the cooler by means of the oil pump installed on the engine.

This has proved very satisfactory and keeps the lubricating oil temperature down to a point where it gives no trouble even under the severe conditions under which the engine operates.

The unit has been operating during temperatures that range as high as 116 degrees in the shade. The butane consumption is, on the average, about 2½ gal. per hour, at a cost of .07c per gallon and under present conditions the unit runs an average of five hours per day, which makes a monthly cost of between \$25 to \$30 as against \$200 to \$250 for electric power.

The unit, as equipped, is entirely automatic and is taken care of by one man, who does all the sprinkling.

**PHOENIX**  
*RED TIP*  
**TRACTOR  
SPUDS**



**Extra Long Service**

Made of special analysis steel, hardened by latest scientific heat treating methods. Sizes ¾" to 1½". Also Lawn Mower Spuds. Write for circular and prices.

**PHOENIX MFG. CO.**  
Joliet, Ill. Catasauqua, Pa.

**Club Event That Increases Play  
and Pro Business**

**G**EOERGE JACOBUS does one of the best jobs that's done of running a first class club's pro department. This, in addition to his duties as PGA president which take up early hours of the morning and the late hours of the night.

Here's a competitive idea George introduced at Ridgewood to the great enjoyment and interest of that club's members. It's an ideal event to boost week-day play and should be widely adopted.

The members challenge one another, paying 25c into a sweepstakes pool each time one plays a match. A member coming to the club and looking for a game can get one from almost anyone in this manner. He merely enters his name in the tournament, pays the 25c and turns in his score. Each member is permitted to do this as many times in a month as he wishes, except that when he has paid a

**F U L N A M E** Golf  
**M A R K I N G** Ball  
**P R O F I T A B L E !** is

Trial plan will bring outfit for demonstration.

Write for details.

**The Fulname Co., LeBlond Bldg.**  
CINCINNATI, OHIO