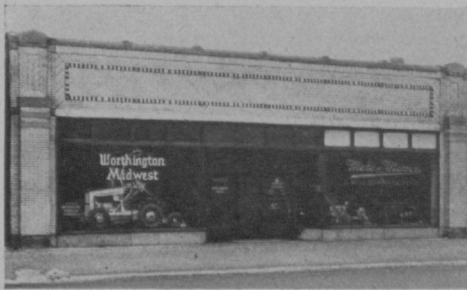


for \$8.50 irons and \$10 woods as features to distinguish pro shops from store type of golf trading posts.

He cites several instances of pros trading up members by figuring out that the difference between the average and top grade clubs amounts to only about two cents a game during the four year period the keen golfer will keep the set in action until he replaces it as obsolete.

**WORTHINGTON MOWER CO., STROUDSBURG, PA.,** has appointed the Worthington Midwest Co., as its distributors in Illinois, Wisconsin, Michigan, Indiana, Kentucky and sections of Iowa and Missouri. The Golf & Garden Equipment Co., of Milwaukee will handle Wisconsin by arrangement with the Worthington Midwest Co.

With the new Midwest organization is Leo Murray, veteran golf equipment and supply man, and Geo. Hodges, also well



known in the turf maintenance field. Murray's headquarters will be at the main Midwest factory branch, 1043 W. Washington Blvd., Chicago. Tel., Haymarket 8480. Hodges will divide his time between the Detroit office at 6432 Cass Ave. Tel., Madison 2405, and the Chicago office.

At the Chicago branch there will be complete service facilities, stocks and personnel. Nothing but equipment will be handled at this branch.

**BRUNSWICK - BALKE - COLLENDER CO., 623 S. WABASH AVE., CHICAGO,** has much instructive material on lawn bowling which will help golf clubs considering adding this sport to the club's facilities.

Several U. S. golf clubs and many in Canada and England have very popular lawn bowling greens for day and night use. Details of the game and its greens will be sent free on request.

**TORO MFG. CORP., MINNEAPOLIS, MINN.,** brings out another one of its colorful and amusing jungle course maintenance calendars. Ingenious equipment requiring brawny Negroes, elephants, and zebras is mowing a fairway alongside



You can't beat this as a sign of confidence in 1936 golf business. It's almost 80,000 True Temper shafts going to one of the leading clubmaking companies. Sending cars out like this in the spring means the cars won't be used by pros riding to Florida or California in the fall.

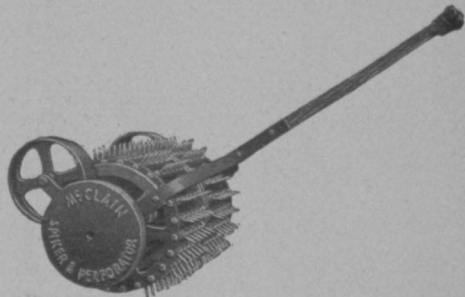
of which two fuzzy-wuzzy savages express the wish that Hagen were there to have his pants trimmed off. It will be good for laughs, even when the greenkeepers look at it to see how far it is until payday.

Horton Smith has resigned as Oak Park CC (Chicago district) pro to become a full time member of the A. G. SPALDING staff. Ren Smith, Horton's brother and assistant at Oak Park, is his successor as the club's pro.

Horton will play in tournaments, exhibitions and demonstrations as well as engage actively as a business representative of Spalding's to the pros. As he is widely known by pros, Horton is one of the ace pro businessmen as well as a star player and in this dual capacity is fitted to do a lot of good for the pros and Spaldings together.

**McCLAIN BROS. CO., CANTON, O.,** are placing a new spiker on the market. The device, say the makers, saves its costs many times.

A specially controlled oscillating motion of the spikes gives a slight stirring of the soil without injury to the turf. Unbreakable spikes are made of stainless steel and



riveted to oscillating bars so they cannot drop out. These spikes outwear ordinary steel spikes.

The Spiker is equipped with roller bearings to add to ease of operation. Lubrication is effected by Alemite oiling and

special spring tension leather grease re-tainers. Movement of the Spiker from one place to another is made easy by permanently attached large transport wheels.

Weight of Spiker may be increased by attaching extra weights included with machine as regular equipment. Price is very moderate.

**BASTIAN BLESSING CO., CHICAGO**, makers of bars and fixtures, now have New York headquarters at 635-639 Sixth Ave., corner 19th St.

Craig Wood has resigned as pro at Hollywood GC, Deal, N. J., to devote full time to duties as director of the golf dept. for the **DUNLOP TIRE & RUBBER CO.**, New York City. Wood joined the Dunlop organization in 1934 as director of the golf dept. He divided his time between designing clubs, working with the factory engineers on golf balls, tournament playing and teaching at Hollywood.

Now Craig will take a very active part in Dunlop's golf campaign—concentrating on the promotional end.

He will headquarter at 500 Fifth Ave., New York, working under Vincent Richards, general manager of the Sports dept.

His connection with Dunlop is similar to that of Gene Sarazen with Wilson and Horton Smith with Spalding. Not only will he play exhibitions, lecture and dem-

onstrate, but will participate in all the major tournaments.

**GOLF & GARDEN EQUIPMENT CO.**, 400 S. SEVENTH ST., MILWAUKEE, Wis., has been named Wisconsin and Minnesota agent for Worthington equipment by the Worthington Midwest Co., western distributors of the Worthington Mower Co. The Golf & Garden organization also is Wisconsin distributor for the Moto Mower Co., and in 1935 did a big business for Moto Mower.



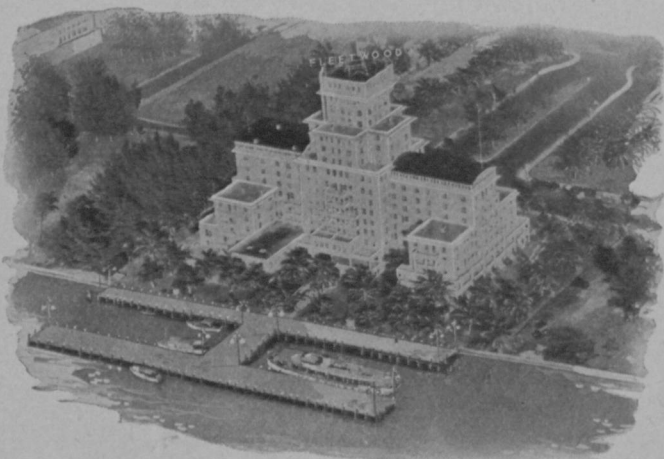
ARCHIE SCHENDEL

Archie C. Schendel, supt. of the Westmoor CC, is president of the Golf & Garden company, which was formed in 1933 as a subsidiary of Fertilizer Chemical Mills, Inc., for selling equipment, seed, fertilizer and other supplies and equipment to golf courses, parks, estates and cemeteries in Wisconsin and adjacent territory. Schendel has been in golf course and landscape work for 18 years and is

# For Your Winter Vacation--

## THE FLEETWOOD MIAMI BEACH

All rooms, are outside rooms, well ventilated and with ocean or bay out-look. Ocean bathing, warmed by the Gulf Stream, just off shore; a choice of ten fine golf courses, deep-sea fishing, boating, horse and dog racing, polo, tennis, etc., are available. A private bus to ocean beaches at no charge, hotel-operated motor boats, private dock and splendid parking facilities. Popular priced Coffee Shop and Excellent Food.



IN CLEVELAND IT'S THE HOLLENDEN  
IN COLUMBUS IT'S THE NEIL HOUSE  
IN AKRON IT'S THE MAYFLOWER  
IN TOLEDO IT'S THE NEW SECOR

IN DAYTON IT'S THE BILTMORE  
IN SAVANNAH IT'S THE OGLETHORPE  
IN AUGUSTA IT'S THE BON AIR  
"America's Finest Winter Resort Hotel"

widely known as a practical authority.

Bob Farmer, another well-known mid-western greenkeeper, recently joined the Schendel organization and at this time is giving special attention to underground sprinkling jobs, a field in which Farmer as greenkeeper and civil engineer has had extensive experience.

Service and parts dept. of Golf & Garden is in charge of Leroy Bertram, Schendel's assistant for 12 years.



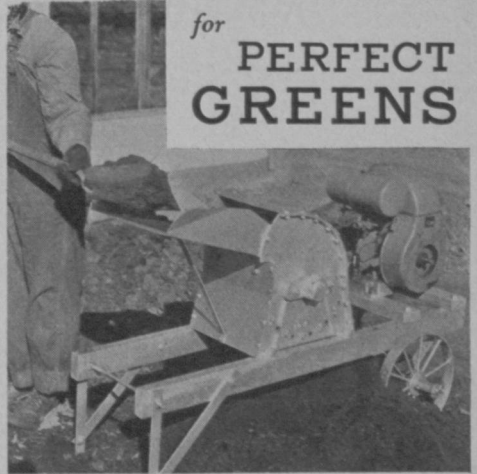
Each pro who orders a set of the new Hagen women's clubs and the special women's bag is given free this Hagen American Lady display stand. It sticks out in a shop and stirs up sales to women.

W-W GRINDER CORP., WICHITA, KANS., has a new compost grinder and mixer being introduced to the market. The Wichita will grind wet or very tough materials without clogging and grinds and mixes in one operation. It tears up tough, green sod and roots into a fine substance that will rot quickly. Dry manure, chemicals, peat moss, insecticides, etc., may be mixed and pulverized to the degree of fineness desired for any specific purpose; as the grind of the Wichita may be regulated for coarse or fine compost by the simple operation of removing a cotter-key, or by the use of the special grinding screen which comes with each grinder.

There is a small model, which may be operated by a three horse-power motor and which is just right for the owner of a small estate or small greenhouses. The

## PERFECT COMPOST

for  
**PERFECT GREENS**



The Wichita Compost Grinder, Shredder and Mixer is a new idea in compost preparation. In one operation it will not only grind, but it will mix manure, chemicals, peat moss and any other materials used in compost. Small or stringy materials can be ground and mixed together and come out in just the degree of fineness you desire. You can even grind wet and bulky materials with the Wichita. Write for low factory prices with full information and Illustrated Folder. W-W GRINDER CORP. Dept. D Wichita, Kans

### R. H. Tractor Wheel SPUDS

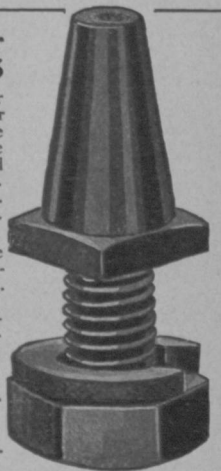
quickest to put on or take off. Increase tractor efficiency and cultivate turf . . . that's why more than half the U. S. and Canadian clubs use them. Durable and low priced. All sizes for all purposes.

Sample spud and circular on request; advise make of tractor and purpose for which intended.

Immediate shipment  
If your Ford or equipment dealer cannot supply, write direct to

### R. S. HORNER Geneva, Ohio

MFR. OF SPUDS, FORDSON WHEELS, ETC.



### ● BENT GRASS ● BOTH SOD AND STOLONS

Vigorous, healthy stock that develops fine, true putting surfaces. Write for full information.

### HIRAM F. GODWIN

Box A, Redford Sta.,  
Detroit, Mich.

R. F. D. No. 3,  
Pottstown, Pa.

## 1936 GOLF TURF on Request

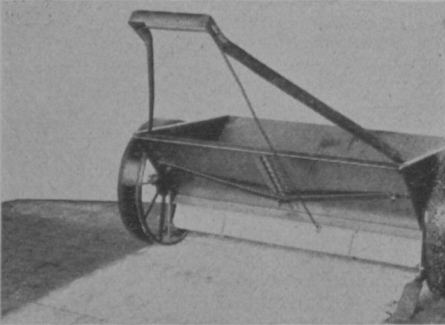
The new "Golf Turf" contains: information on turf maintenance, as well as a complete list of Golf Requisites, Fertilizers, Insecticides, Sprinkling and Irrigation Equipment.

Send for your copy NOW

*Stump & Walter Co*

132-138 Church Street (Cor. Warren St.) New York

## ROOT ALL PURPOSE SPREADER



### TOP-DRESSING, FERTILIZING, SEEDING

CUT your LABOR COST with this machine.  
For speed, economy and perfect application  
it is unexcelled.

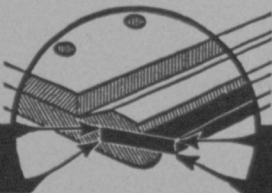
THE ROOT MANUFACTURING COMPANY  
1051 POWER AVE., CLEVELAND, OHIO

## SEE PAGE 38

Follow the instructions and your club will function smoother and make more profits during 1936.

## 1936 Budgets Can Be S-t-r-e-t-c-h-e-d with BUDDS

ARROWS in illustration point to BUDD'S 4 cutting edges. Simply switch blade for new edge.



Putting BUDDS on all your mowers means better, quicker cutting, radically reduced sharpening costs, and fewer lay-ups. Why not join the growing list of Clubs now using Budds—and divert some of your 1936 mowing appropriation to other needs. Write for details.

BUDD MFG. CO., DEPT. G, RAVENNA, O.

**BUDD**

**• BED • BLADES**

big 18-inch model, operating with seven horse-power or more, will grind from two to ten tons of compost per hour.

THE KROYDON CO., MAPLEWOOD, N. J., presents pros with several interesting new features that should make 1936 a great year for the company and its pro customers.

Kroydon has negotiated with one of the largest finance corporations in America to handle the Kroydon finance proposition. The plan will be worked as follows:

The pro will be given a card showing a definite unit, for instance a \$75.00 unit. The consumer will pay nothing down but will pay monthly installments for a period of fifteen or twenty months direct to the finance corporation. The pro will be given application blanks and all he needs to do is to get the signature of the man and his wife and the name of the customer's employer or his business. The finance corporation will then make an investigation and within twenty-four hours, if the man is entitled to credit, he will be asked to call at the office of the finance corporation for the money. This money will be paid in the form of a check, which he immediately endorses and the finance corporation mails the check to the pro. That concludes the deal as far as the pro or Kroydon is concerned.

Probably the most talked-of development made by Kroydon has been the Hy-Power shaft with "built-in power." The Hy-Power shaft has become so popular that for 1936, Kroydon announces increased volume in sales will enable them to offer a golf club fitted with the Hy-Power shaft at a greatly reduced price.

For example, Kroydon irons with the De Luxe blade and Hy-Power shaft, which sold during 1935 at \$8.35, in 1936 will be retailed for \$5.50. This new low price for irons is coupled with a corresponding decrease in price of the Kroydon Hy-Power wood to \$7.00.

Kroydon announces that other models in irons, with stainless steel heads and Hy-Power Shafts, will list at \$8.35, and a custom-built set of irons will be put on the market at \$10.00 per club. Kroydon

Hy-Power woods, in addition to the new \$7.00 club, will list at \$9.00 to \$12.50, with the popular Cruiser model selling for \$10.00.

Kroydon is also bringing out a de Luxe line of custom built woods with gold-plated Hy-Power shaft, listing at \$17.50 per club. These clubs will be packed in full-length, individual suede containers.

BILLY BURKE, pro at Country Club of Cleveland (O.), and 1931 National Open champion, has signed with the BURKE GOLF CO., Newark (O.), as general manager of its field promotion dept. Bill will do considerable field work in playing and merchandising, especially in connection with a new top grade line to be marketed under Billy's name.

IRON FIREMAN MFG. CO., PORTLAND, ORE., has a new automatic coal stoker for club cooking ranges. Thermostatic control of coal feed maintains for the chef any desired heat.

Alvin (Butch) Krueger joins Al Espinosa and Babe Didrikson on the staff of THE P. GOLDSMITH SONS, INC., CINCINNATI and has his name on Gold-



smith woods and irons in two price ranges. The Krueger woods are \$9 and \$6.50; the irons (flange soled) are \$7.50 and \$5.

Butch's performance identifies him as a

**BARROWS BENT GRASS CO.**  
 1100 1st Nat'l Bank Bldg.  
 Minneapolis

**NORTH WOODS BENT**  
 The Bent with the U. S. Patent

**ROYALTY CONTRACTS NOW AVAILABLE TO CLUBS**

TESTED **Radways** SEEDS  
 SINCE 1875

**GOLF GRASS**

"ALWAYS DEPENDABLE"  
 NEW YORK, N. Y.

**McCLAIN • SPIKER AND PERFORATOR**

Latest engineering features make this Spiker superior to others. Stainless Steel Spikes. Roller Bearings. Remarkable turf conditioner. Lessens Brown Patch. Increases grass growth. Hand or tractor operated. Moderate price. Needed on every Golf Course. Write for literature.

**McCLAIN BROTHERS CO.**  
 CANTON - - - OHIO

**NEW LIFE FOR GREENS & FAIRWAYS**

**"Lime Crest" CALCITE (Pulverized)**

does wonders in sweetening soil, making grass on greens and fairways grow lush and green. Finely pulverized high-calcium limestone—quick acting, long lasting. Write for full information. Limestone Products Corp. of America, Dept. 226, Newton, N. J.

**PHOENIX RED TIP TRACTOR SPUDS**

*Extra Long Service*

Made of a special analysis steel, hardened by the latest scientific heat treating methods. Sizes from 3/8 in. to 1/2 in. Also Mower Spuds. Inquiries invited.

**PHOENIX MANUFACTURING COMPANY**  
 Joliet, Ill. Catasauqua, Pa

**BARGAINS: Several Re-built  
Fairway and Greens Mowers**

Write for Complete Catalog—Get our  
prices before you buy anything

FLAGS  
AND  
POLES



HOLE  
CUTTERS  
CUPS

1936 will be  
**A GREAT IDEAL YEAR**

See the new heavy duty  
**IDEAL FAIRWAY MOWERS  
AND GREENS MOWERS**

*"Over-Nite" Service*

**EVANS IMPLEMENT CO.**

569-71 Whitehall S. W.  
ATLANTA, GA.

shining one of the youngster stars with a fine future ahead of him. An all-around athlete, he has been in pro golf only five years and is picked by Al Espinosa, head of the Goldsmith playing squad, as a youngster who will stay long when he lands at the top.

DECATUR PUMP CO., DECATUR, ILL., has a new Burks Niagarette pump especially suited for many golf club needs. Details will be sent on request.

A new corporation has been formed to handle the expanding business of the recently patented NORTH WOODS BENT. Ten men took all treasury stock offered in equal shares. The stockholders are:

J. S. Clapper, Pres., Toro Mfg. Co., Minneapolis, Minn.; R. M. Laird, Vice-Pres., American Chem. & Drug Co. Minneapolis, Minn.; John Diefenbach, Pres. Amber Milling Co.; James T. Williams, Pres., Creamette Co.; Croil Hunter, Vice-Pres. & Gen. Mgr., Northwest Airways; J. N. Winton, Winton Lumber Co.; Einar Berg, Mgr., Harris, Burrows, Hicks & Co.; Harold Genter, Waters-Genter Co.; Harrison R. (Jimmy) Johnston, Former Nat. Amateur Champion; Henry C. Mackall, Green-Chairman, Minikahda GC.

Officers of the corporation are Earle M. Barrows, president, J. S. Clapper, vice-president, Jimmy Johnston, treasurer and Henry C. Mackall, secretary.

R. H. ADAIR, 733 S. EUCLID AVE., OAK PARK, ILL., and Fred M. Schukraft have invented a Golf-O-Meter that registers distance and hook-or-slice on a dial set between the player's position and a one piece moulded rubber ball. Ball is re-teed after each shot by stepping on a button near the dial. This button also resets the dial to zero for distance, hook and slice.

A coin attachment which may be applied for amusement park use also is a feature.

**BE SURE YOU GET  
LEWIS GOLF BALL  
WASHERS  
for YOUR Course**

Standard throughout the world—more Lewis Washers in use than all other makes combined. See your greens committee Chairman about Lewis Washers for your course. (In color, only 25 cents additional).

Lewis Washers: lots of 1 to 10 (White) \$6.00  
In lots of 11 to 20 (White) \$5.50

Complete tee ensemble: (White) washer, tee stake, towel, waste container, tee data plate, towel and ring \$10.50.

Lewis Bag Rack and other Equipment.

**G. B. Lewis Company**  
Dept. GD-136 Watertown, Wis.



**It's Always Sharp**

Core of extra hard steel runs through center of spud. Softer outside steel wears first—keeping spud sharp until completely worn away. Will outlast ordinary spuds.—Good for the turf.

Write for Details.  
**DIAMOND CALK SHOESHOE CO.**  
4782 Grand Ave., Detroit, Mich.

**DIAMOND**  
Steel  
Center  
Tractor  
Spud

That Happy Combination of Quality and Economy is offered in our

**New Broadmoor One-Color  
Score Card**

Produced by a New Process, its price is \$21 for 5,000. The card, fully complete and comprehensive, is not small and the stock is heavy.

Samples to clubs on request  
**JOHN H. VESTAL CO., Printers**  
703 South La Salle Street - - - Chicago

# Reliable Guidance

When you're planning your purchases for 1936, you can depend on GOLFDOM'S pages. You can buy with confidence from its advertisers, sure of sound sources of supply. If you don't see what you want in display, find it in the list below. Draw a line through items interested in and mail the page to GOLFDOM, 14 E. Jackson Blvd., Chicago. It will bring you the facts and figures you need in planning a budget that works.

## FOR THE GOLF COURSE

Arsenate of lead  
 Bag racks for tees  
 Ball washers  
 Bent grass stolons  
 Bookkeeping systems  
 Brown-patch preventives  
 Charcoal (soil conditioner)  
 Clamps, for pipe leaks  
 Compost distributors  
 Compost sterilizers  
 Diesel engines  
 Drinking fountains  
 Dump carts  
 Fencing  
 Fertilizers  
 Fertilizers distributors  
 Hole cutters  
 Hole rims (putting cups)  
 Hole rims (sand green)  
 Hose, water  
 Humus (soil conditioner)  
 Hydraulic mixers  
 Insecticides  
 Lime, hydrated  
 Limestone, pulverized  
 Mole and gopher traps  
 Mole and gopher poisons  
 Mowers  
    putting green    tee  
    fairway    rough  
 Mower blades  
 Mower sharpening machines  
 Peat moss (soil conditioner)  
 Pipe  
    perforated for drainage  
    water  
 Playground equipment  
 Pumps (state capacity)  
 .....  
 Putting paths (sand green)  
 Putting cups  
 Rollers  
    fairway  
    green  
    spiked  
 Sand green equipment  
 Scythes (motor driven)  
 Seed  
    fairway  
    green  
    rough  
 Seeders  
 Shelters (golf course)  
 Skeet layouts

Sod cutters  
 Soil screeners  
 Soil shredders  
 Sprayers  
    barrel pump  
    power engine  
 Spike discs  
 Sprinklers  
    greens  
    fairway  
 Swimming pool information  
 Tee markers  
 Tractors  
 Tractor tires,  
    low pressure  
    pneumatic  
 Tractor wheel spuds  
 Water systems  
    for greens  
    for fairways  
 Water system engineer  
 Weed burners  
 Weed killers  
 Worm eradicators

Practice clubs  
 Practice driving devices  
 Prizes  
    cups  
    trophies  
 Rain jackets  
 Score cards  
 Shafts  
    hickory  
    steel  
 Shoes  
 Shoe spikes  
 Shoe trees  
 Sockettes  
 Sweaters  
 Sweat shirts  
 Tees  
    wood    celluloid  
 Trap-shooting    traps  
    shells    targets  
 Underwear

## FOR THE PRO SHOP

Bags  
    canvas  
    leather  
 Balls  
    .35    .50    .75  
 Ball marking machines  
 Belts  
 Bookkeeping system  
 Buffing motors  
    A.C.    D.C.  
 Caddie badges  
 Caddie uniforms  
 Calks for golf shoes  
 Caps  
 Clubs  
    Brassies    Drivers  
    Irons    Matched sets  
    Putters    Spoons  
    Women's  
 Club racks for pro shop  
 Gloves  
 Grip dressing  
 Grip wax  
 Handicap  
    racks    cards  
 Hats, duck with vizor  
 Leather jackets  
 Leather preservative  
 Movie cameras, projectors

## FOR THE CLUBHOUSE

Ales  
 Bar equipment  
 Bath slippers  
    paper    wood  
 Bars  
    fixed  
    portable  
 Bath towels  
 Beer  
    bottle  
    draught  
 Beer cooling equipment  
 Cash registers  
 Cheese  
 Deodorants  
 Disinfectants  
 Kitchen equipment  
 Laundry equipment  
 Liquors  
    gin  
    whiskey  
    wine  
    mixers  
 Linens  
 Lockers  
 Mineral water  
 Refrigerators  
 Rugs—runners for aisles  
 Showers  
 Soda fountains  
 Water coolers  
 Water softeners

Club .....

By ..... Club Position .....

Address .....

Town ..... State ..... Date .....

● IMPORTANT—FILL OUT FORM ON REVERSE OF THIS PAGE ●

# Worth it . . . isn't it?

A minute of your time will make sure your officials and department heads listed below are kept posted on the smart, new management and operating methods constantly developing in the golf field. Fill in their names and addresses below just as soon as you know who these heads will be for 1936 and mail to GOLFDOM, 14 E. Jackson Blvd., Chicago. You understand, there's no subscription price whatsoever. Thank you!

Please PRINT plainly. Home or business addresses preferred.

President .....

Address .....

Green-chairman .....

Address .....

Manager .....

Address .....

Professional .....

Address .....

Greenkeeper .....

Address .....

Club .....

Town ..... State .....

Number of Holes ..... Is Course Private, Daily Fee or Municipal? .....

*Please give us this additional information for our records:*

Swimming Pool?.....How Many Tennis Courts?.....Trapshooting or Skeet?.....



## Classified Ads

Rates: 10 cents a word per issue. Minimum charge \$2.50

This ad is paid for by an official of a club for which one of the finest young pros has worked. The young man's record, ability and character qualify him to serve with satisfaction any first class and exacting golf club. The club with which he has been connected is in financial difficulties and cannot provide him with the opportunities he merits. He has resigned and carries with him the strongest endorsement of each member and official, all of whom are anxious to see him get a place that he deserves. His salary requirements are very reasonable but the job must be one where an able, active, conscientious young man can make a fair living for his wife and himself and have chance of advancement. Full details, or interview, to interested officials. Address: Ad 150, % Golfdom, Chicago, Ill.

**Greenkeeper**—will go any place. Scotch. 25 years experience, 7 years gardening and green-keeping in Scotland; 18 years' head greenkeeper in this country, 8 years in last position. Well up in construction work. Private, Public or municipal. Moderate salary. Address: Ad 170, % Golfdom, Chicago, Ill.

**Club Manager**—Club in Suburban Cleveland desires services of competent manager. Knowledge of fundamentals of financial operations is essential qualification. Must be good dining room operator. Splendid opportunity to build for future rather than expect large immediate remuneration. Residence furnished on grounds. State salary, qualifications and details. Address: Ad 110 % Golfdom, Chicago.

**Salesmen:** Wanted reliable men with good references calling on professionals with other lines to sell well known nationally advertised imported golf ball on commission, in San Francisco, also Ohio, western Pennsylvania, Michigan, Missouri, and adjoining territory. Address: Ad 105, % Golfdom, Chicago.

**Professional**—Four years at present southern club desires change. Age 27, college trained, experienced and competent all departments club operation. Good organizer and membership promoter. Proven teaching ability; expert clubmaker and merchandiser. Thorough knowledge course maintenance. Reference present officials. Address: Ad 140 % Golfdom, Chicago.

**Professional** wishes new connection for 1936. Age 32, American, good habits, Class A member of P.G.A. Resultful instructor, fine player with successful record as business builder for club where employed. Good credit rating. Best of references. Address: Ad 111, % Golfdom, Chicago, Ill.

**Wanted:** Position as Pro-greenkeeper. 26 years experience. Thorough understanding of soil condition, the use of fertilizers, eradication of peats and fungi; also experienced in golf course construction and drainage, care of shrubbery, etc. An excellent teacher and clubmaker. Wife capable of taking charge of clubhouse. At present employed at southern club. Would be interested in summer resort or club for the whole season or year. Will go anywhere. Address: Ad 116, % Golfdom, Chicago, Ill.

**Experienced,** reliable man wanted as pro-greenkeeper-manager of 18-hole fee course in midwest. Must be a worker with ambition and ideas for increasing business. An opportunity for a live man. Address: Ad 137, % Golfdom, Chicago, Ill.

**Greenkeeper**—A national practical authority at famous course, desires change. Course internationally known for fine condition and moderate maintenance budget. This greenkeeper has pioneered in several important phases now generally recognized as first class maintenance essentials. Logical reasons for wanting a change. Ideally qualified for club that wants highest standard of course condition. Address: Ad 148, % Golfdom, Chicago, Ill.

**Pro** desiring change—24 years old, single. Six years experience. Expert teacher and player. Hard worker who can increase club play. Consider good assistant job. Address: Ad 123, % Golfdom, Chicago.

**Scotch-born Pro-Greenkeeper** with over 25 years experience would like to contact year round job. Thorough knowledge of grasses, soils and course upkeep. Fine record as instructor. Could take management of club as wife is experienced cateress. Excellent references. Will go anywhere. Write: R. B. P., 1419 Columbia Road, N. W., Apt. 24, Washington, D. C.

**Manager**—Twenty years successful experience in club and hotel work, at present employed as club manager by large industrial firm, wants position at golf club where expert operation of front and back of house will have needed result of increasing club membership and patronage. Highest references as to ability, performance and character. For details write: Ad 141, % Golfdom, Chicago.

**Responsible greenkeeper** wants year around position with good club. Twenty years experience, including National Open, economical construction, maintenance, expert mechanic. Excellent references. Go anywhere. Address: Ad 135, % Golfdom, Chicago.

**Wanted** position as greenkeeper by ambitious young man 25 years of age. Married. Ten years experience in all lines of work. Can give good references as to ability and character. Address: Ad 133, % Golfdom, Chicago.

**Pro-Greenkeeper** desires change. Seven years at present club. Dependable character, excellent references in regard to course upkeep, teaching and shop activities. High credit rating. Class A member P. G. A. Club finances make change desirable. Address: Ad 1005, % Golfdom, Chicago.

**Working greenkeeper** wanted by 9-hole 3200 yard course in Illinois. Bent greens. Two other good workmen on course. Salary \$85 a month. March 15—November 1. Address: Ad 164, % Golfdom, Chicago, Ill.

**Opening for experienced greenkeeper** or pro to take full charge of nine hole course and clubhouse in Wisconsin. State full particulars, experience and references. Address: Ad 163, % Golfdom, Chicago, Ill.

**NOTICE:** Is there a golf or country club looking for a professional or a professional-greenkeeper with 25 years experience who is well qualified and well-known? Will furnish the very best of references. Will consider a combination—wife has had 18 years experience as manager and hostess. Available at once. Communicate with E. W. Harbert, 63 Fairfield St., Battle Creek, Mich.

**Pro-Assistant**—desires position for season of 1936. Five years practical experience. Presentable appearance, good character. Excellent references. Moderate salary; anywhere. Address: Ad 118, % Golfdom, Chicago.

**Pro-Greenkeeper**—22 years experience desires position. High class teacher. Thorough knowledge of golf course maintenance or construction. Expert on tournament conducting and grass fungi. A1 references. Address: Ad 130, % Golfdom, Chicago.

**Competent Class A Professional** wants location. Hard worker, good teacher and player; knows the business. Good personality; will work for the interest of the club. Very best references—thru the experimenting days. 39 years old. Address: Ad 115, % Golfdom, Chicago, Ill.

**Pro-Young** but with sound experience and good record in golf, college and merchandising experience, good character and appearance wants position as pro at small club where intelligent hard work is required, or as assistant with pro at larger club. Address: Ad 162, % Golfdom, Chicago, Ill.

**Pro-** with successful experience as operator of daily fee and municipal courses and as pro-greenkeeper at private clubs desires position. Also has had outside business experience and knows how pro department should be run as a business asset of club. Age 41, married. Address: Ad 160, % Golfdom, Chicago, Ill.

PUBLICATION OFFICES: 14 E. JACKSON BLVD., CHICAGO, ILL.  
Tel.: HARRISON 5942

Editor  
HERB GRAFFIS

Adv. Mgr.  
JOE GRAFFIS

Managing Ed.  
JACK FULTON, JR.

Eastern Rep., ALBRO GAYLOR  
20 Vesey St., New York City  
Tel.: COrlandt 7-4031

Central Rep., RAWLINS & HUNT  
333 N. Michigan Ave., Chicago  
Tel.: RANdolph 6225

## CONTENTS

Working with Weather, by Clinton K. Bradley.....	9
Selling Stunts, by Robert N. Pryor.....	11
NAGA Priming for Cleveland.....	13
Greenkeeping Short Course Dates.....	14
In The Rough with Herb Graffis.....	15
Pro Collection Problem is Club Weakness.....	17
PGA Points with Pride, by Herb Graffis.....	19
Managers to Meet at Waldorf.....	28

## ADVERTISERS' INDEX

Acushnet Process Company.....	27	National Association of Greenkeepers.....	4
Barrows Bent Grass Co.....	35	Pennsylvania Lawn Mower Works.....	3
Bayer-Semesan Co., Inc.....	6	Phoenix Mfg. Co. ....	35
Buckner Mfg. Co. ....	2	Professional Golfers' Ass'n.....	29
Budd Mfg. Co., The .....	34	Radway McCullough Seeds .....	35
Diamond Calk Horseshoe Co.....	36	Root Mfg. Co. ....	34
Evans Implement Co. ....	36	Sewerage Commission, The.....	3rd Cover
Fate-Root-Heath Co. ....	2	Scott & Sons Co., O. M.....	3rd Cover
Fleetwood Hotel .....	32	Skinner Irrigation Co.....	3rd Cover
Florida Humus Co. ....	6	Spalding & Bros., A. G.....	20-21
Godwin, Hiram .....	33	Staude Mak-A-Tractor Co., E. G.....	6
Horner, R. S. ....	33	Stumpp & Walter Co.....	34
International Harvester Co.....	2nd Cover	Toro Mfg. Co.....	5
Kroydon Company .....	25	U. S. Rubber Co.....	4th Cover
Lewis Co., G. B.....	36	Vestal, John .....	36
Limestone Products Corp. of America.....	35	W-W Grinder Corp.....	33
Links, The .....	7	Wilson Sporting Goods Co.....	8
McClain Brothers .....	35	Worthington Mower Co. ....	1
Milorganite .....	3rd Cover	Young Golf Co., L. A.....	23