

being more sanitation; lower upkeep; ball will not stick in washer; no splashing; ball drier when ejected; rustproof and theftproof construction. Priced competitively, the washer is guaranteed for ten years.

**CANVAS PRODUCTS OFFERS LATE STYLED BAGS FOR PRO TRADE**

Fond du Lac, Wis.—Seven years intensive experience in the manufacture of both canvas and leather golf bags has convinced officials of the Canvas Products Co., 19 E. McWilliams st., that their 1935 line of golf bags is superior to anything the company has issued heretofore and will meet with the hearty approval and support of the golf pros.

With reference to Canvas Products' pro-only line, Arnold F. Firlie, sales dept., says:

"In the new 1935 line which is now being announced, the same policy is being carried out as has been from the beginning, to manufacture bags for the professional trade. The quality will be on a plane with the high character of bags demanded by the professional trade, but priced low to enable the pro to compete with the store trade. This company manufacturers specials in keeping with this policy, thus permitting the pro trade to offer bags in competition with store prices."

The company has issued a catalog which not only pictures all items in its bag line, but also shows interesting views of the factory with workmen doing various operations on the bags. A copy will be sent on request.

**SILVER KING TRACTOR DETAILS OFFERED COURSE OFFICIALS**

Plymouth, Ohio—The Silver King golf course tractor, recently announced by Fate-Root-Heath Co., manufacturers of gasoline and Diesel industrial locomotives



and the Peerless mower sharpener, is proving of considerable interest to course maintenance officials.

Ruggedly built and with features not found in the average golf course tractor,

**1 DAY  
OR  
3 WEEKS**

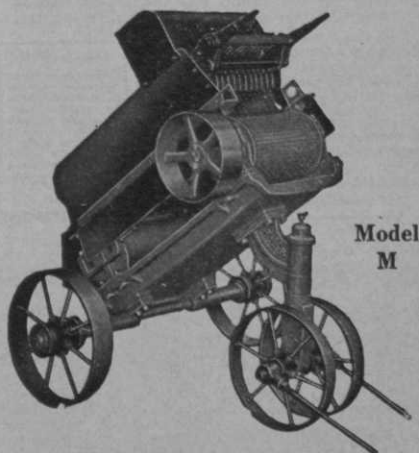
“

White Plains, N. Y.

After using the Rotary Machine for two years, I find that the Royer will do as much work in one day as the former machine did in three weeks, and do it better.

Fenimore Country Club,  
Edw. M. Bernstein, *Chr. Grs. Comm.*

”



Model  
M

Which method is your club using to prepare compost? The old expensive and costly or the modern, MONEY and LABOR saving ROYER method?

Investigate the  
**ROYER**

*Sold thru leading  
Golf Equipment Dealers*

**R O Y E R**  
**FOUNDRY & MACHINE CO.**  
158 Pringle St.                      Kingston, Pa.



**END BROWN PATCH AND SOIL VERMIN TROUBLES  
THIS YEAR. LEARN ABOUT DOUBLE ECONOMY  
FUNGOL. SEND FOR TESTING SAMPLE**

Greenkeepers and Club Managers everywhere are finding it profitable to do some real figuring on the Brown Patch and Soil Vermin question.

A lot of money is spent each year—and a lot can be saved if you adopt the use of FUNGOL on your Greens.

The rapid increase in the general use of FUNGOL is due to its high effectiveness for control of both Large and Small Brown Patch, and the eradication of Earthworms, Cutworms, Sod Webworms, Grubs, etc.

Note this: Each pound of FUNGOL treats from 3,500 to 7,000 square feet of Green. This big covering capacity, with the added soil vermin control, is your saving. It will pay you to investigate.

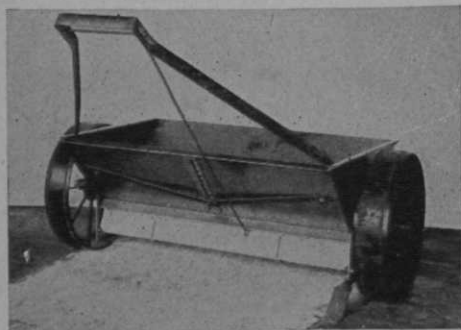
Send for complete details, application schedules and free testing samples of FUNGOL and VEG-E-TONIC.

**McCLAIN BROTHERS COMPANY**  
127 Second Street, Canton, Ohio

**VEG-E-TONIC**

Dissolves in water. Recognized supreme Putting Green fertilizer. Complete, cool, grass food. Nitrogen, Phosphoric Acid and Potash in highest formula. No useless fillers. Maintains strong grass growth at low cost. Will not burn or streak grass.

**ROOT ALL PURPOSE SPREADER**



**TOP-DRESSING, FERTILIZING, SEEDING**

CUT your LABOR COST with this machine. For speed, economy and perfect application it is unexcelled.

**THE ROOT MANUFACTURING COMPANY**  
1051 POWER AVE., CLEVELAND, OHIO

**CREEPING BENT GRASS  
SOD AND SOLONS**

Improved Washington Strain From Our Own Nursery. Phone, Write for Full Information.

**ROBERT F. ZWERG and SON**

Phone: Fairchild 6418  
Arlington Heights, Madison, Wisc.

the Silver King meets mowing conditions of practically 99% of the golf courses of the country, the makers say. It is small, light weight, flexible, agile, powerful, economical to operate, and low in first cost.

Tractor comes fully equipped with electric starter, horn and electric lights, thus permitting night mowing, etc. Four-speed transmission; speed range 2 1/4 to 25 miles per hour; V-shape radiator; and large automotive-type steering wheel are other selling points.

Full details concerning prices, demonstrations, etc., may be had by writing direct to the company at Plymouth, Ohio.

**POTTER HAS NEW GOLF GLOVE  
AND CLUBHEAD COVERS**

Peoria, Ill.—Harley O. Potter Co., makers of the popular Glovettes for golf use, this year is introducing a new all-weather "True Grip" golf glove. The glove has the same tapered finger construction as the Glovette, which prevents the finger ends from stretching out and rolling back. The True Grip glove retails for \$1, with a good margin for the pro.

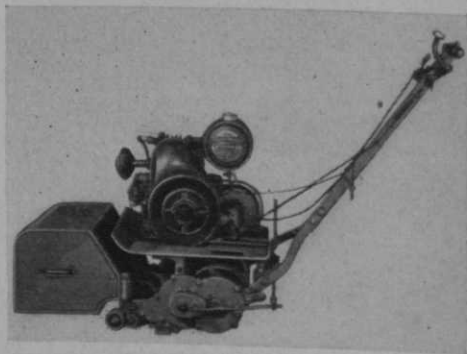
Potter also brings out this year Indicator clubhead covers, made of leather which is not affected by weather or moisture and which are easily put on or taken off the club. Kind of wood encased is indicated by markings on the covers. Retail price of these covers is 55 cents. Pro margin is good.

**MOTO-MOWER BRINGS OUT NEW  
GREENSKEEPER MOWER**

Detroit, Mich.—A new power putting green mower, the Greenskeeper, has been put on the market by The Moto-Mower Co., 4600 Woodward ave. Its makers remark:

"This mower is built of aluminum. The side frames, cutter bar and some other minor parts of this mower are made of Bohn non-breakable aluminum castings.

"Clutch and engine can be operated by the throttle or clutch lever mounted on



the handle. This is a feature which we have added this year and which is very novel as by hooking the small snap in the ring on the handle bar both the

throttle and the clutch can be operated by raising or lowering the handle. When a man gets to the end of his cut on his putting green, it is the tendency to bear down to turn the mower around. When he does this, he automatically throws out the clutch and closes the throttle on the engine so that the engine does not race at the end of the cut when the clutch is thrown out. In starting he slightly raises the handle which throws in the clutch and gives the engine additional speed, thus avoiding any marking of the greens or pounding of the engine when the mower is being turned around idle.

"This mower is also equipped with a putting green brush."

**FORGAN, ST. ANDREWS, PRESENTS PRINCE WITH DE LUXE CLUBS**

St. Andrews, Scotland.—As a wedding present to Prince George and in commemoration of his new title of Earl of St. Andrews, R. Forgan and Son, Ltd., gave His Highness a complete set of their De Luxe clubs made in St. Andrews.

**BOB THOMAS NOW ACTIVE HEAD OF CARRIER BUSINESS**

Granger, Ind.—Lyman Carrier last fall accepted appointment in the Soil Erosion service, Dept. of Interior, Washington, D. C. Twenty years of service in the Dept. of Agriculture has acquainted him with routine and at present makes his work invaluable. Robert Thomas, formerly supt. of Lyman Carrier Products has taken over active management of all departments of this firm. Thomas states the same sources of Cocoos bent seed and Lecco grass food are being maintained, guaranteeing the same quality material as in the past. Bob was sold out completely in stolons and bent sod last fall, the best season in the past four years. His new crop will be available for spring and fall delivery this year.

**U. S. NEW BALLS HAVE EXCLUSIVE RUBBER THREAD INNOVATION**

Passaic, N. J.—Perfection of a new process by which rubber thread can be made direct from liquid latex, the natural milk of the rubber tree, for use in winding golf balls to give them greater distance, is announced by the general laboratories of the United States Rubber Co.

The new thread, reflecting both the material from which it is made and the process of making, is known as spun latex. Its use represents a notable innovation since the idea of thread winding was conceived 37 years ago.

This process, it is claimed, produces a thread of many superior qualities. The following claims are made; stronger; more uniform; can be made in unlimited length and in any desired shape; can be wound more tightly; and has longer life. Because



**NEW SPRINKLER EFFICIENCY**

*Available also without roller base*

**Rain King**

**The Best Sprinkler Made**

*Throws more water*

1600 gallons per hour at 60 pounds—20% more than other sprinklers by actual test. Two interchangeable, new, patented 3-jet nozzles for all pressures above 30 pounds. Special nozzle available for very low pressures.

*Throws Water Farther*

No obstructions to hinder free passage of water. Perfect distribution of water over any circle up to 150 feet.

Complete even coverage. Can't stall. New Rain King three-jet nozzle has spinning vibrator that prevents stalling even on hillsides or in high winds.

Instantly set to turn at any speed desired—even as slow as 30 revolutions per hour. Oversize phosphor bronze bearings. Unbreakable. Good looking. PRICED RIGHT. Write for complete information on this new, improved Model E Rain King and Quick Coupling Valves.

MADE AND GUARANTEED BY

**CHICAGO FLEXIBLE SHAFT CO.**

5515 Roosevelt Road, Chicago

45 Years Making Quality Products

**The New 1935**

**TWIN PAX**

- *New models—new features*
- *More attractive—lighter weight*

Last season's bag sensation ready to repeat in 1935. Increased manufacturing facilities insure prompt filling of your order. Write, **Des Moines Glove & Mfg. Co., Des Moines, Iowa.**

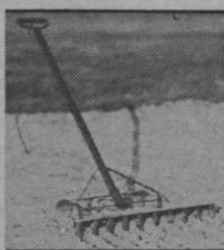
## LEVEL-ALL Sand Trap Rake

**A Quicker, Better Way to rake traps**

Does away with all foot-prints and other trap scars. Level at all times. Forces player to use niblick out of trap. Easily operated—adjustable groove depth.

Write for literature

**E. J. BACIGALUPI**  
32 FORMAN STREET  
RED BANK, N. J.



## Lime Crest Calcite

(PULVERIZED)

**Lime Crest** A PERFECT natural carbonate of lime which will do wonders for your grounds and fairways. Will act quickly, because it consists of very finely divided particles in crystalline form. Yet LIME CREST Calcite positively will not injure vegetation and can be applied at any time in any amounts. Influence on the soil is sweetening, so benefits from all applications are permanent.

For lasting, low-cost improvement of golf courses, use LIME CREST Calcite (pulverized).

**LIMESTONE PRODUCTS CORP. OF AMERICA** Dept. K-5 Newton, N. J.



## PHOENIX RED TIP TRACTOR SPUDS

*Extra Long Service*

Made of a special analysis steel, hardened by the latest scientific heat treating methods. Sizes from  $\frac{3}{8}$  in. to  $\frac{3}{4}$  in. Also Mower Spuds. Inquiries invited.

**PHOENIX MANUFACTURING COMPANY**  
Joliet, Ill. Cafasauqua, Pa.

That Happy Combination of Quality and Economy is offered in our  
**New Broadmoor One-Color  
Score Card**

Produced by a New Process, its price is \$21 for 5,000. The card, fully complete and comprehensive, is not small and the stock is heavy.

Samples to clubs on request

**JOHN H. VESTAL CO., Printers**  
703 South La Salle Street - - - Chicago

of its uniformity and ability to be wound more tightly, it provides a golf ball with greater distance.

Development of spun latex emphasizes the present trend of the rubber industry toward manufacturing direct from liquid latex. The first bulk shipment of liquid latex was imported in steamer tanks from the Malay peninsula in 1922. This year American industry will use ten million gallons.

Distribution of the U. S. Rubber Co. new balls through the pro trade will be begun in the near future, according to the first advertising tip-off on the new ball which is made on the back cover of March GOLFDOM.

## TORO ISSUES NEW TRACTOR AND MOWER CATALOG

Minneapolis, Minn.—Toro Mfg. Co. will send free on request to those responsible for purchase of course maintenance equipment an informative catalog giving illustrations and complete details of Toro's 1935 fairway mowers and tractors.

The trend today in tractors, says Toro, is very definitely towards lighter weight, more speed, and rubber-tired wheels.

For 1935 Toro has made a number of worthwhile improvements in tractors and gang mowers. New and stronger wheels, larger tires, and greater ease of operation are a few of the improvements built into 1935 machines. For rough cutting, a new sickle bar has been added, which is interchangeable with gang mowers, and permits one machine to be used for both types of work.

## DOUBLE-BALANCE FEATURES DUNLOP'S NEW CLUBS

New York City—New features of the Dunlop Gold Cup personal model irons designed by Craig Wood is the double-balance blade. These irons have a compact flange sole blade with the weight located at the proper impact spot for the club and shot to be played.

Craig has experimented extensively with this idea on duffers and stars and feels that the results of these tests were such that they get the new line off to a flying start as scoring aids for any type of player. He figures that control and power are rightly balanced for performance. Heads of irons are in satin chrome

## ● BENT GRASS ●

BOTH SOD AND STOLONS

Vigorous, healthy stock that develops fine, true putting surfaces. Write for full information.

**HIRAM F. GODWIN**

Box A, Redford Sta.,  
Detroit, Mich.

R. F. D. No. 3,  
Pottstown, Pa.

# IT WON'T BE LONG NOW!

The season's long parade of golfers will soon start their march through your clubhouse and pro-shop and over the course. Are you ready for them? Have you seen to your early purchasing. If not, delay no longer, for regular routine duties will soon take up your time.

Whatever your needs, GOLFDOM'S advertising pages will serve as a dependable guide to reliable sources of supply. Mention GOLFDOM when you write these advertisers. If you can't find what you need, refer to the list below. Draw lines through items on which you want complete information and prices. Mail to GOLFDOM, 14 East Jackson Blvd., Chicago. It will bring you facts and figures you need in making your purchases.

## FOR THE GOLF COURSE

Ant eradicators  
Arsenate of lead  
Bag racks for tees.  
Ball washers  
Bent grass stolons  
Bird houses  
Bookkeeping systems  
Brown-patch preventives  
Charcoal (soil conditioner)  
Chickweed eradicators  
Compost distributors  
Compost mixing machines  
Drinking fountains  
Dump carts  
Fencing  
Fertilizers  
Fertilizers distributors  
Flags, flag poles  
Flood lights  
 for putting greens  
 for driving range  
 for parking spaces

Furniture  
Hole cutters  
Hole rims (putting cups)  
Hose, water  
Hose boxes (underground)  
Humus (soil conditioner)  
Hydraulic mixers  
Insecticides  
Mole and gopher traps  
Mole and gopher poisons  
Mowers  
 putting green  tee  
 fairway  rough  
Mower blades  
Mower sharpening machines  
Peat moss (soil conditioner)  
Pipe  
 perforated for drainage  
 water  
Playground equipment  
Pumps (state capacity)  
.....  
Putting cups  
Rakes, adjustable, for traps  
Rollers  
 fairway  
 green  
 spiked  
Scythes (motor driven)  
Seed  
 fairway  
 green  
 rough  
Seeders  
Shelters (golf course)  
Sod cutters  
Soil screeners

Soil shredders  
Sprayers  
 barrel pump  
 power engine  
Spike discs  
Sprinklers  
 greens  
 fairway  
Sprinkling carts  
Swimming pool information  
Tee data plates  
Tee markers  
Tile, drainage  
Tractors  
Tractor tires,  
low pressure  
pneumatic  
Tractor wheel spuds  
Water systems  
 for greens  
 for fairways  
Water system engineer  
Weed killers  
Worm eradicators

Motion picture cameras  
Motion picture projectors  
Practice driving devices  
Practice nets  
Prizes  
 cups  
 trophies  
Rain jackets  
Score cards  
Shafts  
 hickory  
 steel  
Shoes  
Shoe spikes  
Shoe trees  
Sockettes  
Sweaters  
Sweat shirts  
Tags for bags  
Tees  
 wood  celluloid  
 rubber  
Underwear

## FOR THE CLUBHOUSE

Ales  
Bar equipment  
Bath slippers  
 paper  wood  
Bars  
 fixed  
 portable  
Bath towels  
Beer  
 bottle  
 draught  
Beer cooling equipment  
Cash registers  
Cheese  
Deodorants  
Disinfectants  
Ginger ale  
Health scales  
Kitchen equipment  
Laundry equipment  
Liquors  
 gin  
 whiskey  
 wine  
 mixers  
Linens  
Lockers  
Mineral water  
Refrigerators  
Rugs—runners for aisles  
Showers  
Soda fountains  
Water coolers  
Water softeners

## FOR THE PRO SHOP

Archery golf supplies  
Bags  
 canvas  
 leather  
Balls  
 .25  .35  .50  
 .65  .75  1.00  
Ball marking machines  
Belts  
Bookkeeping system  
Buffing motors  
 A.C.  D.C.  
Caddie badges  
Caddie uniforms  
Calks for golf shoes  
Caps  
Clubs  
 Brassies  Drivers  
 Irons  Matched sets  
 Putters  Spoons  
 Weighted practice  
 Women's  
Club racks for pro shop  
Garters  
Gloves  
Grip dressing  
Grip wax  
Handicap  
 racks  cards  
Hats, duck with vizor  
Leather jackets

Club.....

By..... Club Position.....

Address.....

Town..... State..... Date.....

● IMPORTANT -- FILL OUT FORM ON REVERSE OF THIS PAGE ●

# IF GOLFDOM HELPS YOU —HOW ABOUT YOUR PALS?

We're willing to bet each issue of GOLFDOM tips you off to some hunch that makes your official duties a little easier or more effective. That's why this magazine is published—to broadcast the news of the golf business world. It is specifically aimed at the five officials named below in every club in the U. S.

If you get good from these pages, how about your fellow officials? Are they on our mailing list so they too can keep posted through GOLFDOM? Perhaps we haven't been notified of your organization's latest elections or appointment. Better do them a favor by tearing out this page and mailing it, filled in, to GOLFDOM, 14 East Jackson Blvd., Chicago.

*Please PRINT plainly. Home or business addresses preferred.*

President .....

Address .....

Green-chairman .....

Address .....

Manager .....

Address .....

Professional .....

Address .....

Greenkeeper .....

Address .....

Club .....

Town ..... State .....

Number of Holes ..... Is Course Private, Daily Fee or Municipal? .....

weather-protected finish. The iron shafts are Hy-Power with dark walnut sheathing. They have 16-in. rubberized, perforated calf leather grips. The Dunlop Gold Cup Craig Wood personal model woods have True Temper shafts and highly polished heads in contrasting shades of walnut.

Both men's and women's sets are available and sale is restricted to pro-shops. The woods will retail at \$10 each and the irons at \$8.50 each.

Pro sales have started out on the new lines at a rate highly satisfactory to Craig, Vinnie Richards, head of the Dunlop sports division, and the rest of the staff.

**CHICAGO FLEXIBLE BRINGS OUT MODEL G RAIN KING**



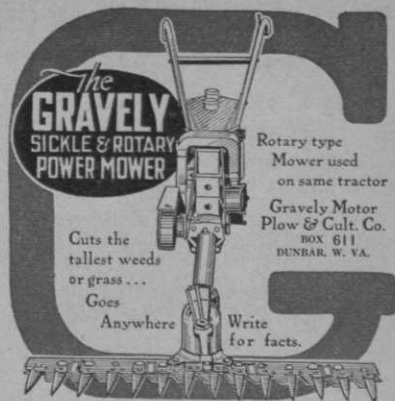
Chicago, Ill.—A new type sprinkler for tees, greens and club grounds has just been announced by Chicago Flexible Shaft Co. This new sprinkler, say the makers, is to be known as the Model G Rain King and throws any known kind of spray over circles 12 to 120 feet. It is patterned after the the company's Model E Big-Job Rain King. Has new patented 2-jet nozzle with spinning vibrator that makes sprinkler stall-proof even on slopes or in high winds. Nozzle also has convenient lever for breaking up spray—coarse or fine—and for regulating distance.

Model G is priced at \$3.50, east of the Rockies.

**PENFOLD WELDS THIN TOUGH COVER ON NEW BALL**

New York City—Penfold Golf Balls, Inc. feature for 1935 the Penfold chemically-welded cover which the inventor, Albert E. Penfold, British golf ball genius, says gives a thin cover the toughness of the ordinary thick golf ball cover as well as preserves liveness of cover and insides because of absence of heat in the cover application process.

Chemical action shrinks the cover into place, compressing the core and welding the cover and core evenly and permanently together, states Penfold. Furthermore, he maintains, the chemical treatment vul-



**SAVE** for your club by purchasing acclimated, winter-hardy

**BENT GRASS SEED**

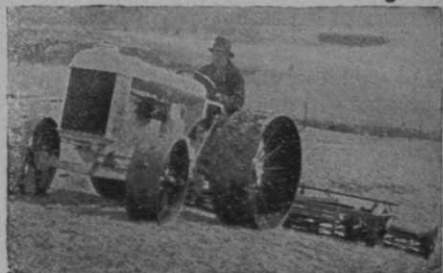
Direct from the farms where it is grown.

**A. N. PECKHAM, Kingston, R. I.**

15 Years' Satisfactory Service  
Also Fairway Mixtures

**FOR FORDSON TRACTOR**

**R. H. Wheels are stronger!**



Rims do not bend—50% better traction—rounded edges—easier steering. Hundreds used for replacing old, injurious wheels. Sold in singles, pairs or full sets.

**R. H. Tractor Wheel SPUDS**

quickest to put on or take off. Increase tractor efficiency and cultivate turf . . . that's why more than half the U. S. and Canadian clubs use them. Durable and low priced. All sizes for all purposes.

Sample spud and circular on request; advise make of tractor and purpose for which intended.

Immediate Shipment  
If your Ford or equipment dealer cannot supply, write direct to

**R. S. HORNER**  
Geneva, Ohio



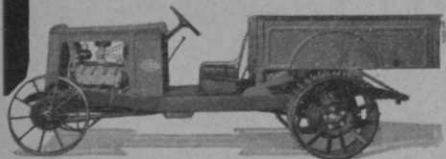
## STAUDE General Utility Tractor

**\$495 to \$795**

Attachments only for Ford Models T. A. and V-8—\$155 and up. Money back guarantee.

WRITE FOR DETAILS

**E. G. Staude Mak-A-Tractor Co.**  
2696 University Ave. St. Paul, Minn.



canizes the cover. The cover on the new Chemo-weld Penfold is only 3/64 in. thick. The ball was successfully tested by considerable actual play in the United States during the latter part of the 1934 season.

### BUCKNER SPRINKLER HAS NEW SAND ELIMINATOR

Fresno, Calif.—Sprinkler equipment using raw surface or sandy well water is short lived. This result is overcome by Buckner Mfg. Co.'s sand proof sprinkler line now offered the golf trade in six sizes, ranging from the Sub. Jr. to the Supers. This sprinkler, which the maker says does not wear out, is new to golf but is old to commercial users. Buckner has outstanding thousands of these Rainers which have been used to the extent of 8,000 hours and are still going strong. The feature of this equipment is a patented reservoir containing graphite grease which separates the stream of water from the bearing surface. No dirt can touch the bearing.

Buckner points out that it originated the adjustable flow valves back in 1928 and now has a coupler adjuster which is outside of the valve and outside of the coupler, and does not set up frictional loss. This adjuster quickly adjusts the flow through the valves "from a trickle to a deluge" and stops where it is set.

The company has a new and larger Super sprinkler designed for service of 100 GPM or more, giving a diameter of over 225'. The former Buckner "Super Six" now becomes the Buckner Intermediate and both

## DIAMOND

Steel Center  
Tractor Spud

Always Sharp  
Extra hard steel core keeps spud sharp until completely worn away. Softer outside steel wears first, leaving harder center. Will not harm turf.  
**DIAMOND CALK HORSESHOE CO.**  
4702 Grand Ave., Duluth, Minn.

Write for Details.

of these sprinklers are equipped with double, sand-proof bearings. A complete line of hazard-proof safety valves for athletic and polo fields, as well as heavily protected rubber covered pop-ups, rotary type, for use in all "pleasure turf" and a line of lower priced quick coupling valves for protected areas are also offered. They also feature a traveling sprinkler which is claimed to cover greater area than any other sprinkler of this type.

Buckner is featuring this year lower cost fairway construction. Fairway systems having permanent pipe can now be installed for \$10,000 to \$12,000. The Buckner record to date for a complete job, hoseless tees, greens and fairways for an 18 hole course is \$9,500, using cast iron pipe.

### GOLF'S GALLERY OF CHAMPS

Exclusive photographs of U. S. professional and amateur champions, handsomely finished and ready for framing so they'll be interesting features of the club lounge, grille room, locker-room or pro shop.

I have the largest collection of photographic portraits of golf's notables, including all but two of the American Open and amateur champions.

All prints are finished in royal sepia.  
5x8.....\$1      11x14.....\$5  
8x10.....3      16x20.....10

Special prices on complete sets of the champions or on other quantity orders.

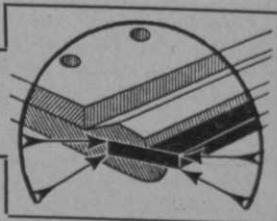
**GEORGE PIETZCKER**  
5464 Clemens Ave. ST. LOUIS, MO.

## Throw away your sharp pencils—

and get the BUDD! Budd's 4 edges will do the saving. Cuts time—cuts labor—cuts frequent sharpening expenses—cuts costly layups. 4 edges for 4 savings! Try Budd on one unit—then equip ALL your mowers. Write today.

BUDD MFG. CO., Dept. G, Ravenna, Ohio

## BUDD • BED • BLADES



The advertisers pay for your GOLFDOM; deal with them



## Classified Ads

10 cents a word per issue. Minimum charge \$2.50

**Locker Man**—Experienced, desires position, any location. Have excellent references best New York and Florida Clubs. Fine personality and appearance, 35 years old, English, single. Address: S. Stephenson, % *Golfdom, Chicago*.

**Club Steward**—Desires connection large club. 45 years of age. Employed twenty-five years in kitchen, twelve in clubs. Best reference. Address: Ad 9003, % *Golfdom, Chicago, Ill.*

**Position Wanted**—Chef—City or country club. Refined, courteous, teetotaler. Good references. Address: Ad 9002, % *Golfdom, Chicago, Ill.*

**Pros**—Wanted to sell Grip-Rite removable Shu-Spikes to their members and all golfers for improved stance. Prevent slipping. A profit to you and a service to the golfer. The North & Pfeiffer Manufacturing Co., Hartford, Conn.

**Greenkeeper**—desires connection with club. Seven years experience in construction. Have taken 11 weeks course in greenkeeping. Single; age 37. Will consider any location. Address Ad 9004, % *Golfdom, Chicago, Ill.*

**Pro-Greenkeeper**—20 years' experience, desires position. Fine player; high-class teacher. Thorough knowledge of golf course maintenance or construction. Expert on tournament conducting and grass fungi. Go anywhere. A-1 references furnished. Address: Ad 9000, c/o *Golfdom, Chicago, Ill.*

**Manager**—Club steward, 35, married, experienced, thoroughly competent to assume full charge of responsibilities. Excellent references. Will go anywhere. Prefer year round proposition. Address: Ad 9001, % *Golfdom, Chicago*.

**Golf Ball Salesmen Wanted**—by manufacturer of nationally advertised product selling exclusively to Pros. Must have own car. Liberal commission with opportunity to make permanent connection for exclusive territories. Write full particulars, stating number of Pros and territory covered; how often; previous experience if any; references, etc. Address: Ad 9006, % *Golfdom, Chicago*.

**Experienced daily fee course manager, builder, instructor.** Good business builder. Prefer daily fee course. Take assistantship at fair-sized club. Go anywhere. References. Available now. Address: Ad 9007, % *Golfdom, Chicago*.

**Pro-Greenkeeper**—open for position. 25 years experience. Handle any size job. Specializes in coaching and construction; finest references. Address: Ad 9008, % *Golfdom, Chicago*.

Substantial and experienced golf ball manufacturer wants to secure services of responsible salesmen or manufacturers' representatives calling on all classes of sporting goods trade. Not interested in anyone intending to carry competitive lines of balls. The territory available is in central states, near northwest, southwest and south. Full line of excellent balls on favorable strictly commission basis. Address: Ad 9011, % *Golfdom, Chicago*.

**GOLFDOM** has been privately informed of a desire on the part of an exceptionally capable greenkeeper to make a change. Only well established clubs need reply. This man has a foundation of technical training broadened by six years of the most exacting experience in preparing and maintaining golf courses for three national championships and his work has always been praised. Private interview desired. No hurry. Address: Ad 9012, % *Golfdom, Chicago*.

**Pro-Greenkeeper**—one of country's most successful course maintenance men and instructors, wants location where expert, alert, dependable operation is necessary. Highest endorsement in both pro and greenkeeping work. Responsible as construction supt. on some famous courses. Age 35. Married. Bad financial condition of present club accounts for his hunt for another job and for your club's chance to get this man at a moderate salary. Address: Ad 9010, % *Golfdom, Chicago*.

**Pro-Greenkeeper**—20 years experience in all phases of profession desires change. Expert instructor; thorough knowledge of soils, construction, etc. Can furnish best of references. Address: Ad 8007, % *Golfdom, Chicago, Ill.*

Professional with clean impressive record of accomplishment. Desires a medium size club where good service is rewarded by moderate income. Has served former club efficiently and satisfactorily for the past five years. Go anywhere. Your inquiry welcomed. Address: Ad 9017, % *Golfdom, Chicago*.

**Locker-room Steward**—with 20 years' experience at finest clubs wants club connection as locker-room steward, bar-tender or at small club as manager. Thoroughly competent and reliable. Age 40. Married. Address: Ad 8008, % *Golfdom, Chicago*.

**Scotch born Pro**—Desires position either as Professional or as an assistant. 15 years' experience; excellent teacher, player and clubmaker. Address: Ad 7012, % *Golfdom, Chicago*.

**Pro-Greenkeeper — Manager** — Wife excellent cateress—desire to make new contact. Both with finest references. Go anywhere. Possibilities of advancement more important than salary. Accept either position. Write: Ad 9014, % *Golfdom, Chicago*.

Golf course for lease, in northeastern Michigan, 9 holes. Bent greens. All equipment; semi-public. Clubhouse, locker room, living quarters. 3500 population. 10 other surrounding towns. No other course within 30 miles. \$500 down—balance monthly. Write: Ad 9015, % *Golfdom, Chicago*.

**Manager-Steward Open for Position**—25 years' experience, covering all departments, budgeting and accounting. Highest references. Address: Ad 9013, % *Golfdom, Chicago*.

**Young, well-known pro-greenkeeper** with successful and extensive experience and fine record is open for engagement. Experience covers first-class clubs on both sides of Atlantic. Excellent developer of golf students and recommended in this respect by many of the leading amateurs. Interested in either large club or small club where his efforts can increase club membership and activity and his own income. For complete details of experience and references write: Ad 9005, % *Golfdom, Chicago, Ill.*

**Caddie-master** with record of finest trained caddies in Cleveland district wants position with concession; prefers Ohio or western Pennsylvania. Thirteen years experience, married; at present employed. Address: Ad 8002, % *Golfdom, Chicago, Ill.*

**Chef** who is also competent to act as partial manager, supervising operations of kitchen, locker room, etc., wanted by Michigan country club with 250 members. Business amounted to only \$6,000 last year but competent man with agreeable personality can build this business up substantially. Prefer a married man. Living quarters on premises. Address: Ad 9016, % *Golfdom, Chicago*.

### TO GREEN-CHAIRMEN, GREENKEEPERS and GUARDIANS OF CLUB TREASURIES.

You can produce perfect turf of deep color, throughout the season with 'Terre' LAWN-SPUR and 'Terre' TOP-DRESSING. Prominent Golf Clubs in the metropolitan area (names on request) have proved the value of these products after exhaustive tests. LAWN-SPUR (8-6-5) is a special turf fertilizer developed after years of scientific plot tests. Its plant food is supplied from 12 sources, each becoming available at different periods. Thus, continuous feeding is provided with a minimum of loss from leaching. 'Terre' TOP-DRESSING is a scientific blend of organic matter produced especially for golf greens. It is perfect for spreading drier, finer, weed-free and more economical than home-made topsoil. In combination with Lawn-Spur, it has produced amazing results on courses and worth-while savings on club treasures. As soil, turf and fertilizer experts to many well-known golf clubs, we invite your inquiry.

MACMULLEN-TERHUNE COMPANY  
Fertilizer-Grass Seed Headquarters

Rochelle Park

New Jersey

MARCH, 1935

# The Golfdom

The Business Journal of Golf

VOLUME 9, No. 3

PUBLICATION OFFICES: 14 E. JACKSON BLVD., CHICAGO, ILL.  
Tel.: HARRISON 5942

Editor  
HERB GRAFFIS

Adv. Mgr.  
JOE GRAFFIS

Managing Ed.  
JACK FULTON, JR.

Eastern Rep., ALBRO GAYLOR  
20 Vesey St., New York City  
Tel.: COrtlandt 7-4031

Central Rep., RAWLINS & HUNT  
333 N. Michigan Ave., Chicago  
Tel.: RANdolph 6225

## EDITORIAL CONTENTS

300 Greensmen See 1935 Better, by Joe Graffis.....	19
Put Pep in Events, by Jack Fulton Jr.....	23
What Soil Tests Tell, by G. N. Ruhnke.....	27
Prevent, Don't Cure Brown-Patch, by J. Hunter Gooding.....	30
Cincy All Set for Managers.....	34
Lessons, Contracts Interest Pros, by Herb Graffis.....	36
Golf Marches On.....	42
Pro Ball Sales Lead.....	43
Golf Makers Push Play.....	48
Sports Dealers Air Woes.....	50
In the Rough, with Herb Graffis.....	54
Skeet Army Grows, by Col. Joe Linahan.....	62

## ADVERTISERS' INDEX

Allen & Son, B. G. ....	6	Limestone Products Corp. ....	74
American Fork & Hoe Co. ....	53	Livie Golf Co., Bill ....	15
Bacigalupi, E. J. ....	74	Lytton Building Corp. ....	14
Brozell Hotel ....	8	McClain Bros. ....	72
Brunswick-Balke-Collender Co., The.....	35	Milorganite .....	3rd Cover
Buckner Mfg. Co. ....	14	Moto-Mower Co. ....	16
Budd Mfg. Co., The.....	78	National Mower Co. ....	70
Canvas Products Corp. ....	68	Nelson Mfg. Co., L. R. ....	10
Chicago Flexible Shaft Co. ....	73	Page Fence Association .....	67
Crawford McGregor & Canby Co. ....	37, 39	Peckham, A. N. ....	77
Crossman & Clayton .....	68	Pennsylvania Lawn Mower Co. ....	7
Davis, Geo. A. ....	14	Perfection Sprinkler Co. ....	66
Des Moines Glove & Mfg. Co. ....	73	Phoenix Mfg. Co. ....	74
Detroit Harvester Co. ....	66	Pietzcker, George .....	78
Diamond Calk Horseshoe Co. ....	78	Premier Poultry Manure Co. ....	10
Dolge, C. B. ....	16	Professional Golfers Association.....	69
Dunlop Tire & Rubber Co.....	51	Root Manufacturing Co., The .....	72
Fate-Root-Heath Co., The.....	13	Roseman Tower Mower Co. ....	9
Florida Humus Co. ....	5	Royer Foundry & Machine Co. ....	71
Fort Shelby Hotel .....	4	Scott & Sons Co., The, O. M. ....	14
Fulname Co. ....	68	Sewerage Commission, The .....	3rd Cover
General Chemical Co. ....	6	Skinner Irrigation Co., The .....	8
Godwin, Hiram .....	74	Spalding & Bros., A. G. ....	44, 45
Graham & Co., John H. ....	67	Standard Mfg. Co. ....	8
Gravelly Motor Plow & Cultivator Co.....	77	Staudt Mak-A-Tractor Co., E. G. ....	78
Hawthorne Valley Golf Club.....	12	Stowe-Woodward, Inc. ....	47
Heddon's Sons, James .....	18	Stumpp & Walter .....	4
Hillerich & Bradsby .....	49	Tonagren Co., P. & M. ....	12
Horner, R. S. ....	77	Toro Mfg. Co. ....	60, 61
Hughes, Jr., Edwin J. ....	47	U. S. Rubber Co. ....	2nd & 4th Cover
Ideal Power Lawn Mower Co. ....	11	Vestal Co., John H. ....	74
International Harvester Co. ....	1	W-B Chemical Co., The .....	70
Jackman Sportswear Co. ....	59	Western Cartridge Co. ....	63
Jacobson Mfg. Co. ....	12	Wilson-Western Sporting Goods Co. ....	40, 41
Johnson, Inc., J. Oliver.....	2	Worthington Mower Co. ....	3
Kroydon Company, The.....	57	Young Golf Co., L. A. ....	55
Lewis Company, G. B. ....	16	Zwerg & Son, Robt. F. ....	72