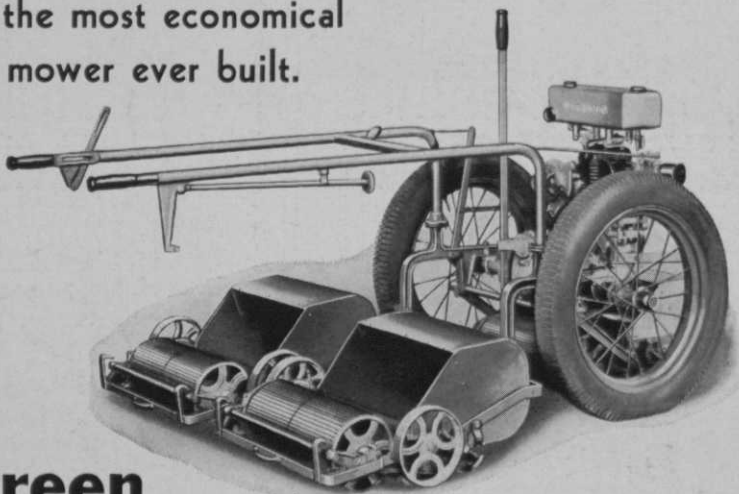


CUTS UP-KEEP!

Unquestionably...

this is the most economical
greens mower ever built.



The Scout Overgreen

Send for
catalog illustrating
and describing the
complete Worthington
line:

CONVERTIBLE MULTIGANG
7-unit fairway mower

The LAWN TRACTOR

The TRIPALAWN

SHAWNEE and SCOUT
hand mowers

ITS mowing smoothness—speed and ease of handling—
operating economy and its general utility plainly mark
it the outstanding greens mower of the present era.

Cuts 6,000 square feet in six minutes—Putting mowers
quickly replaced by units for tee, approach, etc. work—
Light weight, sturdy motor carriage saves time and labor
in rolling, spiking and fertilizing.

Only the "Scout Overgreen" gives so wide a range of
reliable performance. Here is "service value" that
means decided savings to your maintenance budget... a
1933 value that urges your full investigation.

May we send you complete details?

WORTHINGTON MOWER COMPANY
Pioneers and Leaders in Golf Mowing Equipment
STROUDSBURG, PENNA.

WORTHINGTON

NEW YORK
4215 Chrysler Building
CHICAGO
517 So. Laffin St.
SEATTLE
Ivan W. Lee
709 Fourth Ave.

PHILADELPHIA
25 W. Horter St.
(Mt. Airy)
ROCHESTER, N. Y.
Haverstick & Co.
UTICA, N. Y.
Roberts Hdwe. Co.

A
G
E
N
T
S

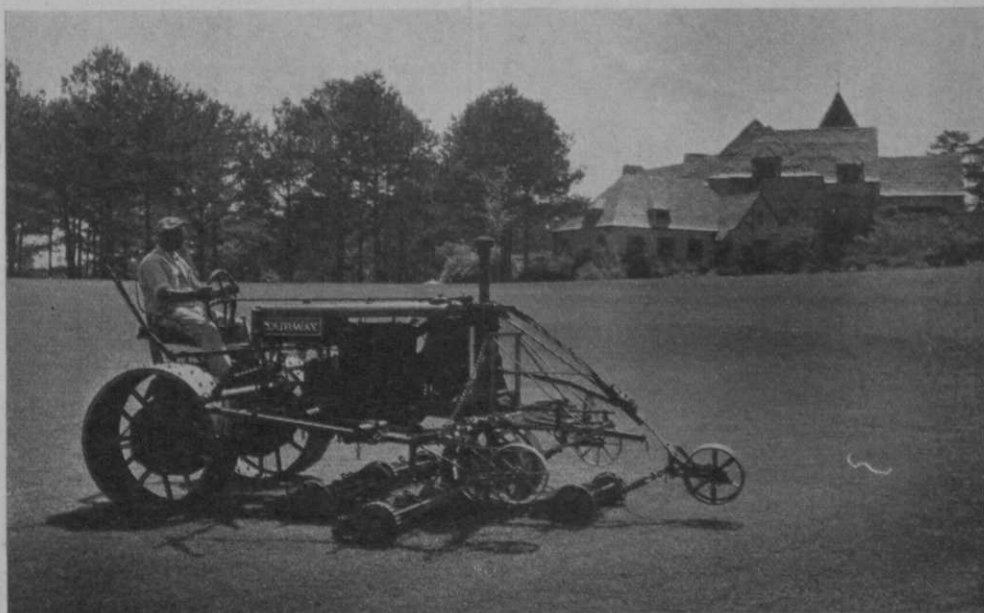
BOSTON
One State Street
CLEVELAND
Hippodrome Building
WASHINGTON, D. C.
6900 Wisconsin Ave.
(Bethesda)

JACKSONVILLE
S. E. Golf Course Supply
LOS ANGELES
2341 Washington St.
SAN FRANCISCO
H. V. Carter Co.
52 Beale St.

DENVER
Burnite Machinery Co.

NEW ORLEANS
Southern Specialty Sales Co.

Your Savings Begin When a FAIRWAY Goes to Work



The Capital City Country Club of Atlanta, Ga., depends on the McCormick-Deering Fairway Tractor to solve its maintenance problems.

THE vital consideration today is economy. It is out in front of all the factors that govern golf-course management. Every greenkeeper and every greens committee is looking for low-cost maintenance—and plenty of evidence shows that the McCormick-Deering Fairway Tractor is able to furnish it.

Trust your maintenance to the Fairway. Every year you own and operate a Fairway Tractor you will

be saving money through its remarkably efficient operation, as proved by years of successful performance.

You cannot fully realize the extra value in a Fairway Tractor and the economies it effects until you have put it to work. Ask the nearest McCormick-owned branch or a McCormick-Deering distributor or dealer for a demonstration on your own course. Write us for information.

INTERNATIONAL HARVESTER COMPANY
606 So. Michigan Ave. OF AMERICA Chicago, Illinois
(Incorporated)

**The Golf
Tractor**

**MCCORMICK-DEERING
FAIRWAY**



Watered Fairways

hold members and attract new ones.

To get new members—and to hold the ones you have today—*water your fairways!* The wisdom of this move has been proved dozens of times in the past few years.

To clubs planning this progressive step, Buckner equipment—and only Buckner equipment—offers these advantages:

Definitely superior performance—with maximum efficiency and economy.

Positive slow speed control—with even distribution of water.

Satisfactory service over a long period of years—no gears, no delicate parts.

Greater areas covered—minimum of outlets necessary.

Sprinklers for every condition of golf course water supply and pressure.

Highest endorsement from users.

Write for full information. No obligation

BUCKNER MANUFACTURING CO.,
Fresno, Calif.

Factory Representatives:

P. L. Baldock, 2240 Casitas Street, Pasadena
Buckner Irrigation Co., 4970 Milwaukee Ave.,
Chicago, and Bayside, Long Island, N. Y.

Eastern Engineering Representative:

Wendell P. Miller and Associates, Bayside,
Long Island, N. Y.

BUCKNER

PREVENT BROWN PATCH USE "FORE-PEST"

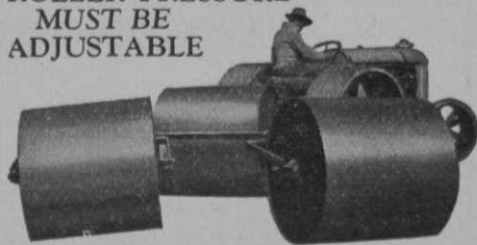


Prevention, not cure, is the solution of Brown Patch. Fore-Pest is a permanent protection against the ravages of Brown Patch, and other Fungi and insects on putting greens. Only three applications necessary. Saves time, labor and worry. Successfully used on many golf courses last year. Fore-Pest is an Insecticide as well as a Fungicide. Write for particulars.

CAMILLO LABORATORIES

618 Architects Bldg. Indianapolis, Ind.

ROLLER PRESSURE MUST BE ADJUSTABLE



one reason why green keepers prefer

DUNHAM
WATER-WEIGHT
Trade Mark
FAIRWAY ROLLER

BY increasing or decreasing the amount of water in the drums of this Fairway Roller the weight is easily regulated from 1,300 to 5,000 pounds. This permits light or heavy rolling, according to the nature of the turf. The Dunham's three great sections operate independently to conform to the contour of the ground and flatten the uneven surfaces. Total rolling width, 8 feet 3 inches. Strongly made, easily operated. Inexpensive.

*For Details and Prices Write to
Your Golf Equipment Dealer or*

DUNHAM WATER WEIGHT LAWN ROLLER COMPANY
113G Chambers Street, New York, N. Y.
Canadian Office: 262 Second Avenue, Montreal

FERTILIZER ECONOMY

In these days of necessary economy, it will be false economy to neglect the turf on your golf course. Good playing conditions mean satisfied golfers, and underfed grass cannot make good turf. Plant food is an essential part even of your depression budget.

The cheapest fertilizer may be the most expensive. A concentrated high analysis product will undoubtedly cost more per ton but the **COST PER POUND OF PLANT FOOD IS LESS.**

There also is economy in application. Concentrated fertilizers go farther and do not require as much labor in handling.

... ARMOUR'S SPECIAL TURF FERTILIZER



is a high analysis plant food. Conveniently packed in 100-lb. sift-proof bags, it is easy to handle and easy to apply. It is odorless—therefore not objectionable either on the course or around the storehouse.

In one twenty-ton car of Armour's Special Turf Fertilizer, there is enough plant food to fertilize the fairways, greens and tees of an 18-hole golf course.

*Be sure to make this provision
in your budget this spring.*

ARMOUR FERTILIZER WORKS
CHICAGO HEIGHTS, ILL.

GOLF SUPPLY HOUSES — Write Us — Your Territory May Be Open

PUT YOUR COURSE BACK IN SHAPE ...*ECONOMICALLY!*

GRASS SEED

Quality high—prices low
Kentucky Blue Grass
Recleaned Red Top
Chewings Fescue
Poa Trivialis
Seaside Bent

EQUIPMENT

Selected from experience
for efficiency

Tractors
Mowers
Seeders
Discers
Cutters
Flags
Poles
Cups, etc.

FERTILIZERS

Bag lots, ton lots, car lots
Swift's Special Golf
Milorganite
Ammonium Sulphate
Nitrate of Soda
Superphosphate

INSECTICIDES

Eradicators for any pest
Semesan
Nu-green
Arsenate of Lead
Calo-Clor
Calogreen
Calomel
Corrosive Sublimate
Red Arrow Sprays
Diworma

This year no club that expects to hold its members can afford to let things slide. J. Oliver Johnson, Inc., can help you solve any problem connected with the care of your golf course. Order now from the largest stock of golf course supplies and equipment—we have everything you need!

J. OLIVER JOHNSON INC.

World's Largest Golf Course Equipment House
956 W. Huron Street, Chicago
Phone Monroe 6580

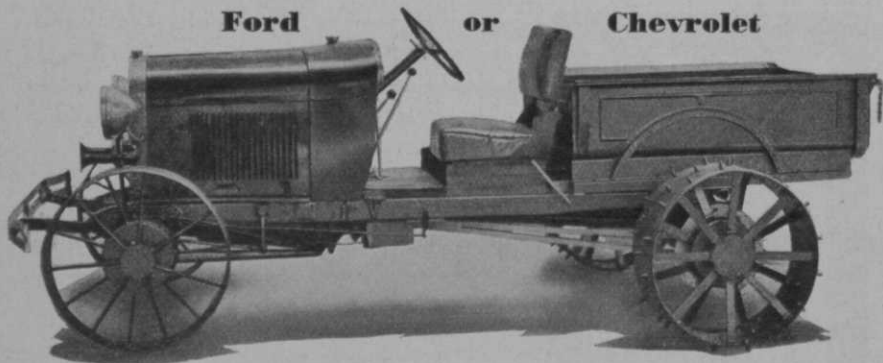
Send for the

J. OLIVER JOHNSON CATALOGUE
the guide to economical purchases

The **BLACK HAWK** ^{Super Power} Golf Tractor

(Backed by 23 years of tractor building experience)

Ford or **Chevrolet**



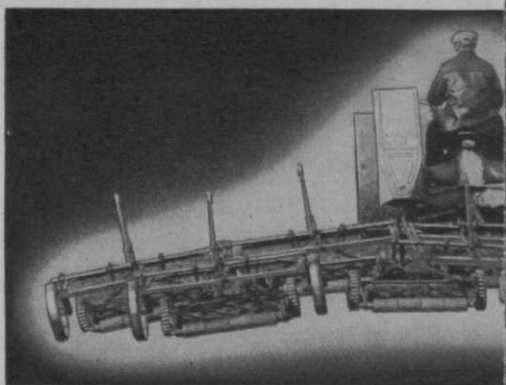
POWERFUL — SMOOTH — ECONOMICAL OPERATION

Internal Hardened Alloy steel gears mounted on Hyatt and Timken bearings running in bath of oil makes the BLACK HAWK tractor the outstanding tractor of today regardless of price. Sold by leading distributors everywhere—fully guaranteed—Write for complete information. (Metal wheels or pneumatic rubber tires supplied).

ARPS CORPORATION, New Holstein, Wis.

MARCH, 1933

HERE'S THE LATEST DEVELOPMENT



IDEAL TRANS-PULL

LIGHTER! LOWER COSTS! A

The Trans-Pull is the most *adaptable* mower ever born. Unit assembly allows 3, 5, 7 or NINE cutting units—convertible at will, right on the job.

NINE cuts 20½ ft. weighs only 2,732 lbs. For steep hills or narrow cutting, converts to seven, or five. 7-gang cuts 16 ft.—5 cuts 11½ ft.—3 cuts 7 ft.

Each close-coupled, 7-blade Bulldog unit is cleverly hinged to reach into every little hollow—to ride ridges without scalping.

Does a championship brand of cutting. Equally good on all types of turf—blue

IDEAL POWER GREENS MOWER.



Safe, smooth cutting. Proved in 2 years, including the finest. Turns around without. Patented clutch cycle engine. Th governor. Has pe bent or Bermuda g. Ideal direct-power over sharp raises. Blades back-ground cart. Brush attach

IDEAL POWER LAWN

446 KALAMAZOO ST.

237 Lafayette St., New York, N. Y.

DEALERS AND SERVICE STATIONS

if you are still
making compost
without a **ROYER**

*...it is costing
you too much*

- in time
- in labor
- in material

and likely players too!

ROYER

COMPOST MIXERS

WRITE FOR ILLUSTRATED BOOKLET
Sold Thru Leading Golf Equipment Dealers

Royer Foundry & Machine Co.

158 Pringle St.

(Kingston Station) Wilkes-Barre, Pa.



STOP BROWN PATCH —DESTROY CLOVER WITH TONAGREN

Science has brought forth another wonder to help the Greenskeeper maintain his greens in perfect condition. It is no longer necessary to worry about **brown patch and clover**—TONAGREN, in a single stroke makes these two evils a thing of the past. It is a double acting, effective preparation that sells for less money than most preparations that can be used for one purpose alone.

Write today for full particulars
and prices.

P. & M. TONAGREN COMPANY

6324 BROOKLYN

KANSAS CITY, MO.

TORO Reliability Assures Lower Maintenance Costs



TORO MASTER MODEL A TRACTOR

Here is a tractor without competition in the light tractor field. Like the Model B, it is not simply a pleasure car chassis called a tractor, but is built for a special job, namely golf course maintenance, and has ample power for any legitimate load. It handles with ease seven mowers up any grade where golf course turf can be grown. The 15" rear wheels afford ample traction under any conditions. In short, the Master Model A tractor is the tractor for the club that

wants a real machine for the job. Like all Toro equipment, the Model A tractor is built with a wide margin of safety.

MASTER MODEL B TRACTOR

A real outfit built from the ground up to handle its job well. The Toro is a golf course tractor all the way through, with heavy chassis, special radiator; a brute of a rear end that can almost pull stumps without tearing it up; 15" tires on the rear wheels; all steel dump body holding one cubic yard; starter. It is in every way a thoroughly dependable, handy all around tractor.

This machine is furnished regularly with steel tires front and rear. May be had with pneumatic tires in front and steel in rear; or pneumatic all the way round, or steel in front and Barth in the rear, or pneumatic in the front and Barth in the rear. Rubber tires extra. When it is equipped with pneumatic tires in the front and Barth in the rear it makes an excellent truck as well as tractor.

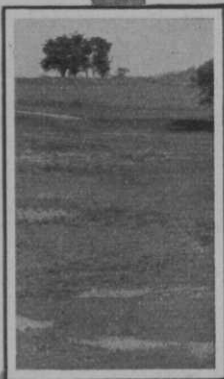


Your 1933 Toro catalog is waiting—write for it!

TORO MANUFACTURING CO.

3042-3168 Snelling Ave., Minneapolis, Minn.

Service Stations in Leading Centers



Which Course Will Get the Play?

YOU know the answer—the *best kept* one. 1933 will be plenty tough for the club with ragged greens and patchy fairways.

This is a year of keen competition among golf courses and *good turf* will be the strongest argument in your sales kit. Velvety fairways and smooth greens can now be built and maintained cheaper than ever before.

Scott's Seeds are free from weeds and chaff. They provide the sure, economical way to good, thick, healthy turf. We sell direct to the club on a small profit margin. Make your maintenance dollar go farther. Specify Scott's Seeds and Scott's Turf Builder.

"The Putting Green," a book for greenkeepers and greens chairmen, is supplied for the asking.



SPIKE DISC

LAWN & GREEN
CULTIVATORS
(Patented)

For Greens,
One Handle
Model
(Illus.)
\$27.50

With two
Handles
\$30.00

Tractor
Models for
Fairways
\$120.00

"Use Regu-
larly," Say
Authorities

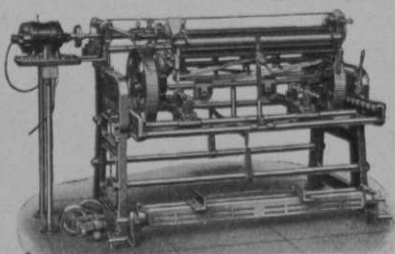
A NECESSITY FOR TURF AERATION

SPIKE DISCS aerate the turf and produce a moisture-retaining mulch—essential for the maintenance of fairways and greens. They discourage "brown patch" by preventing ground from becoming hard baked. Unequaled for re-seeding—and top-dressing. Seed and fertilizer settle in disc-made perforations and are not blown or washed away. Inexpensive, durable, easy to operate.

Details and Prices from your Golf Equipment Dealer or

JOHN H. GRAHAM & Co., Inc., Sales Agents
113 G Chambers St., New York
268 Market St., San Francisco
565 W. Washington St., Chicago
Manufactured by Wilder-Strong Co.,
Monroe, Michigan

The New PEERLESS, JR. Mower Sharpener



A high-grade Mower Sharpener of ample size and capacity at a very low price. Grinds all makes of power mowers and tractor units with blades up to 36 inches wide, as well as putting green and hand lawnmowers, without removing wheels or reel knives. Grinds reel knives with proper clearance or bevel and to fit straight blade even if latter is bent or sprung. New automatic weight feed—very fast and accurate. Equipped with Reconditioner for "lapping in" with emery paste; Attachment Bar for grinding badly worn straight blades, and Special Grinding Wheel for grass and hedge shears, sickles, scythes, etc. Direct-drive 1/3 H. P. Westinghouse motor or with tight and loose pulleys for belt drive. Write for descriptive folder and price.

THE FATE-ROOT-HEATH COMPANY
233-269 Bell St. Plymouth, Ohio

The F. & N.

UNBREAKABLE

"Quintet"

Fairway Equipment



UNBREAKABLE!

FOR smoothest cutting—fastest, easy running—trouble free, most useful and longest service, the famous F. & N. UNBREAKABLE "QUINTET" Fairway Equipment stands alone.

F. & N. UNBREAKABLE TITAN Fairway Mowers used exclusively in this equipment are designed and built especially for this rugged service.

TITANS are the only mowers built that use the patented "Interlocking" frame and cutter bar construction which is so necessary to keep the mower in rigid and perfect alignment.

Gears have CUT teeth made from drop-forged STEEL, heat treated, and revolving on Timken Roller Bearings in a constant bath of oil.

SIX revolving blades of special analysis Chrome Vanadium steel individually hardened and tempered in oil.

TITAN Mowers are equipped with demountable revolving reels—easily dissembled and assembled for sharpening or replacing the cutting units.

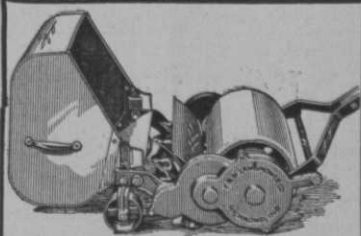
TITAN Mowers—Every part is machined to mathematical accuracy—precision fitted throughout.

TITAN Mowers are guaranteed positively UNBREAKABLE.

Best of all the TITANS are equipped with the Genuine Patented self-adjusting device which automatically takes up all wear in the bearings—another exclusive feature.

The new F. & N. ALL-STEEL frame is stronger, lighter, more flexible and more convenient. It handles TITAN Mowers in gangs of THREE or FIVE and FITS ANY TRACTOR.

Satisfaction fully guaranteed. Get full particulars and our special prices before you purchase equipment for 1933.



The F. & N. Putting Green Mower

On smoothest and most velvety greens everywhere you will find F. & N. Putting Green Mowers. Greenkeepers say it is the finest mower they have ever used. Self-Adjusting reel bearings with eight revolving blades—Alemite oiling, etc. Rubber-tired carriage for transporting. Write for particulars and special prices.



They're
Self-
Adjusting!

Smooth operation is permanently assured with F. & N. Unbreakable All-Steel TITAN Fairway Mowers and with F. & N. Putting Green Mowers—every one is equipped with the genuine, patented F. & N. Self-Adjusting Device in the revolving reel. No difficult hand adjusting or poor mowing with these.

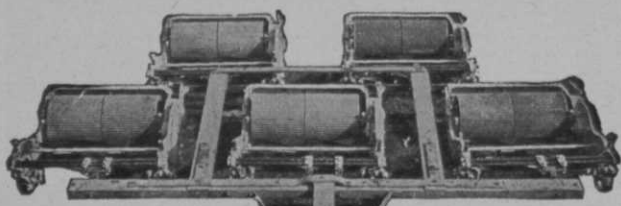
THE

F. & N. LAWN MOWER CO.

Richmond, Indiana, U. S. A.

THE WORLD'S LARGEST LAWN MOWER MANUFACTURERS

Roseman Standard 5-Gang Mower Reduced \$155!



NOT a single Roseman Feature eliminated! In fact, quality has been improved! Here is an opportunity for your Club to obtain genuine Roseman Mowers at low cost.

For years Roseman has manufactured high quality mowers. They are famous for sturdy design and their exclusive roller drive and turf-build-

ing features. Although Roseman prices are usually higher than other mowers, they outlast by years all other mowers. The result is always a saving to the user in total mowing costs over a few years' time.

The new low prices were effective beginning February 1.

Write today for complete details.

FEATURES OF ROSEMAN DESIGN

Alemite Forced Feed Lubricators.

Timken Tapered Roller Bearings on Cutter.

Hyatt British Tank Roller Bearings on Rear Axle.

GUARANTEED Non-Breakable Malleable Side Frames.

Gear Cover, Bed Knife Shoes, and Caster Wheel Forks.

Drop Forged Machine Cut Gears.

LIGHT ROLLER DRIVE, for better Traction and Turf Development.

Eliminates separate Rolling, and Produces Dense Turf Growth, Healthier Root Development, Prevents Scalping, Eliminates Cuppy Lies, Seals Heat Crevices, Retains Moisture in Soil.

(Our patents give us the exclusive right to all ganging of Roller Type Mowers)

ROSEMAN TRACTOR MOWER CO.

800 Davis St.,
Evanston, Ill.

11 W. 42nd St.,
New York, N. Y.

Approximately 98%

of all Putting Greens are cut by Roller Type Mowers, because they improve turf growth and Putting surface. They also eliminate separate rolling. The invention of Roseman Mowers gives your *fairways* the same turf-building benefits at no extra cost.

ROSEMAN MOWERS