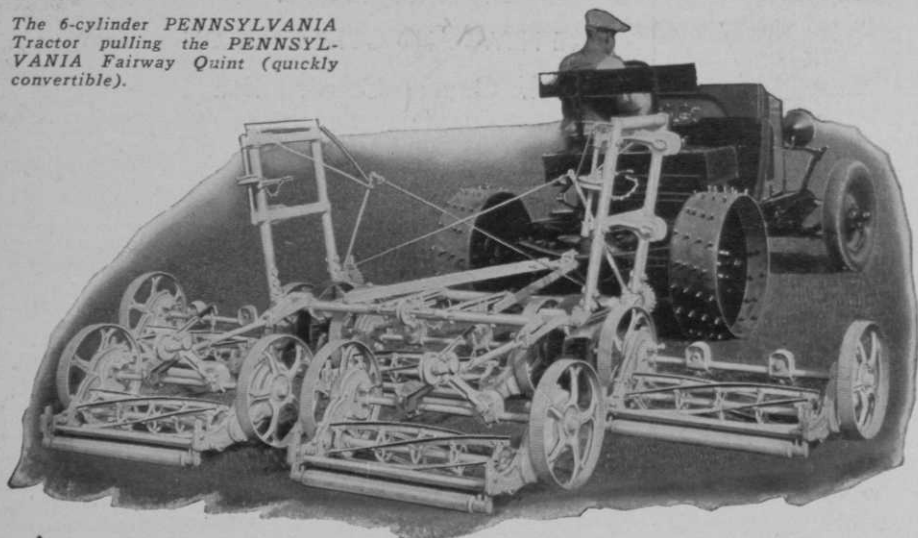


The 6-cylinder PENNSYLVANIA Tractor pulling the PENNSYLVANIA Fairway Quint (quickly convertible).



A new, fast, powerful PENNSYLVANIA Tractor with worm drive

The 1932 model PENNSYLVANIA Tractor embodies improvements which put it almost in a class by itself. Silent, powerful and with a maximum speed of 24 miles an hour, it has worm drive on rear axle. The 60 horsepower engine delivers over 700 horsepower at rear wheels at full speed.

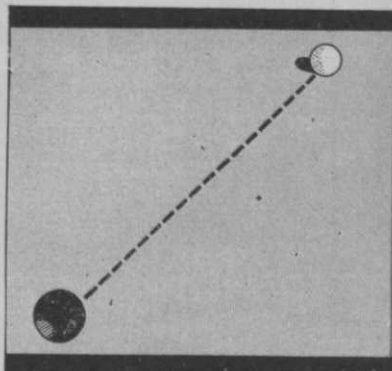
With first and second gears for heavy work and high gear for light work, this tractor is for all-around service. It comes with or without steel dump body of one cubic yard capacity.

Removable steel wheels, 12 inches wide, with steel studs, on rear. Pneumatic tires in front. We recommend extra pneumatic tires for rear when using tractor for light hauling, on the course or on the road.

The PENNSYLVANIA Tractor with PENNSYLVANIA Unbreakable Units in gangs of 3, 5, 7 or 9, is unexcelled for mowing fairways and rough.

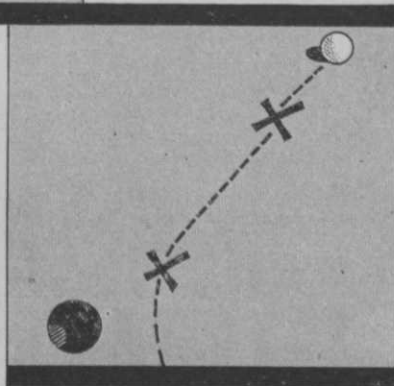
Write for complete catalog featuring greens, tee and fairway mowers.

PENNSYLVANIA LAWN MOWER WORKS
Primos, Delaware County, Pa.



No Course
Is Better
Than Its
Greens ▲ ▲ ▲

Control
Grubs, Beetles
Earth-Worms



with DOW LEAD ARSENATE

MANY greenskeepers solve the grub, beetle and earth-worm problem with Dow Lead Arsenate.

"We have used Dow Lead Arsenate for control of grubs and worms and have been more than satisfied with the results", writes one.

Another says, "Relative to the use of Arsenate of Lead on the golf course, I have had exceptionally good success in controlling the so-called Web-Worm."

Another, "We have been using it for two

years and have just about eliminated the worm casts from our greens."

Dow Lead Arsenate has repeatedly proved its remarkable effectiveness. It is a light, finely-divided, fluffy grade that is especially adapted for grub, beetle and earthworm control. It also discourages the growth of chickweed, crab grass, fennel and other weeds.

Keep your greens and fairways in good condition all season. Use Dow Lead Arsenate.

Write for information.



THE DOW CHEMICAL COMPANY
Midland, Michigan



SPRING SHOWERS

Are forgotten when the hot, dry days of August parch unwatered fairways. But you can have the same velvety April-green course the season through, regardless of drought conditions, when the

BUCKNER

One-Man Sprinkler System

Irrigates your fairways. And, too, you'll have the satisfaction of knowing your course is being properly irrigated at a tremendous money saving compared with man-power costs where ordinary equipment is used.

There are more Buckner sprinklers and valves in use on American golf courses than any other make.

May we, without obligating you, send a copy of our latest catalog?

BUCKNER

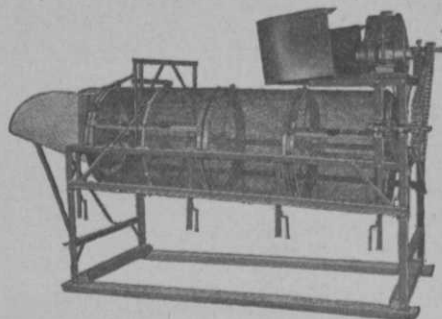
MFG. COMPANY

Fresno, Calif.

FACTORY REPRESENTATIVES

P. L. Baldock, 2240 Casitas St., Pasadena
Buckner Irrigation Co., Bayside, Long Island, N. Y.
Buckner Irrigation Co., 4970 Milwaukee, Av., Chicago
EASTERN ENGINEERING REPRESENTATIVES
Wendell P. Miller & Associates, 4970 Milwaukee Av.,
Chicago

COMPOST-^{CONVERSE} Rotary Screens-SOIL



"Converse Screens make par greens"

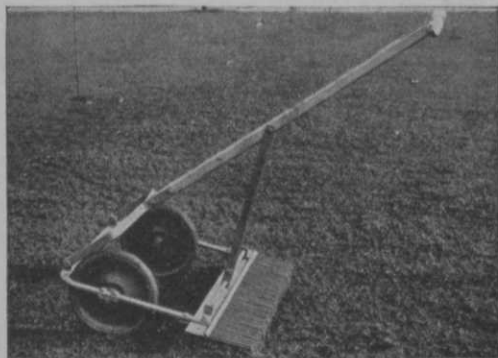
FOR PREPARING SOIL OR SCREENING COMPOST—ONE TO FOUR GRADES AT ONE OPERATION.

DRIVEN BY HAND, TRACTOR OR ENGINE (illustrated).

—BULLETIN ON REQUEST—
ORDER FROM MAKER OR YOUR JOBBER

Manufactured by

F. S. CONVERSE CO., Inc.
BOX B JOHNSON CITY, N. Y.



The TORO

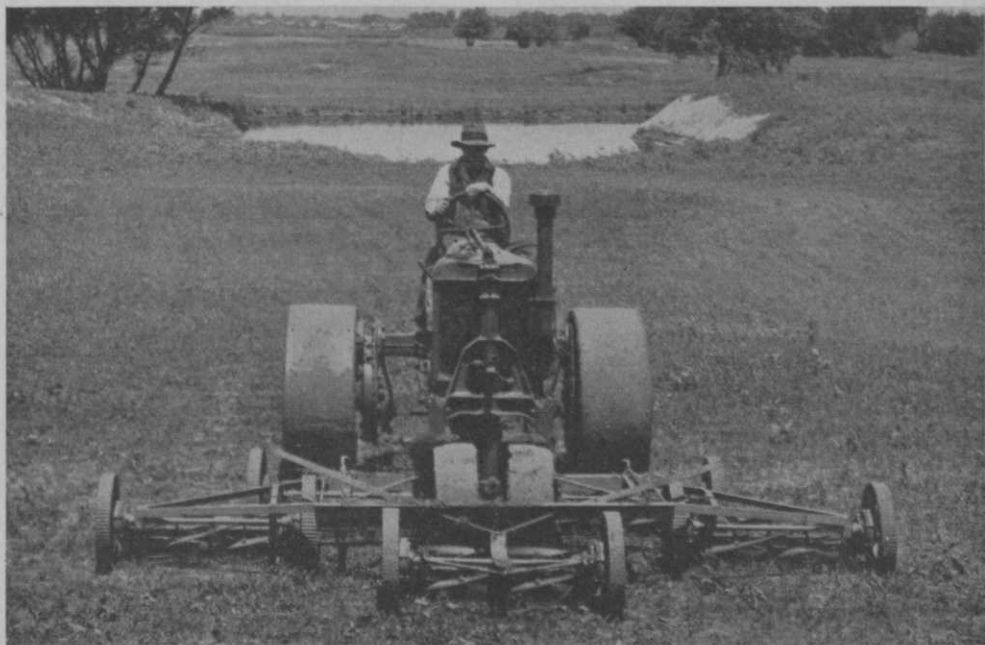
Del Monte Greens Rake

To maintain a true putting surface, use the Del Monte Rake regularly for removing the grain from creeping bent or Bermuda grass putting greens and for raking up matted grass for proper cutting. Write for full information.

Toro Manufacturing Co.

3042-3168 Snelling Ave. Minneapolis, Minn.

Let the FAIRWAY Trim Your Budget As Well as Your Course



Put the McCormick-Deering Fairway to work on your course and watch it cut maintenance costs. It often pays for itself in one season and it eliminates maintenance worries as soon as it gets on the job.

YOU can make important savings in maintenance this year and for many years to come with the McCormick-Deering FAIRWAY Tractor. This efficient power plant pays for itself by reducing labor costs to a minimum. Only one man is needed to operate the FAIRWAY when mowing the fairway and cutting the rough. With a gang mower he can cut from 75 to 100 acres a day, and with the 7-foot built-in power mower the rough is cut quickly and easily. The compactness of this tractor permits cutting close to, and in between, trees and other obstacles.

The FAIRWAY does a great amount of

work at low cost. Every part is designed and built to give years of service. It is economical on fuel. Ball and roller bearings at many points reduce friction and wear. There is plenty of power for any job, including construction work. The power is also available for belt jobs.

If you really want to reduce your budget the FAIRWAY is the mechanical unit that will do it for you. Ask the nearest of 115 Company-owned branches in the United States and Canada, or a McCormick-Deering distributor or dealer, for a demonstration. Write us for catalog.

INTERNATIONAL HARVESTER COMPANY
606 So. Michigan Ave. OF AMERICA Chicago, Illinois
(Incorporated)

**The Golf
Tractor**

**MCCORMICK-DEERING
FAIRWAY**

MAY
1932

Golfdom

Vol. 6
No. 5

Editor
HERB GRAFFIS

Eastern Representative
ALBRO GAYLOR
20 Vesey St., N. Y. City
Tel. Cortlandt 7-4031

Published 1st of each month

205 W. Wacker Drive
Chicago, Ill.

Tel. STate 3160-1

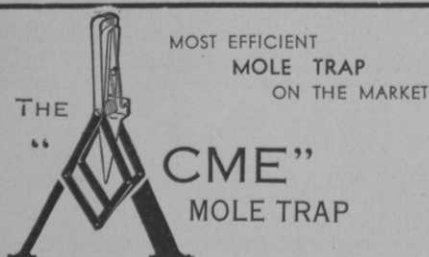
Advertising Manager
JOE GRAFFIS

Western Representative
DWIGHT H. EARLY
100 N. LaSalle St., Chicago
Tel. CENTral 4158

Pacific Coast, HALLETT COLE, 211 New Orpheum Bldg. Tel. Tucker 6428,
Los Angeles, Cal.

EDITORIAL CONTENTS

Department Teamwork Right Route to Economy. By L. J. Feser.....	15
Skill in Small Spending Is Temple Idea.....	18
California's Bermuda Fairways in Command. By Arthur Langton.....	21
Dinner Wagons Permit Quick Small Staff Service. By H. E. Benjamin.....	25
How Portland (Me.) Built Municipal Course. By W. J. Dougherty.....	28
Clubhouse Design Important in Municipal Promotion. By Clifford Wendhack	30
"Lost and Found" Ball Dept. Beats Pro Competition. By Herb Graffis.....	36
Winter Tourney Success Promises Summer Circus. By Herb Graffis.....	42
Pro Job Must Headline Membership Campaign. By Jack Fulton, Jr.....	48
Caddie Boom Is Over.....	54
Pros' Market Shows Room for Sales.....	62
Make Members Forget Grief, Is 1932 Keynote. By Herb Graffis.....	66
Uniform Accounting Need Shown by Club Troubles.....	73
Minnesota Greens Short Course Papers Digested.....	78
Women Show Interest in Greenkeepers' Work. By Betty Burton.....	86



MOST EFFICIENT
MOLE TRAP
ON THE MARKET

THE
"ACME"
MOLE TRAP

SAFE :: SURE :: SMALL
EASILY SET :: RUSTPROOF

ENDORSED BY GREENKEEPERS, PARK
SUPERINTENDENTS, U. S. BIOLOGICAL
SURVEY OPERATIVES AND MANY OTHERS

NOW READY FOR DELIVERY BY YOUR DEALER
AT \$2.00 EACH. DISCOUNTS ON LOTS.

SPECIAL OFFER

To introduce the ACME to readers of GOLFDOM, one trap will be sent postpaid to any GOLF CLUB in the U. S. upon receipt of \$1.00.

If for any reason trap is returned within 90 days from delivery, money will be refunded.

C. E. GRELLE
Green Hills
PORTLAND, OREGON

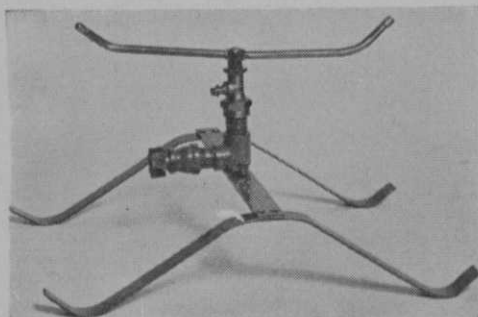


IF YOUR DEALER CANNOT SUPPLY YOU ORDER DIRECT

THE TURF BUILDER

A Penetrating Rain Instead of a Downpour
"Lasts a Lifetime"

SPECIAL GOLF CLUB OFFER Price \$4.75 DELIVERED IN U. S.



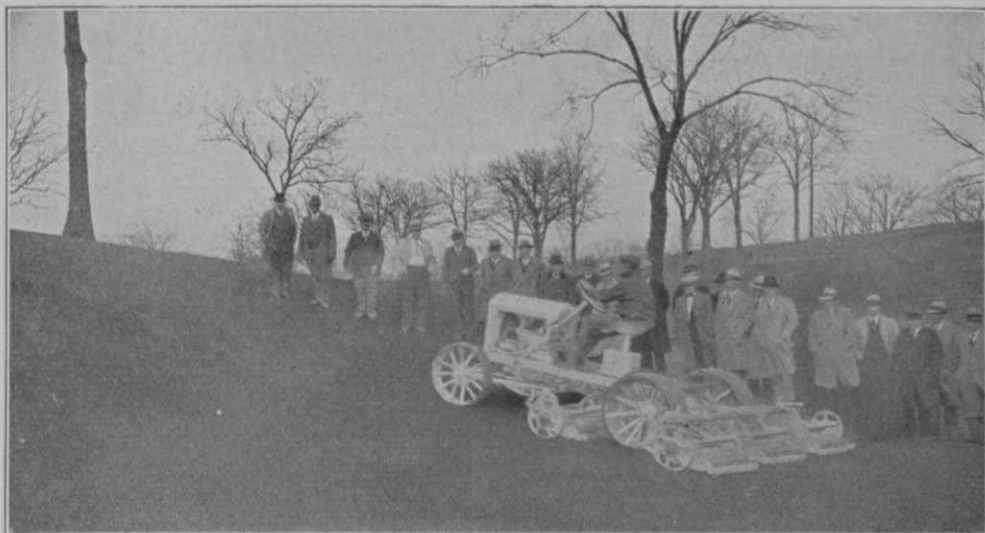
ON 3 TO 20 LBS. PRESSURE

COVERS CIRCLE 6 TO 70 FEET IN DIAMETER

NO GEARS. NO FLOODING. SLOW MOTION. EVEN DISTRIBUTION. CAN BE USED ON TEES, GREENS, FAIRWAYS OR AROUND THE CLUBHOUSE.

ADOPTED AS STANDARD BY MUNICIPALITIES, CEMETERIES, PARKS, SCHOOL GROUNDS, ESTATES. IDEAL FOR RESIDENCE USE OR NURSERIES.

NATIONAL DISTRIBUTOR
DAN F. RYAN
3301 Berkeley Rd., Cleveland Hts., Ohio



“The most amazing performance I have ever seen”

*Says Jack Welsh,
Pro-Supt. Wakonda Club, Des Moines*

THE Wakonda Club, Des Moines, Iowa, ranks as one of the hilliest golf courses in this country. Very few tractors are able to negotiate its stiff grades without slippage of the wheels and damage to the turf.

On Monday, April 11th, thirty-eight Professionals and Superintendents gathered to watch the performance of the New Toro Master Five Tractor.

The turf was slightly soft from a heavy frost the night before. It was indeed problematical that any tractor could negotiate the steep grades.

The photograph tells the story and shows the Toro Master Five climbing a grade estimated by those present at 30% in high gear from a standing start with five 30-inch mowers. No wonder Jack Welsh, the well known Pro-Superintendent, remarked:

“The most amazing performance I have ever seen. A wonderful demonstration.”

You are making a big mistake if you buy an old fashioned pull type mowing outfit without first seeing the Toro Master perform. Write today for information.

Toro Manufacturing Company

3042-3168 Snelling Avenue
Minneapolis, Minn.

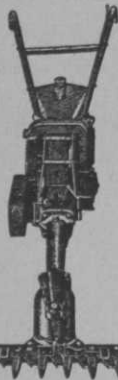
Sales-Service Stations in leading distribution centers.

Appearances Are Highly Important

The appearance of your course is the best salesman you've got.

With the GRAVELLY MOWER you cut everything. No tall weeds left standing to give that ragged effect.

With the Swivel Action Cutter Bar in front of the Single Wheel



Machine, you can mow the steepest hillsides or go into any corner. Quickly changed into a Rotary Mower pleasingly different from anything on the market.

Reduces mowing costs. Improve appearance of course. Mail coupon today for the proof.

MAIL COUPON NOW!

Gravelly Motor Plow & Cult. Co.,
Box 513, Dunbar, W. Va.

Please send me Free Mower Booklet.

Name

Address

SEE THE 36-INCH MASTERS Perfect Distributor

For the uniform distribution of fertilizer, top dressing, grass seed, etc.



EASY TO OPERATE
DOES PERFECT WORK

The 36-inch size is a splendid machine for your greens—Efficient and Economical.

Has simple regulating device for spreading any desired amount. Positive shut-off controlled from the handle. Rotary agitator. Non-corrosive hopper bottom and working parts.

3 16"—illustrated above.
24"—with double disc wheels, 2 3/4" tread
36"—with double disc wheels, 2 3/4" tread

MASTERS PLANTER COMPANY
4918 W. Grand Ave. Chicago, Illinois

Eastern Distributors

Synthetic Nitrogen Products Corp., 285 Madison Ave., New York

Fraser's 1932 (10th ANNUAL EDITION)

Ready now---Price \$2.50

A Complete Buying Guide—All Firms, world-wide, listed free. Only in Fraser's.

Trade Names—Everything for Golf. Only in Fraser's.

World-Wide Club Directory Section (9,000 Clubs)—
Fraser's only shows where Tourist Golfers are welcome.

Start the Season Right—Get
Fraser's Now.

FRASER'S INTERNATIONAL GOLF YEAR BOOK

23 East 26th Street - - - - - NEW YORK CITY
University Tower Building - - - - - MONTREAL



Out goes **BROWN PATCH** *in comes a new turf*

Barbak, used as a cure, not only stops the fungus growth immediately, but quickly brings back a normal stand of turf. And it's just as effective as a preventive. Use it early enough and it won't even give Brown Patch a chance to appear on your greens. Barbak saves not only your greens, it saves money, time and effort. It's odorless, mixes easily, doesn't cake in the can. You can apply it with your top dressing or water it in. In neither case will it burn the turf.

Don't take our word for it. Try Barbak on your greens and see for yourself. Most every reputable supply house carries Barbak. Write us for the name of your nearest distributor.



AMERICAN CYANAMID SALES CO., INC.
 535 FIFTH AVENUE NEW YORK CITY

211
Barbak
XX

TWO ELEVEN
DOUBLE XX

FOR USE WHERE SOIL
USE WITH A BALANCED

FERTILITY IS LOW
FERTILIZER PROGRAM

TURF DISINFECTANT



**PAGE
FENCE**
IN 4 METALS

**YOU
SELECT THE STYLE**

**LET US SUGGEST
THE METAL**

● In determining which fence will prove most satisfying in appearance and most economical first and last—two points are vitally important—Style and Metal.

Page offers a wide range of styles in four different metals—each supremely resistant to corrosion—each doing its best work under special atmospheric conditions:

- 1 Page "Alcoa" Aluminum
- 2 Page Armco Ingot Iron
- 3 Page Copper-Bearing Steel
- 4 Page Highland Wrought Iron

● Call in a Page Fence Expert before you make a decision. He is in a position to offer impartial advice on the metal best suited for your purpose. No obligation. New booklet "Border Patrol" free for the asking. Page Fence Association, 520 No. Michigan Ave., Dept. G3, Chicago, Ill.

*America's first
—since—*  *wire fence*
1885

PAGE

Page Fence is a Product of The Page Steel/Sheet Company, an Associate Company of American Chain Co., Inc.

*nation-wide service
through 32 service plants*

FENCE

Fence of Armco Ingot Iron fabric is exclusive with Page.

CHAIN LINK OR ORNAMENTAL WROUGHT IRON



**THIS NEW, SIMPLE,
EASY ADJUSTMENT
CONTROLS SPEED OF
ROTATION AND ENLARGES
THE SPRINKLED AREA**

HERE is another outstanding feature added to the many advantages of the LARK. . . . A worm-gear adjustment which makes it easy to control rotation of the main stream.

It sets the main stream nozzle in any desired position and keeps it there. No bother or fuss. No tools needed. Simply turn the worm-gear as illustrated.

If you want sprinklers that are SAFE for night sprinkling; that give the grass a thorough drenching; that are always ready when you want them—buy LARKS. Ask about our 10 days' trial offer.



The
**STANDARD
LINE
IS
BETTER**



Greenkeepers the country over have found that it pays to standardize on STANDARD GOLF COURSE EQUIPMENT. It greatly adds to the proper maintenance of the course—as well as greatly increasing players' comfort.

The Standard Line includes Steel Flag Poles, Aluminum or Cast Iron One Piece Hole Rims, Tee Markers, Bag Racks, Fairway, Parking and Special Signs, "Cuts True" Hole Cutter.

All Standard Equipment is fully guaranteed, every item brings you the latest design, quality, material and expert workmanship.

We will gladly send you complete information and descriptive material on request. Write for it today. No obligation, of course.

STANDARD MFG. CO.
CEDAR FALLS - IOWA

CHECK THESE SAVINGS

Here are some actual savings made during the 1931 golf season by clubs which replaced their hand mowers with Ideal Power Greensmower. Club officials will willingly verify the figures.



**THE STURDY BULLDOG
BUILT FOR TODAY'S
FAIRWAYS AND
TODAY'S BUDGETS**

Ideal built the new Bulldog to do these things: Cut smoother, with faster 7-blade units that follow every contour. Pull easier; cost less to buy, less to operate, and give extra years of use.

Lansing Country Club, Lansing, Mich., Henry Chisholm, Greenkeeper, **saved \$120.00.**

Jackson Country Club, Jackson, Mich., Raymond Lampy, Greenkeeper, **saved \$286.00.**

Marywood Country Club, Battle Creek, Mich., Arthur Kennett, Pro and Manager, **saved \$237.60.**

Owosso Country Club, Owosso, Mich., Jas. Rood, Greenkeeper, **saved \$257.00.**

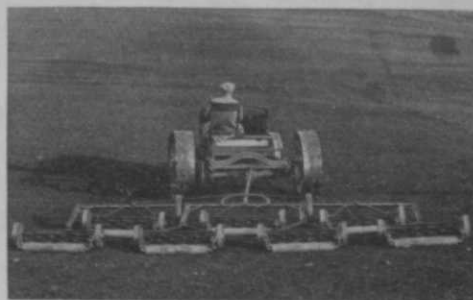
Ridgemoor Country Club, Grand Rapids, Mich., Malewitz Brothers, **saved \$868.00.**

Chemung Hills Country Club, Howell, Mich., Jas. Shepard, Pro., **saved \$290.00.**

Maple Lane Golf Course, Detroit, Mich., Clarence Wolfrom, Greenkeeper, **saved \$327.60.**

You can make these same savings and have finer greens than you ever had before. Send for complete details showing how the above savings were made.

IDEAL POWER GREENSMOWER



You can have 7-gang (16-ft. cut), 5-gang (11½-ft. cut), 3-gang (7-ft. cut). For today's smoother courses, today's tighter budgets—

IDEAL POWER LAWN MOWER COMPANY

446 Kalamazoo Street, Lansing, Michigan

413 W. Chicago Ave.,
Chicago, Ill.

Factory Branches
237 Lafayette St.,
New York City

161 Vester St.,
Ferndale (Detroit) Mich.

... and rush it!

Certainly---from the largest stocks of course maintenance supplies and equipment in the world--the day your order is received.

SEED

BLUE GRASS, FESCUE, RED TOP, RYE BENTS . . . FAIRWAY AND GREEN MIXTURES
Seed prices are lowest in years

•
ARSENATE OF LEAD

•
SEMESAN NU-GREEN

•
FERTILIZERS

•
MOWERS

GREENS .. ROUGH .. FAIRWAY .. TEE

•
TRACTORS . . . HOSE . . . ROLLERS
COMPOST MIXERS DISCERS
DUMP CARTS BALL WASHERS
SPRINKLERS SOD CUTTERS

USE THIS ECONOMY PURCHASE PLAN

Make up a complete list of your course requirements. Send the list to us and on the same day we receive it we'll submit a flat cash quotation that will save you real money.

J. OLIVER JOHNSON, Inc.
WORLD'S LARGEST GOLF COURSE EQUIPMENT HOUSE
MORGAN, HURON & SUPERIOR STS.
CHICAGO



Used on almost half the golf courses of the U.S. and Canada.

GREEN GROWS THE GRASS

with Economy Sprinklers

Because of simple and positive water control, greenkeepers using the Economy Snap Valve with Quill attachment are keeping their golf courses fresh and green and their expenses down to a minimum. For speed, economy and efficiency with less labor and upkeep, install Economy equipment.

ECONOMY Sprinklers

ECONOMY IRRIGATION CO., Inc.
21 Spokane St. Seattle, Wash.

Write for the name of our agent nearest you.

BUY GREENS that withstand heat!



Lay them down like a carpet!

Hundreds of landscape architects, golf and country clubs, greenkeepers, parks, athletic fields, estates, homes, etc., use Illinois Grass Co.'s True Washington Strain Creeping Bent in solid turf form. Our greens withstood the heat waves of the past two years like nothing else. Furnished in rolls ready to lay down like a carpet. Extremely hardy and uniform in texture; is mowed with a putting green mower and is hand-weeded at our nurseries. Guaranteed to grow vigorously into rich, velvety greens if properly cared for. Our scientific nursery methods of propagation and growth are unexcelled. Also sold in stolon form, packed 250 sq. ft. to the bag, same high quality as the turf. We also grow Blue Grass sod.

Write today for prices, samples and facts about our unusual service.

J. A. CARTER, Sales Agent—75 E. Wacker Drive, Chicago, or the nurseries at

ILLINOIS GRASS CO.

18455 Reigel Road, Dept. 302, Homewood, Ill.