

trogen fertilizer was emphasized. Dr. Monteith pointed out that this system of fertilization has been found to give satisfactory results on virtually all soils suitable for green construction. This result is doubtless due to the fact that grass on greens is grown under such artificial conditions that forces which otherwise would be determining factors are largely overshadowed.

### Tells About Motors and Pumps.

In demonstrating the advantages and disadvantages of the split-phase motor and the repulsion-induction motor, Prof. Gallagher of the Agricultural Engineering Dept., pointed out that the repulsion-induction type will not only start with a heavy load but will come up to the maximum speed very quickly while carrying the load. Only about 50 per cent more current than its rated running current is used by a repulsion-induction motor when starting with a heavy load, thus making it possible to protect the motor by means of a fuse of proper capacity. Another advantage of this type of motor is the fact that it will carry a large overload for a short time without damage.

The split-phase motor is much more expensive than the repulsion-induction type, said Prof. Gallagher, but it has a very small overload capacity. In addition it cannot start with its rated load. In starting, the motor uses about seven times its normal load current and in consequence it cannot be adequately protected with a fuse.

Prof. Gallagher stated that all motors of three horse-power or larger should be protected with thermo-overload cutouts in order to protect them against burning out.

Mr. Sheldon of the Agricultural Engineering dept., discussed centrifugal and reciprocating pumps which he designated as types of pumps suitable for use on golf courses. When storage tanks are used, the reciprocating pump is more suitable for small capacities, that is, those of 50 gal. per minute or less. When greater capacities are required, the centrifugal pump is recommended. For watering greens by pumping directly without the use of a storage tank, the centrifugal pump is preferable because when the flow of water is cut down, no excessive pressure is built up. While the centrifugal pump is cheaper, the reciprocating pump is more efficient and also primes itself, while the centrifugal pump must be primed. It was further pointed out that the centrifugal pump is a

## KEEP YOUR GREENS TRUE With DOLCO DIWORMA



### Eradicates Worms and Checks Brown Patch Both at the Same Time

The Spring worming is doubly effective if you use Diworma. It will bring every last worm up and out of the greens and fortify the grass against brown patch.

Diworma is a most effective eradicator and it will save you money. No broadcasting, washing-in or rinsing. Just sprinkle it on—then rake up the dead worms.

Guaranteed uniform strength. Free Test Privilege. Write for folder with full details. 5 gals. \$15.75; 10 gals. \$31.00; 30 gals. \$90.00; 50 gals. \$150.00; Dolge's Sprinkling Cart \$30.00.

### DIWORMA

The C. B. Dolge Co., Westport, Conn.

Please send us \_\_\_\_\_  
gals. of Dolco Diworma.

Name \_\_\_\_\_

Address \_\_\_\_\_  
\_\_\_\_\_  
\_\_\_\_\_

Dept. 1-B

WORM THE DANGER AREA  
AROUND EACH GREEN WITH  
DIWORMA  
Keep Chip Shots True, the  
Short Game Accurate

## REDUCED PRICES On The SIX BALL CLEANER



- One to Six Balls at a Time.
- Ejects Balls When Cleaned.
- It Does Not Splash.
- No Gears or Springs.
- Avoids Delay on the Tee.
- Requires Very Little Care.

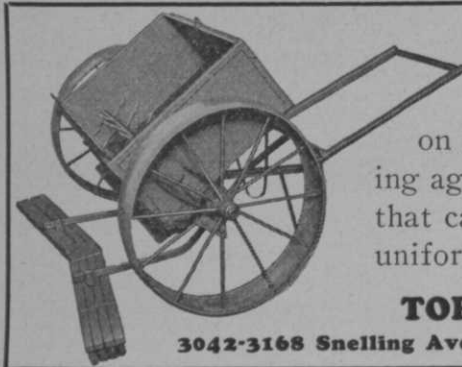
CLEANERS, Each .....\$6.75

METAL STAKES, Each..... 1.50

Prices F. O. B.

THE W. G. MFG. & SALES CO.  
33 North High St. Columbus, Ohio

Or at Your Dealer



## Toro Top Dresser

A great labor-saver . . . proved out on hundreds of golf courses. Revolving agitator, flexible brush, large hopper that can be tilted to any angle, insuring uniform flow. Write for full information.

**TORO MANUFACTURING CO.**

3042-3168 Snelling Ave.

Minneapolis, Minn.

high speed unit and starts easily, while the reciprocating pump starts with a heavy load, thus necessitating a motor with a high starting torque.

### Advices on Landscaping

Prof. Halligan, of the Dept. of Landscape Architecture, discussed growth habits and other characteristics of various hardy shrubs and trees suitable for use in increasing the attractiveness of Michigan golf courses. He gave examples of undesirable plant combinations and then suggested many harmonious groupings and arrangements of plant materials which would lend to the beauty of the course. Various placements of trees and shrubs were described, designed to add materially to the subtleness of the course and thus appeal to the sporting spirit of the players.

### Appraise Topdressing

One interesting feature of the course consisted of the examination of topdressing soils brought in by the greenkeepers. There were many samples of such soil presented. During the course the greenkeepers were asked to examine these soils and pick out those which they thought were of superior merit. Later, Dr. Tyson, of the Soils dept. and Dr. John Monteith, Jr., of the Green Section, judged the samples and selected the three which they thought were superior. They also selected those which they thought had outstanding defects. These selected samples were then

presented to the greenkeepers for examination and study.

### Pest Problems Discussed

Prof. Pettit, of the Entomology dept. was bombarded with questions regarding the sod webworm, which caused much damage on golf courses during the past season. Professor Pettit recommended the use of *pyrethrum*; which is an extract from a Persian plant. Experiments now under way to acclimate the Pyrethrum plant to conditions in the U. S., in order to supply a cheaper source of this insecticide. The extract of pyrethrum is contained in various commercial compounds, such as Evergreen. Prof. Pettit recommended that such material be used strictly according to directions on the package, as the commercial preparations are of different strengths.

For control of ants, Prof. Pettit suggested a mixture of one part Paris green to sixteen parts dark brown sugar. This poison, sprinkled over the grass, will be carried as food to the nests of the ants, thus eradicating the colony. Some question was raised regarding the advisability of using Paris green, which contains copper, on greens, since an accumulation of copper from the use of Bordeaux and other copper-containing compounds may prove detrimental to the grass.

In the treatment of white grubs Professor Pettit pointed out arsenate of lead is

## CADDIE BADGES

Time Clocks—Locker Numbers—Tags—Stencils

**The C. H. HANSON COMPANY**

General Office and Factory  
303 W. ERIE STREET

SEND FOR CIRCULARS  
CHICAGO, ILL.

City Salesroom  
188 N. CLARK STREET



not entirely satisfactory under all soil conditions. He suggested the use of carbon disulphide emulsion. The strength of the emulsion should be governed by the soil temperature; for example, with a soil temperature of 40 to 50 degrees Professor Pettit recommended 68 C. C. of carbon disulphide per gal. of water. When the soil temperature goes to between 50 and 60 degrees only 57 cc. of carbon disulphide to a gallon should be used. With higher soil temperatures running between 60 and 70 degrees the quantity of carbon disulphide should be cut down to about 45 cc. per gal. After stirring the carbon disulphide into the water thoroughly so as to make a uniform emulsion about 2½ gal. per 1000 sq. ft. of area should be applied and drenched down into the ground with water.

### Tee Business Status Makes Pros Study Prices

ONE OF THE pro business developments of 1931 that threatens lasting injury to a neat bit of pro profits was the retail price attack on patented tees. With slightly over 93,000,000 rounds of golf played during the year and a tee production estimated at 100,000,000, the manufacturers were caught knee-deep in tees and shoved them out on the market at liquidation prices. The situation was thrown out of control by so many of the tee makers being newcomers to the field and having as main assets a small investment in automatic woodworking machinery and hope of escaping patent infringement suits.

The damage done by the hit-and-run club manufacturers was repeated in the tee field. The pros at the 18-hole clubs average about \$200 a year profit on tees. The direct profit is only part of the tee advantage, as the boys have found that tee requirements bring into the shops a lot of people who are subjected to the buying attraction of other well-displayed merchandise.

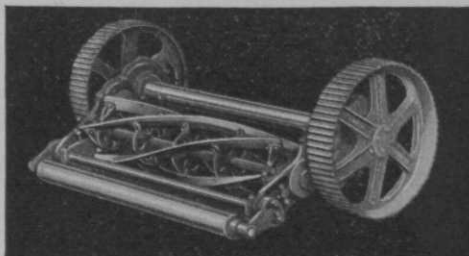
Tees of the leading manufacturers have been selling for 25c a box, with no one getting rich on the deal and none of the customers complaining. Part of the tee sales income went for some effective advertising that had the direct result of speeding the general adoption of the patented tees with a consequent saving of thousands of dollars to golf courses in the elimination of sandbox maintenance. Considerable adver-

## NATIONAL MOWER CO.

839 Cromwell Avenue

St. Paul, Minn.

Where rugged endurance, sturdiness, and quality come first, the latest 1932 Model National Heavy Duty Fairway mower will meet your severest problem.



Using the most powerful frame, double sets of tempered steel cut gears in oil tight cases, Timken Bearings—it lasts longer.

PRICES ATTRACTIVELY LOW

Write for descriptive literature and prices on Fairway mower equipment and tractors. Thousands of NATIONAL mowers have satisfied owners covering every state.



## This Mower does it ALL!

... the steep sides of traps and sharp bunkers; rough at the edge of fairways, around trees and other obstacles; tall weeds and grass on steep hillsides; corners and places no ordinary mower can reach—those are places the GRAVELY works with a smile! . . . With 39" Sickle Bar for tall, rough work, and 30" Rotary mower for ordinary mowing, the GRAVELY positively eliminates tedious, uncertain and costly hand-scything and trimming. Patented Swivel action permits mower to follow contour of ground on steepest hillside. Tools in front, it noses in anywhere. An indispensable machine for special work on large courses. Does entire work on small courses. Pays for itself quickly in money saved. Get the FACTS. Name and address

on postcard brings them. . . . Gravely Motor Plow & Cult. Co., Box 209, Dunbar, W. Va.



**SAVE YOUR GREENS  
AND BANK ACCOUNT  
WITH FUNGO  
AND VEG-E-TONIC**



Operate your course for less this season.

**Investigate -- FUNGO for Brown Patch**

... and other fungus diseases. Also controls worms, grubs and other vermin. Very economical. Makes purchase of Lead Arsenate and other insecticides unnecessary. Don't buy a pound of fertilizer without investigating

**VEG-E-TONIC**



Golfdom's soluble turf food. Cuts expense way down. Free from inert "filler." Send for the McClain Monthly Schedule System of green treatment. Mailed free on request. Our system will save you money.

McClain Bros. Co., 127 Second St., Canton, O.

**IDEAL GOLF EQUIPMENT  
BULL DOG GANG MOWERS  
POWER GREENS MOWERS**

FLAGS,  
POLES,  
ETC.

IF IT'S SOLD BY

**EVANS**

IT'S GOOD

COMPLETE  
EQUIP-  
MENT

**EVANS IMPLEMENT COMPANY**

569-71 Whitehall St., S. W.  
ATLANTA, GA.

**Insure Against Drought!**

USE

**Fertiluvia**

The Perfect Soil Conditioner

For Greens and Fairways

Moisture Retaining

Dry—Weedless

**FERTILUVIA CORP. OF AMERICA**

33 N. La Salle Street

(State 8695)

CHICAGO

VESTAL Announces a New

**HANDICAPPING  
SYSTEM**

*Yes, it is very economical!*

Costs average clubs about 8¢ per member.

Samples on Clubs request

**JOHN H. VESTAL COMPANY**

PRINTERS. SPECIALIZING ON GOLF

703 SOUTH LA SALLE STREET

CHICAGO

tising, done by the originators of the patented tees, has gone to building up the pro shop as a retail outlet for golf goods.

With the transient makers of tees throwing overboard their stocks at cut prices the pro is liable to be stamped into a price-breaking action that will ring down the curtain on pro shop sales and profits in tees. Stocks of liquidating manufacturers' tees have been available as low as \$3.75 a gross, and with the retail price of well-known tees established at \$36 a gross, retailers of the unbranded and unknown goods have about a 1,000 per cent margin inviting them to cut into the pros' tee business. The pros had a sour taste of what this means when they had the 5-and-10-cent stores selling packages of a popular tee for a dime. The tees had been secured in quantity and package by the stores. The pros put up such a howl that the manufacture of the tee being featured went to the expense of securing an injunction against his product being sold at the cut price. After that experience with the tee business getting away it would seem like the pros would make some effort to sell tees at a price allowing everyone to make some money and assuring protection of their market.

The situation is one of the many complexities that the pros have to solve during the coming year, and from the way the line-up looks today they will not arrive at a solution by promoting the collapse of a price position that now lets them make a fair profit and gives the player the utility and convenience of a pro shop supply at a low price.

**RIP, NEW SPRINKLER, GOES AT  
LOW PRESSURE**

Jacksonville, Fla.—R. I. P. Co., 837 Florida ave., is now offering through the golf course equipment and supply dealers their Rip sprinkler, a small unit that its makers state will throw a 50 ft. diameter circle at 50 lbs. pressure and will operate on pressures from 5 lbs. to 100 lbs. The device is simple, having one moving part, and is non-corrosive. The Rip sprinkler is stuck into the ground by its spike stake and may be operated singly or in series. Price is low.



**NEED A GOOD MANAGER?**

Write for GOLFDOM'S list of qualified men seeking positions for 1932.

**WOMEN'S GOLF INTEREST BRINGS SPECIAL "STROKE SAVERS"**

Chicago, Ill.—With strong indications that women soon will predominate on the golf course, alert manufacturers are looking keenly to women's immediate and future needs in playing equipment. Stimulus has developed from a recent authoritative survey which shows that in 1931, 35% of the active players at the 18-hole golf clubs were women, with the fair sex representing between 27% and 31% of all players at the 9-hole course.

"It is fairly safe to predict that the time is not far distant when women players will outnumber men," said Gordon Beckley of the Beckley-Ralston Co. This prediction is further strengthened by the fact that fully 70% of pro-instruction is for women. We are anticipating this situation by bringing out a set of women's 'Stroke Savers,' which are a duplicate of the men's models, but slightly lighter in weight and smaller in grip size, with attractive blue grips to distinguish these clubs from the other models.

"Women are taking to the game much more seriously than at any time in the past," Mr. Beckley added, "and they are not going to be content to use men's clubs any longer. They will demand natural grip sizes, and the new clubs are made with this in view. Leading women golfers believe that the standard of general playing will be much improved when the proper playing clubs are available."

**DUNLOP'S NEW N. Y. OFFICE IN EMPIRE STATE BLDG.**

New York City.—Pros visiting New York are invited to make their headquarters at the new offices of the Dunlop Tire & Rubber Co., makers of the Dunlop Ball, recently opened on the 31st floor of the Empire State Bldg.

Vincent Richards, of tennis fame, is now Sports Director of the Dunlop company. T. J. McGrath continues as Golf Ball Sales Manager.

**IDEAL MOWER 1932 CATALOG IS ISSUED**

Lansing, Mich.—New catalog of the Ideal Power Lawn Mower Co. has been issued. The book describes Bulldog fairway mowers, rough mowers, putting green

**Spray on PURFECK**

**... out goes CHICKWEED!**

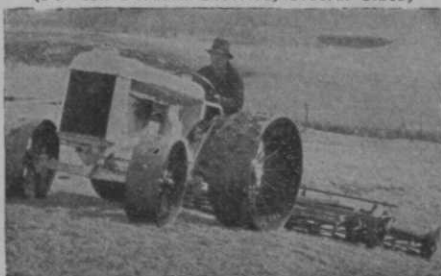
**N**O more hand-pulling, patching or digging! Simply *Spray on PURFECK* and out comes Chickweed,—roots and all. Simple, effective, saves time, money and labor. Used by the country's leading golf clubs.

*Ask your dealer or write direct*

**ADALINK CHEMICAL COMPANY**  
9 Halsey St. Newark, N. J.

**R. H. Wheels are stronger!**

*(For All Fordson Tractors, Several Sizes)*



Rims do not bend—50% better traction—rounded edges—easier steering. Hundreds used for replacing old, weaker wheels. Sold in singles, pairs or full sets.

Prices Reduced

**R. H. Tractor Wheel SPUDS**

quickest to put on or take off. Doubles traction and cultivate turf . . . that's why more than half the U. S. and Canadian clubs use them. Durable and low priced. All sizes for all purposes. Sample spud and circular on request; advise make of tractor and purpose for which intended.

*If your Ford or equipment dealer cannot supply, write direct to*

**R. S. HORNER**

Manufacturer  
**Geneva, Ohio**  
Prices Reduced



**Tags for Bags**

Caddy Badges Score Cards  
Sales Charge Books  
Appointment Books

Write for Samples & Price List

**GOLF-PRO PRINTING COMPANY**

1228 Park Row Bldg.  
New York, N. Y.

JOHNNY & JIM FARRELL  
GOLF PROFESSIONALS  
QUAKER RIDGE GOLF CLUB  
HAMARONECK, N. Y.

Mr. \_\_\_\_\_

Back No. \_\_\_\_\_

**Golf Course Equipment**

The 1932 Catalog is ready. Prompt service on all standard equipment. Worthington Mowers and Tractors. Royer Compost Machines.

Write TODAY for 1932 Catalog.

**GALLOWAY BETTS CO., INC.**  
54 S. Water St., Aurora, Ill.



# Are you planning to attend the National Open?

Or to Visit  
New York  
Before June?



...if so—  
plan to stay  
at **THE  
LEXINGTON**

More comfort. More home-like relaxation after a long, busy day. More satisfaction with the service, and more "hotel value" at more reasonable rates.

Quick, easy transportation to the big golf tournament at Fresh Meadows. If you drive—you can make the round trip without using the congested traffic streets. Make your reservations now!

IN THE SELECT FIFTH  
AVENUE HOTEL CENTER

Economy Rates

\$3.50 - \$4 - \$5 - \$6

**801 ROOMS**

Each with private bath (tub and shower)  
circulating ice water, mirrored doors.

# HOTEL LEXINGTON

LEXINGTON AVE. AT 48th STREET  
NEW YORK CITY

Frank Gregson, Mgr.

J. Leslie Kincaid, Pres.

Direction of American Hotels Corporation

## Empire Golf Course Supplies, Inc.

"Everything for the Golf Course and  
Estate"

11 East 44th Street, N. Y. C.

Telephone Murray Hill 2-3070

**Grass Seed, Fertilizers, Mowers,  
Tractors, Hose, Sprinklers, etc.**

Write for 1932 catalog

HAROLD J. ENGLISH, Pres.

power mower and attachments, Ideal hand green mowers and Ideal power mowers for lawns, parks and cemeteries. A copy will be supplied by headquarters at Lansing or by any of the Ideal branches.

### JIM HERR, VET GOLF MAN, JOINS YOUNG STAFF

Detroit, Mich.—James B. Herr has been appointed field supervisor by the L. A. Young Co., makers of Walter Hagen clubs and balls. Jim is a veteran in the golf business, having been with McGregor 29 years and with Wilson 3 years, prior to signing with Young.

from \$2.50 SINGLE  
3.00 DOUBLE  
ROOM  
and BATH

**HOTEL  
PICCADILLY**  
45 ST. WEST OF BROADWAY  
NEW YORK

NEW • MODERN • REFINED

## ECONOMY



Quick Coupling, Adjustable  
Opening Valve

Recommended for all hoseless sprinkling systems for golf courses, where speed, economy and efficiency are desired. Write for name of our agent nearest you—he will give free demonstration.

**ECONOMY IRRIGATION  
CO., Inc.**

21 Spokane Street  
SEATTLE, WASHINGTON

*A complete service for*  
**DAILY FEE**  
**GOLF COURSE PROJECTS**

Surveys to determine potential play and profits.  
 Plans for group or individual ownership.  
 Course and clubhouse operating routine and maintenance.  
 Complete architectural and construction service.  
 Costs guaranteed by contracts.

**ROBERT H. HUMPHREYS & CO.**  
 1569 Sherman Ave. EVANSTON, ILL.

**BOBBY JONES' COMMENT ON PRO LESSONS IS SHOP AD**

A newspaper article on pro instruction written by Bob Jones and reproduced as a pro shop wall poster by A. G. Spalding & Bros., will be sent to any pro by his nearest Spalding branch.

It's a big sheet, 22 in. wide by 27½ in. long and, under the heading "Bobby Jones Says," advises the ambitious golfer not to depend on questionable "tips" but to go to the pro for basic instruction.

**OFFER ETCHED PICTURES OF HOLES ON GOLF PRIZES**

Philadelphia, Pa.—Stewart Co., 722 Chestnut St., has an interesting idea in golf trophies, sterling silver trays in 6, 8, 10 and 12 in. on which views of holes at the clubs buying these trophies are etched. Prices range from \$13.50 to \$40.50 for the trays. There is an additional charge of \$10 for making the first etching of each scene. Special discounts are given for quantity orders.

**PLANS OF many clubs for 1932 permit cash payments instead of charge basis formerly almost general at ranking clubs.**

**Racks HANDICAP Cards**  
 John Willy Handicap Racks and Cards are standard with practically all the leading American golf clubs. Write for booklet.  
**JOHN WILLY, INC.** 443 S. Dearborn St. CHICAGO, ILLINOIS

**IMPROVES SOIL**  
**Hyper-Humus** for **LAWNS AND GARDENS**  
 Most economical and efficient for putting greens either in top dressing mixtures or incorporated into soil. Write us for literature and practical suggestions.  
**HYPER-HUMUS COMPANY**  
 51 Park Place Newton, New Jersey

**The Peerless Mower Sharpener**  
**NEW MODEL D**  
 Grinds all type of power-driven, fairway, putting green and hand mowers without removing mow wheels or reel knives. Carriage has travel of 42 inches. Grinds with amazing speed and accuracy. 6-inch grinding wheel driven by 1/3 H.P. motor and V belt. Very quiet running.  
 A Reconditioner Attachment can be furnished at an additional price for "lapping in" putting green mowers with emery paste. This Attachment can be quickly clamped to the Sharpener by two clamps. Write for Catalog.  
**The Fate-Root-Heath Co.** 432-468 Bell St. Plymouth, Ohio



**DIAMOND Steel Center TRACTOR SPUD**  
 Sharp until completely worn out. Strong and slender—won't destroy turf.  
**DIAMOND CALK HORSESHOE CO.**  
 4702 Grand Ave., Duluth, Minn.



**Cut Grass and Expenses, too**  
 Budd 4-edged blades for mowers are doing it for others. These easy-to-change blades with multiple cutting edges are the new, modern way to quicker, better cutting. And at much lower expense. Why don't you investigate? Just ask for Price List "G" with the new low prices and full details. A postal will do. **BUDD MFG. CO., Ravenna, Ohio**  
**BUDD·BED·BLADES**



## Advertisers' Index

Adalink Chemical Co.	95
Acme Mole Trap, The	12
Allied Golf Corp.	69-70
American Fork & Hoe Co., The	57
Amsterdam Textiles	67
Argo Specialty Corp.	64
Arlington Hotel, The	98
Armour Fertilizer Works	3
Atkins & Durbrow, Inc.	86-88
Bo-Cal-Bo Company	66
Buckner Mfg. Co.	2
Budd Mfg. Co., The	97
Burke Golf Company	59
Caterpillar Tractor Co.	37
Club Bureau, Inc.	10
Converse Co., Inc., F. S.	10
Crawford, McGregor & Canby Co., The	61
Davis, Geo. A.	16
Dayton Irrigation System	6
Des Moines Glove & Mfg. Co.	66
Diamond Calk Horseshoe Co.	97
Dickinson Co., Albert	87
Dolge Co., C. B.	91
Double Rotary Sprinkler Co.	9
Drer, Henry A.	14
Dunham Lawn Roller Co.	14
Economy Irrigation Co.	96
Empire Golf Course Supplies, Inc.	96
Evans Implement Co.	94
F. & N. Lawn Mower Co., The	15
Fate-Root-Heath Co., The	97
Fertiluvia Corp. of America, The	94
Galloway-Betts Co., The	95
Golf Pro Printing Co.	95
Goodyear Tire & Rubber Co.	35
Graham & Co., John H.	4
Gravelly Motor Plow Co.	93
Hanson Co., The C. H.	92
Horner, R. S.	95
Horton Mfg. Co.	43
Humphreys & Co., Robt. H.	97
Hyper-Humus Company	97
Ideal Power Lawn Mower Co.	7
International Harvester Co.	1
Jacobsen Mfg. Co.	77
Johnson, Inc., J. Oliver	2
Koppers Products Co.	6
Kroydon Company	41
Lewis Co., G. B.	81
Lexington Hotel	96
Manito Chemical Co.	16
McClain Brothers	94
McCullough's Sons Co., The J. M.	13
Michell's Seed House	16
Milorganite	3rd cover
National Mower Co.	93
Nelson Mfg. Co., L. R.	10
Nitrate Agencies Co., The	11
North British Rubber, Ltd., The	54-55
Page Fence Association	12
Peckham, A. N.	89
Pennsylvania Lawn Mower Works	2nd cover
Perfection Sprinkler Co.	16
Piccadilly Hotel, Inc.	96
Premier Poultry Manure Co.	8
Pyratone Products Corp.	66
Reddy Tee Co., Inc.	65
Roseman Tractor Mower Co.	18
Royer Foundry & Machine Co.	14
Schavolite Golf Corp.	63
Scott & Sons Co., O. M.	8
Seaside Bent Co.	13
Sewerage Commission, The	3rd cover
Spalding & Bros., A. G.	38-39
Stauder Mak-A-Tractor Co., E. G.	17
Stump & Walter	5
Suresuits Products Co.	75
Synthetic Nitrogen Products Corp.	79
Thomson & Sons, O. E.	85
Toro Mfg. Co.	17-83-85-92
U. S. Rubber Co.	4th cover
Vestal Co., John H.	94
Vncan Golf Co.	47
W. G. Mfg. & Sales Co.	91
Willy, John	97
Wilson-Western Sporting Goods Co.	45
Wood & Sons, T. W.	17
Worthington Mower Co.	73
Young Company, L. A.	49-50-51-52

## HOT SPRINGS NATIONAL PARK ARKANSAS



**GOLF**  
Grass Greens  
Three  
18-Hole  
Courses

### CURATIVE BATHS

in Radio-Active waters owned and controlled by the U.S. Govt. Splendid for circulatory ills and reconditioning.

**COMFORT**  
and excellent cuisine at the hospitable Arlington Hotel.

For booklet and rates, address

W. E. CHESTER,  
Gen'l Manager

**The ARLINGTON  
HOTEL & BATHS**

Hot Springs National Park, Arkansas

## JOBS

One of the leading American instructors is open for a pro-greenkeeping connection with first-class club. Long experience in golf, thoroughly competent, strict teetotaler, exceptional hard worker. Is an asset that means help to membership campaign and correct, thrifty operation of pro and greenkeeping departments. Highest references. Available now because of financial plight of present connection. Address: Ad 3026, % Golfdom, Chicago.

Well-known veteran professional desires return to club connection after some years in sporting goods store field. Excellent instructor of men and women. Sound business man. Fine personality. Unusual business and golf club experience qualifies him as competent to handle general management of club. Address: Ad 3002, % Golfdom, Chicago.

Position wanted as pro at smaller club or assistant at larger club by single man 28 years old, past 10 years in service of two of the finest professionals in the country. Good club-maker, instructor and on the job in shop selling. Address: Ad 1703, % Golfdom, Chicago.



**Pro-Greenkeeper.** Scot, age 41, member P. G. A. Seven years with one club, ten with another; eighteen winters with one club in Florida. Good instructor, good personality, steady worker, best references. *Address: Box 3027, Golfdom, 205 W. Wacker Drive, Chicago.*

**Greenkeeper**—Age 37, married, 10 years' experience as greenkeeper and builder through Ohio territory; wants to locate in Ohio. Can furnish highest references. For further details write: *Ad 666, % Golfdom, Chicago.*

**Greenkeeper**—I am a young man with ten years' maintenance experience on 18-hole golf course. Seeking position with good course anywhere. Immediately available. *Address: Ad 2029, % Golfdom, Chicago.*

**General Manager** who would like to make a change, five years with present club as Secretary and General Manager; have shown an increased operating profit each year. Thoroughly understand golf course maintenance, construction, turf, etc. Our course is considered equal of any in the district with lowest operating cost of over 25 clubs. Ten years' experience in food and restaurant showed 17.4% increase during season of 1931 over previous year, also profit. First class accountant; can take care of an entire club in a business-like and efficient manner. Age 43, excellent references as to character and ability can be furnished. *Address: Ad 2030, % Golfdom, Chicago.*

**First-class young professional** with outstanding record in tournament play desires position with private club. Has been assistant to two of country's leading professionals; now at public course. Excellent instructor, hard worker and reliable. *Address: Ad 3018, % Golfdom, Chicago.*

**Professional**—Connected with golf seventeen years, successful player and instructor, desires position with established club anywhere. Well educated, ambitious, reliable. Excellent references. Personal interview guaranteed. *Address: Ad 3025, % Golfdom, Chicago.*

**Pro-greenkeeper-manager** available for club requiring highest class operation at profit. Wife excellent assistant in house, experienced in culinary work. Both university graduates with fine personality, ability and successful business experience. Highest recommendation. *Address: Ad 3024, % Golfdom, Chicago.*

**Professional,** Scotch, age 40, married, desires to make a change. 20 years' experience as pro and groundkeeper on Northern and Southern courses. 10 years with one club, seven with another. Fine instructor and expert at keeping course in good shape at low cost. A-1 credit and best of references. *Address: Ad 3023, % Golfdom, Chicago.*

**Pro-greenkeeper** to operate fee course in Northwest. Live city and good chance for man who knows his business and will work. No drifters or playboys need apply. *Address: Ad 3022, % Golfdom, Chicago.*

**Greenkeeper** seeks position. 20 years' experience in new construction work and upkeep. Low, well-balanced budget on labor and expenses. Best of references. *Address: Ad 2026, % Golfdom, Chicago.*

**Successful,** experienced greenkeeper wishes new location. Have good record for excellent maintenance at low cost. Familiar with construction work. Will consider small club that wants man to handle course and clubhouse where light lunches are served. Wife to assist. *Address: Ad 3021, % Golfdom, Chicago.*

**Will Invest.** Man with 16 years' experience, reliable and capable; one who can get business and hold it, will invest capital and services in daily fee or other golf enterprise in Chicago district or Middle West. *Address: Ad 3020, % Golfdom, Chicago.*

**Experienced professional** with excellent record at well known first-class clubs, seeks engagement. Winner of several championships. Excellent teacher, thoroughly dependable. Also is competent in course maintenance. *Address: Ad 2008, % Golfdom, Chicago.*

**Young pro** with 6 years' experience desires change. Age 24, single, college education. Good reputation as instructor; some experience with greens. Best references. *Address: Ad 3009, % Golfdom, Chicago.*

**Greenkeeper** desires position. Age 27, American, single. 4 years' experience as greenkeeper, 3 years' experience in landscape work. Graduate Pennsylvania State College in Greenkeepers' Short Course. References furnished. *Address: Ad 3008, % Golfdom, Chicago.*

**South American Sales Representation**—American golf course construction and maintenance expert, with successful practical experience in these lines and proved sales ability wants to handle sales of American course equipment and supplies in South America. Is in direct touch with every golf club and will do a real job of demonstrating and selling. Highest recommendations. *Address: Ad 3007, % Golfdom, Chicago.*

**Well-known successful manager** of prominent Midwestern club desires new position due to finances of club. Expert hotel and club man and operates at a profit. Will consider moderate salary. *Address: Ad 3006, % Golfdom, Chicago.*

**Experienced greenkeeper** wants employment. Able to take full charge; 7 years on last course. *Address: Ad 3005, % Golfdom, Chicago.*

**General manager** experienced in supervision and operation of all departments of country club interested in new connection. Long and successful experience with golf clubs. Previously was successful hotel operator. Acquaintance with policies and details of operation assures profitable conduct of club with minimum worry to officials. *Address: Ad 3011, % Golfdom, Chicago.*

**Well-known** experienced veteran pro-reenkeeper with highest recommendation desires position with smaller club. Wife experienced in running clubhouse. Available at moderate figure and great bargain in first-class service to smaller club. Hard worker, sober. *Address: Ad 3010, % Golfdom, Chicago.*

**Greenkeeper** desires position. Successful life experience championship courses—first-class maintenance at lowest cost. Authority on all grass diseases. Highest references. Reasonable salary. *Address: Ad 2022, % Golfdom, Chicago.*

**Steward-Manager-Superintendent** desires position with club. Thoroughly experienced man, fine caterer. Age 42, married, no children. Well recommended. Would assume financial responsibility of restaurant operation in substantial club. *Address: Ad 2021, % Golfdom, Chicago.*

**Manager** with successful country and city club experience and thorough training in hotel and club field, desires new location. At present with city club in central state. Expert, thrifty operator and thorough business man. *Address: Ad 3017, % Golfdom, Chicago.*

**Professional-Greenkeeper**—Open for position. 20 years' experience, 9 years with present club. 40 years of age, married. Excellent teacher. Best of references and A-1 credit rating. *Address: Ad 3016, % Golfdom, Chicago.*

**Greenkeeper**, 16 years' experience, 9 years with national championship course, wishes new location. Thorough knowledge of construction, maintenance, water systems, mechanics, etc. First-class references. *Address: Ad 1911, % Golfdom, Chicago.*

**Greenkeeper**, with eight years' experience, desires position with small reliable club. Understands golf machinery and bent grasses. Scotch, age 31; single. Excellent references. *Address: Ad 3014, % Golfdom, Chicago.*

**Greenkeeper** wishes position. Will go anywhere. Prefers New England. Six and one-half years' experience. Attended ten-weeks' course at Amherst last winter. Single, young but capable. *Address: Ad 3015, % Golfdom, Chicago.*

**Turf scientist** who is member of college faculty and active in golf maintenance research and practical work is interested in connection with organization where extensive expert acquaintance with turf culture has commercial value. Competent salesman and executive. For details of qualifications, write and give outline of situation. *Address: Ad 3012, % Golfdom, Chicago.*

**Real pro-business man** wants connection with daily fee course where business-getting ability and method of operating course will make money for course owner. Thoroughly dependable, hard worker, resourceful. Extensive, successful experience at private clubs. *Address: Ad 3019, % Golfdom, Chicago.*

**Greenkeeper** wishes position. Good health, excellent habits, high school graduate. Wife can run club house. Can save you money in maintenance. Good references. *Address: Ad 3003, % Golfdom, Chicago.*

**Greenkeeper-pro**—Extensive, successful experience in maintenance, remodeling, construction, landscaping, golf course architecture, club-making and teaching are my qualifications. Excellent habits. Highest references. Available for job as greenkeeper, assistant pro at big club taking complete charge of outside operation at small club. *For further details, address: Ad 3001, % Golfdom, Chicago.*

**Man and Wife** desire connection with medium size club. Will go any place. Fifteen years' experience. Records and credentials of successful, efficient management. Refined; high type couple. Man born club manager, locker room and caddie service organizer. Wife hostess and expert cateress and cafe manager. Highest recommendation and reference submitted. *Address: I. M. McCabe, 2409 Brookfield Ave., Baltimore, Md.*

**Professional**—Open for position with good club, or private, 30 years old; 12 years' experience. Good player and excellent instructor; good personality. Furnish best of reference. *Address: Ad 3000, % Golfdom, Chicago.*

**Greenkeeper** wishes position with reputable club located in the Eastern States or Philadelphia district. Thoroughly experienced in construction and upkeep. Best of references. *Address: Ad 1907, % Golfdom, Chicago.*

**Pro-Caterer**—Both men with pleasing personality and executive ability, able to take full charge of club. Caterer age 40, experienced chef. Pro age 30. Good instructor. *Address: Ad 3013, % Golfdom, Chicago.*

**WASHINGTON BENT STOLONS FOR SALE** due to over-supply in our nursery. Strain true to name. New Crop. Deliver in Spring. Arthur Snyder, Greenskeeper, Alcoma Country Club, R. D. No. 1, Wilkesburg, Pa.