



NOW, a 9-gang PENNSYLVANIA Unbreakable Golf Mower! cutting a swath of 21½ ft.

This is the largest grass cutter made. Yet for all its great size it is completely flexible and can be quickly converted into 7, 5 and 3-gang outfits if desired. Malleable iron and steel construction — *positively unbreakable*.

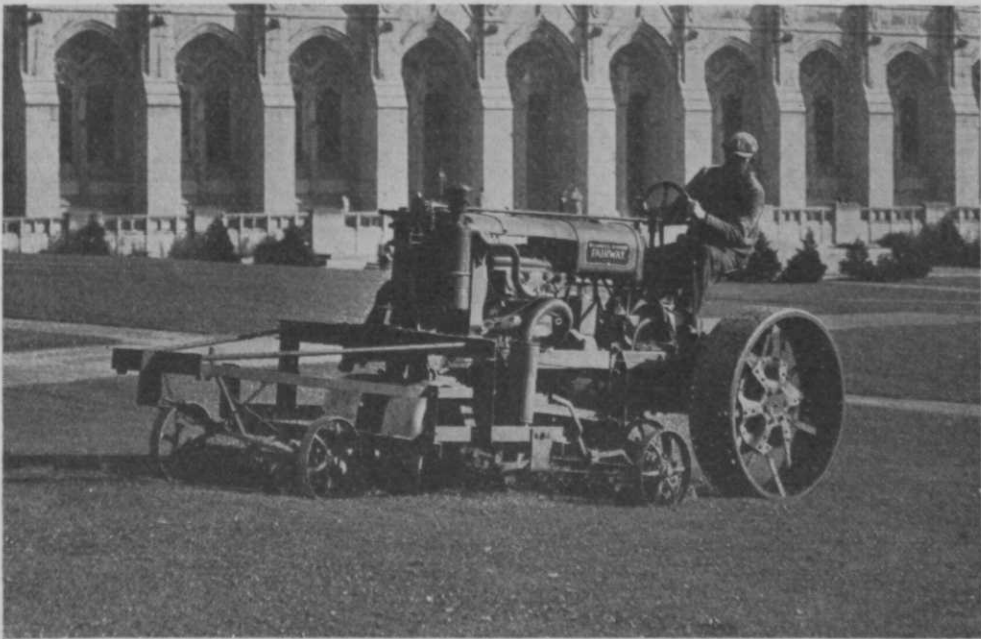
A new Pennsylvania unit—36" cut—a move for economy

The most important gang mower improvement in years. The new Giant Quint cuts a swath of 14½ ft., only 2 feet less than the 30" 7-gang. It costs about \$200 less than the 7-gang, is lower in upkeep and easier to

handle. The new Giant Trio cuts a swath of 8½ ft. and costs only \$35 more than the 7-foot cut machine. Our Super Roller Mower, for greens, will be equipped with 8 blades for the coming season.

PENNSYLVANIA LAWN MOWER WORKS
PRIMOS, DELAWARE COUNTY, PA.

On Campus or Golf Course the FAIRWAY Cuts Expenses



The McCormick-Deering Fairway Tractor owned by the University of Washington. The university library is in the background.

At the University of Washington, Seattle, the McCormick-Deering Fairway Tractor has taken over the maintenance of the campus and is saving considerable money and time compared to previous methods. Mr. Biegel, who is in charge of the grounds and buildings, says the Fairway is the most satisfactory machine they have ever had.

He says that the Fairway saves the work of two men with hand mowers because it is able to cut close to trees, shrubbery, and other places which previously had to be cut by hand. Close quarters and terraces on the campus are easily

handled by the Fairway. More than 200 acres of the campus are in grass, and the Fairway cuts all of it every week.

Low cost of maintenance is important these days. Golf clubs all over the country have had the same experience as the University of Washington—they put the McCormick-Deering Fairway to work and their maintenance expense becomes lower than it ever has been.

See the Fairway at the nearest Company-owned branch or at a McCormick-Deering distributor or dealer. They will arrange a demonstration and tell you more about the cost-cutting ability of the Fairway. Catalogs sent on request.

INTERNATIONAL HARVESTER COMPANY
OF AMERICA
(Incorporated)

606 So. Michigan Ave.

Chicago, Illinois

*The Golf
Tractor*

**MCCORMICK-DEERING
FAIRWAY**

YOU.

Who Are Responsible
for the
FAIRWAYS

Wouldn't it be great to be able to say at the end of next playing season, "Well, fellows, we gave you the finest fairways you ever played over, and what's more, we actually saved you real money on their upkeep?" It is easy and economical to keep fairways luxuriously verdant through the driest summer with the

BUCKNER One-Man Sprinkler System

The savings this system will accomplish for your club will soon pay for its complete installation. That other clubs know this from experience is evidenced by the fact that they use more Buckner equipment than any other make.

Let us send you our latest catalog containing all the facts about fairway irrigation.

BUCKNER MFG. COMPANY Fresno, Calif.

FACTORY REPRESENTATIVES
P. L. Baldock, 2240 Casitas St., Pasadena
Gordon Buckner, Athens Athletic Club, Oakland
Buckner Irrigation Co., Nixon Bldg., Chicago
EASTERN ENGINEERING REPRESENTATIVES
Wendell P. Miller & Associates, 105 W. Monroe St.,
Chicago



Save on your course Supplies

Here's how to do it!

*Pool your list of requirements....
Make up your list of course requirements; complete and specific. Shoot the list to us and on the same day we receive it we'll have the good news on the way back to you in the form of*

.... a flat cash quotation!

MOWERS

GREENS .. ROUGH .. FAIRWAY .. TEE

TRACTORS HOSE ROLLERS

COMPOST MIXERS DISCERS

DUMP CARTS BALL WASHERS

FERTILIZERS

SPRINKLERS SOD CUTTERS

NU-GREEN SEMESAN

SEED

BLUE GRASS, FESCUE, RED TOP, RYE
BENTS ... FAIRWAY AND GREEN MIXTURES

J. OLIVER JOHNSON, Inc.

WORLD'S LARGEST GOLF EQUIPMENT HOUSE

MORGAN, HURON & SUPERIOR STS.

CHICAGO

IT'S FALSE ECONOMY NOT TO USE



NEITHER bare spots nor thin, weedy turf are pleasing to the eye of a golfer or helpful to his game. Rather than play on a ragged course he will go out of his way to find a good one, even despite loyalty to his own club. So it's really false economy to cut down on fertilizer . . . But it is true economy to use Armour's Special Turf Fertilizer on your fairways and greens this spring. Use it to give your grass the plant food it needs. Get a healthy, vigorous, well developed turf that will stand hard play—the kind that will attract golfers to your course.

Write our nearest office for free booklet on "Turf Maintenance." No obligation.

ARMOUR FERTILIZER WORKS

General Offices: Chicago, U. S. A.

10 E. 40th St.
New York, N. Y.

Lexington Bldg.
Baltimore, Md.

First Street
Sandusky, O.

MARCH
1932

Golfdom

Vol. 6
No. 3

Editor
HERB GRAFFIS
Eastern Representative
ALBRO GAYLOR
20 Vesey St., N. Y. City
Tel. Cortlandt 7-4031

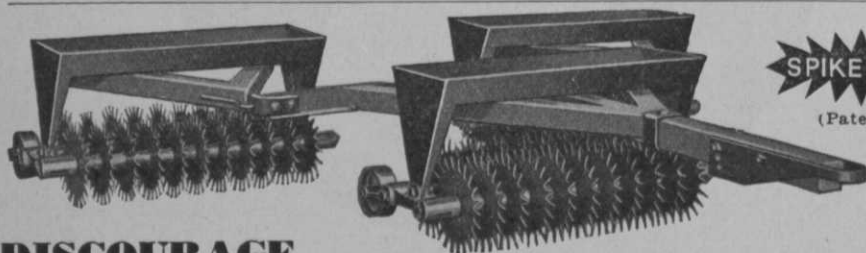
Published 1st of each month
205 W. Wacker Drive
Chicago, Ill.
Tel. STate 3160-1

Advertising Manager
JOE GRAFFIS
Western Representative
DWIGHT H. EARLY
100 N. LaSalle St., Chicago
Tel. CENTRAL 4158

Pacific Coast, **HALLETT COLE**, 211 New Orpheum Bldg. Tel. Tucker 6428,
Los Angeles, Cal.

EDITORIAL CONTENTS

Club Accounting Reform Needed. By Herb Graffis.....	19
Greensmen, Records, Equipment. By W. W. Paape.....	22
Pro 1932 Business No Cause for Tears. By Herb Graffis.....	24
Cafeteria on Wheel Invades Clubs. By Helen Ewing.....	27
Battle Roster Slump with Program. By Jack Fulton, Jr.....	31
Tees Often Below Standard. By Arthur Langton.....	34
Pro "Future Greats" Winter Finds. By Bill Earl.....	42
Dealers' Meeting Consoles Pros. By Pro Veteran.....	46
Pro Competition Requires Thought. By Finley Tynes.....	53
Iron Club Courses Greet 1932. By Carl Horn.....	60
Root Research Tells Soil Story. By Howard Sprague.....	68
More for Money, Manager's Policy. By Al Gaylor.....	82
Michigan Short Course Digested. By C. E. Millar.....	89



SPIKE DISC

(Patented)

**DISCOURAGE
"BROWN-
PATCH"**

"Use Spike Disc Lawn and Green Cultivators Regularly," Say Authorities

SPIKE Disc Lawn and Green Cultivators aerate the turf and produce a moisture retaining mulch. Thus the grass receives its full nourishment, "brown-patch" is discouraged, and the ground does not become hard-baked. Essential also when re-seeding, fertilizing and top-dressing. Seed and fertilizer settle in the perforations made by **SPIKE DISC** and are not washed or blown away. And the thin alloy steel teeth of this modern cultivator do not push back or harden the soil. Tractor and Horse-Drawn models for fairways. Hand models for greens.

Write for Details and Prices to Your Golf Equipment Dealer or:

John H. Graham & Co., Inc., Sales Agents

113G Chambers Street, New York, N. Y.
268 Market Street, San Francisco
565 W. Washington Street, Chicago

Manufactured by Wilder-Strong Co., Monroe, Mich.

Also makers of Dunham Water-Weight Hand, Tractor and Fairway Rollers.



New . . .

Harry Dean's DISCUTS (patented)
The saw tooth edges simplify hole cutting and transplanting. Made with depth gauge.

"Pluggers" in various sizes.

Two Outstanding Bents

Finest Quality—cleaned and re-cleaned until brought up to the highest possible state of purity and germination, special care being given to the elimination of weed seeds.



Seaside Bent (Coos Co. Strain)

Packed in 50 lb. tin canisters, enclosed in strong wooden boxes.

This is a true strain of *Agrostis maritima* (now known as *Agrostis palustris*) that has produced some of the finest greens in America. It is a creeping, quick-growing grass, producing a closely matted turf of fine texture and beautiful color. As all Seaside Bents are not alike, plants showing considerable variation, it is necessary to obtain seed of known quality from a reliable source. Our personal representative in collecting areas passes on all seed supplied by us.

1 lb. \$2.00 — 10 lbs. \$17.50 — 100 lbs. \$150.00

Triple A Bent

Also packed in 50 lb. tin canisters, enclosed in strong wooden boxes.

(Note the 12-inch root growth on piece of Triple A Bent sod, as shown in picture on the right.) →

Triple A Bent is a comparatively new strain of *Agrostis capillaris* that produces turf of the same beautiful color and texture as Velvet Bent. The seed we offer has been re-machined for the elimination of weed seeds and has a purity of over 99%. It has been an outstanding plot at our trial grounds.

1 lb. \$2.00 — 10 lbs. \$17.50 — 100 lbs. \$150.00

Two Special Bent Formulas

Special Putting Green Bent Formula—Consists of imported and domestic grass seeds of the highest quality that will produce a fine uniform and enduring turf.

25 lbs. \$22.50, 100 lbs. \$80.00.

Superfine Fairway Formula (with Bent)—In addition to Bent, contains Ky. Blue, Superfine Red Top and Chewing's N. Z. Fescue. We adapt it to your soil and climatic conditions.

25 lbs. \$14.00, 100 lbs. \$50.00.

Other Turf Producing Grasses

Grass Seeds of Known Quality

South German Bent
Chewing's N. Z. Fescue

Colonial Bent
Fancy Red Top

Bent Stolons
Kentucky Blue

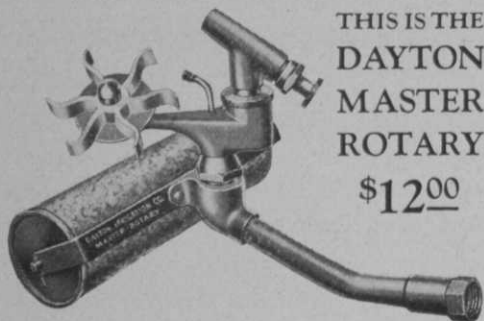


We are prepared to assist with your turf problems.

Stumpp & Walter Co.

Specialists in Golf Grass Seeds, Fertilizers and Equipment

132-138 Church St. (at Warren St.) New York



THIS IS THE
DAYTON
MASTER
ROTARY
\$12⁰⁰

GREENS and TEES NEVER COST SO LITTLE for Sprinkler Equipment

Dayton Sprinklers are changing the complexion of golf club overhead. Costs come down and grass comes up. The Master Rotary (illustrated) covers 80 feet with a pressure as low as forty pounds. Stream angle and rotary speed adjustable without operator getting wet. Roller base—positive operation—rust proofed throughout. *Twelve Dollars—complete!*

The Greenway, single stream, unusually large coverage, with large roller on skid base, has two extra nozzles. Stick-proof, rust-proof, fool-proof. And the price! \$14.00 complete.

The Junior (same as the Master, but with sled base) at \$10 and the Lawn Rotary (at \$6) also are far above similar equipment in efficiency—far below in price.

In Dayton Sprinklers: No gears, no turbines, no motors, no lubricating.

Ask Your Dealer for Details, or Ask

DAYTON IRRIGATION SYSTEM
(Incorporated)

143-151 East Post Road, White Plains, N. Y.

Factory: Dayton, Ohio

Write for information on The Dayton Plan of Under-ground Systems. New in principle—modern in economy—vast in improvement. Truly an expense reducing system. Write—NOW!

KOPPERS

SULPHATE of AMMONIA

New Low Prices

Have you asked your golf supply house for the new low price on Koppers Sulphate . . . the finest, driest sulphate you've ever seen? Its super-fine, non-lumping mechanical condition is due to extra-processing. Koppers Sulphate is packed in moisture-proof 100-lb. bags that make it ideal for handling and storing. Stocked by leading golf supply houses everywhere. Be sure to include Koppers Sulphate in your 1932 budget.

KOPPERS

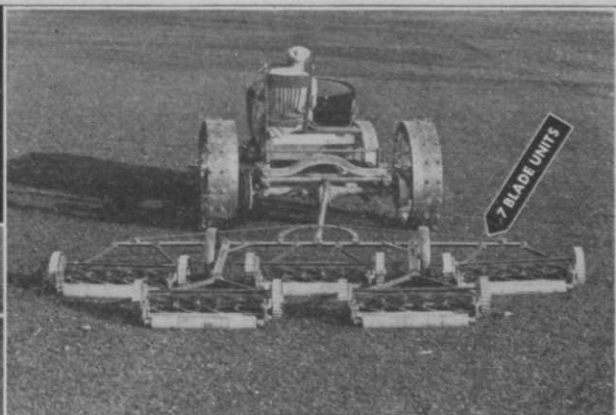
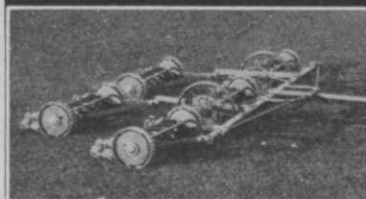
Improved WEED KILLER

Kill dandelions, poison ivy and other noxious weeds with this new, thoroughly-tested product. Toxicity lasts only a short time and grass seed can be sown in from two to four weeks' time. Koppers Weed Killer contains about 27% nitrogen, largely available as plant food after toxicity has disappeared. Non-inflammable and non-explosive. In crystal form, conveniently packed in 3-lb., 25-lb., 50-lb. and 100-lb. containers. Write for descriptive booklet and prices.

KOPPERS PRODUCTS COMPANY

PITTSBURGH PENNSYLVANIA

IT'S THE **NEW**
IDEAL BULLDOG!



THE NEW IDEAL BULLDOG FAIRWAY MOWER HAS THE EDGE ON PRICE, ON EASY PULLING, ON SMOOTH CUTTING...

Get these points on the new Ideal Bulldog:

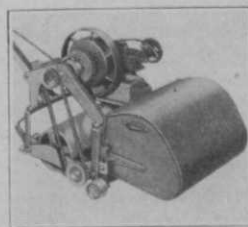
1. Costs Less—Operates for less—Will last longer.
2. Pulls easier, because excess weight is avoided.
3. Cuts smoother, because the high speed, 7-blade Bulldog units hug the ground without bouncing—and follow every contour. Light and

speedy, yet rugged enough for the toughest job.

Available in 7-gang, 16 ft. cut; 5-gang, 11½ ft. cut; and 3-gang, 7 ft. cut.

So simple—there are no springs or gadgets. So strong—these new mowers mean year after year after year of good cutting—with hardly a penny for repairs.

FINER GREENS WITH THE IDEAL POWER GREENSMOWER



Many of America's finest clubs have purchased the Ideal Power Greensmower because it does the most perfect job of cutting possible—incidentally they appreciate the labor saving feature as well.

IDEAL

GOLF COURSE
EQUIPMENT

IDEAL POWER LAWN MOWER COMPANY, 446 Kalamazoo St., Lansing, Mich.

Factory { 413 W. Chicago Avenue
Branches { Chicago, Ill.

237 Lafayette Street
New York City

161 Vester Street
Ferndale (Detroit) Mich.

DEALERS IN ALL PRINCIPAL CITIES



You Need This Free Booklet

Every greenkeeper, every pro, every club official interested in a better golf course should have a copy of "The Putting Green." It has 40 illustrated pages of unbiased information on grasses, construction, planting and care of greens. Ask for your copy.

Here are a few new comments from those who already have it:

"The Putting Green" was read by Mr. Stephenson and myself. He has been loaning the book to others always insisting that it be returned.

—E. F. Schmidt,
2227 Densmore Drive,
Toledo, Ohio.

"The Putting Green" received and found very interesting. It should be in the hands of all greenkeepers.

—D. R. Niederlander,
9 Parkland Place,
St. Louis, Mo.

Your book is the best I ever saw.

—D. C. Sullivan,
Sparta, Wis.

I have mislaid the copy you sent me and want a replacement and also copies for the other two members on my green's committee. Your book is one of the best I have ever seen. Sensible, sane and safe.

—F. H. Jackson, M. D.,
Houlton, Maine.

A very fine piece of work.

—J. E. Schipper, President,
Briar Hills Country Club,
Briarcliff Manor, N. Y.

LET US QUOTE ON SEEDS

G. M. SCOTT & SONS
COMPANY

SCOTT'S
SEEDS

MARYSVILLE
OHIO

turf

Players see it
with their
own eyes

*---it can't give
any alibis!*

IN these days of competition for play it's useless to explain the poor condition of turf on your own course when so many of your members have seen such fine turf on neighboring courses. More than any other factor their game depends on the condition of greens and fairway turf . . . it's before their eyes constantly; and those eyes are critical, too.

Improve your turf with a natural grass food and stimulant. . . .

PREMIER POULTRY MANURE

A natural grass food and stimulant . . . a turf builder that has proven its value over a period of many years on hundreds of America's finest kept courses. Use PREMIER this year . . . it's the economical way to protect and increase membership patronage.

*Write for literature and name
of nearest dealer*

PREMIER POULTRY MANURE CO.
327 South La Salle St. Chicago, Ill.

DOUBLE  ROTARY
REG. U.S. PAT. OFF.
SPRINKLER
 Next Best to Rain,

NEXT BEST TO RAIN...
for
**Early Spring Care of
 GREENS and FAIRWAYS**

The gentle shower of the Double Rotary Sprinkler puts your course in prime playing condition *early!* Starts tender turf sprouting. Does not wash or pack newly planted grass seed. Distributes water more nearly like gentle rainfall than any other mechanical means yet devised. No danger of surface or sub-surface puddling. Assures you mature mid-season greens and fairways that are smooth and speedy right at the first of the season regardless of dry weather.

A Big Water Saver!

The famous Double Rotary principle assures better sprinkling with less water. Gives constant, even, thorough distribution over any circular area up to 80 ft. (more than 5,000 sq. ft.) or down to 15 ft. in diameter, according to pressure.

The Double Rotary Sprinkler is always ready for instant action. Like having "a gentle shower" right at your finger tips. Self-operating—saves cost of an attendant. Easily moved on sturdy skid base. Scientifically constructed of finest materials for years of trouble-free service. Bronze and steel gears operate in bath of oil. **GUARANTEED.** Thousands in use on the nation's finest courses.

ASK YOUR PRO—If your club Pro or local dealer cannot supply you with a Double Rotary Sprinkler, order direct from this ad.

Try 10 days. If not satisfactory, return sprinkler and your full purchase price will be refunded. Descriptive literature on request.

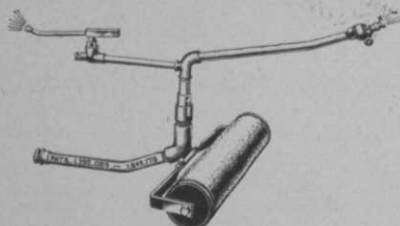
DOUBLE ROTARY SPRINKLER CO.
 106 Coca Cola Bldg. Kansas City, Mo.



The Double Rotary Junior
 —The ideal, all-purpose sprinkler for home owners. Has all the proved features of the above Heavy Duty model, plus a stationary sprinkling feature that also permits sprinkling in a straight line. Guaranteed.



And Now..
a positive, worm-
gear adjustment
controlling speed
of rotation



**"The
 Lark"**



*Note the worm-gear,
 positively controlling
 direction of nozzle.*

Another advantage is added to the many superiorities of the LARK. A positive worm-gear adjustment controlling the speed of rotation of the sprinkler simplifies the "setting." Note the thumbscrew in the small illustration. By simply twisting this screw, the nozzle of the sprinkler is elevated, lowered, or turned as desired. Easy to operate. No tools needed.

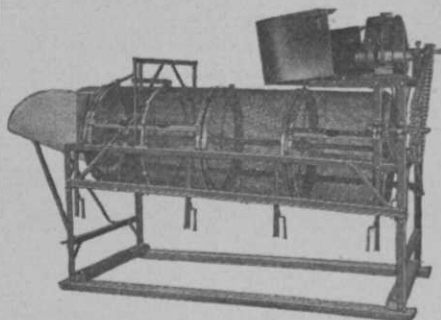
Greenkeepers know and prefer the LARK sprinkler for its never-failing performance; its EVEN distribution; its far-throw; and the other advantages that have made it the leading golf sprinkler.

All parts of the LARK, except roller base and hose pipe, are long-lasting brass. If you want trouble-free sprinklers, buy LARKS.



L.R. NELSON MFG. CO.
PEORIA, ILLINOIS

COMPOST-^{CONVERSE}Rotary Screens-SOIL



"Converse Screens make par greens"

FOR PREPARING SOIL OR SCREENING COMPOST—ONE TO FOUR GRADES AT ONE OPERATION.

DRIVEN BY HAND, TRACTOR OR ENGINE (illustrated).

—BULLETIN ON REQUEST—
 ORDER FROM MAKER OR YOUR JOBBER

Manufactured by
F. S. CONVERSE CO., Inc.
 BOX B JOHNSON CITY, N. Y.

CLUB BUREAU, Inc.

140 So. Dearborn St. Central 3918

CHICAGO

Consultants for golf and
 country clubs having basic
 operating problems such as:

Building Memberships

Increasing Patronage

Adjusting Finances

Augmenting Income

Balancing Budgets