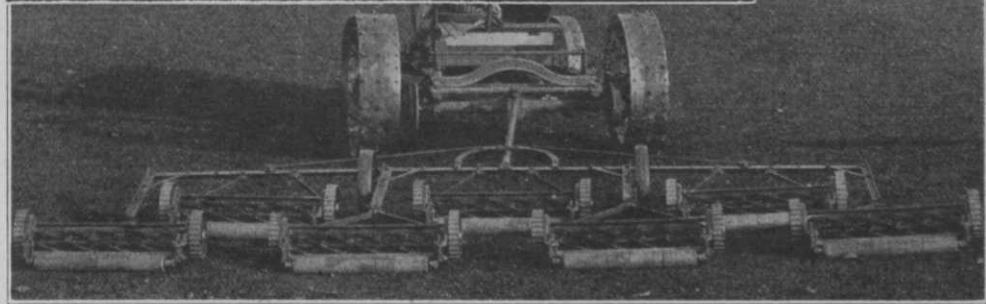


# the New

## BULLDOG FAIRWAY MOWER



Sixteen-Foot Cut, Seven-Blade Reels

### PULLS EASIER — WEIGHS LESS CUTS SMOOTHER

Ideal's new Bulldog Fairway Mower is making fairway cutting *easier—smoother—faster*.

Yes, it *costs less—operates for less—and will last longer*.

7-5- or 3-gang famous Bulldog cutting units—with seven blades—pulled so they cut

smooth—without bobbing or bucking.

Passed every test—on every kind of fairway—at every speed. Simple—strong—and more efficient than ever—the new Bulldog is without equal—bar none.

#### THE LIGHTEST RUNNING POWER GREENSMOWER

Built to Greenkeepers' specifications.

Faster—smoother—lighter—stronger—and more flexible to operate. *Reasons:*

Dependable motor, ball bearings, aluminum parts, seven blade reel—and correct design. Illustration at left shows Ideal Power Greensmower mounted on pneumatic rubber tired transport cart. Greensbrush attachment available at moderate cost.



# IDEAL

GOLF COURSE  
EQUIPMENT

IDEAL POWER LAWN MOWER COMPANY, 446 KALAMAZOO ST., LANSING, MICH.

Factory { 413 W. Chicago Ave.  
Branches { Chicago, Ill.

237 Lafayette St.  
New York City

161 Vester St.  
Ferndale (Detroit) Mich.

DEALERS IN ALL PRINCIPAL CITIES

# HENDERSON'S

## *Tested*

# Grass Seeds

**B**OTH in new construction and in renovation, the quality of the seed you use is of greater importance than anything else. No matter how much attention and effort is given to the other detail, it is the seed that determines the results.

When you buy Henderson's Seeds, you get seed that has been grown by men who have specialized for years in growing certain varieties for us. This seed is cleaned and re-cleaned in our warehouses and then it is accurately tested and these tests are checked and rechecked to be sure that it is up to the Henderson standard. That Henderson's seeds are Tested is more than just an advertising phrase.

*LET us quote you on your requirements for the coming year. We know that the quality of the seed cannot be better, and we believe our prices, quality for quality, will be convincing.*

**Peter**  
**Henderson & Co.**  
 35 Cortlandt Street,  
 NEW YORK CITY

The  
**STANDARD  
 LINE  
 IS  
 BETTER**



*Greenkeepers the country over have found that it pays to standardize on STANDARD GOLF COURSE EQUIPMENT. It greatly adds to the proper maintenance of the course—as well as greatly increasing players' comfort.*

The Standard Line includes Steel Flag Poles, Aluminum or Cast Iron One Piece Hole Rims, Tee Markers, Bag Racks, Fairway, Parking and Special Signs, "Cuts True" Hole Cutter.

All Standard Equipment is fully guaranteed, every item brings you the latest design, quality, material and expert workmanship.

We will gladly send you complete information and descriptive material on request. Write for it today. No obligation, of course.

STANDARD MFG. CO.  
 CEDAR FALLS - IOWA



**SPIKE DISC**

LAWN & GREEN  
 CULTIVATORS

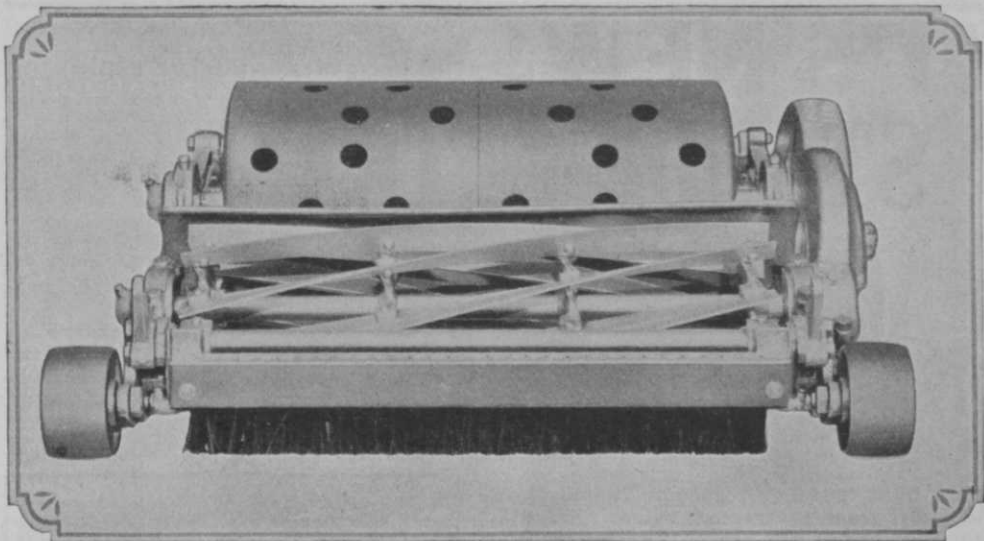
Hand models  
 for Greens,  
 Tractor and  
 Horse Drawn  
 Models for  
 Fairways.

### discourage "brown-patch"

**S**PIKE DISCS aerate the turf and produce a moisture-retaining mulch. Thus the ground does not become hard-baked and "brown-patch" is discouraged. Essential also when re-seeding, fertilizing and top-dressing. Seed and fertilizer settle in the perforations made by Spike Discs and are not blown or washed away.

Write for Details and Prices to Your Golf Equipment Dealer or:  
**JOHN H. GRAHAM & CO., Inc., Sales Agents**  
 113G Chambers Street, New York, N. Y.  
 268 Market Street, San Francisco, Cal.  
 565 W. Washington Street, Chicago, Ill.  
 Manufactured by Wilder-Strong Co., Monroe, Mich.

New . . . . . Harry Dean's DISCUTS (Patented). The saw tooth edges simplify hole cutting and transplanting. Made with depth gauge. "PLUGGERS" in various sizes.

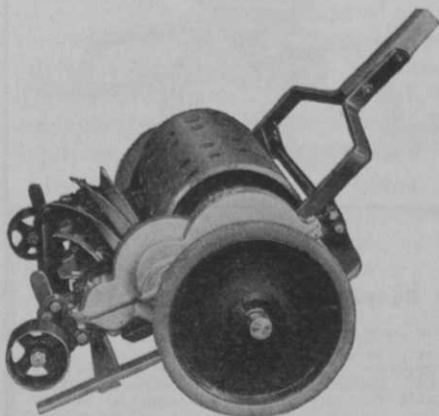


## America's Finest Greensmower is Now Equipped with a Brush

**A** new 1932 feature not found on any other hand putting green mower. Now regular equipment on the Toro Standard Putting Green Mower, this brush lifts the strands of bent so that the reel shears them off cleanly, leaving the green in the finest possible condition.

The special design and operation of the Toro makes it the only greensmower that can, without special effort by the operator, cut the heaviest Bent grass, leaving a perfectly smooth surface on the green. No corrugated or ridge effect to deflect the ball.

The many other quality features of the Toro Putting Green Mower should have your careful consideration before buying any greensmower. Write for the new 1932 Toro catalog.



### New Prices

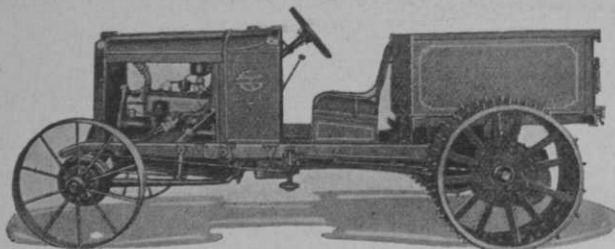
Mower . . . . .	\$55.00
Grass Catcher . . . . .	6.75
Rubber-tired Truck . . . . .	5.00

### Toro Manufacturing Co.

3042-3168 Snelling Ave.  
Minneapolis, Minn.

*Service Stations in Leading Centers*

# IT'S NEW! —the Proven SILENT Drive of the STAUDE <sup>General Utility</sup> TRACTOR

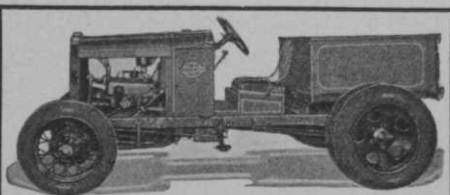


The new Staude with its proven SILENT drive is noiseless — never disturbs players on a golf course. Other new features are air cleaners on oil intake and carburetor, that insure fullest protection to the motor, and demountable steel wheels.

The light, powerful, speedy Staude is the world's greatest tractor value. Manufactured continuously since 1916 and sold on a money-back guarantee. Priced at \$495 and upward. Buy through your local Ford dealer, golf supply house or direct from us.

*Write for Complete Details.*

**E. G. STAUDE MAK-A-TRACTOR CO.**  
2696 University Ave., St. Paul, Minn.



Tractor wheels easily replaced with Ford pneumatic wheels for paved roads.

## Bent

CANADIAN CERTIFIED  
**BENT SEED**

THE J. M. McCULLOUGH'S  
SONS CO.

Cincinnati  
*in the*  
U. S. A.

WILLIAM RENNIE SEEDS, LTD.

Toronto

*in*

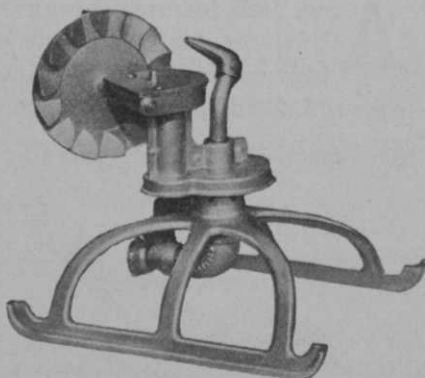
CANADA

*Eastern Dealers may secure spot  
delivery in New York — Call*

**SEASIDE BENT COMPANY**

115 Broad Street

Bowling Green 9-3373



## Toro Rotary Sprinkler

Highly efficient for putting greens and large lawns, especially with low pressure. Breaks up water completely and assures uniform coverage. Adjustable for circular spread from 20 to 70 feet diameter. High grade construction throughout. Write for Toro catalog.

**Toro Manufacturing Co.**

3042-3168 Snelling Ave.

Minneapolis, Minn.

# The F. & N.

"ALL-STEEL"

# Quintet

Fairway Equipment



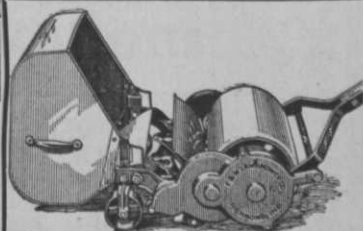
UNBREAKABLE!

**F**OR truly smooth cutting—fast, easy running—trouble-free service—unusually long usefulness—put the famous F. & N. "Quintet" to work on your course.

F. & N. *All-Steel* TITAN Mowers used in this equipment are designed and built especially for this rugged service. These are the only mowers made using the patented, interlocking frame and cutter bar construction which keeps them in rigid and perfect alignment . . . Gears are CUT from drop-forged *steel*, heat-treated—and revolve on Timken Roller Bearings in a constant bath of oil . . . FIVE blades are made of special analysis chrome vanadium steel . . . Every part is accurately machined and fitted . . . Guaranteed positively *unbreakable* . . . Best of all, the TITANS are equipped with the genuine, patented, self-adjusting device—another exclusive feature.

The new *all-steel* gang frame is stronger, lighter, more flexible, more convenient and efficient than ever. It handles mowers in gangs of three or five and fits any tractor. Fully guaranteed throughout.

Write for catalog, special prices and discounts today.



## The F. & N. Putting Green Mower

For obtaining velvety, smooth greens so necessary today, green-keepers everywhere say this mower is easily the finest they ever used. Self-adjusting reel bearings, Alemite oiling, etc. Rubber-tired carriage for transporting is furnished. Write for particulars.



Smooth operation is permanently assured with F. & N. *Unbreakable All-Steel* TITAN Fairway Mowers and with F. & N. Putting Green Mowers—every one is equipped with the genuine, patented F. & N. Self-Adjusting Device in the revolving reel. No difficult hand adjusting or poor mowing with these.

THE

# F. & N. LAWN MOWER CO.

Richmond, Indiana, U. S. A.

THE WORLD'S LARGEST LAWN MOWER MANUFACTURERS

# The Development of modern mowing



Sheep

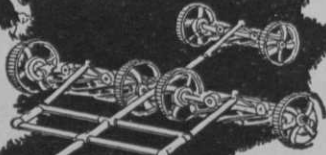
Scythe and Sickle



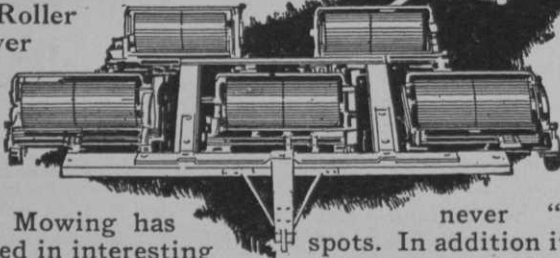
Hay Mower



Side Wheel Mower



Hollow Roller  
Mower



**M**ODERN Mowing has developed in interesting fashion. Sheep kept the grass from getting too long. The scythe and sickle were more dependable but a tremendous labor cost. The old hay mower covered more ground, but did not cut very close. Side wheel gang mowers cut more closely. The modern hollow roller mower cuts even better with its full width traction drive, and

never "scalps" high spots. In addition it rolls the turf, sealing heat cracks, pressing down top turf and gently massaging the roots. It has worked miracles in improving turf growth on stubborn fairways. It is the last word in up-to-date scientific fairway maintenance.

*Write today for specifications and wide list of owners.*

*(Our patents give us the exclusive right to all ganging of Roller Type Mowers.)*

**Roseman Tractor Mower Company**

Evanston, Ill.

New York, N. Y.

**ROSEMAN**  **MOWERS**

# Golfdom

The Business Journal of Golf  
REG. U. S. PATENT OFFICE

Vol. 6

FEBRUARY, 1932

No. 2

## Minnehaha's Pool Adjusts Club to Changed Conditions

**F**ROM VARIOUS articles appearing in the golf publications and other periodicals devoted to sports it would appear that golf clubs, especially the private clubs that make some claims to pretentious clubhouses, well maintained greens and fairways and all that go with them, are having a struggle to maintain membership with dues of a reasonable amount. It is not so difficult to determine why this is so.

Twenty-five, even 20 years ago, golf clubs were devoted to golf. They were organized and supported by men, the majority of whom had reached middle age and in the majority of cases, men who were established in business and who could afford the expense connected therewith.

Women were hardly tolerated on the course, but women insisted on being recognized, which in turn led to the expenditure of large sums on clubhouses, the embellishment of grounds and the injection of social features; all of which added very materially to the expense but added no revenue. Hence, year by year dues were increased and supplemented in many cases by special assessments, the bane of all club members.

Transportation was not such a difficult problem either. In the case of these earlier organized clubs, it was found necessary to abandon grounds on which a lot of money had been spent and locate further away because of the encroachment of the cities.

Men continued to grow older and these elders cared less about playing, or played

---

### SOME DATA ON MINNEHAHA C. C. POOL AND ITS OPERATION

Size: 100 feet long, 40 feet wide.

Cost (including landscaping): \$11,000.

Pool is free to members and their families.

Junior members (over 12 years) pay junior dues. Guest fees: 50c. Guest must be introduced by member.

Space at one end of pool 12 feet wide and 40 feet long reserved for small children and separated from main pool by balustrade that permits free circulation of water to and from filtration equipment. Water in children's section 10 inches to 18 inches deep. Main pool depth varies from 3 feet to 10 feet.

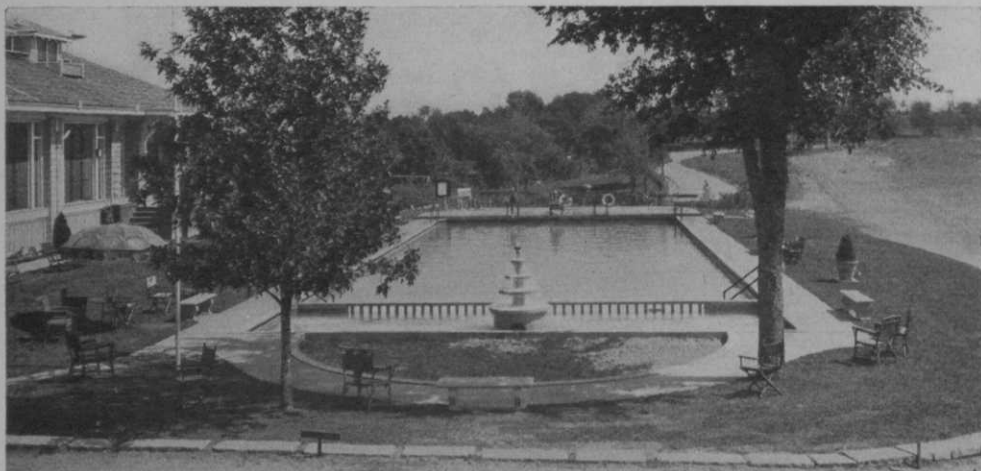
Fountain in the children's section returns 50 gallons of water a minute to the pool when filtration system is in operation, balance of purified supply is put into main pool direct.

Small semi-circular sand beach adjoins the children's section.

---

less often. The advent of paved roads, multiplication of autos, necessity of taking half a day away from business every time they did play, the slow, crawling home through congested traffic to a late dinner, all took toll of the older members. Younger men, just getting established, could neither take the time nor afford the expense of these so-called better clubs.

Public fee and municipal courses multiplied. In the case of the municipal courses, the majority were located in city parks, closely adjacent to the city, with transportation facilities and plenty of parking space for those who used their own cars, and where players *paid as they played*.



Note children's wading pool and play beach separated from main pool at Minnehaha.

Women, especially the younger class, were no longer content to sit idly at home but insisted upon the consideration that was their due as partners in family affairs. There arose the question of long, pleasant drives of an evening, or the neighborhood picture show which "Nellie and the children could enjoy."

### This Club Is Good Example

Perhaps, individually, these were of small moment, but taken collectively they certainly have had their effect on country club affairs the past 15 years as the records of many clubs will show. The Minnehaha C. C. of Sioux Falls, S. D., has gone through all this.

More than 30 years ago a few business men at Sioux Falls organized a little golf club; only nine holes with sand greens and on leased ground. A flock of sheep did most of the fairway mowing. Today, that tract is completely covered with residences.

Twenty years ago a tract of ground was purchased. It was located about 2 miles from the business section, adjacent to one of the city parks, but quite out in the country at that time. Nine holes with sand greens and a clubhouse were constructed. This, in turn, meant a campaign for more members and an increase in dues.

### Growing Pains Start

In 1918 an additional 90 acres of ground was secured; an 18 hole course was constructed with undulating bent greens, a pumping plant was installed to supply water to all the greens, the clubhouse was remodeled, another campaign for new

members was put on, the membership fee raised, dues increased and the social functions elaborated at club expense.

Throughout all this the club was a golf club. Not to exceed 25 women played golf at all. The junior membership was practically nil. There was really nothing to interest the older members, if they did not play golf, save an occasional bridge party. On dance nights a few of the younger crowd would come along any time from 10:30 to 11:30 o'clock, look the field over; dance one or two numbers and then go away. There have been times when the orchestra cost \$10.00 per couple for all who attended. A gradual shrinkage in membership resulted.

A year ago it was decided by the directors that something had to be done and at once.

The question even came up of making it a quasi-public fee course. Then some good soul proposed a swimming pool. There was no place to swim except in the river, open to all comers. Numerous special meetings were held during the winter and early spring; plans were secured, considered, and at a special meeting attended by 60% of the membership, a motion authorizing and instructing the directors to go ahead and construct the pool was made, and to provide ways and means to finance same.

The pool was designed by a firm of specialists in swimming pool construction; and was installed. It has a complete filtration system. Tests are made daily and once a week a sample of the water is sent to the





Pool placed in front of clubhouse porch provides entertainment for "sitters" and is attractive entrance to club grounds.

engineers for microscopical and bacteriological analysis. Weekly bulletins posted show that at all times the water was absolutely pure.

The grounds are beautifully landscaped; lighted with flood lights at night and life guards are in attendance at all times.

### What Pool Did

What did all this accomplish? From the day the pool was opened the club took on new life. Men who had surrendered their memberships, in many instances had them reinstated. New memberships were acquired, so that by the end of August, instead of having a number of vacancies in the membership list, it was filled completely with a good sized waiting list.

Junior memberships more than quadrupled. Many families that formerly spent the summer at some lake stayed at home largely because the children preferred to stay here among their friends and enjoy the pool rather than lead an isolated existence at some lake.

In the old days by 7 o'clock the club was deserted. Since the pool was installed, families have come out to dinner and stayed afterwards to let the young folks swim. Even at 9, 10 or 11 o'clock, on pleasant summer evenings, many were still seated about the pool—or were swimming in it.

Best of all it has served to break up the little cliques that seem to be part of the average club. Men discovered others than their regular foursomes, with whom it was a pleasure to play. Women were not so particular as to their partners at bridge. Dinner dances were held at which as high as 200 reservations were made and the members stayed and danced until the lights were put out. Afternoon bridge

parties for ladies became popular with as many as 150 present. Old time friendships that had been put away in moth-balls for 10 or 15 years were renewed.

The Minnehaha C. C. is not exclusively a golf club any longer; it is a family club, with something to interest and entertain all.

### Giddings Successor to Hines as Mid-Atlantic Chief

**R**EGINALD D. GIDDINGS, supt., Gibson Island G. C., Pasadena, Md., succeeded R. P. Hines, Manor C. C., as president of the Mid-Atlantic Assn. of Greenkeepers at the organization's annual election, held Jan. 4, at New Howard Hotel, Baltimore.

Tom Fischer, Burning Tree G. C., was elected v.-pres., Wm. E. Dunt, Sherwood Forest G. C. re-elected sec., and Richard Scott, Rolling Roads G. C., re-elected treas.

An interesting and timely feature of the annual meeting was the naming of a publicity committee consisting of Mr. Hines, to handle Washington section publicity and Mr. Giddings to see that the association got a publicity break in the Baltimore district.

Members reported much play this winter due to mild weather. In some cases exceptional growth of grass has necessitated cutting greens during December.

**R**HODE ISLAND has four greenkeepers with over thirty years of experience at greenkeeping: John Yule, Newport and Wanumetonomy, 33 years; Hugh Colgan, Point Judith, 32 years; Lawrence Hay, Agawam Hunt, 32 years, and James DiLucio, Agawam, Metacommet and Massasoit, 31 years.

# L. A. Open and Weather Calls For Greensman's Foresight

By ARTHUR LANGTON

**G**REENKEEPER Bill Stewart had golfing conditions of the Hillcrest layout where Mac Smith won his third Los Angeles open, excellent, actually even better than they appeared. Greens from a distance had a black or purplish hue which is the characteristic shade of Washington bent during this season due to cooler weather. The putting surface however, was unimpaired although very fast, causing the downfall of several striving players.

Another feature which caused the expiration of many who aspired on the greens was the surrounding topography. The Hillcrest course is molded over some low-lying hills midway in that twenty-mile stretch which separates Los Angeles from its ocean front, so that it is almost impossible for the player on this course to avoid taking inspirational views of the Angel City, the ocean and the hills of Hollywoodland. These scenic features would not have been significant if they all occupied the same geometrical plane or if they stuck to one plane without wandering off into various picture postcard poses. But they do not and many players on reaching the greens with a commendable score would take a delightful look at the surroundings, estimate the pitch of the green, then putt, only to find that the ball fell away in a totally unpremeditated direction, much to the delight of gallery dubs. Possibly the breathtaking beauty of the surroundings temporarily intoxicated the players, but more probably it was optical illusion. Many of the golf courses hereabouts are that way. Artificial horizons on every green would do wonders towards keeping the players on the level.

The fairways presented a slightly blotched appearance which partly belied their fine playing qualities, the blotches being due to Bermuda grass gone into hibernation, a condition beyond present control. But in spite of these discolorations the fairways provided uniformly good lies. The winner and his score testified as to the technical perfection of this background.

Casual observation upon the Los Angeles

Open, pertaining to greenkeeping and other matters, would indicate that this tournament was all of what the magazine *Time* would be pleased to call a Hollywood success. Stars of the first magnitude pushed and were pushed around in their attempts to gain vantage points from which to view the active participants. Most of them evinced more interest in the goings on than they displayed at football games throughout the past season. Douglas Fairbanks, Harold Lloyd, and Jack Rose of the cinema clan dismounted from a small dirigible during one phase of the activities and proceeded to play a threesome in the tournament without benefit of qualifying. Deponent sayeth naught of their score. One could always identify cinemactors and actresses; they were the ones most embarrassed when within range of the cameras of which there were all kinds present from the box variety to those synchronized with sound apparatus. There was also a radio microphone present into which visiting and local celebrities could and did step up to and say, "Hello folks."

A large and formidable fence made the business of policing the property a fairly simple one. Even this usually prosaic task was made more picturesque by employing nattily attired and mounted patrolmen. So effectively was the course guarded that even Bill Stewart, local guardian of the green, had difficulty in gaining admittance without paying a fee on the first morning of the big event. All other groundsmen were provided with cards identifying them as employees.

The entrance fee was nominal, being 50 cents on the first day, Saturday, \$1.25 on Sunday, and \$1.50 for the finals on Monday. Compared with this the parking price of 50 cents seemed rather steep, especially since parking was not allowed near the grounds on the only street in the vicinity.

## Galleries Behaving Better

The galleries were very well behaved, having after a few years become trap, green, tee, but not competitor conscious;