

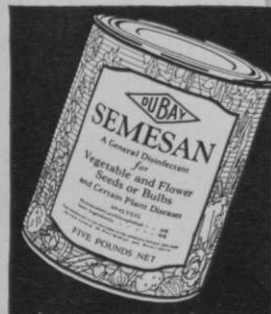
Once every week

to prevent
midsummer
turf injury

by **BROWN PATCH**

August's heat and humidity always increase the danger of brown patch damage. But in most cases, this damage can be entirely prevented by treating greens regularly *every week* with Du Bay Semesan or Nu-Green.

Semesan, recommended where soil is normally fertile, has a remarkable 10-year record for controlling and preventing brown patch. Nu-Green (the only brown patch disinfectant licensed under U. S. Pat. No. 1,787,581) has been used successfully for 6 years. Because it also stimulates grass growth, it is advised where soil fertility is lower. Order from your seedsman or golf supply house.



SEMESAN

25 lbs. \$51.25
100 lbs. 200.00
300 lbs. 585.00



NU-GREEN

25 lbs. \$33.75
100 lbs. 130.00
300 lbs. 375.00



SEMESAN

REG. U. S. PAT. OFF.

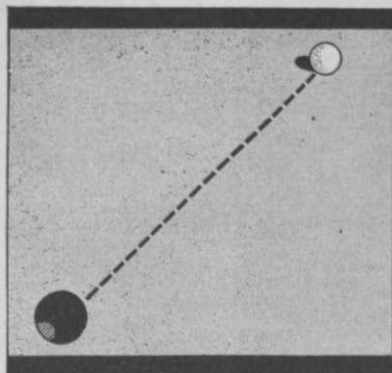


NU-GREEN

REG. U. S. PAT. OFF.



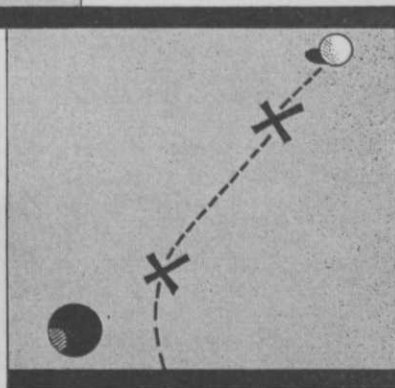
FREE: New pamphlet—"Brown Patch Diseases; Their Prevention and Control." Describes principal grass diseases; tells when they occur and how to prevent them with Du Bay Fungicides. From your seedsman or supply house, or write Bayer-Semesan Co., Inc., Dept 91-A, Du Pont Bldg., Wilmington, Del.



Smooth Greens

No Course
Is Better
Than Its
Greens ▲ ▲ ▲

Control
Grubs, Beetles
Earth-Worms



X marks Worm Casts

with DOW LEAD ARSENATE

MANY greenskeepers solve the grub, beetle and earthworm problem with Dow Lead Arsenate.

"We have used Dow Lead Arsenate for control of grubs and worms and have been more than satisfied with the results", writes one.

Another says, "Relative to the use of Arsenate of Lead on the golf course, I have had exceptionally good success in controlling the so-called Web-Worm."

Another, "We have been using it for two

years and have just about eliminated the worm casts from our greens."

Dow Lead Arsenate has repeatedly proved its remarkable effectiveness. It is a light, finely-divided, fluffy grade that is especially adapted for grub, beetle and earthworm control. It also discourages the growth of chickweed, crab grass, fennel and other weeds.

Keep your greens and fairways in good condition all season. Use Dow Lead Arsenate.

Write for information.



THE DOW CHEMICAL COMPANY
Midland, Michigan

THE TESTED
PYRETHRUM SPRAY
FOR CONTROLLING

SOD WEBWORMS

Extensive tests show that Red Arrow Insect Spray offers a thoroughly dependable way to rid putting greens of sod webworms.

Mr. W. H. Noble, U. S. Dept. of Agriculture, investigating for U. S. Golf Asso. Green Section, reports in January Bulletin, "when used 1 ounce to five gallons water gave practically 100% kill."

Methods of application are remarkably easy. Simply use ordinary sprinkling can and apply 1 gallon of solution to 1 square yard of turf. Within a few minutes insects are forced to the surface and quickly die. Complete control is assured, yet without the slightest danger of poisoning or injury to grass.

• Pyrethrum in Its Most Economical Form

Because it is highly concentrated and scientifically combined with soap, Red Arrow is the most economical and effective of all Pyrethrum insecticides. At leading seed and hardware stores or write direct for complete information. Address Red Arrow Dept. G-3, McCormick & Co. Inc., Baltimore, Md.



RED ARROW
NON-POISONOUS
INSECT SPRAY
(PYRETHRUM SOAP)

Copyright, 1932, McCormick & Co. Inc.

==CUT==

Your Labor & Water Bills

The golfer has a right to good turf. But you must maintain that desirable green fairway within a limited budget. With a Buckner Sprinkler System and one-man control you can slash your present costs for labor, water, and irrigation equipment. Your fresh fairways will attract new players by their contrast to the fading late-summer landscape. Let us explain the many individual features of Buckner Systems and their sound economy basis. Write for our catalog and full information.

BUCKNER MANUFACTURING Co., Fresno, Calif.

Factory Representatives:

P. L. Baldock, 2240 Casitas St., Pasadena.
Gordon Buckner, Athens Athletic Club, Oakland.
Buckner Irrigation Co., 4970 Milwaukee Ave., Chicago,
and Bayside, L. I., N. Y.

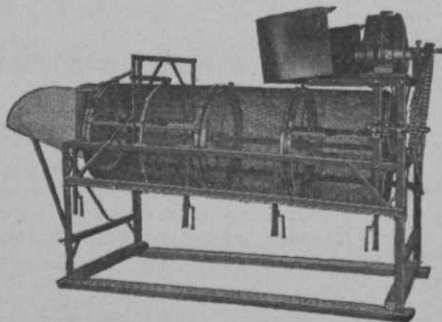
Eastern Engineering Representative:

Wendell P. Miller & Associates, Bayside, L. I., N. Y.

BUCKNER

One-Man SPRINKLING SYSTEMS

COMPOST-**Rotary** CONVERSE
Screens-SOIL



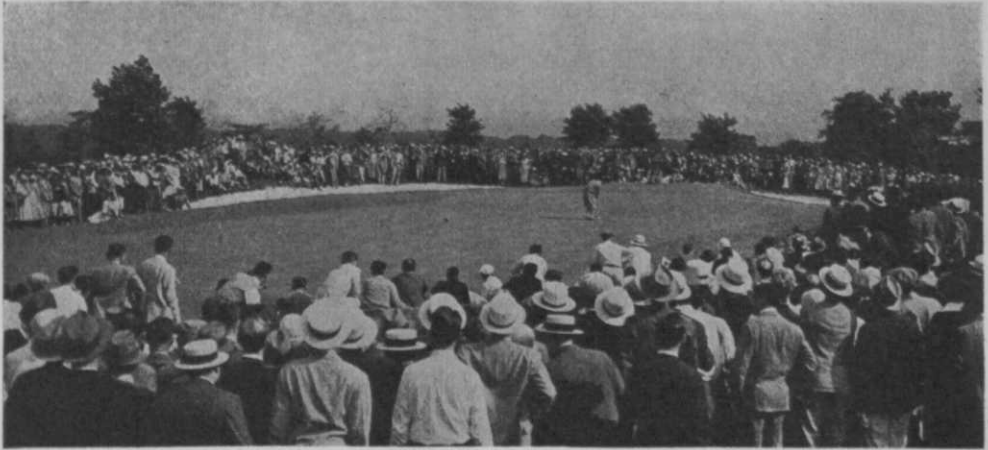
"Converse Screens make par greens"

FOR PREPARING SOIL OR SCREENING
COMPOST—ONE TO FOUR GRADES AT
ONE OPERATION.

DRIVEN BY HAND, TRACTOR OR
ENGINE (illustrated).

—BULLETIN ON REQUEST—
ORDER FROM MAKER OR YOUR JOBBER

Manufactured by
F. S. CONVERSE CO., Inc.
BOX B JOHNSON CITY, N. Y.



The 12th green at Fresh Meadow Country Club, Flushing, L. I., where the U. S. G. A. Open Golf Championship was held this year. Grass Seed for this course supplied by Stumpp & Walter Co.

The Greenkeeper Knows!

Every Greenkeeper knows the importance of the maintenance of turf in a fine healthy condition and that the Fall of the year is the best time to sow grass seed, especially in connection with new work.

While budgets have been cut and economy practised in every department, here is one place where false economy should be avoided, especially as the cost for grass seed is so comparatively small. To neglect this necessary work will mean a far greater expenditure in the future. It is real economy to do it now. Wherever there is a weak spot sow Grass Seed of Known Quality to thicken up the turf and crowd out the weeds.

For Your Fall Seeding, Sow

Grass Seed

of Known Quality

TESTED for PURITY and GERMINATION

South German Bent Colonial Bent Cheewing's N. Z. Fescue Fancy Red Top Kentucky Blue
Special Putting Green Bent Formula Superfine Fairway Formula (With Bent)

TWO OUTSTANDING BENTS

Triple A Bent—A stoloniferous type of *Agrostis capillaris* which produces turf of the deep apple-green color and fine silk-like texture of Velvet Bent. The seed has been processed so thoroughly for the removal of weeds that it consists of over 99% pure seed.

Seaside Bent (Coos Co. Strain)—A true strain of *Agrostis palustris* (formerly known as *Agrostis maritima*) which has produced some of the finest greens in America. Quick to grow and strongly creeping, it yields a closely matted bluish green turf of very uniform texture, similar in appearance to a fine vegetative turf.

Prices on above, or any other turf producing grasses, also Bent Stolons, on request.

Remember:—All our seeds are of the highest quality, obtained direct from the most reliable sources of supply and are botanically true to name. All seeds are new and are cleaned and re-cleaned until they are brought up to the highest possible state of purity and germination, special care being given to the elimination of weed seeds.

Without obligation we shall be pleased to send a representative who, from long experience, is qualified to advise regarding grasses and furnish such other information as is necessary for the best results.

Stumpp & Walter Co

Specialists in Golf Grass Seed, Fertilizers and Equipment
132-138 Church St. (at Warren St.) New York

ASK THESE CLUBS ABOUT *True* Washington Strain CREEPING BENT!

Country Club, Detroit, Michigan
Milwaukee Country Club, Milwaukee, Wisc.
Cincinnati Country Club, Cincinnati, Ohio
Lake Forest Golf Club, Hudson, Ohio
Aronimink Country Club, Philadelphia, Pa.
Purchase Country Club, Purchase, N. Y.
Ruth Lake Country Club, Chicago, Illinois
St. Charles Country Club, Winnipeg, Manitoba
Essex Country Club, Essex, Ontario

The enthusiastic endorsement of **True** Washington Strain Creeping Bent, wherever used, is evidence of its utility and economy. It provides a fine, true putting surface. In addition, because of its vigorous growth and resistance to disease, **it lowers upkeep costs very materially.**

Ask for information and names of clubs in your vicinity that have purchased **True** Washington Strain Bent Grass from me!

HIRAM F. GODWIN

Box A, Redford Sta.,
Detroit, Michigan

Box 51
Wayne, Penna.

Feed your *turf* this fall with a natural grass food...

PREMIER POULTRY MANURE

...and your fairways and greens will be *better—earlier—* next spring. A safe, sane turf diet that has proven its effectiveness on hundreds of America's best kept courses. *Now's the time to plan fall feeding.*

PREMIER POULTRY MANURE CO.
327 S. La Salle St. Chicago, Illinois

Best for turf because —

¶ It is a natural grass food and stimulant. ¶ It is a balanced manure containing 6% Ammonia, 2.50% Phosphoric Acid and 1 to 2% Potash. ¶ It contains no live weed seeds. ¶ Being organic, it aids humus and aids bacterial action. ¶ It can be applied with a minimum of labor and expense. ¶ Being more soluble than other manures, it is more available. ¶ Being finely pulverized, it is quickly absorbed into the soil.

Write for name of your nearby dealer.



Survey of 200 golf clubs proves Barbak costs less per season

It's not the cost of each application, but *the cost of a season's protection* that determines the expense of fighting Brown Patch. Brown Patch may strike today or two weeks from today. No fungicide can absolutely prevent attacks but a good fungicide lessens the severity of violent attacks and wards off light attacks. The fungicide you use must be constantly on guard to protect your greens.

That means that the fungicide with the longest-lasting effectiveness is cheapest in the long run. Barbak, the slowly soluble fungicide, according to this survey, fills this bill. On the average, Barbak protects your greens just about twice as long as other fungicides—saves labor as well as materials.

200 golf clubs using Brown Patch Fungicides found that:

One application of	Lasts	Average
Inorganic Mercury	2—14 days	6 days
Quickly-soluble Organic Mercury	2—13 days	6 days
Slowly-soluble Organic Mercury* *Barbak	2—27 days	10 days

Not only that . . . Barbak is odorless, easy to apply, doesn't cake in the can. It won't burn your turf, whether watered in or applied with a top soil dressing.

Write us for the name of your nearest Barbak distributor, and check these advantages for yourself.

AMERICAN CYANAMID & CHEMICAL CORP.
535 FIFTH AVENUE NEW YORK

211 Barbak XX

TWO ELEVEN

DOUBLE XX

USE WHERE THE SOIL
FERTILITY IS LOW

USE WITH A BALANCED
FERTILIZER PROGRAM

TURF DISINFECTANT



*Have Helped Make
15,000 Holes of
Perfect Golf*

Scott-turfed courses are found in every one of the United States . . . in Canada, Bermuda and South America. Unvarying quality and purity of Scott's Seeds accounts for such universal acceptance by greenkeepers and club officials. Get our new low prices.

O. M. SCOTT & SONS CO.
Marysville, Ohio

*And now—
the "Lark's" little brother . . .
The Economical TEE Sprinkler*



\$6.00

For tees, practice greens, and other limited areas, the TEE sprinkler is ideal. Covers a circle up to 80 feet.

The TEE, little brother of the famous LARK, is sturdy, dependable, and economical. VIBRATOR NOZZLE keeps speed of rotation slow, and covers inner circle with misty spray. Roller base 12" wide.

Ten days' trial on a money-back guarantee basis. Send today for a trial TEE.



L.R. NELSON MFG. CO.
PEORIA, ILLINOIS

Tuned to the Times

Newark, N. J.

•• Before we had the Royer we screened and mixed compost by hand. It took four weeks to topsoil the greens. With the Royer we can either mix or turn over enough compost in a morning to soil all 18 greens and with the material delivered two men can finish two greens a day. ••

NEWARK COUNTRY CLUB,
Frank J. Foley, *Chr. Grs. Comm.*

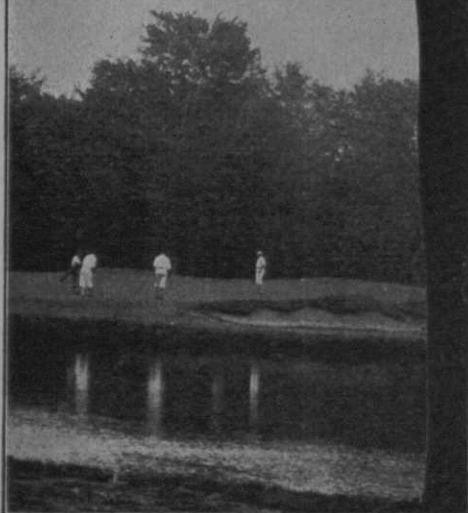
ROYER

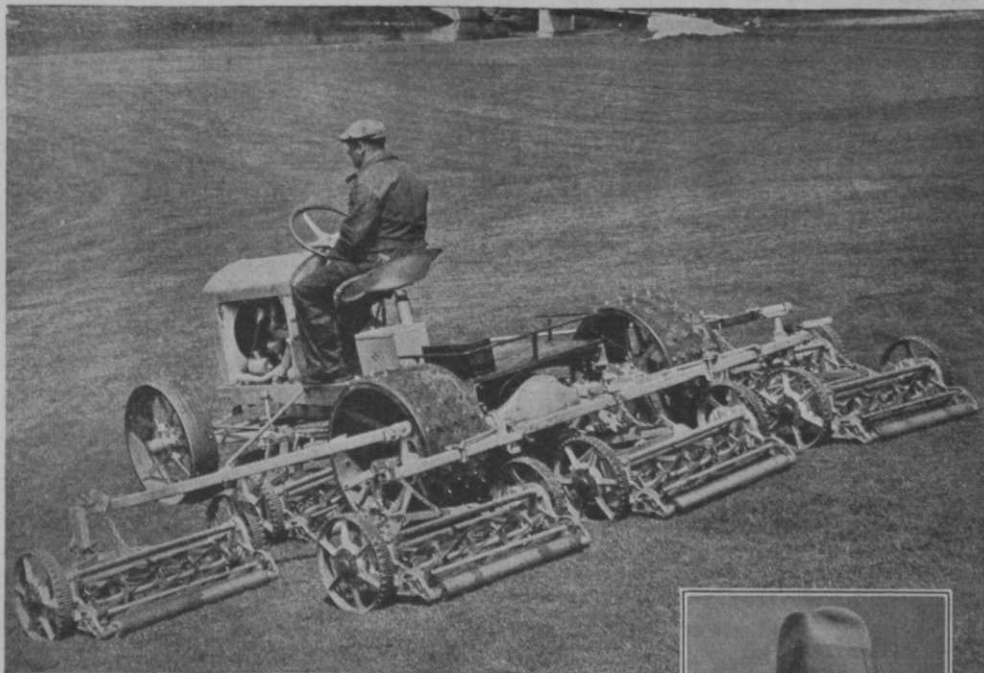
COMPOST MIXERS

save time—save materials—save labor...
all of which means saving money! Send for literature on 'compost economy.

SOLD THRU LEADING GOLF
EQUIPMENT DEALERS

ROYER FOUNDRY & MACHINE CO.
158 Pringle Street (Kingston Station) WILKES-BARRE, PA.





"It acts like a Putting Green Mower on the Fairways," —

says Paul Weiss, Superintendent Lehigh Country Club, Allentown, Pa.



LEHIGH COUNTRY CLUB

ALLENTOWN, PA.

"On our two courses we have standardized on Toro Tractor Mowers. Our seven-year-old Push-Type outfit is still on the job every day and most of the original reels are still in excellent condition.

"In spite of the greatly reduced budget, I feel that our purchase of a Master Seven-Unit outfit is real economy. In speed, economy, and excellence of operation, the Master Seven is unsurpassed.

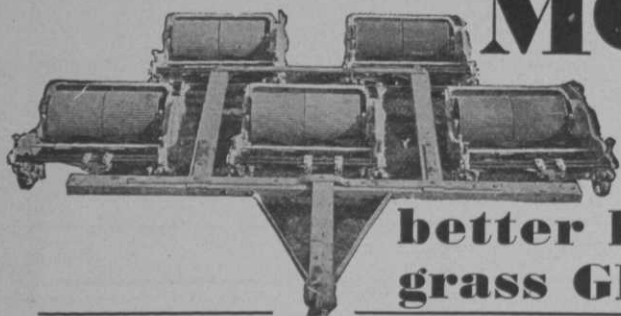
"It acts like a putting green mower on the fairways. A True Master of Mowing."

Yours very truly,
PAUL E. WEISS, Superintendent.

You are making a big mistake if you buy an old-fashioned pull-type outfit without seeing the Toro "Master" perform. Write today for full information

Toro Manufacturing Co., 3042-3168 Snelling Ave., Minneapolis, Minn.

ROSEMAN MOWERS



not only cut
your fairways
better but make the
grass **GROW** better.

Examine a Roseman Mower closely. See how every part is made of quality materials. You will understand why Rosemans cut grass better. Inspect the roller drive. Note how much added power comes from its full width traction. Watch the roller carry the blades clear above high spots of ground, preventing "scalping" of turf.

When the grass is growing fast in mid-summer and should be cut two or three times a week, you can

DEPEND on Roseman's for a swift, clean job.

Roseman Mowers not only cut your fairways better; but make the grass GROW better. Every greenskeeper knows the benefits of light rolling . . . how it seals heat cracks and retains moisture in the soil; "plants" loose surface runners. The gentle massaging action of Roseman Rollers is improving backward fairways everywhere.

Send the coupon below for further information.

Roseman Construction Features:

Timken Tapered Roller Bearings on Cutter.

Hyatt British Tank Roller Bearing on Rear Axle.

Alemite Forced Feed Lubricators.

Guaranteed Non-Breakable Malleable Iron Side Frames, Gear Cover, Bed Knife Shoes and Caster Wheel Forks.

Drop Forged Machine Cut Gears.

LIGHT ROLLER DRIVE, for better Traction and turf development.

Eliminates separate Rolling, and Brings Denser Turf Growth, Healthier Root Development, Prevents Scalping, Eliminates Cuppy Lies, Seals Heat Crevices, Retains Moisture in Soil.

(Our patents give us the exclusive right to all ganging of Roller Type Mowers)

ROSEMAN MOWERS

ROSEMAN TRACTOR MOWER CO.,
Evanston, Ill.

Please send without obligation: Name _____

List of Roseman users. Address _____

Catalog and Prices. City _____ State _____

Golfdom

The Business Journal of Golf

REG. U. S. PATENT OFFICE

Vol. 6

AUGUST, 1932

No. 8

Mid-Season Survey Shows Clubs Weathering Storm Nicely

By HERB GRAFFIS

M ID-SEASON check-up of the golf clubs brings to light cheering news.

Private clubs have suffered membership losses that probably will run as high as 20%, but that figure isn't as serious as it appears offhand, since many of the members who dropped out were rather inactive in previous years. Establishment of "associate" memberships or other classes permitting play on payment of green-fees has made up for some of the gap in the membership.

Public courses are getting a lot of play at low rates because of unemployment, so the toughest spot in the business is the daily-fee courses that are hit on one side by the low price competition of public courses and on the other side by the private clubs dropping the bars on trade tournaments and permitting individual play for green-fees and a small annual payment. However, with the exception of spots like Chicago, Detroit and Cleveland where there has been some over-building of fee courses, the pay-play situation is in better shape than is most business these days.

Women Brighten Outlook

Women's golf continues to be a bright spot in the picture. At the majority of metropolitan district clubs, women's play this year is greater than ever before. Free class lessons given by the pros and re-

duced luncheon prices have been important factors in increasing this play. Signs of the women's heavy play are plain on the tees. With reduced maintenance budgets the greenkeepers can't keep right after tee repairs as they did a couple of years ago. Women's play in the mornings also prevents tee repair work. Men's merciless hacking at the tees is bad enough but when the women get through their assaults, the tees are sadly stripped.

No More Show-Off

Reports from representative clubs show that by eliminating the exhibitionism and extravagances that were O. K. in the old days when precious metals jingled in every pocket, the golf clubs have been able to put themselves in sounder shape than ever before. Golf clubs today are for golf. Despite tough times, retirement of indebtedness is proceeding satisfactorily and sinking funds, long unpardonably absent in the financial operations of many clubs, are being established.

There will be extremely few assessments this year. Typical of the cases in which assessments are being avoided is that of the Glen Brook C. C., Stroudsburg, Pa. Membership is down about 20% and the folks who are active are watching their expenditures, since the club's income is off one-third, part of which is due to lower food prices and green-fees. Expenses have

been reduced one-third and paring has been done in details that are not strictly golf. Consequently the club will get through the year financially right side up. This one-third cut in expenses seems to be a fairly general figure. At Woodland in the Boston district, play is up to normal due to reduction of club operating expenses by a third and broadening of the guest privileges. Golf at bargain prices is the cry in the Boston district, according to Woodland's president, Natt W. Emerson. The clubs' panicky tendencies at the start of the season probably had as much to do with the reduction as did the clamor of the players.

It all means a cut in the cost of golf, which is a good thing for the game so long as the cuts do not throw the clubs back to the cow-pasture era of maintenance. Temporarily waiting lists have vanished, but with the cost of golf now at depression prices, a new crop of golfers is being raised for use of the existing golfing facilities.

Course Labor Savings Large

Further study of labor handling in course maintenance has resulted in some astounding economies in course operation. GOLF-DOM has repeatedly pointed out that the labor item afforded biggest opportunities for saving, but until drastic cuts became imperative, many greenkeepers and chairmen did not realize what was possible in more efficient utilization of labor. John MacGregor, superintendent of Chicago G. C., summarizes the situation by saying:

"When budget slashes got so strong it was a case of the greenkeeper absolutely cutting down or losing his own job, the greenkeeper had not only a strong incentive but full responsibility for savings. Probably some mistakes have been made in trying to effect false economies, but it is a certainty that all of us are handling our labor better than ever before and getting better work from our men. The main danger from now on is not letting the greenkeeper use these recent teachings of experience in making up his 1933 budget. The cutting is in danger of being overdone as some courses already show."

At the Audubon C. C., Louisville, the club shows an approximate profit of \$3,000 for the first six months of 1932 operation. The grounds maintenance expenses are \$3,000 under the same period last year. August with its usual history of serious brown-patch attacks and insect pests will be a testing month at most courses for a

couple of bad weeks can eat away a goodly part of the budget and leave the course with injury that may take months to remedy. Labor economies are credited with being the major item in the Audubon reduction of expense.

Season Memberships Help

At Chagrin Valley C. C. (Cleveland district) the 1932 budget was made on a basis of income 30 to 40% below 1931. The Chagrin Valley officials report they have reduced departmental expenses by amounts varying from 25 to 50%, with the smallest reduction being in course maintenance. Income this season is larger than estimated. Season playing privileges selling for \$50 a year less than the cost of regular membership make up for the drop in regular membership. Regular members, instead of demurring, took to the temporary plan gracefully. The club also allows inactive members to go on an "inactive list" for a year by paying \$50. This relieves the member from the necessity of paying dues. Green privileges are extended on payment of green-fees. This has worked out so this class of member has paid into the club treasury about as much as they would when maintaining their \$150 annual dues of regular membership.

Collections Being Watched

Collections at Chagrin Valley and most other private clubs are in excellent shape. The club probably will finish 1932 in the black more than \$3,000. It looks as though most of those unable to stand the expense of private club membership now have dropped out.

Some of the clubs have gone on a cash basis instead of the usual monthly bill procedure. At one of the blue-chip clubs in the East where the members were hit hard by the market and general business depression, accounts are billed on a weekly basis. Almost complete elimination of posting has been the result.

Some of the smart old clubs that never went in for circus stuff right now are in better shape than most businesses. Columbus (O.) C. C. continues to operate at a profit for the simple reason that its officials long have been in the habit of making income and outgo jibe. Prices were reduced and operating costs cut right along with drop in the membership instead of waiting until a year's red had to be made up.

Mission Hills C. C. at Kansas City, Mo., is another one of the old reliables that