



Making PENNSYLVANIA Quality golf mowers still better...and more economical!

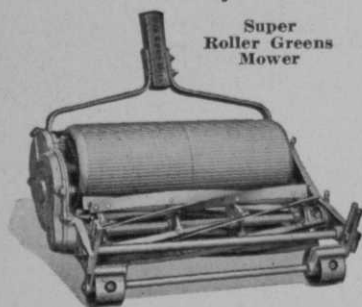
Important improvements add to the efficiency and economy of this year's PENNSYLVANIA golf mowers.

Eight blades in greens mower

Our Super Roller Greens Mower is now equipped with eight blades. Light in weight and easy to operate, it crops the turf close in a true and ribless swath. Internationally famous for its precision.

Unbreakable gang units with 36-inch cut

Now the unbreakable units of PENNSYLVANIA Fairway Mowers can be had in either 36-inch or 30-inch cut. And you may have them hooked up in gangs of three, five, seven or nine.



Super
Roller Greens
Mower

The economy of the larger units lies in the fact that they do more work per dollar invested than the 30-inch cut. All of malleable iron and steel construction and *positively unbreakable*.

Write for our Golf Catalog and prices

PENNSYLVANIA LAWN MOWER WORKS
PRIMOS, DELAWARE COUNTY, PA.

Two Outstanding Bents

Finest Quality—cleaned and re-cleaned until brought up to the highest possible state of purity and germination, special care being given to the elimination of weed seeds.

Seaside Bent (Coos Co. Strain)

Packed in 50 lb. tin canisters, enclosed in strong wooden boxes.

This is a true strain of *Agrostis maritima* (now known as *Agrostis palustris*) that has produced some of the finest greens in America. It is a creeping, quick-growing grass, producing a closely matted turf of fine texture and beautiful color. As all Seaside Bents are not alike, plants showing considerable variation, it is necessary to obtain seed of known quality from a reliable source. Our personal representative in collecting areas passes on all seed supplied by us.



Triple A Bent

Also packed in 50 lb. tin canisters, enclosed in strong wooden boxes.

(Note the 12-inch root growth on piece of Triple A Bent sod, as shown in picture on the right.) →

Triple A Bent is a comparatively new strain of *Agrostis capillaris* that produces turf of the same beautiful color and texture as Velvet Bent. The seed we offer has been re-machined for the elimination of weed seeds and has a purity of over 99%. It has been an outstanding plot at our trial grounds.

Two Special Bent Formulas

Special Putting Green Bent Formula—Consists of imported and domestic grass seeds of the highest quality that will produce a fine uniform and enduring turf.

Superfine Fairway Formula (with Bent)—In addition to Bent, contains Ky. Blue, Superfine Red Top and Chewing's N. Z. Fescue. We adapt it to your soil and climatic conditions.

Other Turf Producing Grasses

Grass Seeds of Known Quality

South German Bent	Colonial Bent	Bent Stolons
Chewing's N. Z. Fescue	Fancy Red Top	Kentucky Blue

As the difference in price between commercial grades and Grass Seeds of Known Quality is now so comparatively small, there is less reason than ever for sacrificing quality for price.

Write for Our Special Prices to Golf Clubs

Stumpp & Walter Co.

Specialists in Golf Grass Seeds, Fertilizers and Equipment
132-138 Church St. (at Warren St.) New York





APRIL SHOWERS

Are forgotten when the hot, dry days of August parch unwatered fairways. But you can have the same velvety April-green course the season through, regardless of drought conditions, when the

BUCKNER One-Man Sprinkler System

Irrigates your fairways. And, too, you'll have the satisfaction of knowing your course is being properly irrigated at a tremendous money saving compared with man-power costs where ordinary equipment is used.

There are more Buckner sprinklers and valves in use on American golf courses than any other make.

May we, without obligating you, send a copy of our latest catalog?

BUCKNER MFG. COMPANY Fresno, Calif.

FACTORY REPRESENTATIVES

P. L. Baldock, 2240 Casitas St., Pasadena
Buckner Irrigation Co., Bayside, Long Island, N. Y.

Buckner Irrigation Co., Nixon Bldg., Chicago

EASTERN ENGINEERING REPRESENTATIVES

Wendell P. Miller & Associates, 105 W. Monroe St., Chicago

IMPROVE THOSE "Hungry-looking" FAIRWAYS



BUILD them up. Develop them so they will appeal to golfers. Fairways, like greens, need plant food—complete plant food—for growth, maintenance, beauty.

Feed your fairways and greens with Armour's Special Turf Fertilizer, the complete, high analysis plant food for turf grasses. Made of best materials, correctly balanced, it produces a heavy, firm, tough growth and a larger, deeper root system capable of supporting it.

Armour's Special Turf Fertilizer is easy to apply. It is economical to use. Write our nearest office for free booklet, "Turf Maintenance."

ARMOUR FERTILIZER WORKS

General Offices: Chicago, U. S. A.

10 E. 40th St., Lexington Bldg., First Street,
New York, N. Y. Baltimore, Md. Sandusky, O.

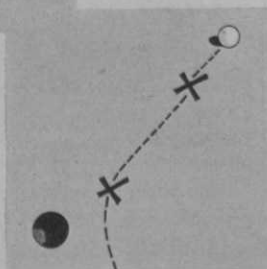
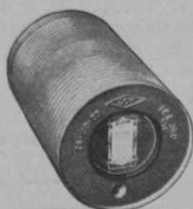
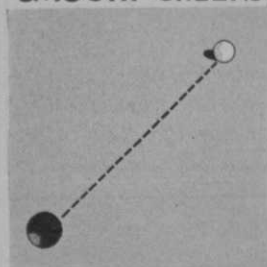
SAVE

YOUR GREENS BEFORE
THEY ARE DAMAGED BY

- GRUBS,
- BEETLES
- AND
- WORMS



SMOOTH GREENS



"X" SHOWS WORM CASTS

IT pays to "get the jump" on grubs, beetles and earthworms early in the season by applying Dow Lead Arsenate. It's true that you need this protection against these pests all through the season—but the best time to use protective measures is before they obtain a foothold.

Dow Lead Arsenate is especially adapted for the control of grubs, beetles and earthworms on greens and fairways. It kills the pests—makes the greenkeeper's job easier. One user says, "I find since having used Lead Arsenate that my greens are free from chickweed as well as earthworms and beetles."

Dow Lead Arsenate is a light, fluffy material that *gets results* without harm to fine turf. Order your supply now. Write for complete information.



DOW LEAD ARSENATE

THE DOW CHEMICAL COMPANY, MIDLAND, MICHIGAN

APRIL,
1932

Golfdom

Vol. 6
No. 4

Editor
HERB GRAFFIS
Eastern Representative
ALBRO GAYLOR
20 Vesey St., N. Y. City
Tel. Cortlandt 7-4031

Published 1st of each month
205 W. Wacker Drive
Chicago, Ill.

Tel. STate 3160-1

Advertising Manager
JOE GRAFFIS
Western Representative
DWIGHT H. EARLY
100 N. LaSalle St., Chicago
Tel. CENTral 4158

Pacific Coast, **HALLETT COLE**, 211 New Orpheum Bldg. Tel. Tucker 6428,
Los Angeles, Cal.

EDITORIAL CONTENTS

Mild Winters. Forecast Turf Woes. By O. B. Fitts.....	21
Keeping Sunny Side Up; Pro Job. By Herb Graffis.....	24
Lower Dues Bring More Members. By Terry Greenfield.....	25
Greenkeeper-Technician Hook-Up. By B. R. Leach.....	27
Careful Planning at Portland (Me.). By Wm. J. Dougherty.....	34
Policies That Invite Pro Prosperity. By Elmer Biggs.....	44
Pros' Pet Peeve. By R. W. Treacy.....	46
N. E. Pros Conduct Business School. By Willie Ogg.....	48
Pro Record Tells Business Standing.....	56
Dept. Heads Hold Own "Directors" Meetings. By Jack Fulton, Jr.....	60
Plea for Proper Accounting Pushed. By Herb Graffis.....	68
Cost Study Boosts Power Maintenance.....	79
Factors of Right Topdressing. By J. F. Fonder.....	84
Greensmen Protect 1932 Course Standards. By Ralph H. Hall.....	87
Fee Courses Show Organization Need. By Herb Graffis.....	91
Greens Subsoil Structure. By Wm. H. Tucker.....	93

Sold on a Money-Back Guarantee

Powerful!

Light weight—speedy—economical. Proven Silent Drive insures quiet running. Pulls five to seven 30-inch cutting units and rollers weighing up to 6 tons. Pulls plows, discs, sprayers. Hauls dirt, etc. Easy to operate and practically no repair bills.

STAUDE GENERAL UTILITY TRACTOR

Manufactured continuously since 1916 and sold on a money-back guarantee. In successful use by nearly 2,000 golf clubs. Buy from your local Ford dealer, golf supply house or direct from us.

• Write for Details •

E. G. STAUDE MAK-A-TRACTOR CO.
2696 University Ave., St. Paul, Minn.



Pneumatic Tired Wheels for Pavements
Steel tractor wheels demountable—may be replaced by Ford pneumatic tired wheels for paved roads.



What the JACOBSEN Power Putting Green Mower Did for the Kilbourn Country Club

It mowed 27 greens from April 12 to October 15 for \$420.24.

- averaged only \$15.56 per green for season.
- reduced cost of cutting greens to THIRTEEN cents each.
- eliminated "Brown Patch" with greens brush attachment (optional equip.).
- kept greens from matting, improved Bent, kept turf healthy.
- brushed top dressing to very roots of turf.

—made dense, excellently-cushioned greens *second to none in state.*

- did it WITHOUT use of any hand mower, *for club owns no hand mower.*
- SAVED club 22c every time a green was mowed, 35c being approximate cost per green if cut with hand mower.

If you want verification of above facts, write Paul Jensen, care of Kilbourn Country Club, Franksville, Wisconsin.

WHAT THE JACOBSEN CAN DO FOR YOUR CLUB, MR. GREENKEEPER.

It can do EVERYTHING for you that it did for the Kilbourn Country Club.

- save you \$750 to \$1,000 per year if you now use hand mowers.
- give your help extra time for keeping fairways, bunkers, traps, tees and approaches in tiptop excellence.
- work your greens so satisfactorily that you can get down on your hands and knees and find no blemished turf.
- turn corners rapidly without scuffing or gouging the turf because of its auto-type differential.
- roll the greens without packing, because of evenly-balanced weight on large rear roller.
- cut finer than any hand mower, because

of its high-speed, 7-blade reel. 19 and 24-inch cutting widths.

- handle with remarkable ease because of separate clutch control of cutting and traction units.
- have greens ready for early-morning players, because it has mowed 18 greens in a little over 5 hours.
- give you the true "sporty" green, the boast of your club.
- emphatically solve the problem of Better Greens at Lower Cost.

Jacobsen Power mowers are already ten years past the experimental period. They saved millions of dollars for users all over the United States and Canada.

Demonstration on your own grounds without charge. Write for catalog. Sales and service everywhere.

JACOBSEN MFG. CO. :: 734 WASHINGTON AVE. :: RACINE, WISCONSIN

JACOBSEN

BUILT TO SAVE RUNNING EXPENSE



MILORGANITE

makes fairways that BUILD MEMBERSHIP . . . fairways that are the very soul of a club.

SPRING FAIRWAY FEEDING with MILORGANITE insures:

- **GREATER ECONOMY** . . . lower prices, higher analysis . . . less leaching.
- **BETTER TURF** . . . continuous, effective growth from single applications.
- **ALL-SEASON SATISFACTION** at LOW per ACRE COST.

More golf clubs use Milorganite than any other fertilizer. Our free booklet, "Better Turf", tells why. Write for it.

Department "G"

THE SEWERAGE COMMISSION

MILWAUKEE

WISCONSIN



Soils? Grasses? Insects? Diseases?

... find your solution to these and other problems of modern maintenance in

GOLF COURSE COMMON SENSE

By G. A. FARLEY

THIS valuable and practical guide to successful greenkeeping explains in detail, the methods of the country's foremost greenkeepers. A complete manual of greenkeeping in simple, usable form; each chapter is rich in working instructions.

Partial Table of Contents

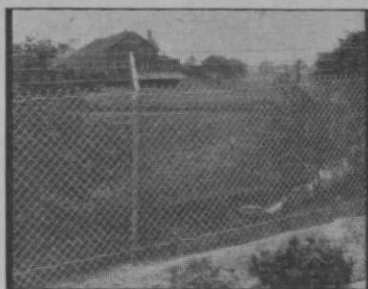
Soils, Fertilization and Growth.
Grasses. Fairways. Hazards.
Weeds and Diseases.
Equipment and Supplies.
Greenkeeping in the South.
Golf Course Trees.
Drainage and Water Systems.
Tees. Putting Greens.
Topdressings and Turf Repair.
Birds, Animals and Insects.
Keeping Course Records.
Growing Choice Flowers.

The price, postpaid, **\$4.00**

GOLFDOM

BOOK DEPARTMENT

205 W. Wacker Drive CHICAGO



**CORRECT STYLE
CORRECT METAL**
●
**BOTH ARE IMPORTANT
IN FENCING**

● In selecting a fence these two points are most important—appearance and endurance.

Appearance depends largely on background surroundings. You're sure to find just what you're looking for in the wide range of Page Fence types and sizes.

Endurance depends *solely* on the metal selected. Page provides for every atmospheric condition and its resulting problem of corrosion with four different metals:

- 1** Page "Alcoa" Aluminum
- 2** Page Armco Ingot Iron
- 3** Page Copper-Bearing Steel
- 4** Page Highland Wrought Iron

● Write for literature and for the name of our representative nearest you. He will be happy to recommend impartially the particular metal that will give you the best service. No obligation. Page Fence Association, 520 No. Michigan Avenue, Dept. G2, Chicago, Ill.

America's first
—since
1885

PAGE

Page Fence
is a Product
of The Page
Steel Wire
Company, an
Associate
Company of
American
Chain Co.,
Inc.

nation-wide service
through 82 service plants

FENCE

Fence of
America
made from
galvanneal
steel is
exclusive
with Page.

CHAIN LINK OR ORNAMENTAL WROUGHT IRON

ROYER

Compost Mixers

- save 70% to 90% in compost costs
- handle lumps or sod, wet or dry
- keep four men busy feeding it
- make highest grade compost

Made in four models, one of which is exactly fitted to your requirements.

Write for booklet illustrating and describing ROYERS and their records.

Save Time, Money, Labor and Material

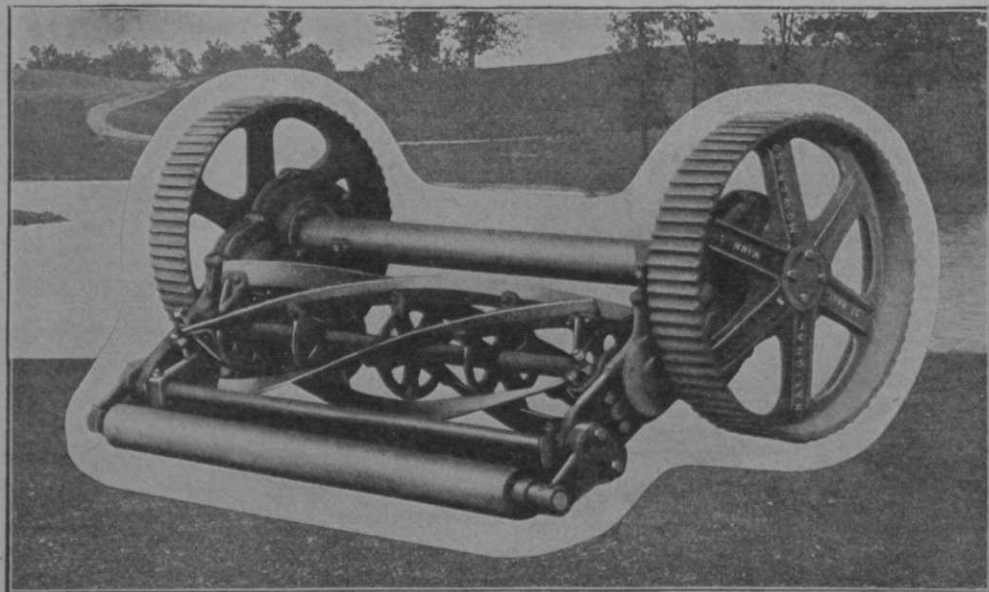
SOLD THRU LEADING GOLF EQUIPMENT DEALERS

ROYER FOUNDRY & MACHINE COMPANY

158 Pringle Street

(Kingston Station)

WILKES-BARRE, PA.



Look in the graveyard of worn-out equipment,

That place where the old mowers go.

On top is the NATIONAL mowing the lawn,

While others lie rusting below.

But joking, ballyhooing and overclaiming aside, the heavy duty 1932 National with its hardened cut steel gears in oil tight cases is truly a sturdy, long-

lived machine. True value is in the quality of its detail which merits your investigation. Built in sets of 3-5-7.

Prices attractively low. Write for catalog.

NATIONAL MOWER COMPANY

839 Cromwell Avenue

St. Paul, Minnesota

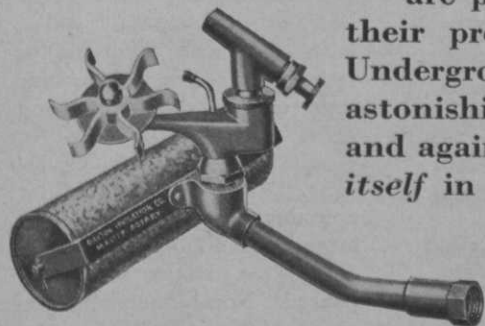
... IT PAYS FOR ITSELF IN TWO SEASONS

Dayton Underground Head in action. Coverage 6500 square feet (100 foot circle), 22½ gallons per minute at pressure of 65 pounds.



DAYTON UNDERGROUND IRRIGATION

GREENS maintenance tumbles, costs are permanently *down*, a fraction of their previous overhead, after Dayton Underground Irrigation is installed. Most astonishing—and we have proved it again and again—the Dayton System *pays for itself in two seasons*, out of savings in previous costs.



THIS IS THE
**DAYTON MASTER
ROTARY**

Unique among portables, this one. Designed especially for low pressure service, it covers an 80-foot circle at forty pounds. Stream angle and rotary speed adjustable without operator getting wet. Positive operation, rust-proof throughout.

\$12⁰⁰
With
**Sled
Base
\$10**

Fully guaranteed for two years —with free service and free replacement of any elements that have not perfectly performed.

New in principle—VIBRO-ROTARY. The Dayton System at least should be investigated by every Greens Committee.

Write for the Dollars and Sense
Facts About Dayton Irrigation

DAYTON IRRIGATION SYSTEM, INC.

143-151 East Post Road

FACTORY—DAYTON, OHIO

White Plains, N. Y.

April

is the month of
urgent demand

we're ready
to ship on a moment's
notice..from the world's
largest stocks of course
maintenance supplies

USE THIS ECONOMY PURCHASE PLAN

Make up a complete list of your course requirements. Send the list to us and on the same day we receive it we'll submit a flat cash quotation that will save you real money.

MOWERS

GREENS .. ROUGH .. FAIRWAY .. TEE

TRACTORS HOSE ROLLERS
COMPOST MIXERS DISCERS
DUMP CARTS BALL WASHERS

FERTILIZERS

SPRINKLERS SOD CUTTERS
NU-GREEN SEMESAN

SEED

BLUE GRASS, FESCUE, RED TOP, RYE
BENTS . . . FAIRWAY AND GREEN MIXTURES

J. OLIVER JOHNSON, Inc.

WORLD'S LARGEST GOLF EQUIPMENT HOUSE

MORGAN, HURON & SUPERIOR STS.

CHICAGO

KOPPERS SULPHATE OF AMMONIA

New Low Prices

Have you asked your golf supply house for the new low price on Koppers Sulphate . . . the finest, driest sulphate you've ever seen? Its super-fine, non-lumping mechanical condition is due to extra-processing. Koppers Sulphate is packed in moisture-proof 100-lb. bags that make it ideal for handling and storing. Stocked by leading golf supply houses everywhere. Be sure to include Koppers Sulphate in your 1932 budget.

KOPPERS IMPROVED WEED KILLER

Kill dandelions, poison ivy and other noxious weeds with this new, thoroughly-tested product. Toxicity lasts only a short time and grass seed can be sown in from two to four weeks' time. Koppers Weed Killer contains about 27% nitrogen, largely available as plant food after toxicity has disappeared. Non-inflammable and non-explosive. In crystal form, conveniently packed in 3-lb., 25-lb., 50-lb. and 100-lb. containers. Write for descriptive booklet and prices.

KOPPERS PRODUCTS COMPANY

PITTSBURGH

PENNSYLVANIA