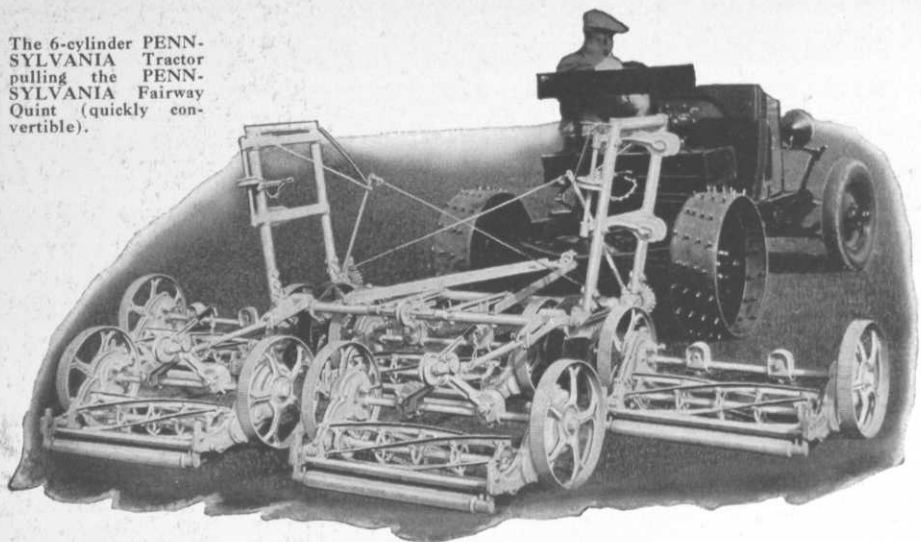


The 6-cylinder PENNSYLVANIA Tractor pulling the PENNSYLVANIA Fairway Quint (quickly convertible).

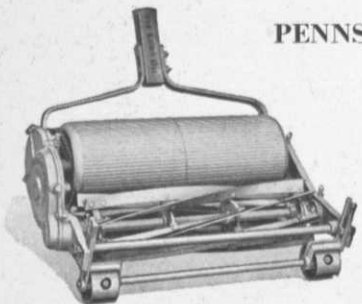


You'll find it easier to keep the course up and the costs down

The 6-cylinder PENNSYLVANIA Tractor—the PENNSYLVANIA Fairway Quint or Trio—the Super Roller Greens Mower—no matter what your “par” for mowing cost may be, these three PENNSYLVANIA Quality Machines will help you beat it. Each is built to do a special mowing job well and to stand the gaff of hard service.

Our attractive GOLF CATALOG pictures and describes these three machines, as well as all the other PENNSYLVANIA mowers for fairways, greens, tees and general trimming. A copy is yours for the asking.

PENNSYLVANIA LAWN MOWER WORKS
Primos, Delaware County, Pa.



The Famous Super
Roller Greens Mower

CHARLES DE LEUW & COMPANY
ENGINEERS
111 WEST WASHINGTON STREET
CHICAGO

November 12, 1930.

Wendell P. Miller and Associates,
105 West Monroe Street,
Chicago, Illinois.

Dear Sirs:

When Riverside Golf Club determined to install fairway irrigation I realized the limitations of general engineering in dealing with the specialized field of golf course irrigation - and advised the Board of Directors that it would be impossible for our firm - even though we are consulting hydraulic engineers for about thirty municipalities - to bring to our club the best in irrigation practice.

Further, I decided that we should select engineers of such standing and proficiency in this special field that we could entirely depend on them for correct advice and sound judgment in the entire project.

Our judgment in selecting your organization to handle the entire matter is verified in the efficient manner in which the project was handled, in the low cost of the system, in the satisfactory results obtained through scientific determination of the rate, duration, density, and extent of the water applications, and in the moderate operating expense.

I should add that your planning of the improvements was such that the club's saving, in electricity alone, will - every two or three years, repay your standard engineering fees.

Our fairways were splendid during the unusual drought of 1930, and our members were delighted with the results of fairway irrigation. I, myself - inasmuch as the entire responsibility for this construction was in me - am especially pleased with your work, and will be glad to answer inquiries from prospective clients as to your capacity for turfied area engineering.

Yours very truly,

RIVERSIDE GOLF CLUB

Charles De Leuw
Vice-President.

If You Are PLANNING FAIRWAY IRRIGATION

Read This Letter!!

IN California and other arid districts, fairway irrigation is a necessity. Players refuse to patronize unirrigated courses. East of the Missouri River, the trend toward irrigated fairways is unmistakable. That is why you are asked to read the above letter. Irrigation projects, if they are to function properly, to give the results wanted at minimum installation and operation costs, require the services of expert irrigation engineers. Why risk mistakes, faulty operation of your installation, excessive operating costs? You can easily determine what system is best for your course and what expenditures will be necessary, before work is begun.

Write today for the facts. No obligation.

WENDELL P. MILLER and ASSOCIATES

105 W. Monroe St., Chicago
State 4507

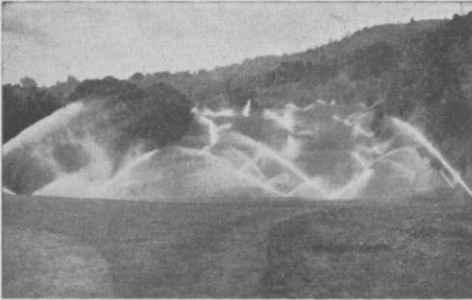
214-14 Forty-First Ave., Bayside, L. I., N. Y.
Bayside 9-8083

CONSULTING ENGINEERS — SOIL TECHNOLOGISTS

Eastern Engineering Representatives - Buckner Manufacturing Company, Fresno, California

WATER

Where You Want It
When You Need It



With the Modern
BUCKNER
One-man System

The money saved in labor alone will quickly pay for its complete installation on your course. Now, when the season is nearing an end, prepare to irrigate your fairways next summer with greater efficiency and less expense, through Buckner Sprinklers. Let us show you what users say about the Buckner system; how it has improved their fairways and cut their labor overhead. There is no other irrigation method comparable to the Buckner.

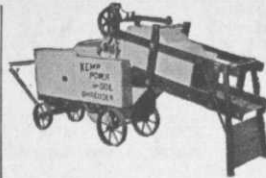
Write for catalog. No obligation.

BUCKNER
MFG. COMPANY
Fresno, Calif.

FACTORY REPRESENTATIVES

P. L. Baldock, 2240 Casitas St., Pasadena
Gordon Buckner, Athens Athletic Club, Oakland
Buckner Irrigation Co., Nixon Bldg., Chicago.

EASTERN ENGINEERING REPRESENTATIVES
Wendell P. Miller & Associates, 105 W. Monroe St.,
Chicago



**PREPARE
COMPOST**

THIS MODERN WAY

Soil is shredded and sifted in one operation.

Two models, two sizes—
complete with built-in gas
or electric motor.

HAVE better greens and fairways at less cost . . . use a KEMP Power Soil Shredder. It will save your club money, not only in first cost but in labor, fertilizer and upkeep as well.

A complete machine, the KEMP shreds and sifts in one operation. Powered either with gas engine or electric motor, or without power for operation with a tractor.

Write today for the facts and catalog.
KEMP MANUFACTURING CO., Dept. C.
2001 Peach St., Erie, Pa.

Prompt Shipment from Warehouse Stocks
in Leading Centers.

KEMP Power SOIL SHREDDERS

**Better
turf..**

**with... PREMIER
Poultry
MANURE**

**on its record
of results**

The golf field's *old reliable*—a natural
grass food and stimulant.

Write for name of your nearby dealer.

PREMIER POULTRY MANURE CO.
327 S. La Salle St. Chicago, Illinois

"Our Most Valuable Purchase of Equipment"



The McCormick-Deering Fairway Tractor owned by the City of Chattanooga, in front of the clubhouse on the municipal golf course.

THIS is what B. M. Weaver, manager and greenkeeper of the municipal golf course at Chattanooga, Tenn., thinks of the McCormick-Deering Fairway Tractor:

"The McCormick-Deering Fairway Tractor which we bought some twenty months ago has proved to be our most valuable purchase of equipment since opening our course six years ago. Previous to buying the Fairway I used a small tractor which could only handle three sections of the five-section mower. The Fairway Tractor handles the five sections and also the mower for cutting the rough. I haul all the compost for top dressing and do all other hauling with the Fairway. It has allowed me to dispense with a team of mules and one man, thereby saving the course a goodly sum of money. If it's power I need on our course I always use the Fairway.

"The only expense I have had with the Fairway has been the fuel, oil, one fan belt, and new spikes for the wheel. If that isn't service, try to find service. I must say that the Fairway Tractor is the best machine I have ever used and I would recommend it for any golf course. If at any time I can speak a good word for the Fairway, believe me I'll do it."

You can talk to greenkeepers wherever the Fairway Tractor works and you will find them as enthusiastic about the Fairway as Mr. Weaver is. Because the Fairway is a real money-saver it will be well worth your time to investigate it at the nearest of 115 Company-owned branches in the United States and Canada or at the showroom of a McCormick-Deering distributor or dealer.

INTERNATIONAL HARVESTER COMPANY

OF AMERICA

606 So. Michigan Ave.

(Incorporated)

Chicago, Illinois

**The Golf
Tractor**

**MCCORMICK-DEERING
FAIRWAY**

OCTOBER
1931

Golfdom

Vol. 5
No. 10

EDITORIAL CONTENTS

Year's Turf Troubles Make Thinkers. By Kenneth Welton.....	9
Pro's Lesson Was Sales Pressure. By George Sargent.....	13
Let Managers Manage and Help Houses. By Jack Fulton, Jr.....	15
Warns Against South Excess of Nitrogen. By O. J. Noer.....	18
Varied Memberships Cut Clubmen's Costs. By J. W. Fulton.....	21
Whip Skimpy Budgets with Machine Use. By Arthur Langton.....	24
Season of Trials Precedes Pro Triumph. By Herb Graffis.....	30
Women Attest Value of Pro Service. By Betty Burton.....	37
"Ouch!" Yell Course Owners in Crowded Field.....	40
Describes Ideal Green-Chairman. By Sherrill Sherman.....	42
Variation in Costs Illuminating. By Jay Heald and L. S. Dickinson.....	45
Tale of Two Eggs Informs Members.....	48
Basic Factors in Course Construction. By J. M. Rettig.....	53
Expert Advice Is Thrifty to Courses. By Dr. A. Mackenzie.....	56
Brutal Season Emphasizes Grass Selection. By J. F. Fouder.....	60

GOLFDOM earnestly solicits letters from all club officials, department heads and manufacturers on methods, means and policies that are successful in course and clubhouse construction, operation and maintenance and on pro merchandising of goods and services. Use GOLFDOM as the medium of exchange for ideas and as your aid in digging up facts that will promote business-like operation at your club.

We have no pets and no prejudices, but the determination to make each copy of GOLFDOM bring some specifically profitable idea to each reader.

205 W. Wacker Drive.

Chicago, Ill.

Tel.: State 3160

As Scotch as Golf

the installation and maintenance costs of Crane fountains

More than completeness distinguishes the Crane line of drinking fountains. Striking appearance, extremely low operating costs, and unusual freedom from contamination also set them apart.

Verify this. Drop into the nearest Crane Exhibit Rooms. Examine the wide selection in which Crane drinking fountains are made; note the accuracy with which each type has been designed, to meet the individual service requirements of fairways, locker rooms, rest huts, and club houses.

You will be pleased at the substantial savings made possible by the special angle stream regulator which eliminates water waste and maintains an even height drinking stream under varying pressures . . . the greater sanitation offered by Crane bubblers.

Finally with all the plumbing, heating, and piping materials made by Crane Co. these fountains share the superior engineering that makes Crane materials cost less to install, and less to operate than others.

Valves



CRANE



Fittings

CRANE CO., GENERAL OFFICES: 836 S. MICHIGAN AVENUE, CHICAGO

NEW YORK OFFICES: 23 W. 44TH STREET

Branches and Sales Offices in One Hundred and Ninety Cities



ECONOMICAL because . . . LONG LASTING

PROVES ITS CLAIMS
by PRODUCING RESULTS
. . . . for GREENKEEPERS

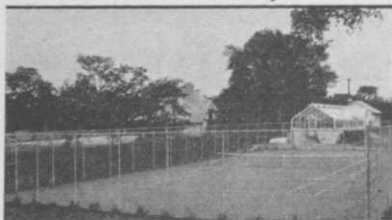
Results are proving the practical economy of using NACO for golf turf, for Greenkeepers who are using it will tell you that it takes less NACO per green, less per acre of fairway.

NACO does not produce the quick, rank growth that means a coarse bladed or tender succulent grass, for the processes of Nature seem to ration the plant food of this natural organic fertilizer to the needs of the grasses rather than let them feast for a while . . . then go hungry between meals.

Why continue to pay the high cost of cheaper fertilizers when NACO is proving to progressive Greenkeepers everywhere the practical economy of its superior results?

Sold by Golf Supply and Seed Houses and manufactured exclusively by

NITRATE AGENCIES COMPANY
104 PEARL STREET - - NEW YORK CITY



Tennis Courts

... fenced in keeping
with your other grounds



BACK stops need not be an eyesore. Wickwire Spencer Tennis Fence is as trim and clean cut as are all of their wire fences. In that both framework and netting are rust resisting, made of copper-bearing steel and hot dipped galvanized, vines can be trained over them. Without obligation on your part, we will gladly send a representative to see you and quote on material alone or on a completely erected fence. Wickwire Spencer manufactures and erects fences of all kinds that are sightly.

WICKWIRE SPENCER STEEL COMPANY

11 East 42nd Street, New York City

Buffalo Sales Office: 1 River Road; Worcester; Chicago; Cleveland; Philadelphia; Tulsa; Pacific Coast Headquarters: San Francisco; Branches and Warehouses: Los Angeles, Portland, Seattle; Export Sales Department: New York City.

Distributors and Erectors in Principal Cities



This triangular name plate appears on all genuine Wickwire Spencer Fences.

WICKWIRE SPENCER

Chain LINK fence

Without obligation on my part, please send me a free copy of your latest fence catalog.

Name

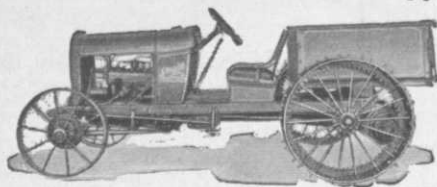
Address

City and State.....

STAUDE

UTILITY GOLF COURSE

TRACTOR



Manufactured Continuously Since 1916

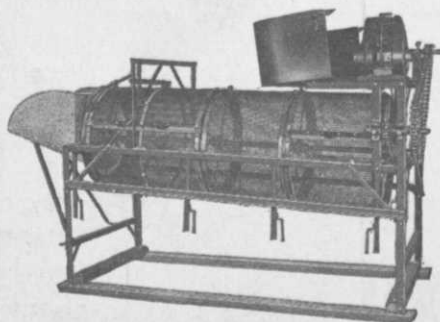
Ideal from every standpoint—power, speed, reliability, economy and ease of operation. Repair bills practically unknown. Does *all* the work of a golf course—does it *well*—and, yet, is priced as low as \$475. Used by nearly 2000 clubs. Sold on a money-back guarantee.

Buy through your local Ford dealer, golf supply house, or direct from us. Write today for details.

E. G. STAUDE MAK-A-TRACTOR CO.

2696 University Ave., St. Paul, Minn.

COMPOST-^{CONVERSE} Rotary Screens - SOIL



"Converse Screens make par greens"

FOR PREPARING SOIL OR SCREENING COMPOST—ONE TO FOUR GRADES AT ONE OPERATION.

DRIVEN BY HAND, TRACTOR OR ENGINE (illustrated).

—BULLETIN ON REQUEST—
ORDER FROM MAKER OR YOUR JOBBER

Manufactured by
F. S. CONVERSE CO., Inc.
BOX B JOHNSON CITY, N. Y.

The verdict of

31 Years . . .

Look back to the automobiles and locomotives of 1900, 1910 and 1920. Think how alloys have influenced their development. Through their use heavier loads are carried, longer runs made and greater speeds attained.

Metallurgical advancement has likewise contributed to the improvement of Toncan Culverts. In 1908 Toncan was of commercially pure iron analysis without alloys. In 1921 a small content of copper was added, this greatly improving its service life. In 1924 a copper content practically double that of any other iron or steel was added, plus an additional element,—Molybdenum! It was found that the combination of these two metals, skillfully alloyed to the pure iron, developed a composition and grain structure which gave Toncan rust resisting qualities far in excess of those possessed by any other iron or steel.

1900 and—
Open Hearth Steel

1910 and—
Pure Iron

1920 and—Copper
Bearing Pure Iron

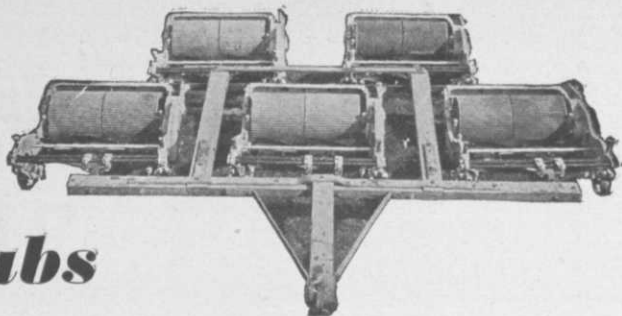
1931 and

When you buy Toncan Iron Culverts, you are taking advantage of an established trend in industry and are keeping step with modern science and progress.



TONCAN CULVERT MANUFACTURERS'
ASSOCIATION, MASSILLON, OHIO

Plants Located in All Parts
of United States and Canada



These Clubs Chose Roseman Mowers

(Read this list of a few of them)

Club	Years of Service	Club	Years of Service
Phoenix Country Club, Phoenix, Arizona.....	10	Cedar Lake Golf Club, Cedar Lake, Ind.....	7
Royal Queensland Golf Club, Brisbane, Queensland, Australia.....	8	Topeka Country Club, Topeka, Kans.....	9
Riddells Bay G. & C. Club, Hamilton, Bermuda.....	4	Louisville Country Club, Louisville, Ky.....	8
Annandale Golf Club, Pasadena, Calif.....	9	Shreveport Country Club, Shreveport, Louisiana.....	9
London Hunt & Country Club, London, Canada.....	9	United Sugar Co. of South America, Los Mochis C. C., Sinaloa, Mexico.....	5
Punta Alegre Sugar Co. Estate, Antilla, Cuba.....	7	Oakland Hills Country Club, Birmingham, Mich.....	7
Royal Automobile Club, London, England.....	9	Clarksdale Country Club, Clarksdale, Miss.....	6
Bellevue Hotel Company, Belleair, Florida.....	5	St. Joseph Country Club, St. Joseph, Mo.....	10
Hollywood Country Club, Hollywood, Fla.....	7	Meadow Lark Country Club, Great Falls, Mont.....	9
Ft. Lauderdale Country Club, Ft. Lauderdale, Fla.....	6	Baltusrol G. C., Springfield, N. J.....	6
Palm Beach C. C., Palm Beach, Fla.....	7	Fresh Meadows Country C., Flushing, L. I., N. Y.....	7
Officers' Club, Fort Benning, Georgia.....	3	Progress Golf & Country Club, Purchase, N. Y.....	5
Waialae Golf Club, Honolulu, Hawaii.....	4	Tamarack Country Club, Inc., Port Chester, N. Y.....	9
Cook County Forest Preserve, Chicago, Ill.....	6	Westchester-Biltmore C. C., Rye, N. Y.....	5
Decatur Country Club, Decatur, Ill.....	12	Wheatley Hills G. C., West Williston, L. I., N. Y.....	9
Evanston Golf Club, Evanston, Ill.....	7	Winding Hollow Country Club, Columbus, Ohio.....	8
Flossmoor Country Club, Flossmoor, Ill.....	9	North Hills Country Club, Glenside, Pa.....	3
Lincoln Park Comrs., Chicago, Ill.....	10	Richland Golf Club, Nashville, Tenn.....	7
Midlothian Country Club, Blue Island, Ill.....	7	Dallas Country Club, Dallas, Texas.....	7
Onwentsia Country Club, Lake Forest, Ill.....	10	Preston Country Club, Kingswood, W. Va.....	5
Pickwick Suburban Golf Club, Glenview, Ill.....	3	Oconomowoc Country Club, Oconomowoc, Wis.....	11
South Park Comrs., Chicago, Ill.....	10	Oshkosh Country Club, Oshkosh, Wis.....	11
Wilmette Golf Club, Wilmette, Ill.....	8		

The above list contains a few names of Roseman Owners. For your own information the Roseman Tractor Mower Company will be glad to furnish you a much larger list.

Roseman Tractor Mower Company

Evanston, Ill.

New York, N. Y.

Roseman Features:

Timken Tapered Roller Bearings on Cutter.

Hyatt British Tank Roller Bearings on Rear Axle.

Alumite Forced Feed Lubricators.

Guaranteed Non-Breakable Malleable Iron Side Frames, Gear Cover, Bed Knife Shoes and Caster Wheel Forks.

Drop Forged Machine Cut Gears.

LIGHT ROLLER DRIVE, for better Traction and turf development.

Eliminates separate Rolling, and Brings Denser Turf Growth, Healthier Root Development, Prevents Scalping, Eliminates Cuppy Lies, Seals Heat Crevices, Retains Moisture in Soil.

(Our patents give us the exclusive right to all ganging of Roller Type Mowers)

ROSEMAN MOWERS

Golfdom

The Business Journal of Golf
REG. U. S. PATENT OFFICE

VOL. 5

OCTOBER, 1931

NO. 10

Clues to Turf Miseries of 1931 Make Greensmen Deep Thinkers

By KENNETH WELTON

EVERY GREENKEEPER heaves a sigh of relief when he realizes that another summer, with all the worries that go with it, has passed. There is always more or less injury to fine turf on golf courses during the extreme summer weather and usually some particular area of the country gets more than its share of turf trouble.

This summer has probably set a record for the wide extent of putting green turf injury. It has not been uncommon to hear greenkeepers from such widely separated points as Chicago, Boston, St. Louis and Richmond describing almost identical turf injury. For many clubs it has been the worst summer in their history, as far as the maintenance of good putting turf is concerned. With the possible exception of the far west and certain portions of the northern tier of states, few clubs which maintain northern grasses on their courses have been entirely free from turf trouble.

The summer of 1928 will not soon be forgotten particularly by the greenkeepers of the East. The summer of 1928 was excessively hot and humid along the northeastern coast and the turf on many fine putting areas was badly injured or entirely lost. The 1929 summer was an average one, but 1930 brought us a summer which established heat records throughout the whole country. Strange to many is the fact that very little trouble was experienced in maintaining turf during the 1930

summer season. Records show that over the country as a whole we did not have as high temperatures this summer as last, but that there was a considerable increase in the humidity. The experience of the eastern greenkeepers during the hot, humid summer of 1928, and of the greenkeepers over a much wider area of the country during this hot, humid summer compared with the slight turf injury of the hot, dry summer of 1930 will give us a possible clue to the reason for much of this summer's turf ills.

Cooperation Improves Methods

From personal observation made throughout the stricken area and from reliable information received, it is, however, quite apparent that there were types of injury which were in all likelihood influenced by last year's drought. Also judging by information regarding cultural practices received from the greenkeepers, it is apparent that much excessive injury to putting green turf could have been avoided if more thoughtful cultural practices had been followed. It is indeed pleasing to note that many greenkeepers have been willing to cooperate for the good of the cause and for their own benefit, by disclosing an accurate account of their season's maintenance work, even though such disclosures may lay them open to criticism. With such reliable information at

WELTON SAYS:

" . . . the hot, humid summer of 1931, compared with the slight turf injury of the hot, dry summer of 1930 will give a clue to this summer's turf ills."

" . . . excessive insect injury to fine turf was largely due to last summer's drought."

" . . . brown-patch was more active than usual, but tried remedies and cultural practices in most cases kept it under control."

" . . . pythium did much damage in certain cases, but was generally the magic word to explain away otherwise incomprehensible turf injury."

" . . . poa annua can apparently withstand heat, but it cannot withstand a combination of heat and excessive humidity."

" . . . it is a mistake to try to keep greens during the summer in the luxurious fast-growing condition possible in spring and fall."

hand, it is possible to draw conclusions which may well prove constructive by indicating certain putting green maintenance methods which should be followed and others which should be discarded in order to decrease the likelihood of such severe summer injury in the future.

We are told by entomologists that the excessive insect injury on fine turf last year and this, was largely due to last summer's drought; that the adults of various potential golf course insect pests were either forced or guided by parental foresight to lay their eggs in the comparatively soft and succulent turf of the golf courses, rather than in the withered, hard turf of the pastures and waste lands. It seems that some of these insects instinctively lay their eggs in sod which will provide good foraging for the larvae, while others are influenced by personal taste, since it is exceedingly difficult, if not impossible, to force their ovipositors into hard turf. This explanation is generally accepted and in any event last year and this brought much more insect injury to turf than normally.

Sod Web Worm on Warpath

Injury from white grubs and Japanese beetle larvae was not more than usual since in areas where such injury is to be expected, the clubs had taken the necessary precautions. Last year was a bad one for cut worms on golf course turf, and greenkeepers who had experience with these pests last year had little trouble controlling them this summer. However, the sod-web-worm, which did considerable damage in some sections last year, continued its depredations and extended its activities to other areas.

In many cases injury laid to turf diseases, drying out, or to cut worms, was in reality due to the activities of the sod-web-worm. The ordinary poison soil treatments usually used for pests which work in the soil, failed to control the web-worm, which does its damage on the surface, and hence requires a different method of applying the insecticide. The *Bulletin* of the U. S. G. A. Green Section refers to sod-web-worm injury on putting greens as early as 1923, but it has only been in recent years that the web-worm has become of sufficient importance on golf courses to require special attention to control methods.

Brown-patch is an old summer complaint and was usually recognized. However, the number of greenkeepers who forsook the standard remedies and jumped at new panaceas was surprising. Brown-patch was more active than usual due to the heat and abnormally high humidity, but those who kept their heads and applied the tried remedies and cultural practices with determination and increased care, were in most cases able to keep it under control. There were some who, becoming panicky at the virulence and persistence of the disease, forsook the tested remedies and tried everything good or bad with disastrous results.

Blame Pythium Loosely

Pythium, a disease named after the fungus organism which causes it, did much damage in certain cases, but as with the insects, this disease was also much overplayed, since, when all other diagnoses failed, it proved to be a magic word with which to explain away the incomprehensible turf damage. Pythium did considerable damage in the summer of 1928, but in 1929 and 1930 did little damage. This year it came back strong. The summers of 1928 and 1931 had much in common, for