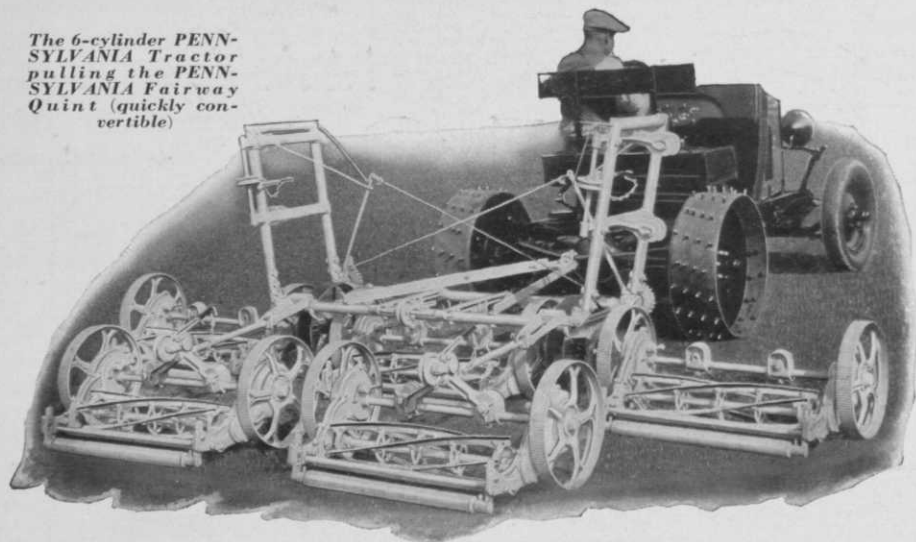


The 6-cylinder PENNSYLVANIA Tractor pulling the PENNSYLVANIA Fairway Quint (quickly convertible)



Making Good at Oyster Bay

"Just a year ago," writes Mr. Charles G. Wilkinson, Superintendent of Roosevelt Memorial Park, Oyster Bay, N. Y., "I ordered one of your tractors after looking at a number of others. To date the only expense has been for two spark plugs, though the tractor has been in constant use for all kinds of work—hauling, discing, plowing, etc., and it has never failed us!"

In the 1931 model of the PENNSYLVANIA Tractor, still further operating economy is made possible by improvements in the radiator circulation system, heavy rear axle springs and an improved dump body.

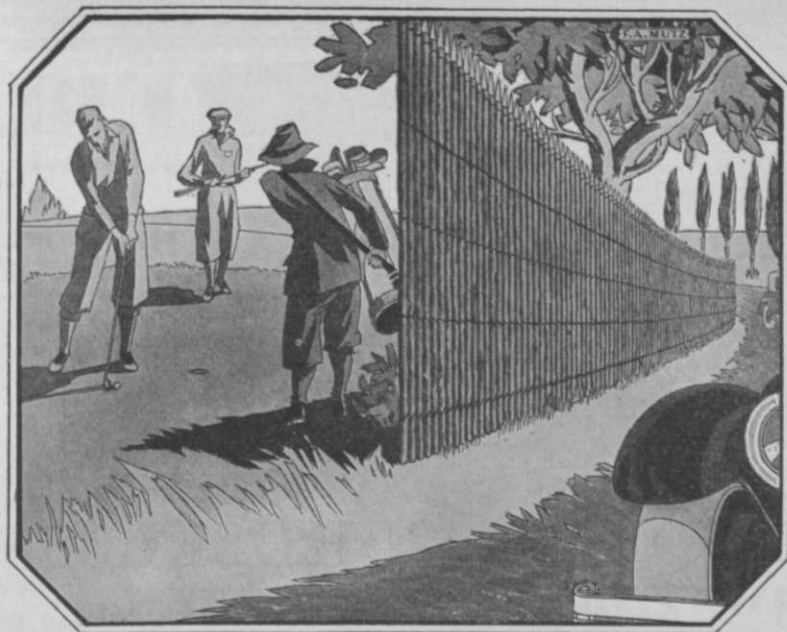
For economy and efficiency in fairway mowing, use PENNSYLVANIA Tractor and PENNSYLVANIA Quint.

Write for new GOLF CATALOG, picturing and describing the tractor and the complete line of PENNSYLVANIA mowers for fairways, greens, tees and general trimming.

PENNSYLVANIA LAWN MOWER WORKS

PRIMOS, DELAWARE COUNTY, PA.

PENNSYLVANIA
Quality
LAWN MOWERS



Solving Club Problems with DUBOIS

No. 3—
Screening
Greens & Tees
from Outsiders

GREENS OR TEES, BORDERING A PUBLIC HIGHWAY NEED THIS PROTECTION

Are players on your course (as on so many others) bothered by the many distractions from motor traffic and loiterers when playing on greens or tees adjacent to a public highway?

Erect Dubois Woven Wood Fence as the ideal remedy to get rid of this nuisance. The pickets in Dubois are woven closely together affording absolute seclusion. Besides, with its quaint rustic

charm, Dubois adds greatly to the beauty of the course.

Dubois lends itself to a multitude of other uses, being made in heights from 18 inches to 10 feet.

It may be used to separate dangerously close portions of adjoining fairways, to make a caddie enclosure, to conceal tool houses and service entrances and to beautify the clubhouse grounds generally.

DUBOIS

Reg. U. S. Pat. Off

THE ORIGINAL

Woven Wood Fence

Made in France

DUBOIS FENCE & GARDEN CO., Inc., 101 Park Avenue, New York, N.Y

MAIL THIS COUPON

for complete DUBOIS information and name of nearby Distributor, qualified to give advice on the many ways that Dubois can serve you.

DUBOIS FENCE & GARDEN CO., Inc.		
101 Park Ave.		
New York, N. Y.		
Name		
Address		
Position		
Club	15-E	



View of the Valley Club, Santa Barbara, California, James Birrell, Greenkeeper, showing the Miller System in operation. Note the even distribution of water. Photos by Collinge, Santa Barbara.

Why Are These Clubs Equipped With MILLER ONE-MAN HOSELESS FAIRWAY IRRIGATION SYSTEMS

HERE are representative clubs which have already installed the MILLER One-Man Hoseless Fairway Irrigation Systems—Albany Country Club, Queens Valley Golf Club, Women's National Golf and Tennis Club, Bayside Links, all of New York; Oak Park Country Club, Chicago.

Why? For three important reasons.

Three Important Reasons

First, because irrigated fairways add tremendously to the enjoyment of golf. They are beautiful, easy for walking, and give perfect lies.

Second, the MILLER One-Man Hoseless Irrigation System costs no more to install than dependable hose

construction and it has the lowest operating cost of all systems.

Third, MILLER One-Man Hoseless Irrigation Systems, are installed by irrigation engineers who have had long and exceptional experience and whose ability guarantees perfect operation.



Valley Club—Note curtain striking turf

Get These Facts About Fairway Irrigation

Let us send you our Special 10-Page Report covering the fundamental points of scientific fairway irrigation. It will give you not only valuable general information, but provide you also with a definite working knowledge of the real problems involved. It has saved many clubs from making costly mistakes.

Full information and approximate installation costs without obligation. Address

WENDELL P. MILLER and ASSOCIATES

105 W. Monroe St.
Chicago
State 4507

277 West End Ave.
New York
Susquehanna 7-3353

J. Alberdi 699, Olivos F. C. C. A.
Buenos Aires

CONSULTING ENGINEERS — SOIL TECHNOLOGISTS

Eastern Engineering Representatives . . . Buckner Manufacturing Company, Fresno, California

BUCKNER Sprinklers

Used on more than 80% of the Golf Courses in California and in rapidly increasing numbers East of the Rockies

BUCKNER equipment is demanded more and more by golf clubs for both greens and fairways, because this equipment alone gives these advantages:

- 1 Definitely superior performance—*with maximum efficiency and economy.*
- 2 Positive slow speed control—*insures even distribution of water.*
- 3 Satisfactory service over a long period of years—*no gears, no delicate parts.*
- 4 Greater areas covered—*minimum of outlets necessary.*
- 5 There are Buckner Sprinklers for every condition of golf course water supply and pressure.
- 6 Highest endorsement from users. The Buckner record is unapproached by any other equipment.

* * *

Note the illustrations on this page. Properly irrigated fairways are necessary to good golf. Buckner sprinklers positively insure proper irrigation.

Buckner Equipment is sold by responsible dealers everywhere.

Write today for catalog and full information. No obligation.



Valley Club, Santa Barbara, California. Outlets are 100 feet apart. Buckner sprinklers cover evenly every square foot of fairway surface.



Valley Club, Santa Barbara, California, showing Buckner Sprinkler in operation.



Castlewood Country Club, Pleasanton, California, showing the most modern irrigation system in the world—fairways, greens, tees, lawn area.

Buckner Manufacturing Co., Fresno, California

FACTORY REPRESENTATIVES: P. L. Baldock 631 Crosby St., Pasadena. Gordon Buckner, Piedmont Hotel, Oakland. Buckner Irrigation Co., Nixon Bldg., Chicago.

EASTERN ENGINEERING REPRESENTATIVES: Wendell P. Miller & Associates, 105 West Monroe Street, Chicago. 277 West End Ave., New York City.

Give the golfers



...a break

A GOLF BALL should not be lost at least until it stops rolling....but it usually is if the course is unfenced and adjoins residence property or a highway. There is no greater aid to golfers and greenskeepers than a sturdy Wickwire Spencer Chain Link Fence around the entire grounds. With only the players and authorized gallery on the links, play is better and grounds are more easily kept in shape. We will gladly send a representative to see you who knows about fencing golf courses.

WICKWIRE SPENCER STEEL COMPANY
11 East 42nd Street, New York City

Buffalo Sales Office: 1 River Road; Worcester; Chicago; Cleveland; Philadelphia; Tulsa; Pacific Coast Headquarters: San Francisco; Branches and Warehouses: Los Angeles, Portland, Seattle.

Distributors and Erectors in Principal Cities



This triangular name plate appears on all genuine Wickwire Spencer Fences.

WICKWIRE SPENCER
Chain Link fence

Without obligation on my part, please send me a free copy of your latest fence catalog.

Name

Address

City and State.....

A REMEDY for thin, undeveloped fairways

THIN and weedy fairways are usually too poor to grow good turf. They can be made fertile again with Armour's Special Turf Fertilizer.

When fed systematically with Armour's Special Turf Fertilizer a deeper, more vigorous root system is developed. A thicker turf results, covering the thin places. Properly fertilized fairways and greens are better able to stand the hard use and abuse of a long playing season.

Well-developed turf on fairways and greens means satisfied golfers—more play—greater revenue.

Write for the booklet, "Solving The Turf Problem." It will tell you how to improve your course through a systematic feeding program.

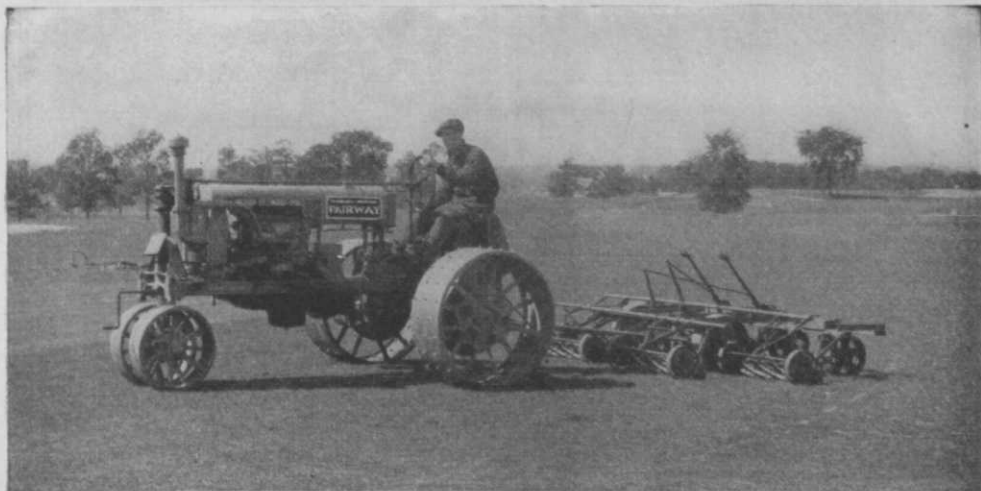
Twenty-one conveniently located plants insure prompt delivery.

ARMOUR
[FERTILIZER WORKS

General Offices

111 West Jackson Blvd., Chicago, U. S. A.





Let the FAIRWAY Trim Your Budget As Well As Your Course

YOU can effect important savings in maintenance this year and for many years to come with the McCormick-Deering FAIRWAY Tractor. This efficient power plant pays for itself quickly by reducing manual labor costs to a minimum. Only one man is needed to operate the FAIRWAY when mowing the fairway and cutting the rough. With a gang mower he can cut from 75 to 100 acres a day, and with the 7-foot built-in power mower the rough is cut quickly and easily.

The FAIRWAY does a great amount of work and is an economical tractor to operate. Its fuel consumption is low. Its rugged construction, ball and roller bearings, and electric heat-treatment of wearing parts reduce wear and upkeep to a minimum. Ball and roller bearings

at 32 points mean increased power per unit of fuel consumed. Every part is designed and built to give years of work.

The compactness of the FAIRWAY permits cutting close to, and in between, trees and other obstructions. A square corner can be turned without backing or circling, thus cutting all areas in the shortest time. The flexibility of the FAIRWAY enables it to work anywhere on any job. It has power to handle construction work as well as maintenance, and its power is available for any belt work.

If you really want to reduce your budget, the FAIRWAY is the mechanical unit that will do it for you. Ask the nearest of 117 Company-owned branches in the United States and Canada for a demonstration. Write us for catalog.

INTERNATIONAL HARVESTER COMPANY
OF AMERICA

606 So. Michigan Ave. (Incorporated)

Chicago, Illinois

**The Golf
Tractor**

**MCCORMICK-DEERING
FAIRWAY**

Golfdom

Vol. 5

MAY, 1931

No. 5

EDITORIAL CONTENTS

What Big Business Says About Club Operation. By A. E. Swanson.....	21
Enduring Design Good Architecture's Hallmark. By Dr. A. MacKenzie.....	25
Staff Education, California's Major Greens Job. By Arthur Langton.....	29
P. G. A. Sets June 23-24 for Business Conference. By Herb Graffis.....	32
Pacific P. G. A. Polices Pro Business.....	37
Mercury and Lead Arsenate Effect on Soil. By Prof. J. W. White.....	38
Chicago Managers Hosts to Club Officials. By Jack Fulton, Jr.....	41
Foresight Demanded by Public Clubhouse Design. By M. Fillmore Harty.....	44
Willie Hunter Makes Fee Course a Gold Mine. By D. Scott Chisholm.....	46
Pro Makes Good As Smaller Club General Manager. By Ray Hall.....	61
Kid Auditor Shows Pro Bookkeeping Wisdom. By Dan Goss.....	66
Kenwood Nicely Divides Golf and Real Estate Themes. By G. B. Arthur.....	72
Department Heads the Matched Set in Management. By Alex Pirie.....	80
Birds, Greenkeeping Aids, Deserve Protection.....	86
Shop Policies That Pay Me. By James Wilson.....	90
Pro Value Emphasized by Membership Situation.....	92
Southern Course Building Requires Right Man Early. By Ralph Hall.....	98
Sales Value of Title for Greens' Boss Is Debated. By B. R. Leach and John MacGregor.....	104
What Years Have Taught Me About Maintenance. By Joe Williamson.....	112
Responsibilities Club Management Involves. By Bernard O'Grady.....	122
Check Up Your Menu with Other Club Figures.....	126
Side-line and Watchfulness, Gund's Feeding Features.....	130
Tournament Chief Sees Big International Prizes. By Herb Graffis.....	134
Wallpaper Low Price Medium for House Decorating. By A. L. Fillebrown.....	138

Golf has become the national game because astute and alert golf club department heads and officials have pushed the business progress of the game.

What have you done at your club that represents an improvement over the usual methods? We want to have the opportunity of telling about your work to others who are anxious to learn and profit. Will you co-operate with us for the good of the game by writing us about progress in greenkeeping, house operation, pro shop service and club policies, as in evidence in the activities at your own club?

In June GOLFDOM you will read of the work of many competent men who are successful in putting golf club operation on the basis of good business.

P. S.—This is the biggest May issue we ever had. Business is great in the golf field. The year is certain to be the biggest in golf history.

GOLFDOM earnestly solicits letters from all club officials, department heads and manufacturers on methods, means and policies that are successful in course and clubhouse construction, operation and maintenance and on pro merchandising of goods and services.

Use GOLFDOM as the medium of exchange for ideas and as your aid in digging up facts that will promote business-like operation at your club.

We have no pets and no prejudices, but the determination to make each copy of GOLFDOM bring some specifically profitable idea to each reader.

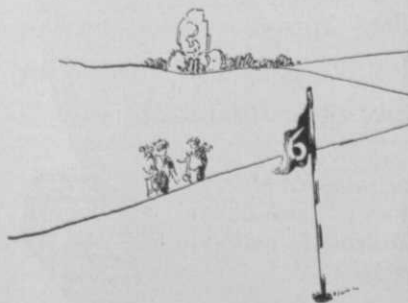
205 W. Wacker Drive.

Chicago, Ill.

Tel.: State 3160

Kill the

**GRUBS
BEETLES
WORMS**



Advertisement for Dow Lead Arsenate, a pest control product for golf courses. The text is partially obscured by a large black box containing the words 'GRUBS BEETLES WORMS'.

Protect greens this inexpensive way

SOLVE that grub and earthworm problem of yours with Dow Lead Arsenate, the Lead Arsenate with the high arsenic content that proves so effective. Kill the grubs and worms! And at the same time discourage the growth of chickweed, crab grass, fennel and other obnoxious weeds commonly found in fine turf. Keep your greens and fairways fit for tournament play

all the time. Smooth, velvety turf makes boosters for your club and for you.

Dow Lead Arsenate is a light, finely divided, fluffy material that is especially adapted for treatment of greens and fairways. Use it—put an end to loose turf, worm casts and rough, weedy spots. Place your order now—write for complete information and prices today.

THE DOW CHEMICAL COMPANY, Midland, Michigan

DOW



Lead Arsenate

DRICONURE
Manufactured by Green Island Peat Moss
 TRADE MARK

QUICK ACTING LONG LASTING

No other fertilizer combines the dual feeding ability of DRICONURE. Its rich urine salts are readily soluble—the manure solids and peat moss give long term food value and humus—and, in addition, build up the soil reserve.

Double—or triple—the value found in most fertilizers—yet it costs no more. Investigate Driconure for vigorous and healthy, yet economical turf maintenance.

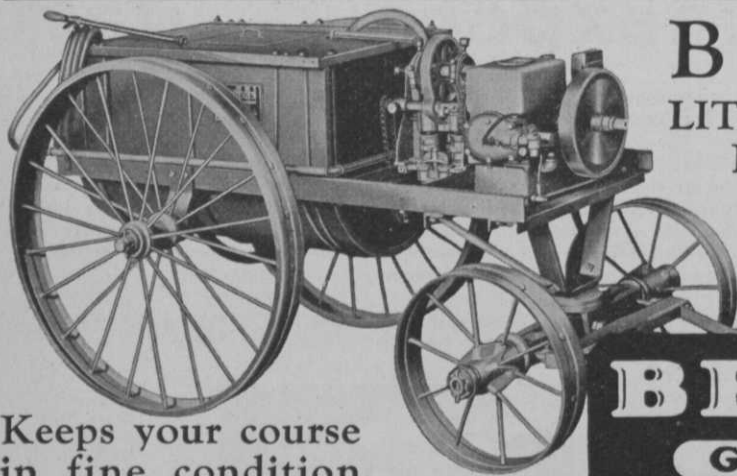
PRICES AND LITERATURE ON REQUEST

ATKINS & DURBROW, Inc. BURLING SLIP Near Front St. **New York, N. Y.**

PEAT MOSS
THE G P M

The most satisfactory source of humus. Contributes more humus over a longer period of time than any other material.

But only GPM Peat Moss guarantees consistently uniform analysis.



BEAN LITTLE GIANT DUPLEX

A high-grade, low-cost, two-cylinder Sprayer

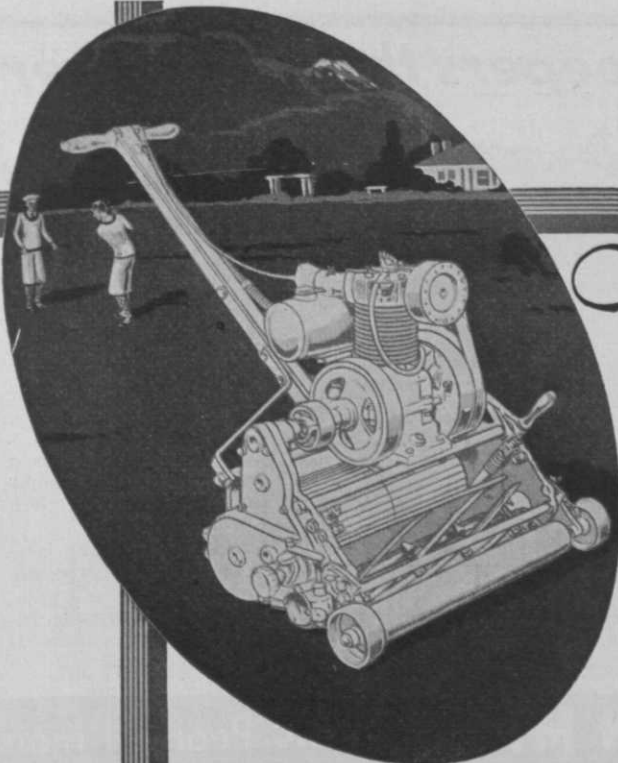
Keeps your course in fine condition.

Small in size, light in weight, easy to handle, with a capacity of 6 gallons a minute at 300 lbs. pressure, the BEAN Little Giant Duplex is an ideal golf course sprayer. Built for long life, freedom from trouble, and low-cost operation, not affected by any kind of spray or fertilizer.

JOHN BEAN MFG. CO. (Division of Food Machinery Corporation)
 70 Hosmer, Lansing, Mich. 170 W. Julian, San Jose, Calif.

**BEAN
GOLF
SPRAYERS**

Talk with your jobber or write direct to us for full information on the BEAN Golf Sprayer.



The
**Jacobsen
 POWER
 PUTTING
 GREEN
 MOWER**

For FASTER CLOSER Cutting

This mower embodies the greatest engineering refinements money and skill can produce. From pioneer to the day's outstanding leader, the Jacobsen today cuts the greens on hundreds of golf courses.

The PERFECT Putting Green

is the work of only a few minutes with a Jacobsen. A finer cut is given by its high-speed reel made in 19 and 24-inch widths. Auto-type differential assures easy handling of mower; independent control of traction and cutting units; enclosed gear drive; specially built, powerful motor; aluminum construction of major castings, are a few Jacobsen developments for greater speed and better results in cutting modern greens. The Jacobsen greens brush and power transport cart are valuable extra equipment for better greens maintenance and transportation of mower.

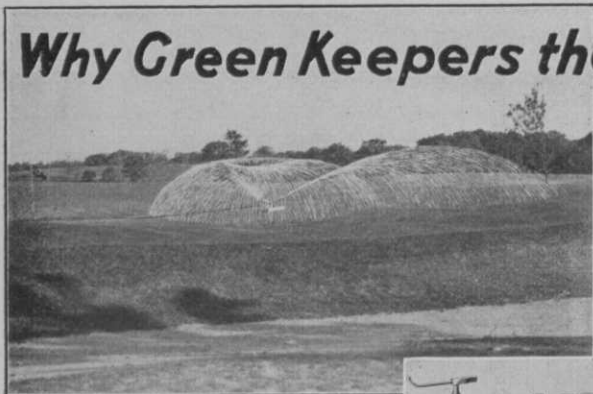
FREE Demonstration Take nothing for granted. Let us show you on your own course. You name the date. We will show you WHY the Jacobsen can save maintenance costs; HOW it makes the perfect putting green in HALF the time. Sales and Service everywhere. Write

THE JACOBSEN MFG. CO.
 734 Washington Ave., Racine, Wisconsin

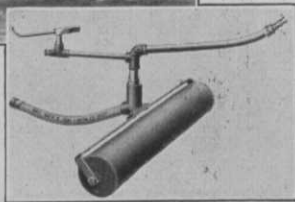
**Mail
 This
 Coupon**

JACOBSEN MFG. CO., 734 Washington Ave., Racine, Wisconsin.
 I am interested in:
 Jacobsen Putting Green Mower Club House Mower
 Tee and Approach Mower Free demonstration particulars
 Name
 Address
 City..... State.....

Why Green Keepers the World Over Prefer the LARK SPRINKLER



The above illustration shows the Lark in action. Note the wide area covered and the drenching spray that's "better than rain." The picture at the right is a close-up. Small arm whirls rapidly as entire sprinkler revolves. Made entirely of high grade bronze mounted on iron roller. Large arm has adjustable nozzle.



Price \$15 in the U. S. (Slightly higher in Canada and abroad.) Send at once for a trial sprinkler. You, too, will be delighted with the Lark!

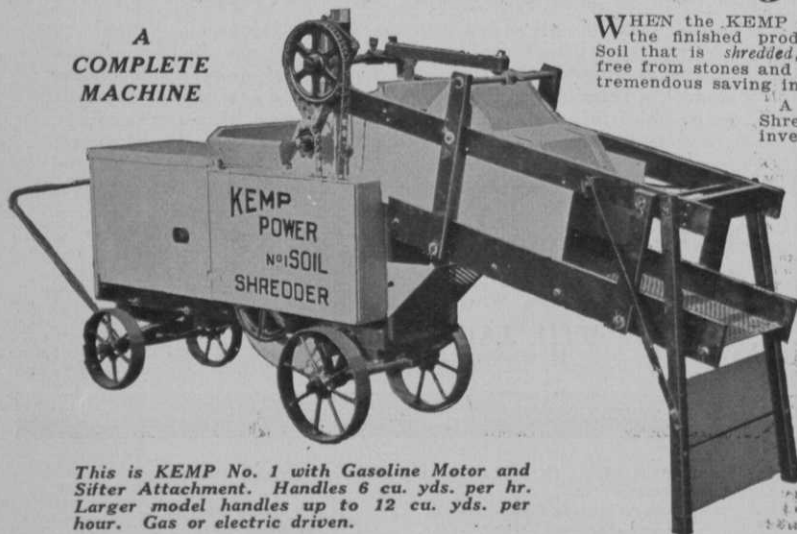
GREENKEEPERS in the British Isles, Australia, Canada, and in every State in the Union use and recommend the Lark because—

1. It covers an area up to 150 feet in diameter.
2. Spreads water evenly at all pressures.
3. Gives the grass a thorough drenching. "Better than rain."
4. Made of long-lasting, non-corroding brass.
5. A scientifically designed sprinkler at low cost.

L.R. NELSON MFG. CO. INC. Peoria, Illinois

Have Finer Greens and Fairways ... At a Real Saving

A
COMPLETE
MACHINE



This is KEMP No. 1 with Gasoline Motor and Sifter Attachment. Handles 6 cu. yds. per hr. Larger model handles up to 12 cu. yds. per hour. Gas or electric driven.

WHEN the KEMP makes compost, it's the finished product ready for use. Soil that is *shredded*, not ground up... free from stones and lumps... and at a tremendous saving in time and labor.

A KEMP Power Soil Shredder is a profitable investment. Each machine is a complete, self-contained unit... powered with gas or electric motor... easily moved about... good for many years of dependable service.

WRITE TODAY

for illustrated catalog and testimonials from leading golf clubs throughout the country to prove its value. Address KEMP MANUFACTURING CO., Dept. "C," 2001 Peach St., Erie, Pa.

Prompt Shipment from Warehouse Stocks in Leading Centers.

KEMP POWER SOIL SHREDDERS