



How McWANE PIPE Saves Fittings

Pipe-Fittings are a big cost in golf course irrigation systems. ONLY McWANE can so cast larger pipe as to avoid many large, costly fittings.

ONLY McWANE makes ALL needed golf sizes in the enduring cast iron pipe. Address:

McWane Cast Iron Pipe Company

Birmingham, New York, Chicago,
Kansas City, San Francisco, etc.

*Ask for names of courses near you using
McWANE pipe*

*Should greens
be bottle-fed?*

WELL, at least they certainly need exactly the right food-formula—just as bottle-fed babies do. That is just what golf greens and fairways find in V-C Fairway, the scientifically blended chemical food for grass. V-C Fairway is finding fast-increasing favor with golf architects and greenkeepers throughout the country. It makes turf grow greener, tougher and more deep-rooted. It solves many of the greenkeeper's problems of convenience, economy and efficiency. V-C Fairway is the result of over two generations of the making of plant foods—more than two generations of plant food experience is at your service. Write for information.

Lawn and Garden Dept.

**VIRGINIA-CAROLINA
CHEMICAL CORP.**

Richmond, Va.

SALE!

**ACCOMMODATIONS
FOR TWO IN A
DOUBLE BEDDED
ROOM at the USUAL
SINGLE RATE!**

**\$3.00 to \$5.00
daily**

HOTEL

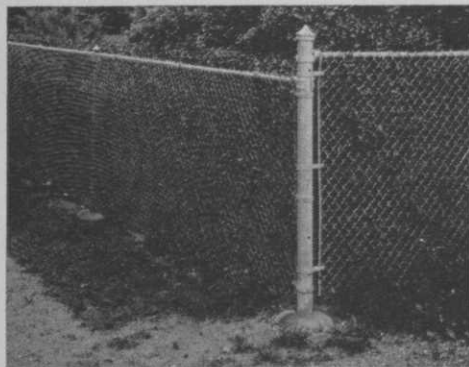
PICCADILLY

45th ST. WEST OF B'WAY.

New York

**V-C
Fairway
GRASS FOOD**

Recommended and used by Jack Daray



A Golf Club Fence must be attractive

Fence for in front of the club house must be attractive. The perfect mesh shape of Wickwire Spencer Chain Link Fence, the chaste designs of Copper Bearing finials and fittings and the neat workmanlike manner in which our skilled erectors set fencing and gates all result in utility fencing that does enhance property. Without obligation on your part, we will gladly send an experienced representative to see you. He will suggest types and height of fence and make estimates of costs.

WICKWIRE SPENCER STEEL COMPANY
11 East 42nd Street, New York City

Buffalo Sales Office: 1 River Road; Worcester; Chicago; Cleveland; Philadelphia; Tulsa; Pacific Coast Headquarters: San Francisco; Branches and Warehouses: Los Angeles, Portland, Seattle.

Distributors and Erectors in Principal Cities



This triangular name plate appears on all genuine Wickwire Spencer Fences.

WICKWIRE SPENCER
Chain Link fence

Without obligation on my part, please send me a free copy of your latest fence catalog.

Name

Address

City and State



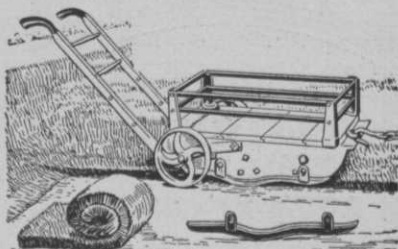
But **ONE** Pile of **MANY!**
350 Tons of
HYPER-HUMUS



being used in greens. This photo taken in May on a 107-acre golf development on Long Island, New York. Write for details and literature.

HYPER-HUMUS COMPANY
51 Park Place Newton, New Jersey

THE RICHMOND SOD CUTTER



A PROFITABLE time and labor saver that gives a neater job of sodding. Cuts a strip 14 inches wide; adjustable, uniform thickness; any length desired. Makes a smoother, firmer turf especially on embankments. Made for either horse power or tractor.

The Richmond Sod Cutter truly pays for itself in a day—Write us today for details—Complete, ready for use \$35 F.O.B. Richmond.

RICHMOND SOD CUTTER CO.
Richmond, Indiana

"You've Got to Do It for Less"

When the green-chairman tells you that about your budget this year remember:

CALO-CLOR

controls brown-patch for one-third to one-quarter of the average cost.

Full Information on Request

MALLINCKRODT CHEMICAL WORKS

2nd & Mallinckrodt Streets,
St. Louis, Missouri



"SOD-KUT" Pat. Pend.

a hand-power sod-cutter

Produces sod of absolutely uniform thickness and square, even edges, insuring solid, tight butting, with consequent quick knitting and firm, smooth relays. Cuts a strip 13½ in. wide, any length, any depth. No horses or tractors. Two men easily cut 15,000 feet of sod a day. Weighs less than 100 lbs. and uses no weights. Invaluable for removing infections in greens, remodeling of tees and installing sprinkling systems. Can be rolled about with absolutely no injury to greens. Meets the exacting requirements of greenkeepers for a simple, trouble-proof, convenient and ACCURATE tool. Write for full information. Some territory still open and available for golf club supply houses.

Pacific Greenkeepers' Appliance Co.
28 North Ninth St., Portland, Oregon



You Can't Afford Expensive Maintenance

Absence of complicated parts assures profitable service from the Universal —year after year. Which is no less important than the extra fine compost it mixes at an 80% saving in time, and a 50% to 90% saving in labor. Why not decide now to *permanently* solve your compost mixing problem? Fill out and mail the coupon for our latest catalog—just off the press.

UNIVERSAL COMPOST MIXER

The Universal Sand Equipment Co., 1833 Columbus Road, Cleveland, O.
Dealers in Principal Cities

Send your new catalog on the Universal Compost Mixer.

NAME POSITION

CLUB

ADDRESS

Seaside CREEPING BENT

The grass of all grasses for
putting greens

Ask your local dealer, or nearest distributor
listed below, about special prices for fall
shipment

—DISTRIBUTORS—

THE J. M. McCULLOUGH'S
SONS COMPANY

316 Walnut St., Cincinnati, O.

THE NORTHWEST SEED
COMPANY

1103 Post St., Seattle, Wash.

THE WESTERN SEED
MARKETING CO.

P. O. Box 1147, Salt Lake City, Utah

SEASIDE BENT COMPANY
Seattle, Wash.

Better turf...

with . . **PREMIER**
Poultry
MANURE

— on its record
of results —

The golf field's old reliable—a natural
grass food and stimulant.

Write for name of your nearby dealer.

PREMIER POULTRY MANURE CO.
327 S. La Salle St. Chicago, Illinois

A RELIABLE GOLF COURSE SUPPLY HOUSE for Grass Seed of Guaranteed Quality

Brown Patch Remedies, Hose, Sprinklers,
Equipment, etc. "Everything for the Golf
Course."

WIRE OR PHONE US YOUR ORDER
COLLECT

For Nu-Green, Barbak 211, Semesan, Caloclor,
etc., and obtain immediate delivery.

BE PREPARED FOR THE DRY SPELLS

Get our prices and descriptive data on Sprink-
lers and Hose—it will pay you.

AGENTS for WORTHINGTON MOWERS

Send for 1931 Catalog.

ARTHUR D. PETERSON
INCORPORATED

11 E. 44th St. (Tel. Murray Hill 2-3070) New York City

HAROLD J. ENGLISH, Manager

ALLERTON HOUSE

701 N. Michigan Ave., Chicago
Philip E. Cobden, Manager

Official Chicago Residence 102 Colleges

1000 Rooms

No Surrounding
Buildings

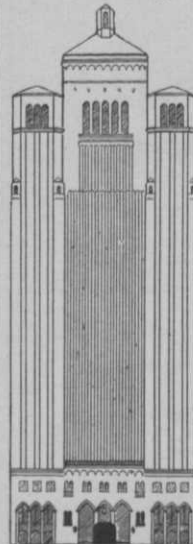
R. C. A. Radio Speak-
er in every room at no
extra cost. World's
greatest receiving in-
stallation.

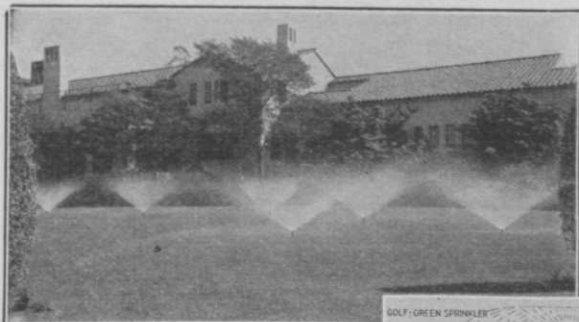
An Outstanding Res-
idence of Executives.
Route Your Staff to
the ALLERTON.

14 floors exclusively
for Men.

7 floors exclusively
for Women.

\$ 2.00 to \$ 3.50 Daily
\$10.50 to \$17.50 Single
\$ 8.50 to \$12.50 Double

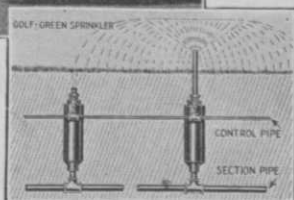




A GOLF GREEN SYSTEM

**HADDEN
SYSTEMS**

"Waters the Lawn before the Dawn"



CROSS SECTION DETAIL

**ANOTHER HADDEN
ACHIEVEMENT**

**THE GOLF-GREEN
SPRINKLER**

Especially adapted for use on
Golf Greens.

May be operated either man-
ually or automatically.

**OUT OF USE OUT
OF SIGHT**

As shown in the sectional
illustration, when not in use,
the sprinkler nozzle is below
the surface of the ground,
thereby causing no obstruc-
tion whatsoever.

For Further Information Write to

**Hadden Automatic Sprinkler
Company**
Alhambra, California

WORM CASTS

on Putting Greens are an
unnecessary nuisance. One
application of

**ELECTRIC
WORM
ERADICATOR**

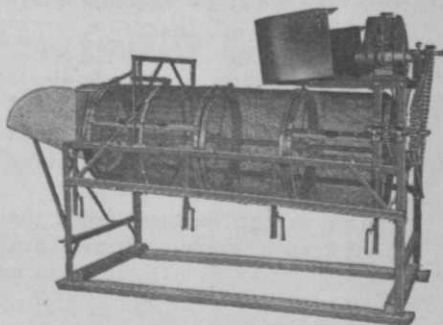
quickly gets rid of the worms
without any danger of injur-
ing the turf or poisoning the
soil. The old reliable for
over forty years.

Write for full information

READE MFG. CO.

165 Hoboken Ave.
JERSEY CITY, N. J.

COMPOST-^{CONVERSE}**Rotary Screens**-SOIL



"Converse Screens make par greens"

FOR PREPARING SOIL OR SCREENING
COMPOST—ONE TO FOUR GRADES AT
ONE OPERATION.

DRIVEN BY HAND, TRACTOR OR
ENGINE (illustrated).

—BULLETIN ON REQUEST—
ORDER FROM MAKER OR YOUR JOBBER

Manufactured by
F. S. CONVERSE CO., Inc.
BOX B JOHNSON CITY, N. Y.

At Last!!

A complete manual of greenkeeping . . .

GOLF COURSE COMMONSENSE

By G. A. FARLEY

The golf field has waited long for this valuable and practical guide to good greenkeeping. It presents, for the first time, full details of the methods of the country's foremost greenkeepers in simple, usable form. "Golf Course Commonsense" tells you what the most successful greenkeepers and the leading turf scientists do to put and maintain courses in the top-notch condition demanded by exacting players and club officials.

Each chapter of the book is rich in working instructions based on a careful study of the methods employed by leaders in the course

construction and maintenance field.

PARTIAL TABLE OF CONTENTS

Soils, Fertilization and Growth.
Grasses. Fairways. Hazards.
Weeds and Diseases.
Equipment and Supplies.
Greenkeeping in the South.
Golf Course Trees.
Drainage and Water Systems.
Tees. Putting Greens.
Topdressings and Turf Repair.
Birds, Animals and Insects.
Keeping Course Records.
Concrete Construction.
Growing Choice Flowers.
The Golf Course in Community
Welfare.

This is the business book that is essential to the library of every greenkeeper, green-chairman, professional, supply man and manager interested in course maintenance.

The price, postpaid,

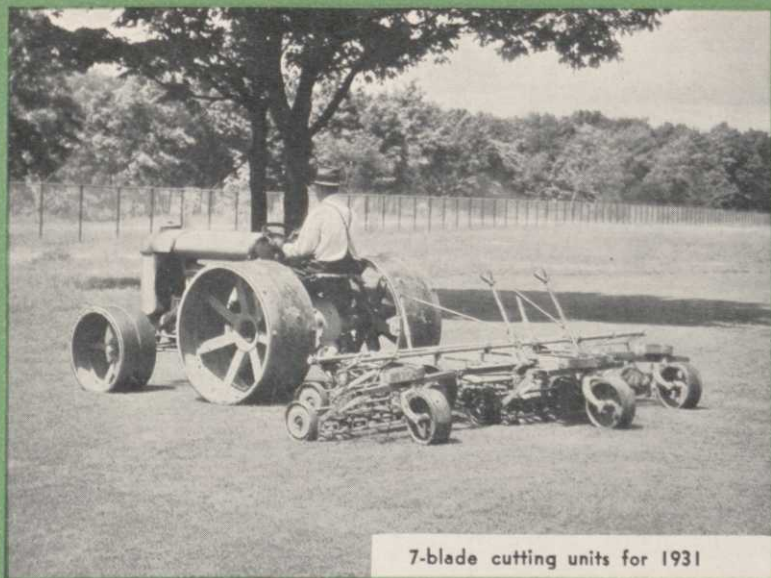
\$4.00

GOLFDOM, The Business Journal of Golf

BOOK DEPARTMENT

205 W. Wacker Drive

CHICAGO



7-blade cutting units for 1931

The REASON WHY Low Wheels Mean SMOOTHER FAIRWAYS

Low wheels mean a short side frame for the cutting unit. That allows the cutting knives to go right to the bottom of every hollow on the fairway. That short frame holds the cutting knives in such a position that they cannot scalp the tops off ridges. In addition, the low-wheeled Ideal cutting units are pushed forward on hinged arms that allow them to follow every undulation of the ground. They **cannot** leave uncut patches on the fairway, because they **cannot** bounce and sway from side to side as less efficiently-designed gang mowers will do. And the new 7-blade cutting units insure smooth fairways—even with Bent grass.

IDEAL POWER LAWN MOWER COMPANY
446 Kalamazoo St., Lansing, Mich.
FACTORY BRANCHES

413 W. Chicago Avenue,
Chicago, Ill.

237 Lafayette Street,
New York City

161 Vester St., Ferndale
(Detroit) Mich.

273 Boylston Street,
Brookline, Mass.

Dealers in all principal cities

IDEAL

GOLF COURSE EQUIPMENT

NEW IDEAL ROUGH MOWER



New Ideal Rough Mower with Ideal Mowing Equipment at Indianwood Club, Orion, Mich.

New Ideal Rough Mower Saves Over \$400.00 in One Season

INDIANWOOD CLUB
Lake Orion, Michigan,
January 14th, 1931

Ideal Power Lawn Mower Company, Lansing, Michigan.
Gentlemen:

At this time we are getting our equipment ready for the coming season and checking our budget to see wherein we may effect any savings in our golf course maintenance.

We find that we have one piece of equipment which helps considerably in the cost of cutting our rough and that is the 3-gang rough mower which we purchased from you last spring. We have been able to keep our rough in fine condition all over the course due to the fact that we can put this mower over hills and swamp areas that horse-drawn equipment has been unable to do.

We are highly pleased with the performance of this mower and wish to commend you very highly in being able to place such a machine on the market.

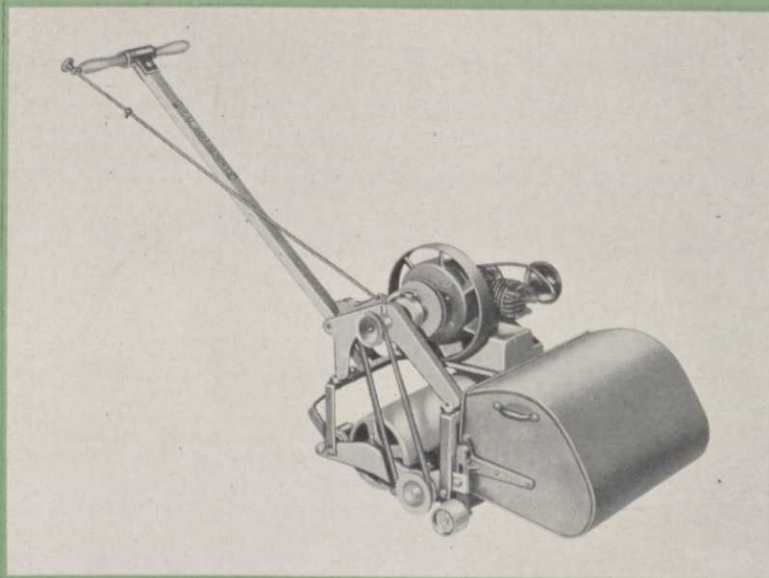
You may be interested to know that thru the use of this machine it saved us well over \$400.00 last season and the best part of it is, we have never spent a cent for repairs and the mower is in perfect condition for the coming season.

Trusting you will be as pleased to receive this information as we are to give it, we are

Yours very truly,
Richard H. Osborn
Gen Mgr.
Indianwood Club.

IDEAL

GOLF COURSE EQUIPMENT



BUILT TO GREENKEEPER'S SPECIFICATIONS OF THE "PERFECT POWER GREENSMOWER"

It is light in weight. Power flows smoothly to operate the seven-blade cutting reel at a higher speed, giving more even cutting. It is easier to operate than any other. Time tests prove it takes less time per green. Lubrication system cannot fail. Cooling system keeps it running sweet on even the hottest, busiest days. All last season, the new Ideal Power Putting Green Mowers were tested on various kinds of greens, in order to insure faultless operation when it was finally placed on the market. It is so light in weight that it can be turned on the most delicate turf without injuring it. It is so simply constructed that virtually nothing can go wrong. Ball bearings and aluminum construction make it the lightest running mower on the market.

IDEAL POWER LAWN MOWER COMPANY

446 Kalamazoo St., Lansing, Mich.

FACTORY BRANCHES

413 W. Chicago Avenue,
Chicago, Ill.

237 Lafayette Street,
New York City

161 Vester St., Ferndale
(Detroit) Mich.

273 Boylston Street,
Brookline, Mass.

Dealers in all principal cities

IDEAL

GOLF COURSE EQUIPMENT

IDEAL POWER PUTTING GREEN MOWER



For permanence

The trend of the times is to build for permanence. Now, as never before, care is devoted to selecting products that will last longer.

In keeping with this movement, more and more culvert buyers are turning to Toncan Culverts. For Toncan, with its pure iron base, plus copper, plus molybdenum, represents the most advanced culvert material yet produced. Exhaustive tests have proven that this skillfully alloyed iron far surpasses any competitive product in rust and corrosion resisting qualities. Assistance in solving your particular drainage problems will be gladly given without charge.

TONCAN CULVERT
MANUFACTURERS' ASSOCIATION
MASSILLON, OHIO

Plants in All Parts of United States and Canada

TONCAN

Copper - Molybdenum

IRON
CULVERTS

Plain or Perforated

for

Railroads
Golf Courses
Aviation Fields
Storm Water Sewers
Suburban Gutters
Sanitary Sewers
Highways