

"We weed for You"

Weeds in a golf course are costly. The time to start cutting down on their cost is when you buy your seed. When you buy impure grass seeds for your greens or fairways, you begin right then to pay for weeds and you keep on paying for them in bills for labor, renovation, etc., for years to come.

It pays to know—definitely and exactly—the quality of the seed you buy.

That is why the Albert Dickinson Company maintains the finest commercial seed testing laboratories in America—so that they can definitely control, and can tell you the exact quality of every lot of seed.

Grass Seeds

Grass seeds of known quality, purity and vitality—refined and tested by Dickinson, are available at all times in season.

- | | |
|---------------------|--------------------|
| Kentucky Blue Grass | Wood Meadow Grass |
| Fancy Red Top | Rough-stalked |
| Chewing's Fescue | Meadow |
| South German | Meadow Fescue |
| Mixed Bent | Bermuda Grass |
| Colonial Bent | Pacey's Rye Grass |
| Sheep's Fescue | Italian Rye Grass |
| Crested Dogstall | Domestic Rye Grass |

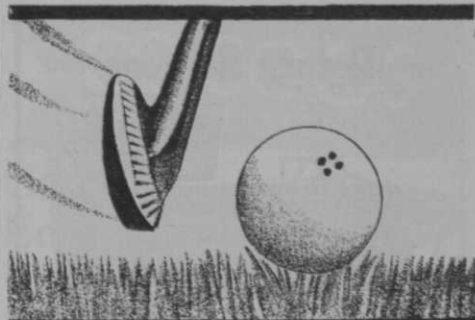
Specify genuine Dickinson Golf Quality seeds of your local dealer. For samples, seeding information, and other information, write

THE ALBERT DICKINSON CO.

World's Largest Handlers of Quality Grass Seeds

CHICAGO

Minneapolis Boston New York Pittsburgh Buffalo



GOOD TURF means good lies

Sparse grass and bare spots are "natural" hazards on nitrogen-hungry fairways. Golfers who "split the middle" and keep out of traps and water, are entitled to better lies.

Strong, quick-healing turf is possible when fairways are fertilized with Arcadian Sulphate of Ammonia. Leading golf authorities and greens experts recommend it. Arcadian is rich in nitrogen (20.56% guaranteed) and enables desirable grass to grow luxuriantly, providing the smooth, velvety carpet that brings joy to golfers.

It is easy to apply by hand or machine, makes no muss and has no odor. Doesn't interfere with play. Inexpensive. Sulphate of Ammonia is used throughout the world as a principal source of nitrogen to feed growing crops.

Mail the coupon below for our free booklet, "Arcadian Sulphate of Ammonia on the Golf Course." Every Greens Committee should have a copy.

The *Barrett* Company

40 Rector Street New York, N. Y.

ARCADIAN

SULPHATE of AMMONIA

The Barrett Company
40 Rector Street, New York, N. Y.

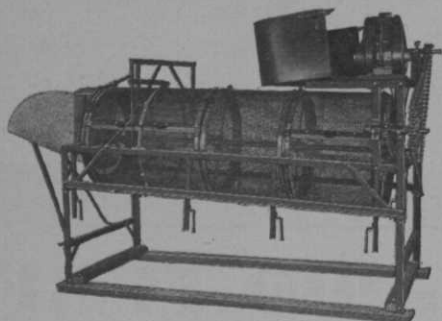
Please send me free copy of "Arcadian Sulphate of Ammonia on the Golf Course."

Name.....

Address.....



COMPOST-**Rotary Screens**-SOIL



"Converse Screens make par greens"

FOR PREPARING SOIL OR SCREENING COMPOST—ONE TO FOUR GRADES AT ONE OPERATION.

DRIVEN BY HAND, TRACTOR OR ENGINE (illustrated).

—BULLETIN ON REQUEST—
ORDER FROM MAKER OR YOUR JOBBER

Manufactured by

F. S. CONVERSE CO., Inc.
BOX B JOHNSON CITY, N. Y.

METROPOLITAN CLUB MANAGERS ASSOCIATION

*

An organization of more than 100 managers of leading metropolitan clubs. Two important functions of club operations are served.

- 1.—the interchange of good ideas of management and improvement.
- 2.—the co-operation with clubs in securing high-type personnel for efficient club management.

Inquiries from Clubs are invited.

*

Metropolitan Club Managers Association

William Norcross, Garden City Country Club, President

J. C. Healy, Siwanoy Country Club, Secretary

duce the ant activity in the immediate vicinity through repellency.

It is very improbable that the ant control problem in fine turf will ever be solved by casual experimentation by either the novice or professional. An experimental project of this nature should provide sufficient funds for three years of research, employing a brainy, aggressive entomologist and a physical chemist who possesses plenty of imagination—and I don't mean the type of imagination induced by gin and orange juice.

Proposes Anti-Ant Team

Hook up these two investigators together for a three-year period with adequate research facilities and \$15,000 per year for salaries and expenses and it is my firm opinion that there would be some action on this problem.

The physical chemist is an essential part of the above research team because the biggest job consists in preparing the poisoned baits so that the presence of the poison in the bait would be entirely camouflaged as far as the ant is concerned.

Here is an opportunity for some enterprising firm with a surplus of cash to work up on ant control, patent same and market it to a waiting public.

As regards weed control, a certain degree of progress and improvement in methods seems to be taking place in connection with fine turf management. The use of iron sulphate as a weed control agent is on the increase of late, due to the efforts of John MacGregor of the Chicago G. C. and other investigators. The chief drawback to the use of this chemical seems to be the necessity for repeated applications in order to obtain an appreciable control.

Arsenate of Lead in Weed Control

In a recent *Newsletter* of the New England Green Section we find the following:

Spraying with arsenate of lead will do a good job on plantain and dandelion. Use four pounds per 1,000 square feet of turf.

On pearlwort three pounds of sulfate per gallon applied with a paint brush gave good results in hot weather.

Arsenate of lead put on dry and washed in killed chickweed and not grass. This is due to the fact that the chickweed leaves being wider, hold the arsenate of lead while the grass doesn't.

Someone told me not long ago that certain greenkeepers in southern New England were obtaining first-class control of

clover in greens by spraying with four pounds of lead arsenate per 1,000 square feet of turf.

All of which indicates that there is a tremendous field for experimental work on the effect of chemical sprays on weed growth in fine turf. The chemical compounds which could be tested in this connection with chance of success are almost unlimited. In the field of industrial by-products alone there are tremendous possibilities.

Arsenate of lead seems to have decided value from the weed-killing standpoint, and yet it is only one of the many arsenates and other compounds of arsenic which should be tested in this respect. Arsenate of lead is much less soluble than certain of the other metallic arsenates, notably the arsenates of calcium, copper, aluminum, zinc, magnesium, etc., to say nothing of the many organic arsenical compounds.

Here again is a potentially lucrative field of research for the industrial concern possessing a good technical staff of chemists, etc., with sufficient surplus funds to finance research of this sort. Weed-killing compounds or mixtures can be patented and trade-marked and as such are a valuable property. The golf course market would receive such preparations with open arms.

COAST GREENKEEPER INVENTS BERMUDA CONDITIONER

Pomona, Calif.—Efficiency Lawn Tool Co., Inc., 453 N. Towne ave., is completing its arrangements for national marketing of the Efficiency Lawn Renovator, a power-operated machine for renovating Bermuda grass areas and similar types of turf. The device is the invention of a Pacific Coast greenkeeper and is meeting with a welcome in that sector. Its users speak highly of the results.

The Efficiency Renovator has power-driven double cutting reels that revolve toward each other in counter revolutions, giving the effect of steel fingers grasping and tearing apart the mat of grass. A Briggs and Stratton four-cycle gasoline motor operates the device. Complete details will be sent to greenkeepers and to interested golf course supply houses.

Cincinnati, O.—Fred Radway, president of I. L. Radwaner Seed Co., New York, and Charles Moore, vice president of J. M. McCullough's Sons, have completed arrangements whereby Radwaner become eastern distributors of McCulloughs' Seaside and Prince Edward Island bent seeds.

COCOOS BENT SEED

Grow Beautiful Greens

like famous Golf Clubs
in California

Write Today
for booklet
and prices.

LECCO

A complete
grass food
also produced
by Lyman
Carrier.

This spring plant Cocoos Creeping Bent, the same seed used by nationally famous California Clubs. Cocoos is the rare strain of *Agrostis Maritima* produced only by Lyman Carrier. It stands erect, keeps its vivid green color, resists disease and withstands adverse weather at seashore or on inland courses. Supply is limited. Order early.

LYMAN CARRIER

Granger, Ind.



Save 75% of Your Cost For Brown Patch Control CALO-CLOR

will do this for you. . . A fact worth remembering when figuring your 1931 budget.

Full Information
on Request

MALLINCKRODT CHEMICAL WORKS

2nd & Mallinckrodt Streets,
St. Louis, Missouri

U. S. G. A. Clarifies Rules at 1931 Meeting

DURING 1930 there were 54 additional clubs elected to membership in the U. S. G. A., bringing the total up to 1,154, according to the report of the Executive committee of the association submitted at the organization's annual meeting held in New York Jan. 10.

H. H. Ramsay, chairman of the Rules of Golf committee, and the new president of the association, announced a number of decisions and interpretations clarifying the rules. Among those that probably will be most frequently employed are the following:

Grass covered side walls leading to a bunker are not part of the bunker.

If a ball can not be found in ground under repair, it must be considered a lost ball under Rule 22. Dirt may be cleaned from a ball lifted from ground under repair.

There is no limitation as to the number of strokes a player may play with a provisional ball before arriving at the approximate location of the ball believed to be lost or unplayable.

The player is the sole judge as to when his ball is unplayable.

It is the opinion of the Rules of Golf committee that where handicap matches result in a tie, the tie should be decided by another round of 18 holes.

Reference was made, in the Amateur Status and Conduct committee's report, to the large increase in cases brought before it as a result of the popularity of the capsule golf courses. Cash prizes in such cases were prohibited amateurs.

Disagreement with the Royal and Ancient was reported by the Committee on Implements and the Ball in the case of the "Ruffex" iron marking.

Tribute was paid to the golf ball manufacturers for their co-operation in introducing the new ball. According to Herbert Jacques, chairman of the Implement and Ball committee, the demand for the new ball on June, 1930, was 10%, which grew to 30% in August and in September became 50% of ball sales in the U. S.

To assist in ironing out the qualifying miseries of the Amateur, the announcement was made that hereafter aspiring golfers will qualify for the event in local elimination tests, like the qualifying rounds of the Open.

June 8 was announced as the date of the

National Open qualifying round in the various sections. The Open will be played at Inverness, Toledo, July 2, 3 and 4.

The Green Section report stated that Dr. K. F. Kellerman, associate chief of the bureau of plant industry, U. S. Department of Agriculture, will serve as action chairman of the Green Section's Research committee during Dr. Oakley's absence. Dr. Monteith compiled the report for the Green Section committee which is headed by Wynant D. Vanderpool, and referred in detail to the Section's work in research, education and advisory capacities. Reference was made to the Section's contributions of \$1,000 each to turf work done at New Brunswick, N. J., and State College, Pa., and to the activities at the Arlington, Midwest and other turf gardens. There are 24 demonstration turf gardens at various golf clubs. The Green Section employs these strategically located establishments in much of its work.

In announcing its plans for 1931 the Green Section referred to the problems of insect pests and fairway improvement as apparently calling for the big play. Ants and mole crickets were named as the damndest of offenders. Monteith said, in the report, "If some of the cheaper insecticides are found to be as effective against some turf insects as is arsenate of lead, the saving to a single club might easily support research work on insect control for several years."

Elsewhere he outlined the policy in fairway improvement research by saying: "Some of the fairway problems which we or others are not equipped to answer definitely are: best methods of preparing, fertilizing and seeding soils for fairway purposes; fertilizing programs including source of material, time of application, and rotation of various fertilizers; best seed mixtures for various soils and climatic conditions; best use of water; best height to cut; control of weeds (particularly clover); renovation of poor, weedy turf; perpetuation of good Bermuda turf; the place of carpet grass in southern fairways; propagation of centipede grass in the south; and treatment best suited to bring about recovery from emergencies such as the drought of this summer."

The executive committee also reported continuation of the effort to have golf taxes reduced.

The U. S. G. A. share of the gate receipts this year was highest in the game's American history.

BENT GRASS SEED

Direct from the farms where it grows

It has been broadcast that there is a shortage of Bent Grass Seed in this country, due to the increase in tariff.

It is true there has not been so much imported from Germany and New Zealand, but there is no shortage in the production of the native grown Winter Hardy Bents that produce the finest turf of anything in existence. The American farmer is increasing his areas very materially and we are not increasing our prices.

Winter hardy BENT GRASS SEED grown under the rigid climatic conditions of New England makes the most permanent and desirable turf for your greens, fairways, tees, fine lawns, etc.

A. N. PECKHAM
Kingston, Rhode Island

	PRICES	
	100 lbs.	100 lbs.
R. I. BENT (so-called Colonial Bent)	\$1.15	\$1.00
CREEPING BENT	2.25	2.00
VELVET BENT	3.75	3.50
MIXTURE 1/2 R. I. & 1/2 Velvet Bent	2.50	2.25
FAIRWAY MIXTURE (composed of four different varieties of fine turf grass seed including Bent)65	.60

IDEAL ESTABLISHES SIX NEW SALES AND SERVICE STATIONS

Lansing, Mich.—Since close of the 1930 season the Ideal Power Lawn Mower Co. has shown considerable activity in the way of establishing new sales and service organizations for the preparation of 1931 business.

In the Pittsburgh district the Golf & Lawn Equipment Co. opened a complete sales and service at 310 Duquesne Way, Sewickley, this establishment being in charge of H. H. Nichols who was formerly a factory representative of the Ideal company covering considerable territory in western Ohio and eastern Pennsylvania, and who has wide acquaintance among golf officials and greenkeepers in Pittsburgh and adjacent territory. This service station is completely equipped with special equipment for servicing all Ideal products.

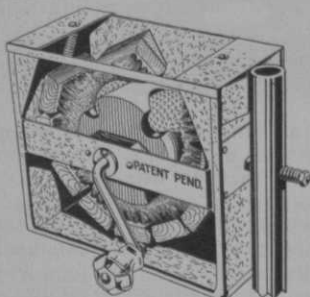
In Cincinnati, C. S. Schneider is operating the Ideal Power Lawn Mower Sales & Service, carrying a complete stock of Ideal equipment, golf course supplies and also maintaining fully equipped service station for the repair of all Ideal products. Schneider was formerly in charge of the lawn

mower department of the former Ideal dealer in Cincinnati.

In Cleveland, James R. Howell Co., which has been Ideal distributor for a number of years, this year completely overhauled and re-equipped its service station so that it can give factory service on all Ideal equipment. The Cleveland distributor will also this year enlarge its sales force, taking over considerable additional territory in northeastern and eastern Ohio.

Earl F. Bahm has been appointed as the authorized Ideal distributor in Buffalo, replacing former dealer, and the Buffalo distributor also has a plant completely equipped for giving factory service on all Ideal equipment. The Buffalo distributor will handle considerable territory in the western section of the state and as far south as the Pennsylvania line.

At Erie, Pennsylvania, Bahm & Mueller will handle Ideal equipment for '31, also operating a complete service station. Ideal also has entered into new selling arrangement for the entire province of Quebec, Canada. Mowers for that section are to be distributed through W. H. Perron & Co., Ltd., Montreal, Quebec.



The 4-Ball Machine is used on full-size links (12-Ball on all other courses.)

NOW COMES THE "PROFESSIONAL" GOLF BALL WASHER

(for Full-size Links or Miniature Courses)

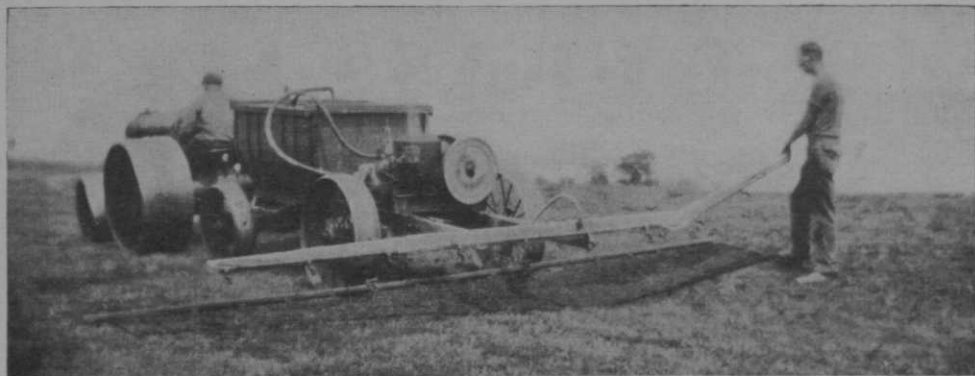
Washes 500 Balls per Hour

4-Ball Size—For Full-Size Golf Links

- (1)—This model is designed to be used at each of the tee-offs. A foursome may wash their golf balls rapidly.
- (2)—Golf balls rotate in two directions, assuring complete cleansing of the balls. A few revolutions of cylinder does the work.
- (3)—Visible Washing. No splash. Adjustable Tension. Speed. Place one at each Tee: 2 at 1st and 10th; total, 20, for most complete guest service. 4-Ball capacity (Wt. 4 lbs.), \$7.50 F. O. B. Davenport, Iowa, C. O. D. Special Rate on 20: send for 1; then, 19. Money-Back Guarantee.

GOLF BALL WASHER CO.

2409 East Street, Davenport, Iowa



Steel door-mat drag behind power sprayer made Crombie's work effective.

How Edgewood Eradicated Plantain and Dandelions

By E. A. CROMBIE, Greenkeeper
Edgewood Country Club, Wilksburg, Pa.

FARMS in the immediate vicinity of the Edgewood Country Club have been abandoned and no effort is made to cultivate the land. As a result, the dandelion and plantain situation on our grounds got so bad that drastic action had to be taken to eliminate it. In early spring, during blossom time, the rough next to the fairways was yellow with dandelion blossoms. Each of these coming to seed meant an extra crop not only in the immediate vicinity, but they were carried by the wind an indefinite distance.

We tried to eliminate these weeds by the use of caddies. The quantity removed by them was enormous, but it was an extremely expensive proposition. Later, however, we found that the fairways on which we had spent so much time and money were in practically the same condition as prior to the time the weeds were removed. This forced us to find some other solution.

Later, I read an article in one of the Department of Agriculture bulletins in which they stated that they had been very successful in some experimental work on dandelion eradication. After 7 applications of iron sulphate solution they had eliminated practically 98 per cent of the dandelion. Also, that it did not affect the grass in anyway, but there was a possibility that it may retard, to a small extent, some of the bent grasses on the greens.

Our condition was such that it was imperative that we do something, and at once, so it was decided to try this Sul-

phate of Iron solution. We did not want to run too much risk, so we experimented with the dandelion and plantain in the rough, paralleling the fairways, and after 5 applications of this solution, two weeks apart, we feel that our experiment has been very successful. We have had an extremely dry season, which has reacted against this to a certain extent, and we



Mixing the iron sulphate calls for exact adherence to the directions. Have dependable men on this job.

believe that had we had an average summer rainfall the results would have been very much better.

Our method was as follows:

1. We used the Government formula— $1\frac{1}{2}$ lbs. of iron sulphate in granulated form dissolved in 1 gal. of water, filtering it through 4 thicknesses of cheese cloth.
2. We purchased a Friend power sprayer of 200 gal. capacity,

with a motor attachment affixed.

3. We rigged this up with a drag attachment composed of steel door-mats. The object of this attachment was to bruise the fibre in the dandelion leaf before the solution was applied.

4. Spray nozzles, set about 18 in. apart, were arranged on a frame, set back of the mats, and operated at approximately 150 lb. pressure.

It is the intention next spring to go over not only rough, but fairways as well, and continue this process until the dandelion and the plantain situation is entirely eliminated.

NELSON OFFERS SYSTEM DESIGN SERVICE WITH "ROBIN" SPRINKLERS

Peoria, Ill.—Nelson Mfg. Co., makers of the Lark golf sprinkler, are offering to help green-committees and greenkeepers develop plans for watering fairways through underground hoseless systems. They will furnish without charge, when fairway sketches are submitted, blue prints and plans showing the arrangement, amount and sizes of pipes, fittings, valves, etc., necessary for fairway sprinkling. From these plans as furnished anyone competent in pipe installation can readily figure the cost of installation.

For sprinkling fairways in connection with these underground systems the Nelson Mfg. Co. is offering the new "Robin" pop-up sprinkler, which covers a diameter of 90 to 100 feet, eliminating half the cost of installation, when compared with the old type of underground sprinkler head.

The "Robin" pop-up is permanently placed in a malleable iron casing that is set in the ground with the top even with the surface. The water is fed to the sprinklers by pipes placed a foot below the surface, arranged for draining in winter.

The "Robin" pop-up is used to best advantage in series. If the water supply is sufficient, from two to five acres may be sprinkled at one time. Eight to ten sprinkler heads are used to an acre of fairway.

When the water is turned on the heads are raised by the water pressure and immediately start sprinkling. When sprinkling is finished, the control valve is closed and each head controlled by that valve drops to its place in its casing, closing the

Where only perfect
turf will do — use

Dreer's

Superior Grass Seeds

These special mixtures make superb greens and lawns for fine estates. They are admirably adapted to various conditions of soil, sunlight and shade.

Our Special Grass Seed Circular is free.

Dreer's 1931 Garden Book

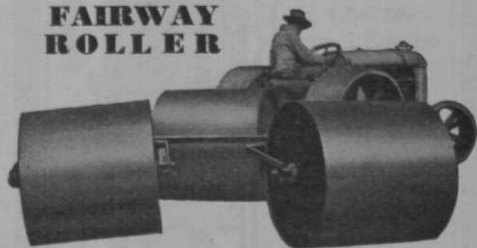
contains many suggestions on lawns, ornamental planting and flower and vegetable gardens. Sent free to anyone mentioning Golfdom.

HENRY A. DREER

1306 Spring Garden Street
Philadelphia, Pa.

DUNHAM

WATER-WEIGHT
TRADE MARK
FAIRWAY
ROLLER



ADJUSTABLE IN WEIGHT

BY increasing or decreasing the amount of water in the hollow steel drums the Dunham Fairway Roller is adjustable to any weight from 1,300 to 1,500 pounds.

ROLLS UNEVEN SURFACES, TOO

The Dunham's three giant sections operate independently to conform to the contour of the ground. Strongly made. Obtainable at principal distributors or direct from:

DUNHAM LAWN ROLLER CO.

113 Chambers St., New York, N. Y.
Canadian Office: Mount Royal Hotel, Montreal
Write for Details and Prices.

A TRULY GREAT HOTEL ...

WHEN you visit Detroit next time stop at Hotel Fort Shelby. You'll enjoy its thoughtful, efficient, unpretentious service . . . its savory foods and cozy, cheerful, charming rooms. Every unit in the Hotel Fort Shelby is paneled . . . servidor-equipped . . . attractively appointed and popularly priced; all rooms have private bath and circulating ice water. Hotel Fort Shelby's location in the heart of Detroit's shopping, theatre, financial, insurance and wholesale districts is a happy one . . . no other large hotel in the metropolitan area is so near the principal railway terminals, airports and steamship piers. 900 rooms . . . many as low as \$3.00 per day . . . suites \$10.00 and upwards.

Motorists are relieved of their automobiles at the door without service charge.

Write for Free Road Map.



Hotel Fort Shelby

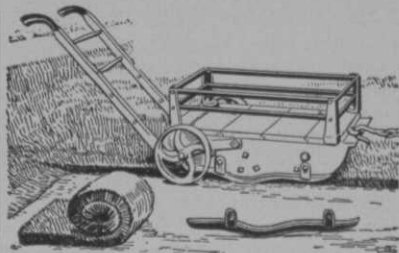
E. J. BRADWELL, Manager

DETROIT

"AGLOW WITH FRIENDLINESS"



THE RICHMOND SOD CUTTER



A PROFITABLE time and labor saver that gives a neater job of sodding. Cuts a strip 14 inches wide; adjustable, uniform thickness; any length desired. Makes a smoother, firmer turf especially on embankments. Made for either horse power or tractor.

The Richmond Sod Cutter truly pays for itself in a day—Write us today for details—Complete, ready for use \$35 F.O.B. Richmond.

RICHMOND SOD CUTTER CO.
Richmond, Indiana

Le-co FLAGS

Will Not Fade, Ravel, or Run. Can Be Washed Like a Towel

Fully Guaranteed

LE-CO.

1055 SO. HILL ST. LOS ANGELES
CALIFORNIA

GOLF MADE EASIER

By CHARLES HERNDON

PRICE \$2.50. Postpaid to Any Address
220 Pages — Illustrated — Beautifully Bound

The Most Instructive Golf Book
A GOOD GOLF INVESTMENT!

Mail your check to
CHARLES HERNDON
1800 N. La Brea Ave., LOS ANGELES, CAL.

top of the casing with a metal plate that is even with the ground surface. There is no projection that will interfere with mower, tractor or golf ball.

Nelson further states: "The use of the pop-up type of sprinkler in connection with underground pipe systems eliminates almost all of the labor connected with sprinkling, doing away entirely with the handling of hose and the frequent changing of sprinklers. The "Robin" pop-up positive drive principle is simple and has been in almost constant use in a limited territory in California for two years. Its even sprinkling and long wearing qualities have been proved."

IDEAL HAS NEW POWER PUTTING GREEN MOWER

Lansing, Mich.—The Ideal Power Lawn Mower Co. has a new power putting green mower claimed to embody every feature greenkeepers require. With new power and new light weight, this model is a marked departure. Instead of lightening and speeding up the ordinary power lawn mower, Ideal has motorized a very light, hand type putting green mower. It is said to be the lightest power putting green mower ever built, and can be turned safely around on the most delicate turf. It is suited to both level and rolling greens. A light, ball bearing transport cart, with wide tires, easily wheels the new power green mower from one green to another.

Particularly interesting is the power application—applied direct to cutting reel, then through the gears to the traction roller. In this way, the reel is actually tractor driven—insuring smooth, even cutting on sharp raises or in heavy work, reducing wear on gears and eliminating all chance of scuffing. The new Ideal Power green mowers were thoroughly tested on all types of grass in various parts of the country during the year of 1930. The clutch operating the drive mechanism is so designed that to start the machine forward the operator merely raises the mower handle and the clutch is automatically engaged. At the end of the swath, the operator turns the clutch lever, raises the handle and the machine is again travelling across the green.

Racks HANDICAP Cards

John Willy Handicap Racks and Cards are standard with practically all the leading American golf clubs. Write for booklet.

JOHN WILLY, 443 South Dearborn Street,
CHICAGO, ILLINOIS

A post card will bring you a copy

The Best Book on Outdoor Fountains

Prepared by Specialists in Outdoor Water Devices.

MURDOCK

OUTDOOR BUBBLE FOUNT

Will Not Give Trouble. Self-Draining. Every Drink Fresh from Main.

MURDOCK
426 Plum St., Cincinnati, O.



Headquarters for GRASS SEEDS!

This house has a record of more than 20 years' service to hundreds of golf courses in all parts of the country. We maintain our own cleaning plant, one of the largest in the East, and a modern seed testing laboratory. All seed is tagged with our test at time of shipment. Tests may be verified at Washington before the seed is used.

It will be a pleasure to quote you.

The Philadelphia Seed Co.
103-105 Arch St. Philadelphia, Pa.

DIAMOND Steel Center TRACTOR SPUDS

Long wearing and sharp until completely worn out—because of hard tool-steel center—outside wears away faster. Made in all sizes to fit any size or make of tractor. If your dealer can't supply you, write direct for sample or literature

DIAMOND CALK HORSESHOE CO.
4702 Grand Ave., Duluth, Minn.



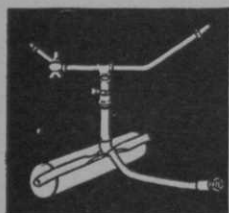
A Better GOLF SWEEPER

Sweeps clean—Reduces labor. One man does the work of five.

Ask Your Dealer or Write Us Direct
Springfield Lawn Sweeper Co.
Springfield, Ohio

Also makers of tractor drawn sweepers





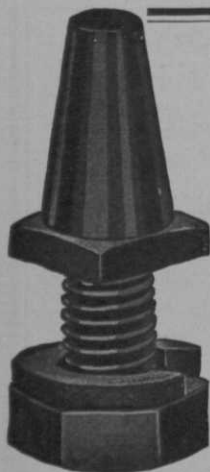
ECONOMY SPRINKLERS

make all water systems efficient. Sturdy and wear-proof, they distribute water evenly without waste.

ECONOMY IRRIGATION CO. INC.

21 Spokane Street, Seattle, Wash.

Distributors in leading American and Canadian Cities.



Tractor Wheel Spuds

The R. H. wheel spuds save time installing and removing, they are made in many sizes for any type tractor or purpose. Low price and quality have been welcomed by Golf Clubs, in use on more than one-half the clubs in U.S. and Canada.

Sample spud and circular on request; advise make of tractor and purpose used for.

(If your Ford or equipment dealer cannot supply, write direct. Immediate shipment.)

R. S. HORNER
GENEVA, O.

Manufacturer of Wheel Spuds, Golf Tractor, Golf Wheels for Fordson and Trucks.

FOUR CUTTING EDGES

BUDD BLADES

INCREASED PRODUCTION PERMITS
LOWER PRICES

The same sturdy holding attachment. The same razor keen knife steel blade. The same exacting care in milling and fitting. The same guarantee. Write for Circular G.

BUDD MFG. CO., Ravenna, O.

TO YOUR OWN CLUB BE TRUE AND IT WILL FOLLOW—that before ordering Charge Checks, Score Cards, Guest Registers, Caddy Cards and other forms you will first see our line of standardized golf printed matter.

JOHN H. VESTAL COMPANY
703 South La Salle Street • • Chicago

Professional—Desires location for 1931. Prefers Eastern location. Single, age 30 years. Nine years' experience as pro. Excellent teacher; experienced in upkeep; good clubmaker and successful in training caddies and shop management. Winner of P. G. A. event in present locality. At present attached to club, but have excellent reasons for wishing to locate elsewhere. Best of references furnished as to character and ability. Don't use alcohol. Address: Ad 1014, % Golfdom, Chicago.

Greenkeeper—Wants position with reliable club. Knows golf course work, the machinery and the handling of men. Can furnish best of references. Address: Ad 1015, % Golfdom, Chicago.

Greenkeeper—With many years' experience who knows his greens, tees and fairways, their need and care, also the value of records, machinery, fertilizers and time, is looking for a place where the ability to handle the position is needed and wanted. Can furnish references. What have you? Address: Ad 1016, % Golfdom, Chicago.

Would like to get in touch with club wishing services of A-1 greenkeeper (single), nine years' experience. Specialize in the planting and upkeep of bent stolons. Good references. Address: Ad 1017, % Golfdom, Chicago.

Greenkeeper would like position with progressive club. Have taken course for greenkeeper at Massachusetts Agricultural College. Now in charge of 18-hole course. Have had seven years' experience in golf work and have the best of references. Address: Ad 906, % Golfdom, Chicago.

NEW PUTTING PRACTICE RUG CAPTURES FANCY OF NUTS

Brooklyn, N. Y.—Thermwool Mfg. Co. is making a new practice putting surface that is inexpensive, durable and closely approximates the putting speed of a good green. The device sells for \$12.50 with a good margin in it for the pro.

One of them was in GOLFDOM'S office for a while but killed too much time for the help and the visitors. So one of the smart boys took it home where it is by no means a fiscal asset to one whose guests are proficient putters. This demonstrates the surface putts like a real green.



For Better Trees and Shrubs

Prune!

It is easy to do good work with the BARTLETT COMPOUND LEVER PRUNERS. Used and endorsed by experts. We make a complete line of Pruning tools, shears, saws, trimmers, etc. Write for free illustrated catalog.

Bartlett Mfg. Co. 3015 E. Grand Blvd. Detroit, Mich.