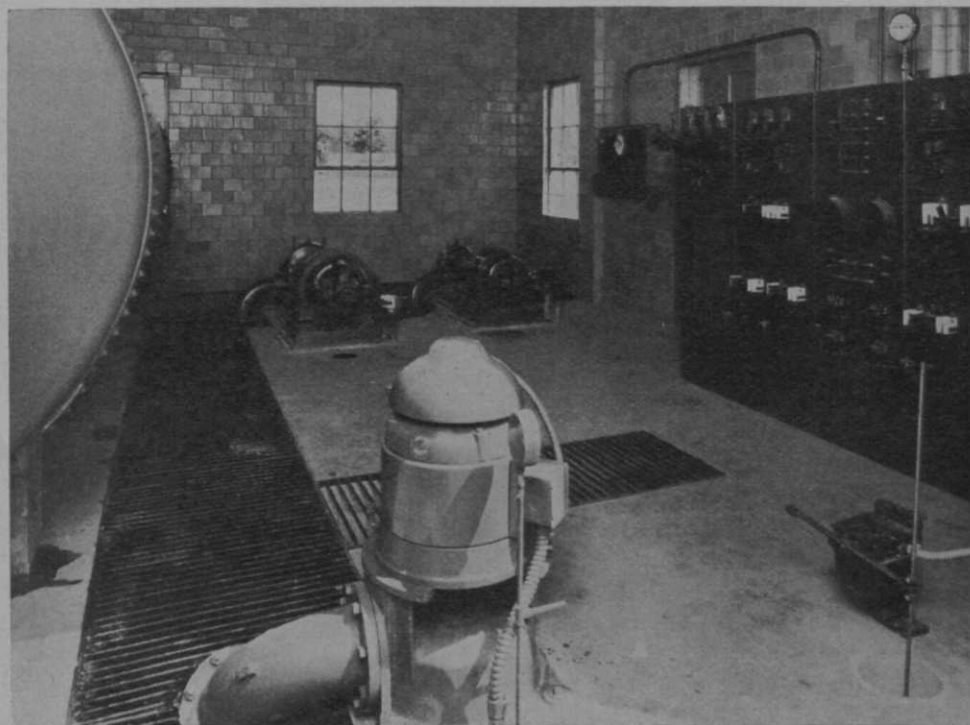
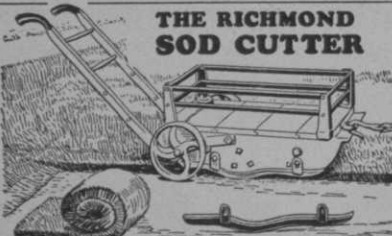


Concealed sprinkler type becoming popular on golf courses. Mowers pass freely over concealed sprinklers not in use.



This photograph, showing interior of Eden pumphouse, was omitted through error in September GOLFDOM. Note deep well pump in foreground discharging into intake sump connecting to large pond. Roof has hatch over turbine pump for well driller's future convenience.



**THE RICHMOND  
SOD CUTTER**

For a quick, neat sodding job. Cuts strip 14 inches wide—any thickness, any length desired. Price \$35 complete F.O.B. Richmond. Richmond Sod Cutter Co., Richmond, Ind.

## MILORGANITE

### THE IDEAL TURF FERTILIZER

For further information address

**SEWERAGE COMMISSION**  
508 Market Street Milwaukee, Wis.

**Would You Like Better Greens at a Real Saving!**  
"Although we have only had our KEMP Soil Shredder for about 10 days, we must say that it does wonderful work. It is not only a labor-saver, but delivers a product which can not be obtained by hand screening." Mark A. Cassidy, Landscape Architect, Camp Engineer, Warrensburg, N. Y.



KEMP, by properly shredding soil and retaining the vital humus, makes better top dressing. Power driven, it prepares soil in one operation—saving from a third to half the time and labor of hand-and-shovel methods. Write for details and Catalog. KEMP MANUFACTURING Co., Dept. C, 2001 Peach St., Erie, Pa.

No. 2 Kemp Soil Shredder showing sifter attachment

Prompt Shipment from Warehouse Stocks



## ECONOMY SPRINKLERS

make all water systems efficient. Sturdy and wear-proof, they distribute water evenly without waste.

### ECONOMY IRRIGATION CO. INC.

21 Spokane Street, Seattle, Wash.

Distributors in leading American and Canadian Cities.

fairway irrigation can be initiated at an outlay of \$10,000 to \$20,000, and later extended over a period of years, into ultimate hoseless irrigation, at a low total cost, and with no replacements under 12 to 15 years, or more. Clubs interested in fairway irrigation should arrange a thorough investigation of all factors involved in their water supply and prospective distribution system, and give consideration to proceeding along safe and sane lines, to ultimate hoseless irrigation.

### Low Cost Hoseless Systems.

The necessity for low operating costs has been responsible for the design of a "one man" hoseless system, a system whereby one man can irrigate an entire 18-hole property, including the house grounds. Systems of this type can be installed at an increase of from 10 to 25 per cent over the construction cost of ordinary hose systems (except on courses of rambling design and large total property area). The first systems of this type will be installed during the fall of 1930. It is quite possible that the "one man" system will prove very popular and lead to a rapid spread of hoseless irrigation throughout Eastern States.

### Benefits of Irrigation.

Artificial irrigation is a necessity on the golf courses of the eastern and central states, but the golfing public has not yet discovered this. At Kansas City they even say that irrigation is impractical. Nevertheless, fairway irrigation is spreading and by 1940 nearly all of our 18-hole courses will be under complete irrigation. Of course, water alone is not a panacea for turf ills. Five things are needed to produce the finest turf: tilling, seeding, fertilization, irrigation and drainage and over all, intelligent turf management. Irrigation is a great blessing to established turf. It can be mismanaged to produce weeds as at Kansas City. But the general results are indisputable.

### Evidence on Every Course.

Nearly every course shows evidence of the benefits on fairway irrigation. Go out on your courses and examine the fringes of your greens—where fairway turf merges into putting green—and see for yourself what a judicious combination of fertilizer, tillage, and water, will do for the fairway turf. While you are out there, count the weeds you see in the green fringe (usually you can easily count all you can see) and then imagine the condi-

# This Helps Your Buying

Use this page to notify GOLFDOM of your club's requirements for course, clubhouse and pro shop, and you will get prompt and complete details from leading manufacturers.

*Check this page and mail it to GOLFDOM,  
236 N. Clark St., CHICAGO*

## Announcement boards

Architects—Course;  
Landscape

## Asserate of Lead

Awnings

Bags (golf)

Balls

Ball markers

Ball washers

Bath Slippers—Paper

Bath Towels

Benches, tee

Bent stolons

Beverages

Bird houses

Brown patch preventives

Buffing Motors

Caddie badges

Caddie time clocks

Calks—for golf shoes

Chickweed eradicators

Clubs

Club racks

Compost distributors

Compost mixers

Coolers, water

Discing machines

Dish washers

Display cases

Drags

Drainage engineers

Dryers

Dump carts

Electric systems

Fencing

Fertilizer

Fertilizer distributors

Flags

Flag poles

Flood-lights

Fountain—Drinking

## Furniture—Clubhouse,

Ground, Foreh

Garbage incinerators

Handicap racks

Handicap cards

Harrows

Heating Systems—Clubhouse,  
Water

Hedge trimmers

Hole cutters

Hole rims

Hose

Indoor putting surfaces

Insecticides

Kitchen equipment

Landscaping material

Laundry equipment

Lawn sweepers

Linens

Lockers

Miniature Golf Courses

Mole traps

Motion Picture Cameras,  
Projectors

Mowers—Fairway, Green,  
Rough, Tee

Mower blades

Mower overhauling

Mower sharpeners

Organizing service

Phonographs, automatic

Pipe—Drainage, Water

Playground equipment

Plumbing supplies

Pumps (shallow—deep—)

Putting cups

Refrigerators

Refrigerating Machines

Rollers—Fairway, Green,

Spiked

## Score cards

Seed—Fairway, Green

Seeders

Shafts—Hickory, Steel

Shelters, Course

Shoes

Showers

Shrubs, Trees

Silverware

Sodcutters

Soda fountains

Soil screeners

Soil testers

Sprayers

Sprayers  
(arsenate of lead)

Sprinklers

Sprinkling carts

Swimming pools

Tanks—Elevated, Gasoline,  
Underground

Tea room equipment

Tee boxes

Tee markers

Tee umbrellas

Tees—Patented

Tennis court equipment

Tile—Drainage

Time recorders

Tractors

Trophies

Water softeners

Water systems

Water system engineer

Weed killers

Weed stingers

Worm eradicators

(PLEASE PRINT SIGNATURE AND ADDRESS PLAINLY)

Club .....

By .....

Position .....

Address .....

Date.....1930

## KILL *Chickweed*

... the only SURE way with

### PURFECK CHICKWEED ELIMINATOR

NO more hand-pulling, patching or digging!  
Simply *Spray on* PURFECK and out comes  
Chickweed,—roots and all. Simple, effective,  
saves time, money and labor. Used by the  
country's leading golf clubs.

Ask your dealer or write direct

ADALINK CHEMICAL COMPANY  
290 Passaic St. Newark, N. J.

A post card will bring you a copy of

### The Best Book on Outdoor Fountains

Prepared by Specialists  
in Outdoor Water Devices.

### MURDOCK

OUTDOOR BUBBLE FOUNT  
Will Not Give Trouble.  
Self-Draining. Every  
Drink Fresh from Main.

MURDOCK  
426 Plum St., Cincinnati, O.



### DIAMOND

#### Steel Center Tractor Spuds

will keep themselves sharp after many  
miles of service. Diamond Hardened  
Tool Steel Center lengthens their lives.  
Leaves clean-cut perforations. Will not  
damage turf. Write for information

Diamond Calk Horseshoe Co.  
4702 Grand Avenue, Duluth, Minn.

## SEASIDE BENT

(COOS COUNTY STRAIN)

In Bags Sealed by the Dept. of Agri-  
culture from Fields that Certify

100% PURE

### TOM STACK

Grower of Oregon Bent Grasses.

Box 867

MARSHFIELD, OREGON

tion of your fairways were they to receive  
the same treatment that these green  
fringes unavoidably receive as a concomi-  
tant to caring for the greens.

### Itemizing the Benefits.

Irrigation makes up for the irregularity  
of the rainfall and for its inadequacy,  
providing the optimum moisture content  
required for best plant growth.

Irrigation provides the means of secur-  
ing maximum results from fairway fertili-  
zation.

Pivots (when replaced) will grow on ir-  
rigated ground. Scars and other wear and  
tear are quickly and automatically re-  
paired.

Irrigation enables the turf to hold its  
improvements in quantity and quality.  
Without irrigation the growth of the  
spring and fall are largely lost in the sum-  
mer, and succeeding years often yield  
poorer, rather than, better, turf.

Irrigation to proper depth (usually six  
inches) plus sensible fertilization, reduces  
weed growths, and strengthens the fair-  
way grasses to the point where they are  
able to crowd out undesirable growths.

### Player Benefits.

Artificial irrigation maintains the turf  
in uniform playing consistency, and hence  
in uniform playing length, throughout the  
season. The same stroke produces the  
same distance at any time of the year.

Irrigation produces turf that provides  
sporty lies throughout the year and makes  
for a better game. Nearly every shot is  
"teed up" on a mat of grass. Brassie  
lies are particularly improved. Irrigation  
develops the grounds to their maximum  
beauty, and comfort. Just compare walk-  
ing 7,000 yards over hard, dry, dusty  
ground with a like walk over springy,  
velvety, green turf.

Irrigation saves annual seeding ex-  
pense.

Irrigation increases the guest fees and  
the patronage throughout all departments.  
If there be any panacea for the finance  
committee, it is fairway irrigation, and the  
resultant increased revenues.

The sum total of complete irrigation is

### A Better GOLF SWEEPER

Sweeps clean—Reduces labor.  
One man does the work of five.

Ask Your Dealer or

Write Us Direct

Springfield Lawn Sweeper Co.

Springfield, Ohio

Also makers of tractor drawn sweepers



When you mention GOLFDOM the advertiser knows you mean business.

the maximum pleasure from the game of golf. Our clubs east of the Rocky mountains are slowly discovering this fact, and accordingly general irrigation is spreading slowly, but surely, among the stronger clubs, and in a very few years will be classed as a necessity instead of a luxury; for fairway irrigation is indeed a necessity, if we are to have the very finest turf, and the greatest pleasure from our golf.

**CORRECTION**—In the September installment of the Miller series on fairway watering two illustrations were incorrectly captioned. The view described as "interior of Eden pumphouse" actually showed the emergency pumping installation in the stadium grounds to supply University of Michigan golf course new seeding.

The California hoseless outlet and portable sprinkler was incorrectly described as a "concealed sprinkler."

## Canadians Hold Second Show of Course Equipment

ONTARIO greenkeepers held their second golf course equipment and supply exhibition and demonstration at the Royal York G. C., Toronto, Sept. 9. The event was first held in 1928 and allowed to lapse during 1929. This year's revival was marked by a large attendance of both course maintenance men and manufacturers and won enthusiastic comment for the practical manner in which it was handled.

W. J. Sansom, H. Hawkins, H. Lloyd, W. Kirby, F. Hamm, J. Austin, J. Stanfield, C. W. Freeman, A. McCallum, J. Abbot, J. Anderson and F. Haynes comprised the committee conducting the exhibition.

Working demonstrations of equipment were given by various manufacturers and greenkeepers provided with an excellent opportunity to make close-up comparisons under actual operation conditions. It now is the intention of the Canadian greenkeepers to make the equipment demonstration an annual fixture.

Quebec greenkeepers made up a goodly percentage of the 200 in attendance at the affair.

## Racks HANDICAP Cards

John Willy Handicap Racks and Cards are standard with practically all the leading American golf clubs. Write for booklet.

**JOHN WILLY,** 443 South Dearborn Street, CHICAGO - ILLINOIS

## The Peerless Mower Sharpener

THE Peerless Mower Sharpener grinds all makes of Power, Horse and Hand Mowers in 20 to 30 minutes, with razor-like edge giving any desired clearance or bevel.

Mowers run easier, require less power and gain in speed. One owner writes, "The Peerless Sharpener saves us from \$700 to \$800 annually."

Write for catalog and list of users.



**The Fate-Root-Heath Co.** 988 Bell St., Plymouth, O.

IN THE  
USE OF

## THE MURRAY Course Maintenance Cost System

THERE IS NO GUESS WORK

DESIGNED for Semi-Monthly Pay Rolls it gives the labor cost on every course operation. You may know how, when, where and why every dollar is spent.

Our Westchester Forms cover weekly pay rolls in like manner and are used by over 200 clubs.

**JOHN H. VESTAL CO., Printers**  
703 South LaSalle Street - Chicago

## CREEPING BENT STOLONS and SOD

Specializing in

### Metropolitan and Washington

With a Limited Amount of Velvet Bent Stolons

**SPECIAL PRICE ON TRUE METROPOLITAN BENT SOD**

Daily Truck Deliveries in Phila. District

## THE FLOREX GARDENS

North Wales, Pa. Established 1908

## —COUPON SCORE CARDS—

MEDAL PLAY TOURNAMENT CARDS  
MATCH PLAY TOURNAMENT CARDS  
GRAPHIC HANDICAPPING CARDS  
TOURNAMENT RECORD BOOKS

Write for Descriptive Circulars

**THE GRAPHIC SCORE BOOK CO.**  
100 Main St., Park Ridge, Ill.



## Classified Ads.

Where the Man and the Job Get Together

Rates: 10 cents a word per issue. Minimum charge \$2.50

**Young man** with five years' pro experience desires winter employment as pro, assistant or caddie master. Is well qualified, industrious and thoroughly dependable. For complete details address: *Box 610, % Golfdom, Chicago.*

**Pro-Greenkeeper** with 11 years' experience in shop and greenkeeping desires new location for next season. Also is interested in winter location. First-class instructor and good business man. College graduate and has finest recommendations. Three years at present club. For complete details write: *Box 611, % Golfdom, Chicago.*

**Manager** with 11 years' successful experience at prominent metropolitan district club desires new location for 1931 season. Has unusually fine qualifications in general clubhouse management, finance and secretarial duties. Has been directly responsible and financially successful in handling club operating details in a manner that relieves officials of worries connected with all phases of house operation. For complete information write: *Box 612, % Golfdom, Chicago.*

**South Carolina Club** with 135 members desires competent steady professional. Guarantee is \$50.00 a month with full concessions. Furnished bedroom in clubhouse for pro, who will be required to stay on premises at night. A good opening for a conscientious young man who will grow with the club. Address: *Box 613, % Golfdom, Chicago.*

**Experienced professional** wishes position with club for winter months. Now employed. Can furnish excellent references from present club. Good instructor and player. Address: *Box 614, % Golfdom, Chicago.*

**Want professional** (no greenskeeping) of highest calibre for highest class fee course, in central west. Must be good teacher. \$350 per month minimum guaranteed. Average attendance 1,000 per week. A gold mine if you can qualify. Address: *Box 615, % Golfdom, Chicago.*

**Well-known and very successful club manager** desires to make new connection on expiration of his present contract October 1st. Located in California for past several years but will go anywhere. Wife is valuable aid as hostess in building club spirit and clubhouse business. One of the country's most successful operators of a golf club on a first-class basis. Full details of qualifications will be sent immediately upon request. Please advise something about your situation in your answer. Address: *Box 617, % Golfdom, Chicago.*

**Professional and wife** desires position for next year. Wife is competent clubhouse operator, having been with present club for eight years. Pro is excellent instructor and good man at course maintenance. Is sober, steady, reliable and hard worker. This team will make a staff for any average size club. Address: *Box 616, % Golfdom, Chicago.*

**Wanted**—Position as Manager or General Manager. Have successfully managed four large club properties located in Illinois, New York, North Carolina and Oklahoma. Thirty-five years of age, college education, excellent health, A-1 references; can furnish bond for any amount required. Address: *Box 618, % Golfdom, Chicago.*

**Wanted**—To buy or lease in the middle west or south, daily fee golf club with good earning possibilities under competent management. Please give complete details of proposition including size of town and competitive golf aspect in first letter. Address: *Box 619, % Golfdom, Chicago.*

**Wanted**—Second-hand Holtzer-Cabot Golf Polishing Motor. Address *A. L., % Golfdom, Chicago.*

**Greenkeeper** wants position with reliable club. Can furnish best of references. Available any time after December 1st or will consider engagement for spring of 1931. Address: *Box 620, % Golfdom, Chicago.*

**Position wanted** as professional, for the winter only, with small club—will go anywhere. Single, age 23; highest references. Address: *Box 621, % Golfdom, Chicago.*

**Able and conscientious young professional**, well schooled in all phases of professional work and club operation, is anxious to make connection with golf club for winter and for 1931 season. Splendid education, pleasing personality and thoroughly on the job. Will furnish best of references. Address: *Box 622, % Golfdom, Chicago.*

**Professional**, 32, sixteen years' experience, desires to change for broader activities. Takes an active interest in teaching and shop service, also course maintenance if desired. Has a clean record; A-1 credit rating; am a hard worker and will give any club employing me 100% efficiency. References from former employers. Address: *Box 624, % Golfdom, Chicago.*

**Pro-Greenkeeper** — Scotch-American, 20 years' experience, general managerial capacity, wants position with medium-sized club. Efficient, trustworthy. References; wife capable caterer. Address: *Box 628, % Golfdom, Chicago.*

**Greenkeeper**—Married. American, age 34, would appreciate opportunity to serve as greenkeeper. High school education, originally farmed. Past five years in full charge 18 holes. Good references. Could call for personal interview; own automobile. Address: Box 623, % Golfdom, Chicago.

**Managing Steward**, ten years' successful experience at high-class clubs, desires new location. Will go anywhere. Excellent operator of clubs with exacting membership. References and surety bond furnished. Address: Box 626, % Golfdom, Chicago.

**Well-known Scotch professional** for eight years connected with prominent American club desires Northern situation. Highly successful instructor, thoroughly alive to club's best interests, and in every way qualified to give employers complete satisfaction. For full details and references write: Box 627, % Golfdom, Chicago.

**Young and thoroughly experienced** and successful professional desires position for winter only with a small club. Will go anywhere. Highest references, splendid personality and a real factor in business-building service to any club. Address: Box 625, % Golfdom, Chicago.

**Tree surgeon.** Competent young man with considerable experience in all kinds of tree surgery desires a steady connection with a country club or institution to take charge of tree maintenance. Satisfactory references will be furnished. Norman H. Beebe, 835 Hazel Ave., Ardley P. O., Pa.

## Advise GOLFDOM of Your Winter Address

GOLFDOM will appreciate receiving from greenkeepers, professionals and managers prompt advice of their new mailing addresses when they leave their clubs at the conclusion of the current season.

You don't want to miss a copy of GOLFDOM and we don't want to have a single issue fail to reach you, so we will both benefit from this co-operation.

GOLFDOM, during the coming winter months, will have a great array of articles on planning for the 1931 season—practical stories that will help every alert club department head make 1931 a banner year.

## LEONARD MACOMBER

*Golf Course Architect*

*Engineer, Contractor*

664 North Michigan Avenue  
CHICAGO



## ELM TREES

*Our New Plan for*

### EXTENDED PAYMENTS

Special offer to golf clubs will allow you to plant trees, shrubs and other nursery stock and pay for them out of income.

**Reforest Your Course**  
Our Elmhurst Elms are very rapid growers and soon grow into money.

**We Sell at Wholesale Prices**  
Pfund Bell Nursery Co.  
Elmhurst, Ill. (Chicago)

Producers of the  
ELMHURST ELM

## DOES YOUR GOLF COURSE NEED REMODELING?

We specialize in reconstructing courses for established clubs.

Courses Remodeled in 1929

BROOKWOOD C. C. . . . CHICAGO  
ORCHARD RIDGE . . . FT. WAYNE  
New Courses Built in 1929  
BEVERLY SHORES . . . MICH. CITY  
PRESTWICK C. C. . . ORLAND, ILL.

## National Golf Course Builders

202 South State Street, Chicago

## "GOLF COURSE BUILDING"

by Conrad Roser

### A Handbook

for Design and Construction

"Concise and Clarifying on Principles of Architecture and Construction."

"Excellent . . . full of common sense. I bought ten to supply my foremen."—C. G. Mackintosh, Landscape Contractor, Chrysler Bldg., New York City.

Handy—concise—complete for Greenkeepers, Professionals, Foremen, Superintendents, Contractors, Architects, College Graduates.

Fifty cents—Address Conrad Roser,  
Glastonbury, Conn.

Vol. 4

OCTOBER, 1930

No. 10

## TABLE OF CONTENTS

After First Cost There Is Maintenance Follow-Through. By Prof. L. S. Dickinson .....	13
Measuring the Manager to Fit the Club Job. By Henry R. Dutton.....	17
Mower Makers Are Behind Scenes Builders of Golf.....	20
California Coastal Mountains Invite Golf Growth. By Arthur Langton.....	26
Women's Business Calls for Pro Development. By Forbes Leith.....	36
Prowling Around in Pro Pastures. By Herb Graffis.....	42
Meat Buying and Preparing for Club Feeding. By Robert E. Love.....	55
Questions They Ask About Fairway Watering. By Wendell P. Miller.....	58

## INDEX TO ADVERTISERS

Adalink Chemical Co.....	64	Minton & Co., Inc., T. W.....	43
Arnco Culvert Mfrs. Assn.....	10	Murdoch Mfg. & Supply Co.....	64
Armour Fertilizer Works.....	5	National Golf Course Builders.....	67
Atkins & Durbrow, Inc.....	6	Nelson Mfg. Co., L. R.....	25
Billings & Spencer.....	1	Nitrate Agencies Co.....	4
Buckner Mfg. Co.....	26	Pacific Golf Equipment Co.....	31
Cardiff Green Marble Co.....	8	Page Fence Assn.....	7
Club Managers Assn.....	56	Pennsylvania Lawn Mower Co., Ins. Front Cover	
Converse Co., Inc., F. S.....	28	Pfund-Bell Nursery .....	67
Des Moines Glove & Mfg. Co.....	53	Pietzcker, Geo. S.....	29
Diamond Calk Tractor Co.....	64	Premier Poultry Manure Co.....	6
Economy Irrigation Co.....	62	Richmond Sod Cutter Co.....	62
Everson Filter Co.....	25	Roberts, Edw. G.....	2
Fate-Root-Heath Co., The.....	65	Roseman Tractor Mower Co.....	12
Flores Gardens, The.....	65	Roser, Conrad .....	67
Fort Shelby Hotel.....	60	Royer Foundry & Machine Co.....	23
Friend Mfg. Co.....	57	Scott Seed Co., O. M.....	4
Fulname Co., The.....	48	Sewerage Commission, The.....	62
Godwin, Hiram F.....	25	Spaulding & Bros., A. G.....	44-45
Goodyear Tire & Rubber Co.....	41	Springfield Lawn Sweeper Co.....	64
Governor Clinton Hotel.....	59	Stack, Tom .....	64
Granby Mfg. Co.....	53	Staudte Mak-A-Tractor Co., E. G.....	30
Graphic Score Book Co., The.....	65	Stumpp & Walter Co.....	30
Guaranteed Products Co.....	59	Toncan Culvert Mfrs. Assn.....	3
Horton Mfg. Co.....	39	Toro Mfg. Co.....	27
International Harvester Co.....	9	U. S. Golf Architects, Inc.....	57
Johnson, Mel .....	48	U. S. Rubber Co.....	Back Cover
Kemp Mfg. Co.....	62	Universal Sand Equip. Co., The, Ins. Back Cover	
Kewanee Private Utilities Co.....	2	Vestal Co., John H.....	65
Leach, B. R.....	10	Vulcan Golf Co.....	47
MacMillan Co., The.....	8	Willy, John .....	65
Macomber, Leonard .....	67	Wilson-Western Sporting Goods Co.....	37
McCullough Sons Co., The J. M.....	10	Worthington Mower Co.....	32-33
Miller & Associates, W. P.....	11	Young Co., L. A.....	49-50-51-52

Editor

HERB GRAFFIS

Eastern Representative  
ALBRO GAYLOR  
20 Vesey St., N. Y. City  
Tel. FitzRoy 8173

**Golfdom**  
The Business Journal of Golf

Copyright

Published 1st of each month  
236 North Clark St.  
Chicago, Ill.  
Tel. STATE 3160-1

Advertising Manager  
JOE GRAFFIS

Western Representative  
DWIGHT H. EARLY  
100 N. LaSalle St., Chicago  
Tel. CENTRAL 4158

Pacific Coast, HALLETT COLE, 846 S. Broadway, Tel. Vandike 7386, Los Angeles, Calif.

Forms close 20th of month preceding date of issue. Address all communications to home office. Circulation: A personally addressed copy of GOLFDOM is mailed free, each month, to the president, green chairman, greenkeeper, house manager and professional of every golf club in the United States, Cuba, Mexico and Hawaii. Please notify us at once of any changes in above offices, sending us the new names and addresses.



Let Universal Pulverize and Mix  
Your Compost---at Big Savings



Soft, velvety greens, better turf, and the end of a lot of unnecessary expense, grief and labor! Available to you through the many mixing advantages of the Universal. Finer pulverized, fluffier compost assures greater benefits in use; mixing it in 1/5 ordinary time, at a saving of 50 to 90 per cent in labor costs saves you many, many dollars for other needs.

Mail the coupon  
for the full story.

**THE UNIVERSAL SAND EQUIPMENT CO.**

1833 Columbus Road

Cleveland, Ohio

Dealers in Principal Cities.

UNIVERSAL  
COMPOST  
MIXER

THE UNIVERSAL SAND EQUIPMENT CO.,  
1833 Columbus Road, Cleveland, Ohio.

We're interested in knowing all about the UNIVERSAL.

NAME .....

CLUB .....

ADDRESS .....