

have found that where you are isolated and perhaps considerable time away from supplies, that it is a very wise provision. We have found that when you need equipment in summer you need it very badly. We have also equipped our mowing and cutting machinery with lights which enable us when the peak load comes to work at night. This very seldom occurs, but we find it necessary to be prepared in case of a tournament, the Fourth of July load, the Labor Day load, and other peak loads.

Keeping Dandelions Out

We have made an arrangement for dandelions by taking an iron bar about 20 ft. long, joining it three times, making it flexible, and attaching to this a mat of wire netting. We then lay a few sticks of wood across this and fasten them with copper wire. We hitch these behind the tractors and go over the dandelions. We believe our method is the most successful one for the treatment of dandelions. We run this on the fairways, through the rough, and all over the course, and if it were not from the seed blowing from our neighbors and from the highways, we believe that we could eliminate the dandelion entirely.

By An Eastern Green-chairman

ONE who has been for 10 years the green-chairman of a noted New England course tells GOLFDOM's readers of the headlights of his successful regime, asking that we refrain from using his name or that of his club. His interesting testimony runs:

Some years ago we began to establish turf nurseries which we have found very valuable. If a green shows signs of sickness our greenkeeper finds it more satisfactory as a rule to cut out the bad spots and replace with a few healthy sods rather than struggle with chemicals. We do use arsenate of lead and some other preventive measures at times, but with plenty of good turf in the nurseries we can, if necessary, returf an entire green during the playing season without seriously interfering with the play or incurring criticism from our members.

BUY THE



**BEST GOLF
SWEEPER**

*Ask Your Dealer
or write direct*

Springfield Lawn Sweeper Co.
Springfield, Ohio

Rust Proof Hole Rims

Only permanent, rust proof, perfect fitting hole rim made. Cast in one piece aluminum. Stays round. Self draining. Won't rust or corrode. Holds flag pole erect. Most economical rim you can use.



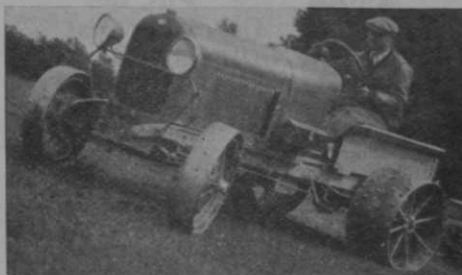
TEN DAYS FREE TRIAL

Write for circular describing this and other Standard Golf Course Equipment. Let us tell you how you can test on your own course free and without obligation.

Standard Manufacturing Company
Cedar Falls, Iowa



THE R. H. GOLF TRACTOR



Electric starter, battery, lights, shock absorbers, a silent (enclosed in oil) worm gear truck drive differential.

Better traction, round edges on wheels.

Write for Circular

R. S. HORNER

Geneva, Ohio

Manufacturer of square shoulder wheel spuds, golf wheels for Fordson Tractor and R. H. Golf Tractor.

**TO YOUR OWN CLUB BE TRUE
AND IT WILL FOLLOW**—that before ordering Charge Checks, Score Cards, Guest Registers, Caddie Cards and other forms you will first see our line of standardized golf printed matter.

JOHN H. VESTAL COMPANY
703 South La Salle Street - Chicago

DOES YOUR GOLF COURSE NEED REMODELING?

We specialize in reconstructing courses for established clubs.

Courses Remodeled in 1929

BROOKWOOD C. C. . . . CHICAGO

ORCHARD RIDGE . . . FT. WAYNE

New Courses Built in 1929

BEVERLY SHORES . . . MICH. CITY

PRESTWICK C. C. . . . ORLAND, ILL.

National Golf Course Builders

202 South State Street, Chicago

Charles E. Maddox in charge of construction.

Budd Blades

Will make your mowers run easier, cut better and last longer . . . Will cut tough weeds as well as grass . . . Will cut at any desired height . . . Will eliminate reel grinding and mower sharpening . . . No attachments or extra parts needed . . . Much cheaper in the long run . . . Ask your supply man or write us for descriptive price list.

The Budd Manufacturing Co.
Ravenna, O. P. O. Box F.



—and yardage indicators. Brilliant white porcelain lettering on lustrous porcelain black enamel; weather and rustproof. Used on America's leading courses. Lettered to conform with any distances and pars. Write manufacturers of LUSTERLITE Enamels.

CHICAGO VITREOUS ENAMEL PRODUCT CO., Cicero, Illinois

The Peerless Mower Sharpener

THE Peerless Lawnmower Sharpener

Grinds all makes of Power, Horse and Hand Mowers in 20 to 30 minutes, with razor-like edge giving any desired clearance or bevel.

Mowers run easier, require less power and gain in speed. One owner writes, "The Peerless Sharpener saves us from \$700 to \$800 annually."

Write for catalog and list of users.

The Fate-Root-Heath Co. 988 Bell St., Plymouth, O.



We find out the wishes of our membership by mixing with them and encouraging them to say what they like or dislike about the course. Sometimes their suggestions are good and sometimes unsound, so we do not make any material change in the playing area until we submit the ideas to the golf architect who first planned our course and who has supervised every alteration we have made.

Our finances are handled by an executive committee appointed by a board of governors. This committee is composed of the president, the treasurer, the chairman of the house committee and the chairman of the green committee and one other member of the board. We make up a budget based on the expenses of previous years and have frequent meetings to check up and see that we are not spending more than we can afford.

Study Markets

It is the duty of the green committee chairman to study markets for the seeds, fertilizers and tools which are needed and then in co-operation with the greenkeeper, to see that suitable materials are used.

We are fortunate in having a greenkeeper who handles his men well and keeps practically the same ones over long periods which, with good men, is a distinct advantage.

Any green-chairman who feels his responsibility to his fellow members must study and learn to keep up with all new methods, but should be very careful to avoid experiments on a large scale.

With good turf nurseries it is easy to try out in a small way some of the many suggestions available from the *Bulletin* of the U. S. G. A. Green Section, GOLFDOM and other publications devoted to the sport and business of golf.

First and last the men new to the job should learn to be patient with the members, the workmen and nature, not being too downcast when weather conditions are adverse nor too elated when the conditions are so favorable that the membership unite in praise of the work of chairman and greenkeeper.

Hyper-Humus

TRADE MARK REGISTERED

Recommended for topdressing greens. An ideal carrier for arsenate of lead, sulphate of ammonia, etc.

Write for particulars and prices.

HYPER-HUMUS CO., 51 Park Pl., Newton, N. J.

PIONEER GOLF & LANDSCAPE CO.

DESIGNERS Golf Courses BUILDERS

122 So. Michigan Ave., CHICAGO

Dealer Paper Promoting Golf Week

Next spring National Golf Week will be started by the same organization which instituted the annual National Baseball Week 11 years ago, *The Sporting Goods Dealer*. Date for the event has not been set. The idea of the drive is to "focus the attention of the entire country upon the health, pleasure and social features of the game." It is expected that the sporting goods dealers will tie into the event well, and C. T. Felker, editor of *The Sporting Goods Dealer*, writes GOLFDOM that co-operation in informing the pros of the event will be appreciated. He writes:

"We are convinced that the entire golf industry will benefit directly from a concentrated period of sales promotion and publicity at the opening of each new season."

All very nice. To all scribes of dealer papers we hope we make ourselves clear, that we are enthusiastically for anything that will promote the game. We just want to see that our side, the pros, get their good and deserved cut at the business.

A National Golf Week, staged at a time when the pro shops are opened and the season's dawn is upon us, ought to be a good thing. If it's staged too early, with the idea of beating the pros to the trade, it will defeat itself. The pros can play this pre-season game better than the dealers when they hop onto it in the manner of Jerry Glynn, whose curtain-raising act is described elsewhere in this issue.

THERE is no good reason why any green should exceed 8,000 square feet in size. If they are larger, the increased expense is out of all proportion to any real advantages.

ELECTRIC WORM ERADICATOR

Used on 700 courses; safe, dependable, economical. Write for folder. READE MFG. CO., 185 Hoboken Ave., Jersey City, N. J.

MILORGANITE

THE IDEAL TURF FERTILIZER

For further information address

SEWERAGE COMMISSION
508 Market Street Milwaukee, Wis.

ROTARY SOIL SCREENS

A necessity on every golf course for the proper preparation of

COMPOST TOP SOIL SAND

Several models for operation by hand, engine or tractor power.

WRITE FOR BULLETIN GD
F. S. CONVERSE CO., Inc.
Johnson City, N. Y.



Tractor Wheel Spuds

The R. H. wheel spuds save time installing and removing, they are made in many sizes for any type tractor or purpose. Low price and quality have been welcomed by Golf Clubs, in use on more than one-half the clubs in U.S. and Canada. Sample spud and circular on request; advise make of tractor and purpose used for.

(If your Ford or equipment dealer cannot supply, write direct.)

R. S. HORNER
GENEVA, O.
Manufacturer of Wheel Spuds, Golf Tractor, Golf Wheels for Fordson and Trucks.

Classified Ads.

Rates: 10 cents a word per issue. Minimum charge \$2.50

An advertisement in GOLFDOM saves the club officials time and money by getting responses from the best men available. The club department heads who advertise for positions in GOLFDOM obviously identify themselves as men who go after their problems in the right way. They are good men for you to give preference.

Course Equipment and Supply Salesman available for connection with reliable house. Well known and highly successful salesman, especially in central states territory. His knowledge of maintenance methods and technique has made his services in demand by greenkeepers and naturally helped his own sales record. Agricultural school graduate, with extensive and productive sales experience, five years of which have been concentrated on golf field. Hard worker; married, three children, but not one of those men who thinks he must make a long jump to be home over the week end. This man's sales work will pay any manufacturer who has a good product for the golf maintenance field. Highest references. Write for complete details of record and qualifications, and tell something about the proposition you have to make. *Address B-27, % Golfdom, 236 N. Clark St., Chicago.*

Professional wanted by 9-hole course in good town in Western Pennsylvania. Guarantee is only \$75 a month, but full shop concessions go with it; a live and competent young fellow who is on the job can make it really worth while to himself. Give complete details and references. *Address S-14, % Golfdom, Chicago.*

Man and Wife with long club experience. Woman splendid cook and house manager. Man fine player, successful instructor and greenkeeper. Excellent references. State details in first letter. *Address R, % Golfdom, Chicago.*

Professional golfer and wife desires positions with all year club. Professional having 12 years' experience, offering excellent references. Wife as club stewardess and general clubhouse manager. Pro and wife can take full charge of club. *Address: H-6, % Golfdom, Chicago.*

Professional Greenkeeper with ten years' experience, desires position with medium sized club. Married. Can furnish excellent club references. Good player and first-class instructor. *Address: G-5, % Golfdom, Chicago.*

Greenkeeper—14 years' experience. Capable of handling all kinds of soil and doing construction work. Ten years' experience with bent grass. Can furnish best of references. *Address: Box 16, % Golfdom, Chicago.*

Wanted—Steward and wife to take entire management of house and course. Fine new clubhouse. Do not need professional. Rockdale Country Club, Miami, Okla.

Professional—Married, 10 years' experience, desires position. Wife capable hostess and caterer if desired. Congenial couple. Best of references as to playing, teaching and greenkeeping ability. *Address J. B. E., % Golfdom, Chicago.*

Professional of exceptional ability desires position with first-class club any part of the country. Established reputation as teacher, player, gentleman. Highly recommended. *Address F-424, % Golfdom, Chicago.*

GOLF COURSES FOR SALE—In beautiful Pacific Northwest. Fine opportunity for professional to get on his own, or for business man who wishes to retire, yet keep occupied. Designed for public play. Large investment not required. Three courses for sale. Write or wire R. H. Dobell, 448 Finch Building, Aberdeen, Washington.

Scotch-American Couple—Can take full charge country club. Fifteen years' successful experience, management, service, instruction. References. Ready to move at once to suitable proposition. *Address: Manager, Box 1, Station "C," Brooklyn, N. Y.*

Pro-Greenkeeper desires position with good club, 25 years' experience. Expert instructor and clubmaker. Thoroughly reliable and dependable. Highest references. *Address X, % Golfdom, Chicago.*

Pro-Greenkeeper—34 years old, with 19 years' experience at golf courses, at present employed, desires connection mid-western club. Married, excellent instructor, wide experience in golf construction and maintenance; wife willing to serve as stewardess. *Address: F. J., % Golfdom, Chicago.*

Professional—Married, capable, expert instructor, greenkeeper and club maker now located at Newport Golf Club, Newport, N. H., desires position for winter or all year. Splendid references. Wife to manage house and cater if desired. Please write, giving full particulars. Personal interview if requested. *Address: J. Haeckel Cain, Newport Golf Club, Newport, N. H.*

This Helps Your Buying

Use this page to notify GOLFDOM of your club's requirements for course, clubhouse and pro shop, and you will get prompt and complete details from leading manufacturers.

*Check this page and mail it to GOLFDOM,
236 N. Clark St., CHICAGO*

Announcement boards

Architects—Course;
Landscape

Arserate of Lead

Awnings

Bags (golf)

Balls

Ball markers

Ball washers

Bath Slippers—Paper

Benches, tee

Bent stolons

Beverages

Bird houses

Brown patch preventives

Buffing Motors

Caddie badges

Caddie time clocks

Chickweed eradicators

Clubs

Club racks

Compost distributors

Compost mixers

Coolers, water

Discing machines

Dish washers

Display cases

Drags

Drainage engineers

Dryers

Dump carts

Electric systems

Fencing

Fertilizer

Fertilizer distributors

Flags

Flag poles

Fountain—Drinking

Furniture—Clubhouse,

Ground, Porch

Garbage incinerators

Handicap racks

Handicap eards

Harrows

Heating Systems—Clubhouse,
Water

Hedge trimmers

Hole cutters

Hole rims

Hose

Indoor putting surfaces

Insecticides

Kitchen equipment

Landscape material

Laundry equipment

Lawn sweepers

Linen

Lockers

Maintenance equipment

Mole traps

Mowers—Fairway, Green,
Rough, Tee

Mower blades

Mower overhauling

Mower sharpeners

Organizing service

Phonographs, automatic

Pipe—Drainage, Water

Playground equipment

Plumbing supplies

Pumps (shallow—deep—)

Putting cups

Refrigerators

Refrigerating Machines

Rollers—Fairway, Green,

Spiked

Score cards

Seed—Fairway, Green

Seeders

Shafts—Hickory, Steel

Shelters, Course

Shoes

Showers

Shrubs, Trees

Silverware

Sodcutters

Soda fountains

Soil screeners

Soil testers

Sprayers

Spreaders
(arsenate of lead)

Sprinklers

Sprinkling carts

Swimming pools

Tanks—Elevated, Gasoline,
Underground

Tea room equipment

Tee boxes

Tee markers

Tee umbrellas

Tees—Patented

Tennis court equipment

Tile—Drainage

Time recorders

Tractors

Trophies

Water softeners

Water systems

Water system engineer

Weed killers

Weed stingers

Worm eradicators

(PLEASE PRINT SIGNATURE AND ADDRESS PLAINLY)

Club

By

Position

Address

Date.....1930

Vol. 4

JANUARY, 1930

No. 1

Cover picture—Looking at a part of the \$7,500 Open at Spearmint Bill Wrigley's attractive Catalina G. and C. C. Joe Fishel is pro here and J. H. Beasley, manager. It's a fine resort course, rather short but interesting to play.

(P. and A. Photo.)

Editorial Contents

Golfers Fight for Tax Relief.....	13	Drainage Revives Rundown Course—By Edward Stroud.....	36
Veterans Give New Green-chairmen Help.....	14-15	Machine Maintenance in Course Design—By Harold Paddock.....	42
Pros Prepare for 1930 Advance—By Alex Elrie.....	18	Paris Green, Pro's Remedy for Club—By Jack Fulton, Jr.....	48
Green Section Meets at New York, Jan. 10.....	20	Pro Profits—By Herb Graffis.....	52
Greenkeepers Plan 1930 Congress—By John Morley.....	25	Greenkeepers Set for Louisville Meeting.....	56
Smile, Sweat, Study, Glynn's Tip—By Herb Graffis.....	27	Wisconsin U Plans Greenkeeping Course.....	61
Handling Irate Members—By Jack Fulton, Jr.....	29	Apply Today's Good Business Methods.....	63
Buy Product Plus Dealers' Help—By B. R. Leach.....	32	Wilson Western Announces Pro Campaign.....	64

Advertisers' Index

Allerton House.....	65	National Golf Co., The.....	55
American Seed Co.....	66	National Golf Course Builders.....	72
Armco Culvert Mfrs. Assn.....	10	National Mower Co.....	10
Baylis.....	50	Nelson Mfg. Co., L. R.....	69
Bean Mfg. Co., John.....	8	Orr Irrigation Co.....	66
Bradley & Baker.....	63	Paddock, Harold D., Inc.....	68
Buckner Mfg. Co.....	63	Pennsylvania Lawn Mower Works.....	Inside Front Cover
Budd Mfg. Co., The.....	72	Philadelphia Toro Co.....	Inside Back Cover
Carrier, Inc., Lyman.....	65	Piccadilly Hotel.....	70
Chicago Vitreous Enamel Corp.....	72	Pioneer Golf & Landscape Co.....	73
Converse Co., Inc., F. S.....	63	Prizer Mfg. Co.....	65
Davis, Inc., Geo. A.....	76	Reade Mfg. Co.....	73
F. & N. Lawn Mower Co.....	9	Reading Iron Co.....	7
Fate-Root-Heath Co., The.....	72	Roseman Tractor Mower Co.....	12
Friend Mfg. Co.....	62	Royer Foundry & Machine Co.....	11
Fulname Company, The.....	51	Scott Seed Co., O. M.....	8
General Chemical Co.....	67	Sewerage Commission, The.....	73
Granby Mfg. Co.....	53	Springfield Lawn Sweeper Co.....	71
Graphic Score Book Co.....	70	Standard Mfg. Co.....	71
Hartmann-Sanders Co.....	69	Straude Mak-A-Tractor Co., The E. G.....	10
Horner, R. S.....	71-73	Stump & Walter Co.....	6
Hyper-Humus Co.....	72	Thompson Mfg. Co.....	35
Ideal Power Lawn Mower Co.....	21-22-23-24	Toro Mfg. Co.....	57-58-59-60
International Harvester Co.....	5	U. S. Golf Architects, Inc.....	63
Jacobson Mfg. Co.....	43	U. S. Rubber Co.....	Outside Back Cover
Kemp Mfg. Co.....	69	U. S. Golf Mfg. Co.....	49
Kewanee Private Utilities Co.....	6	Vestal Co., John H.....	71
Koppers Products Co.....	45	Wanamaker, John.....	55
Leach, B. R.....	70	Ware Co., Walter F.....	62
Lewis Co., G. B.....	51	Willy, John.....	70
Lord & Burnham Co.....	39	Wilson-Western Sporting Goods Co.....	46-47
McCullough Sons Co., The J. M.....	67	Worthington Mower Co.....	40-41
Miller, Wendell P.....	37	Young Co., L. A.....	1-2-3-4

Editor
HERB GRAFFIS

Eastern Representative
ALBRO GAYLOR
20 Vesey St., N. Y. City
Tel. FitzRoy 8173

Golfdom
The Business Journal of Golf

Copyright

Published 1st of each month
236 North Clark St.
Chicago, Ill.
Tel. STate 3160-1

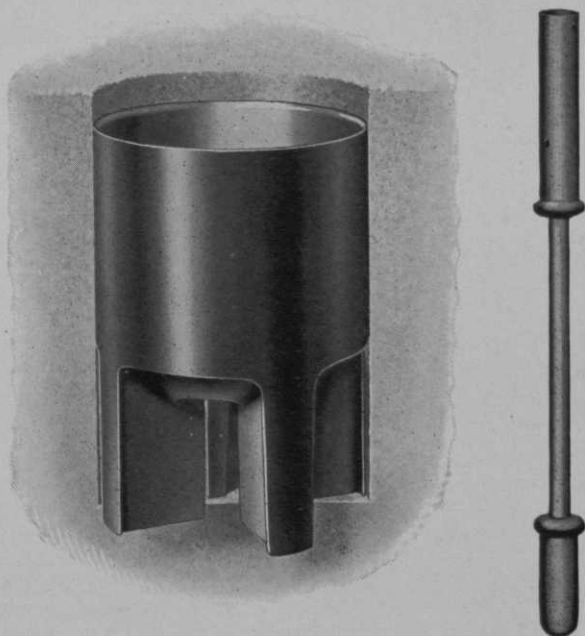
Advertising Manager
JOE GRAFFIS

Western Representative
DWIGHT H. EARLY
100 N. LaSalle St., Chicago
Tel. CENTral 4158

Pacific Coast, HALLETT COLE, 122 E. 7th St., Tel. Trinity 1793, Los Angeles, Calif.
Forms close 25th of month preceding date of issue. Address all communications to home office, Chicago.

Circulation: A personally addressed copy of GOLFDOM is mailed free, each month, to the president, green chairman, greenkeeper, house manager and professional of every golf club in the United States, Cuba, Mexico and Hawaii. Please notify us at once of any changes in above offices, sending us the new names and addresses.

"Drainwell" Golf Cup and "Hole in One" Pole End



Free Drainage—Always Dry

Even with the flag pole in place, the water runs out of the cup, and drains away **at the sides** as well as the bottom. This is an exclusive feature of the "Drainwell." Cups are dry after the daily sprinkling, or even after a heavy rain.

Flag Easily Inserted—Rigidly Held

The bottom of the cup is cone shaped, and the flap pin automatically finds the hole. It can't be wrongly inserted. The lower portion of the cup rigidly holds the flag socket in vertical position, without depending on the ground for support.

More Approach Shots Sunk

With the flag in position, there is plenty of room between the edge of the cup and the flag pin to allow the ball to drop, thus improving the chances of sinking approach shots and making "holes in one."

Send for information on these other Fletcher-built Golf Specialties—"Crown" Tee Marker; Roller Bearing Green Roller; Practice Green Marker

Sole Distributors

PHILADELPHIA TORO CO.

1528-32 Belfield Avenue

Philadelphia, Pa.