

# Bent Grass Seed

DIRECT FROM THE FARMS WHERE IT GROWS

For eleven years I have annually increased my acreage of Bent grass for seed production. Some of the finest turf of this nation has been produced by planting my Bent Seed on putting greens and fairways of golf courses, athletic fields, tennis courts, bowling greens, municipal parks and lawns surrounding some of the finest homes of our country.

Read what Mr. E. H. Brock, vice-president of the John Hancock Life Insurance Co., says of the results produced from the use of my seed on the famous Brae Burn Greens:

*"Seed which you have furnished the Brae Burn Country Club during my administration as Chairman of the Greens Committee has always been satisfactory, more so than seed which we have purchased elsewhere, and last year was no exception."*

*"You know that we had the National Amateur Championship, and regardless of the fact that the event was scheduled the third week in September, our greens were in excellent condition. No. 11, I think, is the best green in America, but it is strictly Velvet Bent. I personally feel that you have furnished us the best seed we have ever bought."*

Right now we are going full tilt. We don't know anything about union hours, Saturday Afternoons, Sundays or Holidays off. Now at the harvest time it is ten hours a day, seven days a week or no job. My threshing and cleaning apparatus are now running full chisel to keep up with the boys in the fields who are mowing and curing the Bent hay. We are now filling orders that we have on hand from many golf clubs for

## RHODE ISLAND BENT, CREEPING BENT AND VELVET BENT SEED

*Place your order now for fresh, viable seed that is coming right from the fields. Save the middle-man's profit and don't run the risk of getting old unacclimated seed of foreign origin.*

I have had a great deal of experience in furnishing seed for fine turf production throughout the northern tier of states. There is no one variety that is a sure "cure all" in all localities. I always endeavor to furnish those varieties of Bent that from experience have been found to do the best in the locality where the seed is to be used.

No fields of Bent are harvested by me unless they run 98% or better as to purity of stand in the field.

When you purchase seed direct from the farms where it grows, you are assured not only of an absolutely fresh, viable, winter hardy product but you are also assured of a seed that is true to name as it is humanly possible to grow it.

Is  
Bent  
Just  
Bent  
To  
You?

Always  
Demand  
Native  
Grown  
Seed  
That Is  
Winter  
Hardy  
and  
Accli-  
mated  
To Our  
Severe  
Northern  
and  
Eastern  
Climate

# A. N. PECKHAM

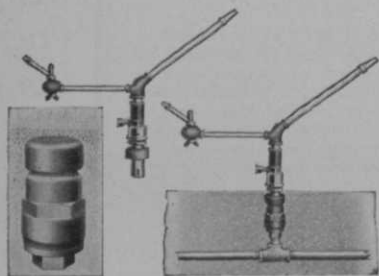
Kingston

Rhode Island

The advertisers pay for your GOLFDOM; deal with them.

## A Full Inch of Water With This New Quick Coupling Valve

For modern, hoseless systems, the new Economy Quick Coupling Valve is a boon to better water distribution. It is a true valve, not a snap valve, and allows full water passage. Its seat is leather, non-leaking, easy to replace. The opening and closing operation is positive—and no hose to buy.



Economy Sprinklers take care of every sprinkling situation, making every water system entirely adequate. They are economically and efficiently aiding the greenkeepers on half the golf courses of this country and Canada. Simple and rugged, there is an Economy Sprinkler for every need—for quick coverage, large and small coverage, for low and high pressure water systems.

Write for the name of our agent nearest you. He can give you demonstration and some worthwhile information.

**ECONOMY IRRIGATION CO., Inc.**  
21 Spokane St. Seattle, Wash.

Distributors in Leading  
American and Canadian Cities

*On almost half the golf courses in the U.S. and Canada*

# ECONOMY SPRINKLERS

The size of the particles has another important function in the soil. It determines the extent of the internal surface of the soil. The retentive power of soils for water is determined primarily by the extent of their internal surface. The plant food ingredients are absorbed by the surface of the particles or by forces governing surface reactions.

The soil particles, large or small—from gravel to clay—do not exist in the soil as independent units. The various particles are intermingled forming what we know as the type of soil. The individual particles within each type also coalesce, forming typical aggregates, and this property of the soil is known as structure. The form and shape of the structure of aggregates differ for various soils. There may be a crumbly structure, granular, nutty, prismatic, columnar, and the shape of this varies with the type of soil, condition of moisture and temperature. Soil structure is intimately related to soil texture. The texture in turn determines the weight of the soil.

The specific gravity of soils will differ according to the composition of the soil. As there are not many common minerals more than three times as heavy as water and not many lighter than 2.5 times as heavy, the specific gravity of soil grains will lie between these two figures. The presence of humus will decrease the specific gravity. The following gives the specific gravity of soil constituents: water, 1.0; humus, 1.2-1.5; clay, 2.5; quartz, 2.62; feldspar, 2.5-2.8; talc, 2.6-2.7; calcite, 2.75; dolomite, 2.8-3.0; mica, 2.8-3.2. In soils we do not determine the true specific gravity but the apparent specific gravity, taking the volume of the soil as it is with the pore space in it. The apparent specific gravity of an average soil is about 1.2 and a cubic foot of it will weigh about 75 pounds; a cubic foot of water weighs 62.32 pounds. A sandy soil consisting of a lot of quartz will weigh more than a clay soil which has in its makeup the substance with a lower specific gravity.

Another important physical aspect of soil properties is the moisture regime. Three forms of water may be considered: 1. hygroscopic, 2. molecular, 3. gravitational.

### Capillary Movement

The porosity of the soil is responsible for much of the most important phenomena in the moisture of the soil, namely, the capillary movement. Capillary moisture

moves faster in wet soils than in dry soils. Thus when a soil is dry at the surface, small rains induce more rapid moisture evaporation from the lower layers by establishing the capillary contacts. Mulching of soil after small rains serves the purpose of breaking up capillary rise. Superficial sprinkling of lawns or any grass sod will do the same thing as small rains do to soils, namely, exhaust the moisture from the lower layers.

The fate of the water coming in the form of rain is extremely interesting. Part of it is absorbed by the soil, part goes down to the ground waters and the rest is shed from the surface known as "surface run-off." The soil type will determine the disposal of the rain in the relative proportion of the respective portions. A sandy soil will allow a larger percolation portion as compared with a clay soil; the surface run-off will be higher on a clay soil, etc.

The depth of the ground water, or as we know it, the water table, is an important consideration in the study of soil moisture. The level of the water table is not constant, especially in humid regions. Deep rooting plants will do well on a soil with a high water table. The grasses as a rule do well on such soil.

Another important physical property of the soil is its temperature. The temperature of the soil varies with the periodical fluctuation of the sun's radiation, fluctuations of the air, temperature; it depends on the heat properties of the soil constituents, heat capacity of soil, color, structure, texture, exposure, etc.

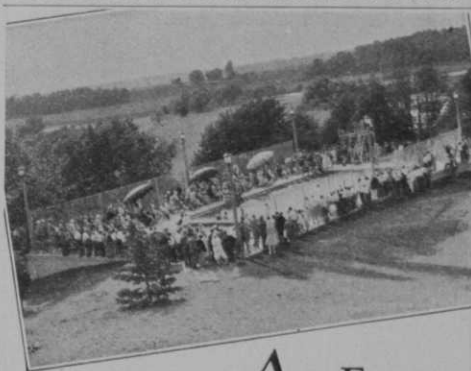
An essential feature of any soil is the capacity to hold air and other gases, and permit their circulation.

The quality and quantity of soil air differ from that just above it. There is more carbon dioxide in the soil air, a little less oxygen. The composition of the soil and the process taking place in it will determine to a certain extent the quality and quantity of gases.

Among other physical properties of the soil mention should be made of its stickiness—forces with which the particles are held together, plasticity—the property to maintain a definite form. These are determined primarily by the relative proportion of the various soil fractions.

The physical properties of the soil may be summarized as those which control the moisture, air and temperature of the soil, or as we call it, the aero-hydro-thermal condition of the soil.

## EVERSON SWIMMING POOLS



### An Everson Pool makes a Country Club of any Golf Course

THERE'S nothing more invigorating than a refreshing plunge after a baking 18 holes. Nothing that will be more appreciated by golfers than a good swimming pool right at the Club. No other accommodation that will so effectively bring the whole family out day after day. A well appointed swimming pool goes a long way toward making a true Country Club of any Golf Course.

Pools that are properly designed, built and managed usually prove an excellent investment for Golf Clubs—paying actual profits in operation. EVERSON Pools, with the Everson Water Purifying System, are always popular, for the water is always clear, sparkling, of drinking purity.

Much informative data has been compiled for distribution to officials of Golf Clubs which will be sent if requested.

## EVERSON FILTER CO.

Swimming Pool Design, Construction,  
Equipment, Maintenance

648 N. Green St.

Chicago, Ill.

### Top and Bottom—

The Everson Equipped Pool of the South Bend (Ind.) Country Club.



# FRANKEN'S

*for expert help in  
course beautifying*



A COURSE and clubhouse ground beautifying plan is a vital part of the first-class golf club's operation. Franken Brothers' extensive and intimate experience with greenkeepers and green-committees that have been notably successful in this work qualify us to serve your club to your complete satisfaction.

The finest of bulbs, shrubs and other landscaping material and expert, conscientious service to help you with your plan and your planting make the Franken Brothers' proposition interesting to every golf club.

Write us about your landscaping problem.

**FRANKEN BROTHERS, Inc.**  
DEERFIELD, ILL.

## LEONARD MACOMBER

*Golf Course Architect*

*Engineer, Contractor*

664 North Michigan Avenue  
CHICAGO

## WELCOME to NEW YORK and The HOTEL GOVERNOR CLINTON

31<sup>ST</sup>. ST. AND 7<sup>TH</sup>. AVE.  
opposite PENNA. R.R. STATION



1200 Rooms  
each with  
Bath and  
Servidor

ERNEST G. KILL  
Gen. Mgr.



ROOM AND BATH 3<sup>00</sup> UP

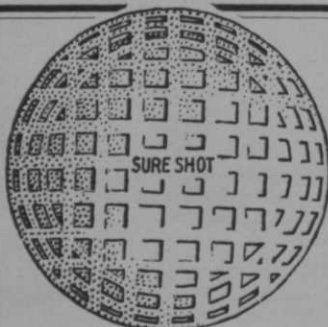
## Golf Shelters by Hartmann-Sanders

Hundreds of quaint and unique designs made especially for golf courses! Prices are very moderate. Send for catalog, number 39, which is profusely illustrated with Hartmann-Sanders Golf Shelters, Rose Arbors and Trellises. Hartmann-Sanders Co., Factory and Showroom: 2183 Elston Avenue, Chicago. Eastern Office and Showroom: Dept. O, 6 East 39th Street, New York City.



### HARTMANN-SANDERS

Pergolas Colonial Entrances Koll Columns  
Rose Arbors Garden Equipment



New GOLF BALLS \$15.<sup>00</sup>  
No Repaints or Seconds Per Gross

For Driving Fields and Miniature Courses

COLORADO GOLF BALLS \$24.<sup>00</sup>  
Red—Green—Blue—Orange Per Gross

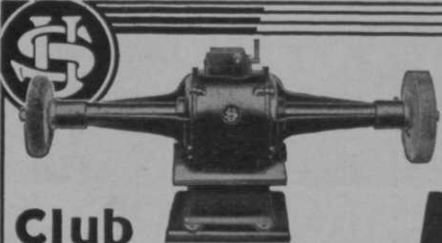
PUTTERS ..... \$1.00 Each

All Other Style Clubs. Prompt Shipments.  
Terms—One-third with order, balance COD.

**G. A. SULLIVAN & CO.**

218 So. Wabash Avenue Chicago, Ill.

We also have BATHING SUITS, CAPS, etc., for Swimming Pools. Write for Prices.



**Club Polishers**

Rugged U. S. polishers embody powerful motors of 3450 R.P.M.; heavy duty ball bearings in dust-proof, grease-tight boxes, etc. Cable, plug furnished.

(Wheels, as desired, extra.) Specify A.C. or D.C., voltage and cycle when ordering from your jobber or direct from—

**The United States Electrical Tool Co.**

2459 West Sixth St.  
Cincinnati, Ohio

**\$99**

# COCOOS

## Bent

# SEED

order now  
for fall  
planting

≡ finer texture  
≡ richer color  
≡ grows where  
other turf dies

write for  
free booklet



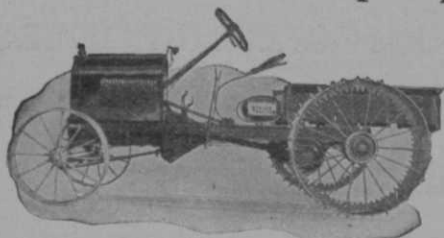
**LYMAN CARRIER CO.**

Plant  
Granger, Ind.

Office  
Willoughby, O.

KEEP  
IN  
STEP  
WITH  
THE  
TIMES

Apply Efficiency to  
Golf Course Upkeep



The Staude Golf Course Tractor  
is Efficient and Economical

**\$475** and **WRITE** for  
upward details

**E. G. STAUDE MAK-A-TRACTOR CO.**  
2696 University Ave., St. Paul, Minn.

**B. R. LEACH**  
RIVERTON, N. J.

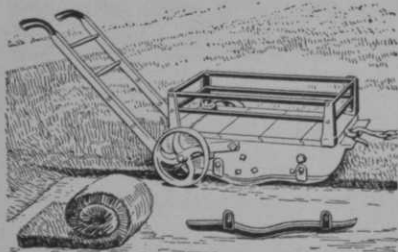
**Consulting Turf  
Specialist**

(Originator of the lead  
arsenate treatment of turf)

for  
**GOLF COURSES**  
and  
**PRIVATE ESTATES**

Study, diagnosis and conditioning  
recommendations. Special attention  
given to grub, earthworm and weed  
control.

Write for details of time available  
and terms.



## THE RICHMOND SOD CUTTER

**YOU'LL** do a neater job of sodding with this profitable time and labor saving sod cutter. Cuts a strip 14 inches wide; adjustable, uniform thickness; any desired length. Cut with the Richmond Sod Cutter you get a smoother, firmer turf, especially on embankments. Can be drawn by either horse or tractor.

This speedy sod cutter truly pays for itself in one day of use—write us today for details—comes complete, ready for use, \$35. F. O. B. Richmond.

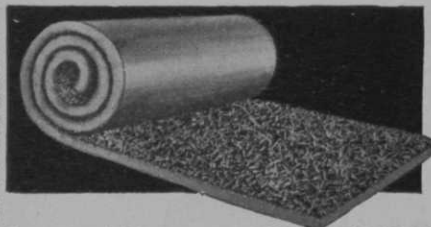
**RICHMOND SOD CUTTER CO.**  
Richmond, Indiana



### SOIL ORGANIC FOR GREENS

Natural soil improver—water holder—soil bacteria developer—fertilizer liberator. Safe—clean—neutral—odorless—pleasant to use. Write for our special suggestions to greenkeepers. Informative literature free.

**HYPER-HUMUS CO.,** 51 Park Pl., NEWTON, NEW JERSEY



## Buy Your GREENS READY-MADE

### Laid Down Like a Carpet

Hundreds of golf and country clubs, greenkeepers, landscape architects, homes, etc., utilize Illinois Grass Co.'s True Washington Strain Creeping Bent in solid turf form. Furnished in rolls ready to lay down like a carpet. Our solid turf has the reputation of being extremely hardy and uniform in texture. It is mowed with a putting green mower and is hand-weeded. Guaranteed to grow vigorously into a rich, green, velvety lawn if properly cared for. Furnished in stolons, also.

#### Give Your Members a "Break"

Do your members pay dues and assessments to play on temporary greens and tees for half the season? After your remodeling is completed, use Illinois Grass Company's prepared sod, and you are ready to play on your regular greens in a week or less.

Write today for prices, samples and facts about our unusual service  
**ILLINOIS GRASS CO., Dept. 580**

J. A. Carter, Sales Agent  
75 E. Wacker Drive, Chicago  
Phone Central 8074

**NURSERIES**  
18455 Reigel Road, Homewood Ill.  
Phone Homewood 746

## Finer Greens... and at Less Cost

**I**DEAL top dressing is not only free from stones and lumps but rich in humus. The KEMP, by shredding soil before sifting, keeps almost all this necessary fibre in the soil, and removes all stones and lumps.

You can save from one-third to one-half the cost of labor with a KEMP Power Soil Shredder, just as hundreds of other clubs are doing.



No. 2 Model  
with Sifter  
Attachment

Talk over the facts with your greenskeeper. Write us for testimonials and illustrated catalog. KEMP MFG. CO., Dept. C, 2001 Peach St., Erie, Pa.

Prompt Shipment from Warehouse Stock in Leading Centers

**KEMP POWER SOIL SHREDDERS**



One of the smaller machines at work

## "FRIEND" GOLF COURSE SPRAYERS

Large—Medium—Small

To protect putting greens, fairways, trees, and shrubs against Brown Patch, Grubs, and all diseases and pests. A rapid and economical method of applying liquid fertilizers.

**"FRIEND" MFG. CO., Dept. G**  
GASPORT, N. Y.



# Planning Menus That Make Club Famed for Food

By ROBERT E. LOVE

THE planning of menus for golf club food service is one of the most important as well as one of the most difficult aspects of the club food department. Successful menu making is now a science as well as an art, especially so in the golf club restaurant. The club steward should study the psychology of human behavior, and learn to anticipate the desires and requisites of the people who might visit his dining room. He must always bear in mind the fastidious and high class patronage of the golf club restaurant, and should arrange his menu accordingly. Here again it may be emphasized, as in the previous articles of this series, that the best quality and only the best quality foods should be served at all times.

From the standpoint of the patron, the appearance of the menu, and its effect in bringing about a genuine desire for the dishes thereon described, is the important item for consideration. A neat, clean, and attractive menu is very essential for a successful restaurant business. There is nothing that can start a meal off in the wrong way any quicker than a soiled and worn-out menu. Fresh, immaculate, and artistic menus start the patron off in the right frame of mind. Next, the bill of fare must be cleverly but clearly arranged, so that the guest experiences no trouble in finding what he wants. Special items should be described with the proper size and type of printing. Soft color tones and combinations with the surroundings can be worked out to advantage. Depending on the type of club and service in vogue, the personal touch and appeal may be inculcated quite successfully in the menu.

## 15 Points of Menu-Making

From the standpoint of the club steward, he strives to draw up his menu in such a manner that it will result in the greatest satisfaction to the patrons, coupled with a reasonable profit according to the policies of the club. In the planning of menus there are fifteen important points for consideration as follows:

1. Type of clientele.
2. Style of service.
3. Raw food cost.
4. Simplification.
5. Attractiveness—appeal.
6. Seasonable foods.
7. Proper use of left-overs.
8. Dietetic balance.
9. Contrast between courses.
10. Temperature—hot and cold foods.
11. Texture — hard, soft, whole, or minced.
12. Flavor—bland or highly flavored.
13. Variety in preparation as to form, broiled, etc.
14. Pleasing color schemes.
15. Division of labor.

In consideration of the first point, "Type of Clientele," it will suffice to say that the patrons of the country club dining rooms are used to the best quality foods, delightfully prepared and served. Therefore the steward must ever strive to serve the best of quality foods, deliciously prepared.

The "Type of Service" in vogue at the club has much to do with the drawing up of the menu. If the service is a la carte, it calls for one type of menu, and if table d'hôte, special luncheons or dinners are served, the menu will be arranged in a different manner. The "Raw Food Cost" is important, but as has been emphasized before, it is not the dominating factor in food selection. The all-important item in club food buying is intelligent and economical purchasing of quality foods. Never permit a few cents difference in price trip you into the disastrous practice of serving inferior quality foods. It is well to always bear in mind that QUALITY and SUCCESS are inseparable companions.

## Simplify the Menu

Many of the larger dining rooms and restaurants throughout the country have a menu with plenty of variety due in part to the many different types of patrons which frequent these public eating places. How-

ever, since the clientele of the golf club restaurant is composed mainly of one class of people, variety in the menu is not so essential. In fact, simplification of the club menu according to the wants of that particular type of patronage will result in larger, easier profits and better satisfaction to all concerned. The "attractiveness of menus" was considered above, and too much stress cannot be put upon this important point. The menu should be so drawn up that it causes immediate attention and creates a genuine desire on the part of the guests for the food products thereon described. The use of foods "in season" is both economical and good practice. As for example when strawberries are ripe in a certain locality, people expect fresh berries to be featured in various forms in the menu. It always pays to be honest in every way with your patrons, and when foods are fresh, say so, and if food is canned, do not serve it as "fresh" food. The menu should be drawn up with an intelligent idea as to how the left-overs may be disposed of. As much of the left-over food as possible should be used the following day, cutting the waste to a minimum, always, however keeping the high standard of best quality food products at all times. The modern age has brought science into menu planning, and "dietetic balance" comes in for its share of consideration, with the selection of food combinations with the proper ratio of vitamins, fats, carbohydrates, and so forth.

### Happy Medium in Menus

There should be a distinct "contrast" between courses, which tends to make the dinner more enjoyable and appetizing. For instance, if a fruit cocktail is served, a fruit salad would not be in order on the same menu, but a vegetable or some other type of salad should be substituted. The "temperature" of foods is an item of especial importance, in golf club food service. As the players come in from a hot round of golf, they are tired, thirsty, hungry, and have an appetite as keen as a whistle. If they ask for a cold meat plate and some cold drinks, be sure that the food and liquid is ice cold, serving them in dishes chilled in the refrigerator or in ice. If hot orders are requested, make positive that the foods are served piping hot on hot dishes. There is nothing quite as bad as warm orange juice, or a cold steak, and the like.

There should be variety in the texture of the food served. There should be a con-

trast on the menu between hard and soft foods, and whole and minced foods. The flavor of the food should be carefully watched and checked, and the dishes should not all be highly flavored, or all mildly flavored. A happy medium should be struck between the bland and highly flavored foods. The flavor should be evenly distributed throughout the product, and not just on "top" or in parts.

There should be good variety in preparation as to form, whether broiled or fried and the like. As if cream soup is on the menu, it is not good practice to serve creamed potatoes on the same bill of fare. Likewise if creamed potatoes are on the menu, you would not serve creamed onions on that setup. Pleasing color schemes are very essential to a well planned menu. Many otherwise perfect dinners or luncheons are ruined simply because of poor color combinations, or no color at all. The beginning and ending of the meal, or what is commonly known as the cocktail and dessert are two of the most important items on the menu. If a dinner is started right and finished right, it is usually bound to be successful.

Therefore, it is well to have a dash of color in the cocktail, and this accomplishes two purposes in the fruit cocktail supreme. In this set-up a large glass tumbler is filled with ice and a drop of liquid coloring matter either red or green is added which turns the ice to a brilliant color. Then the cocktail proper is set in the tumbler on a polished metal holder, and thus the cocktail is both very attractive and also icy cold when served. A fresh sprig of green parsley and a piece of bright yellow lemon cut fresh should garnish the fish dishes. Vegetables of different colors should be used wherever possible, and when feasible always avoid using two foods of the same color on the same plate. A few bits of diced carrots will greatly add to the appearance of a cabbage salad. A bright red candied cherry will decisively augment the attractiveness of a half-grapefruit or sliced oranges.

Last, but by no means least, is the problem of division of labor. This item is often overlooked, and may cause serious disaster in the food service. The menu should be planned with a view to the division of labor in the kitchen—that is just how much time the various dishes will require, the number of workers required for the different tasks, the skill necessary, and lastly the equipment on hand. Do not put



# U. S. GOLF ARCHITECTS

INCORPORATED

DESIGNERS and BUILDERS

WE SPECIALIZE IN REMODELING COURSES

310 SO. MICHIGAN AVE.  
CHICAGO

STANLEY F. PELCHAR  
*Golf Architect*

JAS. J. PRENDERGAST  
*Consulting Engineer*

OTTO CLAUSS  
*Landscape Architect*

anything on the menu which your kitchen force with its equipment on hand, cannot prepare right and on time.

Proper menu making is an art, a science, and an asset. Years and years of persistent study are usually necessary before an operator can make out an attractive, well-balanced, satisfying, and profitable menu each day of the year. However, if the club steward or chef, or whoever has charge of the menus will consistently study his menus and his clientele, noting and correcting the flaws, ever striving to serve the best quality foods in the most delicious as well as the most economical manner possible, success is certain.

## 1.68 TEES REWARD ACE SHOOTERS

NEW YORK CITY—Premier Sport Products Co., 121 West 17th st., is adding four boxes of its popular "New 1.68" tees for makers of aces. The tee is made especially for the new ball, with a longer shank and a concavity in the head of the tee of the same arc as the 1.68 ball.

An attested copy of the score-card showing the ace should be sent to Premier by those entitled to the award.

WATER the greens before starting to weed by hand. The plants pull out easier and more completely from a wet soil than from a dry soil.

\* \* \*

POST on the bulletin board in the locker room a sign telling the members at what hours on week-ends congestion is worst at the first tee. With so many hours of daylight in summer, there is lit-

tle reason to start play during rush periods; a little publicity in the matter will spread play over a longer interval and make things more pleasant for everybody.

\* \* \*

UNLESS you are prepared to keep a water hazard in good clean condition, fill it up and cultivate rough or put a sand trap there instead. Nothing is worse on a golf course than a scum-filled pond of stagnant water.

## A Better GOLF SWEEPER

Sweeps clean—Reduces labor.  
One man does the work of five.

Ask Your Dealer or

Write Us Direct

Springfield Lawn Sweeper Co.  
Springfield, Ohio

Also makers of tractor drawn sweepers



## Racks HANDICAP Cards

John Willy Handicap Racks and Cards are standard with practically all the leading American golf clubs. Write for booklet.

JOHN WILLY, 443 South Dearborn Street,  
CHICAGO, ILLINOIS

## —COUPON SCORE CARDS—

MEDAL PLAY TOURNAMENT CARDS  
MATCH PLAY TOURNAMENT CARDS  
GRAPHIC HANDICAPPING CARDS  
TOURNAMENT RECORD BOOKS

Write for Descriptive Circulars

THE GRAPHIC SCORE BOOK CO.  
100 Main St., Park Ridge, Ill.

# From all points of the Golf Market compass—

"GOLFDOM is a very valuable publication for both Green-chairmen and Greenkeepers. It has proven of great value to me because, several years ago when I became chairman of the greens, I had no previous experience in this capacity and GOLFDOM has proved a god-send to me."

New York

"I have always found GOLFDOM to contain very interesting articles, pertaining both to grass culture, upkeep and maintenance of the course as well as country club operations and management."

St. Louis, Mo.

"I find GOLFDOM of considerable interest and carefully read through the articles and advertising in every issue."

Cleveland

## —the needle points to GOLFDOM

**NEW!** The new Tension Plate on the Budd unit permits extremely short cutting where desired. See coupon offer below.



### Revolutionize YOUR Mowing Job

Budd gives you four times the service of ordinary blades. Cleaner, faster, more economical cutting. No sharpening, no lay-ups. Fits any make mower. Try it—NOW at our expense.

#### MAIL NOW FOR FREE TRIAL OFFER

THE BUDD MFG. CO., Dept. G, Ravenna, Ohio. Send full details, without obligation, of your FREE Trial Offer on the Budd Blades.

NAME ..... POSITION.....

CLUB .....

ADDRESS .....

## Miniature Course SCORE CARDS

Now Available in  
3 Colorful Styles

The Same Quality is Maintained that is found in our regular score cards used by hundreds of Golf Clubs throughout the country.

Samples gladly sent

JOHN H. VESTAL CO., Printers  
703 South La Salle Street - Chicago

## DOES YOUR GOLF COURSE NEED REMODELING?

We specialize in reconstructing courses for established clubs.

#### Courses Remodeled in 1929

BROOKWOOD C. C. . . . CHICAGO  
ORCHARD RIDGE . . . FT. WAYNE

#### New Courses Built in 1929

BEVERLY SHORES . . . MICH. CITY  
PRESTWICK C. C. . . ORLAND, ILL.

## National Golf Course Builders

202 South State Street, Chicago  
Charles E. Maddox in charge of construction.

When you mention GOLFDOM the advertiser knows you mean business.