

Leading Greenkeepers report

No Trouble with BROWN PATCH

when Semesan or Nu-Green is used

For hundreds of greenkeepers, the problem of brown patch control is no problem at all. The November *National Greenkeeper* gave the experiences of a number of greenkeepers in combating brown patch, among them John M. Coutre, Indian Hills Country Club, Winnetka, Ill. He reported:

"This was the most successful season I have had in the control of brown patch. In all our nineteen greens there has not been a single spot of brown patch. I have tried various ways of controlling the disease and my only and most successful method is to soak my greens good once a week, preferably at night, and on the following day I give the greens a shot of Semesan. I was not bothered with any other diseases at all."

In the same issue, Otto Schael, greenkeeper Wausau Country Club, Schofield, Wis., said: "We had considerable brown patch, but treated it immediately with Nu-Green, which gave favorable results."

SEMESAN

Gives excellent control under most severe conditions. Recommended especially where turf is in good state of fertility.

5 lb. \$13.00
25 lb. 56.25
100 lb. 220.00
300 lb. 645.00

NU-GREEN

Contains same effective ingredient as Semesan. Quickly restores diseased grass to normal, healthy condition where soil fertility is lower.

5 lb. \$ 9.00
25 lb. 37.50
100 lb. 145.00
300 lb. 420.00

Brown patch doesn't wait for the warm, humid weather of midsummer to make its appearance. Small brown patch is prevalent throughout the country and may occur at any time during the growing season. It may appear under conditions favoring large brown patch, and also earlier and later in the season.

Both Semesan and Nu-Green are soluble organic mercury compounds. Neither will burn nor injure the finest turf when properly applied.

For the control of large and small brown patch, one pound of Semesan or Nu-Green to 50 gallons of water will treat 1000 square feet of turf by sprinkling. When applied with a power sprayer, 50 gallons of Semesan solution is sufficient for from 2000 to 3000 square feet of turf; 50 gallons of Nu-Green solution for from 1500 to 2000 square feet.

Buy your supplies of Semesan and Nu-Green now from your seedsman or golf supply house.

BAYER-SEMESAN CO., Inc.
105 Hudson St., New York, N. Y.



SEMESAN

REG. U. S. PAT. OFF.

NU-GREEN

REG. U. S. PAT. OFF.

Let GOLFDOM advertisers help you. They are golf field experts.

the charm that those natural features have for the other ten per cent will, in time, spread until many others have caught the spirit of the great out-of-doors.

In Wisconsin and other central states, in some places in the rough, huge patches of pasque flowers might be naturalized. In early spring their blue haze on a hillside may prove to be a real attraction to the course. In summer, the hazel, the witch-hazel, and the hawthorn will add splashes of unusual shades and tints. For fall color, also, there are the sumach and the American high bush cranberry, which is more free from aphids than the European variety often sold by nurserymen. For spring, summer and autumn beauty there are the nannyberry, the Indian raisin, and the gray dogwood. Lilac borders are beautiful for their springtime bloom, but native shrubs should be used whenever possible. Lilacs are for sentiment, but native shrubs are for American spirit. For a low-growing shrub that thrives in sandy areas, New Jersey tea is a desirable choice. Prairie rose is often found satisfactory as a border planting between the roadway and the fence enclosing the course. It can be cut back to within six or eight inches of the ground in late fall to avoid its being the cause of snow drifting in the roadway.

Clubhouse Plantings

Around the clubhouse the chief aim should be to keep away from the city aspect so often seen in such surroundings. The appearance of the open country, desirable in the course itself, should be carried to the very doors of the clubhouse. In order to do this, the shapes of trees and shrub plantings should be kept natural, and their habits should be studied that they may be placed in the best locations. If the clubhouse has foundation walls, a few well-chosen shrubs should be used around them to tie the building to its setting, always keeping them low in front of windows. If there are no foundation walls above the ground, as in the case of many modern clubhouses, a vine or two is all that is necessary.

An important item in planting both on the course and around a clubhouse is to make the most of every possible vista. In fact, a clubhouse should be designed to make the most of the vistas. Then, plantings should be arranged so that they will frame the wonderful pictures that are sure to be there as one looks from the windows

toward the course, or from the course toward the clubhouse. A view of a lake, a distant church spire, are some of the points of interest that should be capitalized.

If there are water features on the course or near the clubhouse, they should be kept as natural as possible. Sometimes it may seem advisable to build rustic bridges, but they should always have tree or shrub plantings about them to take away the look of bareness.

A parking area should seldom be visible from the clubhouse. This can be avoided by using the right kind of tall shrub plantings and trees for screening purposes.

"Don't's" in Planting

There are many "don'ts" in the landscaping of golf grounds and in the landscaping problems which a greenkeeper has to meet. In the first place, fast-growing trees should seldom be planted unless slower-growing, more permanent ones are to take their places after a time. The main objection to a quick-growing tree, like the soft maple or a willow, on a golf course, is that most trees of this type have whitish undersurfaces on their leaves. When the leaves drop in autumn they are a great obstacle to the finding of a lost ball. The silver poplar is one of the greatest offenders in this regard.

A tree should never bring the element of chance to a golf course. That is, it should never be planted in such a position that it will be likely to penalize a good player. Tree plantings, however, can be placed around one tee out of three without being a detriment to a good player. Therefore, if a poor player is penalized because of such plantings, it can probably be regarded as part of his education.

Deep-rooted trees, like the oak and the elm, the hickory, the basswood, the beech, are safest and best for golf ground use. Foreign trees, no matter how magnificent they may be in their own native haunts, have no place on an American golf course. Even the Norway maple should be omitted, usually, because the length of its life is uncertain, and one cannot tell whether its shape will be picturesque when it is grown. This tree may likewise be a menace by being subject to pests and diseases. And like the sparrow and the starling in relation to American birds, those foreign trees may drive out native plantings.

PREFERRED

on the

World's Finest Golf Courses

If you don't use the

Jacobsen POWER PUTTING GREEN MOWER

It's Because You Never
Tried One.

WOULD you have Putting Greens perfect beyond most expert criticism? Would you cut labor costs 50 to 75 percent in making them so? One man can cut 18 greens a day with the Jacobsen with an ease of operation and an excellence of work duplicated by no other mower.

Keepers of America's most famous golf courses use the Jacobsen Power Mower because of its emphatically superior features, including the auto-type differential which equalizes the traction on two sections of the large rear roller. Result: unequalled ease of turning, a velvety turf without a dent or scar,—a perfect putting green.

Seven-blade high speed reel cuts 19 or 24 inch swath; reel sharpened without removal by mowers own power; special patented brush attachment for close cutting, aerating creeping bent greens, preventing "brown patch," and for perfect spreading of top dressing.

A Few of the Many Jacobsen Users:

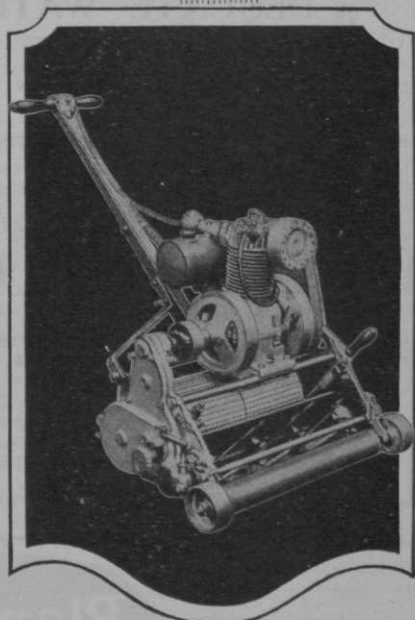
JACKSON MASONIC COUNTRY CLUB, Jackson, Mich.
BROODMOOR GOLF CLUB, Shreveport, La.
BINGHAMTON COUNTRY CLUB, Binghamton, N. Y.
OAKLAND MUNICIPAL GOLF COURSE, Oakland, Calif.
LINCOLNSHIRE COUNTRY CLUB, Crete, Ill.
BILTMORE FOREST COUNTRY CLUB, Biltmore, N. C.
OAKWOOD COUNTRY CLUB, Cleveland Heights, Ohio
KAHKWA COUNTRY CLUB, Erie, Pa.
INTERLACHEN COUNTRY CLUB, Minneapolis, Minn.
LAKESIDE GOLF & COUNTRY CLUB, Oklahoma City, Okla.,
and hundreds of others.

Send for Interesting Information

Descriptive literature, sent free upon request, explains the mechanical details which have in many years' time given world-wide dominance to Jacobsen power mowers. Read it and get the experience of prominent greenkeepers of nationally famous golf courses who use the Jacobsen exclusively, how they maintain 100% perfect greens, also convincing reasons why Jacobsen power mowers are supreme. Write us today and receive this valuable literature.

Jacobsen Mfg. Co.

Dept. 12, Racine, Wisconsin
New York Office: 507 West 56th Street



A TIME-TESTED PRODUCT

*Jacobsen
Power Mower
exhibits are
the sensation
at this year's
National
Flower Shows.*



Plan now to irrigate your fairways this summer!

A DEQUATE WATER, properly applied, will carry your fairways through the dry season . . . and through increased membership activity will bring profitable reactions to all departments of your club.

BUCKNER
EQUIPMENT
*is standard the
world over*

Write your nearest dealer, listed below, or direct to factory, for literature.

BUCKNER MFG. CO., FRESNO, CALIF.

LEADERS IN THE DEVELOPMENT OF SPECIAL SPRINKLERS FOR GOLF COURSES

J. Oliver Johnson, Inc.
Chicago, Ill.

Philadelphia Toro Co.,
Philadelphia, Pa.

New York Toro Co.,
New York City

Wendell P. Miller & Associates

SPECIAL REPRESENTATIVES

H. V. Carter Co., San Francisco, Calif.

Guy R. Champlain, Paris, Ky.

Joseph P. Breck & Sons, Boston, Mass.

Ritchie Bros. & Co., Vancouver, B. C.

EASTERN ENGINEERING REPRESENTATIVE

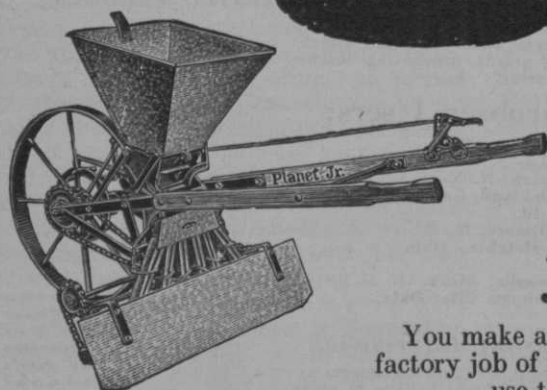
Columbus, O.

Ivan W. Lee,
Seattle, Wash.

Golf Equipment Co.,
Pittsburgh, Pa.

Huey Philip Hardware Co.,
Dallas, Texas.

Chicago, Ill.



Planet Jr.

The
right
spreader for
your greens

You make a quicker, easier and more satisfactory job of fertilizing your greens when you use this Planet Jr. No. 235 Fertilizer Distributor. It spreads fertilizer top dressing, insecticides, in a smooth, even band, 36 inches wide, any desired volume. Instant control. Light to handle. No waste—and a real quick job. Send the coupon NOW for more information.

S. L. ALLEN & CO., Inc., Dept. 154-C
5th & Glenwood Ave., Philadelphia,

Send me full particulars about Planet
Jr. No. 235 Fertilizer Distributor.

Name

Address

City..... State.....

Tell us any idea for making GOLFDOM advertising more helpful.

Problem of Sewage Disposal Demands Club Attention

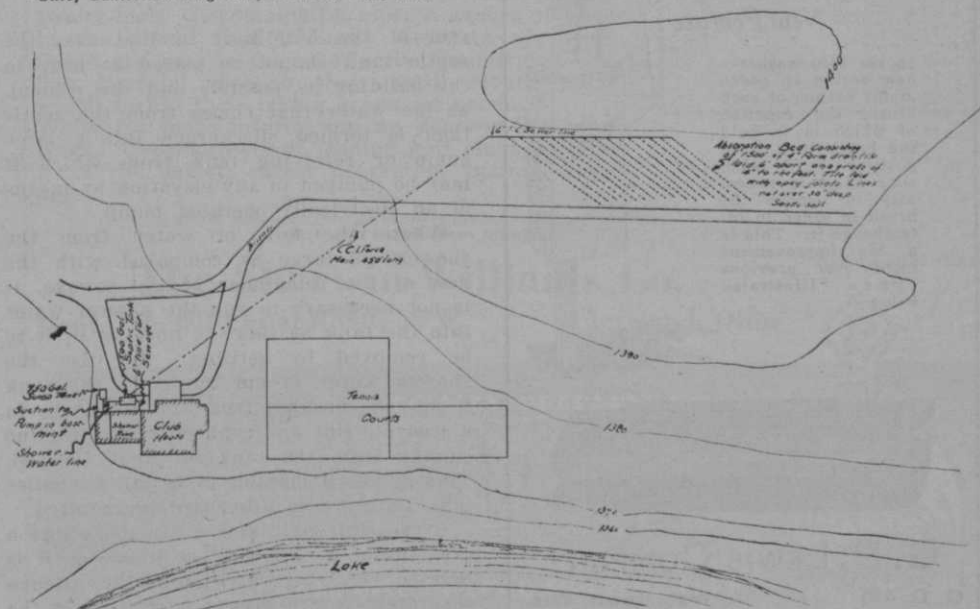
By J. WARREN FORTENBAUGH*

HAVE you ever stopped to consider what conditions would exist around the clubhouse were some modern means of sewage disposal not available? Picture the discharge of wash water, bath water and kitchen wastes upon the surface of the ground or into a stream which flows through the course, making it an open sewer, the landscape marred with unsightly and unsanitary toilet houses, reeking with the foul and dangerous germs of disease. All of this has been banished from the environs of clubhouses by the installation of sewage disposal plants.

There is no reason for any clubhouse, no matter how remotely situated, not being provided with proper and sanitary means of sewage disposal. Any country club, in fact, any rural institution or residence may be equipped with all the sanitary conveniences as if it were situ-

ated in the most modern city. This method of disposing of the sewage consists of the septic tank method of sewage treatment. A septic tank is a water tight container constructed, in installations of this type, preferably of a rust resisting metal such as Armco ingot iron. The tank should have a capacity equivalent to one day's flow of sewage. By this arrangement sufficient storage will be provided to allow for the settling out of the heavier solids and at the same time furnish proper space for the digestion of the solid matter. This digestion is commonly known as decomposition or putrefaction and is due to the action of myriads of microscopic organisms known as bacteria. In this process the complex sewage matter is broken up into the simpler forms of a liquid and a gas. The gas passes off into the air and the liquid flows off with the water from the tank. The residue of the solid matter considerably reduced in form and in

*Chief Sanitation Engineer, Kaustine Co., Inc.



Plan of a successful golf club sewage disposal layout.

The Correct Way to Install a LEWIS GOLF BALL WASHER

To get the utmost efficiency from a Lewis Golf Ball Washer, place the stake deep into the ground so that the top of the handle on the washer is 35 inches above the ground. This permits a free movement in operating the paddle that rotates the ball so effectively against the brushes.

An ordinary golf ball can be given 5,000 strokes in a Lewis Washer without removing any paint—No sand is used—just pure soap and water.

Order your Lewis Washers now—and be sure to provide one at every tee and two at the first and tenth.

You Will Appreciate This New Feature

In the 1930 washer a new spring is added at the bottom of each brush, the function of which is to hold the brush in a fixed position until such time as it is necessary to remove the brush in order to interchange it. This is a big improvement over previous types. Illustrated below—



G. B. LEWIS COMPANY

G. D. 430

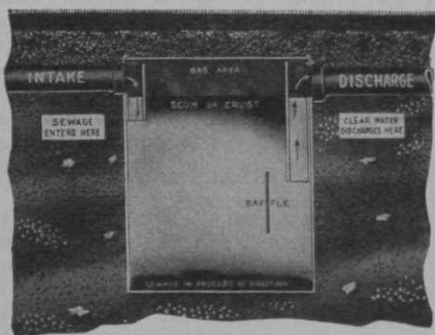
Watertown, Wis.

volume takes up very little of the space in the tank.

The accompanying illustration indicates graphically just how the process of disintegration takes place in the tank.

Installation Factors

All of the sewage arising in the clubhouse such as kitchen, laundry and toilet water may be run into the tank. If the club is so situated that the sewage may be run into the tank by gravity and from there to the place of final disposal, the solution is an easy one. If, however, the clubhouse is situated on the side of a hill facing on or adjacent to a body of water, it is more desirable, from a standpoint of sanitation, to dispose of the wastes to the



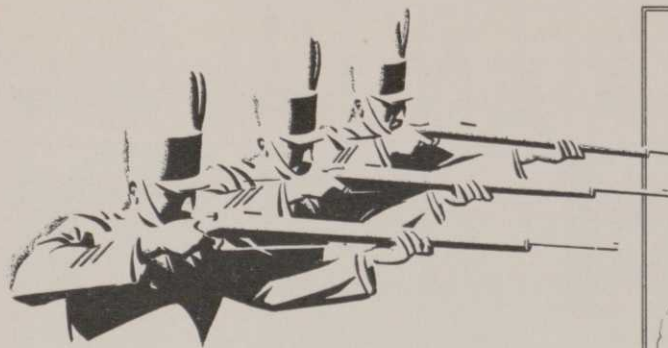
How disintegration is accomplished by septic tank.

rear of the building. In that case the septic tank should be placed as near to the building as possible and the effluent, as the water that comes from the septic tank is termed, discharged into a large sump or receiving tank from which it may be pumped to any elevation by means of an electrically operated pump.

Where the flow of water from the showers is large as compared with the flow of the remainder of the sewage, it is not necessary to run the shower water into the tank as there is nothing in it to be removed by settling. In case the shower water is not run into the tank it may be brought from the clubhouse in a separate line and connected into the line coming from the tank for final disposal. This makes it possible to install a smaller tank than would otherwise be required.

If the club maintains a kitchen where a great number of meals are prepared, it is best to run the water from the kitchen separately into a grease separator for the

(Continued on page 102)



Use triple action NAGA

for a better playing course this year

To make the most of your course, keep the greens and turf free from pests. Naga, the remarkable Sherwin-Williams Insecticide, has been the choice of leading greenkeepers who by long experience know its triple acting protective qualities.

1. Naga insures positive control of grubs and worms.
2. Naga is detrimental to the growth of many trouble-causing weeds.
3. Naga stimulates bents, Bermuda grass, as well as other fine turfs.

Of course, Naga covers more turf per pound because it is fluffy and ground extremely fine; 99.5% passes through a silk screen of 350 mesh to the square inch. It contains 2% more Arsenate of Lead to the pound than ordinary Arsenate of Lead. Grubs are sure to get an effective quantity of this fine material through their small mouth parts which forbid their taking a coarser product. Write for more information on Sherwin-Williams Naga. Greenkeepers of leading golf clubs acclaim it as the safest, surest protection against these pests.

Send for valuable free pamphlet giving full instruction for grub and earthworm proofing.

The Sherwin-Williams Co.

Dept. 716, 601 Canal Road, N. W.

Cleveland, Ohio

"Not a Grub Allowed"



SHERWIN-WILLIAMS

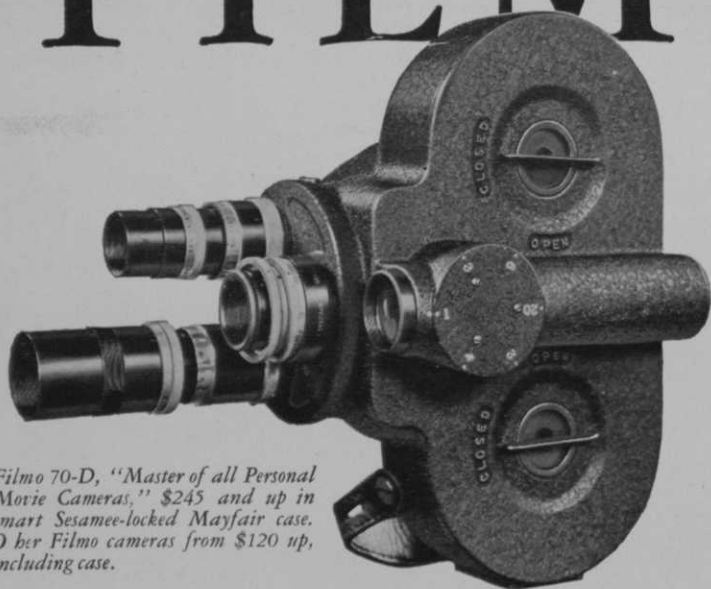
SPECIALLY PREPARED

NAGA

ARSENATE OF LEAD FOR FINE TURF



The Pro with the FILMO



Filmo 70-D, "Master of all Personal Movie Cameras," \$245 and up in smart Sesamee-locked Mayfair case. Other Filmo cameras from \$120 up, including case.

The Better Personal Movie Camera

Take a slow-motion movie of a pupil's swing, *show* him what's wrong, and then show him the *right* way in slow-movies made for the purpose. This is the modern and effective method of instruction offered by many pros who have equipped themselves with Filmo Personal Movie Cameras and Projectors.

Filmo 70-D is built to the golf pro's hand, with its seven film speeds, three-lens turret, and variable viewfinder. You can make s-l-o-w motion analysis of every phase of every stroke, at 24, 32, 48, or 64 frames a second. There is a normal speed of 16, and super-speeds of 8 and 12 frames a second. The three-lens turret enables a quick shift from one lens to another, to catch "close-ups" at long distances. The variable spyglass viewfinder brings the scene to the eye framed as it will appear on the film.

With Filmo, you can keep a permanent slow-motion record of the many varieties of stance and form found among your pupils and club members . . . an invaluable teaching library of good and bad methods. Or, if you prefer, you can add to your income by selling these movies to members. You can make theater-clear movies of tournaments, too, for the club entertainments.

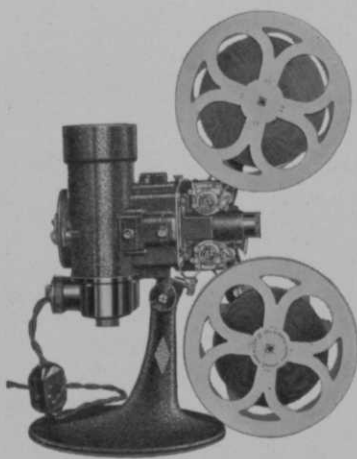
Filmo 70-D is so simple to operate that it's actually easier to take movies with it than it is to take snapshots with a still camera. Just look through the viewfinder, press the button, and "what you see, you get." And with Filmo, you are assured of professional quality movies, for it is made by Bell & Howell, makers of the studio cameras and equipment used by the world's leading film producers for more than 23 years.

all-seeing eye-



How Filmo takes slow-movies of your golf stroke. Joe Novak with the Filmo 70-D.

Theater-clear movies with Filmo Projector!



Filmo 57 Projector—ready to show movies of a club tournament on the night the cup is presented. Filmo 57 Projectors, \$198 up, including case.

Every golf club should own a 16mm. motion picture projector. The brilliance and clarity of movies shown with the Filmo 57 Projector are accomplished by scientific design and precision manufacture. The direct illumination system is powered by a 250-watt, 5 amp. cinema lamp capable of giving professional theater quality to your movies on large or small screen at practically any distance. Filmo's exclusive nine-to-one shuttle movement gives exact and constant registration, with absolutely no trace of flicker. With Filmo the film can be run forward or backward, on A. C. or D. C. current, and can be stopped at will for still projection of a single frame without damage to the film. Filmo's flexibility, portability, and sturdy construction, and its automatic "fool-proof" operation makes it the ideal projector for use in your club.

Filmo Golf Library

Scores of films are available giving professional lessons in golfing from tee to green. In the Filmo Library, for example, are thirteen 100-ft. reel lessons by Harry Cooper and a 4-reel simplified lesson by Joe Novak. These lessons are used by professionals in scores of clubs who find them invaluable aids to oral and demonstrative instruction. Write for literature on Filmo Cameras and Projectors, and the folder "Filmo in Golf Clubs." Or see a nearby dealer.

B E L L &
H O W E L L

Filmo

BELL & HOWELL COMPANY, Dept. P, 1825 LARCHMONT AVENUE, CHICAGO
New York / Hollywood / London (B. & H. Co., Ltd.) / Established 1907

When players discuss your course, what do they say of your fair- ways and greens?

Do they remark on the velvety smoothness of the greens and the fine green vigor of the fairways—or do they catalogue them as just “so-so”? Nothing builds the reputation of a club more quickly than extraordinary fairways and greens; nothing hurts it more surely than mediocre fairways and greens.

Premier Poultry Manure appeals particularly to committees who insist on perfect playing conditions. It is a NATURAL plant food and stimulant. Its fertilizing elements are nicely balanced to give quick results without sacrifice of future fertility. It adds humus and assists bacterial action. It is applied conveniently and is absorbed quickly into the soil. It may be mixed with wonderful results with compost material. It brings out in fullest measure the greenness, firmness and luxuriance of the grass.

For a perfect course during the busy playing season, write NOW for your copy of the folder “Greener Greens—Better Fairways.”

PREMIER POULTRY MANURE CO.
327 South La Salle Street Chicago, Ill.

DEALERS

Joseph Breck & Sons, Corp'n,
85 State Street,
Boston, Mass.

George A. Davis, Inc.,
5440 Northwest Highway,
Chicago, Ill.

Williams P. Philipps & Co.,
519 Monroe Street,
Toledo, Ohio

Grenshaw-McMichael Seed Co.,
E. Broadway at 35th Street,
Tampa, Fla.

Grand Rapids Growers, Inc.,
Grand Rapids, Mich.

E. L. Winn, Inc.,
355 Jersey Avenue,
Elizabeth, New Jersey

for
**better
turf**

Premier

BEST FOR TURF BECAUSE:

--It is a natural grass food and stimulant.
A balanced manure containing 6% Ammonia, 2.50% Phosphoric Acid and 1 to 2% Potash.
It contains no live weed seeds.
Being organic, it aids humus and aids bacterial action.
It can be applied with a minimum of labor and expense.
Being more soluble than other manures, it is more available.
Being finely pulverized, it is quickly absorbed into the soil.

POULTRY MANURE