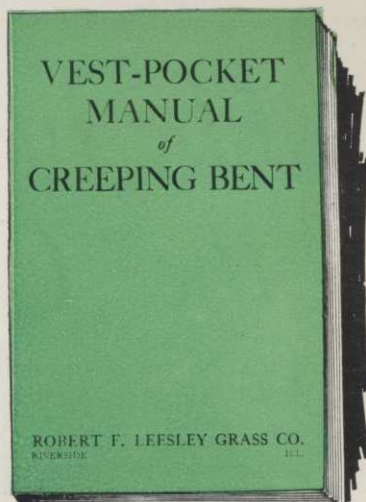


Get your free copy
of
LEESLEY'S
VEST-POCKET
MANUAL
of
Creeping Bent



THIS is the long awaited manual of successful planting and maintenance of bent greens.

It presents the methods perfected by the Robert F. Leesley Grass Co. during nine years of leadership in the bent green world.

Our long and intimate association with many of the foremost greenkeepers enables us to select and assay, in actual working conditions, the methods that are most certain to result in the production of greens that are uniformly healthy, true and beautiful.

Partial Table of Contents:

CHARACTER OF BENT.
PLANTING SEASONS.
SOIL CONDITIONING.
PLANTING.
TOP-DRESSING.
WATERING.
CUTTING.
BRUSHING.

And an Entire Season's Log
for the Greenkeeper's
Records.

This book was written to satisfy the requests for bent green guidance we have received from the many who recognize the Leesley organization as the outstanding practical authority on bent greens.

This book will be sent free on request to interested greenkeepers, green-chairmen, golf architects and lawn-owners.

Write today for your copy of this valuable book.

ROBERT F. LEESLEY GRASS CO.

Growers of the Famous Leesley and Riverside Strains of Creeping Bent

Write now for prices and particulars

22d and Harlem Ave.

TELEPHONES
5348
Riverside 5454

RIVERSIDE, ILL.

The inside story of the "U.S." Royal

IT is easy enough to get distance with any of the leading makes of golf balls—they are all about the same. But when it comes to true putting—that is another story. For right there the "U. S." Royal rolls ahead of the field. And putting is 50% of your score.

The "U. S." Royal putts true because it is as true inside as it is outside.

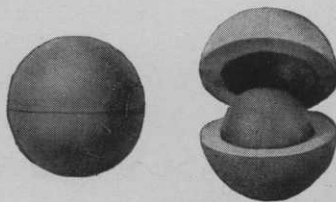
This is the heart of the "U. S." Royal—manufacturers call it the "pill." It is skillfully compounded of tough, virgin rubber, having considerable weight for its size.



It is a perfect sphere giving positive assurance of an absolute center of gravity which is placed and permanently fixed in the exact center of the ball.

Here you see two cups of soft rubber cemented over the heart to

form a jacket that will keep the heart in the center of the ball, and also afford the tape, which comes next, a firm hold.



Bear this in mind:—The "U.S." Royal is round inside and outside. It is round when you buy it, and it stays round when you play it, no matter how hard you sock it.

Send for the booklet, "Do You Know How A Golf Ball Is Made?" by Robert (Bob) H. Davis. It will give you all the inside facts about that most important accessory of the game—the ball—and will show you how your choice of ball may affect your score.

United States Rubber Company
1790 Broadway New York City

Seventy-five cents each



Trade Mark

In recess or mesh marking

"U.S." ROYAL GOLF BALLS

**Produces
Better**



**Greens and
Fairways**

**Easily
Applied**

**Effective and
Economical**

**Free of
Weed Seeds**

Constant use of Milorganite simplifies turf maintenance.

Continuous and uniform growth of established turf on greens and fairways insures dense, luxuriant turf.

Milorganite produces sustained growth by providing a uniform and continuous supply of nitrogen over long periods.

New seedings require plant food to insure quick stand of uniform turf.

Poor turf once obtained is difficult and expensive to improve.

Milorganite applied prior to seeding promotes early growth and develops a uniform turf.

Let our Soil Experts help solve your Fertilizer Problems

For further information address:

THE SEWERAGE COMMISSION

508 Market Street

Milwaukee, Wisconsin

Attaching of Quick Coupler, showing position of operator's hand. All water flows away from operator. The operator DOES NOT GET WET.



55% of Maintenance Costs Saved

Gentlemen of the Greens Committee:

You can cut your watering costs to a mere fraction of present expense by installing these remarkably efficient SNAP VALVES AND QUICK COUPLERS.

One man can do the work formerly required of three.

Sprinkler heads can be attached in six seconds.

Pressure can be regulated so that the flow is uniform over your entire course, no matter how rolling or hilly.

The saving in hose alone is a tremendous item.

Write us for new descriptive folder

THE SNAP-VALVE COMPANY

308 National City Bank Bldg.

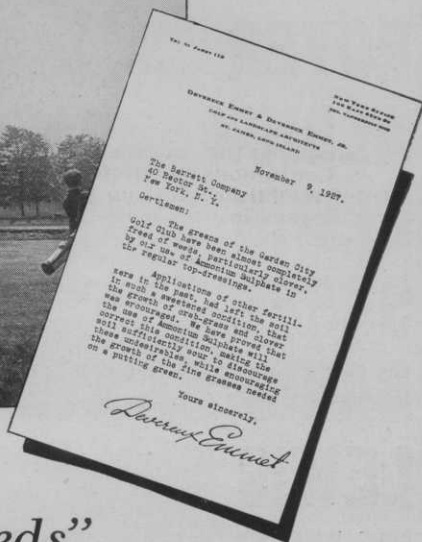
810 S. Spring St.,

LOS ANGELES

Please mention GOLFDOM when writing advertisers



*First Green,
Garden City Golf
Club, Garden
City, Long Island*



“..almost completely freed of weeds”

DEVEREUX EMMET, nationally-known golf and landscape architect, has a message of interest to all greens committees and club professionals:

“The Greens of the Garden City Golf Club have been almost completely freed of weeds, particularly clover, by our use of Ammonium Sulphate (Sulphate of Ammonia) in regular top-dressing.

“Applications of other fertilizers in the past, had left the soil in such a sweetened condition that the growth of crab grass and clover was encouraged. We have proved that the use of Ammonium Sulphate will correct this condi-

tion, making the soil sufficiently sour to discourage these undesirable while encouraging the growth of the fine grasses needed on a putting green.”

—Devereux Emmet

Arcadian Sulphate of Ammonia is the logical nitrogen fertilizer for golf greens and fairways. It is recommended by the Greens Section of the U. S. Golf Ass'n and is used regularly at leading golf courses in all parts of the country. Mail the coupon for our free bulletin, “Arcadian Sulphate of Ammonia on the Golf Course.” Every Greens Committee should have a copy.



The *Barrett* Company
Agricultural Department

40 Rector St.

New York, N. Y.

ARCADIAN

Sulphate of Ammonia

THE BARRETT CO., Agricult. Dept.
40 Rector St., New York, N. Y.

XB

Please send your free bulletin, “Arcadian Sulphate of Ammonia on the Golf Course.”

Name

Club

Town and State

(Kindly Print Name and Address)

± STANDARD ±

GOLF COURSE REQUISITES

ROYER COMPOST MIXER. The only modern and efficient machine for the preparation of compost.

ALBION SULPHATE OF AMMONIA and Fertilizer Distributor. Handles damp or dry materials equally as well.

ELWIN PROPORTIONING APPARATUS. Indispensable for application of liquids to turf.

SAREL SPIKED ROLLER. An imported article, built on different lines and very efficient.

DAVIS PENDULUM SPRINKLERS for Putting Green and Fairway watering. A new principle in sprinkling. Very efficient irrigators.

LEWIS GOLF BALL WASHER. Does away with the old "sand and water" pails. Used on every modern course.

ELWIN ALL-BRASS Putting Cups. Will last a lifetime; an investment for any golf club.

DAVIS FLAG POLES, known and used thru-out the entire country. Both attractive and durable. Harmonize well with our flags.

PREMIER POULTRY MANURE. The most economical fertilizer for golf turf.

PATTISSON Imported GOLF EQUIPMENT. BOGEY hole cutters, turf repairers, chain harrows, etc. Best made and reasonable.

PENNSYLVANIA MOWERS for Green and Fairway cannot be equaled. Built by experts with years of experience.

Superfine Grass Seed, Fertilizers, Mowrah Meal, Semesan, Calogreen, Calo-Clor, Uspulun, NuGreen, Rollers, Sprinklers, Dump Carts, Birch Brooms, Hole Cutters, Etc.

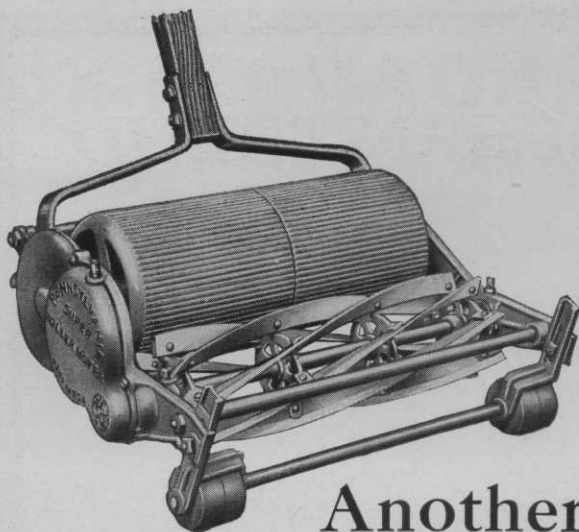
WRITE FOR OUR 1928 CATALOG

—(Western)—

GEO. A. DAVIS, Inc.
5440 Northwest Highway
CHICAGO, ILL.

—(Eastern)—

E. L. WINN, Inc.
355 Jersey Ave.
ELIZABETH, N. J.



Another Tribute to Practical Knowledge

The genuine enthusiasm which has attended every demonstration and trial of the improved 1928 PENNSYLVANIA Super Roller Greens Mower emphasizes again the value of practical knowledge in solving practical problems.

PENNSYLVANIA Experience and PENNSYLVANIA Quality have, of course, been indispensable factors in the development of this precision mower for putting greens. But the fact remains that the new Super Roller, as well as all the other

PENNSYLVANIA Greens and Fairway Mowers, insures better mowing, with less time and labor, largely because it embodies the practical views of many experienced Greenkeepers.

The complete line of PENNSYLVANIA Mowers for Golf Courses is described in an attractive SPECIAL CATALOG which will be sent promptly on request. Furthermore, if you desire, we will be glad to arrange a special demonstration of the new Super Roller at any time on your own greens.

PENNSYLVANIA LAWN MOWER WORKS

1628 North 23rd Street

Philadelphia, Pa.

PENNSYLVANIA
QUALITY
LAWN MOWERS

Please mention GOLFDOM when writing advertisers

THE MODERN TREND

In Golf Course Construction, Like
Building Your Own Home, Is To
Hire a Competent Architect And
Get the Lowest Bid for Construction

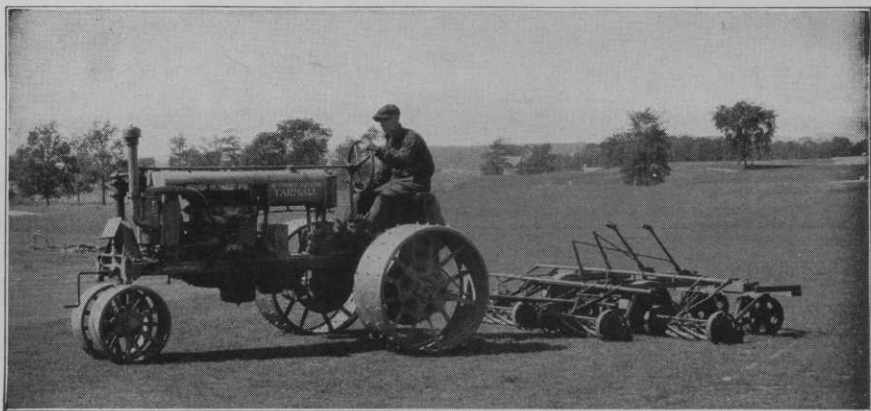
WE WILL
Build Your Golf Course On Your
Architect's Specifications
For a Flat Contract
Price.



18TH GREEN—GLENEAGLES COUNTRY CLUB

CHAS. E. MADDUX
CONSTRUCTION COMPANY

Century Building
CHICAGO



*FARMALL in service on the links of the
Sinnissippi Golf Club, Rockford, Ill.*

When We Say "All-Purpose" We Mean ALL-PURPOSE!

It is a plain fact that you can load every golf course power job onto the FARMALL and count on its doing the work easily, quickly, and economically. Power is readily available through drawbar, belt pulley, and power take-off. In addition, special machines, such as the 7-foot, power-drive FARMALL mower, can be mounted on the FARMALL for fast, efficient work. Note that it is not necessary to maintain a separate mower for mowing rough, weeds, etc.

The FARMALL, with its wide-spaced rear wheels and close-spaced front wheels, makes almost three-point contact with the ground. This enables the FARMALL to negotiate irregular ground without twisting or straining the mechanism. The wide tread and

perfect distribution of weight assure operation on the hilliest links with maximum safety. The special ability of the FARMALL to "turn on its heel" is of great value in golf course work. The most out-of-the-way corners can be reached successfully; when the extreme right or left turn is necessary a simple device automatically locks the inside rear wheel, enabling the FARMALL to turn on a radius of 8 feet.

Whether you are interested in all-purpose power for golf course construction or maintenance, or for a wide variety of work around the country estate, ask us for complete information on the FARMALL. We shall be pleased to forward, also, information on any of the International Harvester Equipment listed below.

INTERNATIONAL HARVESTER COMPANY

606 So. Michigan Avenue of America Chicago, Illinois
(Incorporated)

142 Company-owned branches in the United States

International Harvester Equipment for Golf Courses, Estates, Country Clubs, Parks and Cemeteries

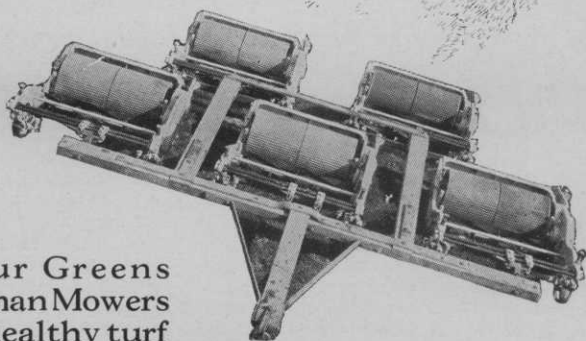
Lime Sowers
Engines
Seeders
Wagons

Soil Pulverizers
Plows (Moldboard)
Manure Spreaders

Trucks
Tractors
Coaches

Tractor Mowers
Disk Harrows
Plows (Disk)
1-Horse Mowers

Plan to Buy a Roseman Mower



First, tell your Greens Chairman Roseman Mowers build a dense, healthy turf by light rolling as they mow—eliminating cuppy lies.

Then, tell him they are delivered with an iron clad guarantee against breakage. Bed knives last two years and self-sharpening reels four years.

Greenskeepers save time; also eliminate holding up work on account of broken parts.

Of course, they are offered on 30 days' trial—with arrangements for future time payments.

The Roseman Tractor Mower Company

6-8 E. 46th St., N. Y. C.

or

810 Church St., Evanston, Ill.

The only builders of gang mowers who have practical experience in green maintenance.

ROSEMAN MOWERS

Reg. U. S. Pat. Off.

Golfdom

THE BUSINESS JOURNAL OF GOLF

MARCH, 1928

Do Your Draining Right at Start—It Saves

By G. R. PAYNE

President, Texarkana Country Club

DRAINAGE of our property is nothing more nor less than an adaptation to a golf course of the plan of agricultural drainage.

The drainage of farm lands and of golf courses by means of underground tile or pipe might be separated into classes:

1. Drainage of flat or low land.
2. Interception and underground carriage to a suitable outlet of ground or seep water.
3. Collection and underground carriage to a suitable outlet of surface water, by means of storm water sewer pipe with surface inlets.

We have had some little need to employ under-drainage falling under the first class, and have been rewarded with the speedy removal of surface water and of excess soil water, thus making the course dry under foot not only for the players but for the groundkeeper, his mowers and tractors, and effecting a loosening, aeration and sweetening of otherwise sour soil, discouraging the coarse and encouraging the fine texture grasses. This is particularly important in the South, where the coarse carpet grass is encountered.

The second class of sub-soil drainage is perhaps not so common as the first but on our golf course has been more needed.

The topography of our course is rolling and, therefore, ideal for an interesting course, but presenting a problem of seep water which threatened to be more than interesting.

Soil Structure

The natural top soil, where not lost by

erosion, as was found to be the case in that part of the property embraced in old cultivated fields, was a loose, sandy loam, underlaid by pervious clay, beneath which was a stratum of water-bearing gravel, in turn underlaid by impervious hard-pan. The rain water readily percolates to the gravel stratum, but at the hardpan its downward course is stopped, and a horizontal flow is started, the water coming to the surface where the hardpan outcrops near the bottom of the slopes, producing "wet-weather springs" and a seepy, boggy soil condition. The resulting ferns and "bosky dell" effect in the woodland rough present a pleasing appeal to the nature-lover, but on the fairway the appeal is far from pleasing to the golfer or groundkeeper.

Curing Seepage

Photo herewith shows drainage work on No. 2 fairway at the time of construction to cure the worst case of seep water on the course. From the photo you will see that in the stump holes on the lower side of this fairway, the ground water stood near the surface. This fairway you will note runs alongside the slope or hill. On the upper side of the fairway where the hard-pan was from two to three feet below the surface, a ditch was dug down through the water-bearing gravel, and slightly into the hard-pan. The ditch was parallel with the fairway, the "swing" in the fairway bringing the center of the ditch lower down the slope than the two ends, thus giving a fall in the bottom of the ditch from the ends to the center.

In this ditch No. 2 grade of regular hard-burned clay sewer pipe was laid, the bells or sockets being left open to admit the water but serving to hold the pipe in alignment. At the center of this line, or the lowest point, another line of underground pipe was connected, and continued at right angles with the first line, directly



The swampy character of the second fairway is indicated by the free-running water in the ditch previous to tiling

down the slope, serving as an outlet into the adjoining lake for the underground water collected by the upper line.

All parts of the second fairway have at all times since this installation been dry and firm and no one except the few of us who were familiar with the condition of the ground before and during construction of the course, would suspect that the pipe is underneath our brassie lie, discharging ground water safely out of our way, for days and in fact weeks after a rain.

Still at Work

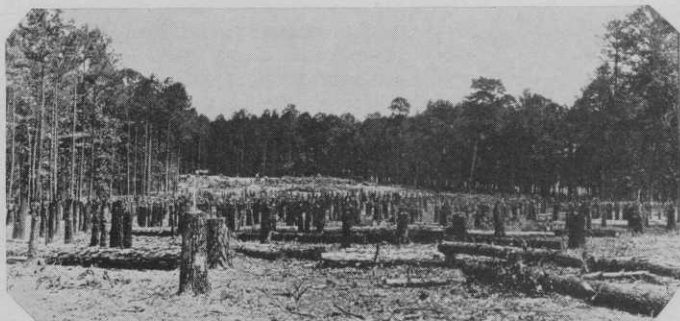
After the course was put in play it was

found that there were other seepy points in the fairways, always along the lower side of the slopes, where the ground water coming to the surface rendered play unsatisfactory and machine-mowing impossible for weeks at a time. At some points the out-crop of the hard-pan was on the face of a bunker, producing a chronic "sloppy" condition. Some of these seeps have been cured, and others are now being treated, all by the same method used on No. 2 fairway,—an underground collecting line above the point of outcrop or seep, laid at a right angle to the slope with a discharge or outlet line leading directly down the slope to a natural drain in the rough, safely out of the field of play. Like a roof gutter and downspout, excepting underground.

Top Soil Losses

That part of our course that fell within some old cultivated fields was almost devoid of top soil, due to loss from erosion by surface water. Consequently, the development of a good turf on that part of the course has been very slow. Fertilizer was applied at the time of construction and annually thereafter, but to a great extent it goes the same route as the original top soil; that is, it is carried by the surface rain water from the slopes where it is needed, to the low parts of the course where it is not needed. In fact, much of it passes into our streams and is carried off our property, fertilizing the lower Mississippi Valley, I presume, or perhaps lost in the Gulf of Mexico.

On the woodland part of the course, where timber of several generations' growth was cleared for the fairways, an appreciable part of the loam was carried away by rain, in the interim between cultivation for vegetative planting and final development of matted turf. We have also had loss of soil from bunker slopes and stood the expense of replacement, due to



The matter of clearing the land was a considerable task in itself. Here on the left is a view of one of the fairways, hewn through solid woodlands, after the trees had been chopped down and before the stumps were pulled