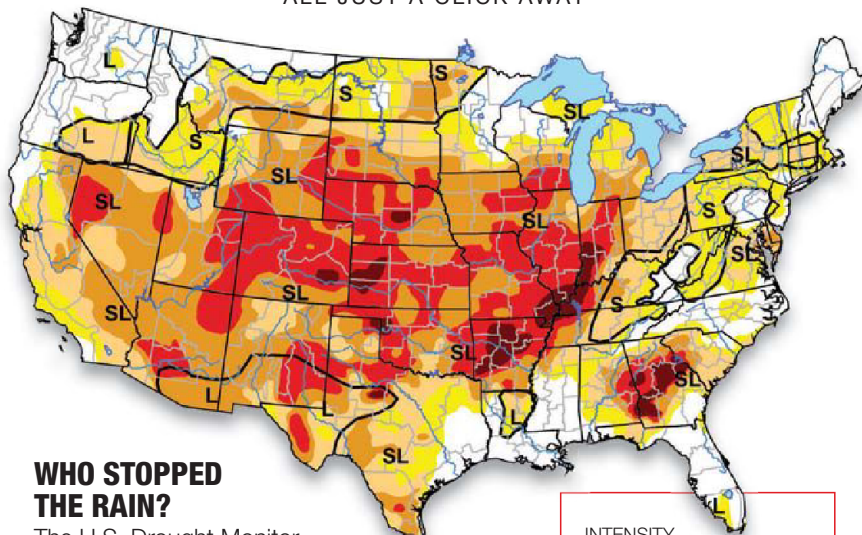


# Around the Web

ALL JUST A CLICK AWAY



## WHO STOPPED THE RAIN?

The U.S. Drought Monitor reports that 61 percent of the lower 48 has been suffering through a drought. Anyone know a good rain dance?

Don't worry, this month's cover story – it starts on page 16 – is all about recovering from another rough summer. The healing starts now!

### INTENSITY

- D0 Abnormally Dry
- D1 Drought - Moderate
- D2 Drought - Severe
- D3 Drought - Extreme
- D4 Drought - Exceptional

Source: U.S. Drought Monitor (<http://droughtmonitor.unl.edu/>), July 24th, 2012

## MUST SEE videos



### AGGRESSIVE THATCH CONTROL

Superintendent Chris Deariso's aggressive new method for combatting thatch on TifEagle greens, step-by-step.

<http://tinyurl.com/cdaa9de>



### LOOK MA, NO HANDS!

This sprayer from Turf Geeks doesn't need an operator – as demonstrated by this daring stunt! Don't try this at home!

<http://tinyurl.com/crwcdvz>

## TOP TWEETS

**Jason Chennault**  
(@JasonChennault): The #paspalum at #PGA looks great, presenting a perfect challenge. Great job Jeff Stone and team.

**Dustin Riley, CGCS**  
(@ogcsuper): By Monday, I should know which dormant turf in the roughs is actually dead turf.  
#gettheseedorderready.

**Dustin Harvey**  
(@nibiruhav): @SuperProblems is it bad when you like the smell of propiconazole in the morning?

BROUGHT TO YOU BY

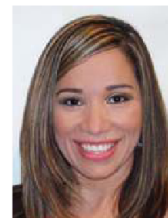


## APPLIED KNOWLEDGE™

### USE PROPER APPLICATION EQUIPMENT

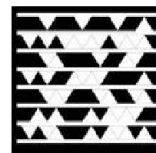
By Julie Pospech | FMC

Even when the appropriate pesticide is applied using the right equipment, applicators will not achieve optimal results if their tools are not prepared properly. To ensure even, effective treatment, only use sprayers and spreaders that have been calibrated to the approved equipment settings for the pesticide being applied. Be sure to take into account field speed, application rate, spray pressure and the size of the treatment area. Accurate calibration helps ensure that a pesticide is applied at a rate that delivers effective control without endangering humans, plants and animals living nearby. After application, it is just as important to wash equipment and perform any necessary maintenance.



Julie Pospech is the Market Specialist for FMC Professional Solutions in Colorado, Kansas, New Mexico, Oklahoma and Texas.

FOLLOW  
@FMCturf  
ON TWITTER



Scan this tag with the Microsoft Tag Reader app on your smartphone to register for label update notifications from FMC Professional Solutions. Need the mobile app? Get it free at <http://gettag.mobi>

Always read and follow label directions. FMC and Applied Knowledge are trademarks of FMC Corporation. ©2012 FMC Corporation. All rights reserved.